



Business and Community Forum

11th January 2023

**CCWEL: Section 3 York Place
to North St David Street**



Balfour Beatty

◆ **EDINBURGH** ◆
THE CITY OF EDINBURGH COUNCIL

sustrans
JOIN THE MOVEMENT

**TRANSPORT
SCOTLAND**
The Scottish Government

Agenda

- Introduction – Rurighd McMeddes (The City of Edinburgh Council)
- Construction and traffic management – Scott Ritchie (Balfour Beatty)
- Social impact & sustainability initiatives – Megan Simms (Balfour Beatty)
- Communications and engagement – Eileen Hewitt (The City of Edinburgh Council)
- Questions and AOB

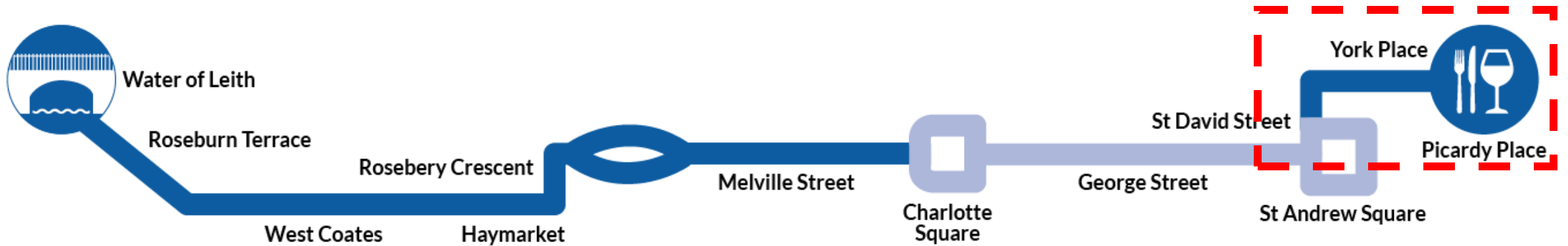
Introduction

Rurighd McMeddes

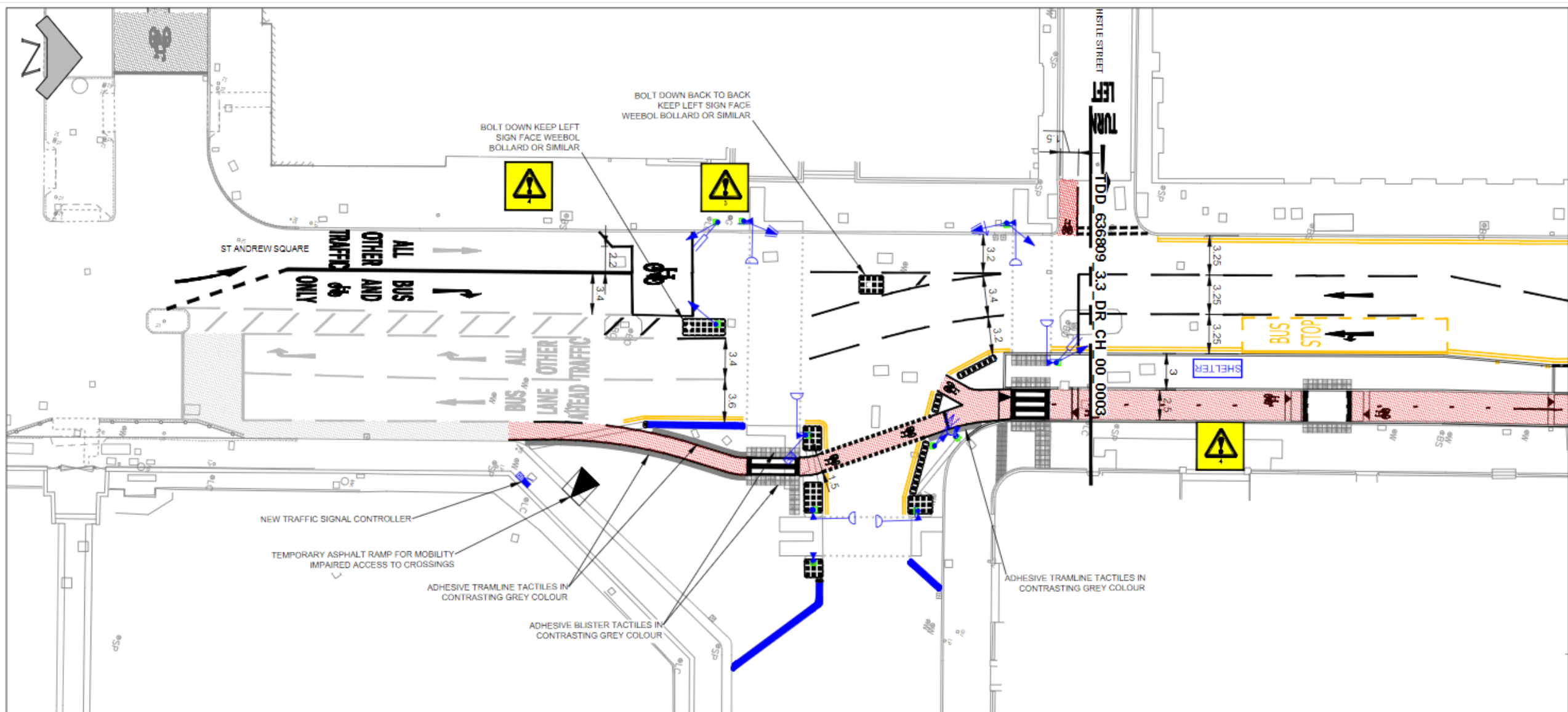
Senior Project Manager, Active Travel

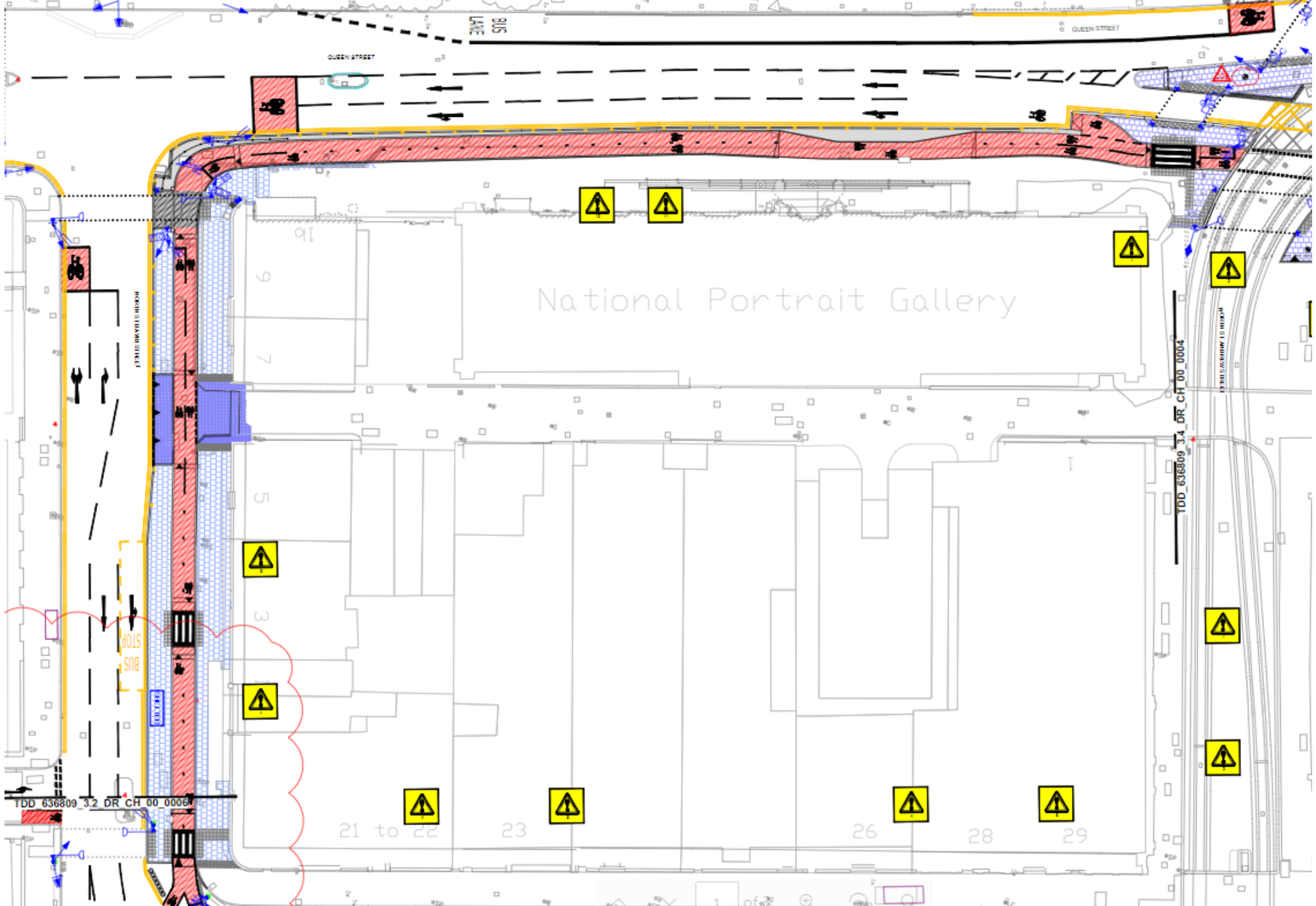
The City of Edinburgh Council

Section 3



CCWEL Section 3 Plans





BUS LANE

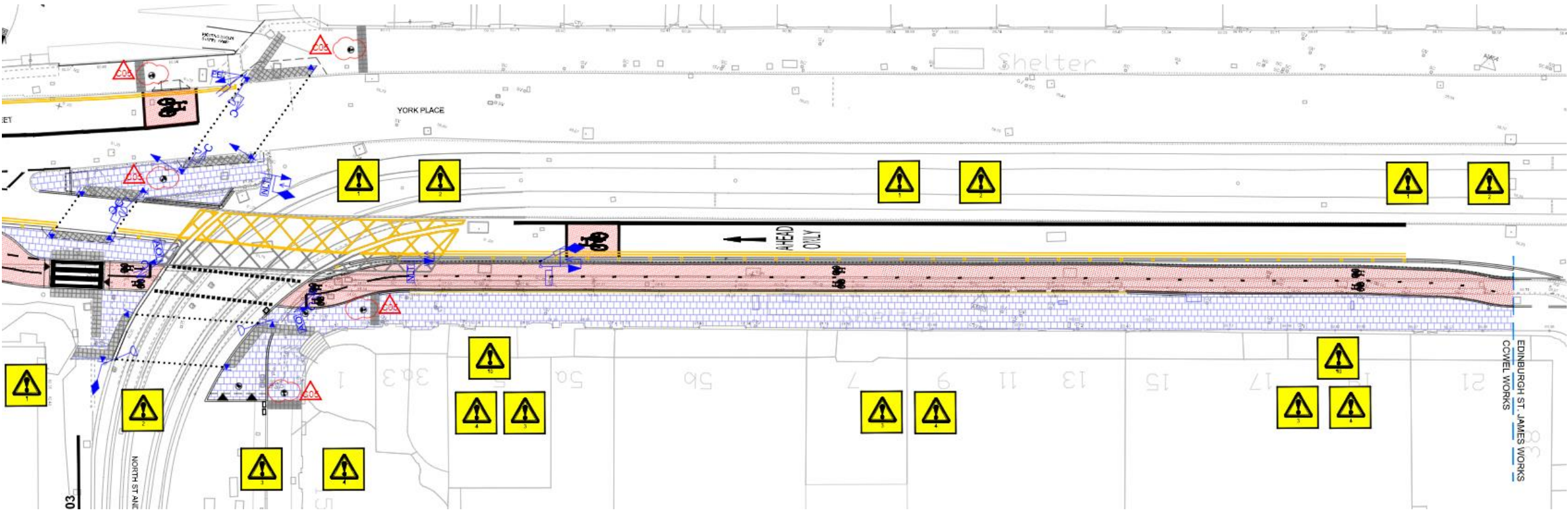
QUEEN STREET

QUEEN STREET

National Portrait Gallery

TDD 636809 3.2 DR CH 00 0006

TDD 636809 3.4 DR CH 00 0004



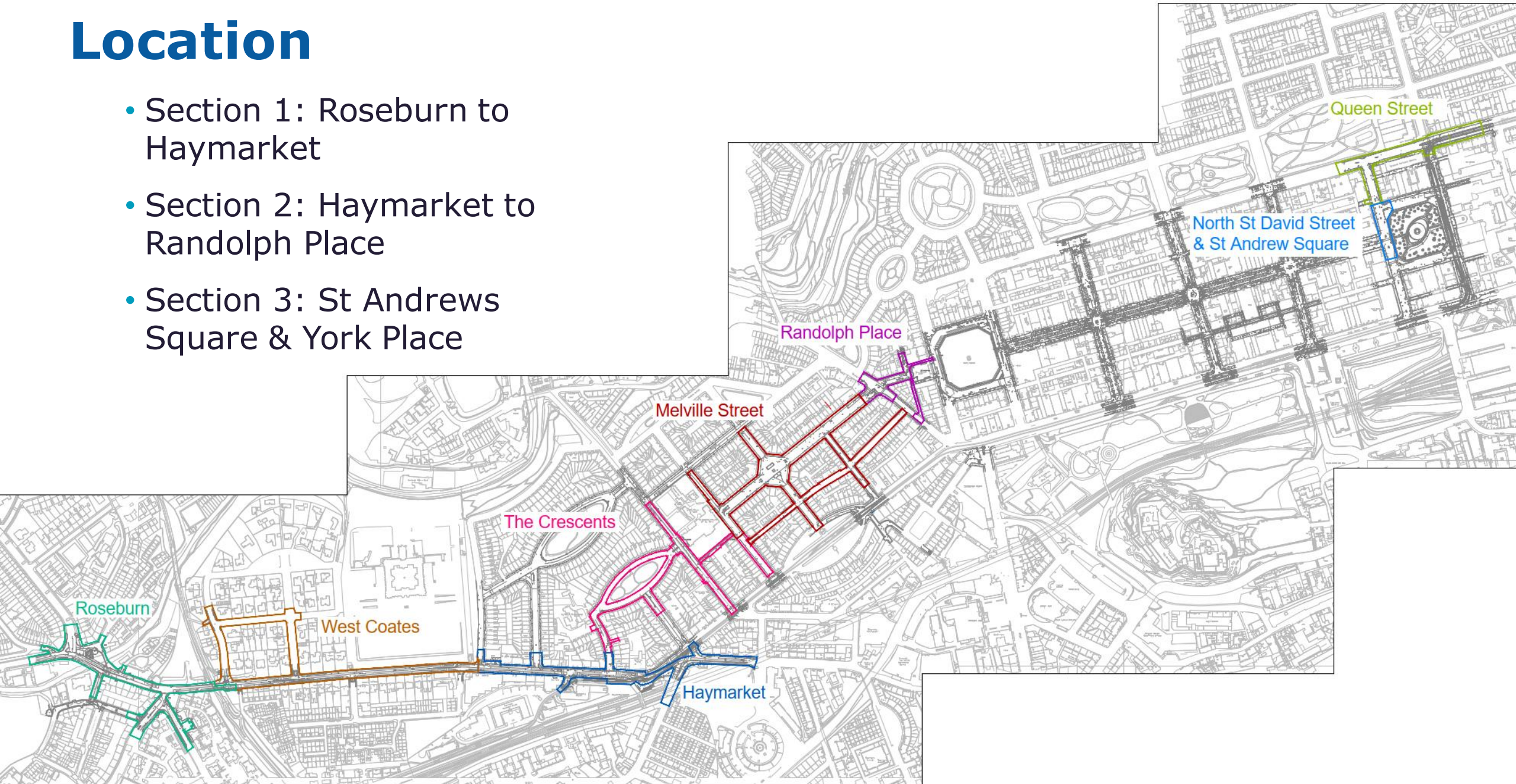
EDINBURGH ST. JAMES WORKS
CWEL WORKS

Construction and Traffic Management

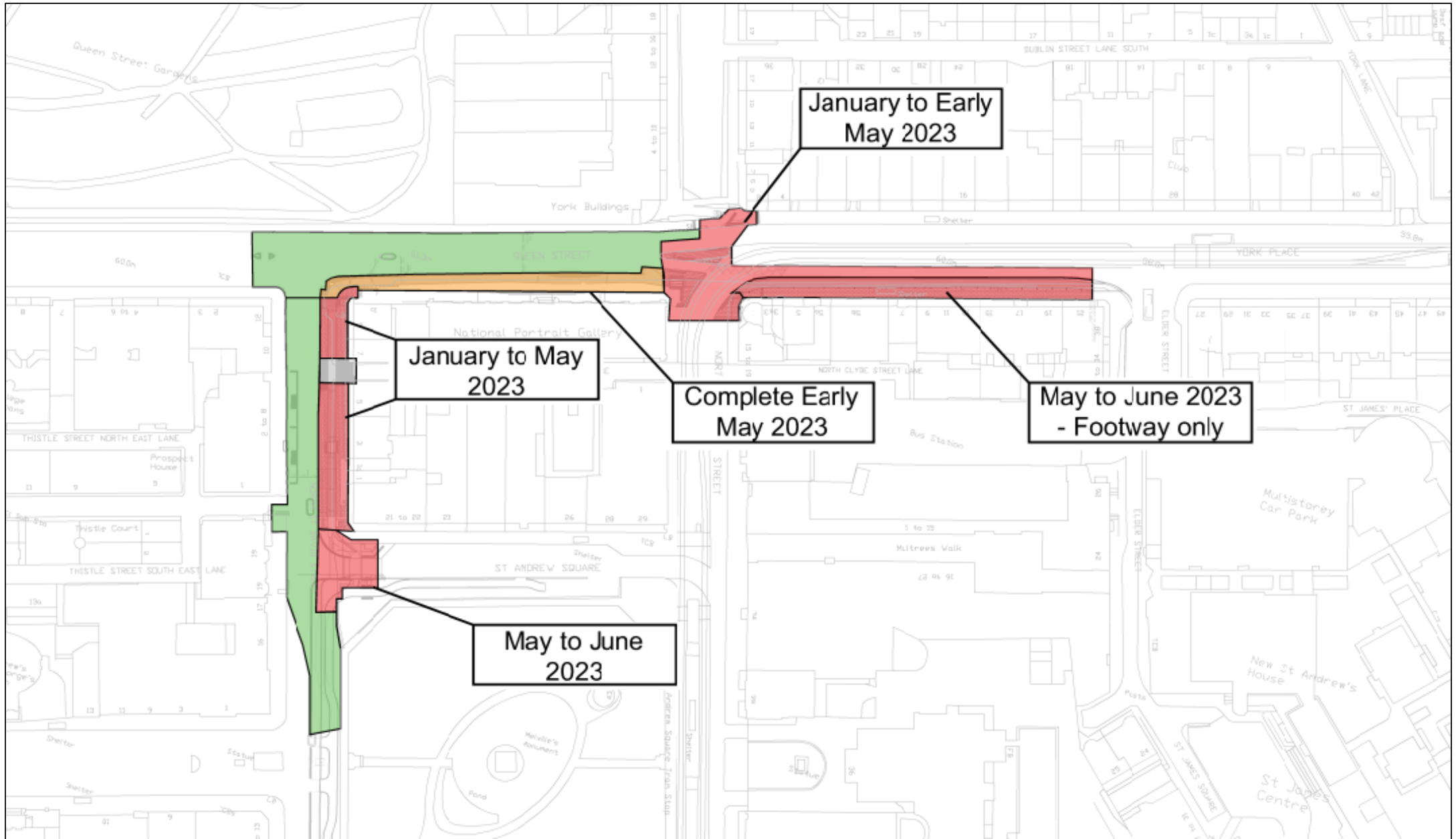
Scott Ritchie
Project Manager
Balfour Beatty

Location

- Section 1: Roseburn to Haymarket
- Section 2: Haymarket to Randolph Place
- Section 3: St Andrews Square & York Place



York Place to North St David Street – Timescales



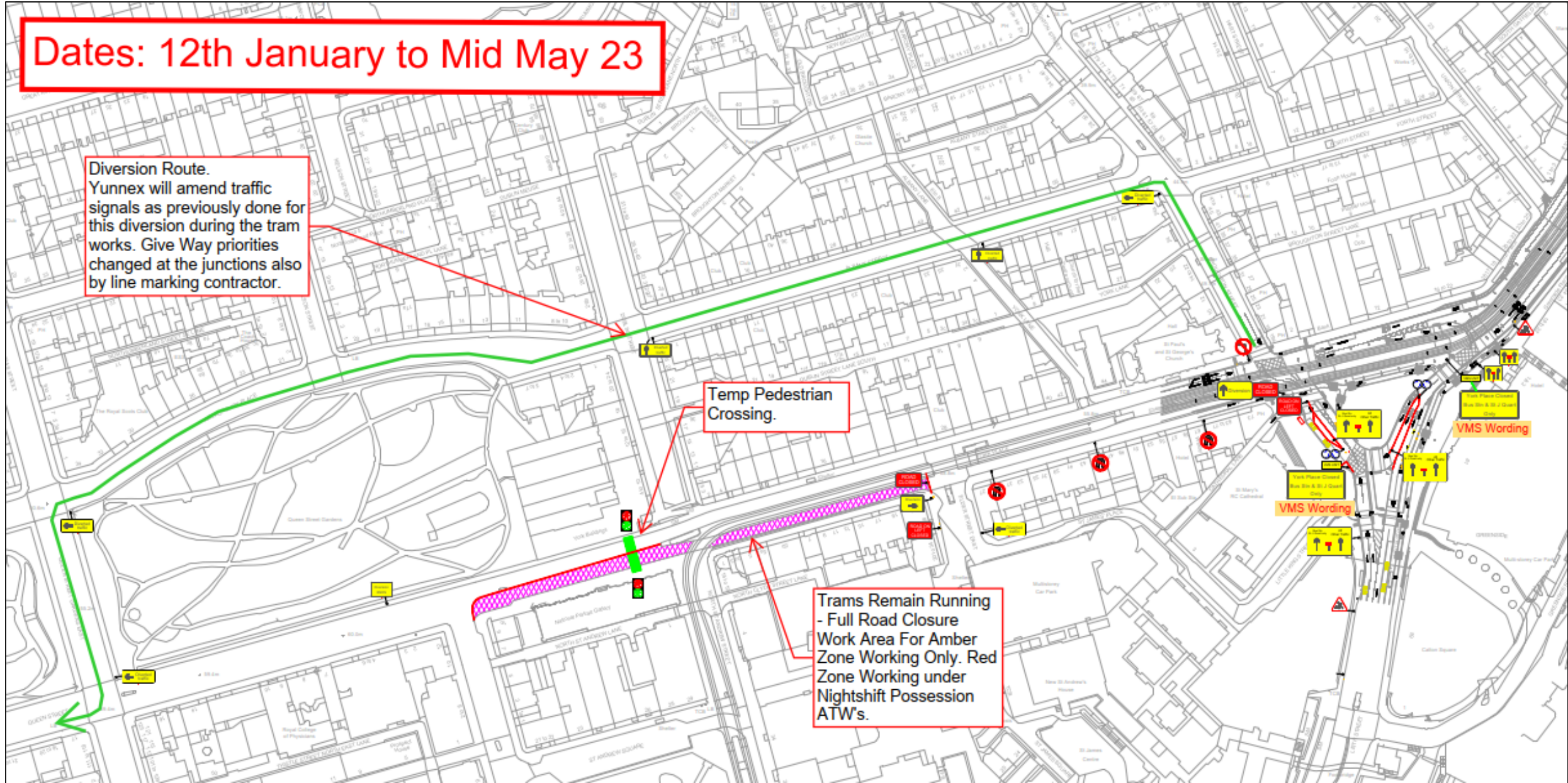
York Place – Closure – Traffic Management

Dates: 12th January to Mid May 23

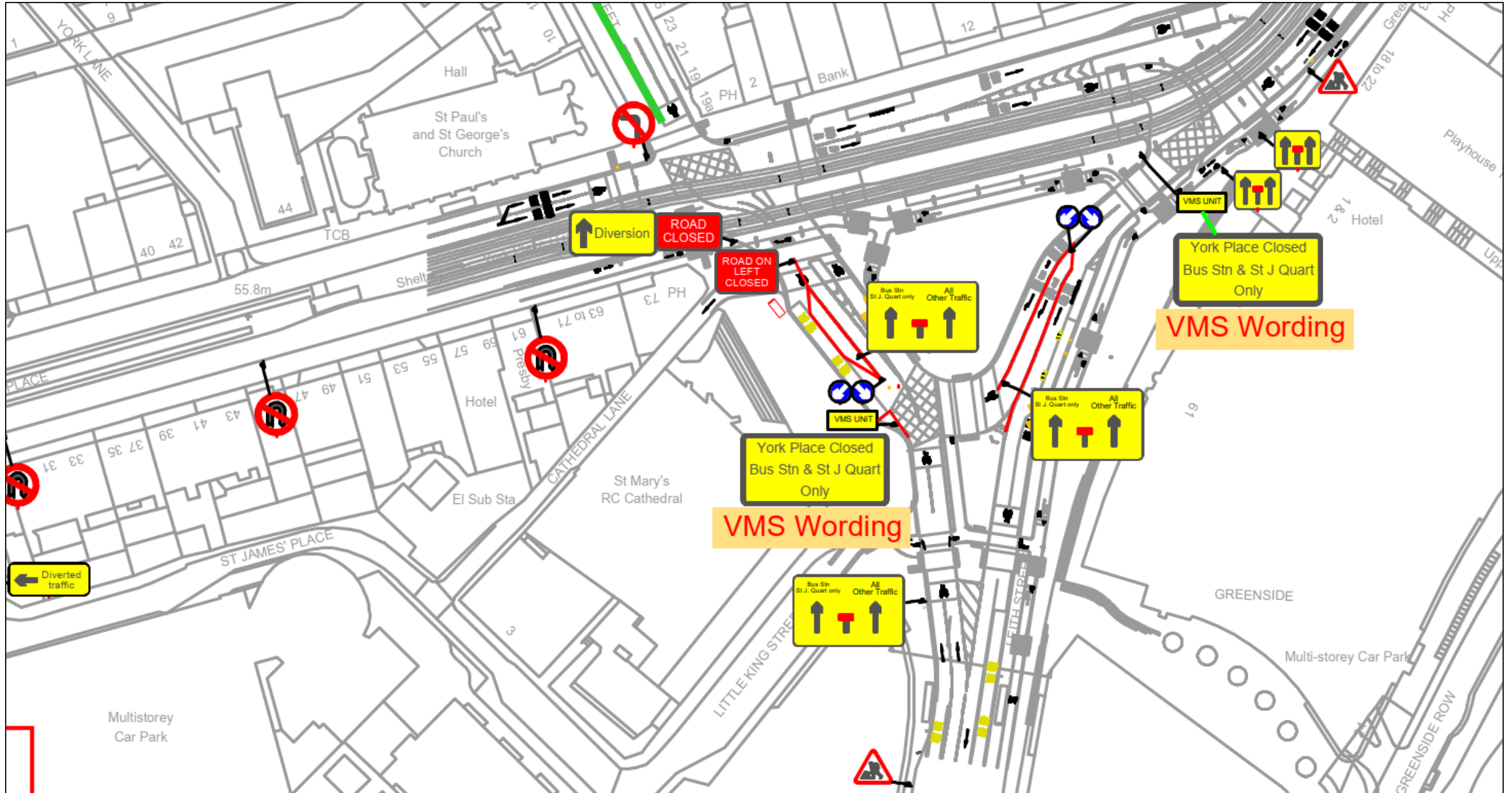
Diversion Route.
Yunnex will amend traffic signals as previously done for this diversion during the tram works. Give Way priorities changed at the junctions also by line marking contractor.

Temp Pedestrian Crossing.

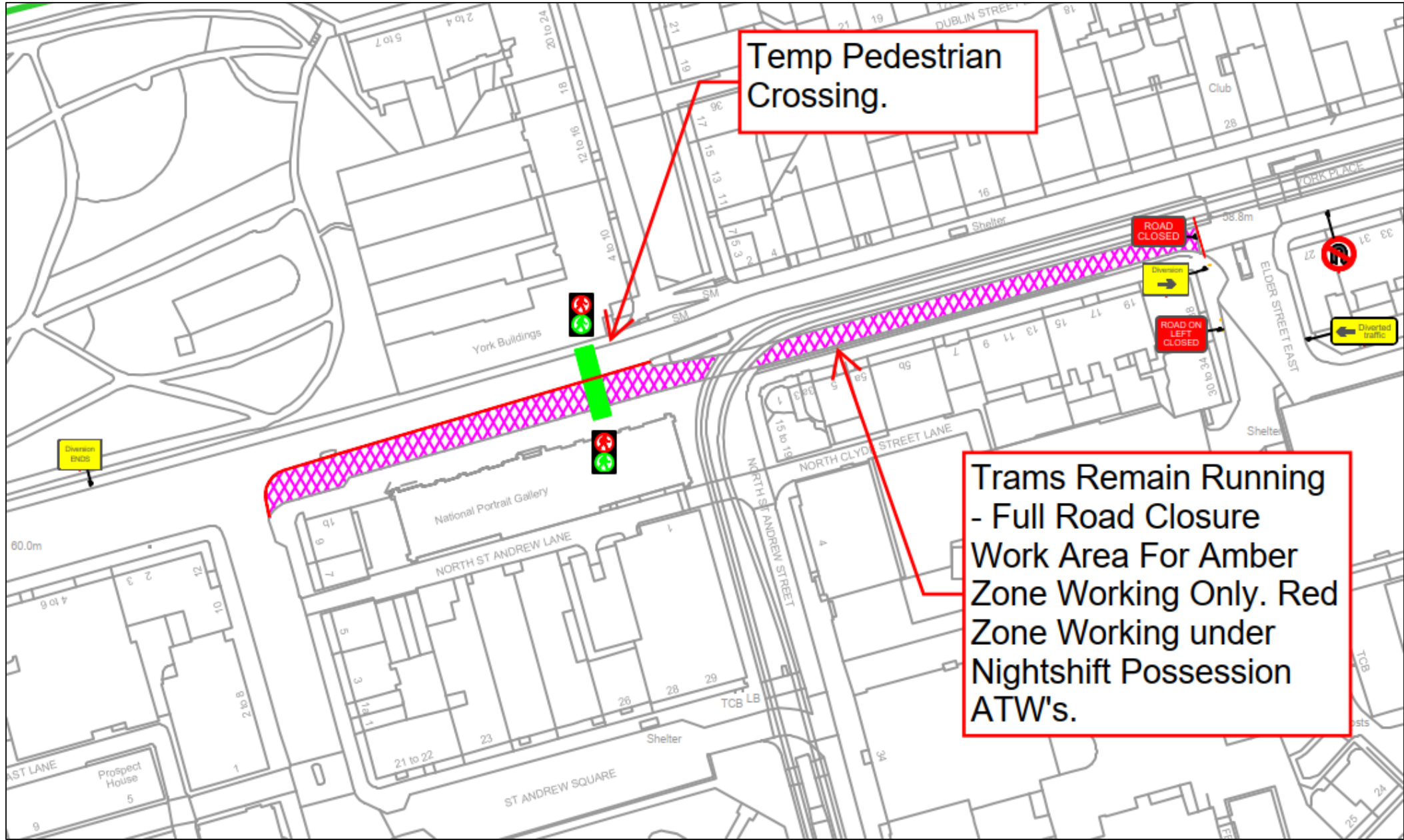
Trams Remain Running - Full Road Closure
Work Area For Amber Zone Working Only. Red Zone Working under Nightshift Possession ATW's.



York Place – Closure – Traffic Management



York Place – Closure – Traffic Management



Temp Pedestrian Crossing.

Trams Remain Running - Full Road Closure Work Area For Amber Zone Working Only. Red Zone Working under Nightshift Possession ATW's.

York Place to North St David Street - key changes during works

Essential road layout and 'business as usual' changes

We will modify or reposition key items as follows:

- Parking suspension on Queen Street and York Place.
- Road modifications/closures to facilitate new construction works as follows:
 - Temporary lane closures on Queen Street, and North St David Street.
 - Introduction of temporary drop/off and pick up zones for businesses.
- We will carry out day-to-day & week-to-week communication and liaison with stakeholders, to ensure the overall disruption is minimized.
- Bus stops will be relocated where necessary to ensure they can stop and collect passengers in a safe locations.

Social impact & sustainability initiatives

Megan Simms
Social Impact Advisor
Balfour Beatty

Balfour Beatty Sustainability Strategy



2030 target

£3 billion social value generated

Measurement

Social Value National TOMS Framework¹

Primary UN Sustainability Development Goals

8 DECENT WORK AND ECONOMIC GROWTH

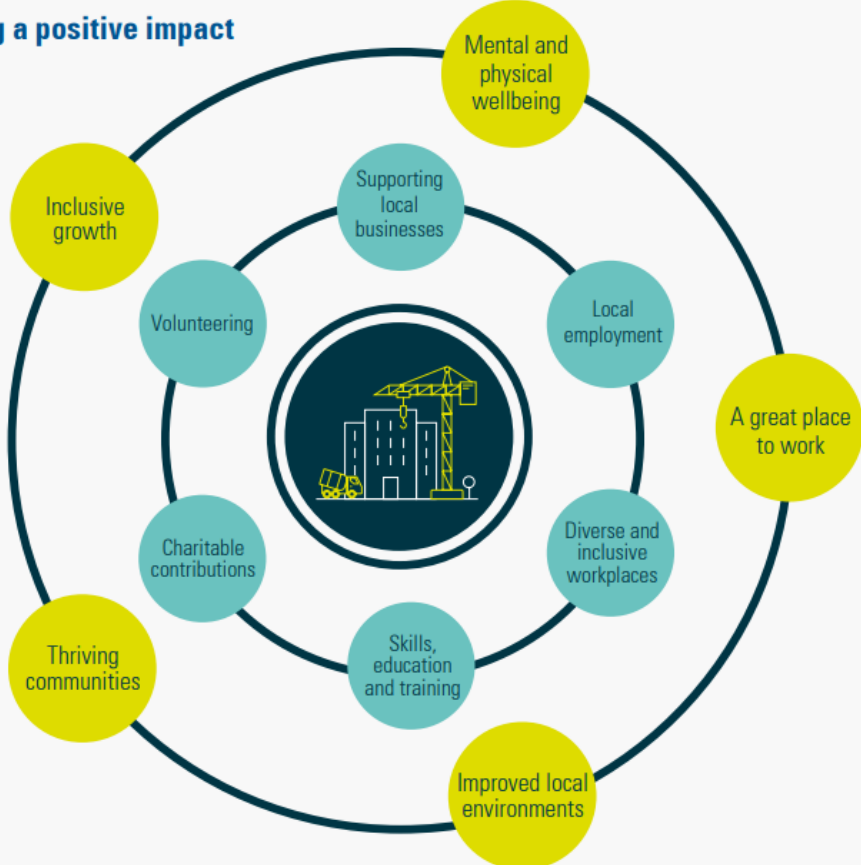


11 SUSTAINABLE CITIES AND COMMUNITIES



	Environment	Materials	Communities
	Responding to climate change and managing our impact on the environment	Choosing the right materials, using less materials and creating value from the materials we no longer need	Improving the prosperity and wellbeing of individuals and communities
2040 Ambitions	Beyond Net Zero Carbon	Generate Zero Waste	Positively Impact More than 1 Million People
	▼	▼	▼
2030 Targets	Achieve our science-based carbon reduction target	40% reduction in waste generated	£3bn social value generated
	▼	▼	▼
Local Sustainability Action Plans			

Making a positive impact



Considerate Constructors Scheme

42/45

CCWEL First audit



37 Industry
Average Score

2022 CODE OF CONSIDERATE PRACTICE

Respect the Community

Constructors must manage their impact on their neighbours and the public to support a positive experience, by:

- 1.1 Ensuring courteous and respectful language and behaviour in and around the construction activity.
- 1.2 Providing a safe environment, preventing unnecessary disturbance, and reducing nuisance for the community from their activities.
- 1.3 Proactively maintaining effective engagement with the community to deliver meaningful positive impacts.

Care for the Environment

Constructors must minimise their impact and enhance the natural environment, by:

- 2.1 Prioritising environmental issues to protect the natural environment and minimise negative impacts.
- 2.2 Optimising the use of resources, including minimising carbon throughout the value chain.
- 2.3 Engaging with the community to improve the local environment in a meaningful way.

Value their Workforce

Constructors must create a supportive, inclusive, and healthy workplace, by:

- 3.1 Actively encouraging and supporting an inclusive and diverse workplace.
- 3.2 Proactively supporting safe working, mental and physical wellbeing at work.
- 3.3 Providing workplaces that are well maintained, clean and secure from physical and biological hazards.

Community benefits

- An overview of Balfour Beatty's plan to make a positive Social Impact in the community, during the CCWEL project.



Clean Air Day 2022



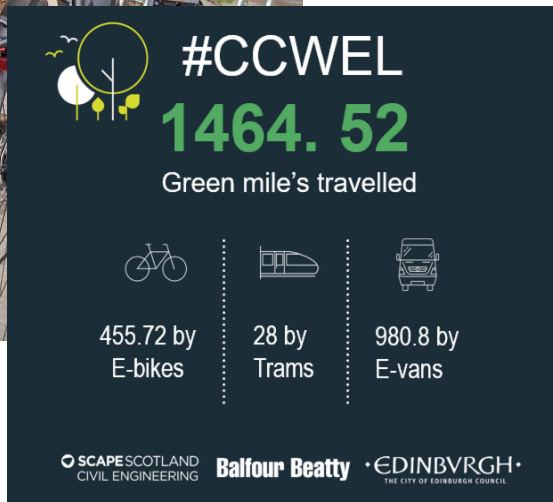
- Dr Bike session
- Police Scotland Bike Marking
- Cycle Safety sessions for local school kids
- Sustainable construction showcase
- Bling your bike stall
- Cargo bike movement

Supporting Edinburgh Food Project

- First collection ready for delivery
- Further collections planned over project lifespan



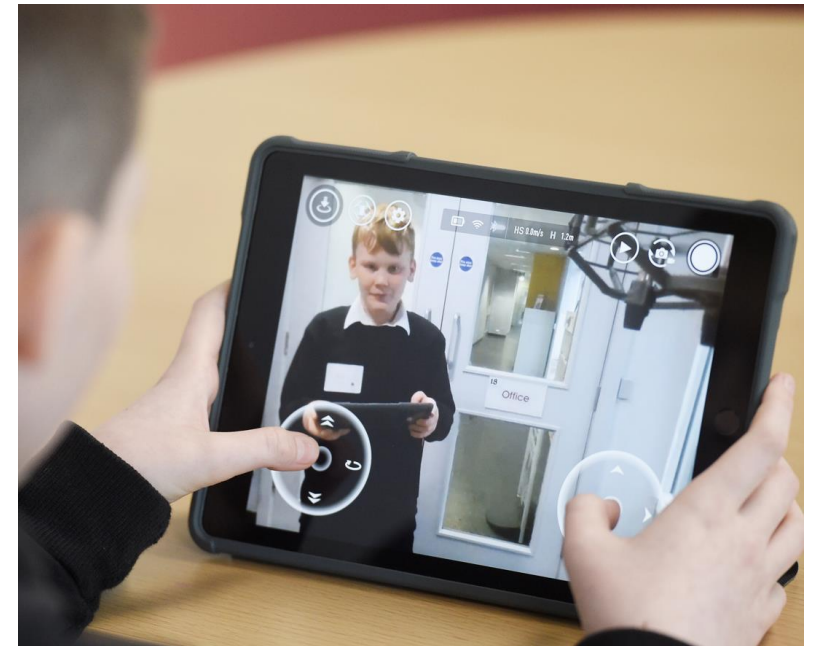
E-Bikes for site transport



- E-bikes on site for staff to access the work sites
- Reducing strain on local road network and reducing project carbon footprint
- Tracking and reporting of miles saved
- Promoting other sustainable travel options (train, tram)

Education engagement programme

- Primary school poster competition
- Careers and STEM activities for local secondary pupils



Upcoming: 'Pollinator Highway' planter workshops



- Upcycling sessions to turn waste pallets into planters for use in the community
- Supported by the Balfour Beatty team and delivered with local community groups

What matters to you?

- We want to know what matters to you in your community and where we might be able to support ideas, organisations or projects are happening in the community.
- ccwel@edinburgh.gov.uk FAO Duncan Gardner

Communications & engagement

Eileen Hewitt

Transport Officer, Active Travel

The City of Edinburgh Council

Local community engagement



Important to ensure good channels of communication between the Council, the Contractor and the community

- Working with Balfour Beatty to let you know about key dates and construction plans
- Letter drops, project updates, website, engagement sessions, social media, Press, notice boards
- Keep local councillors and community council informed
- Encourage community to be involved through schools, community organisations and businesses

Feedback and raising issues

- ▶ We welcome your feedback at all times
- ▶ Please email us at ccwel@edinburgh.gov.uk

Campaign overview



Objectives

Since the start of CCWEL construction we have been running a campaign to help

- ▶ Minimise disruption
- ▶ Keep people informed of progress
- ▶ Share information on traffic management and construction with local community
- ▶ Support the local community through disruption with regular updates encouraging people to continue to visit and shop

Longer term - Encourage people to choose active travel to visit and move through the area

Questions

Thank you