



Business and Community Forum

9th January 2023

CCWEL: Section 2 Haymarket
to Randolph Place



Balfour Beatty

◆ EDINBURGH ◆
THE CITY OF EDINBURGH COUNCIL

sustrans
JOIN THE MOVEMENT

**TRANSPORT
SCOTLAND**
The Scottish Government

Agenda

- Introduction – Rurighd McMeddes (The City of Edinburgh Council)
- Construction and traffic management – Scott Ritchie (Balfour Beatty)
- Social impact & sustainability initiatives – Duncan Gardner (Balfour Beatty)
- Questions
- Communications and engagement – Eileen Hewitt (The City of Edinburgh Council)
- Questions and AOB

Introduction

Rurighd McMeddes

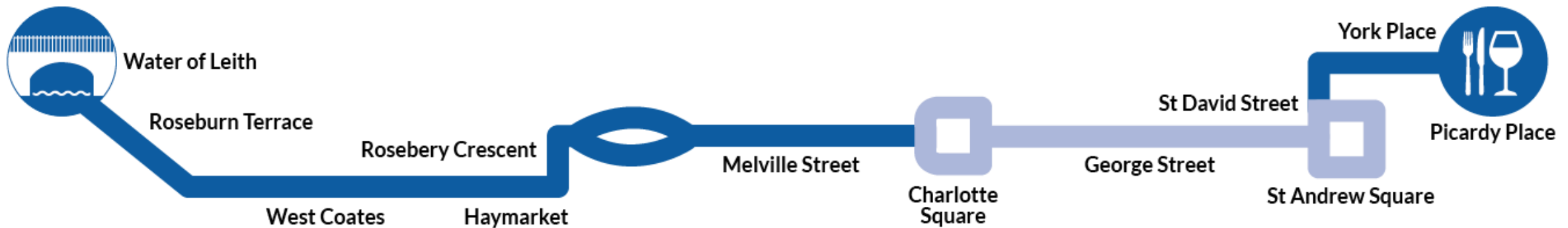
Senior Project Manager, Active Travel

The City of Edinburgh Council

Section 2 Timeline



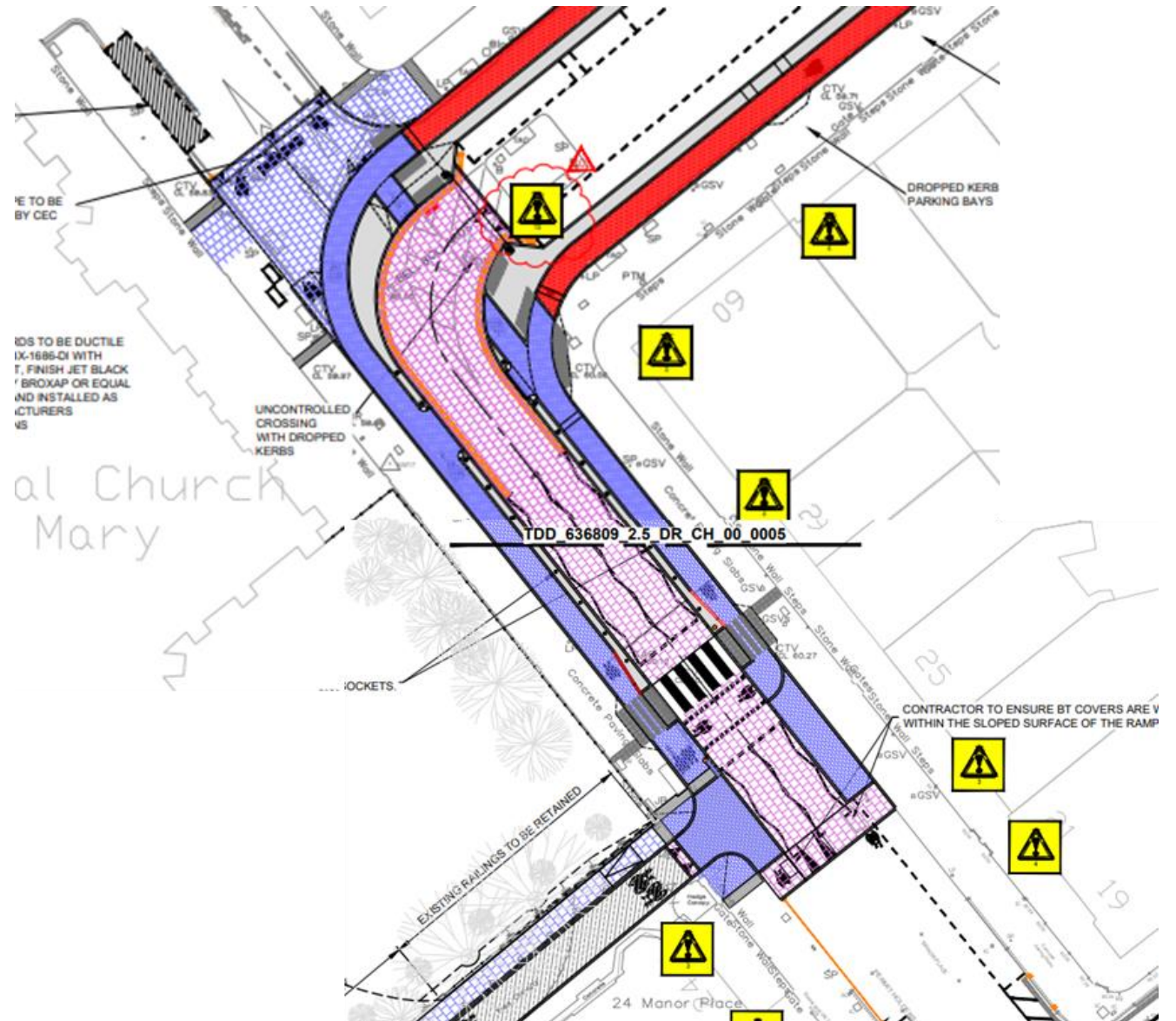
- Winter 2015/16 – Initial consultation and stakeholder engagement
- August 2016 – Approved preliminary designs
- April/May 2019 – Statutory consultation (TRO / RSO)
- June 2021 – Approval of Statutory Orders (TRO / RSO)
- October 2021 – Appointment of Balfour Beatty as Principal Contractor
- February 2022 – Work commences



CCWEL Section 2 Plans

Proposals

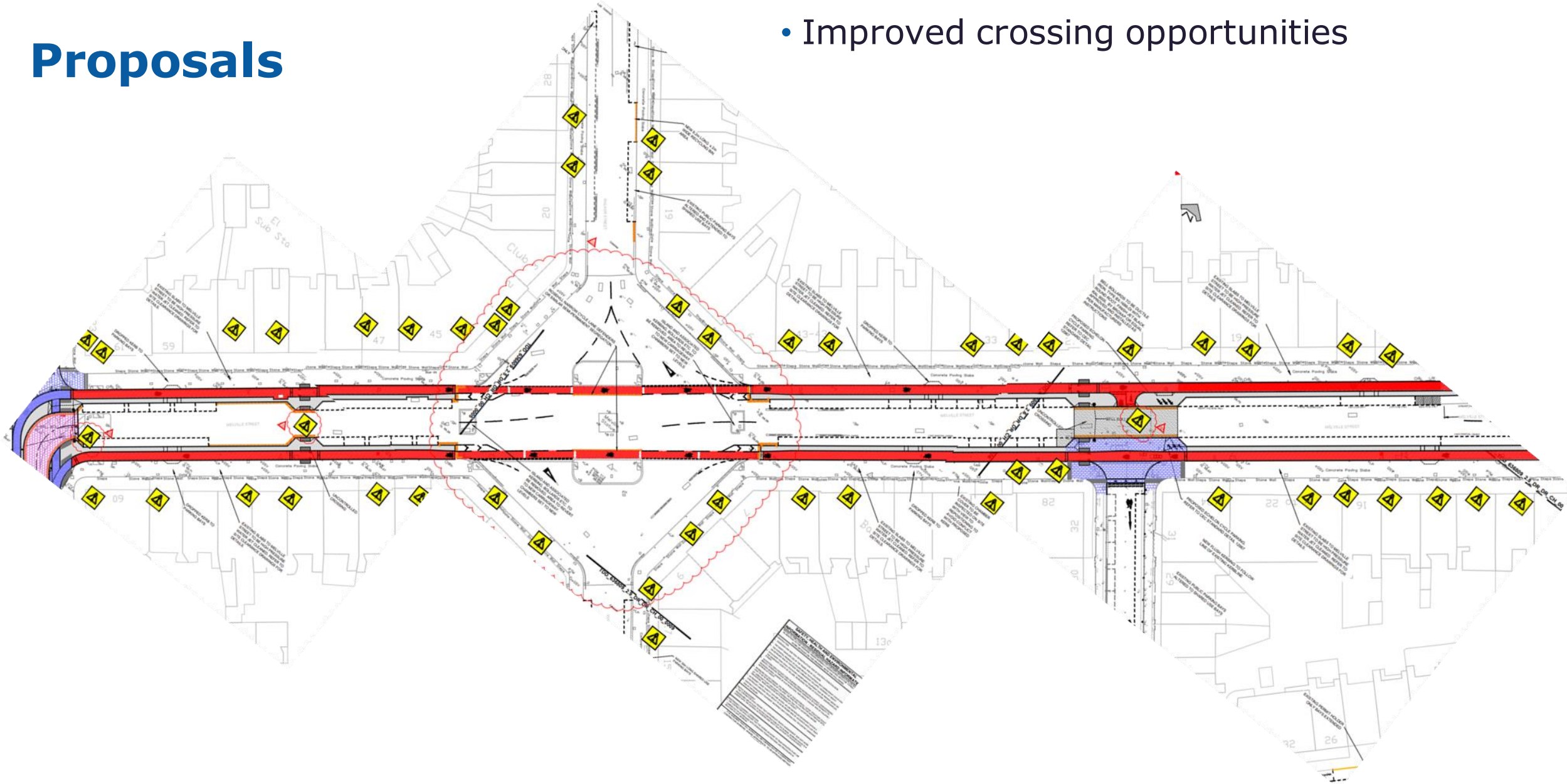
- New cycleways on Manor Place
- Manor Place closure north of Melville Street
- Raised table traffic calming and New Crossing



CCWEL Section 2 Plans

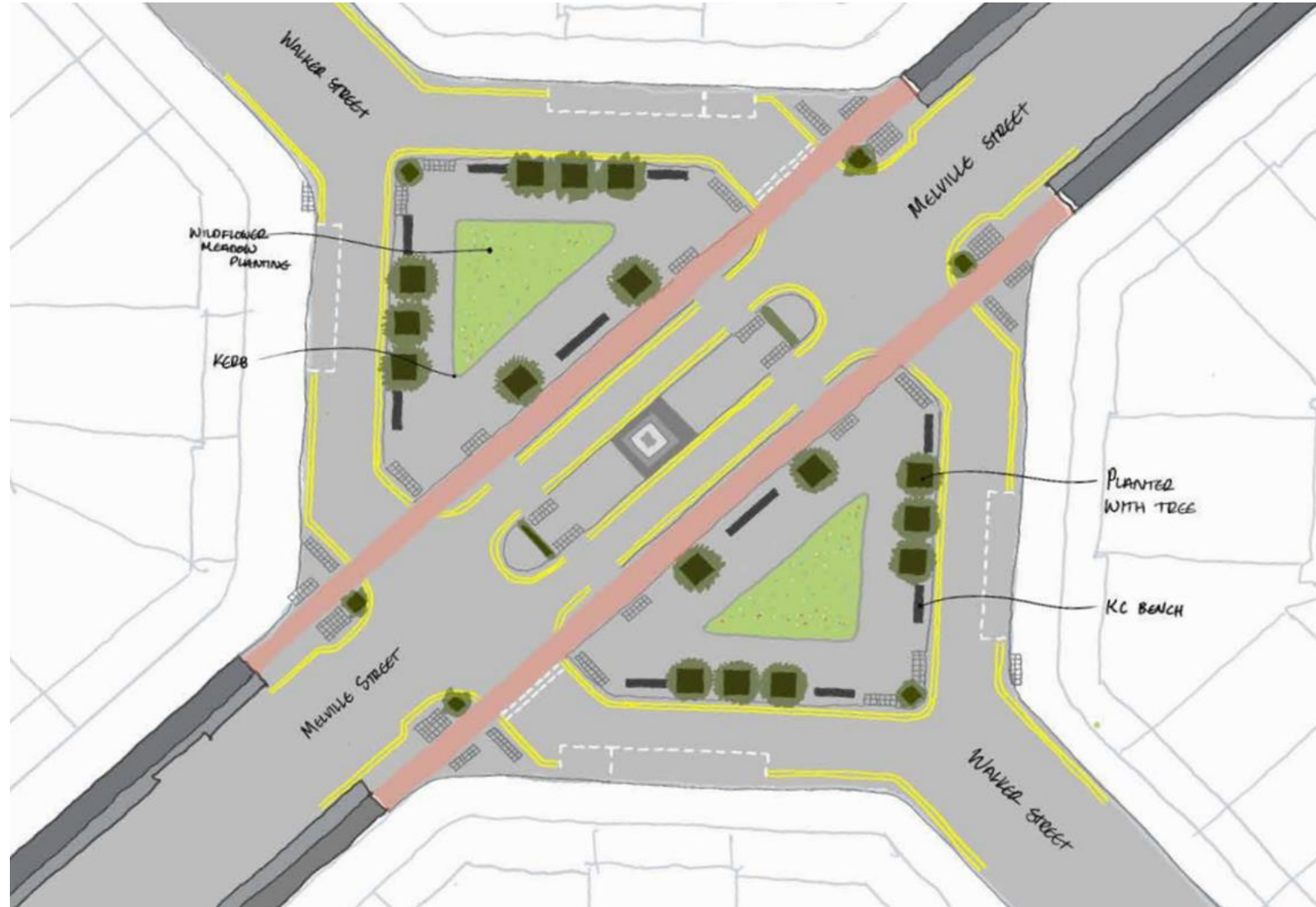
Proposals

- New protected cycleways on Melville Street
- Central parking removed
- Improved crossing opportunities



CCWEL Section 2 Plans

Proposals



Design Approach

The introduction of wildflower meadow to the central congregation area. This will provide a contrast to the wider hard surfaces and built form. Bringing some soft landscaping to a very hard area.

The benefits include increased biodiversity for birds and insect as well as providing a green space for people to sit and take a break.

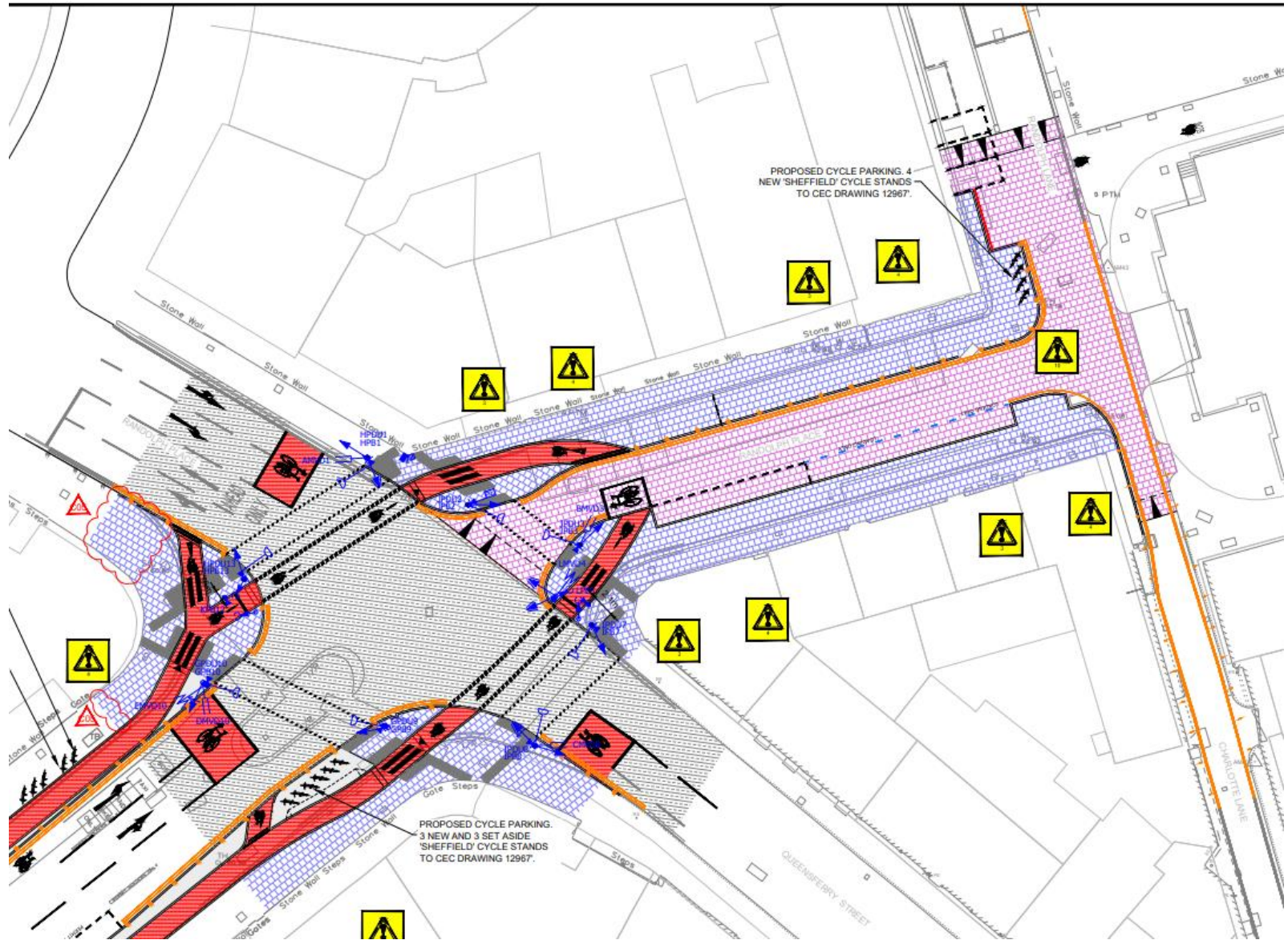
Materials

Planters, kerbs, topsoil, wildflower mix, benches.

CCWEL Section 2 Plans

Proposals

- Reconstruction of Queensferry St /Melville St junction with crossings on all sides
- Cycleways integrating into Randolph Place
- Wider footways on Randolph Place, with parking and loading on south side only
- Resurfacing of the cobbles

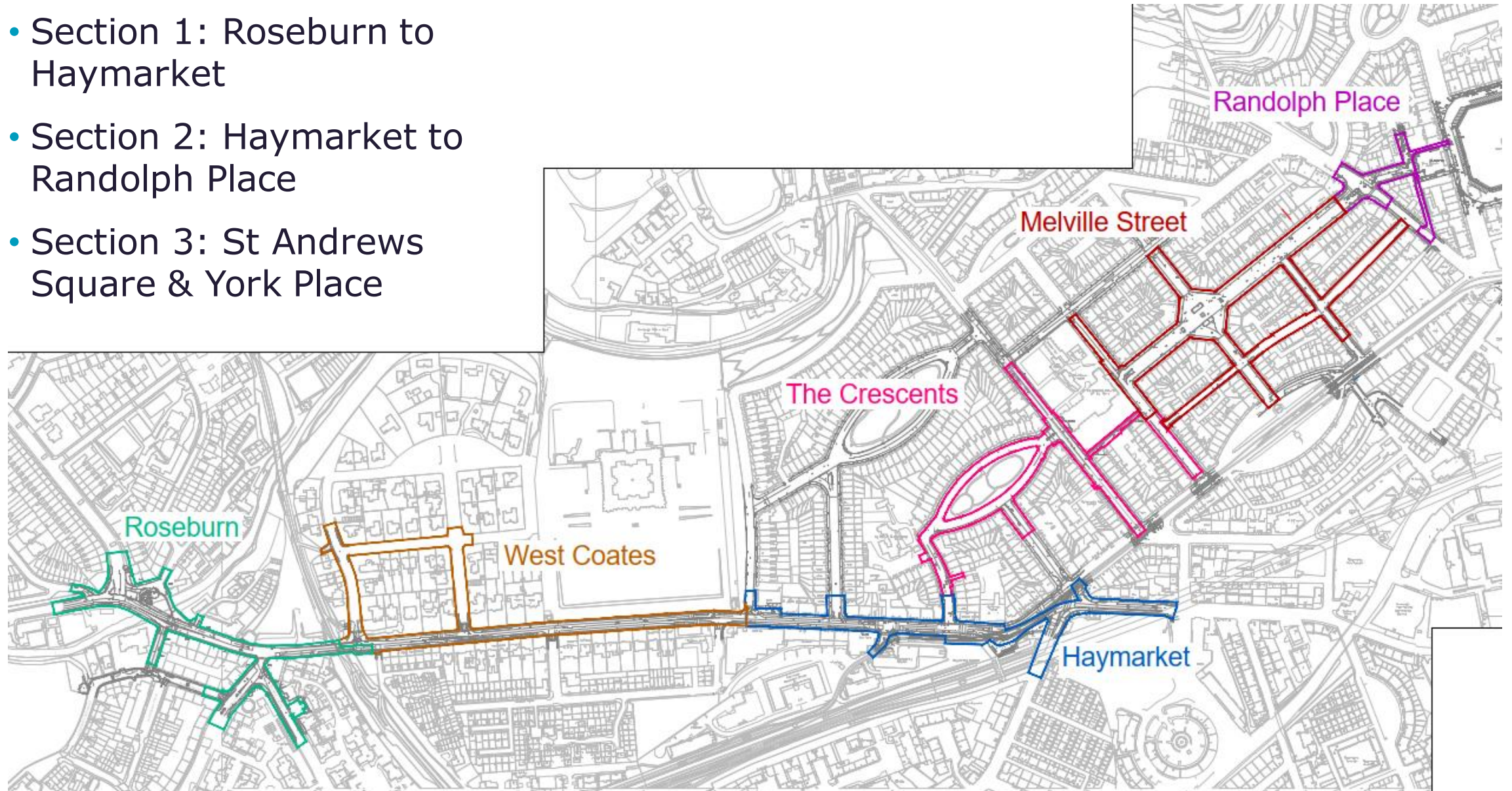


Construction and Traffic Management

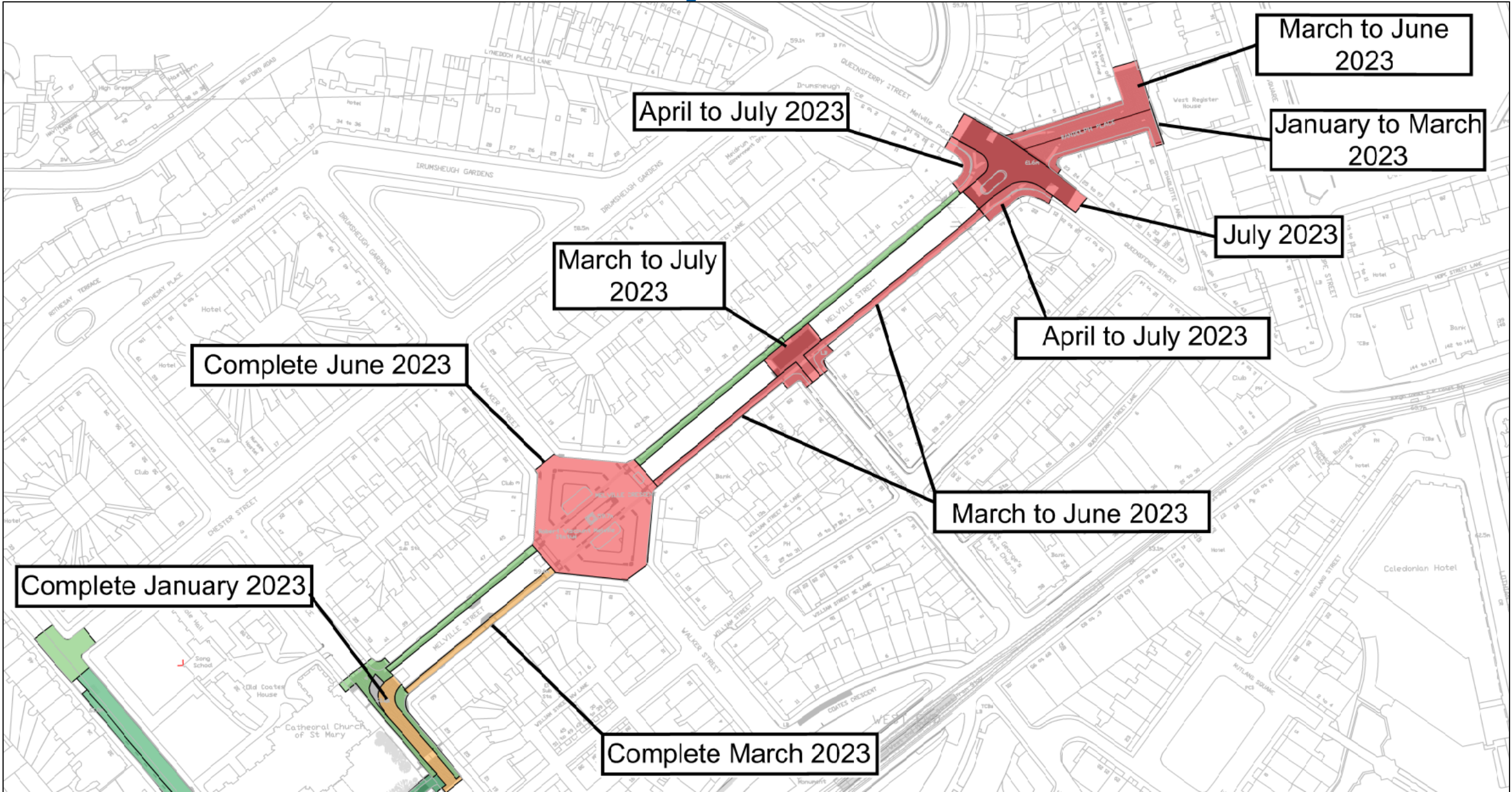
Scott Ritchie
Project Manager
Balfour Beatty

Location

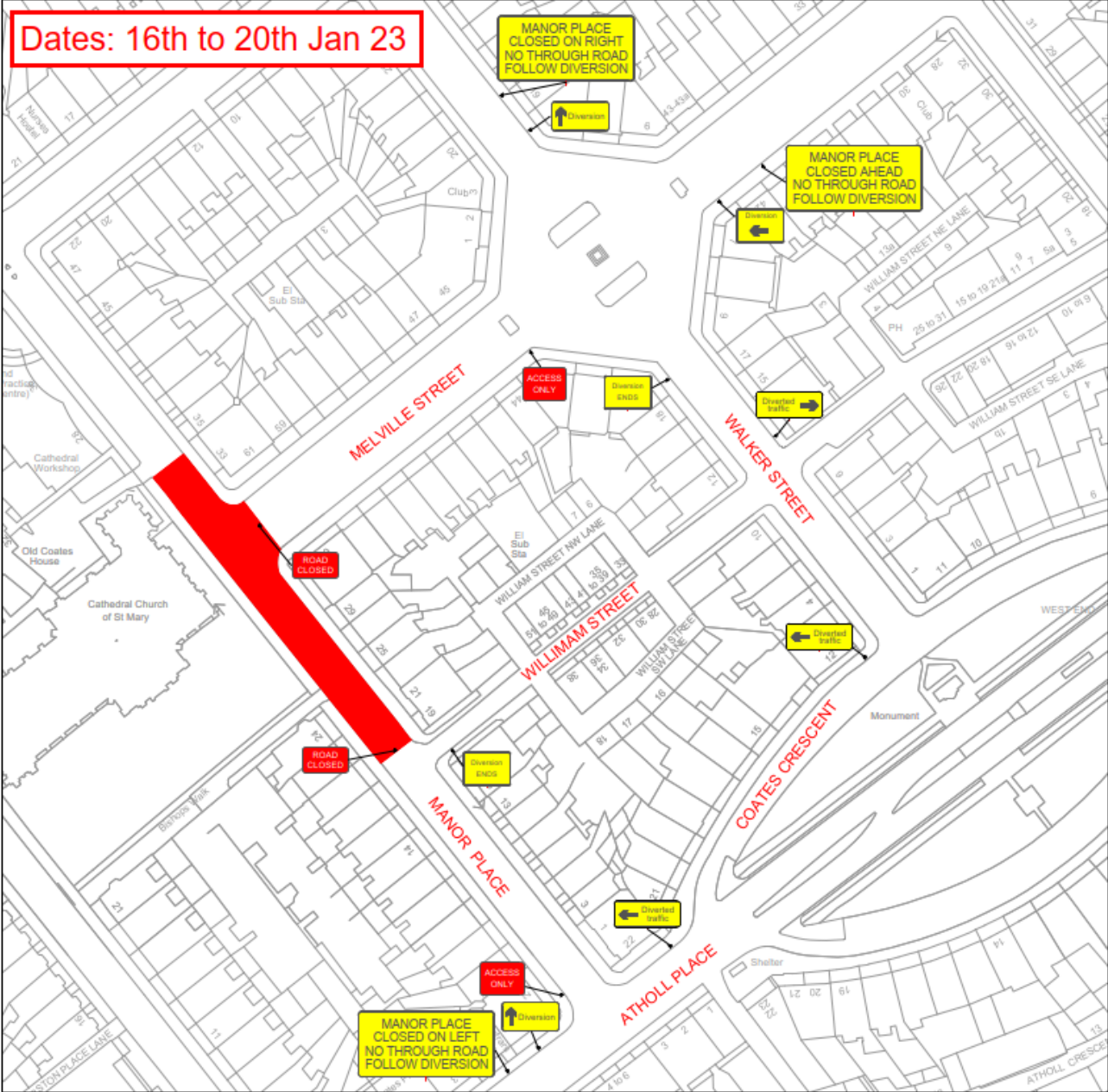
- Section 1: Roseburn to Haymarket
- Section 2: Haymarket to Randolph Place
- Section 3: St Andrews Square & York Place



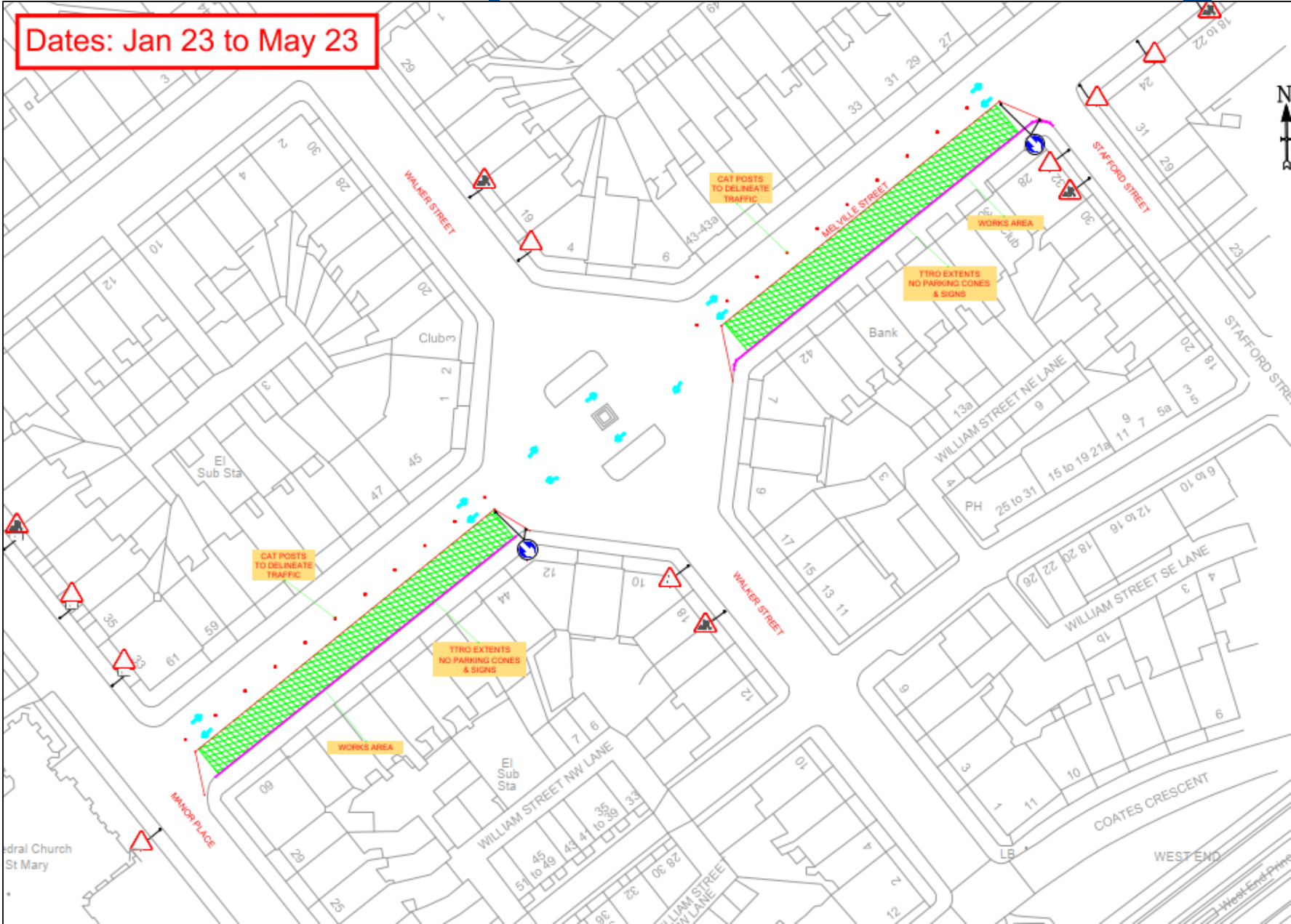
Manor Place to Randolph Place – Timescales



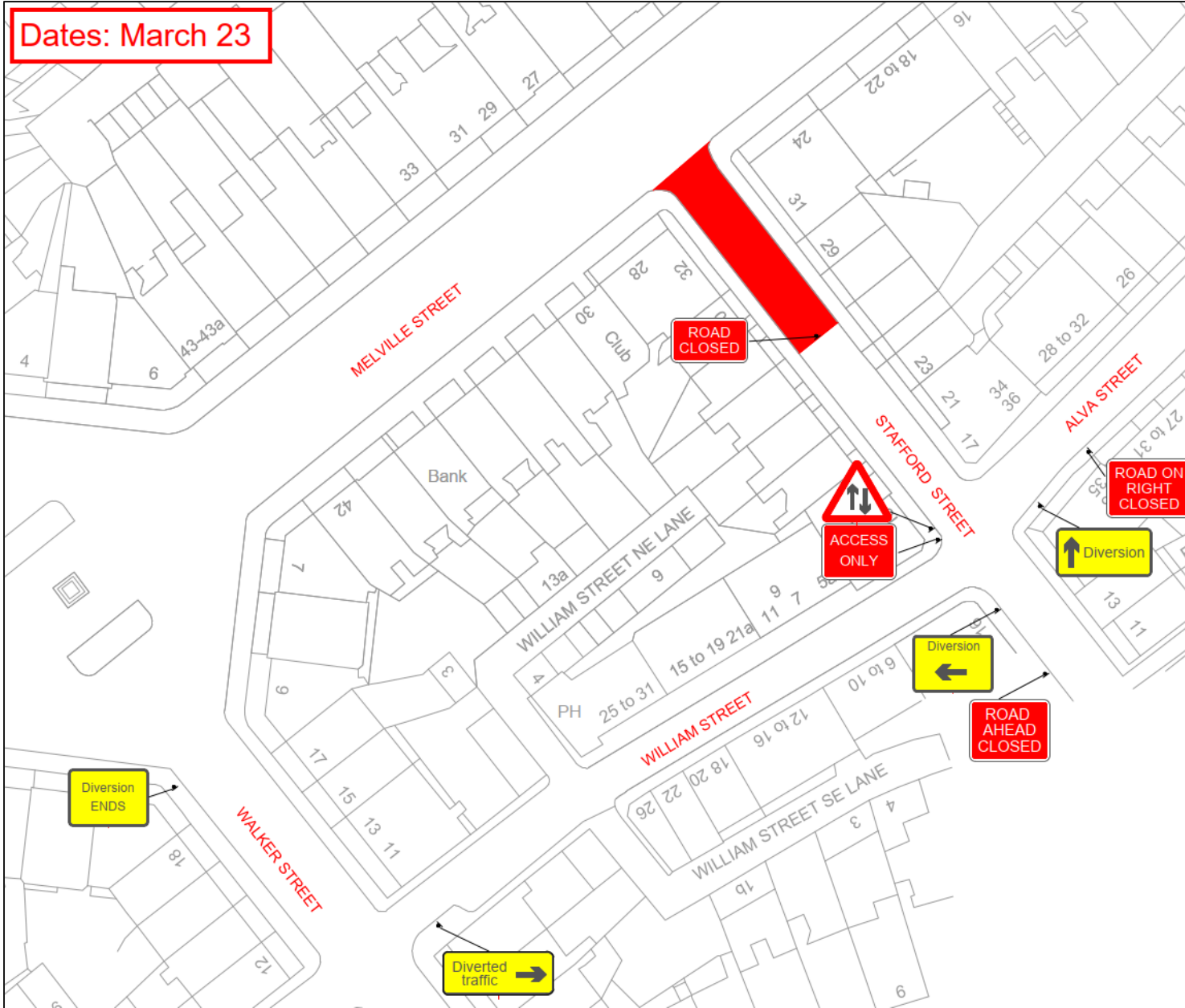
Manor PI to Randolph PI – Traffic Management



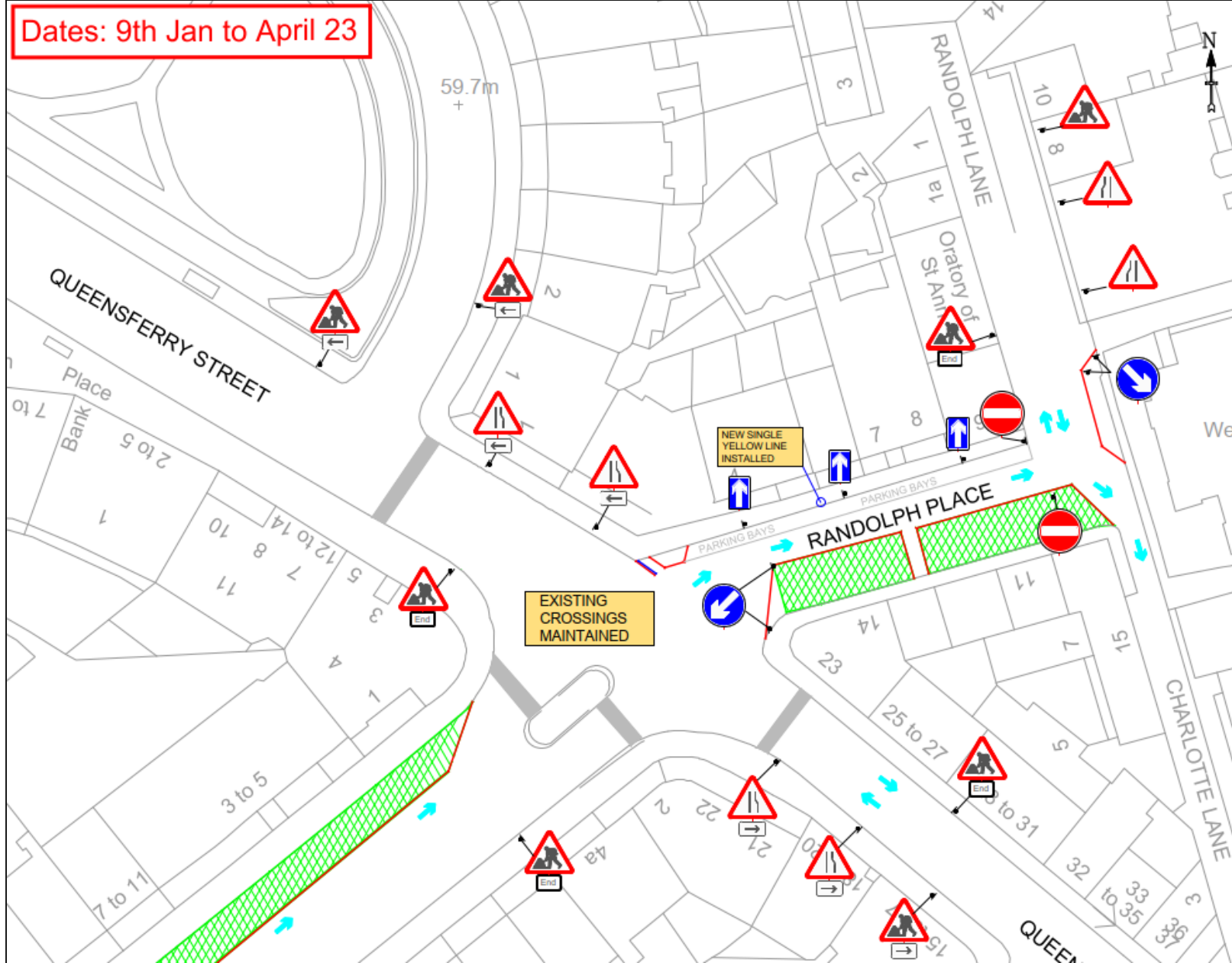
Manor Pl to Randolph Pl – Traffic Management



Manor PI to Randolph PI – Traffic Management



Manor PI to Randolph PI – Traffic Management



Manor PI to Randolph PI - key changes during works

Essential road layout and 'business as usual' changes

We will modify or reposition key items as follows:

- Parking suspension on Manor Place, Melville Street, & Randolph Place.
- Road modifications/closures to facilitate new construction works as follows:
 - Permanent closure of Manor Place junction with Melville Street
 - Suspension of the parking to facilitate the new construction on Melville Street, and Randolph Place
 - Introduction of temporary drop/off and pick up zones.
 - Introduction of temporary parking/loading bays.
- We will carry out day-to-day & week-to-week communication and liaison with stakeholders, to ensure the overall disruption is minimized.

Questions

Social impact & sustainability initiatives

Duncan Gardner
Social Impact Manager
Balfour Beatty

Balfour Beatty Sustainability Strategy



2030 target

£3 billion social value generated

Measurement

Social Value National TOMS Framework¹

Primary UN Sustainability Development Goals

8 DECENT WORK AND ECONOMIC GROWTH



11 SUSTAINABLE CITIES AND COMMUNITIES



Environment

Responding to climate change and managing our impact on the environment

Materials

Choosing the right materials, using less materials and creating value from the materials we no longer need

Communities

Improving the prosperity and wellbeing of individuals and communities

2040 Ambitions

Beyond Net Zero Carbon

Generate Zero Waste

Positively Impact More than 1 Million People



Achieve our science-based carbon reduction target

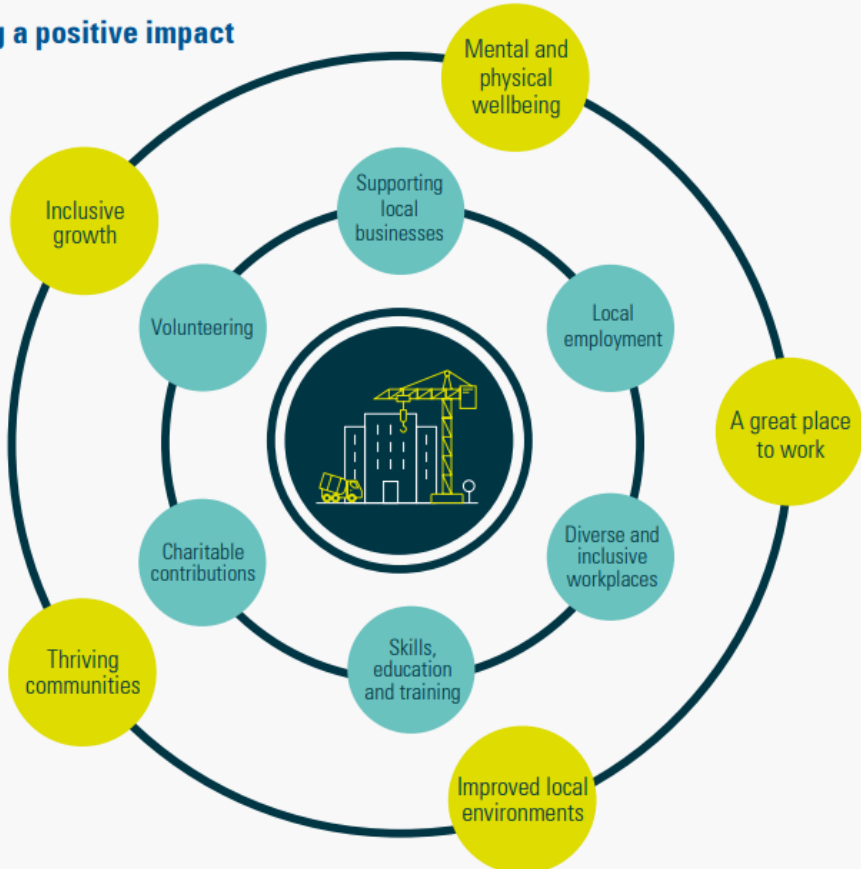
40% reduction in waste generated

£3bn social value generated



Local Sustainability Action Plans

Making a positive impact



Considerate Constructors Scheme

42/45

CCWEL first and second audit



37 Industry Average Score

2022 CODE OF CONSIDERATE PRACTICE

Respect the Community

Constructors must manage their impact on their neighbours and the public to support a positive experience, by:

- 1.1 Ensuring courteous and respectful language and behaviour in and around the construction activity.
- 1.2 Providing a safe environment, preventing unnecessary disturbance, and reducing nuisance for the community from their activities.
- 1.3 Proactively maintaining effective engagement with the community to deliver meaningful positive impacts.

Care for the Environment

Constructors must minimise their impact and enhance the natural environment, by:

- 2.1 Prioritising environmental issues to protect the natural environment and minimise negative impacts.
- 2.2 Optimising the use of resources, including minimising carbon throughout the value chain.
- 2.3 Engaging with the community to improve the local environment in a meaningful way.

Value their Workforce

Constructors must create a supportive, inclusive, and healthy workplace, by:

- 3.1 Actively encouraging and supporting an inclusive and diverse workplace.
- 3.2 Proactively supporting safe working, mental and physical wellbeing at work.
- 3.3 Providing workplaces that are well maintained, clean and secure from physical and biological hazards.

Community benefits

- An overview of Balfour Beatty's plan to make a positive Social Impact in the community, during the CCWEL project.



Clean Air Day 2022



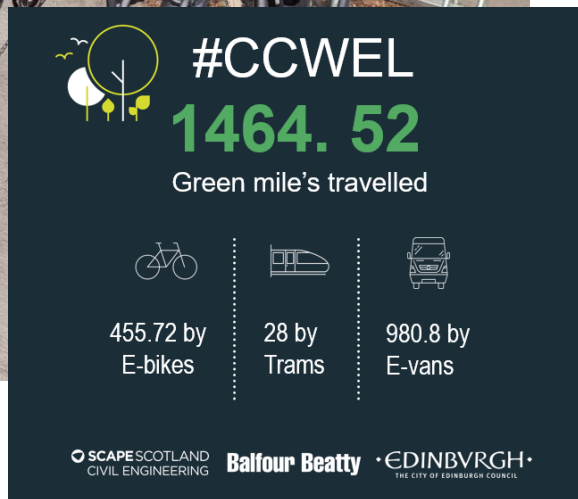
- Dr Bike session
- Police Scotland Bike Marking
- Cycle Safety sessions for local school kids
- Sustainable construction showcase
- Bling your bike stall
- Cargo bike movement

Supporting Edinburgh Food Project

- First collection ready for delivery
- Further collections planned over project lifespan



E-Bikes for site transport



- E-bikes on site for staff to access the work sites
- Reducing strain on local road network and reducing project carbon footprint
- Tracking and reporting of miles saved
- Promoting other sustainable travel options (train, tram)

Education engagement programme

- Primary school poster competition
- Careers and STEM activities for local secondary pupils



Upcoming: 'Pollinator Highway' planter workshops



- Upcycling sessions to turn waste pallets into planters for use in the community
- Supported by the Balfour Beatty team and delivered with local community groups

What matters to you?

- We want to know what matters to you in your community and where we might be able to support ideas, organisations or projects are happening in the community.
- ccwel@edinburgh.gov.uk FAO Duncan Gardner

Communications & engagement

Eileen Hewitt

Transport Officer, Active Travel

The City of Edinburgh Council

Local community engagement



Important to ensure good channels of communication between the Council, the Contractor and the community

- Working with Balfour Beatty to let you know about key dates and construction plans
- Letter drops, project updates, website, engagement sessions, social media, Press, notice boards
- Keep local councillors and community council informed
- Encourage community to be involved through schools, community organisations and businesses

Feedback and raising issues

- We welcome your feedback at all times
- Please email us at ccwel@edinburgh.gov.uk

Campaign overview



Objectives

Since the start of CCWEL construction we have been running a campaign to help

- ▶ Minimise disruption
- ▶ Keep people informed of progress
- ▶ Share information on traffic management and construction with local community
- ▶ Support the local community through disruption with regular updates encouraging people to continue to visit and shop

Longer term - Encourage people to choose active travel to visit and move through the area



Questions

Thank you