



PARK QUALITY ASSESSMENTS

2014

Contents

1	Introduction	Pg 3
2	Methodology	4
2.1	Green Flag	4
2.2	Criteria Used	4
2.3	Scoring of Criteria	5
2.4	Park Quality Score	5
2.5	Variance	5
2.6	Bandwidth Scoring	5
2.7	Sites	6
2.8	Assessors	7
3	Performance Results	8
3.1	Bandwidth Summary	8
3.2	Trend Summary	8
3.3	Park Quality Score Averages	9
3.4	Edinburgh Minimum Standard	11
4	Area Site Results	13
4.1	City Centre & Leith Neighbourhood	14
4.2	East Neighbourhood	16
4.3	North Neighbourhood	18
4.4	South Neighbourhood	20
4.5	South West Neighbourhood	22
4.6	West Neighbourhood	24
4.7	Natural Heritage Service	26
4.8	Botanical & Specialist Sites	27
5	Citywide Results	28
5.1	Top / Bottom Ranked Sites	28
5.2	Most Improved/Deteriorated Sites	29
5.3	Criteria Averages Chart	29
5.4	Results Summary	30
5.5	Site Recommendations	30
5.6	Park Improvement / Management Plans	31
6	Green Flag Awards	32
6.1	Green Flag Group Award	32
6.2	Green Flag Award List & Map	33

All photographs used in this document have been reproduced from City of Edinburgh Council stock photography. (Front Cover: Starbank Park). Park names used throughout this document may have been abbreviated where space is limited



1 Introduction

Edinburgh values its reputation as one of the most beautiful cities in Europe, renowned for its setting, history and built heritage. Parks and greenspaces are integral to this. They serve as a stage for our public lives and are settings where celebrations are held, where social exchanges take place, where friends mix, where cultures run into each other, where nature thrives, and where people revive themselves from the stresses of urban living.

The Parks and Greenspace Service is committed to providing quality parks for residents and visitors alike. There are five qualities that make a park great, and that drive the work of the Parks and Greenspace Service: They must be full of activity and invite affection. They must also be visible and accessible as well as being comfortable and safe. They also need to be places you can count on, no matter if you visit the park every day or once a year.

Using the Green Flag judging criteria all of Edinburgh's parks are assessed on an annual basis and a Parks Quality Score is produced for each site. These scores are compared to the Edinburgh Minimum Standard which has been developed to benchmark our parks and record how they are improving.

In Edinburgh the involvement of local residents through a network of Friends groups is well established. Depending on their capacity, sites host both major and local events and activities, offering a wide range of attractions to families and individuals from a diverse community.

The Parks and Greenspace Service ensures that Edinburgh's parks and greenspaces are clean, safe, colourful and diverse; they will be the setting for activities and celebrations; be well-known for their features, history and "happenings"; and be locally valued and used.

To this end our vision is:

"A quality parks system worthy of international comparison; accessible, diverse and environmentally rich; which fulfils the cultural, social and recreational needs of the people".



Figgate Park

2 Methodology

2.1 Green Flag

The Green Flag Award is the national standard for parks and green spaces. The award scheme began in 1996 as a means of recognising and rewarding the best green spaces in the country. It was also seen as a way of encouraging others to achieve the same high environmental standards, creating a benchmark of excellence in recreational green areas.



2.2 Criteria used

Whilst the Green Flag Award contains both desk and field research, this project was limited to site based assessments carried out by Council officers, external partners and members of the community trained in assessing parks using Green Flag criteria. Thus the final 'Parks Quality Score' (PQS) should not be read as the site's score against the Green Flag Award but should be used for indicative purposes only.

Although some criteria are difficult to assess during a field visit, the Green Flag Forum evaluated criteria in a desktop exercise and provided guidance for allocating scores. Site managers are asked to score the 'desktop' criteria on an annual basis.

Listed below are the criteria that were used in the quality assessments:

A Welcoming Park

- Welcoming
- Good and safe access
- Signage
- Equal access for all

Healthy, Safe and Secure

- Safe equipment facilities
- Personal security in park
- Dog fouling
- Appropriate provision of facilities
- Quality of facilities

Clean and Well Maintained

- Litter and waste management
- Grounds maintenance and horticulture
- Buildings and infrastructure maintenance
- Equipment maintenance

Sustainability

- Environmental sustainability energy and natural resource conservation, pollution (*Desktop Assessment*)
- Pesticides (*Desktop Assessment*)
- Peat use (*Desktop Assessment*)
- Waste minimisation (*Desktop Assessment*)
- Arboriculture and woodland management

Conservation and Heritage

- Conservation of natural features, wild fauna and flora
- Conservation of landscape features (*Desktop Assessment*)
- Conservation of buildings and structures

Community Involvement

- Appropriate provision for the community (*Desktop Assessment*)
- Community involvement in management and development including outreach work (*Desktop Assessment*)

Marketing

- Marketing and promotion (*Desktop Assessment*)
- Provision of appropriate information
- Provision of appropriate educational interpretation/information

Those not currently used are

Management

- Implementation of the management plan

2.3 Scoring of Criteria

Each individual criterion was scored out of 10. Criteria that did not apply to a particular site – e.g. ‘conservation of buildings or structures’ on a site where no buildings or structures are present – were scored as not applicable and were therefore not included in the total score or average calculations.

The Parks & Greenspace Forum agreed to use the scoring system below to assess their sites.

Score	0	1	2	3	4	5	6	7	8	9	10
Bandwidth	N/A	Very Poor	Low Poor	Mid Poor	High Poor	Low Fair	High Fair	Good	Very Good	Excellent	Exceptional

2.4 Park Quality Score

Park quality scores were obtained by adding together all the criteria scores and dividing the total by the number of applicable criteria resulting in an average score. This score is then multiplied by 100 to obtain a Park Quality Score (PQS). The maximum score available was therefore 100% for each site.

2.5 Variance

In an attempt to ensure that a consistent and accurate score for each site was achieved, there was additional guidance and awareness training offered to assessors. Scores and comments from the previous year’s assessment, along with improvements carried out over the last 12 months were also provided to assessors so as to provide a starting point, with improvements and deterioration in quality reflected in the scoring.

Each site was assessed once by a team of assessors.

2.6 Bandwidth Scoring

The system used in 2009 saw the introduction of bandwidths. This was to accommodate the natural variance of assessors both in terms of reliability and repeatability. The accepted variance of 10% meant that the forum opted for bandwidths instead of a % score. The forum went one step further and instead of simply creating a bandwidth for scores out of 100%, they looked at each type of park and allocated bandwidths based on the expected quality and appropriateness of each type of site.

The table below shows the park classifications and bandwidths agreed.

Classification	Poor	Fair	Good	Min Edin Std	Good +	Very Good	Excellent
Premier Park	35% - 49%	50% - 64%	65% - 69%	70%	70% - 74%	75% - 84%	85% +
City Park	25% - 39%	40% - 49%	50% - 59%	50%		60% - 69%	70% +
Community Park	20% - 34%	35% - 44%	45% - 54%	45%		55% - 64%	65% +
Recreation Ground	15% - 29%	30% - 39%	40% - 49%	40%		50% - 59%	60% +
Gardens	25% - 39%	40% - 49%	50% - 59%	50%		60% - 69%	70% +
Natural	30% - 44%	45% - 54%	55% - 59%	60%	60% - 64%	65% - 74%	75% +
Cemeteries	25% - 39%	40% - 49%	50% - 59%	50%		60% - 69%	70% +

2.7 Sites

Due to continuing tram works surrounding Atholl Crescent and Coates Crescent it was agreed that again these sites would not be assessed in 2014. No other additions or removals were identified.

Sites excluded from the assessment list for 2014

Atholl Crescent (City Centre & Leith Neighbourhood)
Coates Crescent (City Centre & Leith Neighbourhood)

In 2010, as part of the Open Space Strategy and to ensure that Edinburgh complied with the Green Flag Authority Group Award approach (see section 6.1) to assess all accessible green spaces, it was decided that Cemeteries should be assessed using the Green Flag criteria. Assessments were undertaken of 32 cemeteries in 2010, 2011 and 2012. A proposal was made in 2013 that Cemeteries would no longer be assessed due to the unchanging nature of many of the sites, unless specific sites are identified for improvement or Green Flag Award but would not form part of any area calculations.

In total **137 sites** were identified to be assessed in 2014.



Buttercup Farm Park which will be added to the assessment list in 2015

2.8 Assessors

This year saw 14 teams undertake the assessments between April and July. Each team was made up from an experienced lead officer (in most cases a formal Green Flag judge) with up to four assistant assessors. Assistants were made up from Council officers and members of the community.

Awareness of the Green Flag scheme and guidance on scoring criteria was provided for all new assessors.

In total 69 assessors were used to carry out this year's assessments and since 2008, 130 assessors have taken part with many being involved for two or more years.

The table below shows the number of assessors taking part each year since 2008

	2008	2009	2010	2011	2012	2013	2014
Parks & Greenspace	17	25	12	10	10	13	22
Neighbourhood Staff	7	20	21	14	14	19	25
Other Council Staff	0	6	5	4	4	9	7
External	1	3	3	1	0	0	0
Community Members	0	10	10	6	12	6	15
Total	25	64	51	35	40	47	69



Blackford Pond

3 Performance Results

3.1 Bandwidth Summary

The tables below show a summary of the bandwidths for 2014.

Classification

Classification	No of Sites	Excellent		Very Good		Good+		Good		Fair		Poor	
		No	%	No	%	No	%	No	%	No	%	No	%
Premier Parks	6	0	0%	0	0%	2	33%	1	17%	3	50%	0	0%
City Parks	12	0	0%	8	67%	n/a		3	25%	1	8%	0	0%
Community Parks	79	19	24%	39	49%	n/a		18	23%	3	4%	0	0%
Rec. Grounds	6	1	17%	2	33%	n/a		3	50%	0	0%	0	0%
Gardens	15	3	20%	3	20%	n/a		7	47%	2	13%	0	0%
Natural Parks	19	3	16%	9	47%	4	21%	1	5%	1	5%	1	5%
Citywide	137	26	19%	61	45%	6	4%	33	24%	10	7%	1	1%

Neighbourhood

Neighbourhood	No of Sites	Excellent		Very Good		Good+		Good		Fair		Poor	
		No	%	No	%	No	%	No	%	No	%	No	%
CC & Leith	19	2	11%	7	37%	1	5%	4	21%	5	26%	0	0%
East	22	6	27%	9	41%	1	5%	4	18%	2	9%	0	0%
North	15	1	7%	10	67%	0	0%	4	27%	0	0%	0	0%
South	23	9	39%	8	35%	3	13%	3	13%	0	0%	0	0%
South West	30	6	20%	11	37%	0	0%	10	33%	3	10%	0	0%
West	28	2	7%	16	57%	1	4%	8	29%	0	0%	1	4%
Citywide	137	26	19%	61	45%	6	4%	33	24%	10	7%	1	1%

3.2 Short Term Trend

The tables below and overleaf show a summary of the site bandwidth trends against the 2013 site results.

Classification

Classification	No of Sites	Improved		Deteriorated		Static		New	
		No	%	No	%	No	%	No	%
Premier Parks	6	0	0%	2	33%	4	67%	0	0%
City Parks	12	0	0%	2	17%	10	83%	0	0%
Community Parks	79	15	19%	8	10%	56	71%	0	0%
Recreation Grounds	6	1	17%	1	17%	4	67%	0	0%
Gardens	15	1	7%	2	13%	12	80%	0	0%
Natural Parks	19	5	26%	3	16%	11	58%	0	0%
Citywide	137	22	16%	18	13%	97	71%	0	0%

Neighbourhood

Neighbourhood	No of Sites	Improved		Deteriorated		Static		New	
City Centre & Leith	19	2	11%	2	11%	15	79%	0	0%
East	22	6	27%	2	9%	14	64%	0	0%
North	15	2	13%	5	33%	8	53%	0	0%
South	23	3	13%	0	0%	20	87%	0	0%
South West	30	3	10%	3	10%	24	80%	0	0%
West	28	6	21%	6	21%	16	57%	0	0%
Citywide	137	22	16%	18	13%	97	71%	0	0%

3.3 Park Quality Score Averages

The tables and graph below and overleaf show the average PQS score over the last five years.

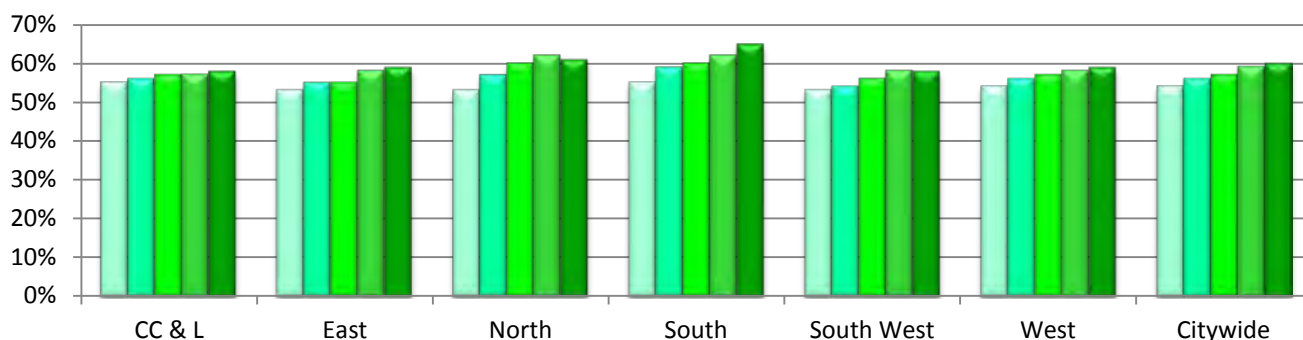
Classification

Classification	No of Sites	2010 Avg PQS	2011 Avg PQS	2012 Avg PQS	2013 Avg PQS	2014 Avg PQS	Trend
Premier Parks	6	63%	65%	65%	67%	66%	↓
City Parks	12	52%	58%	60%	61%	59%	↓
Comm. Parks	79	52%	54%	56%	58%	59%	↑
Rec. Grounds	6	46%	48%	49%	50%	52%	↑
Gardens	15	56%	57%	58%	58%	59%	↑
Natural Parks	19	60%	63%	65%	64%	65%	↑
Citywide	137	54%	56%	57%	59%	60%	↑

Neighbourhood Areas

Neighbourhood	No of Sites	2010 Avg PQS	2011 Avg PQS	2012 Avg PQS	2013 Avg PQS	2014 Avg PQS	Trend
CC & Leith	19	55%	56%	57%	57%	58%	↑
East	22	53%	55%	55%	58%	59%	↑
North	15	54%	57%	60%	62%	61%	↓
South	23	55%	59%	60%	62%	65%	↑
South West	30	53%	54%	56%	58%	58%	↔
West	28	54%	56%	57%	58%	59%	↑
Citywide	137	54%	56%	57%	59%	60%	↑

■ 2010 ■ 2011 ■ 2012 ■ 2013 ■ 2014



Neighbourhood Partnership Areas

Partnership Area	No of Sites	2010 Avg PQS	2011 Avg PQS	2012 Avg PQS	2013 Avg PQS	2014 Avg PQS	Trend
Almond	18	54%	56%	58%	57%	58%	↑
City Centre	8	55%	57%	59%	58%	58%	↔
Craigtinny / Duddingston	6	56%	55%	57%	58%	62%	↑
Forth	8	51%	54%	58%	59%	57%	↓
Inverleith	7	56%	63%	63%	65%	67%	↑
Leith	11	55%	55%	55%	57%	57%	↔
Liberton / Gilmerton	11	52%	56%	56%	59%	62%	↑
Pentlands	16	53%	53%	56%	59%	57%	↓
Portobello / Craigmillar	16	51%	55%	54%	58%	58%	↔
South Central	12	59%	62%	64%	66%	67%	↑
South West	14	52%	55%	56%	58%	59%	↑
Western Edinburgh	10	52%	54%	58%	60%	61%	↑



Harrison Park

3.4 Edinburgh Minimum Standard

The Edinburgh Minimum standard was agreed following the assessments in 2008 to provide a minimum benchmark of quality for each park classification.

The table below shows the park quality scores agreed as the Edinburgh Minimum Standards for each type of park.

	Premier Parks	City Parks	Community Parks	Recreation Grounds	Gardens	Natural Parks	Cemeteries
Edinburgh Minimum Standard	70%	50%	45%	40%	50%	60%	50%

The table below shows the % of sites meeting the Edinburgh Minimum Standard over the last five years.

Classification

Classification	No Sites	2010		2011		2012		2013		2014		Trend
Premier Parks	6	0	0%	2	33%	3	50%	3	50%	2	33%	↓
City Parks	12	7	54%	10	83%	11	92%	11	92%	11	92%	↔
Comm. Parks	79	57	73%	70	89%	74	93%	77	97%	76	96%	↓
Rec. Grounds	6	5	83%	5	83%	6	100%	6	100%	6	100%	↔
Gardens	15	12	80%	13	76%	14	93%	14	93%	13	87%	↓
Natural Parks	19	9	60%	11	69%	13	81%	15	79%	16	84%	↑
Citywide	137	90	68%	111	82%	121	82%	126	92%	124	91%	↓

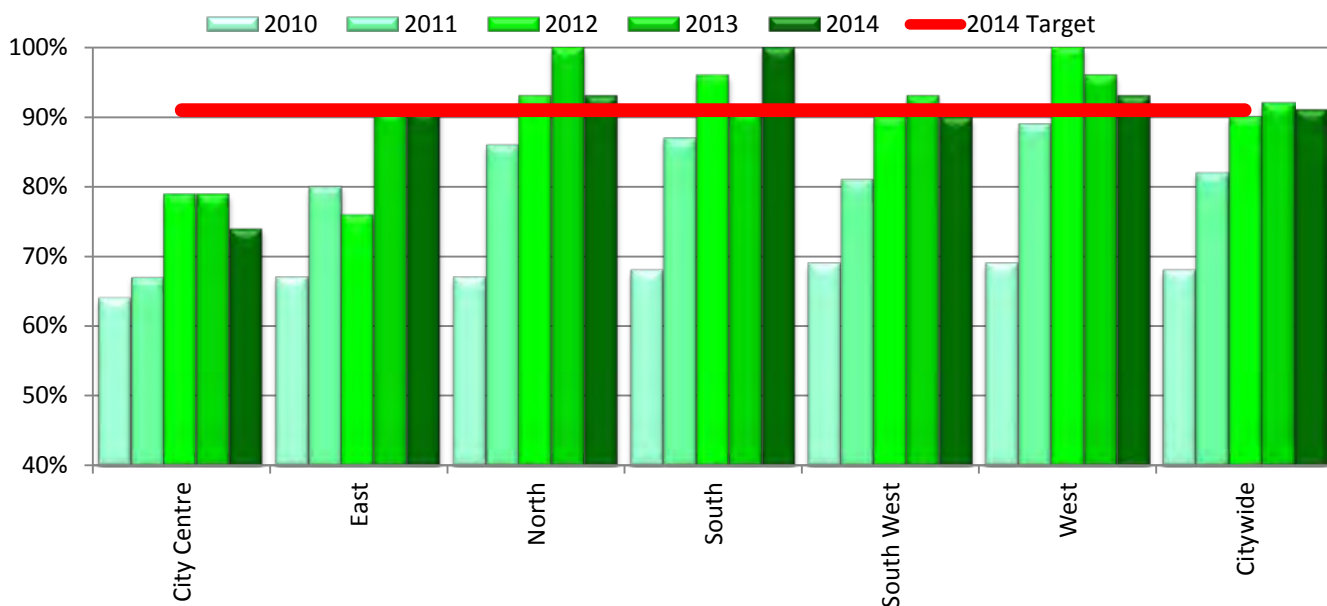
Performance indicators have been developed to show the percentage of sites in each Neighbourhood that meet this standard with targets set to drive improvement. The targets through to 2014 are listed below.

	2008	2009	2010	2011	2012	2013	2014
Target	55%	65%	70%	75%	80%	90%	91%

The tables and graphs below and overleaf show the number and percentage of sites meeting the Edinburgh Minimum Standard in each neighbourhood and neighbourhood partnership area against the annual target over the last five years.

Area	No Sites	2010		2011		2012		2013		2014		Tr	Target Met
CC& Leith	19	15	64%	14	67%	15	79%	15	79%	14	74%	↓	No
East	22	14	67%	16	80%	16	76%	20	91%	20	91%	↔	Yes
North	15	8	67%	12	86%	13	93%	15	100%	14	93%	↓	Yes
South	23	15	68%	20	87%	22	96%	21	91%	23	100%	↑	Yes
South West	30	20	69%	25	81%	28	90%	28	93%	27	90%	↓	No
West	28	18	69%	24	89%	27	100%	27	96%	26	93%	↓	Yes
Citywide	137	90	68%	111	82%	121	90%	126	92%	124	91%	↓	Yes

Edinburgh Minimum Standard Met



Area	No of Sites	2010 % meeting Std	2011 % meeting Std	2012 % meeting Std	2013 % meeting Std	2014 % meeting Std	Trend	Target Met
Almond	18	69%	94%	100%	94%	89%	↓	No
City Centre	8	60%	60%	88%	75%	63%	↓	No
Craigentiny / Duddingston	6	67%	67%	67%	83%	100%	↑	Yes
Forth	8	75%	88%	100%	100%	100%	↔	Yes
Inverleith	7	33%	83%	83%	100%	86%	↓	No
Leith	11	90%	73%	73%	82%	82%	↔	No
Liberton / Gilmerton	11	73%	91%	100%	91%	100%	↑	Yes
Pentlands	16	81%	82%	88%	94%	94%	↔	Yes
Portobello / Craigmillar	16	67%	86%	80%	94%	88%	↓	No
South Central	12	64%	83%	92%	92%	100%	↑	Yes
South West	14	54%	79%	93%	93%	86%	↓	No
Western Edinburgh	10	70%	80%	100%	100%	100%	↔	Yes

4 Area Site Results

The tables on the following pages show the quality bandwidth over the last four years in each Neighbourhood and Management Area. In addition, graphs have been included to demonstrate the Neighbourhood and Management Area average park's quality score, percentage of sites meeting the Edinburgh Minimum Standard, bandwidths, short term trend and selected criteria averages.



Dunbar's Close Garden



Princes Street Gardens



The Meadows



Hermitage of Braid

4.1 City Centre & Leith Neighbourhood

Site Name	Classification	2011	2012	2013	2014	Trend	Std Met
Atholl Crescent	Garden	Good	n/a	n/a	n/a		
Bellevue Crescent Gdns	Garden	Fair	Fair	Fair	Fair	↔	No
Calton Hill	Premier Park	Good	Good+	Good	Fair	↓	No
Coates Crescent	Garden	Good	n/a	n/a	n/a		
Dalmeny Street Park	Community Park	Excellent	Excellent	V. Good	V. Good	↔	Yes
Dunbars Close Garden	Garden	V. Good	V. Good	V. Good	Excellent	↑	Yes
Gayfield Square	Garden	Fair	Good	Good	Good	↔	Yes
Granny's Green	Garden	Fair	Good	Good	Fair	↓	No
Henderson Gardens Park	Community Park	Good	Fair	Good	Good	↔	Yes
Hillside Crescent Gardens	Garden	Fair	Good	Good	Good	↔	Yes
Hopetoun Cres. Gdns	Garden	Excellent	Excellent	Excellent	Excellent	↔	Yes
Keddie Park	Community Park	Fair	Fair	Fair	Fair	↔	No
Leith Links	Premier Park	Fair	Fair	Fair	Fair	↔	No
London Road Gardens	City Park	V. Good	V. Good	V. Good	V. Good	↔	Yes
Montgomery Street Park	Community Park	V. Good	V. Good	V. Good	V. Good	↔	Yes
Pilrig Park	Community Park	Good	V. Good	Good	V. Good	↑	Yes
Princes Street Gardens	Premier Park	Good+	Good+	Good+	Good+	↔	Yes
Redbraes Park	Community Park	V. Good	Good	V. Good	V. Good	↔	Yes
Regent Road Park	Community Park	V. Good	V. Good	V. Good	V. Good	↔	Yes
St Mark's Park	Community Park	V. Good	V. Good	V. Good	V. Good	↔	Yes
Taylor Gardens	Garden	Good	Good	Good	Good	↔	Yes

█ = Green Flag Award Site



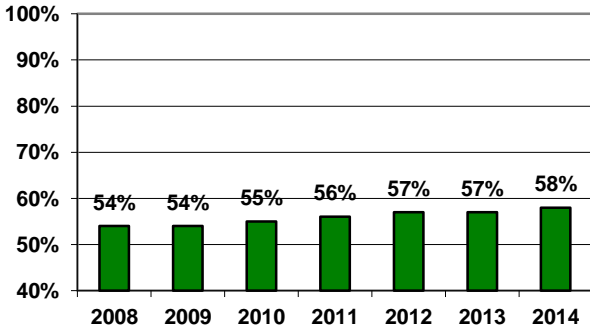
Montgomery Street Park



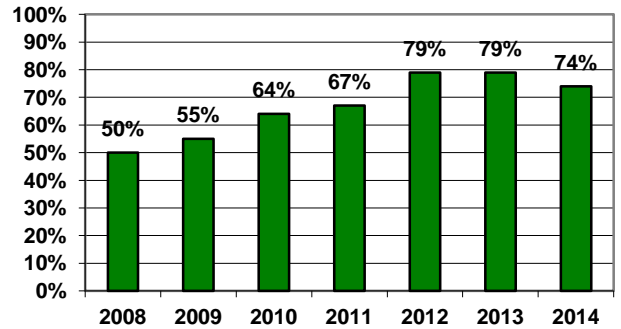
Leith Links

City Centre & Leith Neighbourhood

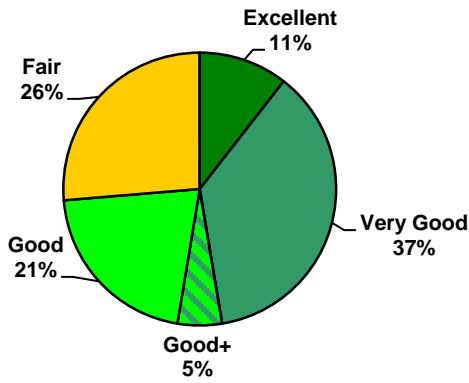
Average PQS



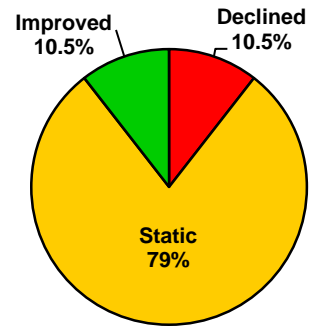
% of sites meeting Edinburgh Minimum Standard



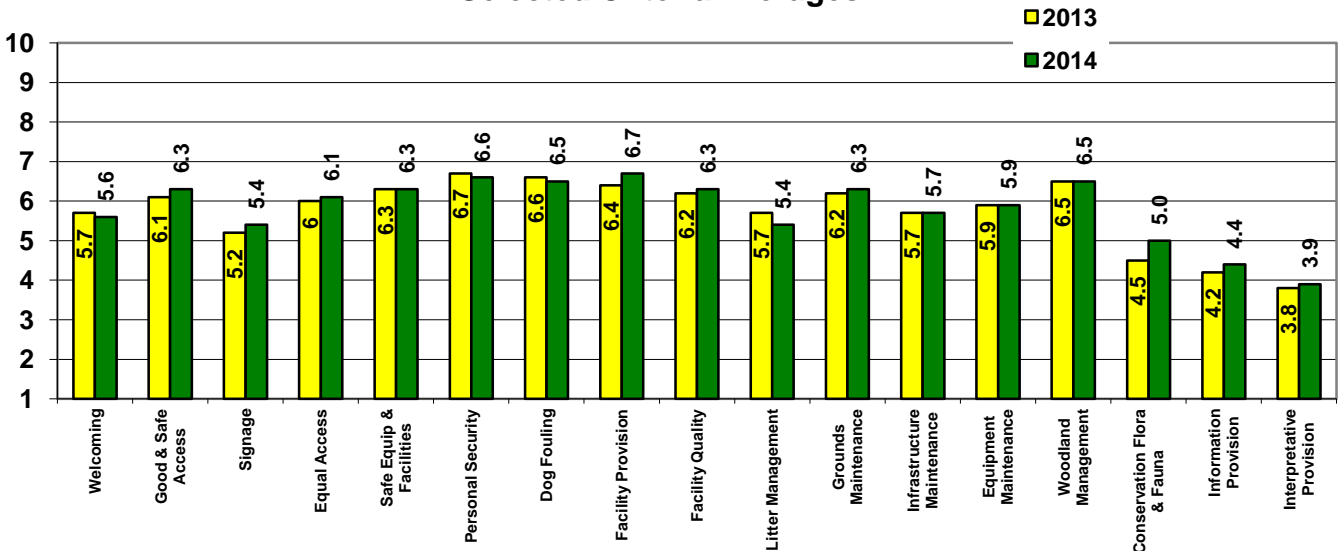
Bandwidths



Short Term Trend



Selected Criteria Averages



4.2 East Neighbourhood

Site Name	Classification	2011	2012	2013	2014	Trend	Std Met
Abercorn Park	Community Park	V. Good	V. Good	Excellent	Excellent	↔	Yes
Baronscourt Park	Community Park	Fair	Fair	Fair	Good	↑	Yes
Bingham Park	Community Park	Good	Good	Good	Good	↔	Yes
Brighton Park	Community Park	V. Good	V. Good	V. Good	V. Good	↔	Yes
Brunstane Mill	Natural Park			Good+	Good+	↔	Yes
Cairntows Park	Community Park	Good	Good	Good	Good	↔	Yes
C'millar Castle & H'hill	Natural Park	V. Good	V. Good	V. Good	V. Good	↔	Yes
Figgate Burn Park	Community Park	Excellent	Excellent	Excellent	Excellent	↔	Yes
Hays Park	Community Park	Good	Good	Good	Fair	↓	No
Hunter's Hall Park	City Park	Fair	Fair	Fair	Fair	↔	No
Jewel Park	Community Park	Fair	Good	Good	V. Good	↑	Yes
Joppa Quarry Park	Community Park	Good	Fair	Good	V. Good	↑	Yes
Lochend Park	Community Park	V. Good	Excellent	Excellent	Excellent	↔	Yes
Magdalene Glen	Community Park		Fair	V. Good	V. Good	↔	Yes
Meadowfield Park	Community Park	Good	Good	V. Good	Excellent	↑	Yes
Meadows Yard	Natural Park	Good	Good	Good+	V. Good	↑	Yes
Newcraighall Park	Community Park	V. Good	V. Good	V. Good	V. Good	↔	Yes
Portobello Comm Gdn	Community Park	Excellent	Excellent	Excellent	Excellent	↔	Yes
Rosefield Park	Community Park	V. Good	V. Good	Excellent	Excellent	↔	Yes
Seafield Rec Ground	Recreation ground	V. Good	V. Good	V. Good	Good	↓	Yes
Sir Harry Lauder Garden	Garden	V. Good	Good	V. Good	V. Good	↔	Yes
Straiton Place Park	Community Park	V. Good	V. Good	Good	V. Good	↑	Yes

 = Green Flag Award Site



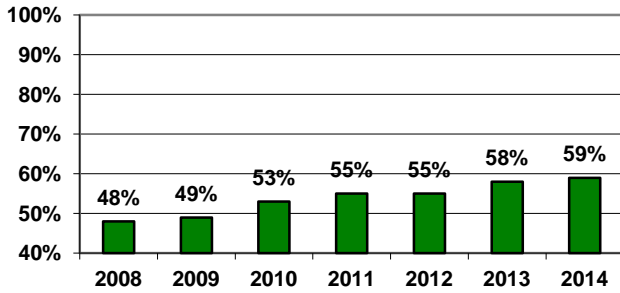
Joppa Quarry Park



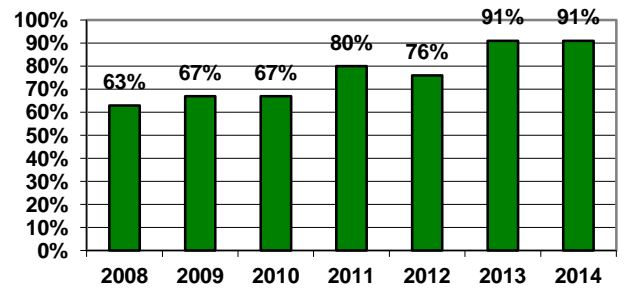
Abercorn Park

East Neighbourhood

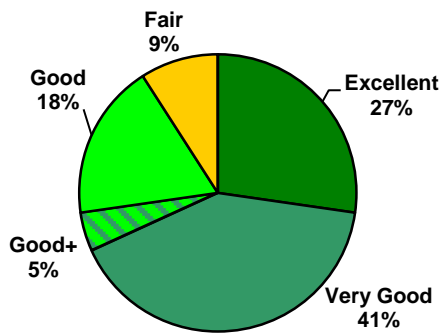
Average PQS



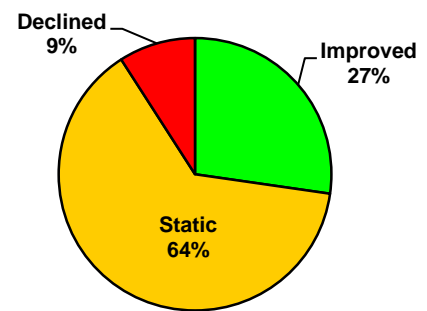
% of sites meeting Edinburgh Minimum Standard



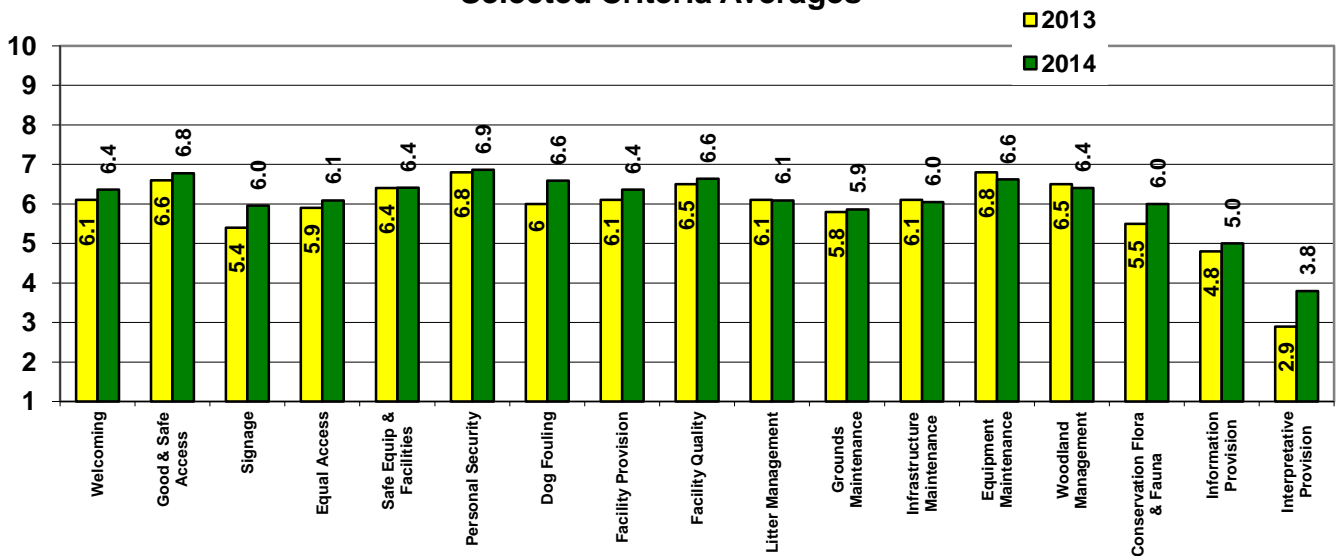
Bandwidths



Short Term Trend



Selected Criteria Averages



4.3 North Neighbourhood

Site Name	Classification	2011	2012	2013	2014	Trend	Std Met
East Pilton Park	Community Park	Good	V. Good	V. Good	V. Good	→←	Yes
Easter Drylaw Park	Community Park	V. Good	V. Good	V. Good	V. Good	→←	Yes
Granton Crescent Park	Community Park	Fair	V. Good	V. Good	V. Good	→←	Yes
Gypsy Brae	City Park	V. Good	V. Good	V. Good	Good	↓	Yes
Inverleith Park	Premier Park	Good	Good	Good+	Good	↓	No
KGV Park (Eyre Place)	City Park	Excellent	V. Good	V. Good	V. Good	→←	Yes
Muirhouse Park	Community Park	Good	V. Good	V. Good	Good	↓	Yes
Orchard Brae Park	Community Park	Good	Good	V. Good	V. Good	→←	Yes
Ravelston Park	Community Park	Excellent	Excellent	Excellent	Excellent	→←	Yes
Ravelston Woods	Natural Park			V. Good	V. Good	→←	Yes
Rocheid Path	Natural Park	Good+	Good+	Good+	V. Good	↑	Yes
Silverknowes Park	Recreation Ground	Good	Good	Good	V. Good	↑	Yes
Starbank Park	Community Park	V. Good	V. Good	V. Good	V. Good	→←	Yes
Victoria Park	City Park	V. Good	Excellent	Excellent	V. Good	↓	Yes
West Pilton Park	Community Park	Good	Good	V. Good	Good	↓	Yes

 = Green Flag Award Site



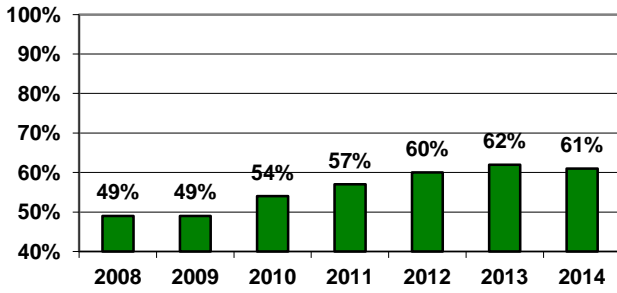
Victoria Park



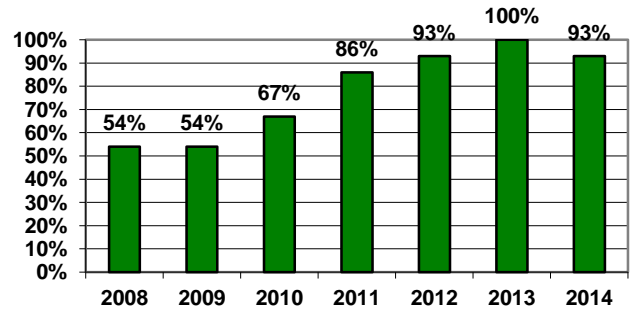
King George V Park, Eyre Place

North Neighbourhood

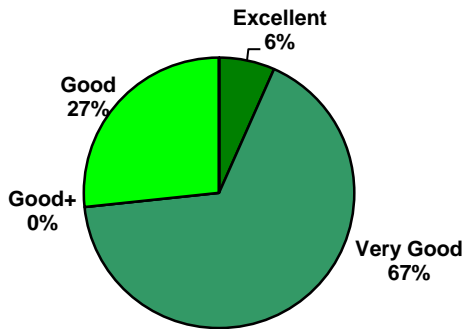
Average PQS



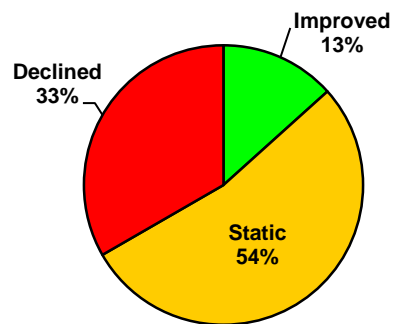
% of sites meeting Edinburgh Minimum Standard



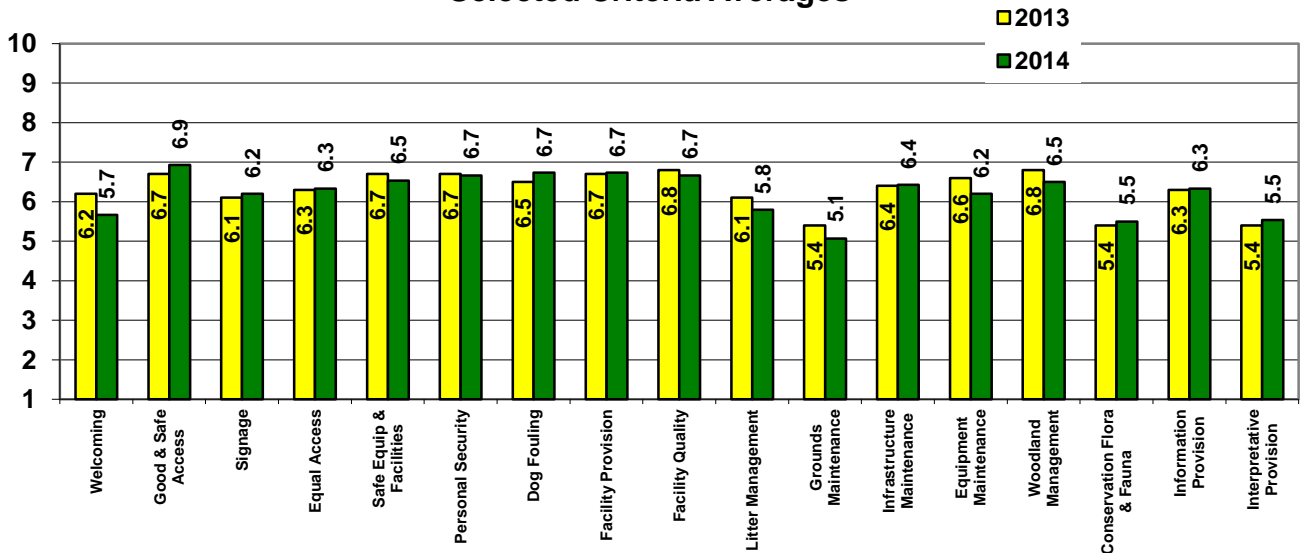
Bandwidths



Short Term Trend



Selected Criteria Averages



4.4 South Neighbourhood

Site Name	Classification	2011	2012	2013	2014	Trend	Std Met
Bauk's View	Natural Park	Good	V. Good	V. Good	V. Good	→←	Yes
Braid Hills	Natural Park	Fair	Good	Good	Good+	↑	Yes
Braidburn Valley Park	Community Park	Excellent	V. Good	Excellent	Excellent	→←	Yes
B'diehouse Burn Valley	Natural Park	Good+	Good+	Good	Good+	↑	Yes
Deaconess Garden	Garden	Good	V. Good	V. Good	V. Good	→←	Yes
Drum Park	Community Park	V. Good	Good	V. Good	V. Good	→←	Yes
Ferniehill Community Pk	Community Park	V. Good	V. Good	Excellent	Excellent	→←	Yes
Fernieside Rec Ground	Recreation ground	V. Good	Good	V. Good	V. Good	→←	Yes
Gracemount Comm Park	Community Park	Good	Good	Good	Good	→←	Yes
H'tage Braid & B'ford	Natural Park	V. Good	V. Good	Excellent	Excellent	→←	Yes
Inch Park	City Park	V. Good	V. Good	V. Good	V. Good	→←	Yes
Liberton Park	Community Park	V. Good	Good	V. Good	V. Good	→←	Yes
Moredun Park	Community Park	Good	Good	Good	Good	→←	Yes
Morgan Playing Fields	Recreation ground	V. Good	Excellent	Excellent	Excellent	→←	Yes
Morningside Park	Community Park	Excellent	Excellent	Excellent	Excellent	→←	Yes
Mortonhall Comm Park	Community Park	Fair	Good	Good	V. Good	↑	Yes
Nicholson Square	Garden	V. Good	V. Good	V. Good	V. Good	→←	Yes
Prestonfield Park	Community Park	Excellent	Excellent	Excellent	Excellent	→←	Yes
Prestonfield War Memorial	Garden	V. Good	Excellent	Excellent	Excellent	→←	Yes
Seven Acre Park	Community Park	V. Good	Excellent	Excellent	Excellent	→←	Yes
St Katharine's Park	Community Park	V. Good	V. Good	Excellent	Excellent	→←	Yes
St Patrick's Square	Garden	Good	Good	Good	Good	→←	Yes
The Meadows & B'Field	Premier Park	Good+	Good+	Good+	Good+	→←	Yes

█ = Green Flag Award Site



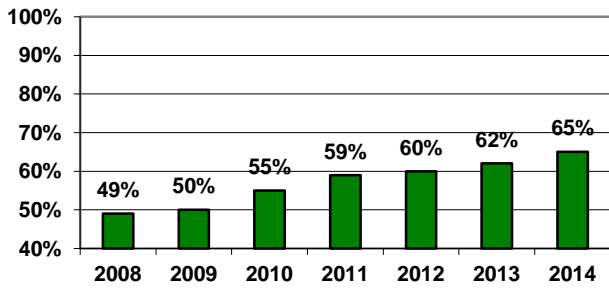
Bruntsfield Links



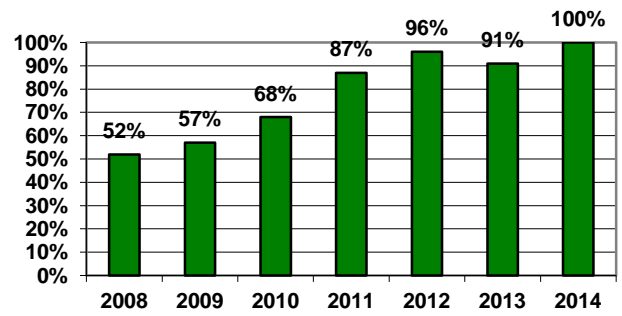
Braidburn Valley Park

South Neighbourhood

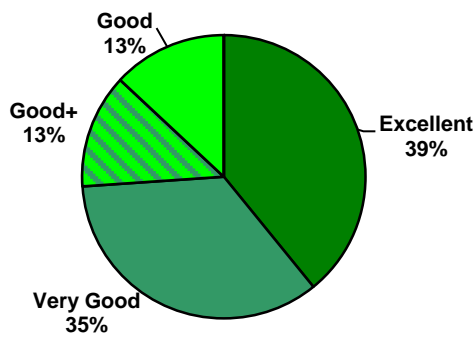
Average PQS



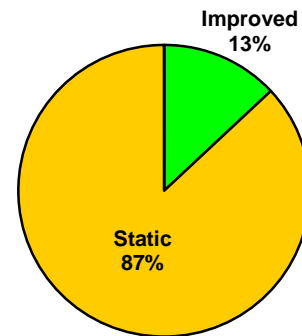
% of sites meeting Edinburgh Minimum Standard



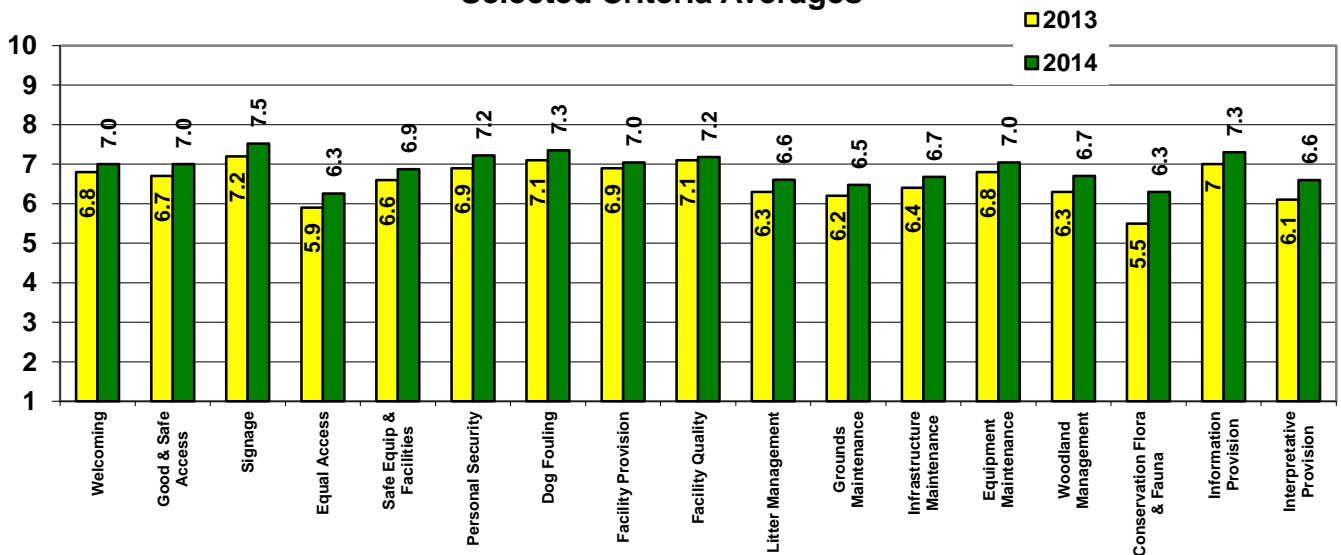
Bandwidths



Short Term Trend



Selected Criteria Averages



4.5 South West Neighbourhood

Site Name	Classification	2011	2012	2013	2014	Trend	Std Met
Blinkbonny Park	Community Park	Good	Good	V. Good	V. Good	→←	Yes
Bloomiehall Park	Community Park	V. Good	Excellent	Excellent	Excellent	→←	Yes
Campbell Park	Community Park	Good	Good	Good	Good	→←	Yes
Colinton Dell	Natural Park	Good	Good+	V. Good	V. Good	→←	Yes
Colinton Mains Park	City Park	Good	V. Good	V. Good	V. Good	→←	Yes
Dovecot Park	Community Park	Good	Good	Good	Good	→←	Yes
Easter Craiglockhart Hill	Natural Park	Excellent	Excellent	V. Good	Excellent	↑	Yes
Fairmilehead Park	Community Park	Good	V. Good	V. Good	V. Good	→←	Yes
Gardener's Crescent	Garden	Good	Good	Good	Good	→←	Yes
Gorgie/Dalry Com Park	Community Park	Good	Good	Good	Good	→←	Yes
Hailes Quarry Park	Community Park	V. Good	V. Good	Excellent	Excellent	→←	Yes
Harrison Park	Community Park	Excellent	Excellent	Excellent	Excellent	→←	Yes
KGV Park, Currie	Community Park	V. Good	V. Good	V. Good	V. Good	→←	Yes
Malleny Park	Recreation ground	Good	Good	Good	Good	→←	Yes
Marchbank Park	Community Park	Good	Good	V. Good	V. Good	→←	Yes
Meadowspot Park	Community Park	Good	Good	Good	Good	→←	Yes
Muirwood Road Park	Community Park	Excellent	Excellent	Excellent	Excellent	→←	Yes
Murieston Park	Community Park	V. Good	V. Good	V. Good	V. Good	→←	Yes
Paties Road Rec. Ground	City Park	Good	Good	Good	Good	→←	Yes
Pentland Regional Park	Regional park	Excellent	Excellent	Excellent	Excellent	→←	Yes
Pentland View Park	Community Park	V. Good	V. Good	V. Good	Good	↓	Yes
Ratho Park	Community Park	V. Good	V. Good	V. Good	V. Good	→←	Yes
Redford Wood	Natural Park	Poor	Poor	Fair	Fair	→←	No
Redhall Park	Community Park	Fair	Good	Good	Good	→←	Yes
Saughton Park	Premier Park	Fair	Fair	Fair	Fair	→←	No
Sighthill Park	Community Park	Good	Good	Good	V. Good	↑	Yes
Spylaw Park	Community Park	Good	Good	V. Good	V. Good	→←	Yes
Stenhouse Place East Park	Community Park	Fair	V. Good	Good	Fair	↓	No
Whinhill Park	Community Park	Good	Good	Good	Good	→←	Yes
White Park	Community Park	V. Good	Good	V. Good	V. Good	→←	Yes

 = Green Flag Award Site



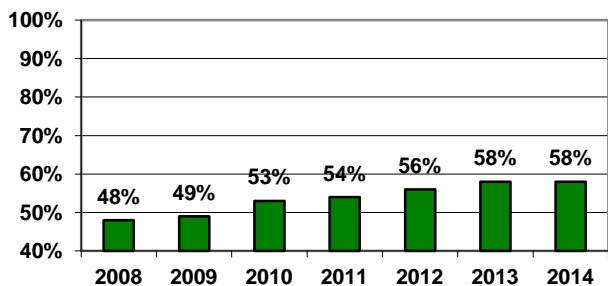
Colinton Mains Park



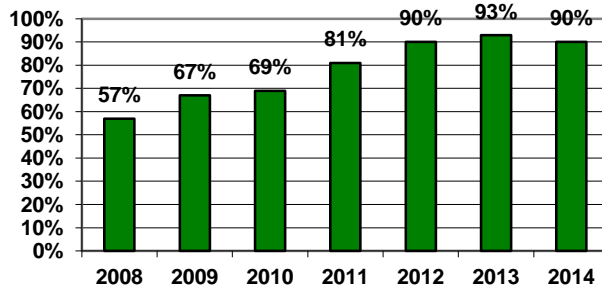
Saughton Park

South West Neighbourhood

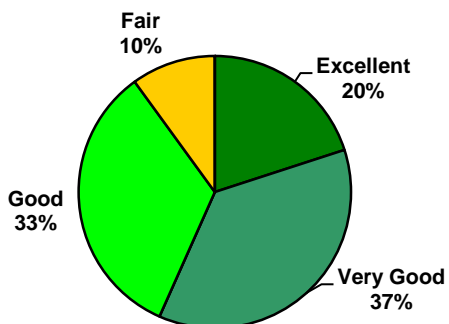
Average PQS



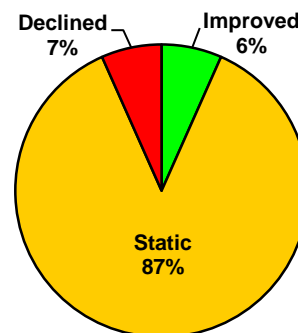
% of sites meeting Edinburgh Minimum Standard



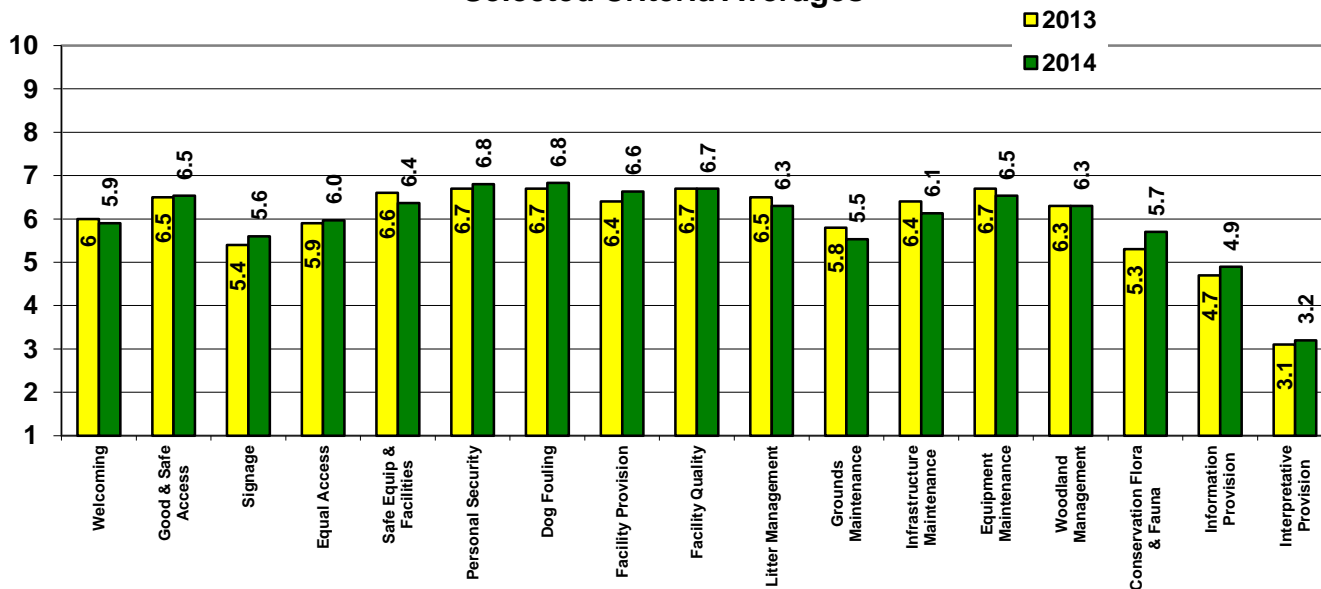
Bandwidths



Short Term Trend



Selected Criteria Averages



4.6 West Neighbourhood

Site Name	Classification	2011	2012	2013	2014	Trend	Std Met
Allison Park, Kirkliston	Community Park	Good	Good	V. Good	V. Good	↔	Yes
Balgreen Park	Community Park	Fair	Good	Good	V. Good	↑	Yes
Cammo Estate	Natural Park	V. Good	V. Good	V. Good	V. Good	↔	Yes
Clermiston Park	Community Park	Good	Good	Good	V. Good	↑	Yes
Corstorphine Hill	Natural Park	V. Good	V. Good	Excellent	V. Good	↓	Yes
Cramond Foreshore	Natural Park	Good+	V. Good	V. Good	V. Good	↔	Yes
Cramond Walled Garden	Garden	V. Good	Good	Good	Good	↔	Yes
Davidsons Mains Park	City Park	Good	V. Good	V. Good	V. Good	↔	Yes
Drumbrae Park	Community Park	Good	Good	Good	V. Good	↑	Yes
Dundas Park, SQ	Community Park	Good	Good	Good	Good	↔	Yes
Fauldburn Park	Community Park	Good	V. Good	V. Good	V. Good	↔	Yes
Ferry Glen & Back Braes	Natural Park	Good+	V. Good	Good+	Good	↓	No
Glendevon Park	Community Park	Good	Good	V. Good	V. Good	↔	Yes
Gyle Park	City Park	Good	V. Good	V. Good	V. Good	↔	Yes
Haugh Park	Community Park	Excellent	Excellent	Excellent	V. Good	↓	Yes
Inchcolm Park, SQ	Community Park	Good	Good	V. Good	V. Good	↔	Yes
KGV Park, SQ	Community Park	Good	Good	V. Good	Good	↓	Yes
Lauriston Castle	Garden	V. Good	V. Good	V. Good	Good	↓	Yes
Parkside, Newbridge	Community Park	Good	Good	Good	V. Good	↑	Yes
Pike's Pool	Natural Park			Fair	Poor	↓	No
Ratho Station Park	Community Park	Good	Good	Good	Good	↔	Yes
Ratho Station Rec Ground	Recreation ground	Fair	Good	Good	Good	↔	Yes
River Almond Walkway	Natural Park	Good+	Good+	Good+	Good+	↔	Yes
Riverside Park	Community Park	Good	Good	Good	V. Good	↑	Yes
Roseburn Park	City Park	Good	V. Good	V. Good	V. Good	↔	Yes
St Margaret's Park	Community Park	V. Good	Excellent	Excellent	Excellent	↔	Yes
Station Road Pk, SQ	Community Park	Excellent	Excellent	V. Good	Excellent	↑	Yes
Union Park	City Park	Fair	Good	Good	Good	↔	Yes

█ = Green Flag Award Site



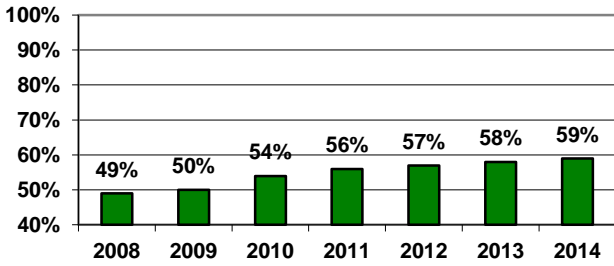
St Margaret's Park



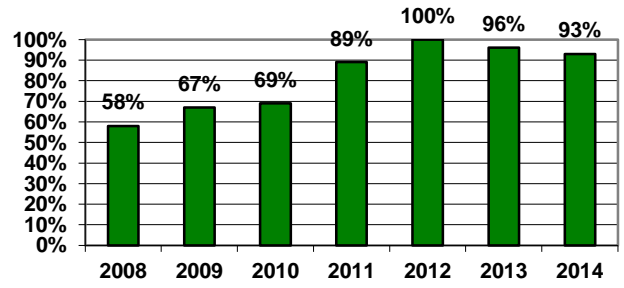
Station Road Park

West Neighbourhood

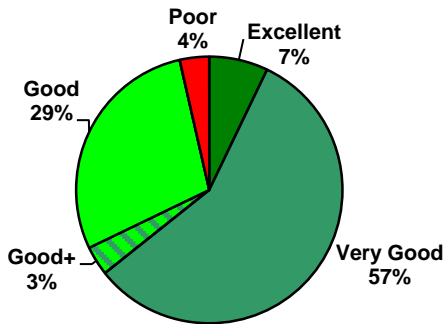
Average PQS



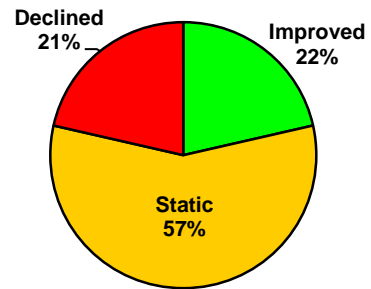
% of sites meeting Edinburgh Minimum Standard



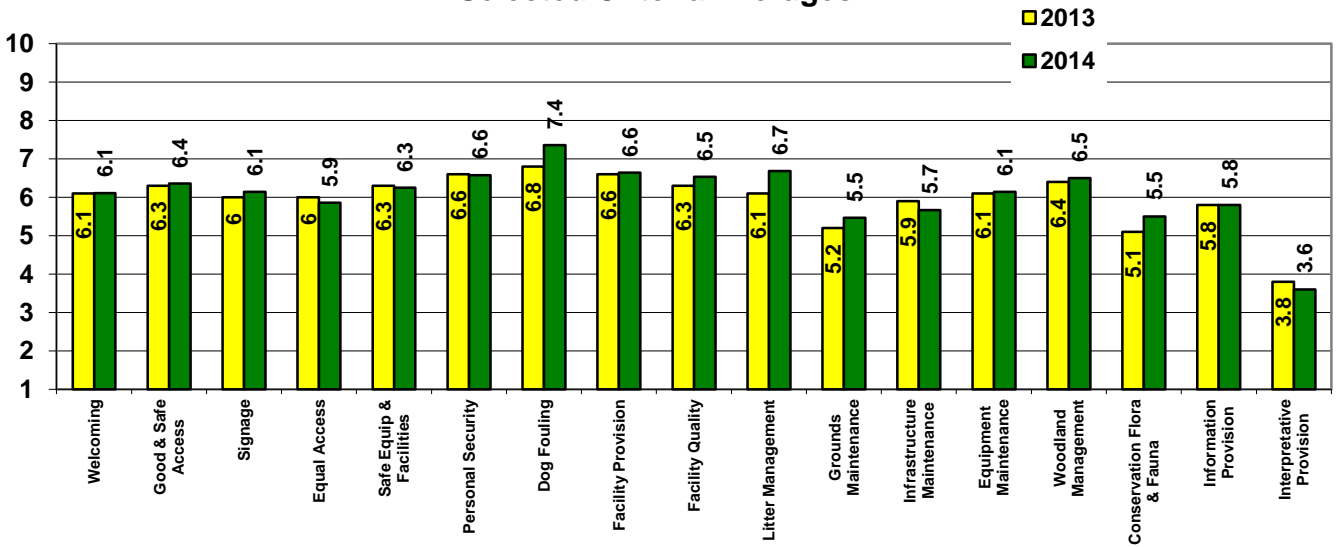
Bandwidths



Short Term Trend



Selected Criteria Averages

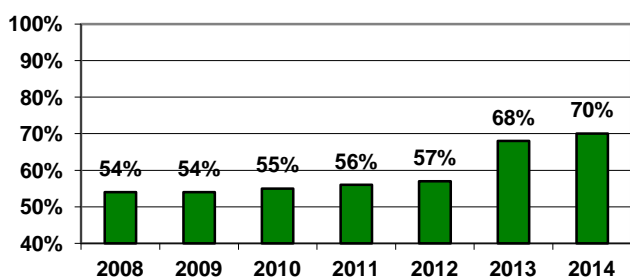


4.7 Natural Heritage Sites

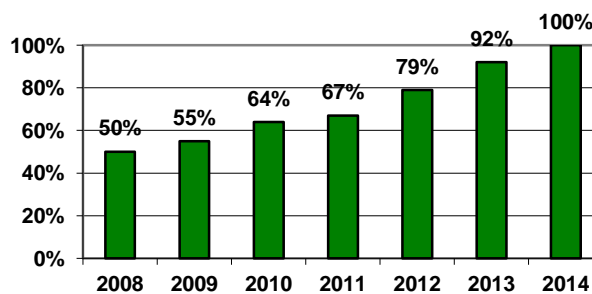
Site Name	Neighbourhood	2011	2012	2013	2014	Trend	Std Met
B'house Burn Valley	South	Good +	Good +	Good	Good+	↑	Yes
Cammo Estate	West	V. Good	V. Good	V. Good	V. Good	↔	Yes
Colinton Dell	South West	Good	Good +	V. Good	V. Good	↔	Yes
Corstorphine Hill	West	V. Good	V. Good	Excellent	V. Good	↓	Yes
Craigmillar Castle	East	V. Good	V. Good	V. Good	V. Good	↔	Yes
Cramond Foreshore	West	Good +	V. Good	V. Good	V. Good	↔	Yes
Easter Craiglockhart Hill	South West	Excellent	Excellent	V. Good	Excellent	↑	Yes
Hermitage & Blackford	South	V. Good	V. Good	Excellent	Excellent	↔	Yes
Meadows Yard	East	Good	Good	Good+	V. Good	↑	Yes
Pentland Hills Regional	South West	Excellent	Excellent	Excellent	Excellent	↔	Yes
Ravelston Woods	North			V. Good	V. Good	↔	Yes
River Almond Walkway	West	Good +	Good +	Good+	Good+	↔	Yes

■ = Green Flag Award Site

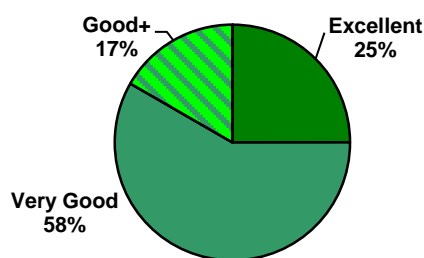
Average PQS



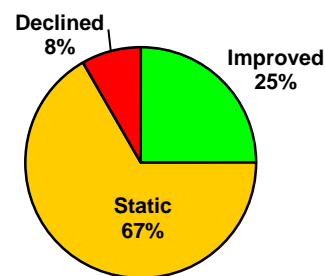
% of sites meeting Edinburgh Minimum Standard



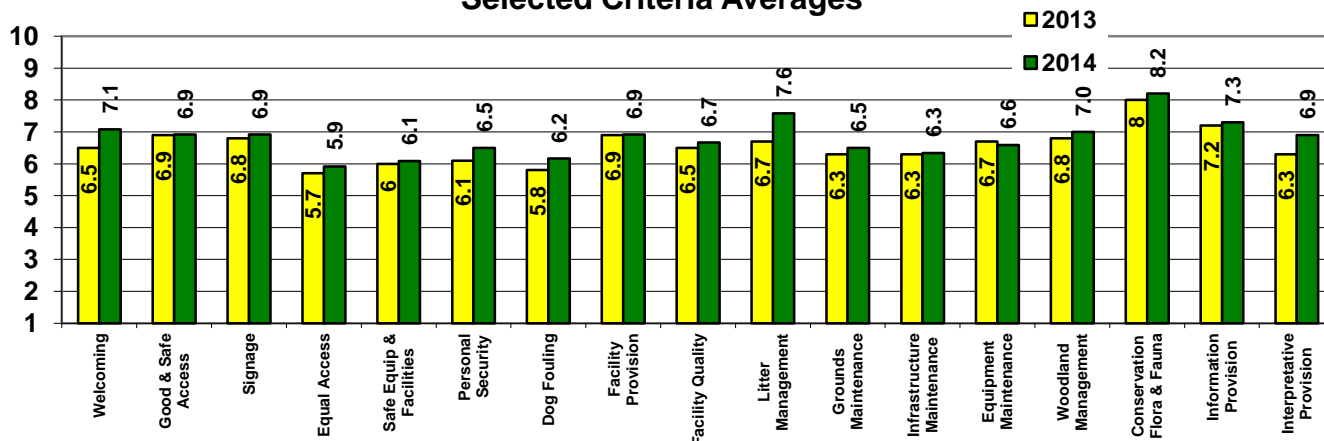
Bandwidths



Short Term Trend



Selected Criteria Averages



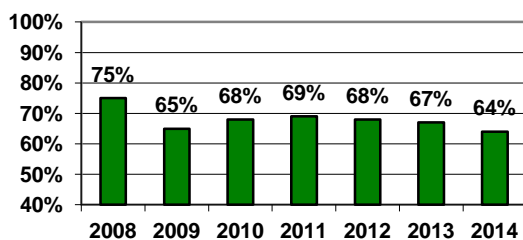
4.8 Botanical & Specialist Sites

Site Name	Neighbourhood	2011	2012	2013	2014	Trend	Std Met
Lauriston Castle	West	V. Good	V. Good	V. Good	Good	↓	Yes
Princes Street Gardens	CC&L	Good +	Good +	Good +	Good+	↔	Yes
Saughton Park	South West	Fair	Fair	Fair	Fair	↔	No
Abercorn Park	East	V. Good	V. Good	Excellent	Excellent	↔	Yes
Brighton Park	East	V. Good	V. Good	V. Good	V. Good	↔	Yes
Ferniehill Com. Park	South	V. Good	V. Good	Excellent	Excellent	↔	Yes
Harrison Park	South West	Excellent	Excellent	Excellent	Excellent	↔	Yes
Rosefield park	East	V. Good	V. Good	Excellent	Excellent	↔	Yes
Spylaw Park	South West	Good	Good	V. Good	V. Good	↔	Yes
St Margaret's Park	West	V. Good	Excellent	Excellent	Excellent	↔	Yes
Station Road Park	West	Excellent	Excellent	V. Good	Excellent	↑	Yes
Victoria Park	North	V. Good	Excellent	Excellent	V. Good	↓	Yes

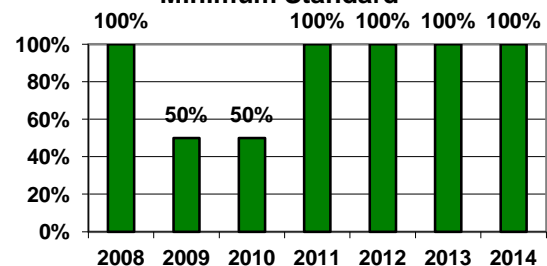
█ = Green Flag Award Site

Data below based on Lauriston Castle & Princes Street Gardens only.

Average PQS

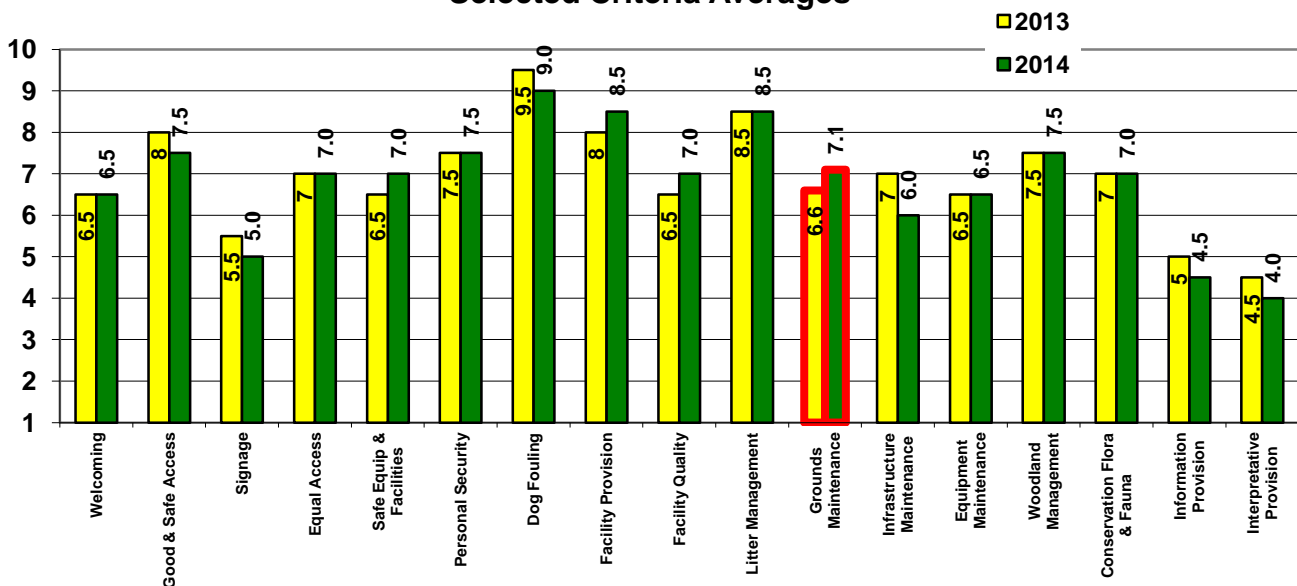


% of sites meeting Edinburgh Minimum Standard



Data below based on Lauriston Castle & Princes Street Gardens only except Grounds Maintenance which is based on all sites.

Selected Criteria Averages



5 Citywide Results

5.1 Listed below are the top and bottom ranked sites sorted by PQA score in 2013. The difference against the previous year's score and rank are included for information.

Tables with yellow field name indicate sort field.

■ = Green Flag Award Site

Top ranked sites

City Rank	Site Name	Classification	N'hood	PQA 2013	PQA 2014	+ / - %	+ / - Rank
1	HOB inc Blackford Hill	Natural Park	South	76%	78%	+2%	+1
2	Easter Craiglockhart Hill	Natural Park	South West	74%	76%	+2%	+2
3	Pentland Hills	Natural Park	South West	77%	75%	-2%	-2
4	Corstorphine Hill	Natural Park	West	75%	74%	-1%	-1
5=	Harrison Park	Community Park	South West	72%	73%	+1%	+1
5=	Ravelston Park	Community Park	North	72%	73%	+1%	+1
7=	Figgate Burn Park	Community Park	East	74%	72%	-2%	-3
7=	Morningside Park	Community Park	South	71%	72%	+1%	+2
7=	Hopetoun Crescent	Garden	CC & Leith	70%	72%	+2%	+3
7=	Portobello Comm. Garden	Community Park	East	70%	72%	+2%	+3
7=	Ravelston Woods	Natural Park	North	67%	72%	+5%	+15
7=	Dunbars Close Garden	Garden	CC & Leith	63%	72%	+9%	+35

Bottom ranked sites

City Rank	Site Name	Classification	N'hood	PQA 2013	PQA 2014	+ / - %	+ / - Rank
125=	Seafield Rec Ground	Rec. Ground	East	52%	48%	-4%	-21
125=	Meadowspot Park	Community Park	South West	51%	48%	-3%	-13
125=	Hunters Hall Park (JKC)	City Park	East	49%	48%	-1%	-1
125=	Henderson Gardens Park	Community Park	CC & Leith	45%	48%	+3%	+5
125=	Ratho Station Rec Ground	Rec. Ground	West	44%	48%	+4%	+9
130	Malleny Park	Rec. Ground	South West	45%	47%	+2%	0
131	Cairntows Park	Community Park	East	54%	46%	-8%	-35
132	Gorgie/Dalry Park	Community Park	South West	46%	45%	-1%	-3
133	Keddie Park	Community Park	CC & Leith	42%	44%	+2%	+2
134=	Stenhouse Place East Park	Community Park	South West	51%	43%	-8%	-22
134=	Hays Park	Community Park	East	48%	43%	-5%	-8
136	Pikes Pool	Natural Park	West	45%	42%	-3%	-6
137	Bellevue Crescent Gardens	Garden	CC & Leith	42%	40%	-2%	-2

5.2 Listed below are sites that have improved and deteriorated the most based on the difference in PQA score between 2012 and 2013.

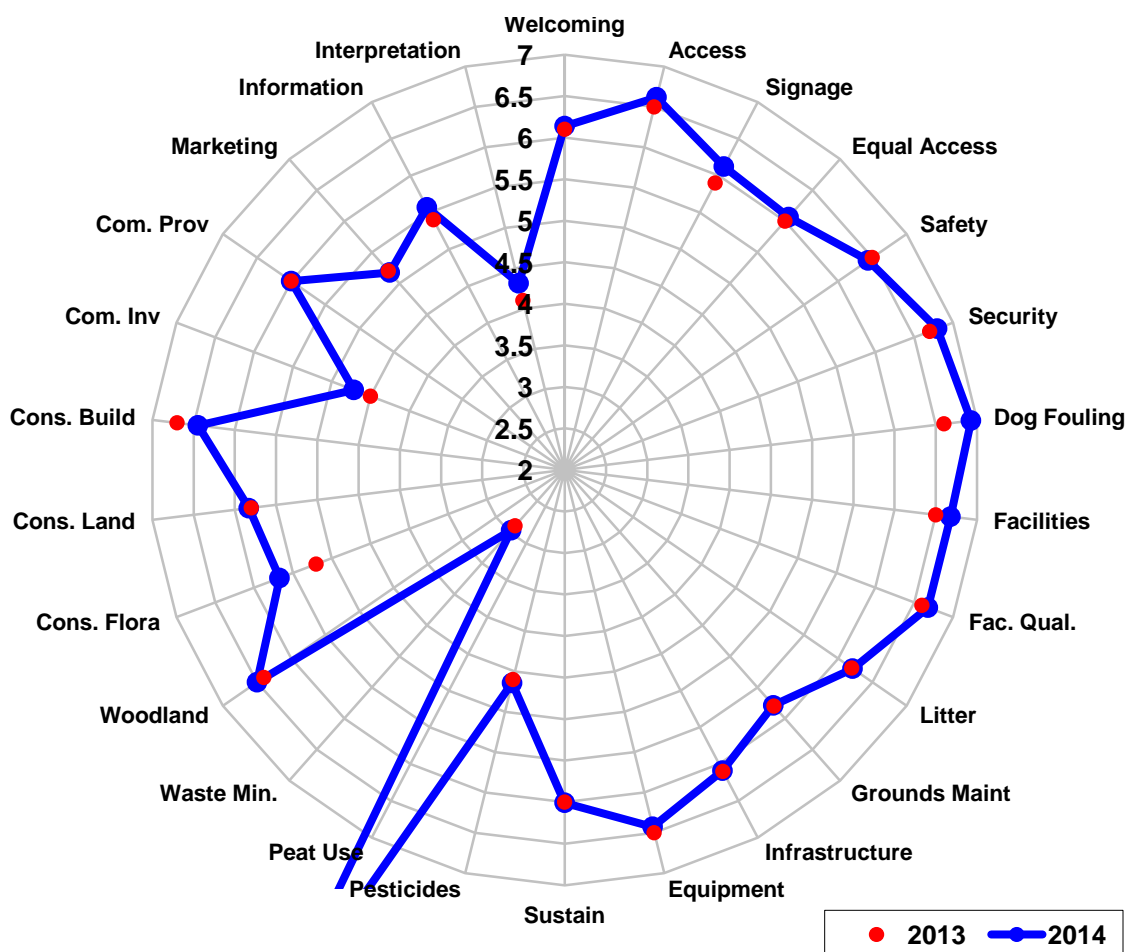
Most Improved

Rank	Site Name	Classification	N'hood	PQA 2013	PQA 2014	+ / - %	+ / - Rank
1	Baronscourt Park	Community Park	East	38%	50%	+12%	+18
2=	Dunbars Close Garden	Garden	CC & Leith	63%	72%	+9%	+35
2=	Liberton Park	Community Park	South	55%	64%	+9%	+45
4=	Starbank Park	Community Park	North	55%	63%	+8%	+41
4=	Nicholson Square	Garden	South	60%	68%	+8%	+35

Most Deteriorated

Rank	Site Name	Classification	N'hood	PQA 2013	PQA 2014	+ / - %	+ / - Rank
1=	Cairntows Park	Community Park	East	54%	46%	-8%	-35
1=	Stenhouse Place East Park	Community Park	South West	51%	43%	-8%	-22
1=	Haugh Park	Community Park	West	68%	60%	-8%	-42
4	East Pilton Park	Community Park	North	62%	55%	-7%	-49
5	Gypsy Brae Rec Ground	City Park	North	62%	56%	-6%	-40

5.3 Criteria Averages Citywide



5.4 Results Summary

Bandwidths

In 2013, 58% of Edinburgh's parks were judged as 'Excellent' or 'Very Good' and this figure rose to 64% in 2014. The results also showed that 22 parks moved up in bandwidth in 2014, whilst 18 dropped including one park that slipped into the 'Poor' category. The East and West Neighbourhoods each had 6 parks increasing but also experienced sites dropping along with all other Neighbourhoods except South who had 20 sites retaining the same quality as last year and improved on three sites.

Park Quality Scores

Although bandwidths reflect a more accurate description of a parks quality, by taking into account the natural and accepted variance of judges scoring and that certain aspects of parks can change on a day to day basis, it can be interesting to explore a little deeper into the Park Quality Scores. It is noted that over half (72) of Edinburgh's parks improved on last year's score whilst a third deteriorated.

With a score of 60%, the citywide average parks quality score continues to year on year and parks are now judged to have improved 11% since 2008. The South and North Neighbourhoods have improved the most in this period with 15% and 14% respectively but it was noted that the latter was the only area to record a reduction this year albeit only by 1%. The South West Neighbourhood remained static whilst all other areas improved by 1% except the South Neighbourhood which showed an increase of 3%.

Edinburgh Minimum Standard

Following last year's results, the 2014 target for sites meeting the Edinburgh Minimum Standard was set at 91%, an increase of 1% on last year's target and was agreed, following discussion, to reflect the desire to continue improving the quality of our parks whilst recognising that challenges lay ahead.

Four areas experienced one park each slipping back below the minimum standard resulting in a reduction to their overall percentages. However, all continue to meet the target except for City Centre & Leith and South West Neighbourhoods with the latter missing out by only 1%. The East Neighbourhood remained static whilst the South Neighbourhood along with the Natural Heritage Service improved the quality of the remaining two sites that did not meet the standard previously and who now have all the parks in the area above the minimum standard.

Criteria Score Averages

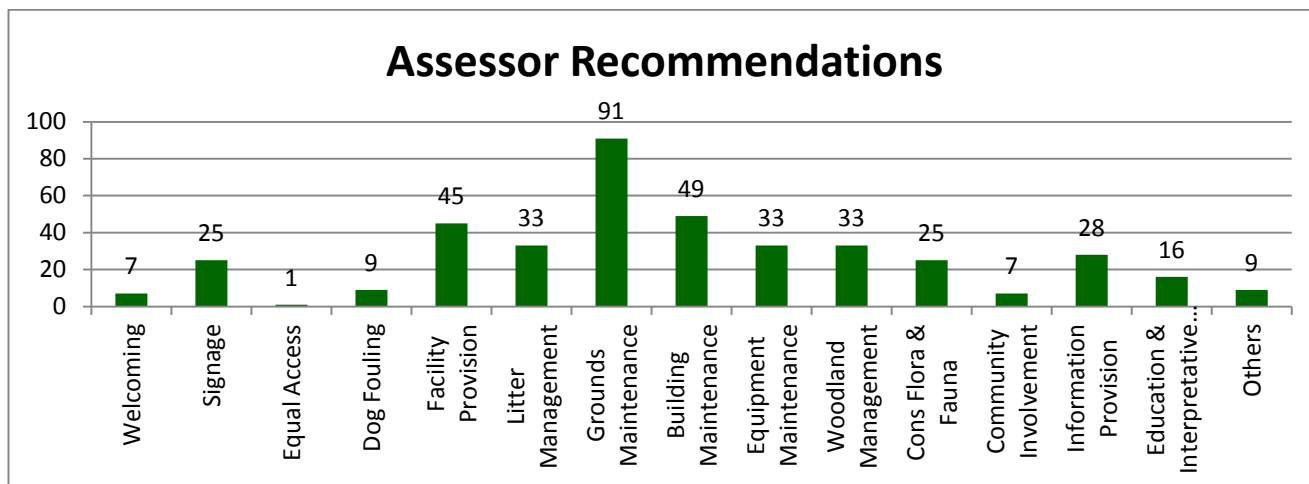
Citywide, thirteen average criteria scores improved with 'Conservation of Flora & Fauna' and 'Dog Fouling' showing the largest increases. In Neighbourhoods, the South recorded increases in 19 out of the 26 criteria with the East Neighbourhood not far behind with 15 and with notable increases in 'Welcoming' and 'Signage'. The West Neighbourhood saw good increases in 'Dog Fouling' and 'Litter Management'.

5.5 Site Recommendations

Following the assessments judges were asked to propose three recommendations for each site based on their findings. These recommendations are designed to ensure that structured improvements are undertaken in every park, which will hopefully improve the targeted criteria score and therefore the quality across the whole site. It also provides a broad level indication where improvements will be targeted based on the Green Flag criteria which will enable possible strategic citywide assistance in some cases. In total, the PQA process should ensure that 411 improvement actions are being implemented across the city each year.

Although the assessor’s recommendations are listed in this document, site managers have the option to amend or replace them with their own improvement actions but this is proposed to be completed by 31st December. After this date the recommendations become ‘agreed’ and as part of next year’s assessments, judges will be asked to look for evidence that they have been met, part met or not met.

The graph on the next page shows the number of initial recommendations aligned with Green Flag criteria that if ‘agreed’ should be implemented by April 2015. Some improvements can affect more than one Green Flag criteria score (welcoming and maintenance for example) but only the main one is recorded.



5.6 Park Improvement & Management Plans

Improvement actions can be identified for parks through various sources i.e. user surveys etc but the Park Quality Assessments carried out each year provides the site manager with specific information on the quality of their parks that can be used to identify areas for improvement or promotion. There is also information available following the publication of the PQA report that allows managers to identify targeted improvements across areas or the City i.e. dog fouling campaigns.

It is hoped that managers use all the available information and especially the agreed recommendations to create an annual Park Improvement Plan that can be recorded and updated to evidence improvement. This is especially important where the site is a current Green Flag Award park and the improvement plan forms part of the management plan.

A number of park management plans are due for update this year and discussions are already taking place with regards to the format of the current plans. It is proposed to create ‘corporate’ parks management plans that provide details of the various policies and strategies which will allow for a one off update when these strategies change. Site management plans can provide the site specific details and link to the ‘corporate’ plan when developing actions etc.

6 Green Flag Awards

Green Flag Awards are a way of recognising sites of quality. The awards are provided on an annual basis and each site must re-submit their application each year to retain the award. The scheme also involves a Green Flag Community Award (formerly Green Pennant) which is to reward sites that are managed by the community.

In 2007, the scheme was trialled in Scotland with Edinburgh taking part along with Dundee. In that year Edinburgh was successful in achieving two Green Flags (Braidburn Valley Park and Harrison Park). The total rose to 3 in 2008, and 5 in 2009, that year also saw the first Green Pennant in Scotland awarded to Corstorphine Walled Garden. In 2010, Edinburgh was awarded a further Eight Green Flags bringing the total to 13 plus Corstorphine Walled Garden retained their Community Award.

In 2011 Edinburgh was included in the pilot of the Green Flag Group Award Scheme and as a result existing Green Flag Award winning sites are automatically awarded Green Flags if the standard was maintained following self assessment. In addition to this a further 7 new sites were successful in 2011 and a further 4 in 2012 resulting in Edinburgh having 24 Green Flag Awards and one Green Flag Community Award.

To date, no park in Edinburgh has failed to achieve a green flag if previously successful and below is a list of the successful sites and the year first awarded.

In 2014, Edinburgh added two new sites (King George V Park (Eyre Place) and Spylaw Park) bringing the total Green Flag Award winning parks in Edinburgh up to 26 plus one Green Flag Community Award.

6.1 Green Flag Group Award

In 2011, Edinburgh was invited to take part in the pilot of the Green Flag Group Award that saw two peer judges assess the strategy the authority has to managing its greenspaces. The judges paid particular attention on how Green Flag has been adopted into the various strategies, through self assessing its entire stock using the Green Flag criteria and how it uses the information to improve, not only the Green Flag Award winning sites but all sites across the authority.

Following the self assessments, Green Flag Award winning sites in 2013 can be awarded a Green Flag Award for 2014 by the authority themselves if the standard is still maintained. However, these sites will be subject to one or more mystery shopper assessments at any time during the next twelve months which will see an external Green Flag judge arriving at the park unannounced and assessing the site based on a visitor experience.

As part of the PQA assessments, judges are asked to report any major issues found whilst undertaking assessments to the site manager. For Green Flag Award parks, this reporting is extended when judges encounter any issues that fall below expected Green Flag quality. This approach ensures managers are aware of issues affecting Green Flag parks and acts as a early warning for sites that are subject to mystery shop assessments as part of the Green Flag scheme.

New sites identified for the award will continue to be assessed using the existing judging method of two judges assessing the management plan and undertaking a formal site visit.

6.2 Green Flag Award Site List & Map

Green Flag Award Park	N'hood	Year first achieved
Braidburn Valley Park	South	2007
Harrison Park	South West	2007
Pentland Hills Regional Park	South West	2008
Easter Craiglockhart Hill	South West	2009
Hopetoun Crescent Gardens	CC&L	2009
Burdiehouse Burn Valley Park	South	2010
Corstorphine Hill	West	2010
Craigmillar Castle Park	East	2010
Figgate Burn Park	East	2010
Inverleith Park	North	2010
London Road Gardens	CC&L	2010
Portobello Community Park	East	2010
Station Road Park	West	2010
Hailes Quarry Park	South West	2011
Hermitage of Braid & Blackford Hill	South	2011
Morningside Park	South	2011
Muir Wood Road Park	South West	2011
Princes Street Gardens	CC&L	2011
St Margarets Park	West	2011
Victoria Park	North	2011
Back Braes & Ferry Glen	West	2012
Lochend Park	East	2012
Prestonfield Park	South	2012
Ravelston Park & Woods	North	2012
King George V Park – Eyre Place	North	2014
Spylaw Park	South West	2014
Green Flag Community Award (formerly Green Pennant Award)		
Corstorphine Walled Garden	West	2009



Spylaw Park

GREEN FLAG AWARD PARKS 2014

