

Park Quality Assessments 2017



Contents

1	Introduction	Pg 3
2	Methodology	4
2.1	Green Flag	4
2.2	Criteria Used	4
2.3	Scoring of Criteria	5
2.4	Park Quality Score	5
2.5	Variance	5
2.6	Bandwidth Scoring	5
2.7	Localities	6
2.8	Sites	6
2.9	Assessors	7
3	Performance Results	8
3.1	Bandwidth Summary	8
3.2	Trend Summary	8
3.3	Park Quality Score Averages	9
3.4	Edinburgh Minimum Standard	10
4	Area Results	12
4.1	North East Edinburgh	13
4.2	North West Edinburgh	17
4.3	South East Edinburgh	22
4.4	South West Edinburgh	26
4.5	Natural Heritage Service	30
4.6	Green Flag Award Parks	32
5	Citywide Results	34
5.1	Parks Listed In Quality Order	34
5.2	Most Improved/Deteriorated Parks	37
5.3	Summary of Results	38
5.4	Results Maps	39
5.5	Criteria Scoring Statistics	42
5.6	Summary of Criteria Scoring	42
5.7	Site Improvements / Recommendations	43
5.8	Park Improvement / Management Plans	44
5.9	Green Flag Forum - Items to Consider	44
6	Green Flag Awards	45
6.1	Green Flag Group Award	45
6.2	Green Flag Award List	46
6.3	Green Flag Award Map	47

All photographs used in this document have been reproduced from City of Edinburgh Council stock photography or Edinburgh Outdoors website.

(Front Cover: Cammo Estate). Park names used throughout this document may have been abbreviated where space is limited



1 Introduction

Edinburgh values its reputation as one of the most beautiful cities in Europe, renowned for its setting, history and built heritage. Parks and greenspaces are integral to this. They serve as a stage for our public lives and are settings where celebrations are held, where social exchanges take place, where friends mix, where cultures run into each other, where nature thrives, and where people revive themselves from the stresses of urban living.

The Parks, Greenspace & Cemeteries Service is committed to providing quality parks for residents and visitors alike. There are five qualities that make a park great, and that drive the work of the Parks, Greenspace & Cemeteries Service: They must be full of activity and invite affection. They must also be visible and accessible as well as being comfortable and safe. They also need to be places you can count on, no matter if you visit the park every day or once a year.

Using the Green Flag judging criteria all of Edinburgh's parks are assessed on an annual basis and a Parks Quality Score is produced for each site. These scores are compared to the Edinburgh Minimum Standard which has been developed to benchmark our parks and record how they are improving.

In Edinburgh the involvement of local residents through a network of Friends groups is well established. Depending on their capacity, sites host both major and local events and activities, offering a wide range of attractions to families and individuals from a diverse community.

The Parks, Greenspace & Cemeteries Service ensures that Edinburgh's parks and greenspaces are clean, safe, colourful and diverse; they will be the setting for activities and celebrations; be well-known for their features, history and "happenings"; and be locally valued and used.

To this end our vision is:

"A quality parks system worthy of international comparison; accessible, diverse and environmentally rich; which fulfils the cultural, social and recreational needs of the people".



Atholl Crescent Gardens

2 Methodology

2.1 Green Flag

The Green Flag Award is the national standard for parks and green spaces. The award scheme began in 1996 as a means of recognising and rewarding the best green spaces in the country. It was also seen as a way of encouraging others to achieve the same high environmental standards, creating a benchmark of excellence in recreational green areas.



2.2 Criteria used

Whilst the Green Flag Award contains both desk and field research, this project was limited to site based assessments carried out by Council officers, external partners and members of the community trained in assessing parks using Green Flag criteria. Thus the final 'Parks Quality Score' (PQS) should not be read as the site's score against the Green Flag Award but should be used for indicative purposes only.

Although some criteria are difficult to assess during a field visit, the Green Flag Forum evaluated certain criteria in a desktop exercise and provided guidance for allocating scores. Site managers are asked to score the 'desktop' criteria on an annual basis.

Listed below are the criteria that were used in the quality assessments:

A Welcoming Park

- Welcoming
- Good and safe access
- Signage
- Equal access for all

Healthy, Safe and Secure

- Safe equipment facilities
- Personal security in park
- Dog fouling
- Appropriate provision of facilities
- Quality of facilities

Clean and Well Maintained

- Litter and waste management
- Grounds maintenance and horticulture
- Buildings and infrastructure maintenance
- Equipment maintenance

Sustainability

- Environmental sustainability energy and natural resource conservation, pollution (*Desktop Assessment*)
- Pesticides (*Desktop Assessment*)
- Peat use (*Desktop Assessment*)
- Waste minimisation (*Desktop Assessment*)
- Arboriculture and woodland management

Conservation and Heritage

- Conservation of natural features, wild fauna and flora
- Conservation of landscape features (*Desktop Assessment*)
- Conservation of buildings and structures

Community Involvement

- Appropriate provision for the community (*Desktop Assessment*)
- Community involvement in management and development including outreach work (*Desktop Assessment*)

Marketing

- Marketing and promotion (*Desktop Assessment*)
- Provision of appropriate information
- Provision of appropriate educational interpretation/information

Those not currently used are

Management

- Implementation of the management plan – (at present, all sites don't have a management plan plus this criterion would not be easily assessed during a field visit and would rely on conversations with site managers which would require a planned visit.)

2.3 Scoring of Criteria

Each individual criterion was scored out of 10. Criteria that did not apply to a particular site – e.g. 'conservation of buildings or structures' on a site where no buildings or structures are present – were scored as not applicable and were therefore not included in the total score or average calculations.

The Parks & Greenspace Forum agreed to use the scoring system below to assess their sites.

Score	0	1	2	3	4	5	6	7	8	9	10
Bandwidth	N/A	Very Poor	Low Poor	Mid Poor	High Poor	Low Fair	High Fair	Good	Very Good	Excellent	Exceptional

2.4 Park Quality Score

Park quality scores were obtained by adding together all the criteria scores and dividing the total by the number of applicable criteria resulting in an average score. This score is then multiplied by 100 to obtain a Park Quality Score (PQS). The maximum score available was therefore 100% for each site.

2.5 Variance

In an attempt to ensure that a consistent and accurate score for each site was achieved, assessment teams are led by an experienced officer who in most cases is also a formal Green Flag Award judge. There was also additional guidance included in the assessment documentation. Scores and comments from the previous year's assessment, along with improvements carried out over the last 12 months were also provided to assessors so as to provide a starting point, with improvements and deterioration in quality reflected in the scoring.

Each site was assessed once by a team of assessors.

2.6 Bandwidth Scoring

The system used in 2009 saw the introduction of bandwidths. This was to accommodate the natural variance of assessors both in terms of reliability and repeatability. The accepted variance of 10% meant that the forum opted for bandwidths instead of a % score. The forum went one step further and instead of simply creating a bandwidth for scores out of 100%, they looked at each type of park and allocated bandwidths based on the expected quality and appropriateness of each type of site.

In addition to the bandwidths it was agreed that there should be a minimum level of quality for each type of park and as a result the Edinburgh Minimum Standard was set at the 'Good' bandwidth for most park types. The exceptions were Premier Parks and Natural Parks where it was argued that the sites could be judged as good even though they did not meet the Minimum Standard score and it was agreed to introduce a 'Good+' bandwidth for these two classifications to show where the standard was met.

The table below shows the park classifications and bandwidths agreed.

Classification	Poor	Fair	Good	Edin Min Std	Good +	Very Good	Excellent
Premier Park	35% - 49%	50% - 64%	65% - 69%	70%	70% - 74%	75% - 84%	85% +
City Park	25% - 39%	40% - 49%	50% - 59%	50%		60% - 69%	70% +
Community Park	20% - 34%	35% - 44%	45% - 54%	45%		55% - 64%	65% +
Recreation Ground	15% - 29%	30% - 39%	40% - 49%	40%		50% - 59%	60% +
Gardens	25% - 39%	40% - 49%	50% - 59%	50%		60% - 69%	70% +
Natural	30% - 44%	45% - 54%	55% - 59%	60%	60% - 64%	65% - 74%	75% +
Cemeteries	25% - 39%	40% - 49%	50% - 59%	50%		60% - 69%	70% +

2.7 Localities

The city is currently divided into 12 Neighbourhood Partnership areas which were previously aligned to one of six Neighbourhood areas, however from 2016, these Neighbourhood areas were replaced with four Localities. The results of the Park Quality Assessments are now collated in Neighbourhood Partnerships and Localities format. All previous data has been retrospectively amended to show the data in the new format to enable year on year analysis.

Natural Heritage and Botanical Sites continue to be included within Locality figures due to the geographical aspects of the sites along with the continued support these sites obtain from the Locality.

2.8 Sites

Curriemuirend (South West) was re-introduced into the assessment list for 2017. However, three sites were removed from the assessment list this year, **Pike's Pool** (North West) has recently had some work undertaken on site that limits the Council's capacity to improve and maintain the park, **Sir Harry Lauder Garden** (North East) has been locked to prevent access to due to vandalism fears and **Mallen Park** (South West) where a recently installed sports facility occupies most of the park.

In total **139 sites** were identified to be assessed in 2017.



Curriemuirend Park was re-instated to the assessment list in 2017

2.9 Assessors

Assessments were undertaken by assessment teams comprising of an experienced lead officer (in most cases a formal Green Flag judge) with up to four assistant assessors. Assistants were made up from Council officers and members of the community.

Awareness of the Green Flag scheme and guidance on scoring criteria was provided for all new assessors.

In total 27 assessors were used to carry out this year’s assessments and since 2008, over 140 assessors have taken part with many being involved for two or more years.

The table below shows the number of assessors taking part each year since 2008

	2008	2009	2010	2011	2012	2013	2014	2015	2016	2017
Council Staff	24	51	38	28	28	41	54	44	11	21
Community	1	13	13	7	12	6	15	9	7	6
Total	25	64	51	35	40	47	69	53	18	27



Pentland Hills Regional Park

3 Performance Results

3.1 Bandwidth Summary

The table below show a summary of the bandwidths for 2017.

Localities

Partnership Area	No of Parks	Excellent	Very Good	Good+	Good	Fair	Poor
North East	32	10 31%	16 50%	0 0%	5 16%	1 3%	0 0%
North West	43	9 21%	27 63%	1 2%	6 14%	0 0%	0 0%
South East	33	16 48%	14 42%	2 6%	1 3%	0 0%	0 0%
South West	31	11 35%	17 55%	1 3%	1 3%	1 3%	0 0%
Citywide	139	46 33%	74 53%	4 3%	13 9%	2 1%	0 0%

Neighbourhood Partnership Areas

Partnership Area	No of Parks	Excellent	Very Good	Good+	Good	Fair	Poor
Almond	17	4 24%	12 71%	0 0%	1 6%	0 0%	0 0%
City Centre	10	3 30%	5 50%	2 20%	0 0%	0 0%	0 0%
Craigentenny / Dudd.	6	2 33%	4 67%	0 0%	0 0%	0 0%	0 0%
Forth	8	2 25%	4 50%	0 0%	2 25%	0 0%	0 0%
Inverleith	7	1 14%	5 71%	1 14%	0 0%	0 0%	0 0%
Leith	11	3 27%	4 36%	0 0%	3 27%	1 9%	0 0%
Liberton/Gilmerton	11	6 55%	4 36%	0 0%	1 9%	0 0%	0 0%
Pentlands	16	6 38%	9 56%	0 0%	0 0%	1 6%	0 0%
Portobello/Craigmillar	15	5 33%	8 53%	0 0%	2 13%	0 0%	0 0%
South Central	12	7 58%	5 42%	0 0%	0 0%	0 0%	0 0%
South West	15	5 33%	8 53%	1 7%	1 7%	0 0%	0 0%
Western Edinburgh	11	2 18%	6 55%	0 0%	3 27%	0 0%	0 0%
Citywide	139	46 33%	74 53%	4 3%	13 9%	2 1%	0 0%

3.2 Short Term Trend

The tables below and overleaf show a summary of the site bandwidth trends against the 2016 or last know site results.

Localities

Locality	No of Parks	Improved	Deteriorated	Static	New
North East	32	8 25%	1 3%	23 72%	0 0%
North West	43	5 12%	2 5%	36 84%	0 0%
South East	33	9 27%	3 9%	21 64%	0 0%
South West	31	9 29%	1 3%	21 68%	0 0%
Citywide	139	31 22%	7 5%	101 73%	0 0%

Neighbourhood Partnership Areas

Partnership Area	No of Parks	Improved		Deteriorated		Static		New	
Almond	17	4	24%	0	0%	13	76%	0	0%
City Centre	10	8	80%	0	0%	2	20%	0	0%
Craigtinny / Dudd.	6	0	0%	0	0%	6	100%	0	0%
Forth	8	1	13%	0	0%	7	88%	0	0%
Inverleith	7	0	0%	1	14%	6	86%	0	0%
Leith	11	4	36%	1	9%	6	55%	0	0%
Liberton/Gilmerton	11	0	0%	2	18%	9	82%	0	0%
Pentlands	16	4	25%	0	0%	12	75%	0	0%
Portobello/Craigmillar	15	4	27%	0	0%	11	73%	0	0%
South Central	12	1	8%	1	8%	10	83%	0	0%
South West	15	5	33%	1	7%	9	60%	0	0%
Western Edinburgh	11	0	0%	1	9%	10	91%	0	0%
Citywide	139	31	22%	7	5%	101	73%	0	0%

3.3 Park Quality Score Averages

The tables and graph below and overleaf show the average PQS score over the last five years.

Localities

Locality	No of Parks	2013 Avg PQS	2014 Avg PQS	2015 Avg PQS	2016 Avg PQS	2017 Avg PQS	Trend
North East	32	57%	59%	59%	61%	63%	↑
North West	43	59%	60%	62%	63%	64%	↑
South East	33	61%	63%	65%	67%	70%	↑
South West	31	58%	58%	61%	63%	65%	↑
Citywide	139	59%	60%	62%	63%	65%	↑

Neighbourhood Partnership Areas

Partnership Area	No of Parks	2013 Avg PQS	2014 Avg PQS	2015 Avg PQS	2016 Avg PQS	2017 Avg PQS	Trend
Almond	17	57%	58%	60%	61%	64%	↑
City Centre	10	58%	58%	60%	59%	68%	↑
Craigtinny / Dudd.	6	58%	62%	62%	66%	66%	↔
Forth	8	59%	57%	60%	62%	62%	↔
Inverleith	7	65%	67%	67%	68%	68%	↔
Leith	11	57%	57%	56%	58%	61%	↑
Liberton/Gilmerton	11	59%	62%	66%	68%	67%	↓
Pentlands	16	59%	59%	61%	63%	66%	↑
Portobello/Craigmillar	15	58%	58%	59%	61%	64%	↑
South Central	12	66%	67%	69%	73%	73%	↔
South West	15	58%	57%	60%	62%	64%	↑
Western Edinburgh	11	60%	61%	62%	62%	61%	↓
Citywide	139	59%	60%	62%	63%	65%	↑

3.4 Edinburgh Minimum Standard

The Edinburgh Minimum Standard was agreed following the assessments in 2008 to provide a minimum benchmark of quality for each park classification.

The table below shows the park quality scores agreed as the Edinburgh Minimum Standards for each type of park.

	Premier Parks	City Parks	Community Parks	Recreation Grounds	Gardens	Natural Parks	Cemeteries
Edinburgh Minimum Standard	70%	50%	45%	40%	50%	60%	50%

Performance indicators have been developed to show the percentage of sites in each Locality that meet this standard with targets set to drive improvement. The targets through to 2017 are listed below.

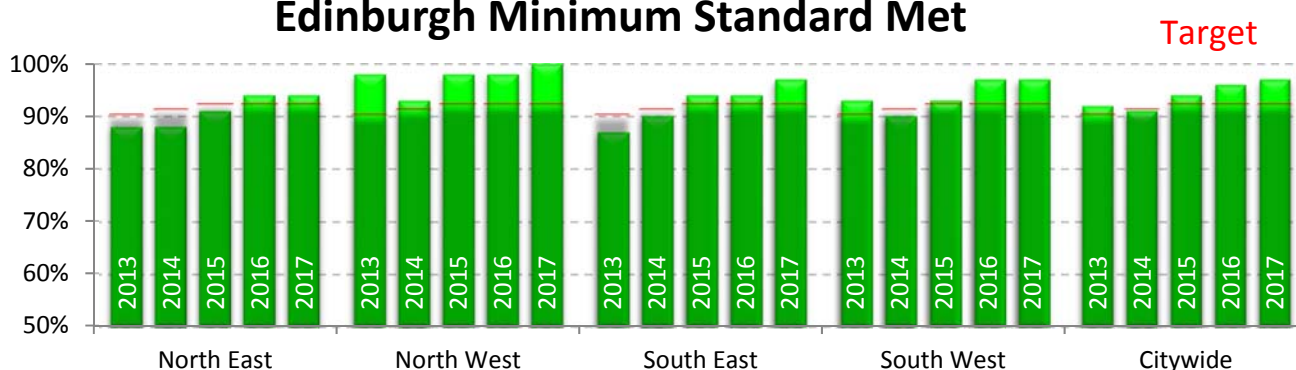
	2008	2009	2010	2011	2012	2013	2014	2015	2016	2017
Target	55%	65%	70%	75%	80%	90%	91%	92%	92%	92%

The tables and graphs below and overleaf show the percentage of sites meeting the Edinburgh Minimum Standard in each Locality and Neighbourhood Partnership area against the annual target over the last five years. Due to the fluctuation in the number of sites, the actual number of parks meeting the standard along with the number of parks assessed have been included for information.

Localities

Locality	2013	2014	2015	2016	2017	Trend	Target Met
North East	29/33 88%	29/33 88%	30/33 91%	31/33 94%	30/32 94%	↔	Yes
North West	42/43 98%	40/43 93%	43/44 98%	43/44 98%	43/43 100%	↑	Yes
South East	27/31 87%	28/31 90%	29/31 94%	31/33 94%	32/33 97%	↑	Yes
South West	28/30 93%	27/30 90%	28/30 93%	30/31 97%	30/31 97%	↔	Yes
Citywide	126/137 92%	124/137 91%	130/138 94%	135/141 96%	135/139 97%	↑	Yes

Edinburgh Minimum Standard Met



Neighbourhood Partnership Areas

Partnership Area	2013	2014	2015	2016	2017	Trend	Target Met
Almond	17/18 94%	16/18 89%	17/18 94%	17/18 94%	17/17 100%	↑	Yes
City Centre	6/8 75%	5/8 63%	6/8 75%	8/10 80%	10/10 100%	↑	Yes
Craigtinny / Duddingston	5/6 83%	6/6 100%	6/6 100%	6/6 100%	6/6 100%	↔	Yes
Forth	8/8 100%	8/8 100%	8/8 100%	8/8 100%	8/8 100%	↔	Yes
Inverleith	7/7 100%	6/7 86%	7/7 100%	7/7 100%	7/7 100%	↔	Yes
Leith	9/11 82%	9/11 82%	9/11 82%	9/11 82%	9/11 82%	↔	No
Liberton / Gilmerton	10/11 91%	11/11 100%	11/11 100%	11/11 100%	10/11 91%	↓	No
Pentlands	15/16 94%	15/16 94%	15/16 94%	16/16 100%	15/16 94%	↓	Yes
Portobello / Craigmillar	15/16 94%	14/16 88%	15/16 94%	16/16 100%	15/15 100%	↔	Yes
South Central	11/12 92%	12/12 100%	12/12 100%	12/12 100%	12/12 100%	↔	Yes
South West	13/14 93%	12/14 86%	13/14 93%	14/15 93%	15/15 100%	↑	Yes
Western Edinburgh	10/10 100%	10/10 100%	11/11 100%	11/11 100%	11/11 100%	↔	Yes
Citywide	126/137 92%	124/137 91%	130/138 94%	135/141 96%	135/139 97%	↑	Yes



St Margaret's Park

4 Area Results

The following pages are split into Localities showing the site bandwidth results over the last five years, the short-term trend and whether or not the park meets the Edinburgh Minimum Standard. The parks are grouped by Neighbourhood Partnership Area.

In addition, graphs are included to demonstrate an area's average park quality score, percentage of parks meeting the Edinburgh Minimum Standard, bandwidths, short term trend and selected criteria averages. Plus, all parks in the area are listed in quality order with the most improved and deteriorated parks highlighted. Finally, a summary of which criteria the judges feel improvement should be targeted is also included.

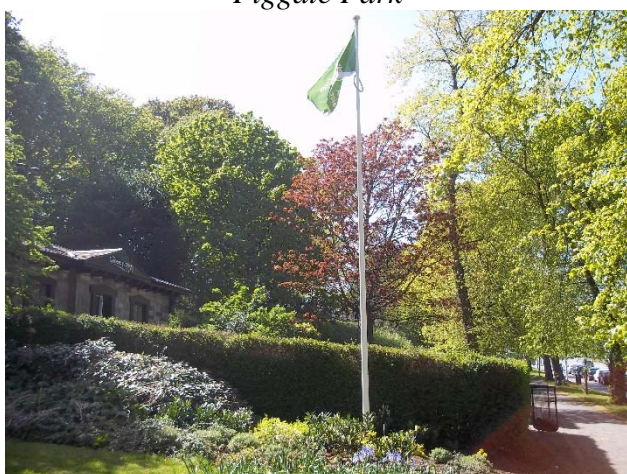
Additional pages are included to list Natural Heritage and Green Flag Award parks with similar information.



Figgate Park



Station Road Park



London Road Gardens



Harrison Park

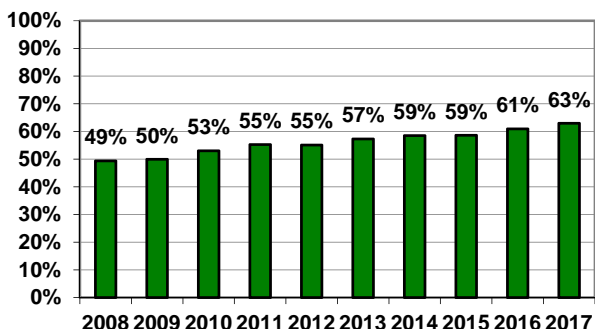
4.1 North East Edinburgh

Site Name	Park Type	2013	2014	2015	2016	2017	Trend	Std Met
CRAIGENTINNY / DUDDINGSTON NEIGHBOURHOOD PARTNERSHIP AREA								
Baronscourt Park	Community	Fair	Good	V. Good	V. Good	V. Good	→←	Yes
Figgate Burn Park	Community	Excellent	Excellent	Excellent	Excellent	Excellent	→←	Yes
Lochend Park	Community	Excellent	Excellent	Excellent	Excellent	Excellent	→←	Yes
Meadowfield Park	Community	V. Good	Excellent	V. Good	V. Good	V. Good	→←	Yes
Meadows Yard	Natural	Good+	V. Good	V. Good	V. Good	V. Good	→←	Yes
Seafield Rec Ground	Recreation	V. Good	Good	Good	V. Good	V. Good	→←	Yes
LEITH NEIGHBOURHOOD PARTNERSHIP AREA								
Dalmeny Street Park	Community	V. Good	V. Good	V. Good	Good	V. Good	↑	Yes
Henderson Gardens Park	Community	Good	Good	Fair	Fair	Fair	→←	No
Hillside Crescent Gdns	Garden	Good	Good	Good	V. Good	Excellent	↑	Yes
Hopetoun Crescent Gdns	Garden	Excellent	Excellent	Excellent	Excellent	Excellent	→←	Yes
Keddie Park	Community	Fair	Fair	Good	Good	Good	→←	Yes
Leith Links	Premier	Fair	Fair	Fair	Fair	Good	↑	No
Montgomery Street Park	Community	V. Good	V. Good	Excellent	Excellent	V. Good	↓	Yes
Pilrig Park	Community	Good	V. Good	Good	V. Good	Excellent	↑	Yes
Redbraes Park	Community	V. Good	V. Good	Good	Good	Good	→←	Yes
St Marks Park	Community	V. Good	V. Good	Good	V. Good	V. Good	→←	Yes
Taylor Gardens	Garden	Good	Good	Good	V. Good	V. Good	→←	Yes
PORTOBELLO / CRAIGMILLAR NEIGHBOURHOOD PARTNERSHIP AREA								
Abercorn Park	Community	Excellent	Excellent	Excellent	Excellent	Excellent	→←	Yes
Bingham Park	Community	Good	Good	Good	Good	V. Good	↑	Yes
Brighton Park	Community	V. Good	V. Good	V. Good	V. Good	Excellent	↑	Yes
Brunstane Mill	Natural	Good+	Good+	Good+	Good+	V. Good	↑	Yes
Cairmtows Park	Community	Good	Good	Good	Good	Good	→←	Yes
C'millar Castle inc H'hill	Natural	V. Good	V. Good	V. Good	V. Good	V. Good	→←	Yes
Hays Park	Community	Good	Fair	Fair	Good	Good	→←	Yes
Hunters Hall Park	City Park	Fair	Fair	Good	V. Good	V. Good	→←	Yes
Jewel Park	Community	Good	V. Good	Good	V. Good	V. Good	→←	Yes
Joppa Quarry Park	Community	Good	V. Good	V. Good	V. Good	V. Good	→←	Yes
Magdalene Glen	Community	V. Good	V. Good	V. Good	Good	V. Good	↑	Yes
Newcraighall Park	Community	V. Good	V. Good	V. Good	Excellent	Excellent	→←	Yes
Portobello Comm Gdn	Community	Excellent	Excellent	Excellent	Excellent	Excellent	→←	Yes
Rosefield Park	Community	Excellent	Excellent	Excellent	Excellent	Excellent	→←	Yes
Straiton Place Park	Community	Good	V. Good	V. Good	V. Good	V. Good	→←	Yes

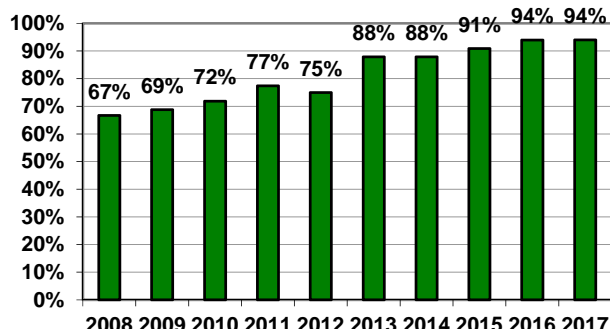
█ = Green Flag Award park

North East Edinburgh

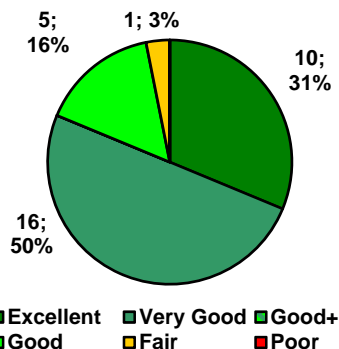
Average PQS



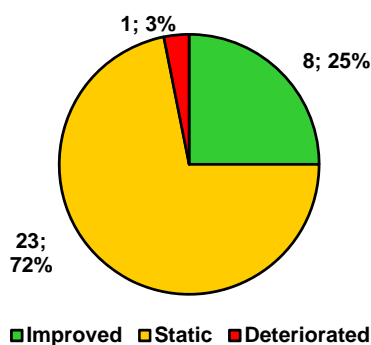
% of parks meeting Edinburgh Minimum Standard



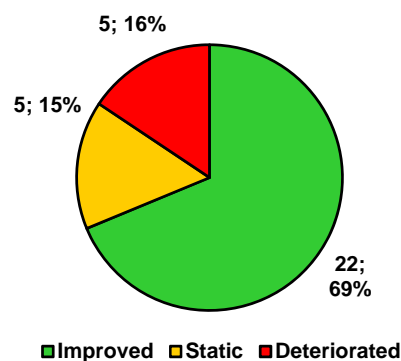
Bandwidths



Bandwidth Trend



Park Quality Scores Trend



Selected Criteria Scores Averages & Trends

North East Edinburgh Locality – 32 Parks

	2016	2017	Trend	2017 Scores		Criteria scores changes		
	Avg	Avg		Min	Max	Increased	Static	Decreased
Welcoming	6.0	6.2	↑	3	8	6	21	5
Good & Safe Access	6.6	6.8	↑	2	9	6	20	6
Signage	5.9	6.0	↑	3	9	7	18	7
Safe Equipment & Facilities	6.8	6.9	↑	5	8	7	21	4
Dog Fouling	7.1	6.5	↓	1	9	9	9	14
Facility Provision	6.7	6.8	↑	2	9	5	24	3
Litter Management	6.4	5.8	↓	2	8	4	10	18
Grounds Maintenance	5.8	5.9	↑	3	8	11	13	8
Infrastructure Maintenance	6.0	6.3	↑	4	8	9	20	3
Equipment Maintenance	6.3	6.5	↑	4	8	10	19	3
Trees & Woodlands	6.7	6.8	↑	4	8	8	19	5
Conservation Flora & Fauna	6.2	6.4	↑	2	9	8	19	5
Information Provision	5.0	4.9	↓	1	8	5	21	6
Interpretative Provision	4.2	4.1	↓	1	9	6	23	3

North East Edinburgh parks ranked in order of 2017 Park Quality Score

Rank	Citywide Rank	Park Name	Park Type	2016	2017	+ / - %
1=	6=	Figgate Burn Park	Community	76%	78%	+2%
1=	6=	Hopetoun Crescent Gardens	Garden	74%	78%	+4%
1=	6=	Rosefield Park	Community	76%	78%	+2%
4	17=	Portobello Community Gdn	Community	72%	74%	+2%
5=	23=	Lochend Park	Community	73%	73%	0%
5=	23=	Pilrig Park	Community	57%	73%	+16%
7=	31=	Craigmillar Castle Park	Natural	68%	72%	+4%
7=	31=	Meadows Yard	Natural	70%	72%	+2%
9=	44=	Abercorn Park	Community	69%	71%	+2%
9=	44=	Newcraighall Park	Community	66%	71%	+5%
11	49=	Hillside Crescent Gardens	Garden	63%	70%	+7%
12	62=	Brunstane Mill	Natural	61%	67%	+6%
13=	67=	Brighton Park	Community	63%	65%	+2%
13=	67=	Leith Links	Premier	63%	65%	+2%
15	71=	Montgomery Street Park	Community	65%	64%	-1%
16=	79=	Joppa Quarry Park	Community	58%	62%	+4%
16=	79=	Meadowfield Park	Community	64%	62%	-2%
18=	88=	Dalmeny Street Park	Community	54%	61%	+7%
18=	88=	Straiton Place Park	Community	63%	61%	-2%
20=	95=	Baronscourt Park	Community	59%	60%	+1%
20=	95=	Bingham Park	Community	54%	60%	+6%
20=	95=	Hunters Hall Park (JKC)	City	60%	60%	0%
20=	95=	Taylor Gardens	Garden	60%	60%	0%
24=	109=	Jewel Park	Community	57%	58%	+1%
24=	109=	Magdalene Glen	Community	54%	58%	+4%
24=	109=	St Mark's Park	Community	56%	58%	+2%
27	127=	Redbraes Park	Community	54%	54%	0%
28=	132=	Cairntows Park	Community	48%	52%	+4%
28=	132=	Keddie Park	Community	53%	52%	-1%
30	134	Seafield Rec Ground	Recreation	51%	51%	0%
31	136=	Hays Park	Community	48%	49%	+1%
32	139	Henderson Gardens Park	Community	42%	40%	-2%



Rosefield Park, Hopetoun Crescent Gardens (pictured) and Figgate Park were the highest scoring parks in the North East Edinburgh with a PQS of 78%.

Hopetoun Crescent Gardens improved the most out the three increasing its score by 4 points rising eight places in the citywide rank to 6th.

North East Edinburgh

Most improved and deteriorated North East parks



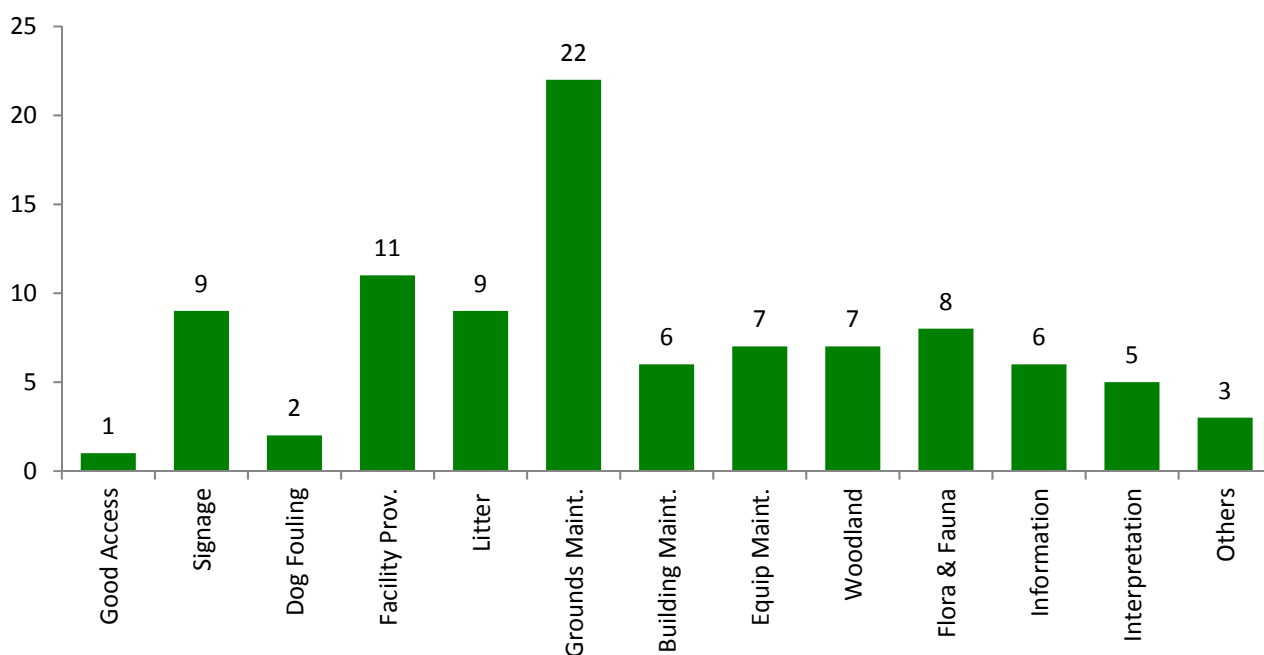
Pilrig Park was the most improved park in North East Edinburgh with an increase of 16 points to 73% with good increases across most criteria and a notable improvement in litter management. Pilrig Park is now ranked equal 23rd in the city with a remarkable increase of 84 places.



Henderson Gardens (pictured) along with Meadowfield Park and Straiton Place Park have deteriorated the most in quality falling 2 points each but Henderson Gardens has also been judged to be the worst park in the city with a quality score of 40%.

Recommendations

Following the park assessment, judges were asked to provide three recommendations that, based on their findings, would improve the quality of the park. These recommendations were linked to one criterion so as to provide an overview of where judges thought improvements should be focused. The chart below shows the number of recommendations for each of the criteria across all parks in the locality.



4.2 North West Edinburgh

Park Name	Park Type	2013	2014	2015	2016	2017	Trend	Std Met
ALMOND NEIGHBOURHOOD PARTNERSHIP AREA								
Allison Park, Kirkliston	Community	V. Good	V. Good	V. Good	V. Good	V. Good	↔	Yes
Cammo Estate	Natural	V. Good	V. Good	V. Good	Excellent	Excellent	↔	Yes
Cramond Foreshore	Natural	V. Good	V. Good	V. Good	V. Good	V. Good	↔	Yes
Cramond Walled Garden	Garden	Good	Good	Good	Good	V. Good	↑	Yes
Davidsons Mains Park	City	V. Good	V. Good	V. Good	V. Good	Excellent	↑	Yes
Dundas Park, SQ	Community	Good	Good	V. Good	V. Good	V. Good	↔	Yes
Ferry Glen, SQ	Natural	Good+	Good	Good+	Good+	V. Good	↑	Yes
Haugh Park	Community	Excellent	V. Good	V. Good	V. Good	V. Good	↔	Yes
Inchcolm Park, SQ	Community	V. Good	V. Good	V. Good	V. Good	V. Good	↔	Yes
KGV Park, SQ	Community	V. Good	Good	V. Good	V. Good	V. Good	↔	Yes
Lauriston Castle	Garden	V. Good	Good	V. Good	Excellent	Excellent	↔	Yes
Parkside, Newbridge	Community	Good	V. Good	Good	V. Good	V. Good	↔	Yes
Ratho Stn Flyover Park	Recreation	Good	Good	Good	Good	V. Good	↑	Yes
Ratho Station Park	Community	Good	Good	V. Good	V. Good	V. Good	↔	Yes
River Almond Walkway	Natural	Good+	Good+	Good+	V. Good	V. Good	↔	Yes
Riverside Park	Community	Good	V. Good	V. Good	Good	Good	↔	Yes
Station Road Pk, SQ	Community	V. Good	Excellent	Excellent	Excellent	Excellent	↔	Yes
FORTH NEIGHBOURHOOD PARTNERSHIP AREA								
East Pilton Park	Community	V. Good	V. Good	V. Good	V. Good	V. Good	↔	Yes
Granton Crescent Park	Community	V. Good	V. Good	V. Good	V. Good	V. Good	↔	Yes
Gypsy Brae	City	V. Good	Good	V. Good	V. Good	V. Good	↔	Yes
Muirhouse Park	Community	V. Good	Good	Good	Good	Good	↔	Yes
Silverknowes Park	Recreation	Good	V. Good	V. Good	Good	Good	↔	Yes
Starbank Park	Community	V. Good	V. Good	Excellent	Excellent	Excellent	↔	Yes
Victoria Park	City	Excellent	V. Good	V. Good	Excellent	Excellent	↔	Yes
West Pilton Park	Community	V. Good	Good	Good	Good	V. Good	↑	Yes
INVERLEITH NEIGHBOURHOOD PARTNERSHIP AREA								
Easter Drylaw Park	Community	V. Good	V. Good	Good	V. Good	V. Good	↔	Yes
Inverleith Park	Premier	Good+	Good	Good+	Good+	Good+	↔	Yes
KGV Park (Eyre Place)	City	V. Good	V. Good	V. Good	Excellent	V. Good	↓	Yes
Orchard Brae Park	Community	V. Good	V. Good	V. Good	V. Good	V. Good	↔	Yes
Ravelston Park	Community	Excellent	Excellent	Excellent	Excellent	Excellent	↔	Yes
Ravelston Woods	Natural	V. Good	V. Good	V. Good	V. Good	V. Good	↔	Yes
Rocheid Path	Natural	Good+	V. Good	V. Good	V. Good	V. Good	↔	Yes

■ = Green Flag Award Site

North West Edinburgh

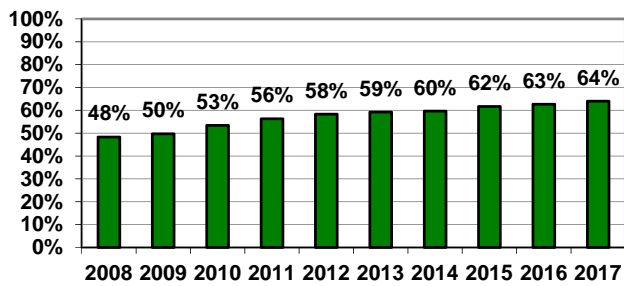
Park Name	Park Type	2013	2014	2015	2016	2017	Trend	Std Met
WESTERN EDINBURGH NEIGHBOURHOOD PARTNERSHIP AREA								
Balgreen Park	Community	Good	V. Good	V. Good	V. Good	V. Good	→←	Yes
Buttercup Farm Park	Community			V. Good	V. Good	V. Good	→←	Yes
Clermiston Park	Community	Good	V. Good	V. Good	V. Good	Good	↓	Yes
Corstorphine Hill	Natural	Excellent	V. Good	V. Good	Excellent	Excellent	→←	Yes
Drumbrae Park	Community	Good	V. Good	V. Good	V. Good	V. Good	→←	Yes
Fauldburn Park	Community	V. Good	V. Good	V. Good	V. Good	V. Good	→←	Yes
Glendevon Park	Community	V. Good	V. Good	V. Good	V. Good	V. Good	→←	Yes
Gyle Park	City	V. Good	V. Good	V. Good	V. Good	V. Good	→←	Yes
Roseburn Park	City	V. Good	V. Good	V. Good	Good	Good	→←	Yes
St Margarets Park	Community	Excellent	Excellent	Excellent	Excellent	Excellent	→←	Yes
Union Park	City	Good	Good	Good	Good	Good	→←	Yes



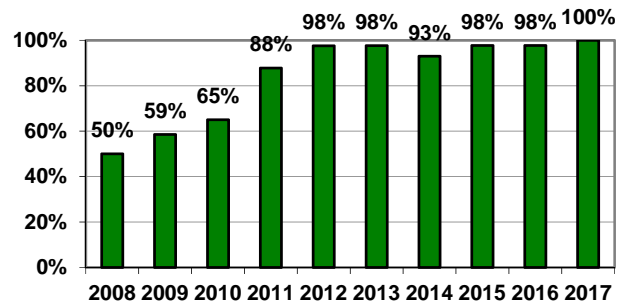
Starbank Park was judged the third best park in the city and best in the North West with a fantastic increase of 5 points to 83% in 2017.

North West Edinburgh

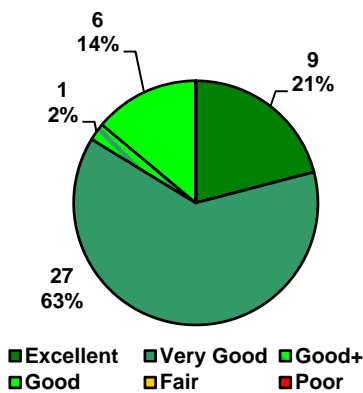
Average PQS



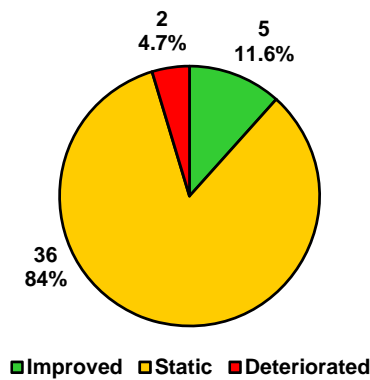
% of parks meeting Edinburgh Minimum Standard



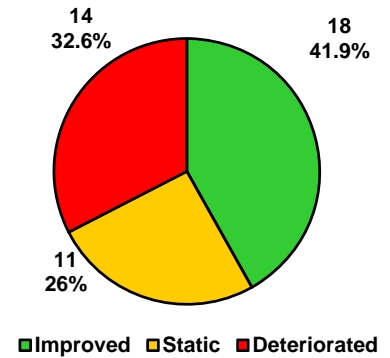
Bandwidths



Bandwidth Trend



Park Quality Scores Trend



Selected Criteria Scores Averages & Trends

North West Edinburgh Locality – 43 Parks

	2016	2017	Trend	2017 Scores		Criteria scores changes		
	Avg	Avg		Min	Max	Increased	Static	Decreased
Welcoming	6.4	6.2	↓	3	9	7	25	11
Good & Safe Access	6.6	6.5	↓	4	9	6	28	9
Signage	6.5	6.6	↑	5	9	10	28	5
Safe Equipment & Facilities	6.4	6.3	↓	4	8	7	24	12
Dog Fouling	7.8	7.6	↓	5	10	8	20	15
Facility Provision	7.1	7.2	↑	3	9	7	32	4
Litter Management	6.8	6.8	↔	2	10	16	12	15
Grounds Maintenance	6.1	5.9	↓	2	9	12	19	12
Infrastructure Maintenance	6.2	6.2	↔	4	8	10	19	14
Equipment Maintenance	6.6	6.6	↔	6	9	5	31	7
Trees & Woodlands	6.5	6.8	↑	5	9	13	27	3
Conservation Flora & Fauna	6.4	6.6	↑	3	10	15	24	4
Information Provision	5.8	5.7	↓	2	9	9	19	15
Interpretative Provision	4.3	4.7	↑	1	9	13	25	5

North West Edinburgh parks ranked in order of 2017 Park Quality Score

Rank	Citywide Rank	Site Name	Classification	2016	2017	+ / - %
1	3	Starbank Park	Community	78%	83%	+5%
2=	6=	Cammo Estate	Natural	75%	78%	+3%
2=	6=	Corstorphine Hill	Natural	76%	78%	+2%
4	17=	Davidson's Mains Park	City	66%	74%	+8%
5=	23=	Inverleith Park	Premier	73%	73%	0%
5=	23=	Lauriston Castle	Garden	70%	73%	+3%
5=	23=	Ravelston Woods	Natural	70%	73%	+3%
8=	31=	River Almond Walkway	Natural	66%	72%	+6%
8=	31=	Station Road Park	Community	68%	72%	+4%
8=	31=	Victoria Park	City	73%	72%	-1%
11	45=	Rocheid Path	Natural	72%	71%	-1%
12=	52=	Cramond Foreshore	Natural	69%	69%	0%
12=	52=	Ravelston Park	Community	70%	69%	-1%
14=	55=	Ferry Glen & Back Braes	Natural	60%	68%	+8%
14=	55=	St Margaret's Park	Community	71%	68%	-3%
16	62=	King George V Pk (Eyre Pl.)	City	70%	67%	-3%
17	67=	Gypsy Brae Rec Ground	City	65%	65%	0%
18=	75=	Buttercup Farm Park	Community	63%	63%	0%
18=	75=	Orchard (Brae) Park	Community	63%	63%	0%
20=	79=	Allison Park	Community	62%	62%	0%
20=	79=	Easter Drylaw Park	Community	58%	62%	+4%
20=	79=	Gyle Park	City	64%	62%	-2%
20=	79=	Inchcolm Park	Community	61%	62%	+1%
24=	88=	Cramond Walled Garden	Garden	58%	61%	+3%
24=	88=	Drumbrae Park	Community	60%	61%	+1%
24=	88=	Haugh Park	Community	59%	61%	+2%
27=	95=	Dundas Park	Community	59%	60%	+1%
27=	95=	East Pilton Park	Community	62%	60%	-2%
27=	95=	Ratho Station Park	Community	60%	60%	0%
27=	95=	West Pilton Park	Community	54%	60%	+6%
31	109=	Roseburn Park	City	59%	58%	-1%
32=	115=	Fauldburn Park	Community	60%	57%	-3%
32=	115=	King George V Park (SQ)	Community	57%	57%	0%
32=	115=	Parkside, Newbridge	Community	60%	57%	-3%
32=	115=	Union Park	City	54%	57%	+3%
36	120=	Glendevon Park	Community	56%	56%	0%
37=	124=	Balgreen Park	Community	60%	55%	-5%
37=	124=	Granton Crescent Park	Community	57%	55%	-2%
39=	127=	Clermiston Park	Community	60%	54%	-6%
39=	127=	Muirhouse Park	Community	54%	54%	0%
41	130=	Ratho Station Flyover Park	Recreation	46%	53%	+7%
42	135	Riverside Park	Community	54%	50%	-4%
43	136=	Silverknowes Park	Recreation	49%	49%	0%

North West Edinburgh

Most improved and deteriorated North West Edinburgh parks



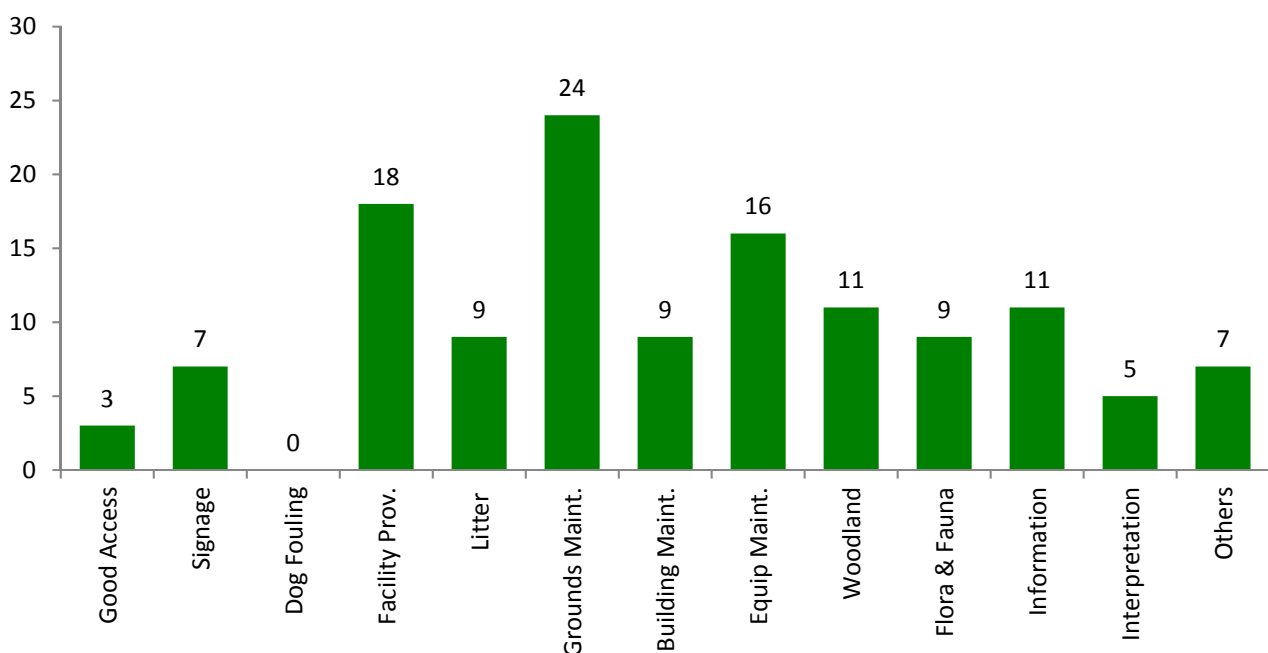
Davidson's Mains Park (pictured) and Ferry Glen & Back Braes were the most improved parks in North West Edinburgh with an increase of 8 points each. Davidson's Mains Park increased its citywide ranking by jumping 36 places to equal 17th with a score of 74% and good increases in welcoming and grounds maintenance.



Clermiston Park has deteriorated in quality the most in North West Edinburgh falling 6 points to 54% and dropping 43 places in the citywide ranking to equal 127th, with drops in score across the maintenance criteria recorded.

Judge's recommendations

Following the park assessment, judges were asked to provide recommendations that, based on their findings, would improve the quality of the site. These recommendations were linked to one criterion so as to provide an overview of where judges think improvements should be focused. The chart below shows the number of recommendations for each of the criteria across all parks in the locality.



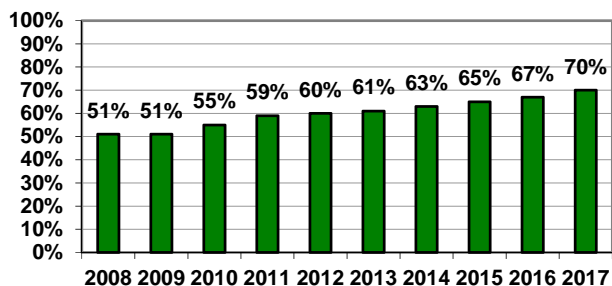
4.3 South East Edinburgh

Park Name	Park Type	2013	2014	2015	2016	2017	Trend	Std Met
CITY CENTRE NEIGHBOURHOOD PARTNERSHIP AREA								
Atholl Crescent	Garden				Good	V. Good	↑	Yes
Bellevue Crescent Gdns	Garden	Fair	Fair	Fair	Fair	V. Good	↑	Yes
Calton Hill	Premier	Good	Fair	Fair	Fair	Good+	↑	Yes
Coates Crescent	Garden				Good	V. Good	↑	Yes
Dunbars Close Garden	Garden	V. Good	Excellent	Excellent	Excellent	Excellent	↔	Yes
Gayfield Square	Garden	Good	Good	Good	Good	V. Good	↑	Yes
Grannies Green	Garden	Good	Fair	Good	Good	V. Good	↑	Yes
London Road Gardens	City	V. Good	V. Good	V. Good	V. Good	Excellent	↑	Yes
Princes Street Gardens	Premier	Good+	Good+	Good+	Good+	Good+	↔	Yes
Regent Road Park	Community	V. Good	V. Good	V. Good	V. Good	Excellent	↑	Yes
LIBERTON / GILMERTON NEIGHBOURHOOD PARTNERSHIP AREA								
B'diehouse Burn Valley	Natural	Good	Good+	V. Good	Good+	Good	↓	No
Drum Park	Community	V. Good	V. Good	Excellent	Excellent	Excellent	↔	Yes
Ferniehill Community Pk	Community	Excellent	Excellent	Excellent	Excellent	Excellent	↔	Yes
Fernieside Rec Ground	Recreation	V. Good	V. Good	V. Good	Excellent	V. Good	↓	Yes
Gracemount Comm Park	Community	Good	Good	V. Good	V. Good	V. Good	↔	Yes
Inch Park	City	V. Good	V. Good	V. Good	Excellent	Excellent	↔	Yes
Liberton Park	Community	V. Good	V. Good	Excellent	Excellent	Excellent	↔	Yes
Moredun Park	Community	Good	Good	V. Good	V. Good	V. Good	↔	Yes
Mortonhall Comm Park	Community	Good	V. Good	V. Good	V. Good	V. Good	↔	Yes
Seven Acre Park	Community	Excellent	Excellent	Excellent	Excellent	Excellent	↔	Yes
St Katharine's Park	Community	Excellent	Excellent	Excellent	Excellent	Excellent	↔	Yes
SOUTH CENTRAL NEIGHBOURHOOD PARTNERSHIP AREA								
Bauks View	Natural	V. Good	V. Good	V. Good	V. Good	V. Good	↔	Yes
Braid Hills	Natural	Good	Good+	V. Good	V. Good	V. Good	↔	Yes
Braidburn Valley Park	Community	Excellent	Excellent	Excellent	Excellent	Excellent	↔	Yes
Deaconess Garden	Garden	V. Good	V. Good	V. Good	V. Good	V. Good	↔	Yes
H'tage Braid inc B'ford	Natural	Excellent	Excellent	V. Good	Excellent	Excellent	↔	Yes
Morgan Playing Fields	Recreation	Excellent	Excellent	Excellent	Excellent	Excellent	↔	Yes
Morningside Park	Community	Excellent	Excellent	Excellent	Excellent	Excellent	↔	Yes
Nicholson Square	Garden	V. Good	V. Good	V. Good	Excellent	V. Good	↓	Yes
Prestonfield Park	Community	Excellent	Excellent	Excellent	Excellent	Excellent	↔	Yes
Prestonfield War Mem.	Garden	Excellent	Excellent	Excellent	Excellent	Excellent	↔	Yes
St Patrick's Square	Garden	Good	Good	V. Good	Excellent	Excellent	↔	Yes
The Meadows & B'Field	Premier	Good+	Good+	Good+	Good+	V. Good	↑	Yes

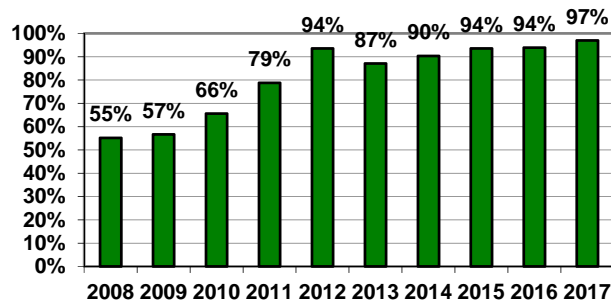
 = Green Flag Award Site

South East Edinburgh

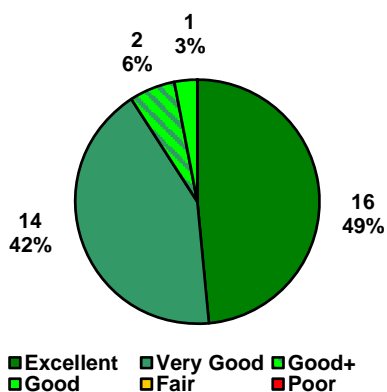
Average PQS



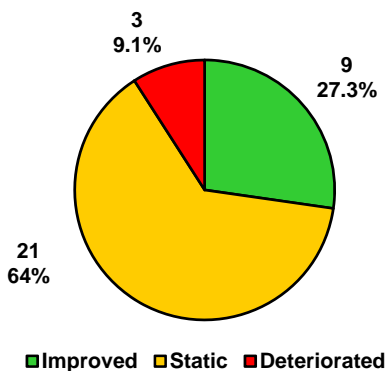
% of parks meeting Edinburgh Minimum Standard



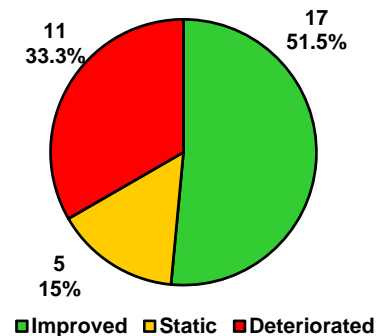
Bandwidths



Bandwidth Trend



Park Quality Scores Trend



Selected Criteria Scores Averages & Trends

South East Edinburgh Locality – 33 Parks

	2016	2017	Trend	2017 Scores		Criteria scores changes		
	Avg	Avg		Min	Max	Increased	Static	Decreased
Welcoming	6.8	6.6	↓	4	9	5	20	8
Good & Safe Access	6.8	6.8	↔	4	9	5	23	5
Signage	6.9	7.2	↑	5	9	8	18	7
Safe Equipment & Facilities	7.1	7.0	↓	3	9	6	20	7
Dog Fouling	8.2	8.0	↓	4	9	7	16	10
Facility Provision	7.2	7.4	↑	5	9	9	17	7
Litter Management	6.6	6.8	↑	3	9	7	17	9
Grounds Maintenance	6.6	6.6	↔	3	9	9	15	9
Infrastructure Maintenance	7.0	7.0	↔	5	9	7	19	7
Equipment Maintenance	7.0	7.0	↔	4	9	4	25	4
Trees & Woodlands	7.0	7.0	↔	5	8	4	25	4
Conservation Flora & Fauna	6.6	6.7	↑	4	9	7	20	6
Information Provision	6.4	7.0	↑	5	9	9	19	5
Interpretative Provision	6.3	7.2	↑	4	9	11	19	3

South East Edinburgh parks ranked in order of 2017 Park Quality Score

Rank	Citywide Rank	Park Name	Park Type	2016	2017	+ / - %
1	1=	Seven Acre Park	Community	83%	85%	+2%
2	5	Prestonfield Park	Community	78%	79%	+1%
3=	11=	Ferniehill Community Park	Community	78%	77%	-1%
3=	11=	H'tage of Braid inc Blackford	Natural	76%	77%	+1%
5=	14=	Dunbar's Close Garden	Garden	71%	75%	+4%
5=	14=	Morningside Park	Community	75%	75%	0%
5=	14=	The Meadows & B' field Links	Premier	73%	75%	+2%
8=	17=	Bauks View	Natural	74%	74%	0%
8=	17=	Braidburn Valley Park	Community	74%	74%	0%
8=	17=	St Katharine's Park	Community	73%	74%	+1%
11	23=	Calton Hill	Premier	58%	73%	+15%
12=	31=	Braid Hills	Natural	71%	72%	+1%
12=	31=	London Road Gardens	City	67%	72%	+5%
12=	31=	Morgan Playing Fields	Recreation	72%	72%	0%
12=	31=	Prestonfield War Memorial	Garden	75%	72%	-3%
12=	31=	Regent Road Park	Community	62%	72%	+10%
17=	45=	Inch Park	City	72%	71%	-1%
17=	45=	St Patrick's Square	Garden	73%	71%	-2%
19	50=	Princes Street Gardens	Premier	73%	70%	-3%
20	52=	Liberton Park	Community	70%	69%	-1%
21=	55=	Atholl Crescent	Garden	56%	68%	+12%
21=	55=	Coates Crescent	Garden	53%	68%	+15%
21=	55=	Deaconess	Garden	68%	68%	0%
24	62=	Drum Park	Community	68%	67%	-1%
25	71=	Gracemount Community Park	Community	63%	64%	+1%
26=	75=	Bellevue Crescent Gardens	Garden	42%	63%	+21%
26=	75=	Nicolson Square	Garden	70%	63%	-7%
28	79=	Gayfield Square	Garden	52%	62%	+10%
29	88=	Mortonhall Community Park	Community	58%	61%	+3%
30	95=	Granny's Green	Garden	58%	60%	+2%
31	106=	Fernieside Recreation Ground	Recreation	62%	59%	-3%
32	109=	Moredun Park	Community	61%	58%	-3%
33	120=	Burdiehouse Burn Valley Park	Natural	62%	56%	-6%



Seven Acre Park improved to join the Pentland Hills as the best parks in Edinburgh.



Burdiehouse Burn Valley Park, the Green Flag Award site has slipped in quality this year.

South East Edinburgh

Most improved and deteriorated South East parks



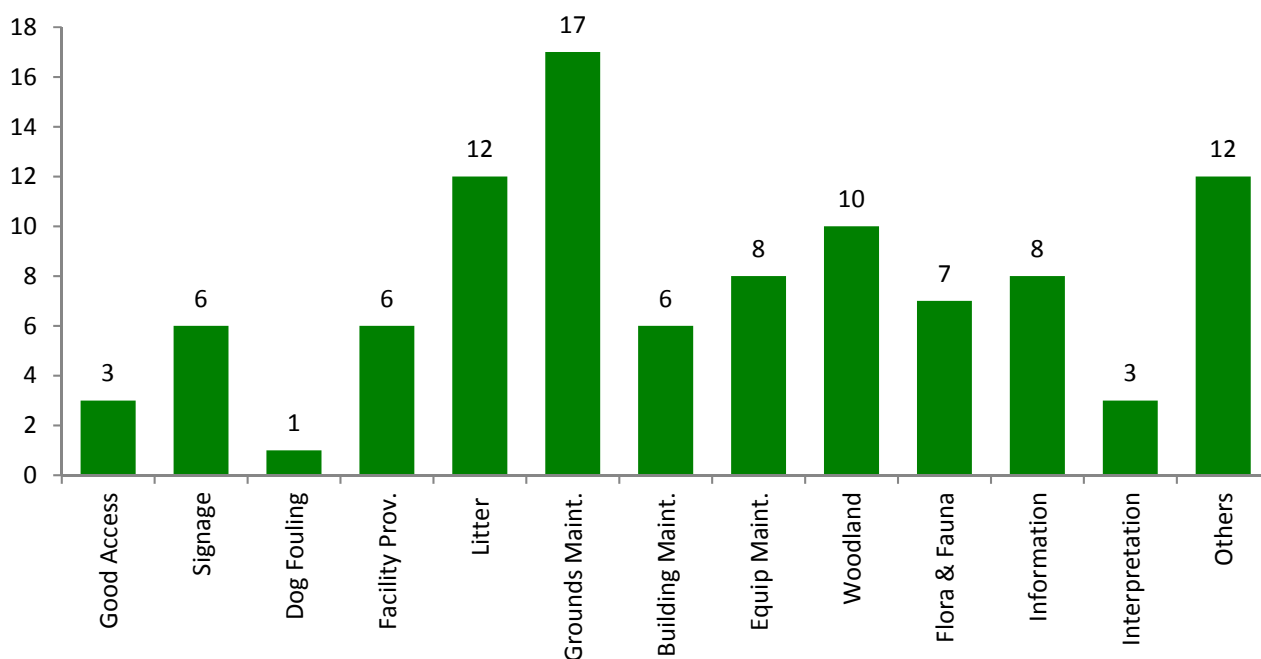
Bellevue Crescent Gardens was the most improved park in South East Edinburgh with a remarkable increase of 21 points to 63% and moving from a 'Fair' to a 'Very Good' park. Improvements in welcoming, signage and facilities were noted.



In South East Edinburgh, Nicolson Square Garden deteriorated most in 2017 with a drop in score of 7 points to 63% with broken glass, litter and anti-social behaviour witnessed.

Recommendations

Following the park assessment, judges were asked to provide three recommendations that, based on their findings, would improve the quality of the site. These recommendations were linked to one criterion so as to provide an overview of where judges thought improvements should be focused. The chart below shows the number of recommendations for each of the criteria across all parks in the locality.



4.4 South West Edinburgh

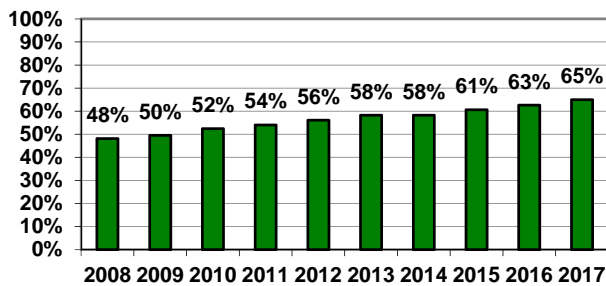
Park Name	Park Type	2013	2014	2015	2016	2017	Trend	Std Met
PENTLAND HILLS NEIGHBOURHOOD PARTNERSHIP AREA								
Blinkbonny Park	Community	V. Good	V. Good	V. Good	V. Good	V. Good	→←	Yes
Bloomiehall Park	Community	Excellent	Excellent	Excellent	Excellent	Excellent	→←	Yes
Campbell Park	Community	Good	Good	V. Good	V. Good	Excellent	↑	Yes
Colinton Dell	Natural	V. Good	V. Good	V. Good	V. Good	V. Good	→←	Yes
Colinton Mains Park	City	V. Good	V. Good	Good	V. Good	V. Good	→←	Yes
Curriemuirend Park	Community					Fair*	→←	No
Dovecot Park	Community	Good	Good	Good	Good	V. Good	↑	Yes
Fairmilehead Park	Community	V. Good	V. Good	V. Good	V. Good	Excellent	↑	Yes
KGV Park, Currie	Community	V. Good	V. Good	V. Good	V. Good	V. Good	→←	Yes
Marchbank Park	Community	V. Good	V. Good	Good	V. Good	V. Good	→←	Yes
Muirwood Road Park	Community	Excellent	Excellent	Excellent	Excellent	Excellent	→←	Yes
Pentland Regional Park	Regional	Excellent	Excellent	Excellent	Excellent	Excellent	→←	Yes
Pentland View Park	Community	V. Good	Good	V. Good	V. Good	V. Good	→←	Yes
Ratho Park	Community	V. Good	V. Good	V. Good	V. Good	V. Good	→←	Yes
Redford Wood	Natural	Fair	Fair	Fair	Good+	V. Good	↑	Yes
Spylaw Park	Community	V. Good	V. Good	Excellent	Excellent	Excellent	→←	Yes
SOUTH WEST NEIGHBOURHOOD PARTNERSHIP AREA								
Easter Craiglockhart Hill	Natural	V. Good	Excellent	Excellent	Excellent	Excellent	→←	Yes
Fountainbridge Green	Community				V. Good	Excellent	↑	Yes
Gardeners Crescent	Garden	Good	Good	V. Good	V. Good	Excellent	↑	Yes
Gorgie/Dalry Comm Park	Community	Good	Good	Good	Good	V. Good	↑	Yes
Hailes Quarry Park	Community	Excellent	Excellent	Excellent	Excellent	Excellent	→←	Yes
Harrison Park	Community	Excellent	Excellent	Excellent	Excellent	Excellent	→←	Yes
Meadowspot Park	Community	Good	Good	Good	Fair	V. Good	↑	Yes
Murieston Park	Community	V. Good	V. Good	V. Good	V. Good	V. Good	→←	Yes
Paties Road Rec. Ground	City	Good	Good	Good	Good	V. Good	↑	Yes
Redhall Park	Community	Good	Good	V. Good	V. Good	V. Good	→←	Yes
Saughton Park	Premier	Fair	Fair	Good	Good+	Good+	→←	Yes
Sighthill Park	Community	Good	V. Good	V. Good	V. Good	V. Good	→←	Yes
Stenhouse Pl. East Park	Community	Good	Fair	Good	V. Good	Good	↓	Yes
Whinhill Park	Community	Good	Good	V. Good	V. Good	V. Good	→←	Yes
White Park	Community	V. Good	V. Good	V. Good	V. Good	V. Good	→←	Yes

 = Green Flag Award Site

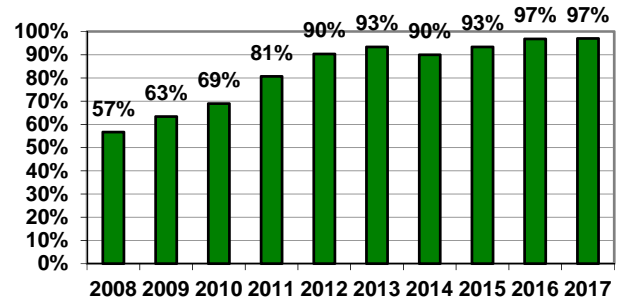
*Curriemurend last assessed in 2012 with a bandwidth of Fair.

South West Edinburgh

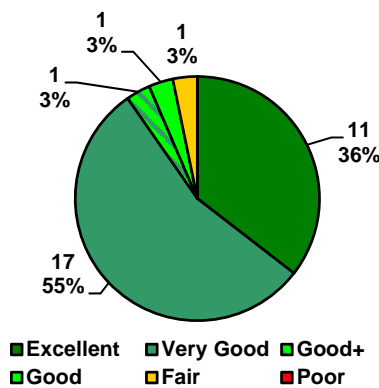
Average PQS



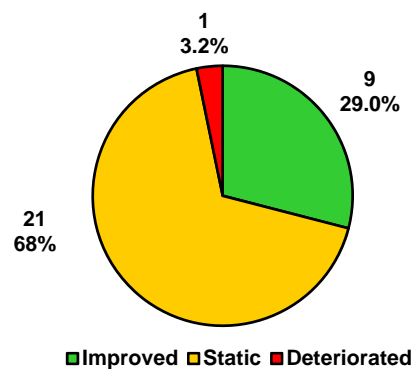
% of parks meeting Edinburgh Minimum Standard



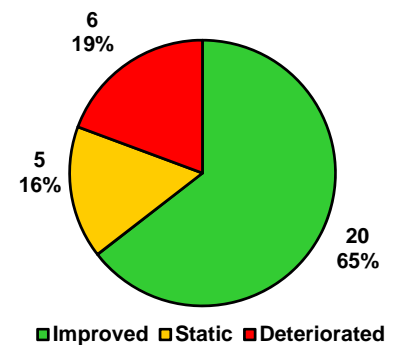
Bandwidths



Bandwidth Trend



Park Quality Scores Trend



Selected Criteria Scores Averages & Trends

South West Edinburgh Locality – 31 Parks

	2016	2017	Trend	2017 Scores		Criteria scores that		
	Avg	Avg		Min	Max	Increased	Static	Decreased
Welcoming	6.5	6.6	↑	3	9	7	20	4
Good & Safe Access	6.8	6.8	↔	4	8	6	18	7
Signage	6.2	6.4	↑	4	9	10	14	7
Safe Equipment & Facilities	6.7	6.7	↔	3	8	5	22	4
Dog Fouling	7.6	7.3	↓	3	10	11	10	10
Facility Provision	7.3	7.2	↓	2	9	7	17	7
Litter Management	7.0	7.0	↔	4	9	9	15	7
Grounds Maintenance	6.2	6.3	↑	3	8	12	12	7
Infrastructure Maintenance	6.4	6.4	↔	3	8	6	21	4
Equipment Maintenance	6.6	6.6	↔	3	8	8	18	5
Trees & Woodlands	6.5	6.9	↑	4	8	11	18	2
Conservation Flora & Fauna	6.7	6.8	↑	4	10	7	19	5
Information Provision	5.2	5.9	↑	3	9	11	18	2
Interpretative Provision	4.2	5.0	↑	1	10	13	16	2

South West Edinburgh parks ranked in order of 2017 Park Quality Score

Locality Rank	Citywide Rank	Park Name	Park Type	2016	2017	+ / - %
1	1=	Pentland Hills Regional Park	Natural	86%	85%	-1%
2	4	Easter Craiglockhart Hill	Natural	80%	80%	0%
3	13	Hailes Quarry Park	Community	70%	76%	+6%
4	17=	Colinton & C'lockhart Dells	Natural	73%	74%	+1%
5=	23=	Muir Wood Park	Community	71%	73%	+2%
5=	23=	Spylaw Park	Community	70%	73%	+3%
7=	31=	Bloomiehall Park	Community	68%	72%	+4%
7=	31=	Gardner's Crescent	Garden	69%	72%	+3%
7=	31=	Harrison Park	Community	72%	72%	0%
7=	31=	Saughton Park	Premier	72%	72%	0%
11=	55=	Fountainbridge Green	Community	64%	68%	+4%
11=	55=	Redford Wood	Natural	62%	68%	+6%
13	62=	Campbell Park	Community	62%	67%	+5%
14	66	Fairmilehead Park	Community	62%	66%	+4%
15	67=	Colinton Mains Park	City	62%	65%	+3%
16=	71=	Ratho Park	Community	64%	64%	0%
16=	71=	Redhall Park	Community	60%	64%	+4%
18=	79=	Marchbank Park	Community	56%	62%	+6%
18=	79=	Murieston Park	Community	62%	62%	0%
20	88=	King George V Park (Currie)	Community	56%	61%	+5%
21=	95=	Dovecot Park	Community	52%	60%	+8%
21=	95=	Paties Road Rec Ground	City	57%	60%	+3%
23=	106=	Blinkbonny Park	Community	57%	59%	+2%
23=	106=	White Park	Community	60%	59%	-1%
25	109=	Pentland View Park	Community	59%	58%	-1%
26	115=	Meadowspot Park	Community	44%	57%	+13%
27=	120=	Gorgie/Dalry Community Pk	Community	48%	56%	+8%
27=	120=	Sighthill Park	Community	62%	56%	-6%
29	124=	Whinhill Park	Community	59%	55%	-4%
30	130=	Stenhouse Place East Park	Community	55%	53%	-2%
31	138	Curriemuirend Park	Community	36%*	44%	+8%

*Curriemuirend last assessed in 2012 with a PQS score of 36%



Although dropping 1 point in 2017, Pentland Hills Regional Park was the joint highest scoring park in the city in along with Seven Acre Park (South East), both parks had a quality score of 85%.



Curriemuirend was last assessed in 2012 and some improvement was noted with regards to information provision but facility provision and maintenance continue to be deemed poor.

South West Edinburgh

Most improved and deteriorated South West parks



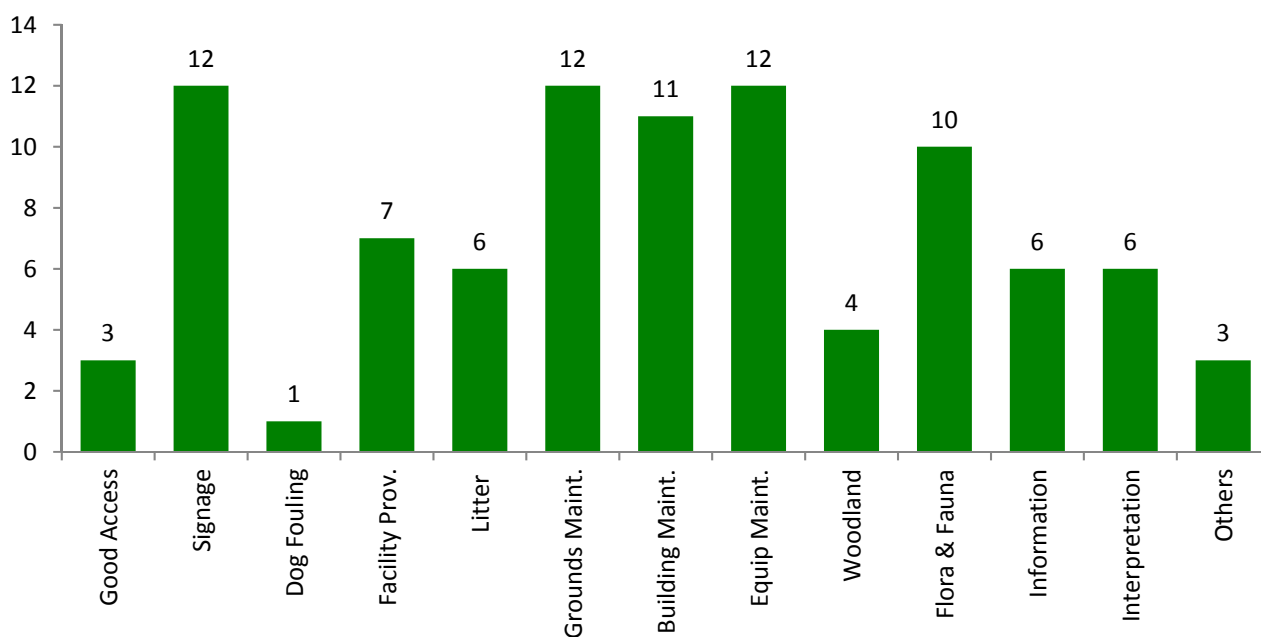
Meadowspot Park was the most improved park in the South West with an increase of 13 points to 57% points and a jump of 24 places in the citywide ranking. Improvements to welcoming, the provision of information and maintenance have helped the park improve from ‘Fair’ to ‘Very Good’.



Sighthill Park has deteriorated the most falling 6 points to 56%. Slight drops in the maintenance aspects and dog fouling were recorded.

Recommendations

Following the park assessment, judges were asked to provide three recommendations that, based on their findings, would improve the quality of the site. These recommendations were linked to one criterion so as to provide an overview of where judges thought improvements should be focused. The chart below shows the number of recommendations for each of the criteria across all parks in the locality.

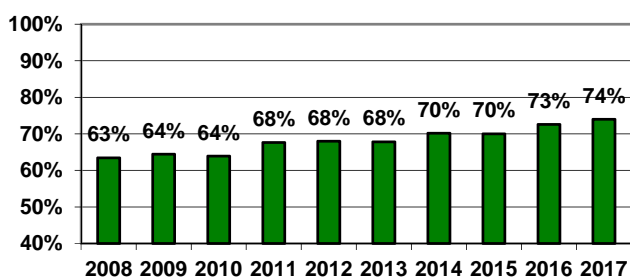


4.5 Natural Heritage Parks

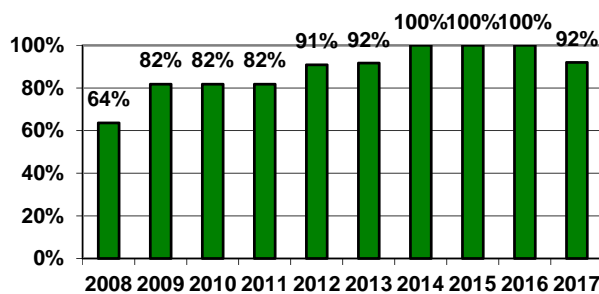
Park Name	Locality	2013	2014	2015	2016	2017	Trend	Std Met
B'house Burn Valley	South East	Good	Good+	V. Good	Good+	Good	↓	No
Cammo Estate	North West	V. Good	V. Good	V. Good	Excellent	Excellent	↔	Yes
Col & Craiglockhart Dell	South West	V. Good	V. Good	V. Good	V. Good	V. Good	↔	Yes
Corstorphine Hill	North West	Excellent	V. Good	V. Good	Excellent	Excellent	↔	Yes
Craigmillar Castle	North East	V. Good	V. Good	V. Good	V. Good	V. Good	↔	Yes
Cramond Foreshore	North West	V. Good	V. Good	V. Good	V. Good	V. Good	↔	Yes
Easter Craiglockhart Hill	South West	V. Good	Excellent	Excellent	Excellent	Excellent	↔	Yes
Hermitage & Blackford	South East	Excellent	Excellent	V. Good	Excellent	Excellent	↔	Yes
Meadows Yard	North East	Good+	V. Good	V. Good	V. Good	V. Good	↔	Yes
Pentland Hills Regional	South West	Excellent	Excellent	Excellent	Excellent	Excellent	↔	Yes
Ravelston Woods	North West	V. Good	V. Good	V. Good	V. Good	V. Good	↔	Yes
River Almond Walkway	North West	Good+	Good+	Good+	V. Good	V. Good	↔	Yes

■ = Green Flag Award Site

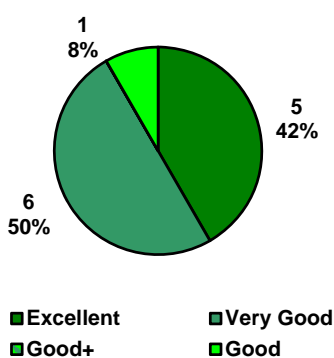
Average PQS



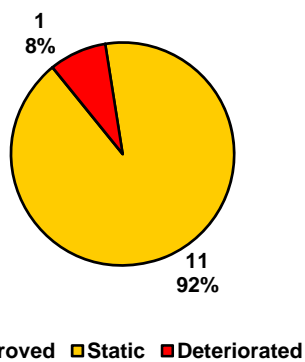
% of parks meeting Edinburgh Minimum Standard



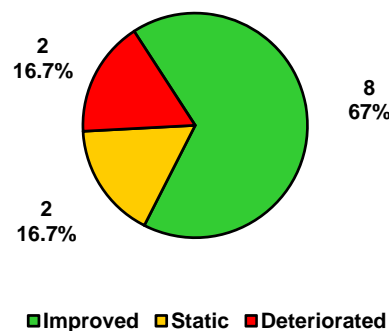
Bandwidths



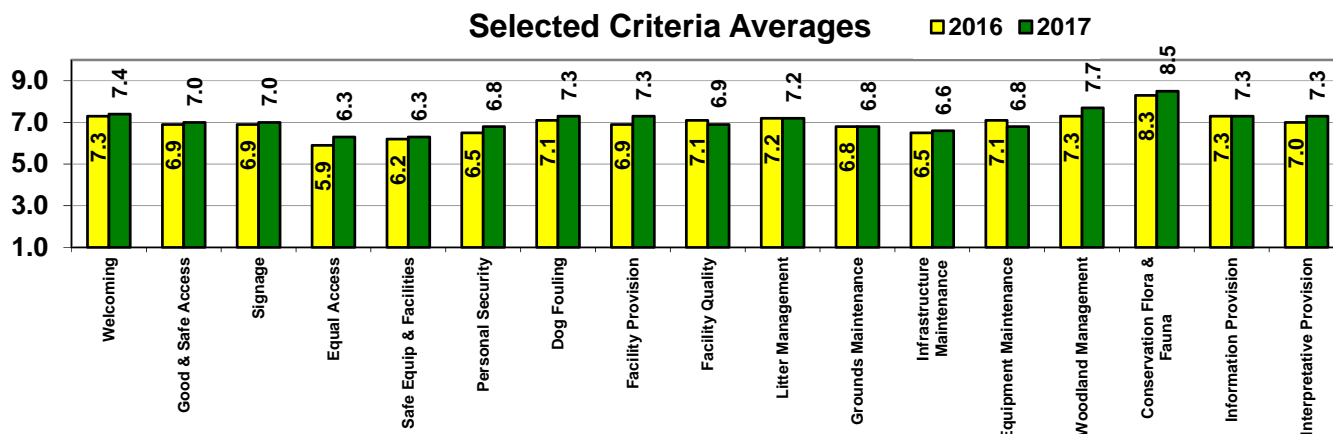
Bandwidth Trend



Park Quality Scores Trend



Selected Criteria Averages

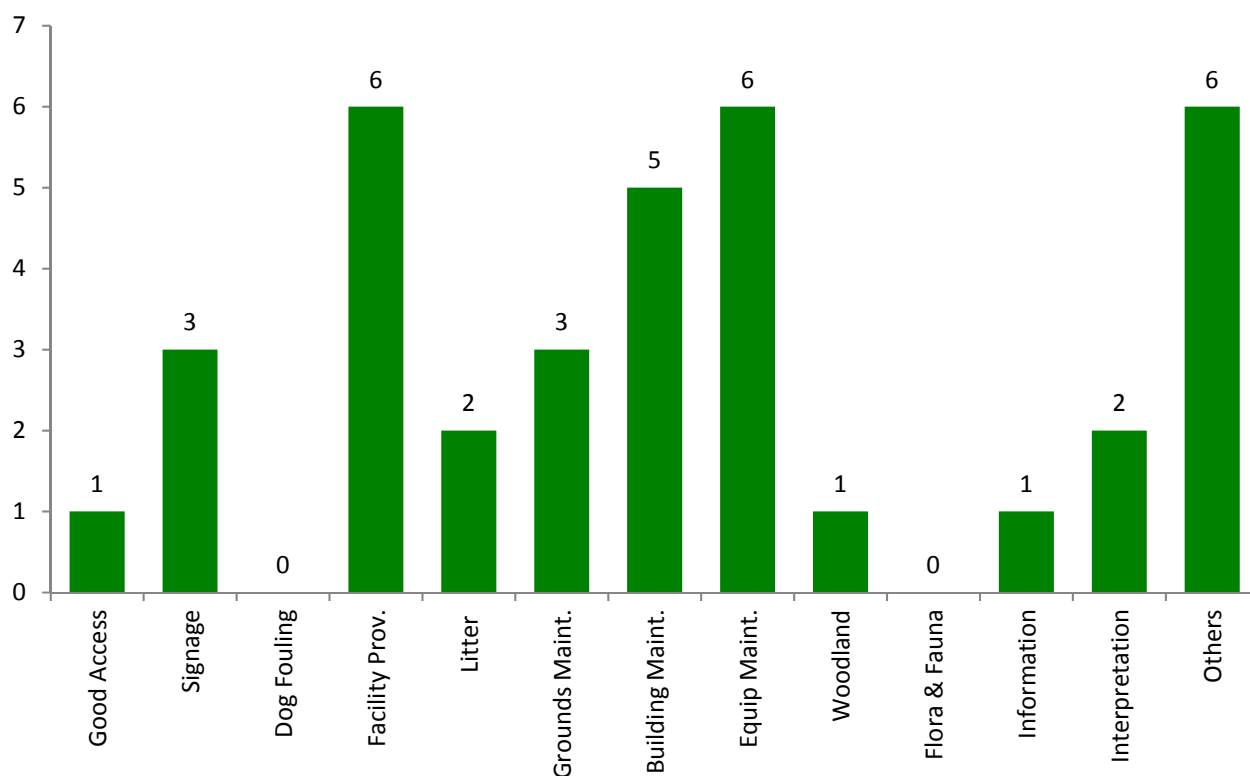


Natural Heritage Parks

Rank	Citywide Rank	Park Name	Locality	2016	2017	+ / - %
1	1	Pentland Hills Regional Park	South West	86%	85%	-1%
2	4	Easter Craiglockhart Hill	South West	80%	80%	0%
3=	6=	Cammo Estate	North West	75%	78%	+3%
3=	6	Corstorphine Hill	North West	76%	78%	+2%
5	11	H'tage of Braid inc B'ford Hill	South East	76%	77%	+1%
6	17	Colinton & Craiglockhart Dells	South West	73%	74%	+1%
7	23	Ravelston Woods	North West	70%	73%	+3%
8=	31=	C'gmillar Castle Pk inc Hawkhill	North East	68%	72%	+4%
8=	31=	Meadows Yard	North East	70%	72%	+2%
8=	31	River Almond Walkway	North West	66%	72%	+6%
11	52	Cramond Foreshore	North West	69%	69%	0%
12	120	Burdiehouse Burn Valley Park	South East	62%	56%	-6%

Recommendations

Following the park assessment judges were asked to provide three recommendations that, based on their findings, would improve the quality of the site. These recommendations were linked to one criterion so as to provide an overview of where judges thought improvements should be focused. The chart below shows the number of recommendations for each of the criteria across all parks managed by the service.



4.6 Green Flag Award Parks

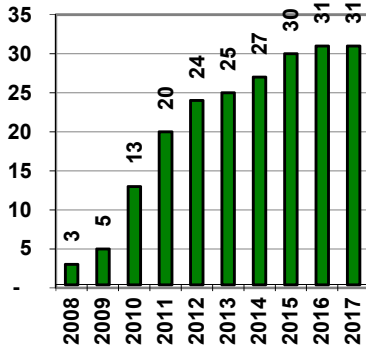
The data on this page is presented differently from the Area pages by sorting the Green Flag Award parks in quality order and showing the Park Quality Scores rather than the bandwidth. This has been done to highlight parks that could potentially slip beneath the Edinburgh Minimum Standard and/or the Green Flag Award Standard. The guide PQS score for the Green Flag Award Field Assessment Score currently sits around 66%.

City Rank	Site	Class	Loc	2013	2014	2015	2016	2017	Diff	Edin Std Met
1=	Pentland Hills Reg Park	Natural	SW	77%	75%	81%	86%	85%	-1%	Yes
1=	Seven Acre Park	Community	SE	69%	70%	72%	83%	85%	+2%	Yes
3	Starbank Park	Community	NW	55%	63%	73%	78%	83%	+5%	Yes
4	Easter Craiglockhart Hill	Natural	SW	74%	76%	75%	80%	80%	0%	Yes
5	Prestonfield Park	Community	SE	66%	66%	73%	78%	79%	+1%	Yes
6=	Corstorphine Hill	Natural	NW	75%	74%	72%	76%	78%	+2%	Yes
6=	Figgate Burn Park	Community	NE	74%	72%	73%	76%	78%	+2%	Yes
6=	Hopetoun Crescent Gardens	Garden	NE	70%	72%	72%	74%	78%	+4%	Yes
6=	Rosefield Park	Community	NE	67%	68%	71%	76%	78%	+2%	Yes
11=	Ferniehill Community Park	Community	SE	67%	70%	74%	78%	77%	-1%	Yes
11=	H'tage of Braid/B'ford Hill	Natural	SE	76%	78%	72%	76%	77%	+1%	Yes
13	Hailes Quarry Park	Community	SW	67%	67%	69%	70%	76%	+6%	Yes
14=	Morningside Park	Community	SE	71%	72%	70%	75%	75%	0%	Yes
17=	Braidburn Valley Park	Community	SE	69%	69%	68%	74%	74%	0%	Yes
17=	Portobello Com. Garden	Community	NE	70%	72%	68%	72%	74%	+2%	Yes
23=	Inverleith Park	Premier	NW	70%	69%	71%	73%	73%	0%	Yes
23=	Lochend Park	Community	NE	65%	67%	69%	73%	73%	0%	Yes
23=	Muir Wood Park	Community	SW	67%	67%	70%	71%	73%	+2%	Yes
23=	Ravelston Woods	Natural	NW	67%	72%	68%	70%	73%	+3%	Yes
23=	Spylaw Park	Community	SW	57%	62%	66%	70%	73%	+3%	Yes
31=	Craigmillar Castle Park	Natural	NE	69%	71%	68%	68%	72%	+4%	Yes
31=	Harrison Park	Community	SW	72%	73%	73%	72%	72%	0%	Yes
31=	London Road Gardens	City	SE	62%	61%	68%	67%	72%	+5%	Yes
31=	Station Road Park	Community	NW	59%	66%	69%	68%	72%	+4%	Yes
31=	Victoria Park	City	NW	70%	67%	69%	73%	72%	-1%	Yes
50=	Princes Street Gardens	Premier	SE	72%	70%	73%	73%	70%	-3%	Yes
52=	Ravelston Park	Community	NW	72%	73%	71%	70%	69%	-1%	Yes
55=	Ferry Glen & Back Braes	Natural	NW	60%	56%	60%	60%	68%	+8%	Yes
55=	St Margaret's Park	Community	NW	70%	70%	71%	71%	68%	-3%	Yes
62=	King George V Pk (Eyre Pl.)	City	NW	66%	65%	68%	70%	67%	-3%	Yes
120=	Burdiehouse Burn Valley Pk	Natural	SE	56%	63%	66%	62%	56%	-6%	No

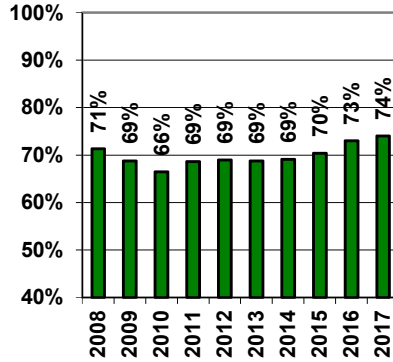
* The number of official Green Flag Award parks in Edinburgh differs from the totals shown on these pages due to Ravelston Park & Woods being split in 2013 for Park Quality Assessment purposes.

Green Flag Award Parks

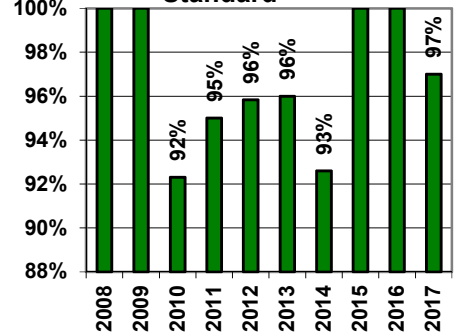
Number of Green Flag Parks *



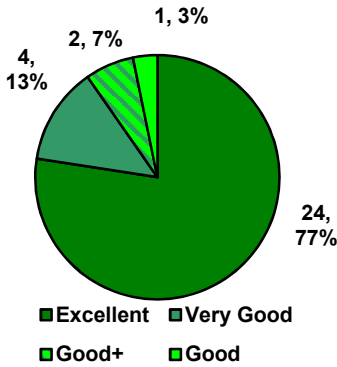
Average PQS



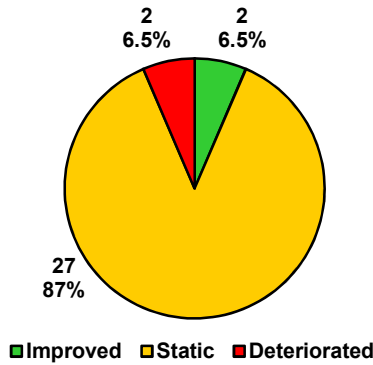
% of sites meeting Edinburgh Minimum Standard



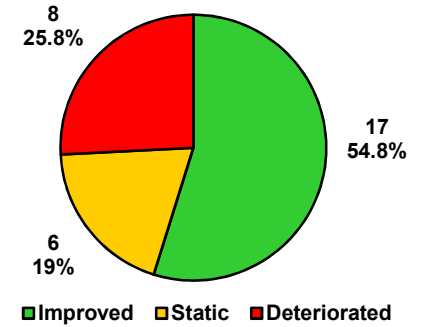
Bandwidths



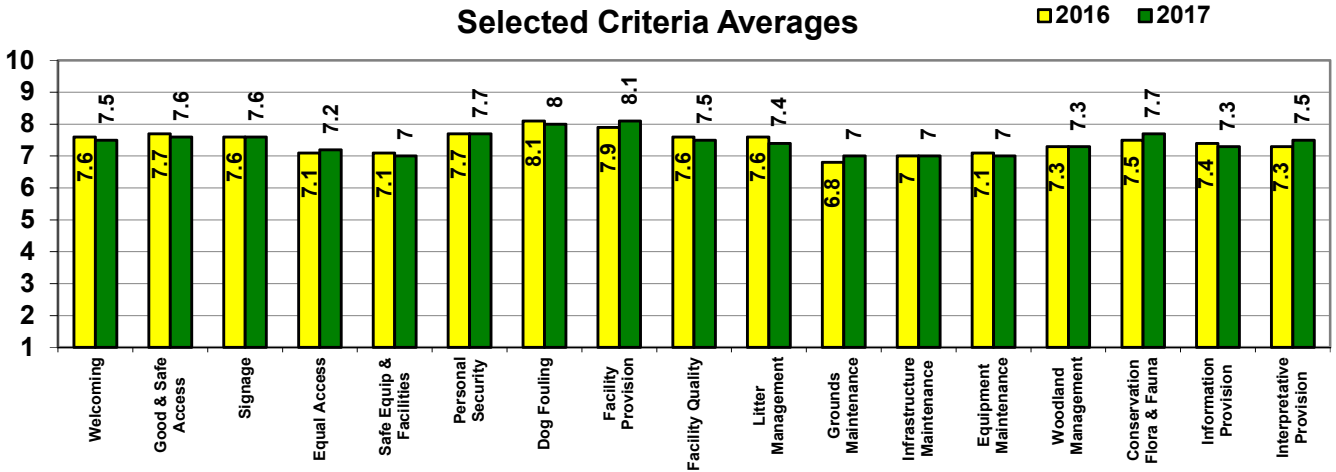
Bandwidth Trend



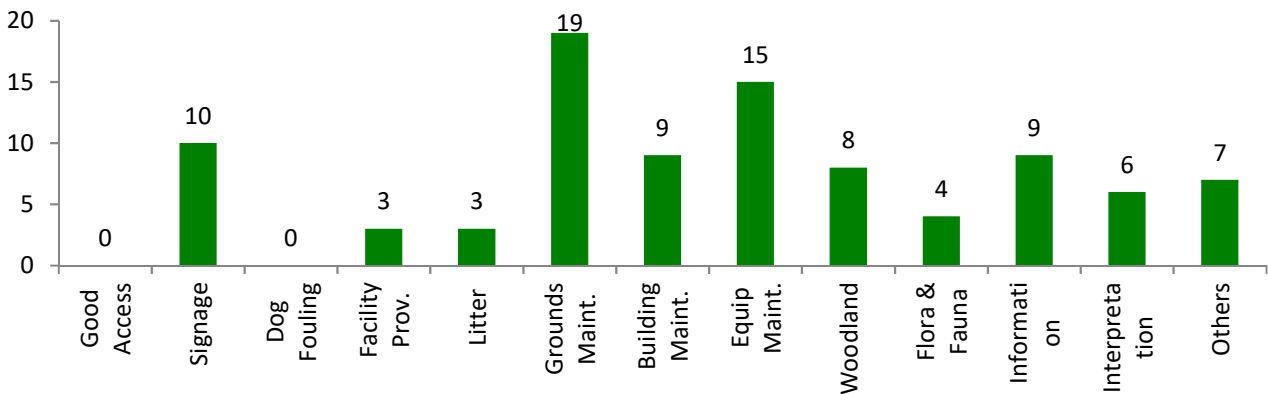
Park Quality Scores Trend



Selected Criteria Averages



Recommendations



5 Citywide Results

5.1 Listed below are all sites listed in quality order.

Rank	Park Name	Park Type	Locality	2016	2017	+ / -%	+ / -Rk
1=	Pentland Hills Regional Park	Natural	South West	86%	85%	-1%	0
1=	Seven Acre Park	Community	South East	83%	85%	+2%	+1
3	Starbank Park	Community	North West	78%	83%	+5%	+1
4	Easter Craiglockhart Hill	Natural	South West	80%	80%	0%	-1
5	Prestonfield Park	Community	South East	78%	79%	+1%	-1
6=	Cammo Estate	Natural	North West	75%	78%	+3%	+5
6=	Corstorphine Hill	Natural	North West	76%	78%	+2%	+1
6=	Figgate Burn Park	Community	North East	76%	78%	+2%	+1
6=	Hopetoun Crescent Gardens	Garden	North East	74%	78%	+4%	+8
6=	Rosefield Park	Community	North East	76%	78%	+2%	+1
11=	Ferniehill Community Park	Community	South East	78%	77%	-1%	-7
11=	H'age of Braid / Blackford Hill	Natural	South East	76%	77%	+1%	-4
13	Hailes Quarry Park	Community	South West	70%	76%	+6%	+22
14=	Dunbar's Close Garden	Garden	South East	71%	75%	+4%	+17
14=	Morningside Park	Community	South East	75%	75%	0%	-3
14=	The Meadows & B'field Links	Premier	South East	73%	75%	+2%	+3
17=	Bauks View	Natural	South East	74%	74%	0%	-3
17=	Braidburn Valley Park	Community	South East	74%	74%	0%	-3
17=	Colinton & C'lockhart Dells	Natural	South West	73%	74%	+1%	0
17=	Davidson's Mains Park	City	North West	66%	74%	+8%	+36
17=	Portobello Community Gdn	Community	North East	72%	74%	+2%	+8
17=	St Katharine's Park	Community	South East	73%	74%	+1%	0
23=	Calton Hill	Premier	South East	58%	73%	+15%	+78
23=	Inverleith Park	Premier	North West	73%	73%	0%	-6
23=	Lauriston Castle	Garden	North West	70%	73%	+3%	+12
23=	Lochend Park	Community	North East	73%	73%	0%	-6
23=	Muir Wood Park	Community	South West	71%	73%	+2%	+8
23=	Pilrig Park	Community	North East	57%	73%	+16%	+84
23=	Ravelston Woods	Natural	North West	70%	73%	+3%	+12
23=	Spylaw Park	Community	South West	70%	73%	+3%	+12
31=	Bloomiehall Park	Community	South West	68%	72%	+4%	+16
31=	Braid Hills	Natural	South East	71%	72%	+1%	0
31=	Craigmillar Castle Park	Natural	North East	68%	72%	+4%	+16
31=	Gardner's Crescent	Garden	South West	69%	72%	+3%	+13
31=	Harrison Park	Community	South West	72%	72%	0%	-6
31=	London Road Gardens	City	South East	67%	72%	+5%	+21
31=	Meadows Yard	Natural	North East	70%	72%	+2%	+4
31=	Morgan Playing Fields	Recreation	South East	72%	72%	0%	-6
31=	Prestonfield War Memorial	Garden	South East	75%	72%	-3%	-20
31=	Regent Road Park	Community	South East	62%	72%	+10%	+38
31=	River Almond Walkway	Natural	North West	66%	72%	+6%	+22
31=	Saughton Park	Premier	South West	72%	72%	0%	-6
31=	Station Road Park	Community	North West	68%	72%	+4%	+16
31=	Victoria Park	City	North West	73%	72%	-1%	-14
45=	Abercorn Park	Community	North East	69%	71%	+2%	-1
45=	Inch Park	City	South East	72%	71%	-1%	-20
45=	Newcraighall Park	Community	North East	66%	71%	+5%	+8

Rank	Park Name	Park Type	Locality	2016	2017	+ / -%	+ / -Rk
45=	Rocheid Path	Natural	North West	72%	71%	-1%	-20
45=	St Patrick's Square	Garden	South East	73%	71%	-2%	-28
50=	Hillside Crescent Gardens	Garden	North East	63%	70%	+7%	+12
50=	Princes Street Gardens	Premier	South East	73%	70%	-3%	-33
52=	Cramond Foreshore	Natural	North West	69%	69%	0%	-8
52=	Liberton Park	Community	South East	70%	69%	-1%	-17
52=	Ravelston Park	Community	North West	70%	69%	-1%	-17
55=	Atholl Crescent	Garden	South East	56%	68%	+12%	+58
55=	Coates Crescent	Garden	South East	53%	68%	+15%	+73
55=	Deaconess	Garden	South East	68%	68%	0%	-8
55=	Ferry Glen & Back Braes	Natural	North West	60%	68%	+8%	+29
55=	Fountainbridge Green	Community	South West	64%	68%	+4%	+3
55=	Redford Wood	Natural	South West	62%	68%	+6%	+14
55=	St Margaret's Park	Community	North West	71%	68%	-3%	-24
62=	Brunstane Mill	Natural	North East	61%	67%	+6%	+18
62=	Campbell Park	Community	South West	62%	67%	+5%	+7
62=	Drum Park	Community	South East	68%	67%	-1%	-15
62=	King George V Pk (Eyre Place)	City	North West	70%	67%	-3%	-27
66	Fairmilehead Park	Community	South West	62%	66%	+4%	+3
67=	Brighton Park	Community	North East	63%	65%	+2%	-5
67=	Colinton Mains Park	City	South West	62%	65%	+3%	+2
67=	Gypsy Brae Rec Ground	City	North West	65%	65%	0%	-11
67=	Leith Links	Premier	North East	63%	65%	+2%	-5
71=	Gracemount Community Pk	Community	South East	63%	64%	+1%	-9
71=	Montgomery Street Park	Community	North East	65%	64%	-1%	-15
71=	Ratho Park	Community	South West	64%	64%	0%	-13
71=	Redhall Park	Community	South West	60%	64%	+4%	+13
75=	Bellevue Crescent Gardens	Garden	South East	42%	63%	+21%	+65
75=	Buttercup Farm Park	Community	North West	63%	63%	0%	-13
75=	Nicolson Square	Garden	South East	70%	63%	-7%	-40
75=	Orchard (Brae) Park	Community	North West	63%	63%	0%	-13
79=	Allison Park	Community	North West	62%	62%	0%	-10
79=	Easter Drylaw Park	Community	North West	58%	62%	+4%	+22
79=	Gayfield Square	Garden	South East	52%	62%	+10%	+51
79=	Gyle Park	City	North West	64%	62%	-2%	-21
79=	Inchcolm Park, S Queensferry	Community	North West	61%	62%	+1%	+1
79=	Joppa Quarry Park	Community	North East	58%	62%	+4%	+22
79=	Marchbank Park	Community	South West	56%	62%	+6%	+34
79=	Meadowfield Park	Community	North East	64%	62%	-2%	-21
79=	Murieston Park	Community	South West	62%	62%	0%	-10
88=	Cramond Walled Garden	Garden	North West	58%	61%	+3%	+13
88=	Dalmeny Street Park	Community	North East	54%	61%	+7%	+32
88=	Drumbrae Park	Community	North West	60%	61%	+1%	-4
88=	Haugh Park	Community	North West	59%	61%	+2%	+7
88=	King George V Park (Currie)	Community	South West	56%	61%	+5%	+25
88=	Mortonhall Community Park	Community	South East	58%	61%	+3%	+13

Rank	Park Name	Park Type	Locality	2016	2017	+ / -%	+ / -Rk
88=	Straiton Place Park	Community	North East	63%	61%	-2%	-26
95=	Baronscourt Park	Community	North East	59%	60%	+1%	0
95=	Bingham Park	Community	North East	54%	60%	+6%	+25
95=	Dovecot Park	Community	South West	52%	60%	+8%	+35
95=	Dundas Park	Community	North West	59%	60%	+1%	0
95=	East Pilton Park	Community	North West	62%	60%	-2%	-26
95=	Granny's Green	Garden	South East	58%	60%	+2%	+6
95=	Hunters Hall Park (JKC)	City	North East	60%	60%	0%	-11
95=	Paties Road Rec Ground	City	South West	57%	60%	+3%	+12
95=	Ratho Station Park	Community	North West	60%	60%	0%	-11
95=	Taylor Gardens	Garden	North East	60%	60%	0%	-11
95=	West Pilton Park	Community	North West	54%	60%	+6%	+25
106=	Blinkbonny Park	Community	South West	57%	59%	+2%	+1
106=	Fernieside Rec Ground	Recreation	South East	62%	59%	-3%	-37
106=	White Park	Community	South West	60%	59%	-1%	-22
109=	Jewel Park	Community	North East	57%	58%	+1%	-2
109=	Magdalene Glen	Community	North East	54%	58%	+4%	+11
109=	Moredun Park	Community	South East	61%	58%	-3%	-29
109=	Pentland View Park	Community	South West	59%	58%	-1%	-14
109=	Roseburn Park	City	North West	59%	58%	-1%	-14
109=	St Mark's Park	Community	North East	56%	58%	+2%	+4
115=	Fauldburn Park	Community	North West	60%	57%	-3%	-31
115=	King George V Park (S.Q)	Community	North West	57%	57%	0%	-8
115=	Meadowspot Park	Community	South West	44%	57%	+13%	+24
115=	Parkside, Newbridge	Community	North West	60%	57%	-3%	-31
115=	Union Park	City	North West	54%	57%	+3%	+5
120=	Burdiehouse Burn Valley Pk	Natural	South East	62%	56%	-6%	-51
120=	Glendevon Park	Community	North West	56%	56%	0%	-7
120=	Gorgie/Dalry Community Pk	Community	South West	48%	56%	+8%	+14
120=	Sighthill Park	Community	South West	62%	56%	-6%	-51
124=	Balgreen Park	Community	North West	60%	55%	-5%	-40
124=	Granton Crescent Park	Community	North West	57%	55%	-2%	-17
124=	Whinhill Park	Community	South West	59%	55%	-4%	-29
127=	Clermiston Park	Community	North West	60%	54%	-6%	-43
127=	Muirhouse Linear Park	Community	North West	54%	54%	0%	-7
127=	Redbraes Park	Community	North East	54%	54%	0%	-7
130=	Ratho Station Flyover Park	Recreation	North West	46%	53%	+7%	+8
130=	Stenhouse Place East Park	Community	South West	55%	53%	-2%	-12
132=	Cairntows Park	Community	North East	48%	52%	+4%	+2
132=	Keddie Park	Community	North East	53%	52%	-1%	-4
134	Seafield Recreation Ground	Recreation	North East	51%	51%	0%	-2
135	Riverside Park	Community	North West	54%	50%	-4%	-15
136=	Hays Park	Community	North East	48%	49%	+1%	-2
136=	Silverknowes Park	Recreation	North West	49%	49%	0%	-3
138	Curriemuirend Park	Community	South West	36%	44%	+8%	0
139	Henderson Gardens Park	Community	North East	42%	40%	-2%	+1

5.2 Listed below are sites that have improved and deteriorated the most based on the difference in PQA score between 2016 and 2017.

Most Improved

Park Name	Park Type	Locality	PQA 2016	PQA 2017	+ / - %	+ / - Rank
Bellevue Crescent	Garden	South East	42%	63%	+21%	+65
Pilrig Park	Community	North East	57%	73%	+16%	+84
Coates Crescent	Garden	South East	53%	68%	+15%	+73
Calton Hill	Premier	South East	58%	73%	+15%	+78
Meadowspot Park	Community	South West	44%	57%	+13%	+24

Most Deteriorated

Park Name	Park Type	Locality	PQA 2016	PQA 2017	+ / - %	+ / - Rank
Nicolson Square	Garden	South East	70%	63%	-7%	-40
Burdiehouse Burn	Natural	South East	62%	56%	-6%	-51
Sighthill Park	Community	South West	62%	56%	-6%	-51
Clermiston Park	Community	North West	60%	54%	-6%	-43
Balgreen Park	Community	North West	60%	55%	-5%	-40

Bellevue Crescent Gardens ↑



Judges' comments: A small haven from adjacent traffic with new seating and signage added. Bird boxes and naturalised grass provide some good habitat. The notice board displays interesting, useful and relevant information about the park and biodiversity. A previously sterile area is becoming more usable with each addition.

Pilrig Park ↑



Judges' comments: A pleasant space that is a stone's throw from Leith Walk. A well-used open space with a good path network and good facilities. Signage and notice board with sufficient information. Community involvement is very good with a Friends group that is very active, running events and seeking funding. The park is also used by Forest Schools.

Judges' comments: Open and well signed with good views into and around the site but slightly unwelcoming due to people drinking alcohol and taking up most of the park. Good bin provision but quite a bit of litter and broken glass. Park would benefit from more seating but this might only encourage more anti social behaviour. Good up to date information present in the notice board and floral identification sheet.

↓ **Nicolson Square Gardens**



↓ **Burdiehouse Burn Valley Park**

Judges' comments: Attractive entrance at Gilmerton but most others generally poor. Arson, fouling and motorbike use very evident even though the site has some good dog fouling and anti-motorbike campaigns led by an active Friend's group. Seating in mostly reasonable condition but some play equipment is badly damaged by fire and there is lots of litter and broken glass. There is a good path network but some sections in need of repair and improved signage.



5.3 Summary of Results

Bandwidths

Of Edinburgh's 139 parks that were assessed in 2017, 99% are now judged to be 'Good' or better leaving only two parks classed as 'Fair'. Further to this, 86% of parks are now classed as 'Excellent' or 'Very Good' up from 74% in 2016. For the third year running no parks were judged to be 'Poor'.

The results also showed that 31 parks (22%) moved up a bandwidth whilst 101 parks (73%) stayed the same and only seven parks (5%) dropped a bandwidth.

All the parks in the North West and South East localities were judged to be 'Good' or better. Over 90% of parks in the South East and South West were deemed 'Excellent' or 'Very Good', whilst 84% of parks in the North West and 81% in the North East were similar.

The South West and South East had the most parks (9 each) improving a bandwidth in 2017 but the South East also had the most (3) dropping a bandwidth too.

Park Quality Scores

Although bandwidths reflect a description of a park's quality and take into account the natural variance of judges' scoring and that certain aspects of parks' quality can change on a daily basis, it can be interesting to explore a little deeper into Park Quality Scores (PQS).

The majority of parks continue to improve and it is noted that 77 (55%) parks improved on the previous assessment score. Unfortunately, 36 (26%) of Edinburgh's parks also fell in quality, up from the 20% that did in 2016. The North East had the most number of parks (22) increasing and the locality also had least number of parks (5) decreasing in score. The South West was not far behind with 20 improving and six falling. The North West and South East each saw a third of their parks fall in score but the South East saw over half improve.

The average PQS continues to increase year on year with all localities seeing an improvement. The average Park Quality Score of an Edinburgh park now stands at 65%, increasing from 63% in the previous year and in the ten years of park assessments, the average score has risen by 16 points.

The Pentland Hills Regional Park continues to score highly and this year it was joined by Seven Acre Park at the top of the list, each scoring 85%. With Bellevue Crescent propping up the table in 2016 it was good to note that it was the most improved park in 2017 with a rise of 21 points and 65 places in the citywide ranking. Unfortunately, Henderson Gardens continue to struggle by dropping 2 points to 40% and claiming bottom place in the table. Nicolson Square deteriorated the most in 2017 dropping 7 points, but perhaps more concerning is Burdiehouse Burn Valley Park which has shown a drop in score of 6 points to 56% and could be in danger of falling beneath the Green Flag Award Standard.

Edinburgh Minimum Standard

In 2017, 135 (97%) parks across the city met the Edinburgh Minimum Standard leaving only four that failed to reach the mark. In total three parks improved sufficiently from last year to reach the mark whilst one park slipped backwards.

The number of parks can vary slightly and this can impact on the percentage of parks meeting the standard, the number of parks reaching the mark can also look similar to last year but as listed below we can see that there were a few 'movers'.

The South West (30/31; 97%) did well to bring a park back up to standard and the park that dropped off the list had also met the standard the previous year but the locality also re-instated a park to the assessment list that failed to meet the standard so ended up with the same number and percentage.

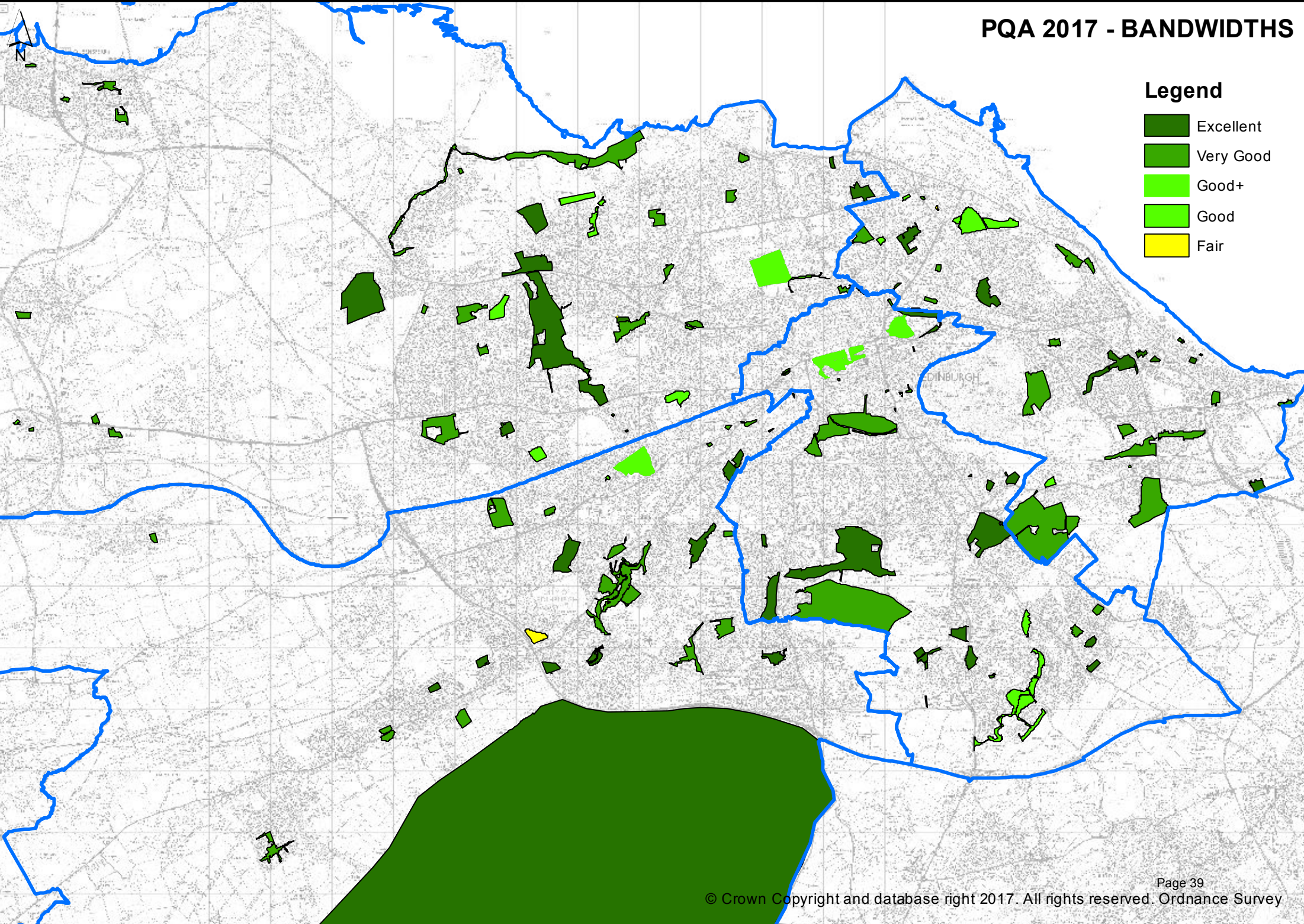
The North West (43/43; 100%) have the same number of parks meeting the standard as they did last year but removed a park from the list that didn't meet the standard in 2016, therefore 100% of parks now meet the mark.

The South East (32/33; 97%) improved two parks to meet the standard but unfortunately one park also slipped below the mark.

The North East (30/32; 94%) removed a park that had previously reached the standard so the number is one less than last year but the percentage is the same.

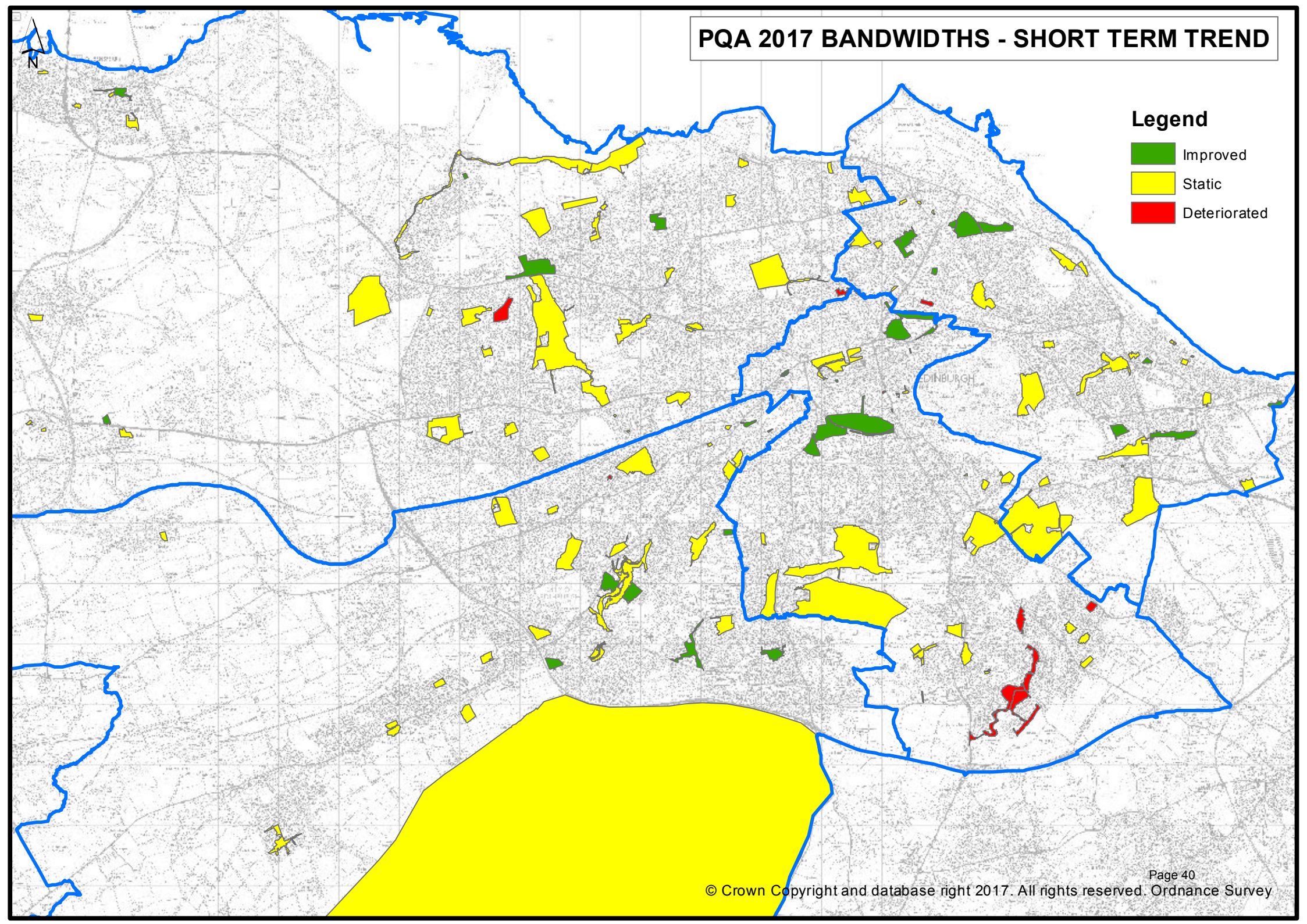
Legend

- Excellent
- Very Good
- Good+
- Good
- Fair

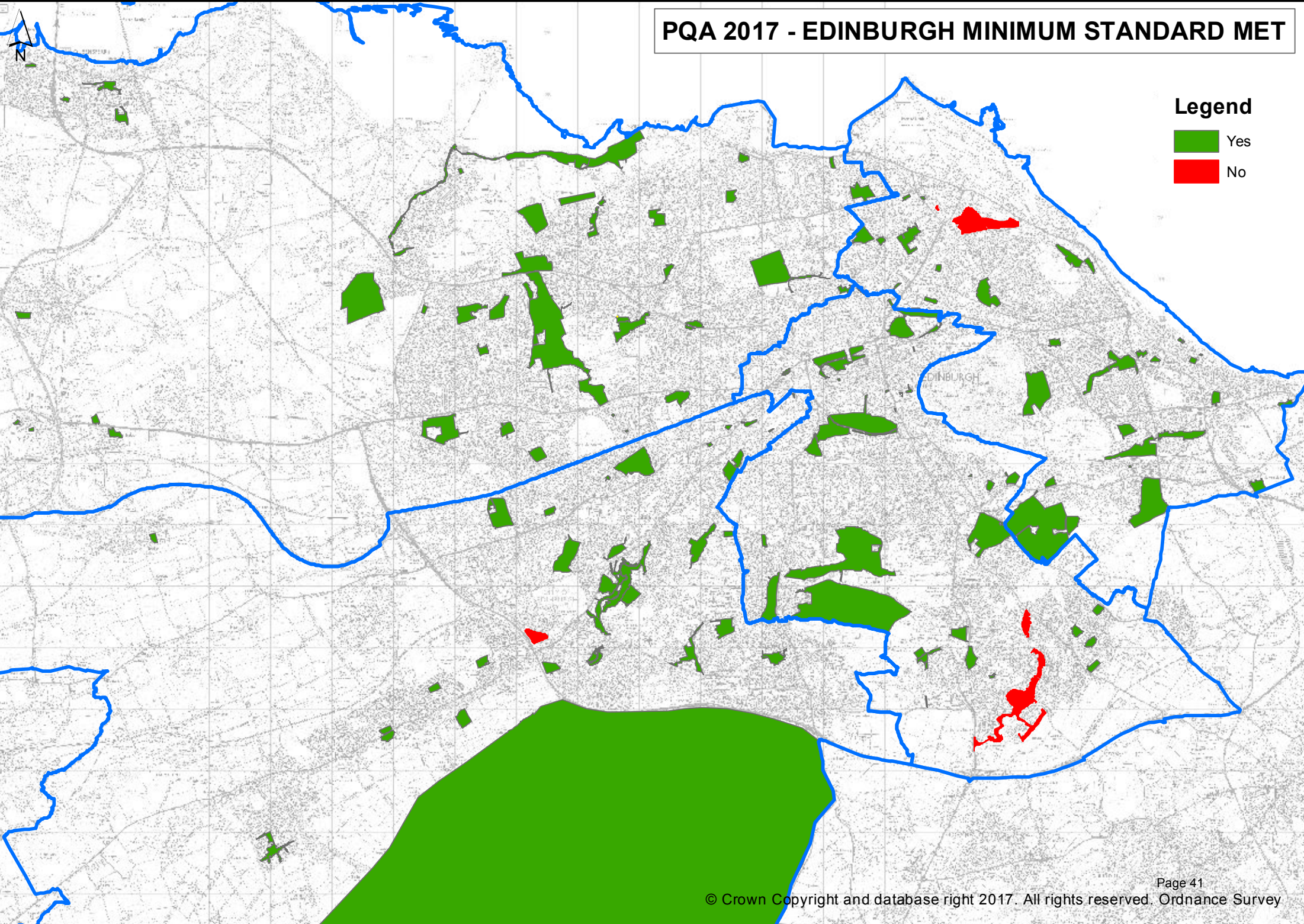


PQA 2017 BANDWIDTHS - SHORT TERM TREND

- Legend**
- Improved
 - Static
 - Deteriorated



PQA 2017 - EDINBURGH MINIMUM STANDARD MET



Legend

- Yes
- No

5.5 Criteria Scoring Statistics

	2016	2017	Trend	2017 Scores		Criteria scores changes		
	Avg	Avg		Min	Max	Increased	Static	Decreased
Welcoming	6.4	6.4	↔	3	9	25	86	28
Good & Safe Access	6.7	6.7	↔	2	9	23	89	27
Signage	6.4	6.5	↑	3	9	35	78	26
Equal Access	6.1	6.2	↑	2	9	30	89	20
Safe Equipment & Facilities	6.7	6.7	↔	3	9	25	87	27
Personal Security	7.2	7.1	↓	3	9	19	100	20
Dog Fouling	7.7	7.4	↓	1	10	35	55	49
Facility Provision	7.1	7.2	↑	2	9	28	90	21
Quality of Facilities	7.1	7.1	↔	3	9	24	98	17
Litter Management	6.7	6.6	↓	2	10	36	54	49
Grounds Maintenance	6.2	6.2	↔	2	9	44	59	36
Infrastructure Maintenance	6.4	6.5	↑	3	9	32	79	28
Equipment Maintenance	6.6	6.7	↑	3	9	27	93	19
Environmental Sustainability	6.2	6.3	↑	6	9	11	127	1
Pesticide Use	5.3	6.3	↑	4	10	59	74	6
Peat Use	9.5	9.6	↑	7	10	5	134	0
Waste Minimisation	3.9	5.3	↑	2	9	62	77	0
Trees & Woodlands	6.7	6.9	↑	4	9	36	89	14
Conservation Flora & Fauna	6.5	6.6	↑	2	10	37	82	20
Conservation Landscape	6.0	6.2	↑	2	10	8	130	1
Conservation Buildings	6.5	6.8	↑	4	9	14	118	7
Community Involvement	5.2	5.6	↑	1	10	38	92	9
Community Provision	6.2	6.3	↑	6	10	13	126	0
Marketing & Promotion	5.7	5.9	↑	3	10	17	118	4
Information Provision	5.6	5.8	↑	1	9	34	77	28
Interpretative Provision	4.7	5.2	↑	1	10	43	83	13

5.6 Summary of Criteria Scoring

Citywide, 17 out of 26 criteria average scores improved whilst only **Personal Security**, **Dog Fouling** and **Litter Management** fell. There were good increases in **Information Provision** and **Educational and Interpretative Provision**.



Easter Craiglockhart Hill



Colinton Mains Park



Figgate Park

A Welcoming Place: Citywide and all localities saw average scores rise in **Signage**, especially in South East Edinburgh. **Equal Access** also rose slightly whilst **Good & Safe Access** and **Welcoming** remained the same as 2016. North West and South East **Welcoming** scores fell whilst North East and South West improved.

Healthy, Safe & Secure: Citywide, **Quality of Facilities** score remained the same as 2016 but there was a small increase in **Appropriate Provision of Facilities** with all localities except South West improving their scores in both. **Personal Security** dropped in score slightly and after a few years of improving scores, **Dog Fouling** scores also fell across the city and all localities.

Clean & Well Maintained: Citywide, **Grounds Maintenance** remained static for the third year running but there were small increases noted in North East & South West. **Litter Management** fell for the first time and locally the North East saw a big drop in score whereas the South East saw a rise with North West & South West remaining the same. **Building and Infrastructure Maintenance** and **Equipment Maintenance** both saw small rises and it was the North East this time that saw the only increases in both.

Sustainability: All criteria in this category saw citywide rises in average scores with particularly significant improvements in **Waste Minimisation** and **Pesticide Use**. All localities also saw rises or remained the same as last year in each of the criteria. **Woodland Management** also saw a good increase citywide from last year with the South West improving the most across the localities. The criteria included here are partly of a strategic nature except **Woodland Management** and are therefore scored by site managers themselves using guidance and by providing supporting evidence. It should be noted that ‘Pesticide Use’ is scored by looking at the decision by managers to reduce the amount of chemical in parks with a view to its eradication.

Conservation & Heritage: Again, all criteria in this category saw scores rise citywide with most localities following suit. **Conservation of Flora & Fauna** saw a small rise to continue its improving trend citywide and across all localities.

Community Involvement: Scores are again proposed by site managers in this category and it’s clear that **Community Involvement** is improving across all localities as well as citywide with very good increases recorded this year. It is noted that involvement is particularly strong in a number of parks but the average score of 5.6 is the third lowest across all criteria and is perhaps reflective of the number of parks having no or little involvement.

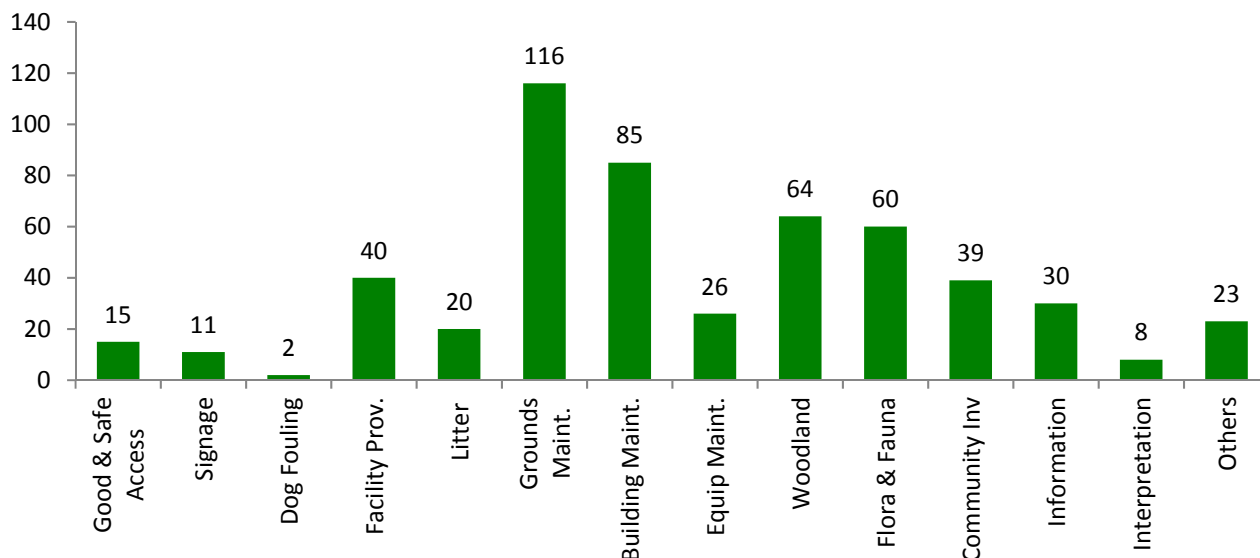
Marketing: **Marketing** saw another increase proposed by managers due to improvements in web pages, social media and publications. Site accessible **Information Provision** has also improved citywide and across the South East and South West Localities. **Education & Interpretative Provision** continues to improve also and results showed a very good increase across the city and all the localities except North East where a small drop in score was recorded. The average score for **Education & Interpretative Provision** of 5.2 is the lowest of the 26 criteria averages.

5.7 Site Improvements & Recommendations

Improvements since last year

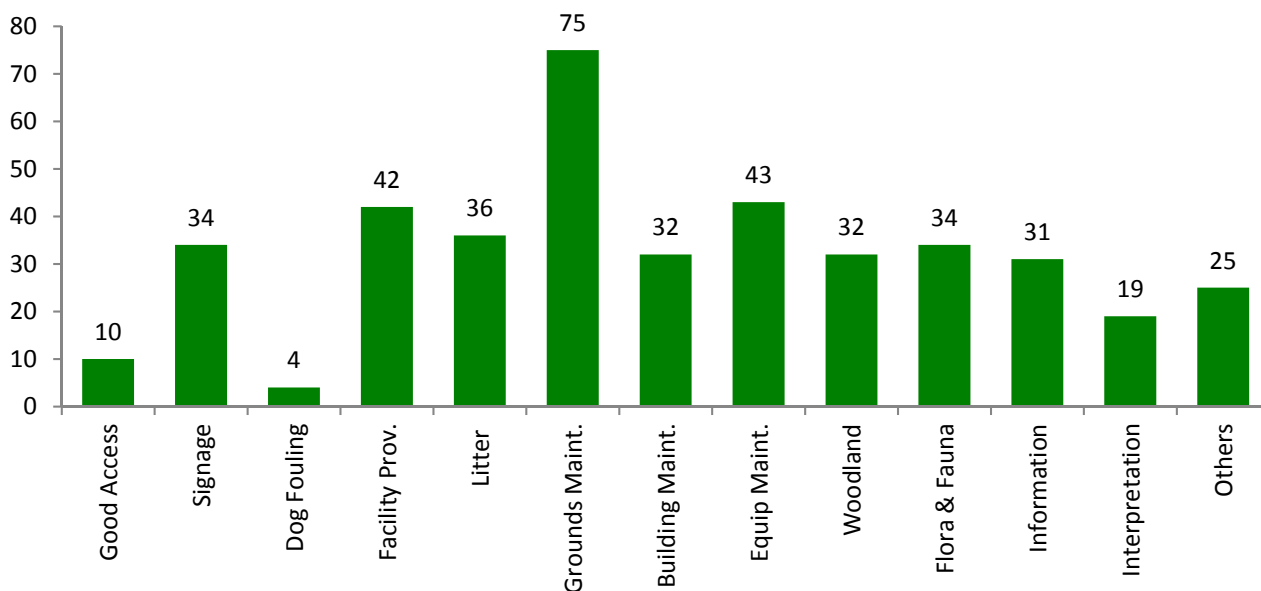
Prior to this year’s assessments, site managers were asked to provide an update with regards to improvements that had taken place in their parks since the last PQA assessment. Each improvement was then aligned to one Green Flag criterion resulting in the ability to provide an overview as to where improvements had been targeted across the city.

The chart below shows the number of actions for each of the criteria.



Recommendations

Following the park assessments, judges were asked to provide three recommendations that, based on their findings, would improve the quality of the site. These recommendations were linked to one criterion so as to provide an overview of where judges thought improvements should be focused. The chart below shows the number of recommendations for each of the criteria across all parks.



5.8 Park Improvement & Management Plans

Improvement actions can be identified for parks through various sources and the annual Park Quality Assessments provide the site manager with information on the quality of their parks that can be used to identify areas for improvement or promotion. There is also information available following the publication of the PQA report that allows managers to identify improvements across areas or citywide i.e. dog fouling campaigns.

It is hoped that managers use all the available information including the judge's recommendations to create a park improvement plan that can be recorded and updated to evidence improvement. This is particularly important where the site is a current Green Flag Award park and the improvement plan forms part of the management plan.

5.9 Green Flag Forum

The Green Flag Forum will convene towards the end of year to discuss the results and agree strategic objectives that should lead to improvements in both area and citywide sites.

Items that the Forum may wish to consider include;

- Improving the remaining four parks that failed to meet the Edinburgh Minimum Standard.
- Agree a way forward to update Parks Management and Improvement Plans and possible inclusion in assessment.
- Discuss potential ideas to update the bandwidth scoring/terminology.
- Develop citywide and local improvement actions identified from the results/recommendations.
- How to improve the monitoring and maintenance of GF parks to ensure standards are retained.
- Identifying parks suitable for Green Flag Award submission.

6 Green Flag Awards



Green Flag Awards are a way of recognising sites of quality. The awards are given out on an annual basis and each site must re-submit their application each year to retain the award. The scheme also involves a Green Flag Community Award (formerly Green Pennant) which is to reward sites that are managed by the community.

In 2007, the scheme was trialled in Scotland with Edinburgh taking part along with Dundee. In that year Edinburgh was successful in achieving two Green Flags (Braidburn Valley Park and Harrison Park). The total rose to three in 2008, and five in 2009, that year also saw the first Green Pennant in Scotland awarded to Corstorphine Walled Garden. In 2010, Edinburgh was awarded a further eight Green Flags bringing the total to 13 plus Corstorphine Walled Garden retained their Community Award.

In 2011 Edinburgh was included in the pilot of the Green Flag Group Award Scheme and as a result all Edinburgh's existing Green Flag Award winning sites were automatically awarded Green Flags where the standard was maintained following self assessment. In addition to this a further seven new sites were successful in 2011, four in 2012, two in 2014, three in 2015 and one in 2016.

All Green Flag Award winning parks managed by City of Edinburgh Council were successfully retained in 2017 and with no new parks submitted the total remains at 30 plus one Green Flag Community Award.

6.1 Green Flag Group Award

In 2011, Edinburgh was invited to take part in the pilot of the Green Flag Group Award that sees two peer judges assess the strategy the authority has to managing its greenspaces and assesses the risk of the authority failing to maintain its Green Flag Award parks to the required standard. The judges pay particular attention to how Green Flag has been adopted into the various strategies, through self assessing its entire stock using the Green Flag criteria and how it uses the information to improve, not only the Green Flag Award winning sites but all sites across the authority.

The last assessment in 2014 resulted in a successful 'Low Risk' result with judges highlighting Community Involvement, the Park Quality Assessment process and Landscape Quality Standards as strengths.

Following the self assessments, Green Flag Award winning sites in 2016 can be awarded a Green Flag Award for 2017 by the authority themselves if the standard is maintained. However, these sites will be subject to one or more mystery shopper assessments which will see an external Green Flag judge arriving at the park unannounced and assessing the site based on visitor experience.

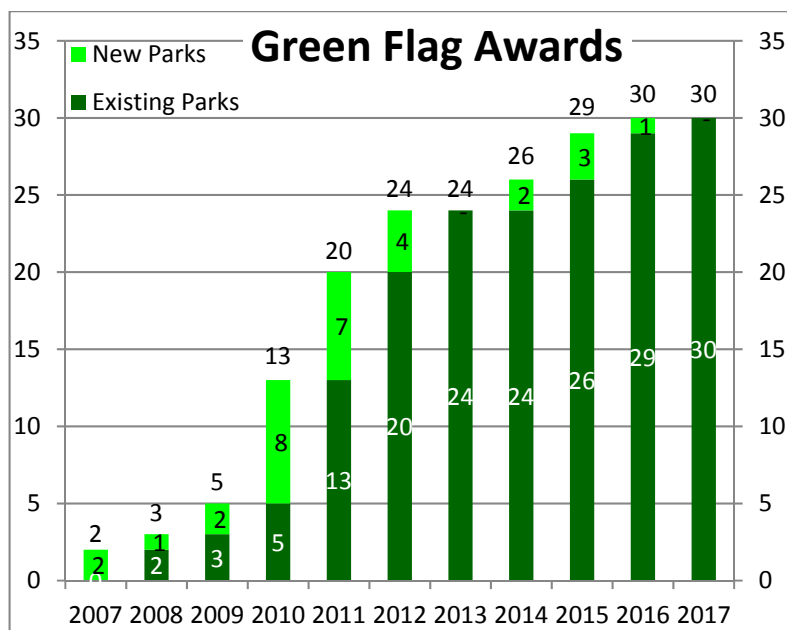
As part of the PQA assessments, judges are asked to report any major issues found whilst undertaking assessments to the site manager. For Green Flag Award parks, this reporting is extended to any issues that fall below expected Green Flag quality. This approach ensures managers are aware of issues affecting Green Flag parks and acts as a early warning for sites that are subject to mystery shop assessments as part of the Green Flag scheme.

New sites identified for the award will continue to be assessed using the existing judging method of two judges assessing the management plan and undertaking a formal site visit.

A list of current Green Flag Award sites and the year first awarded can be found on the next page.


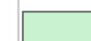
6.2 Green Flag Award Site List

Green Flag Award Park	Locality	Year first achieved
Braidburn Valley Park	South East	2007
Harrison Park	South West	2007
Pentland Hills Regional Park	South West	2008
Easter Craiglockhart Hill	South West	2009
Hopetoun Crescent Gardens	North East	2009
Burdiehouse Burn Valley Park	South East	2010
Corstorphine Hill	North West	2010
Craigmillar Castle Park	North East	2010
Figgate Burn Park	North East	2010
Inverleith Park	North West	2010
London Road Gardens	South East	2010
Portobello Community Park	North East	2010
Station Road Park	North West	2010
Hailes Quarry Park	South West	2011
Hermitage of Braid & Blackford Hill	South East	2011
Morningside Park	South East	2011
Muir Wood Road Park	South West	2011
Princes Street Gardens	South East	2011
St Margarets Park	North West	2011
Victoria Park	North West	2011
Back Braes & Ferry Glen	North West	2012
Lochend Park	North East	2012
Prestonfield Park	South East	2012
Ravelston Park & Woods	North West	2012
King George V Park – Eyre Place	North West	2014
Spylaw Park	South West	2014
Ferniehill Community Park	South East	2015
Rosefield Park	North East	2015
Starbank Park	North West	2015
Seven Acre Park	South East	2016
Green Flag Community Award (formerly Green Pennant Award)		
Corstorphine Walled Garden	North West	2009



Morningside Park

GREEN FLAG AWARD PARKS 2017

 Green Flag Parks
 Other Parks

