



South East Locality Open Space Action Plan

March 2017

Introduction

This is one of four Open Space Action Plans to support delivery of Open Space 2021, Edinburgh's Open Space Strategy.

Open Space is a key element of Edinburgh's physical, social and environmental fabric and Open Space 2021 sets guiding standards for existing and new open space provision as the city grows.

Through standards based on open space quality, size and distance from homes, the Strategy aims to increase the number of people that can benefit from greenspaces that are sustainably managed, biologically diverse and contribute to health and wellbeing.

The Open Space Profile shows how the Locality compares to the overall picture of open space across the city, highlighting changes to provision.

It is a working plan, to be reviewed periodically to capture collective efforts which lead to the improvement and extension of Edinburgh's green network. Actions, including estimated costs, may be subject to review, further feasibility studies and change.

The Action Plan sets out proposals to help reduce inequalities in access to good quality open space and play provision. In time, it will reflect local environment priorities emerging through co-production of Locality Improvement Plans by Community Planning partners.

The first version shows citywide priorities identified by Edinburgh's annual parks quality assessment and actions carried forward from the existing Play Area Action Plan (2011-16) and previous Open Space Strategy (2010).

The Action Plan will co-ordinate ongoing open space management actions with those relating to development, including changes arising from individual planning decisions and the delivery of new parks and play areas through the adopted Edinburgh Local Development Plan (LDP).

Further details may be included as related strategies, guidance and projects are progressed, in particular those relating to allotments and food growing, biodiversity, climate change adaptation, outdoor sports facilities, green networks and play.

Open Space Profile

Audit

The Open Space Audit (2016) recorded urban open spaces over 500 square metres within the Locality and categorised these by their main function or type.

Changes to greenspace provision since 2009/10 include:

- Redevelopment at Gracemount to provide new Council homes has resulted in the replacement of existing local greenspace and play area. Local greenspace has been lost to development at Larkfield Gardens, Moredun Park Gardens, Ravenscroft Gardens and Mayfield Road. New local greenspace has been created at Moredun Dykes Road;
- Since 2010, the Parks Quality Score of the following parks has improved to meet the large greenspace standard: Braid Hills, Inch Park, Moredun Park and Drum Park. Calton Hill has declined in quality below the standard expected of a 'Premier Park';
- Play provision was created at Hyvot Loan and replaced at Gracemount. Play areas were removed at Burdiehouse and The Pleasance;
- At the former St Margaret's School campus, East Suffolk Road, a Planning Appeal Decision granted consent for residential development resulting in the loss of the privately owned playing field. To compensate for this loss, a financial contribution of £130,000 is required from the developer to upgrade the public playing fields at Kirkbrae/Double Hedges;
- The former Tipperlinn Bowling Green has been lost to redevelopment at the Royal Edinburgh Hospital where delivery of a shared use path adjacent the South Suburban Railway is in progress; and
- New allotments have been created at India Place, Inchkeith Court, Prestonfield, Baronscourt and Northfield Drive.

The following maps show a picture of where Edinburgh's greenspace standards from Open Space 2021 are being achieved and where there are deficiencies in access to greenspaces or play areas. To reduce inequalities in access to provision, quality data is mapped against the 20% most deprived areas in Scotland from the Scottish Index of Multiple Deprivation (SIMD - 2016).

South East Edinburgh

Open Space Action Plan (March 2017)

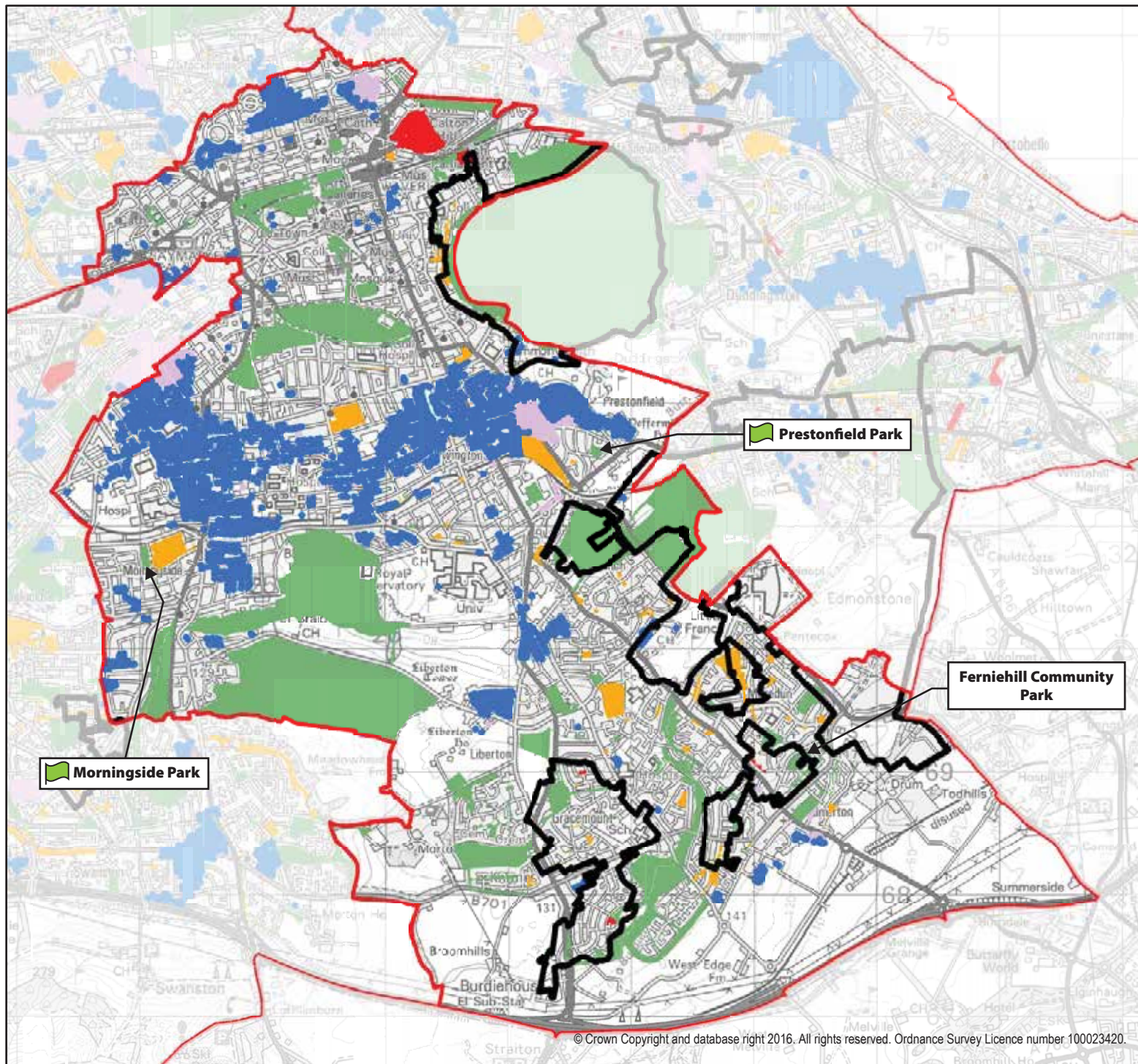
Local Greenspace Standard

Open Space 2021 requires all homes to be within 400 metres walking distance of a good quality, accessible greenspace of at least 500 sq.m.

73.5% of homes in the South East Locality are served by the local greenspace standard by comparison with **87.7%** across the city. Some **26.5%** of homes are not served by the standard, represented by the areas shown in blue in the map overleaf. Residential areas which are served by the standard are indicated by the black and white base map only, whilst places highlighted in pink reflect improvements in access to greenspaces since 2010.

Areas not served by the local greenspace standard, include broad areas of Merchiston, Morningside, Grange and Sciennes with some more limited area deficient in terms of the standard to the north of Liberton by Liberton Brae and Liberton Drive. These tend to be areas of housing with access to private gardens where the historic building pattern provides limited scope to improve access to public open space.



Local greenspaces awarded a Green Flag Award in 2016 included: Morningside Park, Prestonfield Park and Ferniehill Community Park.




Legend

Quality grade



-  Homes now served by standard but not in 2010
-  Homes without access to a good quality local greenspace

-  Scottish Index of Multiple Deprivation 2016 (20% most deprived areas in Scotland)

-  Green Flag Award 2016/17

South East Locality
Access to Local
Greenspace in 2016

South East Edinburgh

Open Space Action Plan (March 2017)

Large Greenspace Standard

Open Space 2021 requires all homes to be within 800m walking distance of an accessible large greenspace of at least 2 hectares.

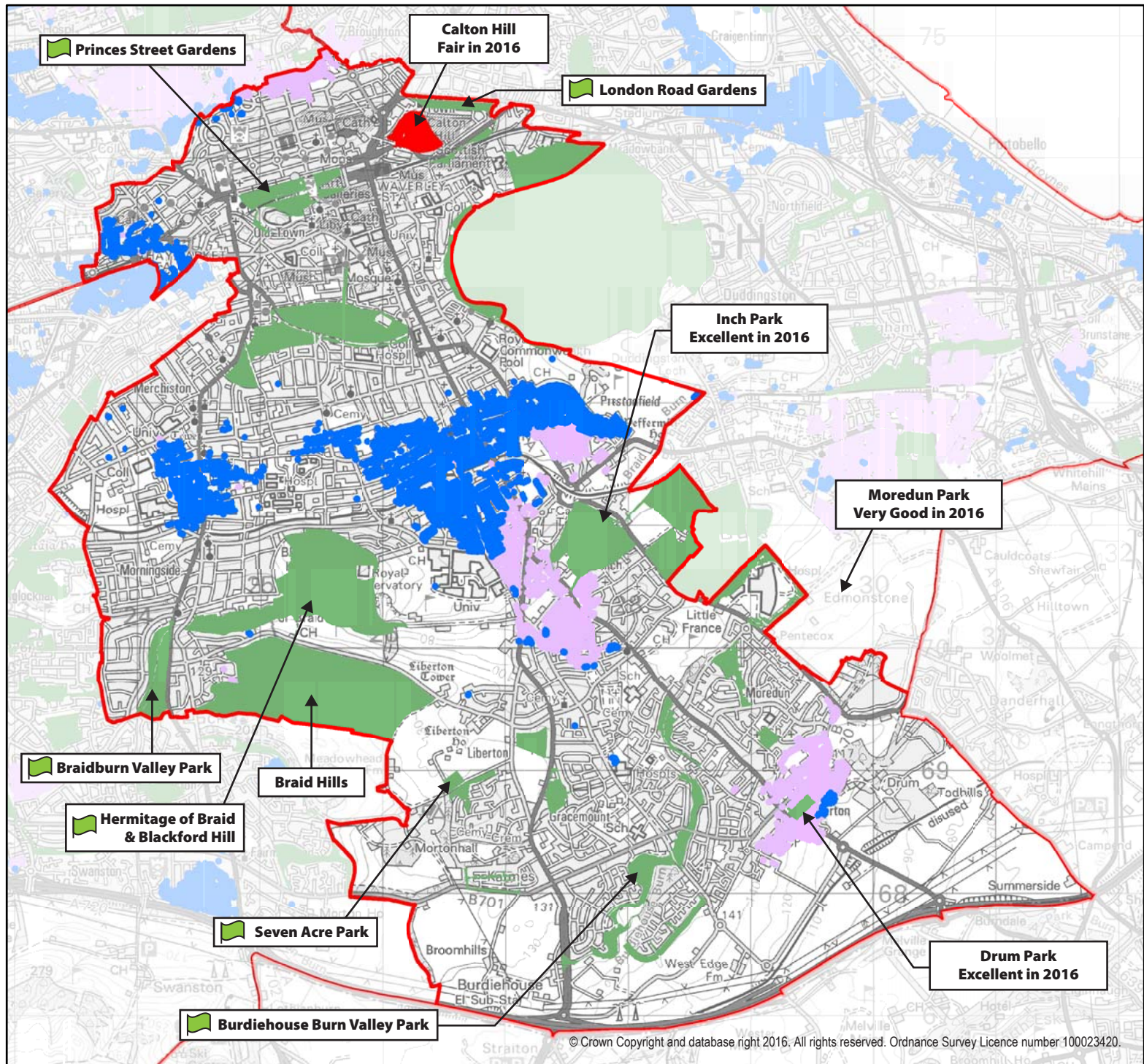
- **All newly created large greenspaces should be of 'good' quality regardless of type**
- **Council managed large greenspaces should be of 'good' quality for City Parks, Community Parks and Recreation Grounds and 'good+' for Premier Parks and Natural Heritage Parks.**

88.3% of homes in the South East Locality are served by the large greenspace standard by comparison with **79%** across the city. Some **11.7%** of homes are not served by the standard, represented by the areas shown in blue in the map overleaf. Residential areas which are served by the standard are indicated by the black and white base map only, whilst places highlighted in pink reflect improvements in access to greenspaces since 2010.

Since 2010, the Parks Quality Score of the following parks has improved to meet the large greenspace standard: Braid Hills, Inch Park, Moredun Park and Drum Park. The quality of all other parks and gardens already meeting the standard was either maintained or in most cases further improved.

Calton Hill has declined from 'good' quality in 2009 to 'fair' by 2016, falling below the standard of 'good+' expected of a Premier Park that serves international and national visitors as well as local and citywide needs.

Large Parks and Gardens awarded a Green Flag in 2016 include: London Road Gardens, Princes St Gardens, Braidburn Valley Park, Hermitage of Braid including Blackford Hill, Burdiehouse Burn Valley Park and Seven Acre Park.



Legend

- Large Open Space
 - meeting standard
 - not meeting standard

- Homes now served by standard but not in 2010
- Homes without access to a good quality local greenspace

- Scottish Index of Multiple Deprivation 2016 (20% most deprived areas in Scotland)

- Green Flag Award 2016/17

South East Locality
Access to Large
Greenspace in 2016

© Crown Copyright and database right 2016. All rights reserved. Ordnance Survey Licence number 100023420.

Play Access Standard

Open Space 2021 requires all homes to have access to at least one of the following:

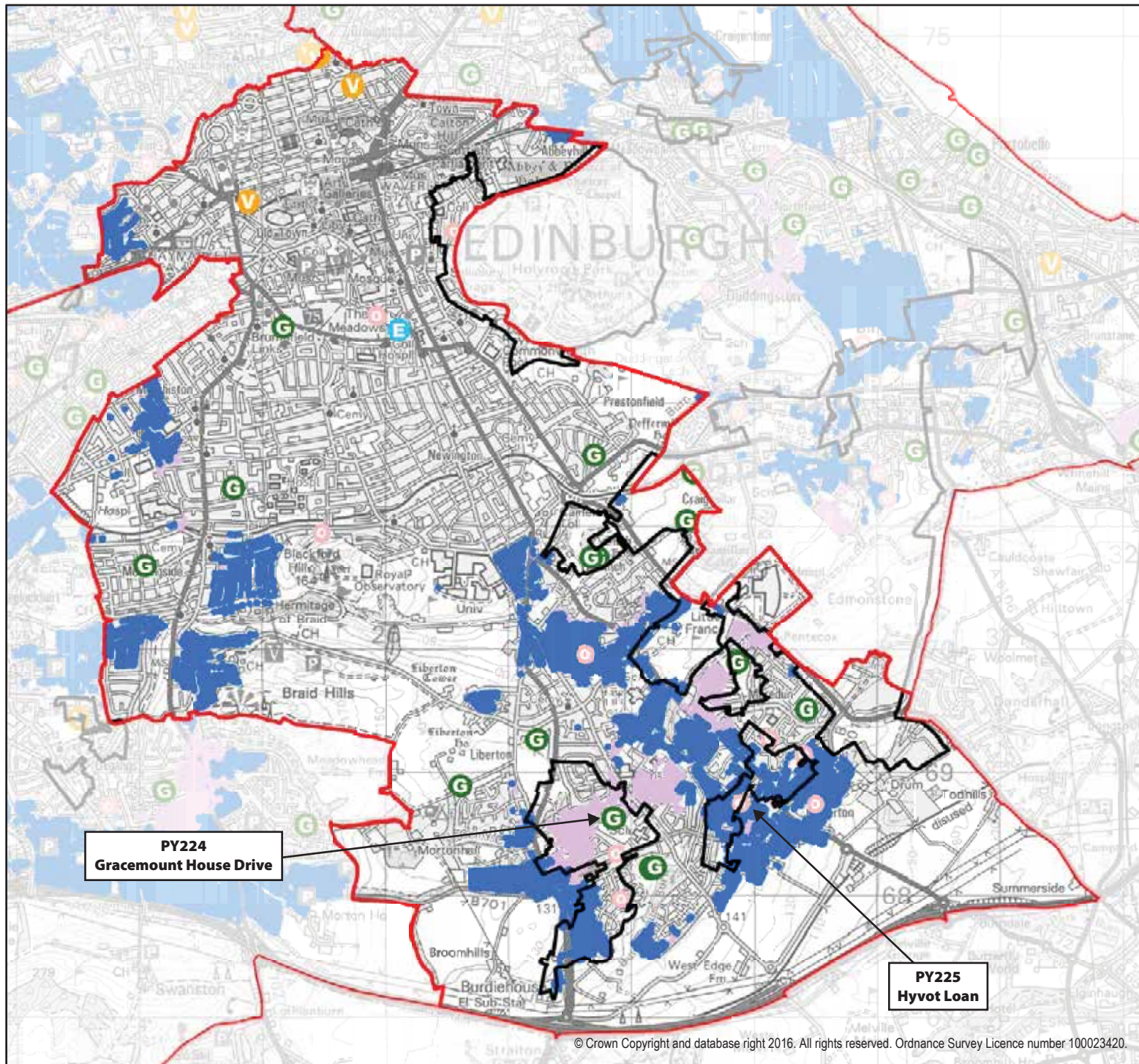
- A play space of good play value (51 – 70) within 800 metres walking distance
- A play space of very good play value (71 – 100) within 1200 metres walking distance
- A play space of excellent play value (101 +) within 2000 metres direct distance

86.2% of homes in South East Edinburgh are served by the Play Access Standard by comparison with **67%** citywide. Some **13.8%** of homes are not served by the standard, represented by the areas shown in blue in the map overleaf. Residential areas which are served by the standard are indicated by the black and white base map only, whilst places highlighted in pink reflect improvements in access to greenspaces since 2010.

Play provision was created at Hyvot Loan and replaced as part of redevelopment at Gracemount. Play areas were removed at Burdiehouse and The Pleasance. The play area at Marytree House was improved from 'fair' to 'good' play value. All other play areas were maintained to current play value categories.

Areas not served by the standard include parts of Kaimes and Southouse; and residential areas generally between Lasswade Road and Gilmerton Road – including parts of Hyvot's Bank, Ferniehill and Moredun.

Parts of the city underlined above have been identified in the Scottish Index of Multiple Deprivation as within the 20% most deprived areas in Scotland (SIMD 2016).



Legend

PY 123 New Play Spaces are shown with a PY site ref.

○ Scottish Index of Multiple Deprivation 2016
(20% most deprived areas in Scotland)

Play Spaces contributing to standard

- E Play space of 'Excellent' Play Value
- V Play space of 'Very Good' Play Value
- G Play space of 'Good' Play Value

Access to Play Space from homes within urban area

- Homes now served by standard but not in 2010
- Homes still not served by the standard in 2016

Other Play Spaces not contributing to standard

- B Stand alone Ball Court
- C Other Council
- P Other non-Council

South East Locality Play Area Access in 2016

South East Edinburgh

Open Space Action Plan (March 2017)

Allotments and Community Growing

Existing allotments include: East Scotland Street Lane – North and South; Bridgend Farm, Lady Road, Relugas Place, West Mains and Midmar. New provision includes: India Place, Inchkeith Court, Prestonfield, Baronscourt and Northfield Drive.

Community Growing: Through the Edinburgh Biodiversity Plan, Parks, Greenspaces and Cemeteries, Edible Edinburgh, Edinburgh and Lothians Greenspace Trust and Edinburgh Living Landscape are working to increase create community gardens in areas of deprivation subject to funding. The Council's housing investment strategy is also investigating use of land to support tenants to grow fruit and vegetables.

Outdoor Sports Facilities

A new Sport and Physical Activity Strategy will be prepared to examine demand and capacity for outdoor sports facilities. The Open Space Strategy continues to support the long-term objective to direct investment to multi-pitch venues.

Cemeteries and Burial Grounds

The Council will work with Edinburgh World Heritage and community groups to improve five historic burial grounds in the World Heritage Site, including: the Kirkyards of St Cuthbert's, Greyfriars, and Canongate and burial grounds of Old Calton and New Calton.

Quality surveys will be carried out to identify other cemeteries and burial grounds within the Locality which could be improved to benefit public access to greenspace. Friends of Groups will be supported to contribute towards the improvement of historic burial grounds, through volunteer activities and fund-raising, in recognition of their heritage and recreational value as local greenspaces.

The Green Network

The Meadows, Braidburn Valley Park, Blackford Hill, Braid Hills and Burdiehouse Burn Valley Park provide important green network connections through the South East Locality. Via short sections of on-road path, the Meadows lead westward to the Union Canal and eastward to Holyrood Park and the Innocent Railway. Blackford Hill and the Hermitage of Braid link westward to the Braid Burn Valley Park and southward via Cockmylane to Swanston and the Pentland Hills Regional Park. There are also east-west links via the Hermitage and Blackford Glen from Dreghorn in the southwest, trending northeastwards Duddingston Loch and the Figgate Burn to Portobello. From Braid Road there are links through the Braid Hills from Mortonhall to Liberton via Stanedykehead. North-south links include from Buckstone Snab to Howe Dean

South East Edinburgh

Open Space Action Plan (March 2017)

Path and Blackford Hill, from which point the Meadows lies beyond the Grange and Marchmont. Burdiehouse Burn Valley Park leads eastwards from Mortonhall to Craigmillar Castle Park.

There are a number of Edinburgh Living Landscape (ELL) sites across the South East Locality helping to improve biodiversity of the green network including: London Road Gardens, Kirkbrae/Double Hedges, Inch Park, Liberton Park, Burdiehouse Burn Valley Park and Ferniehill Drive.

Across the city, The Edinburgh Biodiversity Partnership are progressing work to identify, develop and support strategic green network and landscape scale partnership projects to restore, create or reconnect habitats. Edinburgh & Lothians Greenspace Trust, City of Edinburgh Council Planning and Transport, Localities and Edinburgh Living Landscape are also carrying out ongoing cycle path management as funding opportunities arise.

Open Space Actions proposed in the South East Locality to meet the Strategy's standards are set out in the map and table below:

Map Ref	Action	Type	Description	Who's involved?	Estimated Cost	Funding	Timescale	Status
a)	Calton Hill	Large Greenspace	Preparation of a new management plan and engagement on site improvements. Quality to be raised from 'fair' to meet quality standard for Premier Park.	Edinburgh World Heritage; Culture and Sport; Parks, Greenspaces and Cemeteries	£5 m - unfunded	External funding application to be prepared and if successful any match funding by Council to be subject to approval by Finance and Resources Committee	2016-21	Review of Park Management Plan in progress.

South East Edinburgh

Open Space Action Plan (March 2017)

b)	Broomhills Park	Large Greenspace	Substantial developer led parkland as part of Broomhills HSG 21 development to meet Council's large greenspace standard. Minded to grant planning application includes 3 ha central parkland.	Developer	Not known	Developer (HSG 21)	With development.	Not started.
		Play Space	Minded to grant planning application includes provision of new play facilities to 'good' play value within central parkland.					
		Green Network	6 ha woodland planting required as part of LDP development principles. See also Mortonhall, Burdiehouse and Gilmerton to Straiton.					
c)	Burdiehouse	Local Greenspace	Integrate the design and layout of open space with the Area of Importance for Flood Management and beyond this area, provide additional amenity and biodiversity benefits through SUDs.	Developer	£50,000	Developer (HSG 22)	With development.	Planning permission granted 14/04880/FUL.
		Green Network	Improve semi-natural habitat and amenity value of the Local Nature Reserve, extend woodland along the southern bank of the Burdiehouse Burn and incorporate off-road links to the Burdiehouse Burn Valley Park.	Developer				
d)	Gilmerton Station Road	Large Greenspace	Creation of new 2 ha large greenspace to meet quality standards to the northwest of the site (P2 The Western Park); delivery of Northern Park, Southern Park; SUDs/local greenspace areas and civic spaces.	Developer	Not known	Developer (HSG 24)	With development.	Planning permission granted 14/01649/PPP. Phasing approved 16/03299/AMC. Western Park to be delivered prior to
		Play Space	Provision of play area to 'very good' play value within P2 - The Western Park.					

South East Edinburgh

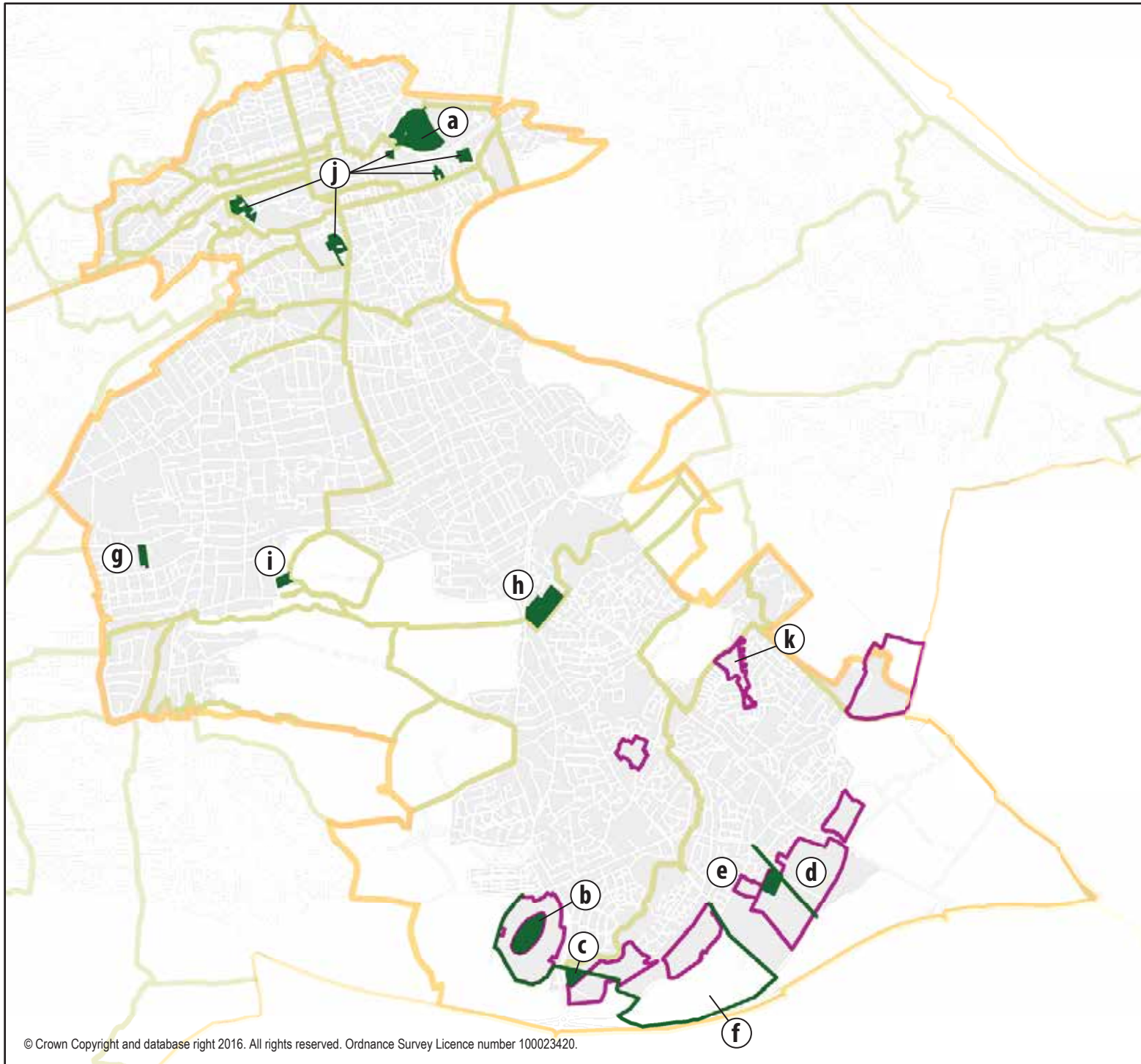
Open Space Action Plan (March 2017)

		Green Network	New green corridor approx. 500 m in length between Gilmerton Station Road and Gilmerton Dykes Road.					occupation of phases 5 and 6.
e)	Gilmerton Dykes Road	Green Network	Provision of new multi-user path link from Gilmerton Dykes Road to Gilmerton Station Road.	Developer	Not known	Developer (HSG 23)	With development.	Planning application 14/01446/FUL Appeal Allowed.
f)	Mortonhall, Broomhills, Burdiehouse and Gilmerton to Straiton in Midlothian	Green Network	Green network connections between Burdiehouse Burn Valley Park, Mortonhall, Morton Mains, Gilmerton and Straiton, including off-site multi-user path connection to link with paths network in Midlothian via Straiton Pond. This should include 4m wide landscape treatment to the west across open ground, including verge, hedgerow and hedgerow trees.	Respective developers for each site, Planning and Transport	Not known	Developer (HSG 22, 24)	With development.	Not started.
g)	Morningside Public Park	Play Space	Improve to 'good' play value	Parks, Greenspaces and Cemeteries	£80,000	Unfunded. External funding to be sought by local community	2016-21	Not started.
h)	Kirkbrae / Double Hedges	Playing Fields	Upgrade to the existing playing fields to compensate for loss of private pitch at East Suffolk Road.	Culture and Sport	£130,000	Developer for East Suffolk Road, PPA-230-2172	With development. Prior to the completion of the fourth residential unit the developer shall pay the Council the agreed sum.	Not started.
i)	Midmar Allotments	Allotments	Extension to existing allotment site	Parks, Greenspaces and Cemeteries	£121,000	Unfunded. Est. cost excludes land acquisition.	2016-21	Not started.

South East Edinburgh

Open Space Action Plan (March 2017)

j)	Edinburgh Graveyards Project	Cemeteries and Burial Grounds	Kirkyards of St Cuthbert's, Greyfriars, and Canongate and burial grounds of Old Calton and New Calton. Improve as community greenspace resources and attractions for visitors to the city	Edinburgh World Heritage, Parks Greenspaces and Cemeteries, Friends Groups	Not known	No Council budget allocation. External funding to be sought.	2016-21	EWH and Friends of New Calton Burial Ground awarded a grant of £11,986 from the New Waverley Community Fund to carry out enhancement work, including: installing a sign on Calton Road; planting; guided tours; onsite trail; lime pointing training workshop; community tidy-ups and family fun day.
k)	Mordunvale	Allotments	Part of LDP Proposal HSG 30 to provide new housing on approx. Half the site and improve the quality of remaining open space, including: allotments and multi-user path links.	Developer / Housing & Regeneration / Parks, Greenspaces and Cemeteries.	Not known	Developer (HSG 30)	With development	Not started.



Legend

- Greenspace Action
- Open Space and Core Paths Network
- LDP Housing Proposal

South East Locality Strategic Greenspace Actions

For further information contact:

Planning & Transport
The City of Edinburgh Council
Waverley Court
Level G.3
4 East Market Street
Edinburgh EH8 8BG

Telephone: 0131 529 3550
email: openspacestrategy@edinburgh.gov.uk
Website: www.edinburgh.gov.uk/openspacestrategy

