



North West Locality Open Space Action Plan

March 2017

◆ EDINBURGH ◆
YOUR COUNCIL - YOUR ENVIRONMENT

Introduction

This is one of four Open Space Action Plans to support delivery of Open Space 2021, Edinburgh's Open Space Strategy.

Open Space is a key element of Edinburgh's physical, social and environmental fabric and Open Space 2021 sets guiding standards for existing and new open space provision as the city grows.

Through standards based on open space quality, size and distance from homes, the Strategy aims to increase the number of people that can benefit from greenspaces that are sustainably managed, biologically diverse and contribute to health and wellbeing.

The Open Space Profile shows how the Locality compares to the overall picture of open space across the city, highlighting changes to provision.

It is a working plan, to be reviewed periodically to capture collective efforts which lead to the improvement and extension of Edinburgh's green network. Actions, including estimated costs, may be subject to review, further feasibility studies and change.

The Action Plan sets out proposals to help reduce inequalities in access to good quality open space and play provision. In time, it will reflect local environment priorities emerging through co-production of Locality Improvement Plans by Community Planning partners.

The first version shows citywide priorities identified by Edinburgh's annual parks quality assessment and actions carried forward from the existing Play Area Action Plan (2011-16) and previous Open Space Strategy (2010).

The Action Plan will co-ordinate ongoing open space management actions with those relating to development, including changes arising from individual planning decisions and the delivery of new parks and play areas through the adopted Edinburgh Local Development Plan (LDP).

Further details may be included as related strategies, guidance and projects are progressed, in particular those relating to allotments and food growing, biodiversity, climate change adaptation, outdoor sports facilities, green networks and play.

Open Space Profile

Audit

The Open Space Audit (2016) recorded urban open spaces over 500 square metres within the Locality and categorised these by their main function or type.

Changes to greenspace provision since 2009/10 include:

- New local greenspaces have been created through housing developments at Ratho, Kirkliston, East Craigs, Drumbrae, Kimmerghame Loan, Ellersly Road and West Pilton Crescent. Local greenspace has been lost through redevelopment of Council housing at Muirhouse and Pennywell, where new provision will be established;
- In 2014, the Council opened Buttercup Farm Park, a new public park and play area on the site of the former Drumbrae Primary School playing fields. New publicly accessible parkland and play facilities were also created to serve the expanding communities of Ratho and Kirkliston;
- Since 2010, the Parks Quality Score of the following parks has improved to meet the large greenspace standard: Allison Park and Pikes Pool, Gypsy Brae Park and Recreation Ground, East Pilton Park, Muirhouse Linear Park and Inverleith Park;
- The following play areas were improved from 'fair' to 'good': Craigievar Square, Union Park, Ratho Station Park, Riverside Park, East Pilton Park and Northview Court. Play facilities were upgraded to 'Very Good' at King George V Park, Eyre Place. New public play provision was created at Dean Village and through private sector housing at East Craigs. Existing provision was removed at West Pilton Rise and renewed at Gateside, Kirkliston;
- 3500 trees were planted along the North Edinburgh Paths and non-native invasive species cleared by Edinburgh and Lothians Greenspace Trust and sections of the Edinburgh Waterfront Promenade were implemented between Cramond and Granton; and
- New allotments have been established at Drumbrae, Kirkliston and at Victoria Park through the conversion of one existing bowling green to provide growing space.

North West Edinburgh

Open Space Action Plan (March 2017)

The following maps show a picture of where Edinburgh's greenspace standards from Open Space 2021 are being achieved and where there are deficiencies in access to greenspace or play areas. To reduce inequalities in access to provision, quality data is mapped against the 20% most deprived areas in Scotland from the Scottish Index of Multiple Deprivation (SIMD - 2016).

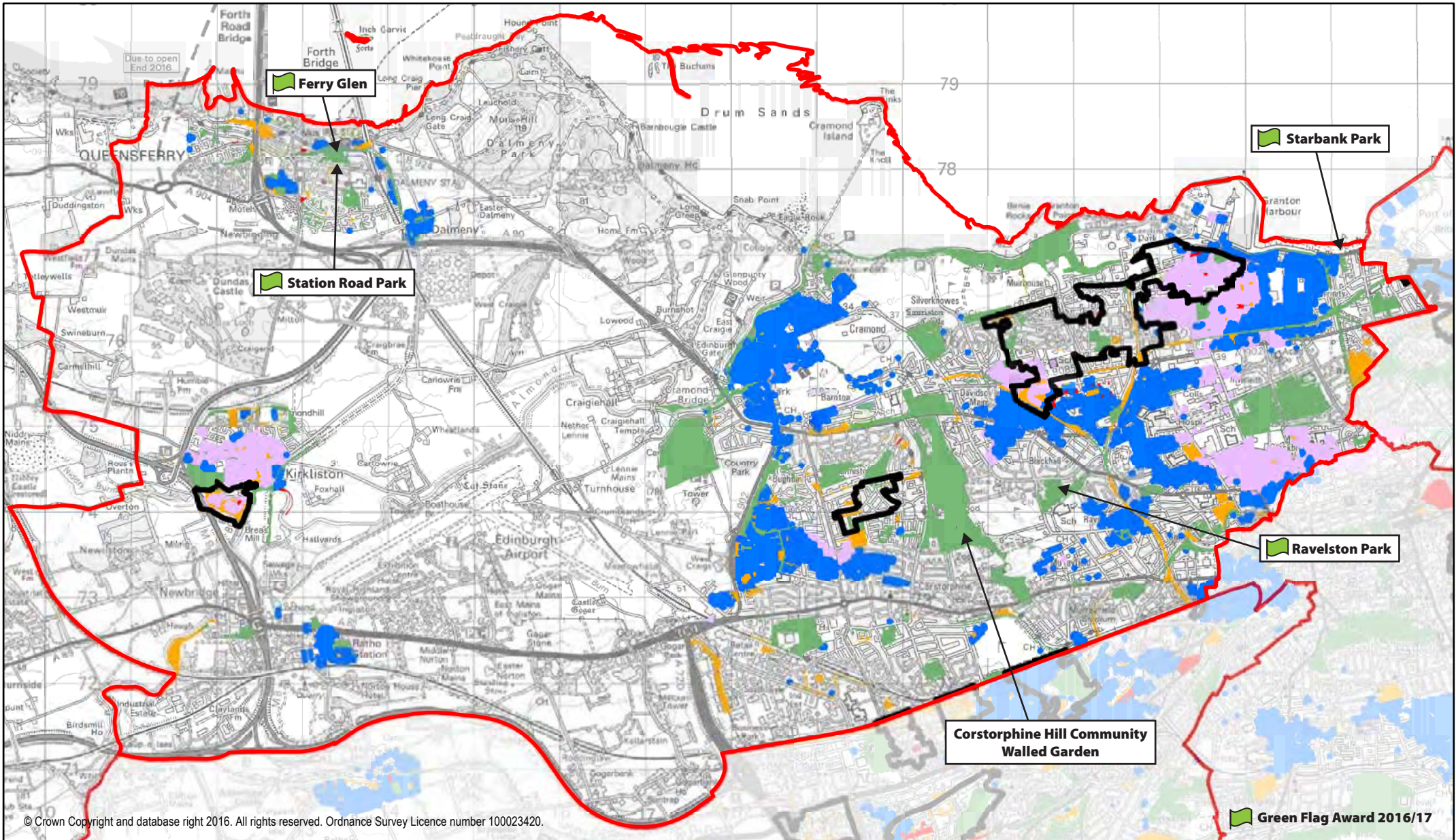
Local Greenspace Standard

Open Space 2021 requires all homes to be within 400 metres walking distance of a good quality, accessible greenspace of at least 500 sq.m.

77% of homes in the North West Locality are served by the local greenspace standard by comparison with 87.7% across the city. Some 23% of homes are not served by the standard, represented by the areas shown in blue in the map overleaf. Residential areas which are served by the standard are indicated by the black and white base map only, whilst places highlighted in pink reflect improvements in access to greenspaces since 2010.

Areas not served by the local greenspace standard, include parts of Trinity and Wardie, Blackhall, Drylaw and Craigleith, Cramond, East Craigs and Corstorphine. As a result of improvements to Muirhouse Linear Park and East Pilton Park, the map showing where the standard has been achieved reveals no clear relationship with the 20% most deprived areas in Scotland (SIMD 2016)

Local greenspaces awarded a Green Flag Award in 2016 included: Starbank Park, Ravelston Park, Ferry Glen, Station Road Park and Corstorphine Hill Community Walled Garden in the Green Flag Award Community Category.



Legend	Quality grade	Scottish Index of Multiple Deprivation 2016 (20% most deprived areas in Scotland)	Homes now served by standard but not in 2010 Homes without access to a good quality local greenspace	<h2>North West Locality</h2> <h3>Access to Local Greenspace in 2016</h3>		
	Good				Fair	Low

Large Greenspace Standard

Open Space 2021 requires all homes to be within 800m walking distance of an accessible large greenspace of at least 2 hectares.

- **All newly created large greenspaces should be of 'good' quality regardless of type**
- **Council managed large greenspaces should be of 'good' quality for City Parks, Community Parks and Recreation Grounds and 'good+' for Premier Parks and Natural Heritage Parks.**

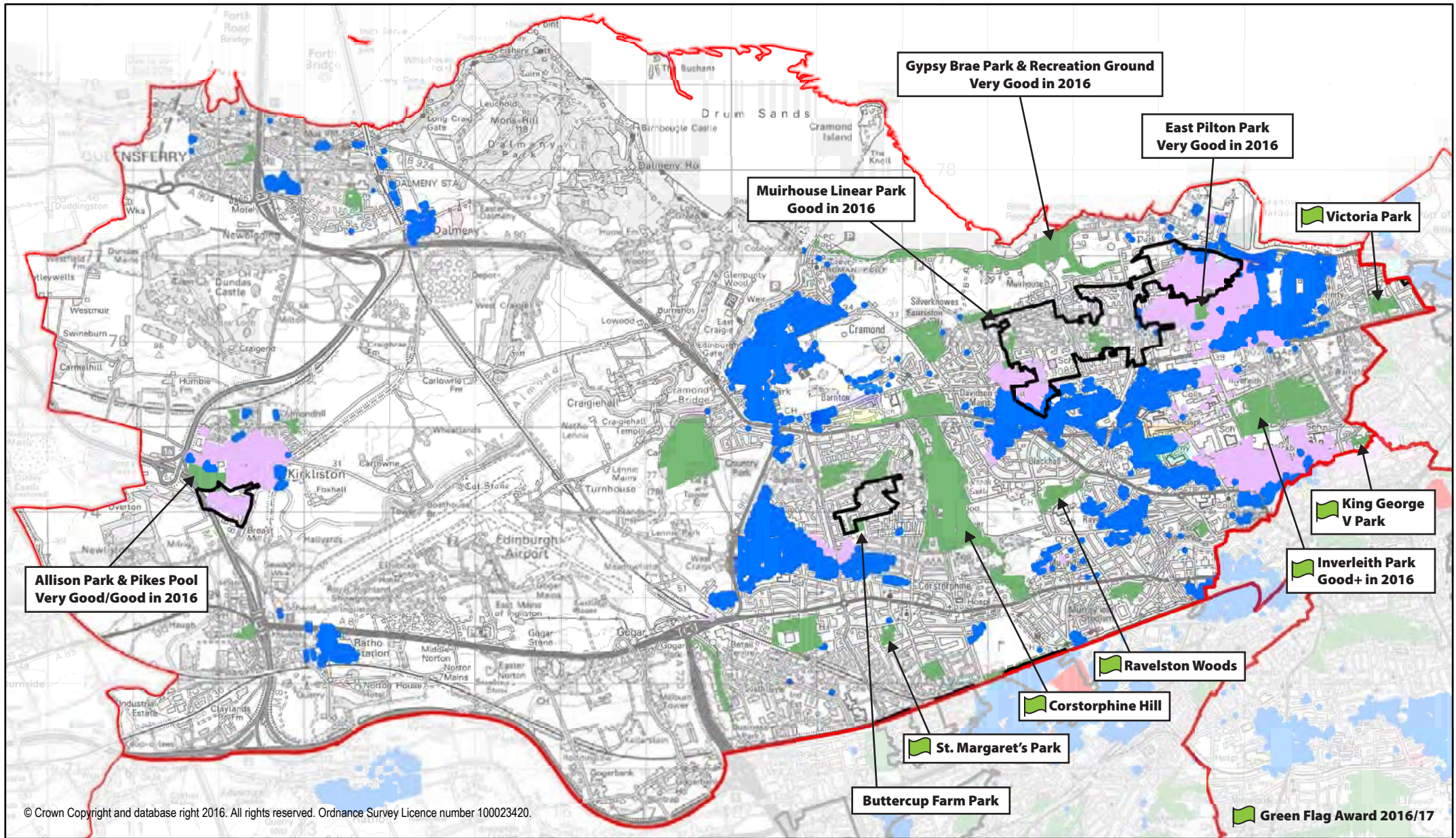
80.6% of homes in the North West Locality are served by the large greenspace standard by comparison with **79%** across the city. Some **19.4%** of homes are not served by the standard, represented by the areas shown in blue in the map overleaf. Residential areas which are served by the standard are indicated by the black and white base map only, whilst places highlighted in pink reflect improvements in access to greenspaces since 2010.

The parts of the city not served by the large greenspace standard reflect those without access to local greenspaces.

Since 2010, the Parks Quality Score of the following parks has improved to meet the large greenspace standard: Allison Park and Pikes Pool, Gypsy Brae Park and Recreation Ground, East Pilton Park, Muirhouse Linear Park and Inverleith Park.

In 2014, the Council opened Buttercup Farm Park, a new public park and play area on the site of the former Drumbrae Primary School playing fields. New publicly accessible parkland and play facilities were also created to serve the expanding communities of Ratho and Kirkliston.

Large Parks and Gardens awarded a Green Flag in 2016 include: Victoria Park, King George V Park, Inverleith Park, Ravelston Woods, Corstorphine Hill and St Margaret's Park.



Legend	
	Large Open Space meeting standard
	not meeting standard

- Homes now served by standard but not in 2010
- Homes still not served by the standard in 2016

Scottish Index of Multiple Deprivation 2016 (20% most deprived areas in Scotland)

North West Locality Access to Large Greenspaces in 2016

Play Access Standard

Open Space 2021 requires all homes to have access to at least one of the following:

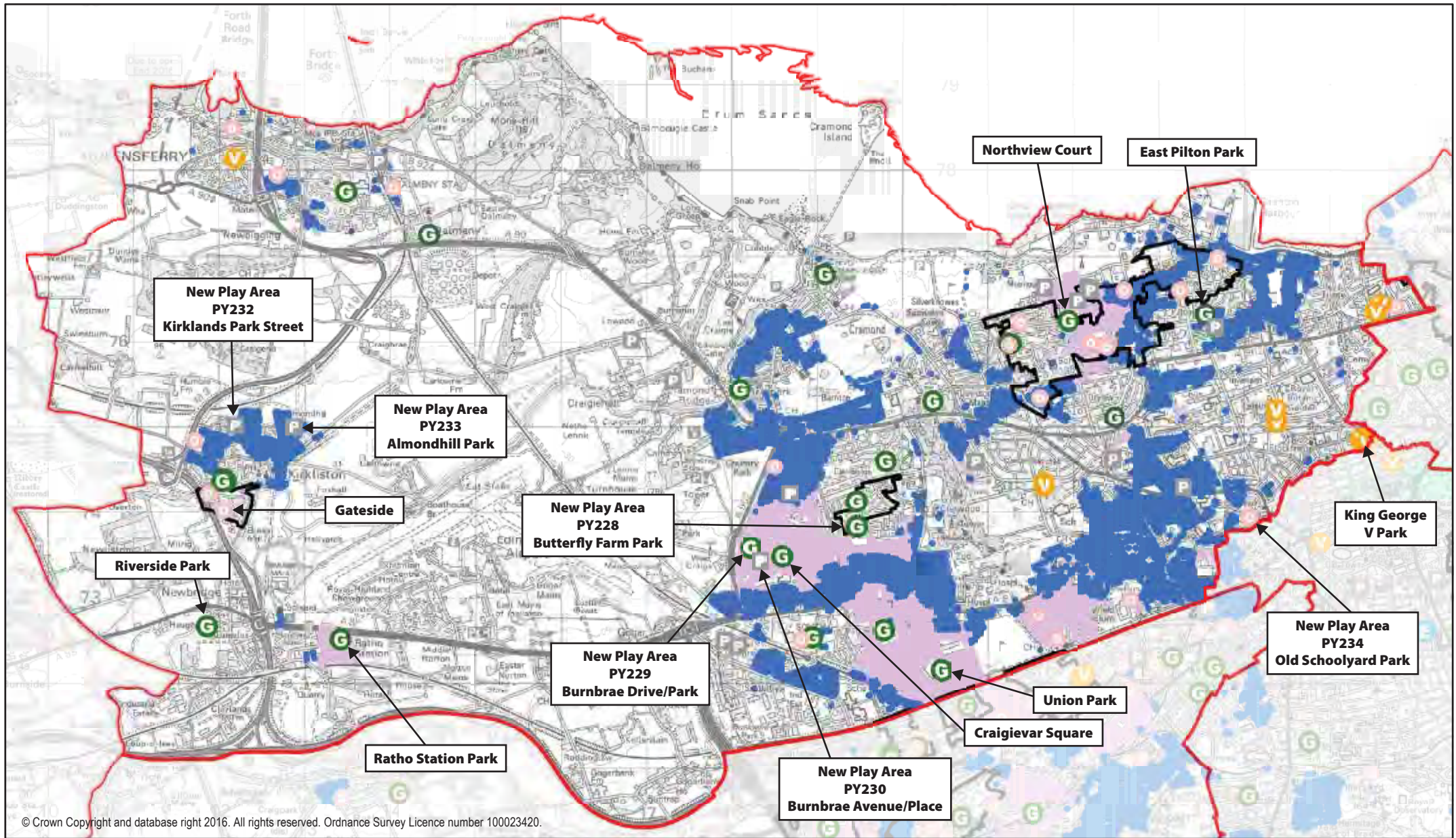
- A play space of good play value (51 – 70) within 800 metres walking distance
- A play space of very good play value (71 – 100) within 1200 metres walking distance
- A play space of excellent play value (101 +) within 2000 metres direct distance

66% of homes in North West Edinburgh are served by the Play Access Standard by comparison with 67% citywide. Some 34% of homes are not served by the standard, represented by the areas shown in blue in the map overleaf. Residential areas served by the standard are indicated by the black and white base map only, whilst places highlighted in pink reflect improvements in access to greenspaces since 2010.

The following play areas were improved from 'fair' to 'good': Craigievar Square, Union Park, Ratho Station Park, Riverside Park, East Pilton Park and Northview Court. Play facilities were upgraded to 'Very Good' at King George V Park, Eyre Place. New public play provision was created at Dean Village and through private sector housing at East Craigs. Existing provision was removed at West Pilton Rise and renewed at Gateside Kirkliston.

Areas not served by the standard include parts of North Kirkliston, Cramond, Cammo, Barnton, Bughtlin, Blackhall, Drylaw, Wardie, Trinity, Newhaven, Ravelston, Roseburn, Orchard Brae, Carrick Knowe, South Gyle and Corstorphine to the north of Glasgow Road.

Parts of the city underlined above have been identified in the Scottish Index of Multiple Deprivation as within the 20% most deprived areas in Scotland (SIMD 2016).



Legend

PY 123 New Play Spaces are shown with a PY site ref.

○ Scottish Index of Multiple Deprivation 2016 (20% most deprived areas in Scotland)

Play Spaces contributing to standard

- Play space of 'Excellent' Play Value
- Play space of 'Very Good' Play Value
- Play space of 'Good' Play Value

Access to Play Space from homes within urban area

- Homes now served by standard but not in 2010
- Homes still not served by the standard in 2016

Other Play Spaces not contributing to standard

- Stand alone Ball Court
- Other Council
- Other non-Council

North West Locality Play Area Access in 2016

North West Edinburgh

Open Space Action Plan (March 2017)

Allotments and Community Growing

Existing allotments include: Carrick Knowe, Succoth Gardens, Roseburn Cliff, Ferry Road, Warriston, Dean, Inverleith. New provision includes: Drumbrae, Kirkliston and Victoria Park.

Community Growing: Through the Edinburgh Biodiversity Plan, Parks, Greenspaces and Cemeteries, Edible Edinburgh, Edinburgh and Lothians Greenspace Trust and Edinburgh Living Landscape are working to increase create community gardens in areas of deprivation subject to funding. The Council's housing investment strategy is also investigating use of land to support tenants to grow fruit and vegetables.

Outdoor Sports Facilities

A new Sport and Physical Activity Strategy will be prepared to examine demand and capacity for outdoor sports facilities. The Open Space Strategy continues to support the long-term objective to direct investment to multi-pitch venues.

Two new all weather courts have been created at Victoria Park Tennis Courts and a tennis court and mini-tennis court creates at Warriston Playing Fields. The former Ferranti Bowling Green at Inverleith has become a children's nursery and one bowling green at Victoria Park has been turned into allotments. The playing fields at the former Agilent factory site in Queensferry have been redeveloped for housing.

Cemeteries and Burial Grounds

Quality surveys will be carried out to identify other cemeteries and burial grounds within the Locality which could be improved to benefit public access to greenspace. Friends of Groups will be supported to contribute towards the improvement of historic burial grounds through volunteer activities and fund-raising in recognition of their heritage and recreational value as local greenspaces.

The Green Network

The North West Locality includes a series of greenspaces linked by Core Paths, Rights of Way and other local routes. The North Edinburgh Paths network has several branches linking from Roseburn, Warriston with Granton, Trinity and Newhaven, which intersect with the Water of Leith Walkway. These green corridors connect a number of parks in the Locality including Roseburn Park, Inverleith Park, the Royal Botanic Garden Edinburgh, St Mark's Park, Victoria Park, Gypsy Brae and Forth Quarter Park. A spur from this route also gives access to Queensferry and the shore at Queensferry and first section of the Waterfront Promenade. The River Almond connects with these routes and gives access

North West Edinburgh

Open Space Action Plan (March 2017)

to Cammo Estate Park. The former Queensferry branch line provides a green network from Ferry Glen in Queensferry to Kirkliston and Ratho Station. As the city's largest woodland, Corstorphine Hill LNR provides a major network of paths in its own right. It also provides a key north-south link as Barnton Golf Course and Davidson's Mains Park through to the Water of Leith close to Saughton Park, linking eastwards to Ravelston Woods and westwards to the former Corstorphine branch line. On the southern edge of the Locality and northern edge of the South West Locality, delivery of the tram has also provided new green links between Carrick Knowe and Edinburgh Park Station.

There are a number of Edinburgh Living Landscape (ELL) sites across the North West Locality, including: Gypsy Brae, Davidson's Mains Park, Fauldburn Park, Corstorphine Hill, South Gyle Park, Inverleith Park, Easter Drylaw Recreation Park, West Pilton Park, Granton Crescent and Victoria Park.

Across the city, The Edinburgh Biodiversity Partnership are progressing work to identify, develop and support strategic green network and landscape scale partnership projects to restore, create or reconnect habitats. Edinburgh & Lothians Greenspace Trust, City of Edinburgh Council Planning and Transport, Localities and Edinburgh Living Landscape are also carrying out ongoing cycle path management as funding opportunities arise.

Open Space Actions proposed in the North West Locality to meet the Strategy's standards are set out in the map and table below:

Map Ref	Action	Type	Description	Who's involved?	Estimated Cost	Funding	Timescale	Status
a)	Dalmeny to Echline, Queensferry	Green Network	Provision of strategic green corridor* (~12.5ha landscape framework and green network) linking various parts of Queensferry from South Scotstoun to Builyeon Road, including crossing of existing A90.	Respective developers for each site, Planning and Transport	£1.2m	Developer (HSG 32, 33)	With development	Not started

North West Edinburgh

Open Space Action Plan (March 2017)

b)	South Scotstoun / Dundas Park	Play Space	Meeting the play access standard for South Scotstoun could involve delivery of play provision on site or financial contribution to upgrade Dundas Park play area to 'very good' play value.	Developer	Not known	Developer (HSG 33)	With development	Not started
c)	International Business Gateway Open Space	Large Greenspace	24 ha developer led parkland as part of wider IBG Emp 6 development. Strategic landscape design and open space requirements identified in West Edinburgh Landscape Framework (Dec 2011). Design and maintenance to meet the Council's large greenspace standard. Includes A8 corridor; central parkland; and archaeology park.	Developer	£2m	Developer LDP Greenspace Proposal GS6	With development.	IBG Phase 1 Planning application submitted 15/05580/PPP
		Play Space	Provision of new play area to 'very good' play value	Developer	Not known	Developer	With development.	
d)	Gogar Burn	Green Network	Proposed diversion of the Gogar Burn as shown on the LDP Proposals Map (GS7) to reduce flood risk, improve water quality and enhance biodiversity.	Developer	£22m	Edinburgh Airport / SEPA / City of Edinburgh Council / SNH	2018-2022	Not started
e)	Edinburgh Gateway Station to Maybury and Cammo	Green Network	Provision of strategic (~ 2.5ha) green corridor* linking north-south. This will connect Core Path 12 - A8 Link and Core Path 11 - River Almond. Northern woodland planting at Maybury (~3.5ha)	Respective developers for each site, Planning and Transport	£320k	Developer (HSG 19 & 20)	With development	Not started. Planning applications submitted for HSG 19

North West Edinburgh

Open Space Action Plan (March 2017)

f)	Cammo	Large Greenspace	Open space provision to provide view corridors to Mauseley Hill, Cammo Water Tower, Cammo Estate Park and Pentland Hills; and landscape framework to Maybury Rd and Boughtlin Burn.	Developer	Not known	Developer (HSG 20)	With development	Not started
		Play Space	New play provision to be provided on site.					
g)	Fauldburn Park	Play Space	Improve to 'good' play value	Parks, Greenspaces and Cemeteries	£80,000	No Council budget allocation. To be met by external funding.	2016-21	Not started. Progress subject to fund-raising by local community.
h)	River Almond Walkway	Green Network	Review potential to deliver continuous route between Cramond and Kirkliston	Planning and Transport; Parks, Greenspaces and Cemeteries	Not known	Not known	Long-term	Not started.
			Upgrading existing sections of the riverside path, including replacement for the Salvesen Steps at Cramond.	Parks, Greenspaces and Cemeteries	Not known	No Council budget allocation. Subject to external funding	Not known	Proposals to address access issues in relation to access for all are being explored in preparation for when resources become available.
i)	Maybury	Large Greenspace	Provision of two new large greenspaces to meet the 2 hectare large greenspace standard across the entire site.	Developer	Not known	Developer (HSG 19)	With development	Planning application submitted
		Play Space	Provision of new play area to 'very good' play value					

North West Edinburgh

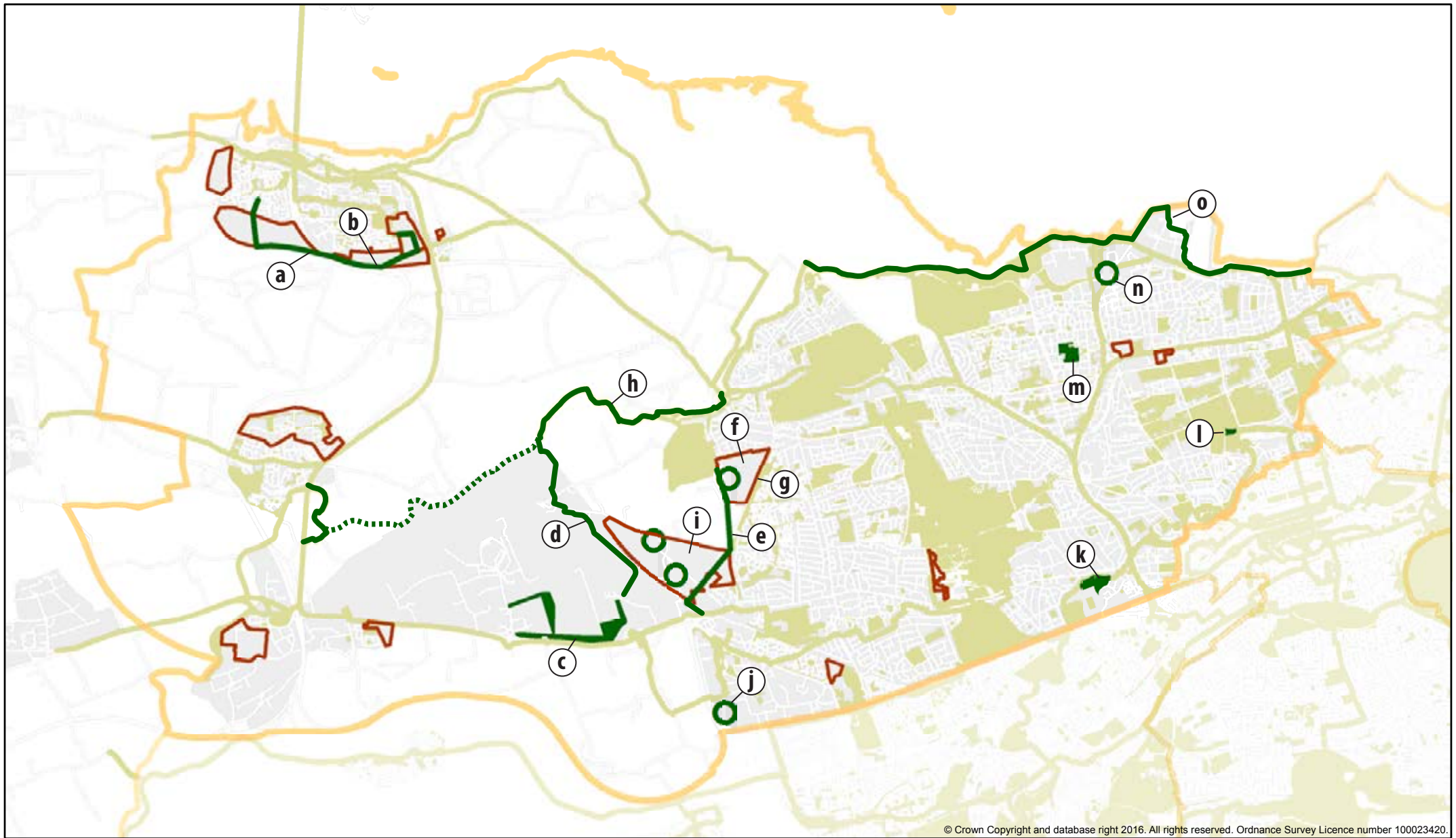
Open Space Action Plan (March 2017)

j)	Edinburgh Park/South Gyle	Green Network	Continuation of the existing north to south greenspace corridor and creation of new pedestrian and cycle links through the site.	Developer	Not known	Developer (Del 4)	With development	Not started
k)	Roseburn Public Park	Play Space	Improve to 'good' play value.	Parks, Greenspaces and Cemeteries	£80,000	No Council budget allocation. To be met by external funding.	2016-21	Consultation undertaken and play area plan agreed with local community.
l)	Inverleith Depot	Large Greenspace	Potential for addition to Inverleith Park and conversion to greenspace if the Council's review of depots determines it is no longer required. LDP reference GS8.	Council	n/a	Council	n/a	Not due
m)	West Pilton Public Park	Play Space	Improve to 'good' play value	Parks, Greenspaces and Cemeteries	£140,000	No Council budget allocation. To be met by external funding.	2016-21	Not started
n)	Granton Waterfront: Central Development Area	Green Network	New ~1 ha open space as part of masterplan for the area.	Developer	£250,000	Developer (EW 2b)	2016-21	Not started

North West Edinburgh

Open Space Action Plan (March 2017)

o)	Waterfront Promenade	Green Network	The Promenade will form a continuous walkway/cycleway of almost 17 km extending from Cramond in the west to Joppa in the east.	Planning and Transport, Developers.	By section	Economic Development; Planning and Transport; Developers	Long-term term proposal 2016-2037.	Cramond to Hanging Craig to north of West Shore Road complete.
					£694,000	Economic Development	Unfunded. External funding to be sought.	Remaining section to north of West Shore Road designed.
					£80-100,000	Planning and Transport	Unfunded. External funding to be sought.	Lower Granton Road
					Not known	Developers	With Development	Granton Harbour



Legend

- Greenspace Action
- Open Space and Core Paths Network
- Indicative Greenspace Actions
- LDP Housing Proposal

**North West Locality
Strategic Greenspace Actions**

For further information contact:

Planning & Transport
The City of Edinburgh Council
Waverley Court
Level G.3
4 East Market Street
Edinburgh EH8 8BG

Telephone: 0131 529 3550
email: openspacestrategy@edinburgh.gov.uk
Website: www.edinburgh.gov.uk/openspacestrategy



HAPPY TO TRANSLATE

Edinburgh City Council

Edinburgh City Council - Kòpòlòs Pròtèktòs