



North East Locality Open Space Action Plan

March 2017

◆ EDINBURGH ◆
YOUR COUNCIL – YOUR ENVIRONMENT

Introduction

This is one of four Open Space Action Plans to support delivery of Open Space 2021, Edinburgh's Open Space Strategy.

Open Space is a key element of Edinburgh's physical, social and environmental fabric and Open Space 2021 sets guiding standards for existing and new open space provision as the city grows.

Through standards based on open space quality, size and distance from homes, the Strategy aims to increase the number of people that can benefit from greenspaces that are sustainably managed, biologically diverse and contribute to health and wellbeing.

The Open Space Profile shows how the Locality compares to the overall picture of open space across the city, highlighting changes to provision.

It is a working plan, to be reviewed periodically to capture collective efforts which lead to the improvement and extension of Edinburgh's green network. Actions, including estimated costs, may be subject to review, further feasibility studies and change.

The Action Plan sets out proposals to help reduce inequalities in access to good quality open space and play provision. In time, it will reflect local environment priorities emerging through co-production of Locality Improvement Plans by Community Planning partners.

The first version shows citywide priorities identified by Edinburgh's annual parks quality assessment and actions carried forward from the existing Play Area Action Plan (2011-16) and previous Open Space Strategy (2010).

The Action Plan will co-ordinate ongoing open space management actions with those relating to development, including changes arising from individual planning decisions and the delivery of new parks and play areas through the adopted Edinburgh Local Development Plan (LDP).

Further details may be included as related strategies, guidance and projects are progressed, in particular those relating to allotments and food growing, biodiversity, climate change adaptation, outdoor sports facilities, green networks and play.

Open Space Profile

Audit

The Open Space Audit (2016) recorded urban open spaces over 500 square metres within the Locality and categorised these by their main function or type.

Changes to greenspace provision since 2009/10 include:

- Upgrading of the Restalrig Path between Easter Rd and Leith Links;
- Improvements to the quality of several large public parks to meet standards, including: Jewell Park and Hunter's Hall Park. Leith Links has improved to 'fair' quality but remains below the standard expected for a 'Premier Park';
- Portobello Park became the site for the New Portobello High School;
- New play provision was created at Northfield Drive whilst play space at Leith Fort Street was removed as part of housing regeneration;
- Allotment provision has expanded, including within existing parks and amenity greenspace e.g. Baronscourt Park, Northfield Drive and Greendykes;
- Several outdoor sports facilities have been adapted to other uses including the establishment of Leith Community Croft at the former Leith Links tennis courts and a new tennis court has been provided at the bowling green. Two bowling greens at Broughton Road have been turned into play space for Broughton Primary School;
- Phase 1 of the Niddrie Burn restoration (de-culverting works) has been completed;
- The first section of a multi-user path linking Craigmillar Castle Road, Greendykes Road and Little France Drive has been completed. A masterplan for the wider Little France Parkland (South East Wedge) has been prepared but delivery remains outstanding; and
- Redevelopment at Newcraighall North has resulted in the loss of part of the semi-natural greenspace of the disused rail embankment to be replaced by a new local greenspace and allotments.

The following maps show a picture of where Edinburgh's greenspace standards from Open Space 2021 are being achieved and where there are deficiencies in access to greenspaces or play areas. To reduce inequalities in access to provision, quality data is mapped against the 20% most deprived areas in Scotland from the Scottish Index of Multiple Deprivation (SIMD - 2016).

North East Edinburgh

Open Space and Action Plan (March 2017)

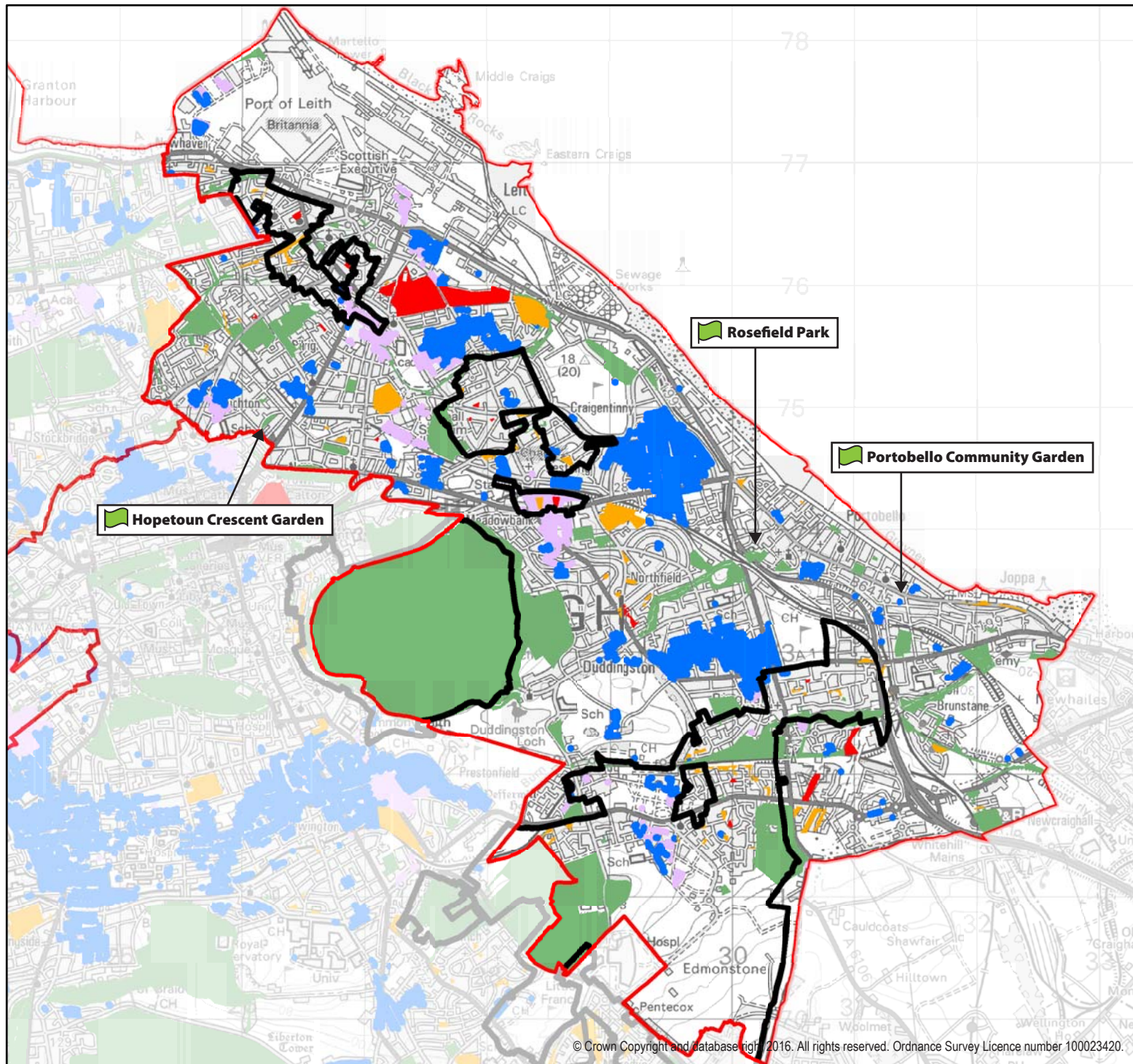
Local Greenspace Standard

Open Space 2021 requires all homes to be within 400 metres walking distance of a good' quality, accessible greenspace of at least 500 sq.m.

79.7% of homes in the North East Locality are served by the local greenspace standard by comparison with **87.7%** across the city. Some **30.3%** of homes are not served by the standard, represented by the areas shown in blue in the map overleaf. Residential areas which are served by the standard are indicated by the black and white base map only, whilst places highlighted in pink reflect improvements in access to greenspaces since 2010.

Areas not served by the standard include: residential areas to the north and south of Leith Links; to the south of Craightinny golf course and housing between Duddingston Road and Milton Road West. These tend not to be areas identified in the Scottish Index of Multiple Deprivation as within the 20% most deprived areas in Scotland.

Local greenspaces awarded a Green Flag in 2016 include: Rosefield Park, Hopetoun Crescent Garden and Portobello Community Garden.






Legend

Quality grade



Good Fair Low

-  Homes now served by standard but not in 2010
-  Homes without access to a good quality local greenspace

-  Scottish Index of Multiple Deprivation 2016 (20% most deprived areas in Scotland)

-  Green Flag Award 2016/17

North East Locality
Access to Local
Greenspace in 2016

Large Greenspace Standard

Open Space 2021 requires all homes to be within 800m walking distance of an accessible large greenspace of at least 2 hectares.

- **All newly created large greenspaces should be of 'good' quality regardless of type**
- **Council managed large greenspaces should be of 'good' quality for City Parks, Community Parks and Recreation Grounds and 'good+' for Premier Parks and Natural Heritage Parks.**

76.2% of homes in the North East Locality are served by the large greenspace standard by comparison with **79%** across the city. Some **23.8%** of homes are not served by the standard, represented by the areas shown in blue in the map overleaf. Residential areas which are served by the standard are indicated by the black and white base map only, whilst places highlighted in pink reflect improvements in access to greenspaces since 2010.

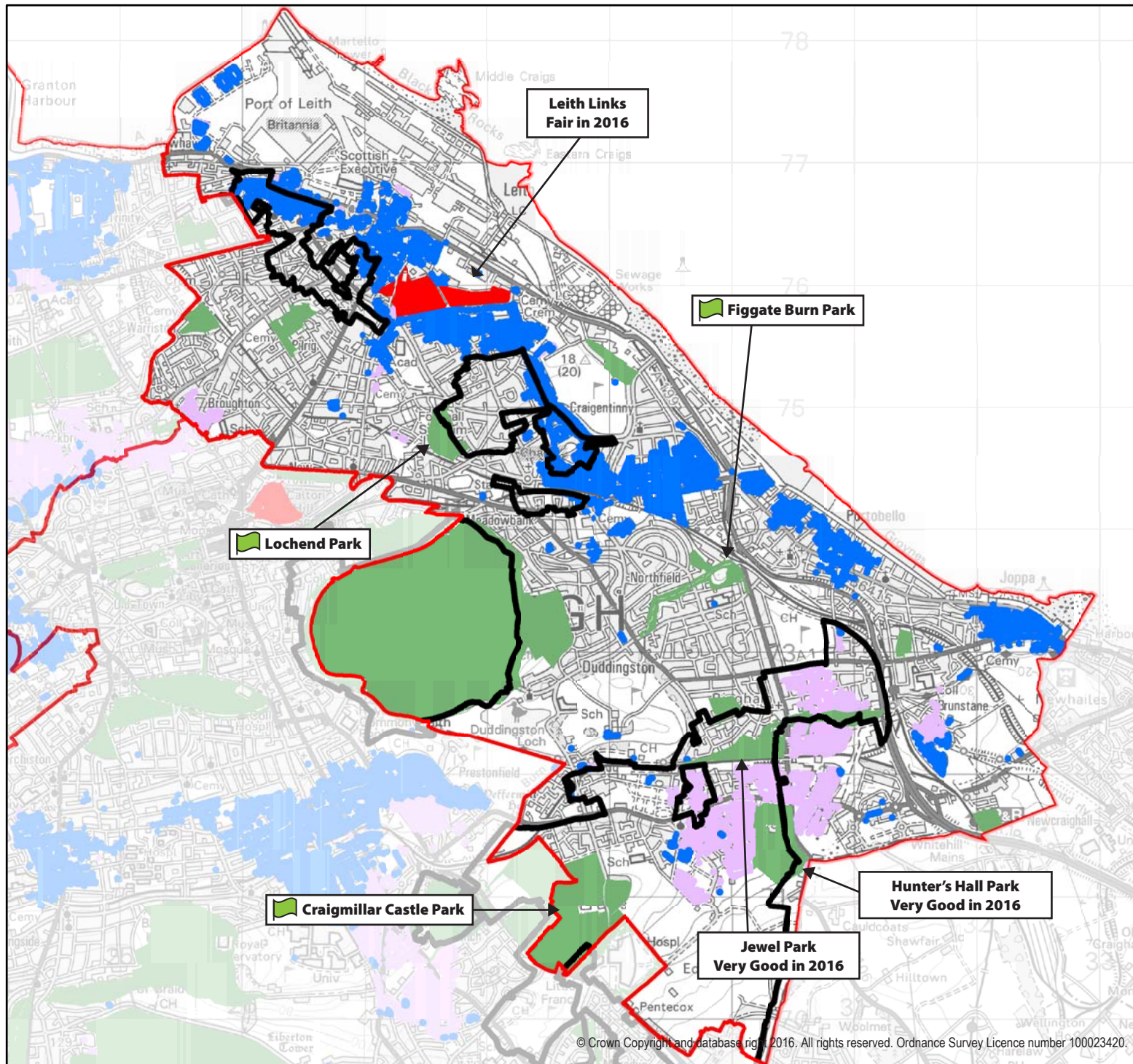
Since 2010, the Parks Quality Score of the following parks has improved to meet the large greenspace standard: Jewell Park and Hunter's Hall Park.

Portobello Park became the site for the new Portobello High School and as a result a new large greenspace called Treverlen Park is to be created on the site of the existing High School.

Leith Links remains below the Good+ standard, resulting in a large number of homes deficient in terms of access to a large greenspace, to the south of Salamander Street, Ocean Drive and Commercial to the north, the Restalrig Railway Path to the south and east and South Fort Street and Great Junction Street to the south and west. This includes some areas identified in the SIMD 2016 as within the 20% most deprived areas in Scotland.

Western Harbour remains deficient in terms of access to a large greenspace with parts of Portobello and Joppa beyond 800 m from a large greenspace.

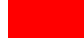
Large greenspaces awarded a Green Flag in 2016 include: Lochend Park, Figgate Park and Craigmillar Castle Park.





Legend


Large Open Space

 meeting standard

 not meeting standard

 Homes now served by standard but not in 2010

 Homes without access to a good quality local greenspace

 Scottish Index of Multiple Deprivation 2016 (20% most deprived areas in Scotland)

 Green Flag Award 2016/17

North East Locality
Access to Large
Greenspace in 2016

Play Access Standard

Open Space 2021 requires all homes to have access to at least one of the following:

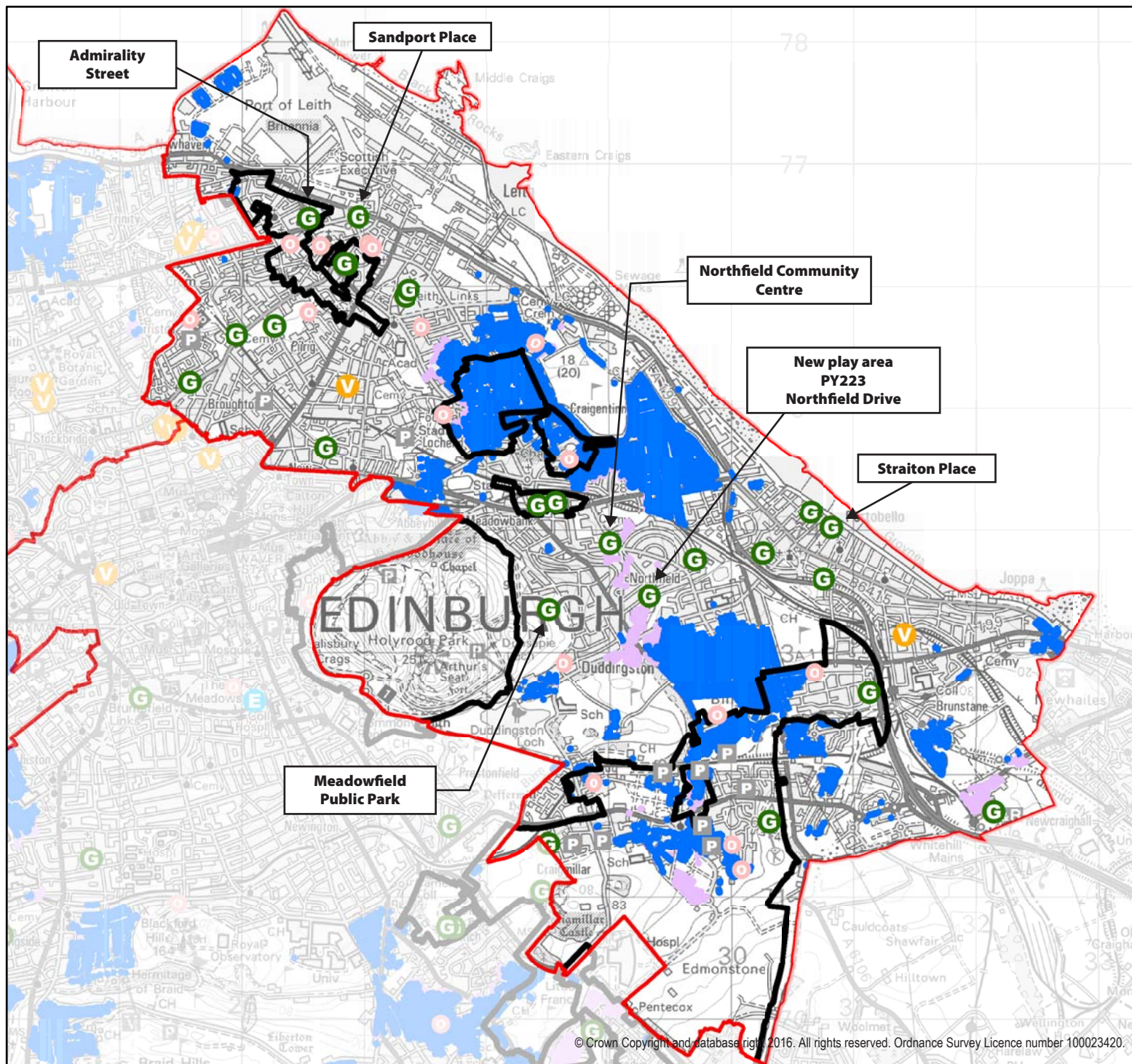
- A play space of good play value (51 – 70) within 800 metres walking distance
- A play space of very good play value (71 – 100) within 1200 metres walking distance
- A play space of excellent play value (101 +) within 2000 metres direct distance

80% of homes in North East Edinburgh are served by the Play Access Standard by comparison with 67% citywide. Some 20% of homes are not served by the standard, represented by the areas shown in blue in the map overleaf. Residential areas which are served by the standard are indicated by the black and white base map only, whilst places highlighted in pink reflect improvements in access to greenspaces since 2010.

The following play areas have been improved from 'fair' to 'good' play value: Sandport Street, Admiralty Street, Meadowfield Public Park, Northfield Community Centre and Straiton Place. New play provision was created at Northfield Drive.


Areas not served by the standard include Restalrig, Lochend and Craigentenny, Duddingston, Niddrie, Craigmillar and Gilberstoun

Parts of the city underlined above have been identified in the Scottish Index of Multiple Deprivation as within the 20% most deprived areas in Scotland (SIMD 2016).






Legend



PY 123 New Play Spaces are shown with a PY site ref.

 Scottish Index of Multiple Deprivation 2016 (20% most deprived areas in Scotland)




Play Spaces contributing to standard

-  Play space of 'Excellent' Play Value
-  Play space of 'Very Good' Play Value
-  Play space of 'Good' Play Value

Access to Play Space from homes within urban area

-  Homes now served by standard but not in 2010
-  Homes still not served by the standard in 2016

Other Play Spaces not contributing to standard

-  Stand alone Ball Court
-  Other Council
-  Other non-Council

North East Locality Play Area Access in 2016

North East Edinburgh

Open Space and Action Plan (March 2017)

Allotments and Community Growing

Existing allotments include: Claremount Park, Restalrig, Prospect Bank, Pilrig Park, Cambridge Ave, Leith Links, Warriston, Craigentiny, Findlay Ave/Sleigh Drive, Telferton and Portobello East. New provision includes Albert Street, Hawkhill and Nisbet, Baronscourt, Northfield Drive and Greendykes.

Community Growing: Through the Edinburgh Biodiversity Plan, Parks, Greenspaces and Cemeteries, Edible Edinburgh, Edinburgh and Lothians Greenspace Trust and Edinburgh Living Landscape are working to increase create community gardens in areas of deprivation subject to funding. The Council's housing investment strategy is also investigating use of land to support tenants to grow fruit and vegetables.

Outdoor Sports Facilities

A new Sport and Physical Activity Strategy will be prepared to examine demand and capacity for outdoor sports facilities. The Open Space Strategy continues to support the long-term objective to direct investment to multi-pitch venues.

Cemeteries and Burial Grounds

Quality surveys will be carried out to identify those cemeteries and burial grounds which could be improved to benefit public access to greenspace. Friends of Groups will be supported to contribute towards the improvement of historic burial grounds, through volunteer activities and fund-raising, in recognition of their heritage and recreational value as local greenspaces.

The Green Network

The Water of Leith and North Edinburgh Paths terminate in the northeast at Leith and Newhaven, providing links back to the city centre to the south. The Restalrig Railway Path is part of a route connecting the shore in Leith with Portobello via Leith Links. To the south and east, the Braid Burn path connects from Craigmillar Castle Park to the shore and Promenade at Portobello via Figgate and Rosefield Parks. It intersects with the Innocent Railway Path at Duddingston to the southeast of Holyrood Park, where the Innocent Railway leads eastwards via Jewel Park, Magdalene Glen and the Brunstane Burn to Joppa beyond the east end of the Promenade. Craigmillar Castle Park also provides links to the south to the Burdiehouse Burn Valley Park.

North East Edinburgh

Open Space and Action Plan (March 2017)

There are a number of Edinburgh Living Landscape (ELL) sites across the North East locality helping to improve biodiversity of the green network including: Keddie Park, St Andrew Place at the west end of Leith Links, Lochend Park, Baronscourt Park, Figgate Park, Rosefield Park and Hunter's Hall Park.

Across the city, The Edinburgh Biodiversity Partnership are progressing work to identify, develop and support strategic green network and landscape scale partnership projects to restore, create or reconnect habitats. Edinburgh & Lothians Greenspace Trust, City of Edinburgh Council Planning and Transport, Localities and Edinburgh Living Landscape are also carrying out ongoing cycle path management as funding opportunities arise.

Open Space Actions proposed in the North East Locality to meet the Strategy's standards are set out in the map and table below:

Map Ref	Action	Type	Description	Who's involved?	Estimated Cost	Funding	Timescale	Status
a)	Leith Links	Large Greenspace	Preparation of a new management plan and engagement on site improvements. Quality to be raised from 'fair' to meet quality standard for Premier Park.	Parks, Greenspaces and Cemeteries and local community	£2m* (including play)	Unfunded	2016-2021	Not started
			Seaward Extension - 2 ha open space proposal for sports pitches, allotments and other open space uses. (LDP Greenspace Proposal GS3)	Developer	£600,000	Developer	With development	Not started
		Play Space	Magnet Play Area (excellent play value) – possibly including a skate facility.	Parks, Greenspaces and Cemeteries and local community	£400,000	Unfunded	2016-2021	Edinburgh and Lothians and Greenspace Trust appointed to consult and fundraise for the project.

North East Edinburgh

Open Space and Action Plan (March 2017)

b)	Leith Western Harbour Park	Large Greenspace	5.2 ha publically accessible developer led parkland as part of wider Western Harbour EW 1a development including new park with new park with formal and informal recreational facilities for all ages. To be maintained by developer / private maintenance agency.	Developer	£1.04m	Developer, LDP Greenspace Proposal GS2	With development	Not started
c)	Trevelen Park	Large Greenspace	2 ha public park on site of existing Portobello High School.	Parks, Greenspaces and Cemeteries and local community	£1.0m	Funded	2018 start date	Consultation completed by ELGT and Craigentenny and Duddingston NP in 2015
d)	Brunstane	Large Greenspace	2 ha large greenspace to provide the large greenspace standard and sufficient open space to retain setting to category A Listed Brunstane House and Scheduled AM of Brunstane Moated Site.	Developer	Not known	Developer (HSG 29)	With development	Not started. Planning application submitted ref: 16/04122/PPP
		Play Space	Play Space to 'very good' play value to be provided.					
		Allotments	Provision of allotments to complement consented allotments at Newcraighall North.					
		Green Network	Establish new green network connections to Newcraighall village, Newcraighall Public Park, Gilbertstoun, The John Muir Way / Core Path 5 Innocent Railway, Queen Margaret University, Musselburgh and future developments in Midlothian.	Respective developers for each site, Planning and Transport		Developer	With development	

North East Edinburgh

Open Space and Action Plan (March 2017)

e)	Niddrie Burn Parkland	Green Network	Re-alignment of 1800 linear metres of the burn, associated works, landscaping, habitat creation and road, footpath and bridge construction. Planning permission 08/02474/FUL. LDP Greenspace Proposal GS5.	Planning and Transport; Parks, Greenspaces and Cemeteries.	£118,000	Parks, Greenspaces and Cemeteries	2017	Phase 1 of Niddrie Burn works complete, including river restoration, earthworks and road bridge. Phase 2 including footpaths, pedestrian bridge and tree planting at consultation stage (excludes lighting).
f)	South East Wedge Parkland (Little France Park)	Large Greenspace	Land around Craigmillar / Greendykes retained in the green belt will be landscaped to provide multi-functional parkland, woodland and country paths linking with parallel developments in Midlothian. LDP Greenspace Proposal GS4.	Parks, Greenspaces and Cemeteries.	£2.25m	Unfunded. Subject to external funding applications.	2016-2021	Masterplan prepared. Implementation of parkland not started. The first section of a multi-user path linking Craigmillar Castle Road, Greendykes Road and Little France Drive has been completed

North East Edinburgh

Open Space and Action Plan (March 2017)




g)	Loganlea Avenue	Play Space	Improve toddler play to 'good' play value.	Parks, Greenspaces and Cemeteries	£50,000	No allocated Council budget. Developer contribution (£20,000) secured via Loaning Rd development. Remainder to be secured by community fund-raising.	2016-2021	Not started.
h)	Niddrie House Square	Play Space	Improve to 'good' play value	Parks, Greenspaces and Cemeteries	£60,000	No allocated Council budget. Funding to be secured by community fund-raising.	2016-2021	Consultation undertaken.
i)	Newcraighall Public Park	Play Space	Improve to 'good' play value	Parks, Greenspaces and Cemeteries	£70,000	Developer contribution (£25,000) secured via new housing at Newcraighall North. Funding application submitted to WREN for £47,000.	2016-2021	Not started
j)	Jack Kane Centre and Hunter's Hall Park	Multi-pitch venue	Refurbishment of the Jack Kane Centre, new and refurbished all weather pitches, outdoor velodrome and bmx track	Communities and Families	£6m	Not known	2017/18	Planning application submitted 16/03107/FUL

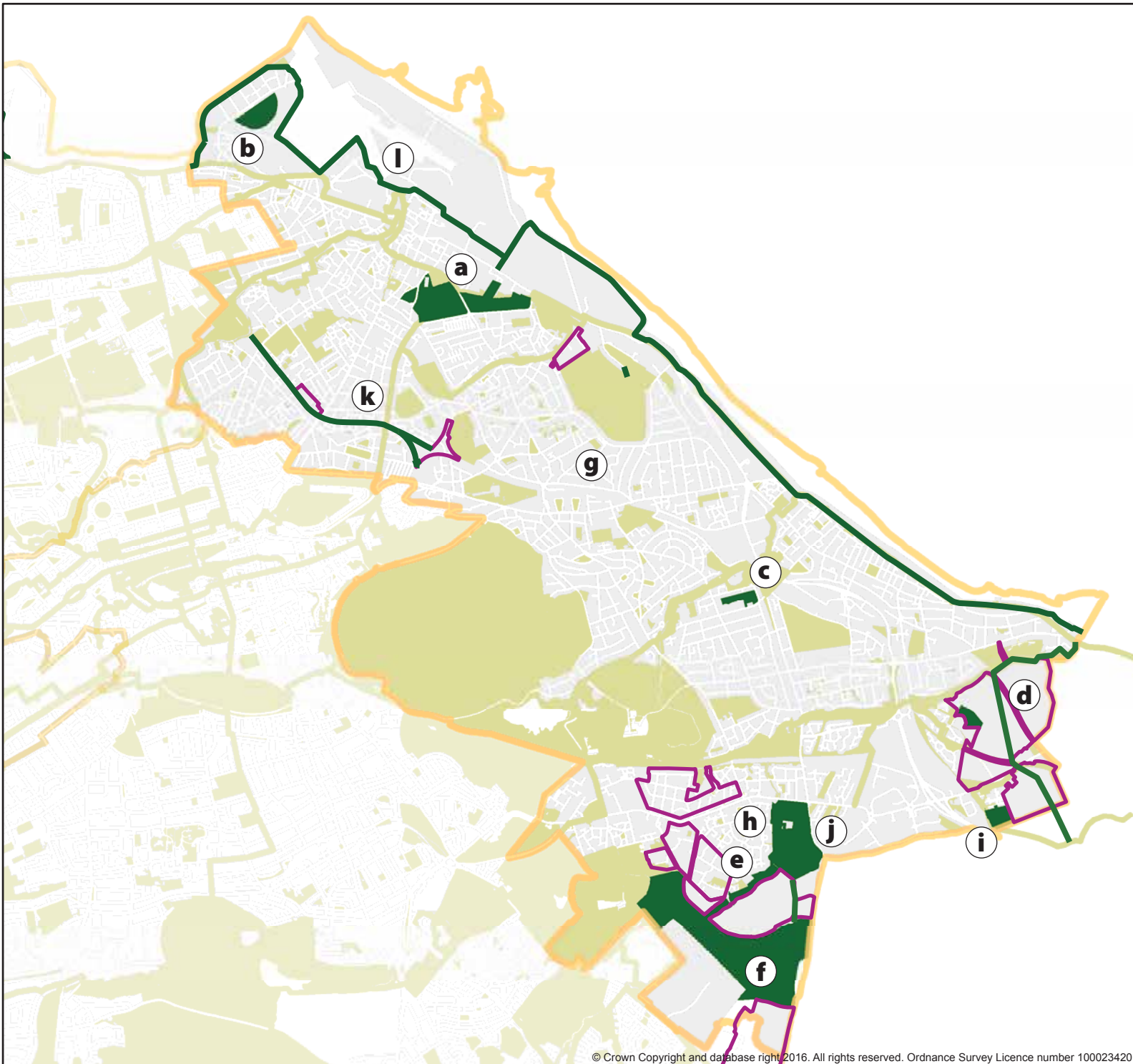
North East Edinburgh

Open Space and Action Plan (March 2017)

k)	Powderhall and/or Abbeyhill Railway	Green Network	New green corridors linking to Lochend Park and the Water of Leith from Abbeyhill/Meadowbank.	Planning and Transport, Developers.	Not known	No allocated Council budget.	Subject to agreement with Network Rail	Not started
l)	Waterfront Promenade	Green Network	The Promenade will form a continuous walkway/cycleway of almost 17 km extending from Cramond in the west to Joppa in the east.	Planning and Transport, Developers.	Not known	Developers.	Long-term proposal. 2016-2037	Leith Docks section in abeyance due to LDP Business and Industry allocation. Waterfront and Leith ADF considers an interim solution.

Legend

-  Greenspace Action
-  Open Space and Core Paths Network
-  LDP Housing Proposal



North East Locality Strategic Greenspace Actions

For further information contact:

Planning & Transport
The City of Edinburgh Council
Waverley Court
Level G.3
4 East Market Street
Edinburgh EH8 8BG

Telephone: 0131 529 3550
email: openspacestrategy@edinburgh.gov.uk
Website: www.edinburgh.gov.uk/openspacestrategy

EDINBURGH
THE CITY OF EDINBURGH COUNCIL



HAPPY TO TRANSLATE

Edinburgh City Council
Edinburgh City Council
Edinburgh City Council