



# *King George V and Scotland Yard Parks Management Plan*

*2014 – 2024*

◆ EDINBURGH ◆  
YOUR COUNCIL – YOUR ENVIRONMENT

## **Our vision...**

***“... to establish King George V and Scotland Yard Parks as sustainable, safe and enjoyable greenspaces to suit modern needs whilst maintaining the traditional aspects of a park steeped in history.”***

INVERLEITH

NEIGHBOURHOOD  
PARTNERSHIP



## **Table of Contents**

Scope of the Management Plan	4
Green Flag Award Scheme	4
<b><u>Where are we now?</u></b>	
Site Name	5
Site Description/Introduction	5
Facilities	5
Site Location	6
Adjacent Landowners	6
The Historic Environment	7
Conservation Status	10
<b><u>Area Committee and Ward</u></b>	
Elected Members	10
<b>Links with Local Strategies and Policy</b>	<b>11</b>
<b><u>Legislative Responsibilities</u></b>	
Dog Fouling (Scotland Act) 2003	11
Land Reform (Scotland) Act 2003	12
The Disability Discrimination Act (DDA) 1995	12
Children's Play Area – The European Safety Standard	12
<b><u>Site Surveys and Assessments</u></b>	
Tree surveys	13
<b><u>Friends Group</u></b>	<b>13</b>
<b><u>Public Safety and Security</u></b>	
Vehicles	14
Lighting	14
Park Management Rules	14
Paths	14
<b><u>Recent Improvements to the Park</u></b>	<b>15</b>
<b><u>Where we want to be?</u></b>	
<b><u>Analysis and Evaluation</u></b>	
A Welcoming Place	16
Healthy, Safe and Secure	17
Well Maintained and Clean	19
Sustainability	20
Conservation and Heritage	21
Community Involvement	22
Marketing and Promotion	23
Management	24

<b><u>Management Structure</u></b>	25
<b><u>How Will We Get There?</u></b>	
Development Plan	26
<b><u>Finance</u></b>	
Revenue funding	31
Capital Funding	31
Grants	31
<b><u>How will we know when we have arrived?</u></b>	
Monitoring and Reviewing	32
Measures of success	33
<b><u>Appendices</u></b>	
Historical Maps	35
Tree survey	37

## **Scope of the Management Plan**

This Management Plan is intended to cover the period from 2014 – 2024. The plan is a site specific document produced by The City of Edinburgh Council, North Parks Team. It is intended to offer guidance to all aspects of the management, maintenance and development of King George V and Scotland Yard Parks (hereafter referred to as the Park), providing a framework within which all future management is carried out. The plan enables an understanding on how and why decisions are taken, in relation to the reasoning behind the policies and proposals for action.

Despite the range and number of suggested actions that could be undertaken within the Park, this plan is meant to be implemented under the reality of financial restrictions and limited staff availability, therefore the actions are focused and those included are specific, realistic and achievable.

A yearly report on the actions of the development plan should be undertaken and recorded to ensure knowledge of actions and objectives is kept up to date. The management plan should be reviewed annually to take into account any major changes that may affect operations.

## **Green Flag Award Scheme**

The Green Flag Award is the benchmark national standard for parks and green spaces in the United Kingdom.

It was first launched in England and Wales in 1996 to recognise and reward the best green spaces in the country.

The first awards were given in 1997 and, many years later, it continues to provide the high level of quality against which our parks and green spaces are measured. It is also seen as a way of encouraging others to achieve high environmental standards, setting a benchmark of excellence in recreational green areas. The Green Flag Award Scheme began in Scotland in 2008.

Awards are given on an annual basis and winners must apply each year to renew their Green Flag status.

## **Where are we now?**

### **1.1 Site Name**

King George V and Scotland Yard Parks

### **1.2 Site Description/Introduction**

A pleasant, small park (1.773 acres) of winding paths, shrubberies, trees and lawns set in an interesting and historic part of the city.

The park attracts all sections of the community. Some come for a stroll, to walk the dog, to picnic at lunchtime, read their newspaper or to catch the sun and to enjoy some green space in a heavily build up part of town. A number are just passing through as a shortcut up to Royal Circus and Scotland Street. It is also a busy hub for cyclists since the reopening of Rodney Street Tunnel, which connects the park to Golden Acre path, part of the North Edinburgh Cycle Network.

The Park is well used and well regarded locally and this along with a number of facilities provides a destination for passive and active recreation. The Park accommodates a variety of uses and activities including a much loved toddler play area, teenage zone, basketball court and table tennis. It is a popular place for walking, jogging, exercising dogs and relaxing.

Neighbouring the Park is “The Yard” a purpose built indoor and outdoor adventure playground for children and young people with additional support needs.

The Park is freely accessible at all times.

### **Facilities**

Play areas for toddlers, juniors and teenagers

Football and Basketball court

Concrete table tennis table

Teenage shelter

Perimeter shrub and tree planting

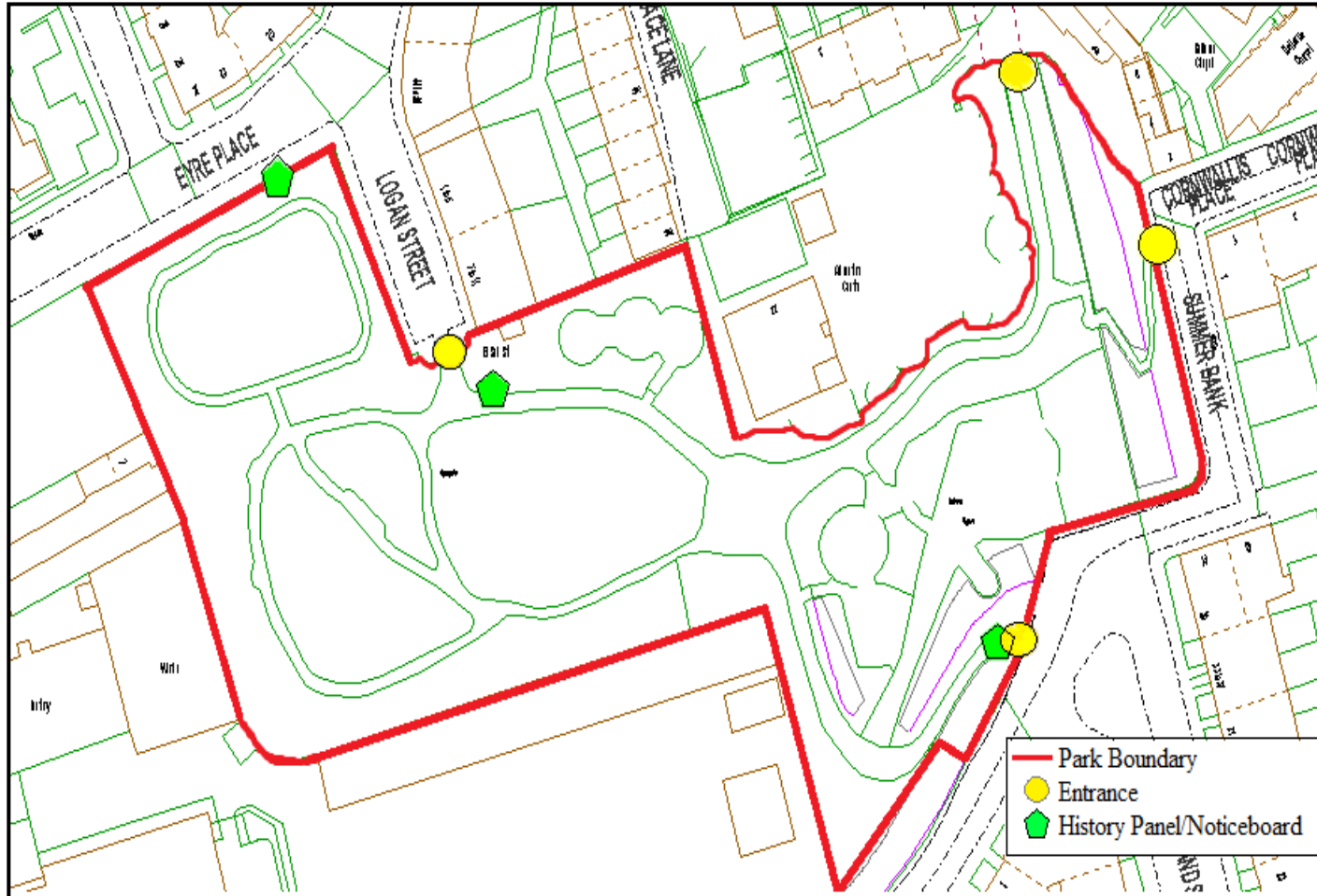
Spring bulbs: Snowdrops and Crocus

Seats and bins

Lighting

Path network

## Site Location



## Adjacent Landowners

Eyre Place, Logan Street, Eyre Place Lane and The Yard run along the northern edge of the park. Land to the West and South of the park is owned by The Royal Bank of Scotland. Royal Crescent also shares this Southern boundary. Summer Bank and Cornwallis Place are located along the Eastern boundary of the park.

National Grid Reference:  
NT 25311 74885

Historical maps of the site are shown in Appendix 1.

## The Historic Environment

King George V Park and surrounding area was occupied by The Canonmills Loch. This Loch was fed from two mills leads, diverted from the Water of Leith at Stockbridge. In hard winters, the Loch became the home of the Canonmills Curling Club, claimed to be the oldest of its kind. Canonmills Loch was drained in 1847.

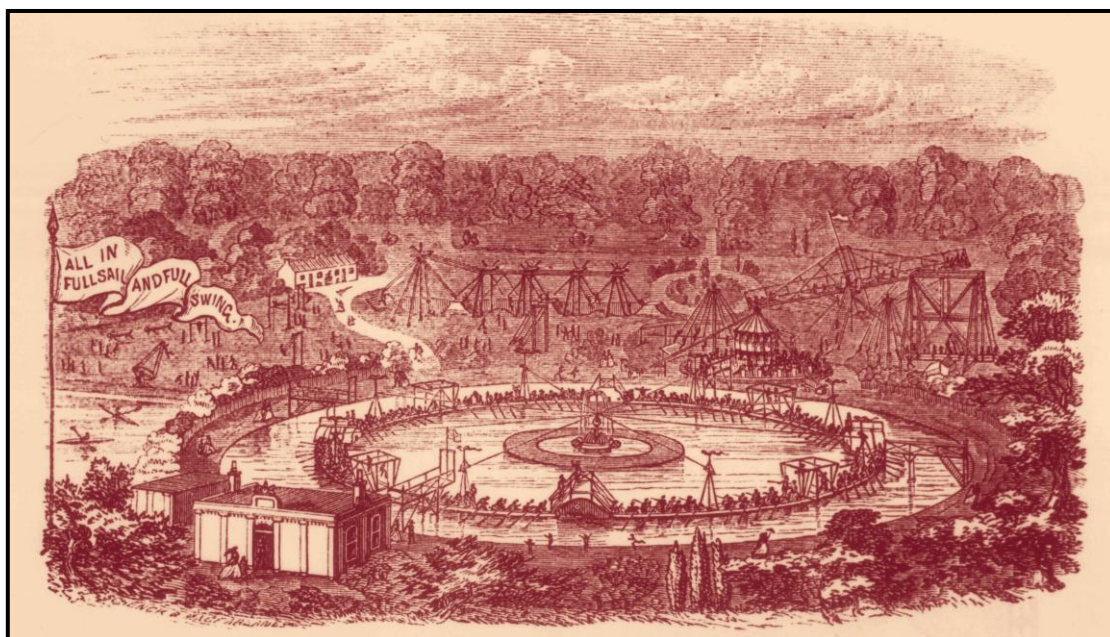


*Etching of Canonmills, by John W. Ewbank, 1825.  
Reproduced courtesy of [www.capitalcollections.org.uk](http://www.capitalcollections.org.uk)*

In 1860, thirteen years after Canonmills Loch was drained, the marshy land of the Haugh was also drained, making way for the ‘Gymnasium’ created by John Cox, an Edinburgh philanthropist. He designed it as somewhere for people to exercise and enjoy themselves at an affordable price.

Opened in April 1865, it contained some ingenious apparatus including a giant see-saw for two hundred people, a bicycle roundabout and a pendulum swing. In the summer, events with bands and shows were provided in a show hall. In the winter, bands played for skaters on a flooded and frozen area, which was illuminated in the evenings by coloured lights.





The Royal Patent Gymnasium

The main attraction at the Gymnasium was the Great Sea Serpent. It consisted for a 60 foot (18.2 metre) wide wooden 'boat' on a circular pond, 471 feet (143.5 metres) in circumference and held fast by wire ropes attached to a central pivot. This massive structure accommodated 600 seated rowers, with 250 paddlers and 8 paddle wheels to get the boat rotating in an undulating motion. The only one of its kind in Britain, the Gymnasium was very popular but suffered in the winter weather and was eventually replaced by the St Bernard's football ground.

Said to be descended from teams of the Third Edinburgh Rifle Volunteers, the 'Saints' took their name from St Bernard's Well by the Water of Leith at Stockbridge. Established in 1878, they moved from Stockbridge to the old Gymnasium site in 1880. Due to the remains of the apparatus still being present, the site was cramped and between 1889 and 1902 the team played in several other locations. During the First World War play was suspended. The ground was requisitioned and used for other purposes. However, in 1922 the site was bought back and again developed with a larger grandstand. But once again a World War intervened and the team never recovered. The last match was played in 1942 and the stands dismantled in 1947. The last surviving reminder of the club's existence is the gate at Royal Crescent that led down to the stands.



Plans for a railway line from Granton and Newhaven to Waverley were authorised in 1836 and a track laid in 1842. It passed through a tunnel under Rodney Street and through the south eastern corner of the Haugh where the Scotland Street Station was built.



*Rodney Street Tunnel.  
Photograph reproduced courtesy of Stenlake Publishing Ltd*

The Scotland Street Tunnel ceased to be used as a passenger railway line in 1868 following the addition of a new line to Abbeyhill and Trinity. It continued to be used as a coal storage and railway depot until the 1960s, when the track was lifted. Far from sitting idle, the tunnel has been used intermittently for a variety of purposes. It was the city's largest air raid shelter in WW2 with fresh water, drainage, electricity and space for 3,000 people. It was also used for various mushroom growing attempts in the late 19th and early 20th centuries, a radiation testing area by the University of Edinburgh in 1948 and as a vehicle storage area for Cochrane Garages Ltd in the 1980s.

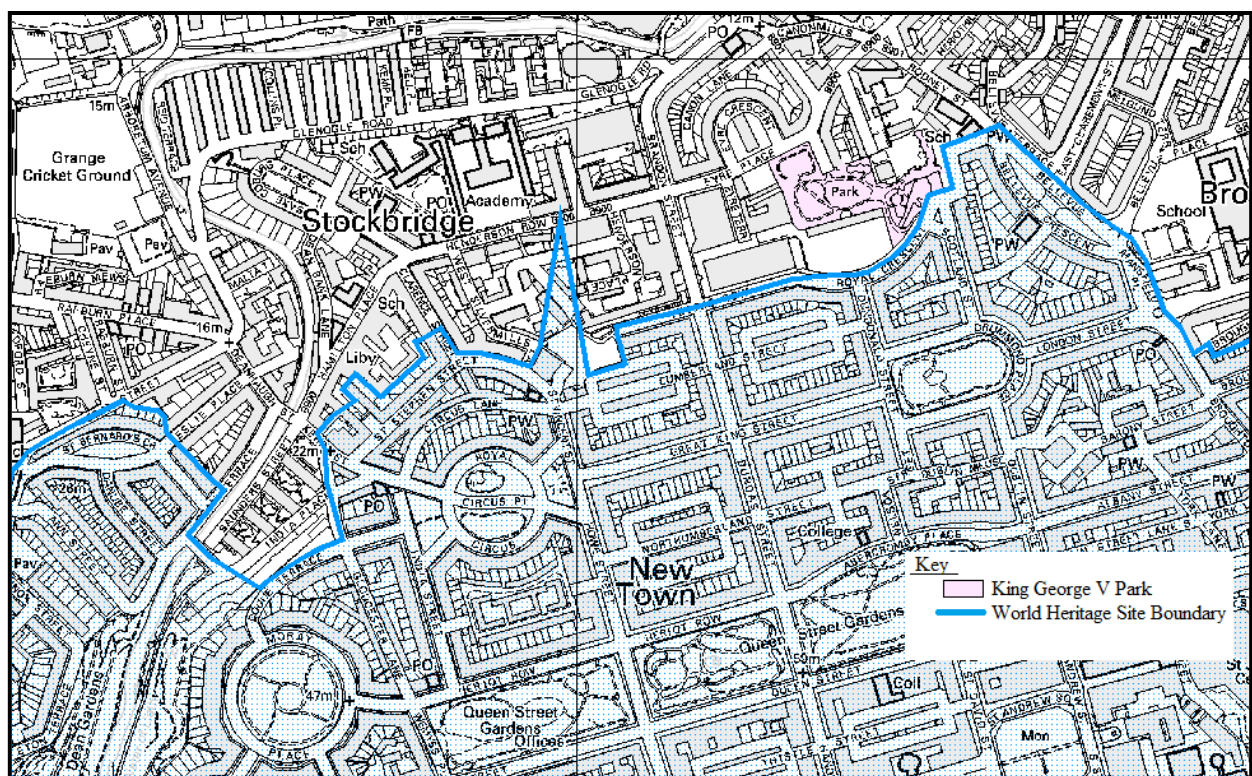
After the death of King George V on 20<sup>th</sup> January 1936, a National Memorial Fund Committee raised funds to purchase the playing fields in his memory. With the assistance of a grant, the Edinburgh Corporation purchased the St Bernard's football ground to create a new King George V Memorial Field or Park. The site was transformed to include tennis courts, a putting green and playground. It was opened in 1950 by the Duke of Buccleuch, the President of the Scotland branch of the National Playing Fields Association, now Fields in Trust.

A concerted community effort in the early 1980s led to a complete reconfiguration and regeneration programme being undertaken by the then City of Edinburgh District Council and a derelict space was transformed. However, subsequent years of neglect took their toll and by 2002 the park had become run down once again. At this point a group of concerned local residents formed the Friends, with the aim of working with the City of Edinburgh Council to improve the appearance of the park and the facilities it offered people of all ages.

## Conservation Status

The Park is classified within the Edinburgh Public Parks and Gardens Strategy as a “City Park”. City Parks are defined as” Parks providing facilities that are used by people who may live anywhere in the city. These are likely to be larger in size and the facilities provided will be more specialised, with many including sports pitches and other formal facilities. However, these parks may also function as the Community Park for some people by virtue of their location and the absence of other smaller areas. Access will be by car, bus, bicycle or on foot.

The Park is located just outside a World Heritage Site but within a Conservation Area. Scotland Street Tunnel 1965 and Rodney Street Tunnel 1974 are listed structures.



## Area Committee and Ward

Inverleith Ward      Ward Councillors: - Lesley Hinds (Labour)  
Iain Whyte (Conservative)  
Nigel Bagshaw (Green)  
Gavin Barrie (SNP)

MSP – Malcolm Chisholm (Edinburgh Northern and Leith, Labour)

MP – Mark Lazarowicz (Edinburgh North and Leith, Labour)

## **Links with Local Strategies and Policy**

There are many Council policies and plans (available on request) which are relevant to the Park, these include the following:

- Single Outcome Agreement 2012-2015
- City of Edinburgh Council Strategic Governance Plan 2012-2017
- Services for Communities Service Plan 2011-2014
- The Community Plan for Edinburgh 2008 - 2014
- Local Community Plans
- Edinburgh Local Plan (2007)
- Edinburgh Public Parks and Gardens Strategy (2006)
- Edinburgh Open Space Strategy (2010)
- Core Path Plan
- Play Area Action Plan (2011-2016)
- Edinburgh Local Biodiversity Action Plan 2010 - 2015
- Sustainability

Detailed information on each of the policies above can be viewed in the Strategic Parks Management Information for North Edinburgh.

## **Legislative Responsibilities**

As land owner and manager of the Park, the City of Edinburgh Council has many legal responsibilities. The relevant Act's are listed below;

### **Dog Fouling (Scotland Act) 2003**

**Aim:** This Act has two principal aims. The first; to amend the offence of dog fouling so that the offence consists of failing to clear up after a dog rather than of allowing a dog to foul. The second; to establish new enforcement provisions in connection with the offence by enabling local authorities and police constables to issue fixed penalty notices to persons suspected of committing the offence.

**Relevance:** One of the many user groups who use this area does so for the purpose of walking their dog.

## **Land Reform (Scotland) Act 2003**

**Aim:** Part 1 of the Act establishes a right of access to most of Scotland's Countryside and Open Water, for recreational, educational and certain other purposes and a right to cross such land. These rights exist only if they are exercised responsibly. Some of the provisions for that purpose are also extended in relation to rights of way and other rights. Part 1 of the Act also imposes certain duties on local authorities in relation to access on and over land and, in particular, requires them to draw up and adopt core paths plan for their area.

**Relevance:** Promotes responsible use of accessible land.

## **The Disability Discrimination Act (DDA) 1995**

**Aim:** The DDA aims to end the discrimination that many disabled people have faced in the past and in some cases still do. This Act has been significantly extended; this includes the introduction of the Disability Discrimination Act 2005 which gives disabled people rights in the areas of: employment, education, access to goods, facilities and services. The Act now requires public bodies to promote equality of opportunity for disabled people.

**Relevance:** The majority of paths around the Park are tarmac or type one whin dust. These give easy access to people with mobility difficulties, wheelchairs or pushchairs. One of the entrances into the park is via a set of steps and step paths, not suited to people with mobility difficulties; these restrictions are due to terrain that cannot be modified enough to make access open to all.

## **Children's Play Area – The European Safety Standard**

**Aim:** The Standard recognises the developmental importance of play and risk. It is felt that children need to experience risk and the Standard is designed to prevent injuries with a disabling or fatal result or where a child may receive an injury in the event of an incorrect judgement on their part. It cannot remove all possibility of injury. Parental or care giver supervision is seen as crucial in reducing injuries to very young children. Increased accessibility for children with disabilities has been borne in mind to provide a balance between safety and challenge.

The strategic vision for the Edinburgh Play Strategy is that:

*Edinburgh will be a child friendly city where all children and young people have access to play opportunities which offer variety, adventure and stimulus. They will be able to play freely and safely and make choices about where, how and when they play.*

**Relevance:** All City of Edinburgh Council Play Areas are designed in house to meet BS EN 1176 Parts 1 – 11. Prior to 1998 all play areas were designed to meet BS 5696. All play areas are held on a data base called Playsafe produced by Public Sector Software Ltd. This system holds information on all City of Edinburgh Council play areas, including; type of equipment, installation date, type of surface, fences and bins.

## **Site Surveys and Assessments**

### **Tree Surveys**

All trees within the Park are managed by the City of Edinburgh Council Forestry Section of Parks and Greenspace. Hazardous defects in trees are reported to the Forestry Department for inspection and action as required. A tree survey has been undertaken on all the trees within the Park and is shown in Appendix 2.

### **Friends Group**

The Park is supported by the Friends of King George V and Scotland Yard Parks (hereafter referred to as The Friends); a voluntary community group who have been actively involved and consulted over past park management and development. The group were established in 2002 and membership of the Friends is open to anyone who cares about the park, whether they live or work in the area.

The cumbersome title assumed by the Friends of King George V and Scotland Yard Parks reflects the fact that the official name of the Park is the King George V Park, Eyre Place, whereas locally and unofficially it is known as Scotland Yard. The official name indicates that the western section of the Park came into being in the early post war years as a King George V Memorial Playing Field, with the National Playing Fields Association (now Fields in Trust) as its guardian trustees. The local name points to the origins of the eastern section which is the site of the former Scotland Street Goods Yard.

The objects of the Association are:

1. To conserve, preserve, protect and improve the area known as the King George V Park and Scotland Yard for the benefit of the public
2. To advance the education of the public about the history of the area
3. To promote provision of facilities which will encourage enjoyment and responsible use of the area by a wide range of the people who live and work in the locality

A newsletter is distributed twice a year and displayed in the park notice boards for the wider general public to view.

More information on the Friends Groups can be found on their website

<http://www.kgvsy.org.uk/>

## **Public Safety and Security**

All users of the Park are responsible for their own health and safety, however, regular safety checks of the Park are made.

Informal inspections are carried out by Council employees who enter the play areas as part of their daily duties (Park Ranger, Playgrounds Maintenance Officer and Task Force staff). They report obvious hazards to the Council's workshop engineers. In-house ROSPA trained staff inspect the equipment on a monthly basis. Any defects identified are either repaired immediately or isolated and made safe, for repair at a later date. Written records of inspections and works undertaken are held with the Workshops at Inverleith Park. Annual inspections and risk assessments, conforming to the Register of Play Inspectors International (RPII), are carried out on all the playgrounds by a qualified RPII Inspector and the inspection conforms to the requirements of BSEN 1176-11.

Signs located on the play area fencing contain contact details should members of the public wish to report any damaged or broken play equipment.

## **Vehicles**

Vehicular access to the Park is not permitted with the exception of authorised maintenance vehicles or where permission has been given to facilitate organised events. Vehicular movement is kept to a minimum at all times. There are no roads within the Park, however, access can be gained from the double gate off Logan Street or Royal Circus.

## **Lighting**

Lighting exists throughout the Park; this is maintained by the Street Lighting Section of Roads Services. Any lighting issues can be reported to Clarence on 0800 23 23 23.

## **Park Management Rules**

The site is governed by the City of Edinburgh Council's Management Rules for Public Parks and Greenspace, which are available to view in the Strategic Parks Management Information for North Edinburgh. ( Available on request)

## **Paths**

The site is patrolled regularly by the City of Edinburgh Council and all the main paths are monitored and maintenance is planned accordingly. The responsibility for mechanically sweeping all tarmac paths lies with Taskforce.

## Recent Improvements to the park

<b>Improvements undertaken since 2010</b>
<b>New bins throughout</b>
<b>Rodney Street Tunnel officially opened providing access to the North Edinburgh Cycle Network</b>
<b>Additional noticeboard installed along Eyre Place</b>
<b>Circular bench and Judas tree, <i>Cercis siliquastrum</i>, planted in centre of park</b>
<b>Boundary railing replaced at Logan Street entrance</b>
<b>Noticeboard relocated to Royal Circus entrance</b>
<b>Green Action days with Bellvue Chapel</b>
<b>Youth Shelter repainted</b>
<b>Scotland Street Tunnel Brick Wall removed and replaced with a galvanised steel screen, set back a few feet to create youth shelter</b>
<b>Bulb planting with Friends Group - Crocus</b>
<b>Concrete table tennis installed - Action For Children helped with site clearance</b>
<b>Re-instate steps up to Summer Bank – Neighbourhood Environment Programme funded</b>
<b>‘No Dog’s signs erected on entrances to play areas</b>
<b>Bulb planting with Friends Group - Snowdrops</b>
<b>Plant up area near electricity box</b>
<b>Biffa and capital funding for new play equipment and seating/steps</b>
<b>Wildflower meadow created</b>
<b>Herbaceous perennials planted in bed at entrance on Logan Street entrance</b>
<b>Play area painted</b>



## Where we want to be?

### Analysis and Evaluation

#### A Welcoming Place

#### Objective

*The overall impressions for any member of the community approaching and entering the Park should be positive and inviting, regardless of the purpose for which they are visiting.*

**Welcoming** Entering the Park from Logan Street through the ornate entrance pillars, featuring a unicorn and lion, visitors are welcomed by one of the parks recently installed history panels. To the right of the entrance a landscaped herbaceous bed adds colour and interest before opening onto grass parkland. The most popular entrance to King George V Park is from Rodney Street Tunnel on the North East side of the park, opening up onto newly laid paths, a wildflower meadow and spring bulbs before the path meanders round to the children's play area. From the wide entrance on Scotland Street a noticeboard and history panel immediately catch the visitor's attention. From here the gentle sloping path overlooks the play area, leading to the centre of the Park and ornate circular bench. Recently installed steps from Summer Bank overlook the entire Park.

**Good Safe Access** Vehicular access to the Park is not permitted with the exception of authorised maintenance vehicles or where permission has been given to facilitate organised events. Vehicular movement is kept to a minimum at all times. While there is no free parking around the immediate vicinity, paid on street parking is available on most streets surrounding the Park. Public transport regularly passes Dundas Street, Rodney Street and the Canonmills area within easy walking distance to the Park. Although the Park serves the immediate community who generally walk to the Park, Rodney Street Tunnel is used as a gateway for many cyclists to the North Edinburgh Cycle Path Network.

**Signage** Although there is no signage directing visitors to the Park, threshold signs at the entrances provide a welcome for visitors. A 'Welcome to' threshold sign is located at all four entrances to the Park. The signs are of consistent design in all of Edinburgh's Parks. Two history panels and two notice boards also welcome visitors. (See Site Location Map on page 6 for locations). The notice boards are updated regularly, providing information on improvements within the Park, local events, surveys and litter picks, in addition to events and meetings the Friends organise. Contact details for the Community Parks Officer are also advertised. There is also a Welcome sign at the entrance to the toddlers play area, this has faded over the years and is now due to be replaced with a new colourful design.

**Equal Access** The network of paths is well used by pedestrians and cyclists who traverse across the Park. Paths can be used by cyclists and pedestrians following the implementation of the Land Reform (Scotland) Act, which promotes responsible use of accessible land. The Scottish Outdoor Access Code also encourages responsible use. Paths within the Park are surfaced in Bitmac and whin, both suitable for wheelchair users. Entry to the park from Summer Bank is by means of a set of wooden steps, unsuitable for wheelchairs. These steps are however DDA compliant but, the nature of this entrance makes it difficult to improve further.

The park is freely accessible at all times.

## **Healthy, Safe and Secure**

### **Objective**

*The Park must be a healthy, safe and secure place for all members of the community to use. Relevant issues must be addressed in the management plan and implemented on the ground. New issues that arise must be addressed promptly and appropriately.*

**Safe Equipment and Facilities** The neighbourhood team work to co-ordinate activities and develop closer links between the Grounds Maintenance team, Community Parks Officer, Park Ranger and the Friends Group. This, along with working with the local community, park users, interest groups and volunteers will help to give a greater sense of ownership and assist us in maintaining the Park to the highest standards that can be achieved with the collective resource available. Day to day, park users and the Friends Group also highlight issues as soon as they arise. Informal inspections are carried out by Council employees who enter the play areas as part of their daily duties (Park Ranger, Playgrounds Maintenance Officer and Task Force staff). They report obvious hazards to the Council's workshop engineers. Contact details for the Community Parks Officer are located in the park noticeboards for visitors to report problems, in addition to contact details on threshold and play area signs.

**Personal Security in the Park** Council staff enter the Park on a daily basis, which helps to provide a sense of security. The Park is busy throughout the day with dog walkers and is an important through route for pedestrians and cyclists. The Park is not locked at night but a lighting column illuminates the main through route.

**Dog fouling** The Park is well used by local residents for walking their dogs. The Council's Environmental Wardens monitor evidence of dog fouling and promote responsible dog ownership. If necessary the Environmental Wardens can enforce the Dog Fouling (Scotland) Act 2003. Dogs are allowed off the lead in the Park but signs located at the entrances to play areas restrict dogs from entering these areas. The City of Edinburgh Council does not have separate bins for dog waste, bins located throughout the park are for disposal of litter and dog fouling.

**Appropriate Provision of Facilities** The Park is an important amenity for the local community, providing an accessible green space for recreation and relaxation. The wide range of play equipment available for children of all ages means that both play areas are well used and are maintained to a high standard. New play equipment was installed in the teenage zone in 2013. Within the Park there are a mix of seating including black metal seats, blue benches within the play areas, a teenage seating shelter and a circular bench in the centre of the Park. There are presently 8 litter bins located throughout. These bins have all been replaced in recent years in order to rationalise a standard style from the Broxap "Derby" range.

The Council's Play Area Action Plan 2011-2016 (available to view in the Strategic Parks Management Information, available on request) aims to guide the improvement of existing play areas, sets out a vision for future play area provision and prioritises future investment. The Plan was approved by the Council's Policy and Strategy Committee in June 2012.

**Quality of Facilities** The overall quality of facilities in the park is of good condition. Regular visits from parks staff identify any areas that need attention. The variety and quality of play equipment makes the Park an exciting and interesting place to be and invites visitors to return time and time again.

## **Well Maintained and Clean**

### **Objective**

*For aesthetic as well as health and safety reasons, issues of cleanliness and maintenance must be adequately addressed.*

**Litter and Waste Management** There is a good provision of bins which are emptied daily. The Park is also litter picked by the neighbourhood cleansing teams when the bins are emptied, ensuring that the Park remains litter free. In periods of good weather, when the Park is heavily used, litter removal and emptying bins may require to be increased to twice a day.

**Grounds Maintenance** Generally the Park is maintained to a good standard but more can be done to raise the quality of the horticultural elements. Further improvements to grounds maintenance should be considered including moving towards performance based standards rather than frequency based. Regular visits of the Park will be included in the Development Plan for the Community Parks Officer and Park Ranger and other site inspections carried out from time to time, to monitor standards throughout the period of the Management Plan and check the progress of improvements. The City of Edinburgh Council also undertakes internal Parks Quality Assessments. These are carried out annually and highlight areas where the standards may have dropped.

**Building and Infrastructure Maintenance** Graffiti and damage resulting from anti-social behaviour are dealt with promptly. Edinburgh Council has a zero tolerance policy to offensive graffiti and aim to have it removed within 24 hours. The Park Ranger will remove graffiti where possible otherwise details are passed to the specialist graffiti treatment unit.

**Equipment Maintenance** In-house ROSPA trained staff inspects play equipment on a monthly basis. Any defects identified are either repaired immediately or isolated and made safe, for repair at a later date. Written records of inspections and works undertaken are held with the Workshops at Inverleith Park. Annual inspections and risk assessments, conforming to the Register of Play Inspectors International (RPII), are carried out on all the playgrounds by a qualified RPII Inspector and the inspection conforms to the requirements of BSEN 1176-11.

## **Sustainability**

### **Objective**

*To ensure that the methods used in maintaining the Park and its facilities are environmentally sound and are based upon best practice. To increase biodiversity of the Park.*

**Environmental Sustainability** Through the Edinburgh Local Biodiversity Action Plan (LBAP), the City of Edinburgh Council aim to conserve and enhance Edinburgh's natural heritage. The council continues to work on a number of initiatives towards more sustainable practices, such as peat reduction, waste recycling and increasing biodiversity. Vegetation clearance is scheduled to avoid nesting birds. A wildflower meadow has been created to increase biodiversity. No parking is available in the park therefore the majority of visitors to the Park are local residents who walk or cycle to the site. The main cycle route links into a city wide cycle/off road network to and from the city centre.

**Pesticides** The use of pesticides is kept to a minimum. A draft pesticide policy has been produced by the City of Edinburgh Council. It states, where appropriate, all non chemical alternative methods of weed control will be investigated and implemented depending on the requirements of the site, local environment and its users. This will also take into consideration, all available resources and any cost implications, which could impact on the local service delivery.

**Peat use** The only use of peat by the Parks and Greenspace Unit is in the production of bedding plants at the Council's Inch Nursery. Peat is rarely used within the Park. Root balls of new planting may contain peat.

**Waste Minimisation** The Council is keen to reduce, re-use and recycle wherever possible. Any green waste collected from the park is composted, recycled and re-used. Where possible tree chippings are spread directly back onto areas as a weed control measure and when the grass is cut the clipping are left on site. Recycling points are provided near the entrance to Rodney Street Tunnel but no recycling bins located within the park.

**Woodland Management** The Park contains a variety of tree stock and the Council has undertaken a tree hazard management assessment by the Forestry who manages the trees. (See Appendix 2) Careful consideration will need to be given on how the tree stock is managed within the park as trees mature and how others are replaced as a result of disease, decay or damage.

## **Conservation and Heritage**

### **Objective**

*Particular attention should be paid to the conservation and appropriate management of natural, landscape and structural features.*

**Conservation Fauna and Flora** The recent creation of a wildflower meadow significantly contributes to increasing local biodiversity and helps meet criteria for Bee Conservation within the LBAP. Bat boxes were installed into the Park several years ago, sadly some of these have been damaged and removal is required. Bird boxes have also been installed in the Park.

**Conservation Landscape** The layout of the park has not changed since around 1950. Every effort has been made to maintain and conserve the unique layout of this historical park.

**Conservation Buildings** There are no buildings owned by the City of Edinburgh Council within the Park, however an electrical substation is located near the entrance on Logan Street. This is maintained and managed by Scottish Power. Rodney Street and Scotland Street Tunnels are both listed structures and are managed and maintained by the City of Edinburgh Council, Transport, Bridges Team. Although not listed, the ornate pillars at the Logan Street entrance are of historic significance to the park and as such are afforded special attention.

## **Community Involvement**

### **Objective**

*To actively pursue the involvement of the community, through consultation, events, activities and the Friends.*

**Community Involvement** The increasing involvement of local community groups and individuals with an interest in the Park illustrates the importance of the site to local people and will be essential to the continuation of the Parks development. In addition to the numerous park users and visitors that use the Park, the main interest group are the Friends of King George V and Scotland Yard Parks. The Friends group work on numerous projects alongside the Council and are actively involved in all Park developments and consultations. They organise litter picks throughout the year, undertake weeding and planting sessions as well as assisting in the cleanup of graffiti.

Throughout the year the local Bellvue Chapel also organise green action days in the park, undertaking general maintenance tasks.

In 2011 a Youth Project funded by Action For Children saw fourteen local young people participate in the Inspiring Scotland Challenge. Over a period of seven weeks the youths completed numerous park improvements; leveling ground in preparation for the table tennis table, installing paving, painting the youth shelter, graffiti removal and weeding. (More information is available on the Friends website, <http://www.kgvsy.org.uk/>).

The Council conducts a Parks and Greenspace Survey annually. It allows the wider general public an opportunity to air their opinions to the Council on what they think about their local park and greenspace. The survey is advertised in libraries, park noticeboards and the Council website.

**Community Provision** The park is not suitable for major events due to its size and access restrictions

## **Marketing and Promotion**

### **Objective**

*To actively promote King George V and Scotland Yard Parks to all potential users*

**Marketing and Promotion** The Park is promoted through the Council website. The Friends also advertise their details in the notice boards and on their website: <http://www.kgvsy.org.uk/>. Posters advertising the annual Summer Action Programme also promote the Park and its facilities to new users. Posters are displayed in local schools, libraries and through youth clubs throughout the school summer holidays.

**Information Provision** The two notice boards located within the park display current information on local events and park developments. The Friends have an excellent website that is updated regularly. The City of Edinburgh Council has a dedicated webpage that highlights the parks facilities.

**Education and Interpretative Provision** Much work to develop two history panels within the park was undertaken and was installed in 2013.



## **Management**

### *Objective*

*To demonstrate that there is a balance between all the priorities, policies and partners and that there is a time scale for putting the objectives into practice.*

**Management Plan Implementation** The Council acknowledges the effort and support of the groups that have an interest in the Park and works closely with them, in partnership, to maintain and manage the Park for the benefit of its users, residents and visitors. This Management Plan aims to provide a clear framework for making informed and planned decisions about the future plans for the Park. The local Park Management Team aim to monitor changes in legislation, industry trends and constantly strive to provide relevant service improvements to develop the Park to meet the needs of its local community. The formation of the Management Plan will also provide a framework for the Friends group and others to monitor our performance against agreed actions.

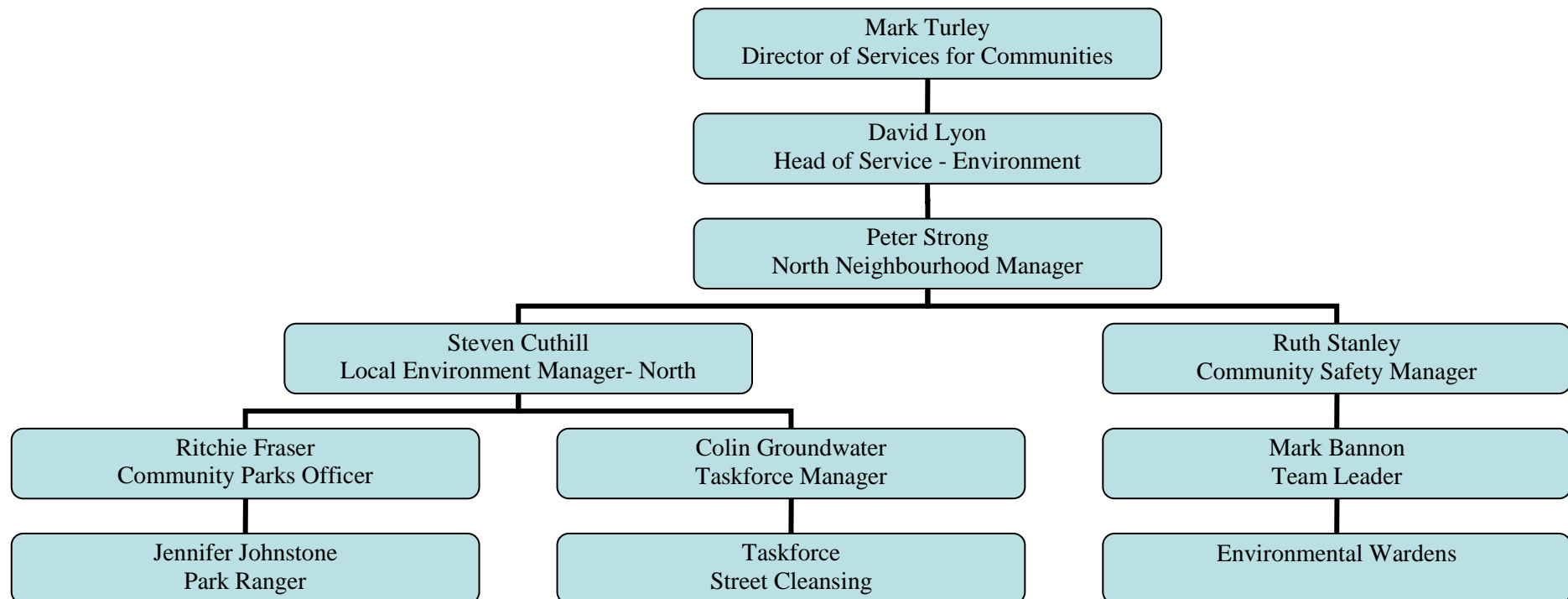
The adoption of the Green Flag Standard as a way of analysing the quality of parks and greenspace in Edinburgh and its self-assessment process (PQA) has been useful in identifying strengths and weaknesses for sites and the impact of our current management processes. The process results in a detailed plan of improvements that are in the interests of the community and the Park.

## Management Structure

Services for Communities, is structured to deliver services for the needs and priorities of local communities in each, of six, Community Planning Areas. King George V and Scotland Yard Parks lies within the North Community Planning Area, also referred to as the North Neighbourhood.

The Neighbourhood Manager has responsibility for the local delivery of essential services such as libraries, community safety, road repairs, parks, housing and street cleaning. The Local Environment Manager within the North Neighbourhood team has day to day responsibility for the management and development of Environment Services, which includes maintaining and developing parks and greenspaces, through the Community Parks Officer, Park Ranger and Open Space and Street Cleaning Task Force.

The Parks and Greenspace Service support the Local Environment Team in delivering a quality greenspace service, offering specialist advice and assistance as necessary.



## **How Will We Get There?**

This section includes the development plan, setting out the aims and objectives for King George V Park over the term of the Management Plan. This section also describes the maintenance regimes and proposed management structure to deliver the Management Plan.

### **Development Plan**

It is expected that this section is updated regularly and reviewed regularly. It may contain items that are out with the timescale of the Management Plan; this is to ensure that known future activities are recorded.

This section sets out the intended development actions and targets for the Park under each of the Green Flag Award, aims allocating a time frame, responsibility and measures. Actions will include existing projects planned for the site.

The Action Plan covers a 10 year period from 2014-2024. It will be reviewed on an annual basis to ensure future actions are added as required.

Definitions of initials:

FoKGV - Friends of King George V and Scotland Yard Parks  
CPO - Community Parks Officer  
PGS - Parks and Greenspace Service  
EW - Environmental Wardens

LEM - Local Environment Manager  
PR - Park Ranger  
TFM - Taskforce Manager

**Objective** *The overall impressions for any member of the community approaching and entering the park should be positive and inviting, regardless of the purpose for which they are visiting.*

Theme	Action	Where and/ or how	Year	Who	Cost	Status
<b>A Welcoming Place</b>	Improve way marking to and within park	Look at signage on main routes and finger posts within park to other destinations.	2015	CPO/PR	£500	
	Replace Welcome to sign about toddlers play area.	Work with Member of Friends Group to design and install	2014/ongoing	CPO/PR/ FoKGV	£150	
	Make stepped entrance at Summer Bank more welcoming and improve the feeling of safety	Introduce planting, redefine path edges.	2015	CPO	£250	

**Objective** *The park must be a healthy, safe and secure place for all members of the community to use.*

Theme	Action	Where and/ or how	Year	Who	Cost	Status
<b>Healthy, Safe and Secure</b>	Tighten control of dog fouling	Work alongside Environmental Wardens to encourage responsible dog ownership. Speak to dog owners/hand out leaflets/ patrol park.	Ongoing	PR/EW	N/A	

<b>Objective For aesthetic as well as health and safety reasons, issues of cleanliness and maintenance must be adequately addressed.</b>						
<b>Theme</b>	<b>Action</b>	<b>Where and/ or how</b>	<b>Year</b>	<b>Who</b>	<b>Cost</b>	<b>Status</b>
<b>Clean and Well Maintained</b>	Ivy removal	Investigate removal of Ivy from Rodney Street Tunnel and banking wall in North West corner of park	2015	TFM/PR	TBC	
	Improve maintenance standards	Improve maintenance standards within the resources available	2014	LEM/TFM/CPO	N/A	
	Internal Park Assessments	Continue to undertake annual internal assessments	Ongoing	CPO/PR	N/A	

<b>Objective To ensure that the methods used in maintaining the Park and its facilities are environmentally sound and are based upon best practice. To increase biodiversity of the Park.</b>						
<b>Theme</b>	<b>Action</b>	<b>Where and/ or how</b>	<b>Year</b>	<b>Who</b>	<b>Cost</b>	<b>Status</b>
<b>Sustainability</b>	Encourage biodiversity	Introduce annual wildflower meadow	2014 –annually thereafter	CPO/PR	£500	
	Encourage biodiversity	Explore idea of planting perennial plants on banking	2015 onwards	CPO/PR	TBC	
	Encourage biodiversity	Plant bed at Logan Street entrance with herbaceous	2014	CPO/PR	£2000	
	Encourage bats	Check condition of current bat boxes. Replace or increase number of existing boxes if necessary	2014 onwards	CPO/PR	TBC	
	Encourage birds to nest	Check condition of current bird boxes. Replace or increase number of existing boxes if necessary	2014 onwards	CPO/PR	TBC	

<b>Objective Particular attention should be paid to the conservation and appropriate management of natural, landscape and structural features.</b>						
<b>Theme</b>	Action	Where and/ or how	Year	Who	Cost	Status
<b>Conservation and Heritage</b>	Maintain history board	Regular patrols	Ongoing	PR	N/A	
	Update notice board	Updating conservation and biodiversity information.	Ongoing	PR	N/A	

<b>Objective To actively pursue the involvement of the community, through consultation, events, activities and the Friends of King George V Park</b>						
<b>Theme</b>	Action	Where and/ or how	Year	Who	Cost	Status
<b>Community Involvement</b>	Continue to work closely with FoKGV	Consult with FoKGV on all park developments.	Ongoing		N/A	
	Support FoKGV and volunteers	Provide tools for general maintenance, litter pick kits and organised uplift of waste.	Ongoing		N/A	
	FoKGV Newsletter	Continue to publish and circulate a newsletter to provide updates on park development, events, etc.	Ongoing		N/A	
	FoKGV develop park through external funding	Continue to apply for external funding for park projects.	Ongoing		Variable	

<b>Objective To actively promote King George V and Scotland Yard Parks to all potential users.</b>						
<b>Theme</b>	<b>Action</b>	<b>Where and/ or how</b>	<b>Year</b>	<b>Who</b>	<b>Cost</b>	<b>Status</b>
<b>Marketing and Promotion</b>	Promote park events	Ensure notice board is up to date	Weekly	PR	N/A	Ongoing
	Promote Friends and community activities.	Ensure notice board is up to date	Monthly	PR	N/A	Ongoing
	Promote Green Flag success	Ensure notice board is up to date	Annually	PR	N/A	Conditional on successful 2014 application

<b>Objective To demonstrate that there is a balance between all the priorities, policies and partners and that there is a time scale for putting the objectives into practice.</b>						
<b>Theme</b>	<b>Action</b>	<b>Where and/ or how</b>	<b>Year</b>	<b>Who</b>	<b>Cost</b>	<b>Status</b>
<b>Management</b>	Deliver Management Plan objectives	Review and update plan annually	Annually			
	Obtain and retain Green Flag Award	Green Flag Application	2014	CPO	£1000	

## **Finance**

### **Revenue funding**

The provision of revenue funding for the Park consists of work undertaken at present by the local Parks team, Task Force and Specialised Grounds Maintenance teams.

There is no specific maintenance budget allocation for King George V and Scotland Yard Parks so it is difficult to determine the exact costs associated with maintaining it. As there are no up to date rates for grounds maintenance an approximate annual cost cannot be calculated. The Community Parks Officer has a budget for small scale repairs and maintenance improvements. The annual budget for parks and open space development, including repairs and maintenance, for North Edinburgh is approximately £45,000 (2014).

### **Capital Funding**

The Capital budget is administrated by the Parks and Greenspace Service. The budget is generally allocated in advance and the role of developing Management Plans is to support better planning of the financial resources required, so that proposals can be developed and included in future bids. There was no capital allocation for the financial year 2013/2014.

### **Grants**

The Parks and Greenspace Unit have a small grants fund that Community groups can apply to for small items or to assist in developing their group or the sites they have adopted. Some projects can attract other internal/external grants that are utilised wherever possible.



## **How will we know when we have arrived?**

This section describes how the development, maintenance and management of King George V and Scotland Yard Parks will be monitored and reviewed.

### **Monitoring and Reviewing**

The Local Environment Manager, Community Parks Officer and Park Ranger, as well as grounds staff and Taskforce Managers are all involved in managing and maintaining the Park supported and assisted by local interest groups.

Regular meetings with the Friends, Community Parks Officer and Park Ranger will enable any maintenance issues to be dealt with more effectively. The Friends hold committee meetings, which the Local Environment Manager or Community Parks Officer can attend to receive feedback from the attendees relating to management issues.

Members of the public are encouraged to comment on the standards of maintenance and this is passed to all those involved with the management of the park. One method of doing this that is useful is through the ongoing Parks and Greenspace Survey, which can provide both quantitative and qualitative information on the levels of satisfaction of the management of the Park. This will also reflect how successful we are in implementing the Management Plan.

The Green Flag Award Scheme itself will provide constructive feedback from independent judges. The value of this information will help shape further improvements, both to the Management Plan and to our management processes. In addition, it is expected that we will undertake another internal Green Flag Assessment, Parks Quality Assessments, in 2014. This will also provide evidence of the development and management of King George V and Scotland Yard Parks.

## **Measures of success**

- Green Flag Award achieved in 2014 and the quality standards that are obtained in this process are constantly reviewed to check they remain at that level or above.
- The Council's internal Park Quality Assessments will continue to be used as a baseline to be improved upon annually.
- Biodiversity is considered in all park developments.
- History panels are well maintained.
- Continue to work with the Friends Group on all park developments. Ensure wider community are informed on park developments, events and activities through advisement.
- Events, activities and developments in the park are publicised well and the community are involved in ongoing communication with local residents.
- Successfully deliver the management plan year on year.

## Appendices

## Appendix 1

### Historical Maps



Robert Stevenson and Son, The City of Edinburgh: W. & A. K. Johnston, 1837



Lancefield, Alfred, 1843-1855 Johnston's plan of Edinburgh & Leith: W. & A. K. Johnston, 1851

## Historical Maps



John Bartholomew, 1831-1893, Hislop's new plan of Edinburgh & Leith with suburbs ... constructed for the Post Office Directory: Bartholomew, 1865



John Bartholomew, 1860-1920, Bartholomew's Plan of Edinburgh and Leith with Suburbs Constructed from Ordnance and Actual Surveys: Bartholomew, 1907

**Appendix 2**

**Tree Survey**

**Inverleith****King George V Eyre Place**

Tree Number	Location	Common na	Height	Spread	Trunk	Age	Condition	Site features	Condition	Comments
765	b08099	Willow specie	5 to 10 meters	6 to 9 meters	40 - 50	Mature	Fair	Footpath under canopy Group effect or touching canopies Road within falling distance	Branches infringing footpath/paveme Pruning stubs or broken branch Included Bark Dead wood - moderate	
766	b08100	Apple spp	5 to 10 meters	3 to 6 meters	20 - 30	Mature	Fair	Footpath within falling distance Group effect or touching canopies	Pruning stubs or broken branch Dead wood <30mm - minor Limbs previous failures	
767	b08101	Laburnum sp	5 to 10 meters	6 to 9 meters	50 - 60	Mature	Poor	Parking area under canopy Footpath within falling distance	Cavity - Large Dead wood - moderate Crack in major limb/crotch/trunk	
768	b08102	Willow specie	5 to 10 meters	3 to 6 meters	10 - 20	Juvenile	Poor	Footpath within falling distance Road within falling distance	Crown dieback - moderate Dead wood - moderate Stem sweep/bend	
769	b08103	Willow specie	5 to 10 meters	6 to 9 meters	30 - 40	Middle Aged	Fair	Footpath within falling distance Group effect or touching canopies	Dead wood - moderate	
770	b08104	Apple spp	Up to 5 meters	3 to 6 meters	20 - 30	Mature	Fair	Footpath within falling distance Group effect or touching canopies	Pruning stubs or broken branch Decay - Stem	
771	b08105	Purple-leaved	5 to 10 meters	3 to 6 meters	10 - 20	Middle Aged	Fair	Footpath within falling distance Group effect or touching canopies	Pruning stubs or broken branch Included Bark	

## Inverleith ...(contd)..

## King George V Eyre Place ...(contd)..

Tree Number	Location	Common na	Height	Spread	Trunk	Age	Condition	Site features	Condition	Comments
772	b08108	Apple spp	5 to 10 meters	3 to 6 meters	20 - 30	Mature	Fair	Parking area under canopy Footpath under canopy	Pruning stubs or broken branch	
773	b08106	Norway Mapl	5 to 10 meters	6 to 9 meters	30 - 40	Middle Aged	Fair	Footpath under canopy Group effect or touching canopies	Included Bark Limbs previous failures Rootsdamaged/exp osed/restricted	
774	b08107	Birch spp	5 to 10 meters	6 to 9 meters	20 - 30	Middle Aged	Fair	Footpath under canopy Group effect or touching canopies	Stem sweep/bend	
775	b08109	Horse Chestn	5 to 10 meters	6 to 9 meters	10 - 20	Semi-mature	Fair	Parking area under canopy Footpath under canopy	Codominant stems Suppressed	
776	b08110	Norway Mapl	5 to 10 meters	9 to 12 meters	30 - 40	Middle Aged	Fair	Parking area under canopy Footpath under canopy	Branches infringing highways cleara Included Bark	
777	b08111	Apple spp	Up to 5 meters	6 to 9 meters	20 - 30	Middle Aged	Fair	Parking area under canopy Footpath under canopy	Pruning stubs or broken branch Dead wood - moderate	
778	b08112	Norway Mapl	10 to 15 meters	9 to 12 meters	30 - 40	Mature	Poor	Parking area under canopy Footpath under canopy	Included Bark Limbs previous failures	
779	b08113	Apple spp	Up to 5 meters	3 to 6 meters	20 - 30	Mature	Fair	Parking area under canopy Footpath under canopy	Pruning stubs or broken branch Dead wood - moderate Suppressed	



## Inverleith ...(contd)..

## King George V Eyre Place ...(contd)..

Tree Number	Location	Common na	Height	Spread	Trunk	Age	Condition	Site features	Condition	Comments
780	b08114	Apple spp	5 to 10 meters	6 to 9 meters	30 - 40	Mature	Fair	Parking area under canopy Footpath under canopy	Pruning stubs or broken branch Dead wood - moderate	
781	b08115	Thorn species	5 to 10 meters	3 to 6 meters	20 - 30	Mature	Fair	Parking area under canopy Footpath under canopy Street lamp	Pruning stubs or broken branch Ivy covered stem Dead wood - moderate	Iv due to ivy
782	b08116	Thorn species	Up to 5 meters	6 to 9 meters	20 - 30	Mature	Fair	Bus stop/shelter under canopy Footpath under canopy	Pruning stubs or broken branch Dead wood - moderate	
783	b08117	Alder spp	Up to 5 meters	Up to 3 meters	10 - 20	Juvenile	Fair	Footpath under canopy Group effect or touching canopies	None recorded..	
784	b08118	Birch spp	Up to 5 meters	3 to 6 meters	10 - 20	Semi-mature	Fair	Footpath under canopy Group effect or touching canopies	None recorded..	
785	b08119	Horse Chestn	Up to 5 meters	3 to 6 meters	10 - 20	Semi-mature	Fair	Footpath under canopy Group effect or touching canopies	Pruning stubs or broken branch Included Bark	
786	b08120	Alder spp	5 to 10 meters	3 to 6 meters	10 - 20	Semi-mature	Fair	Footpath under canopy Group effect or touching canopies	None recorded..	
787	b08121	Apple spp	5 to 10 meters	6 to 9 meters	30 - 40	Mature	Fair	Footpath under canopy Group effect or touching canopies	Crown dieback - minor Dead wood <30mm - minor	
788	b08122	Horse Chestn	5 to 10 meters	3 to 6 meters	10 - 20	Semi-mature	Fair	Footpath under canopy Group effect or touching canopies	None recorded..	

## Inverleith ...(contd)..

## King George V Eyre Place ...(contd)..

Tree Number	Location	Common na	Height	Spread	Trunk	Age	Condition	Site features	Condition	Comments
789	b08123	Horse Chestn	5 to 10 meters	3 to 6 meters	10 - 20	Semi-mature	Fair	Footpath under canopy Group effect or touching canopies	None recorded..	
790	b08124	Norway Mapl	5 to 10 meters	3 to 6 meters	20 - 30	Semi-mature	Fair	Footpath under canopy Group effect or touching canopies	Scale insect	
791	b08125	Elm spp	10 to 15 meters	6 to 9 meters	20 - 30	Semi-mature	Fair	Parking area under canopy Footpath under canopy Road within canopy	Branches infringing highways cleara Scale insect Suppressed	
792	b08126	Elm spp	10 to 15 meters	6 to 9 meters	40 - 50	Middle Aged	Fair	Parking area under canopy Footpath under canopy Road within canopy	Branches infringing highways cleara Dead wood - moderate Scale insect	
793	b08127	Elm spp	10 to 15 meters	6 to 9 meters	40 - 50	Middle Aged	Fair	Parking area under canopy Footpath under canopy Road within canopy	Lower canopy Dead wood - moderate Limbs previous failures Scale insect	
794	b08129	Apple spp	Up to 5 meters	3 to 6 meters	10 - 20	Middle Aged	Fair	Footpath under canopy Group effect or touching canopies	Ivy covered stem Dead wood <30mm - minor	
795	b08128	Laburnum sp	5 to 10 meters	3 to 6 meters	40 - 50	Mature	Poor	Parking area under canopy Footpath under canopy	Cavity - Small Crown dieback - minor Dead wood - moderate Decay - Stem	
796	b08130	Apple spp	Up to 5 meters	3 to 6 meters	20 - 30	Middle Aged	Fair	Footpath within falling distance Group effect or touching canopies	Ivy covered stem Dead wood <30mm - minor	

## Inverleith ...(contd)..

## King George V Eyre Place ...(contd)..

Tree Number	Location	Common na	Height	Spread	Trunk	Age	Condition	Site features	Condition	Comments
797	b08131	Norway Mapl	10 to 15 meters	6 to 9 meters	20 - 30	Middle Aged	Fair	Footpath within falling distance Group effect or touching canopies	Codominant stems Dead wood <30mm - minor	
798	b08132	Norway Mapl	10 to 15 meters	6 to 9 meters	20 - 30	Middle Aged	Fair	Footpath under canopy Group effect or touching canopies	Included Bark Scale insect	
1062	b08134	Lime spp	5 to 10 meters	6 to 9 meters	40 - 50	Middle Aged	Fair	Footpath under canopy Group effect or touching canopies Property within falling distance	Hanging broken branch Dead wood - moderate Limbs previous failures	
1063	b08133	Lime spp	5 to 10 meters	6 to 9 meters	40 - 50	Middle Aged	Fair	Footpath under canopy Group effect or touching canopies	Epicormic growth - major Cavities in main branch structure Hanging broken branch Dead wood - moderate	
1064	b08135	Birch spp	5 to 10 meters	6 to 9 meters	40 - 50	Middle Aged	Fair	Footpath under canopy Group effect or touching canopies Property within falling distance	Crown dieback - minor Dead wood - moderate	
1066	b08137	Lime spp	5 to 10 meters	9 to 12 meters	40 - 50	Middle Aged	Fair	Group effect or touching canopies Property within falling distance	Narrow forks with included bark Limbs previous failures	
1067	b08140	Cherry spp	Up to 5 meters	3 to 6 meters	10 - 20	Semi-mature	Fair	Footpath under canopy Group effect or touching canopies	Dead wood - moderate	

## Inverleith ...(contd)..

## King George V Eyre Place ...(contd)..

Tree Number	Location	Common na	Height	Spread	Trunk	Age	Condition	Site features	Condition	Comments
1068	b08139	Cherry spp	5 to 10 meters	3 to 6 meters	10 - 20	Semi-mature	Fair	Footpath within falling distance Group effect or touching canopies	Codominant stems	
1069	b08138	Portugal Laur	Up to 5 meters	Up to 3 meters	10 - 20	Middle Aged	Fair	Group effect or touching canopies Ground plants	None recorded..	
1070	b08141	Birch spp	5 to 10 meters	6 to 9 meters	20 - 30	Middle Aged	Good	Footpath under canopy Group effect or touching canopies	None recorded..	
1071	b08156	Purple-leaved	5 to 10 meters	3 to 6 meters	20 - 30	Mature	Fair	Ground plants Property within falling distance	Ivy covered stem & crown	Iv due to ivy
1072	b08142	Cherry spp	5 to 10 meters	6 to 9 meters	30 - 40	Mature	Fair	Footpath under canopy Group effect or touching canopies	Pruning stubs or broken branch Dead wood <30mm - minor Decay - Stem	sunken necrotic bark at base
1073	b08143	Lime spp	10 to 15 meters	6 to 9 meters	30 - 40	Middle Aged	Fair	Footpath under canopy Group effect or touching canopies	Pruning stubs or broken branch Narrow forks with included bark	
1074	b08144	Laburnum sp	5 to 10 meters	6 to 9 meters	30 - 40	Middle Aged	Poor	Group effect or touching canopies Property within falling distance	Cavity - Small Crown dieback - moderate Dead wood - moderate Multi-stemmed	
1075	b08145	Willow specie	Up to 5 meters	Up to 3 meters	10 - 20	Semi-mature	Poor	Footpath under canopy Property within falling distance	Codominant stems Suppressed	
1076	b08146	Thorn species	Up to 5 meters	3 to 6 meters	20 - 30	Mature	Fair	Ground plants Property within falling distance	Ivy covered stem & crown Limbs previous failures	

## Inverleith ...(contd)..

## King George V Eyre Place ...(contd)..

Tree Number	Location	Common na	Height	Spread	Trunk	Age	Condition	Site features	Condition	Comments
1077	b08147	Lime spp	10 to 15 meters	9 to 12 meters	30 - 40	Middle Aged	Good	Ground plants Property within falling distance	Pruning stubs or broken branch Dead wood <30mm - minor	
1078	b08148	Lime spp	10 to 15 meters	6 to 9 meters	20 - 30	Semi-mature	Good	Footpath under canopy Ground plants	Pruning stubs or broken branch	
1079	b08149	Common Ash	10 to 15 meters	6 to 9 meters	20 - 30	Semi-mature	Fair	Footpath under canopy Ground plants	Pruning stubs or broken branch Dead wood <30mm - minor Stem sweep/bend	
1080	b08150	Cherry spp	10 to 15 meters	3 to 6 meters	20 - 30	Middle Aged	Fair	Footpath within falling distance Ground plants Property within falling distance	Dead wood <30mm - minor	
1081	b08152	Apple spp	Up to 5 meters	3 to 6 meters	20 - 30	Mature	Fair	Ground plants Property within falling distance	Pruning stubs or broken branch	
1082	b08151	Lime spp	10 to 15 meters	3 to 6 meters	20 - 30	Semi-mature	Fair	Footpath under canopy Ground plants Property within falling distance	None recorded..	
1083	b08153	Lime spp	10 to 15 meters	3 to 6 meters	20 - 30	Semi-mature	Fair	Footpath under canopy Ground plants Property within falling distance	Included Bark	
1084	b08154	Cherry spp	5 to 10 meters	6 to 9 meters	30 - 40	Middle Aged	Fair	Footpath under canopy Ground plants Property within falling distance	Pruning stubs or broken branch Dead wood <30mm - minor	

## Inverleith ...(contd)..

## King George V Eyre Place ...(contd)..

Tree Number	Location	Common na	Height	Spread	Trunk	Age	Condition	Site features	Condition	Comments
1085	b08155	Lime spp	5 to 10 meters	6 to 9 meters	30 - 40	Middle Aged	Fair	Footpath under canopy Ground plants Property within falling distance	Narrow forks with included bark Limbs previous failures	
1086	b08157	Cherry spp	5 to 10 meters	6 to 9 meters	20 - 30	Mature	Poor	Ground plants Property within falling distance	None recorded..	tree resting on property
1087	b08158	Apple spp	5 to 10 meters	3 to 6 meters	20 - 30	Mature	Fair	Ground plants Property within falling distance	Moderate bark/trunk wound Dead wood <30mm - minor	
1088	b08159	Thorn species	Up to 5 meters	3 to 6 meters	20 - 30	Mature	Fair	Ground plants Property within falling distance	Pruning stubs or broken branch Hanging broken branch Dead wood - moderate Limbs previous failures	
1089	b08161	Common Ash	5 to 10 meters	3 to 6 meters	20 - 30	Semi-mature	Fair	Ground plants Property within falling distance	Dead wood <30mm - minor	
1090	b08160	Lime spp	5 to 10 meters	6 to 9 meters	30 - 40	Middle Aged	Fair	Footpath under canopy Ground plants Property within falling distance	Narrow forks with included bark Stem sweep/bend	
1091	b08162	Lime spp	5 to 10 meters	6 to 9 meters	20 - 30	Semi-mature	Fair	Ground plants Property within falling distance	Dead wood <30mm - minor	
1092	b08163	Lime spp	5 to 10 meters	6 to 9 meters	20 - 30	Semi-mature	Fair	Ground plants Property within falling distance	Dead wood <30mm - minor	
1093	b08164	Lime spp	Up to 5 meters	3 to 6 meters	10 - 20	Juvenile	Fair	Ground plants Property within falling distance	Multi-stemmed	

## Inverleith ...(contd)..

## King George V Eyre Place ...(contd)..

Tree Number	Location	Common na	Height	Spread	Trunk	Age	Condition	Site features	Condition	Comments
1094	b08165	Common Ash	Up to 5 meters	3 to 6 meters	10 - 20	Juvenile	Fair	Ground plants Property within falling distance	Moderate bark/trunk wound	
1095	b08166	Cherry spp	10 to 15 meters	6 to 9 meters	40 - 50	Mature	Fair	Footpath within falling distance Ground plants Property within falling distance	Dead wood - moderate Rootsdamaged/exp osed/restricted	
1096	b08167	Lime spp	5 to 10 meters	3 to 6 meters	20 - 30	Semi-mature	Poor	Footpath under canopy Ground plants	Lean - severe Narrow forks with included bark Stem sweep/bend	
1097	b08168	Cherry spp	5 to 10 meters	3 to 6 meters	20 - 30	Middle Aged	Poor	Footpath under canopy Ground plants	Codominant stems Fungal fruiting bodies Included Bark	ganoderma spp. fruiting bodies at base
1098	b08169	Lime spp	10 to 15 meters	9 to 12 meters	40 - 50	Mature	Fair	Footpath under canopy Ground plants Property within falling distance	Hanging broken branch Dead wood - moderate Narrow forks with included bark Crack in major limb/crotch/trunk	branches touching building
1099	b08170	Cherry spp	5 to 10 meters	3 to 6 meters	20 - 30	Middle Aged	Poor	Footpath under canopy Ground plants	Moderate bark/trunk wound Decay - Stem	
1100	b08171	Cherry spp	5 to 10 meters	6 to 9 meters	30 - 40	Mature	Fair	Footpath under canopy Ground plants Property within falling distance	Dead wood - moderate	branches touching building
1101	b08172	Cherry spp	5 to 10 meters	3 to 6 meters	20 - 30	Middle Aged	Fair	Footpath under canopy Ground plants	None recorded..	

## Inverleith ...(contd)..

## King George V Eyre Place ...(contd)..

Tree Number	Location	Common na	Height	Spread	Trunk	Age	Condition	Site features	Condition	Comments
1102	b08173	Cherry spp	5 to 10 meters	3 to 6 meters	10 - 20	Middle Aged	Poor	Footpath under canopy Ground plants	Crown dieback - moderate Included Bark Dead wood <30mm - minor Trunk or branch cankers	
1103	b08174	Purple-leaved	5 to 10 meters	6 to 9 meters	30 - 40	Mature	Fair	Ground plants Property within falling distance	Included Bark Dead wood <30mm - minor	branches touching building
1104	b08175	Norway Mapl	5 to 10 meters	6 to 9 meters	20 - 30	Middle Aged	Fair	Footpath under canopy Ground plants Property within falling distance	Included Bark	
1105	b08176	Birch spp	10 to 15 meters	3 to 6 meters	20 - 30	Middle Aged	Fair	Footpath under canopy Ground plants Property within falling distance	Stem sweep/bend	
1106	b08177	Lime spp	10 to 15 meters	3 to 6 meters	20 - 30	Semi-mature	Fair	Footpath under canopy Ground plants Property within falling distance	Stem sweep/bend	
1107	b08178	Cherry spp	5 to 10 meters	3 to 6 meters	20 - 30	Middle Aged	Fair	Footpath under canopy Ground plants Property within falling distance	Epicormic growth - minor Crown dieback - minor	branches touching building
1108	b08179	Birch spp	5 to 10 meters	3 to 6 meters	20 - 30	Middle Aged	Fair	Footpath under canopy Ground plants Property within falling distance	None recorded..	



## Inverleith ...(contd)..

## King George V Eyre Place ...(contd)..

Tree Number	Location	Common na	Height	Spread	Trunk	Age	Condition	Site features	Condition	Comments
1109	b08180	Lime spp	10 to 15 meters	3 to 6 meters	20 - 30	Semi-mature	Fair	Footpath under canopy Ground plants Property within falling distance	Included Bark	
1110	b08181	Lime spp	10 to 15 meters	3 to 6 meters	20 - 30	Semi-mature	Fair	Footpath under canopy Ground plants Property within falling distance	Included Bark	branches touching building
1111	b08182	Birch spp	5 to 10 meters	Up to 3 meters	10 - 20	Semi-mature	Fair	Footpath within falling distance Ground plants Property within falling distance	Moderate bark/trunk wound Decay - Stem	
1112	b08183	Norway Mapl	5 to 10 meters	6 to 9 meters	20 - 30	Semi-mature	Fair	Footpath within falling distance Ground plants Property within falling distance	Moderate bark/trunk wound Dead wood <30mm - minor	branches touching building
1113	b08184	Cherry spp	5 to 10 meters	3 to 6 meters	20 - 30	Middle Aged	Fair	Footpath within falling distance Ground plants Property within falling distance	Ivy covered stem Trunk or branch cankers	lv due to ivy
1114	b08185	Cherry spp	5 to 10 meters	3 to 6 meters	20 - 30	Middle Aged	Fair	Footpath within falling distance Ground plants Property within falling distance	Ivy covered stem Trunk or branch cankers	lv due to ivy
1115	b08186	Cherry spp	5 to 10 meters	3 to 6 meters	20 - 30	Middle Aged	Fair	Ground plants Property within falling distance	Trunk or branch cankers	branches touching building
1116	b08187	Cherry spp	5 to 10 meters	3 to 6 meters	30 - 40	Middle Aged	Fair	Ground plants Property within falling distance	Pruning stubs or broken branch Crown dieback - minor Dead wood - moderate	branches touching building

## Inverleith ...(contd)..

## King George V Eyre Place ...(contd)..

Tree Number	Location	Common na	Height	Spread	Trunk	Age	Condition	Site features	Condition	Comments
1117	b08188	Cherry spp	5 to 10 meters	Up to 3 meters	10 - 20	Semi-mature	Fair	Ground plants Property within falling distance	None recorded..	branches touching building
1118	b08189	Cherry spp	5 to 10 meters	6 to 9 meters	20 - 30	Middle Aged	Fair	Footpath under canopy Ground plants Property within falling distance	Codominant stems Ivy covered stem	lv due to ivy
1119	b08190	Cherry spp	5 to 10 meters	Up to 3 meters	10 - 20	Semi-mature	Fair	Footpath under canopy Ground plants	Suppressed	lv due to ivy
1120	b08191	Cherry spp	5 to 10 meters	3 to 6 meters	10 - 20	Semi-mature	Fair	Footpath under canopy Ground plants	Included Bark	lv due to ivy
1121	b08194	Common Ash	Up to 5 meters	Up to 3 meters	10 - 20	Juvenile	Fair	Group effect or touching canopies Ground plants Property within falling distance	None recorded..	
1122	b08195	Common Ash	Up to 5 meters	Up to 3 meters	10 - 20	Juvenile	Fair	Group effect or touching canopies Ground plants Property within falling distance	None recorded..	
1123	b08193	Willow specie	5 to 10 meters	3 to 6 meters	20 - 30	Semi-mature	Fair	Footpath under canopy Ground plants	Codominant stems Stem sweep/bend	
1124	b08192	Willow specie	5 to 10 meters	6 to 9 meters	10 - 20	Semi-mature	Fair	Footpath under canopy Ground plants	Included Bark Multi-stemmed	
1125	b08196	Common Ash	5 to 10 meters	3 to 6 meters	10 - 20	Semi-mature	Fair	Group effect or touching canopies Ground plants Property within falling distance	None recorded..	

## Inverleith ...(contd)..

## King George V Eyre Place ...(contd)..

Tree Number	Location	Common na	Height	Spread	Trunk	Age	Condition	Site features	Condition	Comments
1126	b08197	Common Ash	5 to 10 meters	3 to 6 meters	10 - 20	Semi-mature	Fair	Group effect or touching canopies Ground plants Property within falling distance	None recorded..	
1127	b08198	Sycamore	5 to 10 meters	3 to 6 meters	20 - 30	Semi-mature	Poor	Footpath within falling distance Group effect or touching canopies Property within falling distance	Codominant stems Included Bark	
1128	b08199	Sycamore	5 to 10 meters	3 to 6 meters	20 - 30	Semi-mature	Fair	Footpath within falling distance Group effect or touching canopies Property within falling distance	None recorded..	branches touching building
1129	b08200	Common Elder	Up to 5 meters	3 to 6 meters	10 - 20	Middle Aged	Fair	Footpath within falling distance Ground plants	Multi-stemmed	
1130	b08201	Common Ash	5 to 10 meters	6 to 9 meters	10 - 20	Semi-mature	Poor	Ground plants Property within falling distance	Moderate bark/trunk wound Stem sweep/bend	branches touching building
1131	b08202	Common Ash	5 to 10 meters	6 to 9 meters	10 - 20	Semi-mature	Fair	Ground plants Property within falling distance	Dead wood <30mm - minor Trunk defect/wound	
1132	b08203	Sycamore	10 to 15 meters	6 to 9 meters	30 - 40	Semi-mature	Fair	Footpath within falling distance Ground plants Property within falling distance	Included Bark Dead wood <30mm - minor Scale insect	
1133	b08204	Apple spp	Up to 5 meters	3 to 6 meters	20 - 30	Mature	Fair	Ground plants Property within falling distance	Ivy covered stem & crown Dead wood - moderate	

## Inverleith ...(contd)..

## King George V Eyre Place ...(contd)..

Tree Number	Location	Common na	Height	Spread	Trunk	Age	Condition	Site features	Condition	Comments
1134	b08205	Birch spp	5 to 10 meters	6 to 9 meters	40 - 50	Mature	Fair	Ground plants Property within falling distance	Moderate bark/trunk wound Dead wood - moderate	
1135	b08206	Goat Willow	Up to 5 meters	6 to 9 meters	10 - 20	Middle Aged	Fair	Footpath within falling distance Ground plants	Ivy covered stem Multi-stemmed	
1136	b08207	Birch spp	5 to 10 meters	3 to 6 meters	10 - 20	Semi-mature	Fair	Footpath within falling distance Ground plants	Ivy covered stem	Iv due to ivy
1137	b08208	Birch spp	5 to 10 meters	3 to 6 meters	10 - 20	Semi-mature	Fair	Footpath within falling distance Ground plants	Ivy covered stem	Iv due to ivy
1138	b08209	Birch spp	5 to 10 meters	3 to 6 meters	10 - 20	Semi-mature	Fair	Footpath within falling distance Ground plants	Ivy covered stem	Iv due to ivy
1139	b08210	Birch spp	5 to 10 meters	6 to 9 meters	20 - 30	Middle Aged	Fair	Footpath within falling distance Ground plants	Ivy covered stem	Iv due to ivy
1140	b08211	Lime spp	5 to 10 meters	3 to 6 meters	10 - 20	Semi-mature	Fair	Ground plants Property within falling distance	Limbs previous failures	
1141	b08212	Goat Willow	5 to 10 meters	3 to 6 meters	10 - 20	Semi-mature	Fair	Footpath within falling distance Ground plants Property within falling distance	Moderate bark/trunk wound Multi-stemmed	
1142	b08213	Goat Willow	5 to 10 meters	3 to 6 meters	10 - 20	Semi-mature	Fair	Footpath within falling distance Ground plants Property within falling distance	Ivy covered stem Multi-stemmed	Iv due to ivy

## Inverleith ...(contd)..

## King George V Eyre Place ...(contd)..

Tree Number	Location	Common na	Height	Spread	Trunk	Age	Condition	Site features	Condition	Comments
1143	b08214	Goat Willow	5 to 10 meters	3 to 6 meters	10 - 20	Semi-mature	Fair	Footpath within falling distance Ground plants Property within falling distance	Codominant stems Dead wood <30mm - minor	branches touching building
1144	b08215	Goat Willow	5 to 10 meters	Up to 3 meters	10 - 20	Semi-mature	Poor	Footpath within falling distance Ground plants	Codominant stems Dead wood <30mm - minor	branches touching building
1145	b08216	Cherry spp	Up to 5 meters	3 to 6 meters	10 - 20	Semi-mature	Poor	Footpath within falling distance Ground plants	Crown dieback - moderate Dead wood - moderate Stem sweep/bend	
1146	b08217	Cherry spp	5 to 10 meters	Up to 3 meters	10 - 20	Semi-mature	Fair	Footpath within falling distance Ground plants Property within falling distance	None recorded..	
1147	b08218	Cherry spp	5 to 10 meters	6 to 9 meters	20 - 30	Middle Aged	Fair	Footpath within falling distance Property within falling distance Street lamp	Included Bark	
1148	b08219	Birch spp	5 to 10 meters	6 to 9 meters	20 - 30	Middle Aged	Fair	Footpath within falling distance Property within falling distance	None recorded..	
1149	b08220	Sycamore	5 to 10 meters	6 to 9 meters	20 - 30	Semi-mature	Fair	Footpath within falling distance Property within falling distance	Included Bark Multi-stemmed	tree is half in park & half in neighbouring property = lv
1150	b08233	Norway Mapk	10 to 15 meters	3 to 6 meters	20 - 30	Semi-mature	Fair	Footpath within falling distance Group effect or touching canopies Property within falling distance	Ivy covered stem & crown	lv due to ivy

## Inverleith ...(contd)..

## King George V Eyre Place ...(contd)..

Tree Number	Location	Common na	Height	Spread	Trunk	Age	Condition	Site features	Condition	Comments
1151	b08221	Sycamore	10 to 15 meters	6 to 9 meters	30 - 40	Middle Aged	Fair	Footpath within falling distance Property within falling distance Street lamp	Moderate bark/trunk wound Codominant stems Included Bark Dead wood - moderate Scale insect	
1152	b08222	Sycamore	10 to 15 meters	3 to 6 meters	10 - 20	Semi-mature	Fair	Footpath under canopy Group effect or touching canopies	Dead wood - moderate	
1153	b08223	Sycamore	10 to 15 meters	3 to 6 meters	10 - 20	Semi-mature	Fair	Footpath under canopy Group effect or touching canopies	Dead wood - moderate Scale insect	
1154	b08224	Sycamore	10 to 15 meters	3 to 6 meters	20 - 30	Semi-mature	Good	Footpath under canopy Group effect or touching canopies	Dead wood <30mm - minor	
1155	b08225	Norway Mapl	5 to 10 meters	3 to 6 meters	10 - 20	Semi-mature	Fair	Footpath under canopy Group effect or touching canopies	Limbs previous failures	
1156	b08226	Norway Mapl	5 to 10 meters	3 to 6 meters	10 - 20	Semi-mature	Fair	Footpath within falling distance Group effect or touching canopies Property within falling distance	Dead wood - moderate	
1157	b08227	Norway Mapl	10 to 15 meters	6 to 9 meters	20 - 30	Semi-mature	Fair	Footpath within falling distance Group effect or touching canopies Property within falling distance	Dead wood - moderate	

## Inverleith ...(contd)..

## King George V Eyre Place ...(contd)..

Tree Number	Location	Common na	Height	Spread	Trunk	Age	Condition	Site features	Condition	Comments
1158	b08228	Norway Mapl	10 to 15 meters	6 to 9 meters	10 - 20	Semi-mature	Fair	Footpath within falling distance Group effect or touching canopies Property within falling distance	Dead wood - moderate	
1159	b08229	Norway Mapl	10 to 15 meters	6 to 9 meters	10 - 20	Semi-mature	Fair	Footpath within falling distance Group effect or touching canopies Property within falling distance	Dead wood - moderate	
1160	b08230	Common Ash	10 to 15 meters	3 to 6 meters	10 - 20	Semi-mature	Fair	Footpath within falling distance Group effect or touching canopies Property within falling distance	None recorded..	
1161	b08231	Sycamore	10 to 15 meters	3 to 6 meters	10 - 20	Semi-mature	Fair	Footpath within falling distance Group effect or touching canopies Property within falling distance	Dead wood <30mm - minor	
1162	b08232	Sycamore	10 to 15 meters	6 to 9 meters	10 - 20	Middle Aged	Fair	Footpath within falling distance Group effect or touching canopies Property within falling distance	Dead wood - moderate	
1163	b08234	Norway Mapl	5 to 10 meters	3 to 6 meters	10 - 20	Semi-mature	Fair	Footpath within falling distance Group effect or touching canopies	Dead wood <30mm - minor	
1164	b08235	Common Ash	10 to 15 meters	3 to 6 meters	10 - 20	Semi-mature	Fair	Footpath within falling distance Group effect or touching canopies	Ivy covered stem	Iv due to ivy

## Inverleith ...(contd)..

## King George V Eyre Place ...(contd)..

Tree Number	Location	Common na	Height	Spread	Trunk	Age	Condition	Site features	Condition	Comments
1165	b08236	Sycamore	10 to 15 meters	3 to 6 meters	10 - 20	Semi-mature	Fair	Group effect or touching canopies Ground plants	Ivy covered stem	Iv due to ivy
1166	b08237	Sycamore	5 to 10 meters	3 to 6 meters	10 - 20	Semi-mature	Fair	Group effect or touching canopies Ground plants	Ivy covered stem	
1167	b08238	Sycamore	5 to 10 meters	3 to 6 meters	10 - 20	Semi-mature	Fair	Group effect or touching canopies Ground plants	Stem sweep/bend	
1168	b08239	Sycamore	5 to 10 meters	3 to 6 meters	10 - 20	Semi-mature	Fair	Footpath within falling distance Group effect or touching canopies	None recorded..	
1169	b08240	Sycamore	5 to 10 meters	3 to 6 meters	10 - 20	Semi-mature	Fair	Footpath within falling distance Group effect or touching canopies	None recorded..	
1170	b08241	Elm spp	Up to 5 meters	3 to 6 meters	10 - 20	Semi-mature	Fair	Footpath under canopy Group effect or touching canopies	Pruning stubs or broken branch Scale insect Stem sweep/bend	
1171	b08242	Norway Maple	5 to 10 meters	3 to 6 meters	10 - 20	Semi-mature	Fair	Footpath under canopy Group effect or touching canopies	Lean - moderate Dead wood <30mm - minor	
1192	b08263	Horse Chestn	5 to 10 meters	6 to 9 meters	20 - 30	Semi-mature	Good	Footpath under canopy Road within canopy	Codominant stems	
1193	b08266	Cherry spp	5 to 10 meters	3 to 6 meters	10 - 20	Semi-mature	Fair	Footpath under canopy Group effect or touching canopies	Suppressed	
1194	b08264	Cherry spp	5 to 10 meters	3 to 6 meters	10 - 20	Semi-mature	Fair	Footpath under canopy Group effect or touching canopies	Suppressed	



## Inverleith ...(contd)..

## King George V Eyre Place ...(contd)..

Tree Number	Location	Common na	Height	Spread	Trunk	Age	Condition	Site features	Condition	Comments
1195	b08265	Horse Chestn	5 to 10 meters	3 to 6 meters	10 - 20	Semi-mature	Fair	Footpath under canopy Road within canopy	Branches infringing highways cleara Codominant stems Included Bark Suppressed	
1196	b08267	Cherry spp	5 to 10 meters	6 to 9 meters	10 - 20	Semi-mature	Fair	Footpath under canopy Group effect or touching canopies Road within falling distance	Pruning stubs or broken branch	
1197	b08268	Sycamore	5 to 10 meters	3 to 6 meters	20 - 30	Semi-mature	Fair	Footpath under canopy Road within falling distance Street lamp	Dead wood <30mm - minor Scale insect	
1198	b08269	Sycamore	5 to 10 meters	3 to 6 meters	30 - 40	Semi-mature	Fair	Footpath under canopy Road within canopy	Codominant stems Included Bark Dead wood <30mm - minor Scale insect	
1199	b08270	Sycamore	5 to 10 meters	3 to 6 meters	30 - 40	Semi-mature	Fair	Footpath under canopy Road within canopy	Dead wood <30mm - minor Scale insect	
1200	b08271	Sycamore	5 to 10 meters	3 to 6 meters	30 - 40	Semi-mature	Fair	Footpath under canopy Road within canopy	Branches infringing highways cleara Dead wood <30mm - minor Limbs previous failures Scale insect	
1201	b08273	Sycamore	5 to 10 meters	6 to 9 meters	20 - 30	Semi-mature	Fair	Footpath under canopy Road within canopy	Limbs previous failures Scale insect	
1202	b08272	Sycamore	5 to 10 meters	3 to 6 meters	20 - 30	Semi-mature	Fair	Footpath under canopy Road within falling distance	Limbs previous failures Scale insect	

## Inverleith ...(contd)..

## King George V Eyre Place ...(contd)..

Tree Number	Location	Common na	Height	Spread	Trunk	Age	Condition	Site features	Condition	Comments
1203	b08274	Norway Mapl	5 to 10 meters	6 to 9 meters	20 - 30	Semi-mature	Fair	Footpath under canopy Group effect or touching canopies	Limbs previous failures Scale insect	
1204	b08275	Willow specie	10 to 15 meters	9 to 12 meters	40 - 50	Mature	Fair	Footpath under canopy Group effect or touching canopies	Codominant stems Hanging broken branch Included Bark Dead wood - moderate Limbs previous failures	
1205	b08276	Sycamore	5 to 10 meters	3 to 6 meters	10 - 20	Juvenile	Fair	Footpath under canopy Group effect or touching canopies	Scale insect Suppressed	
1206	b08277	Willow specie	10 to 15 meters	9 to 12 meters	30 - 40	Mature	Fair	Footpath under canopy Group effect or touching canopies	Codominant stems Hanging broken branch Dead wood - moderate Limbs previous failures	
1207	b08278	Common Ash	5 to 10 meters	6 to 9 meters	30 - 40	Middle Aged	Fair	Footpath under canopy Group effect or touching canopies	Hanging broken branch Dead wood - moderate Limbs previous failures	
1208	b08279	Common Ash	5 to 10 meters	9 to 12 meters	50 - 60	Middle Aged	Fair	Footpath under canopy Public access: high	Moderate bark/trunk wound Hanging broken branch Dead wood - moderate Limbs previous failures	
1209	b08280	Cherry spp	5 to 10 meters	6 to 9 meters	20 - 30	Mature	Fair	Footpath under canopy Public access: high	Codominant stems	

## Inverleith ...(contd)..

## King George V Eyre Place ...(contd)..

Tree Number	Location	Common na	Height	Spread	Trunk	Age	Condition	Site features	Condition	Comments
1210	b08281	Lime spp	5 to 10 meters	6 to 9 meters	20 - 30	Semi-mature	Fair	Footpath under canopy Public access: high	Narrow forks with included bark Limbs previous failures	
1211	b08282	Cherry spp	5 to 10 meters	6 to 9 meters	20 - 30	Middle Aged	Fair	Footpath under canopy Public access: high	None recorded..	
1212	b08283	Elm spp	5 to 10 meters	3 to 6 meters	10 - 20	Semi-mature	Fair	Group effect or touching canopies Public access: high	None recorded..	
1213	b08284	Common Ash	5 to 10 meters	9 to 12 meters	30 - 40	Middle Aged	Fair	Group effect or touching canopies Public access: high	Hanging broken branch Dead wood - moderate	
1214	b08285	Sycamore	5 to 10 meters	3 to 6 meters	10 - 20	Semi-mature	Fair	Group effect or touching canopies Public access: high	None recorded..	
1215	b08286	Sycamore	5 to 10 meters	3 to 6 meters	10 - 20	Semi-mature	Fair	Footpath under canopy Group effect or touching canopies Public access: high	None recorded..	
1217	b08290	Goat Willow	5 to 10 meters	6 to 9 meters	20 - 30	Middle Aged	Fair	Footpath under canopy Group effect or touching canopies Public access: high	Included Bark Dead wood <30mm - minor	
1218	b08291	Norway Maplk	Up to 5 meters	3 to 6 meters	20 - 30	Semi-mature	Fair	Footpath under canopy Public access: high	Dead wood <30mm - minor Minor bark/trunk wound	within playpark.
1219	b08292	Cherry spp	Up to 5 meters	3 to 6 meters	10 - 20	Semi-mature	Fair	Footpath within falling distance Ground plants Public access: high	Codominant stems Trunk or branch cankers	within playpark.

## Inverleith ...(contd)..

## King George V Eyre Place ...(contd)..

Tree Number	Location	Common na	Height	Spread	Trunk	Age	Condition	Site features	Condition	Comments
1220	b08293	Cherry spp	Up to 5 meters	3 to 6 meters	20 - 30	Semi-mature	Good	Footpath within falling distance Ground plants Public access: high	Dead wood <30mm - minor Minor bark/trunk wound	within playpark.
1221	b08294	Willow specie	Up to 5 meters	3 to 6 meters	20 - 30	Semi-mature	Fair	Footpath under canopy Ground plants Public access: high	Multi-stemmed	
1222	b08295	Norway Mapl	5 to 10 meters	6 to 9 meters	20 - 30	Semi-mature	Fair	Footpath under canopy Ground plants Public access: high	Included Bark Limbs previous failures	
1223	b08296	Norway Mapl	5 to 10 meters	6 to 9 meters	20 - 30	Semi-mature	Fair	Footpath under canopy Ground plants Public access: high	Included Bark	
1224	b08297	Norway Mapl	5 to 10 meters	6 to 9 meters	20 - 30	Semi-mature	Fair	Footpath under canopy Ground plants Public access: high	Moderate bark/trunk wound	
1225	b08300	Norway Mapl	5 to 10 meters	3 to 6 meters	10 - 20	Semi-mature	Fair	Footpath under canopy Ground plants Public access: high	Limbs previous failures	
1226	b08299	Cherry spp	Up to 5 meters	3 to 6 meters	10 - 20	Semi-mature	Fair	Footpath within falling distance Ground plants Public access: high	Pruning stubs or broken branch Dead wood <30mm - minor	
1227	b08298	Cherry spp	Up to 5 meters	3 to 6 meters	10 - 20	Semi-mature	Fair	Footpath under canopy Ground plants Public access: high	None recorded..	
1228	b08301	Norway Mapl	5 to 10 meters	3 to 6 meters	10 - 20	Semi-mature	Fair	Footpath under canopy Ground plants Public access: high	Limbs previous failures	

## Inverleith ...(contd)..

## King George V Eyre Place ...(contd)..

Tree Number	Location	Common na	Height	Spread	Trunk	Age	Condition	Site features	Condition	Comments
1229	b08302	Lime spp	Up to 5 meters	3 to 6 meters	10 - 20	Semi-mature	Fair	Footpath within falling distance Ground plants Public access: high	Included Bark	
1230	b08303	Birch spp	5 to 10 meters	3 to 6 meters	10 - 20	Semi-mature	Fair	Footpath within falling distance Ground plants Public access: high	Pruning stubs or broken branch	
1231	b08304	Birch spp	5 to 10 meters	3 to 6 meters	10 - 20	Semi-mature	Fair	Footpath within falling distance Ground plants Public access: high	Basal wound Pruning stubs or broken branch Hanging broken branch Stem sweep/bend	
1232	b08305	Birch spp	5 to 10 meters	3 to 6 meters	10 - 20	Semi-mature	Fair	Footpath within falling distance Ground plants Public access: high	Pruning stubs or broken branch Codominant stems	
1233	b08306	Birch spp	5 to 10 meters	Up to 3 meters	10 - 20	Semi-mature	Fair	Footpath within falling distance Ground plants Public access: high	Ivy covered stem	
1234	b08307	Birch spp	5 to 10 meters	Up to 3 meters	10 - 20	Semi-mature	Fair	Footpath within falling distance Ground plants Public access: high	Ivy covered stem	
1235	b08309	Birch spp	5 to 10 meters	3 to 6 meters	20 - 30	Middle Aged	Fair	Footpath under canopy Ground plants Public access: high	Limbs previous failures	
1236	b08308	Alder spp	10 to 15 meters	6 to 9 meters	30 - 40	Middle Aged	Fair	Footpath under canopy Ground plants Public access: high	Ivy covered stem	Iv due to ivy

## Inverleith ...(contd)..

## King George V Eyre Place ...(contd)..

Tree Number	Location	Common na	Height	Spread	Trunk	Age	Condition	Site features	Condition	Comments
1237	b08310	Alder spp	10 to 15 meters	3 to 6 meters	20 - 30	Middle Aged	Fair	Footpath under canopy Ground plants Public access: high	Stem sweep/bend	
1238	b08311	Alder spp	10 to 15 meters	6 to 9 meters	30 - 40	Middle Aged	Fair	Footpath within falling distance Ground plants Public access: high	Pruning stubs or broken branch Dead wood <30mm - minor	
1239	b08312	Sycamore	10 to 15 meters	6 to 9 meters	30 - 40	Semi-mature	Fair	Footpath within falling distance Group effect or touching canopies	Pruning stubs or broken branch Dead wood <30mm - minor	
1240	b08313	Sycamore	10 to 15 meters	3 to 6 meters	20 - 30	Semi-mature	Poor	Footpath within falling distance Group effect or touching canopies	Crown dieback -major Dead wood >30mm - major Strained: tree will not recover	
1241	b08314	Common Priv	Up to 5 meters	3 to 6 meters	10 - 20	Mature	Fair	Footpath within falling distance Group effect or touching canopies	Pruning stubs or broken branch Codominant stems Limbs previous failures	
1242	b08315	Sycamore	10 to 15 meters	6 to 9 meters	30 - 40	Middle Aged	Fair	Footpath within falling distance Group effect or touching canopies	Moderate bark/trunk wound Dead wood - moderate Decay - Stem	
1243	b08316	Sycamore	5 to 10 meters	6 to 9 meters	20 - 30	Middle Aged	Fair	Footpath within falling distance Group effect or touching canopies	Limbs crossing Codominant stems	
1244	b08317	Sycamore	5 to 10 meters	3 to 6 meters	10 - 20	Semi-mature	Fair	Footpath within falling distance Group effect or touching canopies	None recorded..	

## Inverleith ...(contd)..

## King George V Eyre Place ...(contd)..

Tree Number	Location	Common na	Height	Spread	Trunk	Age	Condition	Site features	Condition	Comments
1245	b08318	Sycamore	5 to 10 meters	3 to 6 meters	10 - 20	Semi-mature	Fair	Footpath within falling distance Group effect or touching canopies	Stem sweep/bend	
1246	b08319	Sycamore	5 to 10 meters	3 to 6 meters	10 - 20	Semi-mature	Fair	Footpath within falling distance Group effect or touching canopies	Ivy covered stem Multi-stemmed	Iv due to ivy. 8318 is part of same tree
1247	b08320	Sycamore	5 to 10 meters	Up to 3 meters	10 - 20	Semi-mature	Fair	Footpath within falling distance Group effect or touching canopies	Ivy covered stem	Iv due to ivy.
1248	b08321	Sycamore	5 to 10 meters	3 to 6 meters	30 - 40	Semi-mature	Fair	Footpath within falling distance Group effect or touching canopies	Codominant stems Ivy covered stem	Iv due to ivy.
1249	b08322	Sycamore	5 to 10 meters	Up to 3 meters	30 - 40	Semi-mature	Fair	Footpath within falling distance Group effect or touching canopies	Ivy covered stem Dead wood <30mm - minor	Iv due to ivy.
1250	b08323	Sycamore	Up to 5 meters	Up to 3 meters	10 - 20	Semi-mature	Fair	Group effect or touching canopies Ground plants	Ivy covered stem	Iv due to ivy.
1251	b08324	Sycamore	5 to 10 meters	3 to 6 meters	20 - 30	Semi-mature	Fair	Group effect or touching canopies Ground plants	Ivy covered stem	Iv due to ivy.
1252	b08325	Sycamore	5 to 10 meters	Up to 3 meters	10 - 20	Semi-mature	Fair	Footpath within falling distance Group effect or touching canopies	Ivy covered stem	Iv due to ivy.
1253	b08326	Sycamore	5 to 10 meters	3 to 6 meters	20 - 30	Semi-mature	Fair	Footpath within falling distance Group effect or touching canopies	Codominant stems Ivy covered stem	Iv due to ivy.

## Inverleith ...(contd)..

## King George V Eyre Place ...(contd)..

Tree Number	Location	Common na	Height	Spread	Trunk	Age	Condition	Site features	Condition	Comments
1254	b08327	Sycamore	5 to 10 meters	3 to 6 meters	20 - 30	Semi-mature	Fair	Footpath within falling distance Group effect or touching canopies	Codominant stems Ivy covered stem Dead wood <30mm - minor	Iv due to ivy.
1255	b08328	Sycamore	5 to 10 meters	3 to 6 meters	10 - 20	Semi-mature	Fair	Footpath within falling distance Group effect or touching canopies	Ivy covered stem	Iv due to ivy.
1256	b08329	Sycamore	5 to 10 meters	Up to 3 meters	10 - 20	Semi-mature	Fair	Footpath within falling distance Group effect or touching canopies	Ivy covered stem	Iv due to ivy.
1257	b08330	Sycamore	5 to 10 meters	3 to 6 meters	20 - 30	Semi-mature	Fair	Footpath under canopy Group effect or touching canopies	Ivy covered stem	Iv due to ivy.
1258	b08331	Sycamore	5 to 10 meters	3 to 6 meters	20 - 30	Semi-mature	Fair	Footpath under canopy Group effect or touching canopies Property within falling distance	Codominant stems Ivy covered stem	Iv due to ivy.
1259	b08332	Sycamore	5 to 10 meters	Up to 3 meters	20 - 30	Semi-mature	Fair	Footpath under canopy Group effect or touching canopies Property within falling distance	Ivy covered stem	Iv due to ivy.
1260	b08333	Sycamore	5 to 10 meters	3 to 6 meters	20 - 30	Semi-mature	Fair	Footpath under canopy Group effect or touching canopies	Ivy covered stem	Iv due to ivy.
1261	b08334	Norway Mapl	Up to 5 meters	3 to 6 meters	10 - 20	Semi-mature	Fair	Footpath under canopy Group effect or touching canopies	Limbs previous failures Trunk defect/wound	



## Inverleith ...(contd)..

## King George V Eyre Place ...(contd)..

Tree Number	Location	Common na	Height	Spread	Trunk	Age	Condition	Site features	Condition	Comments
1262	b08336	Norway Mapl	5 to 10 meters	6 to 9 meters	10 - 20	Semi-mature	Fair	Footpath within falling distance Group effect or touching canopies	Branches infringing footpath/paveme Codominant stems	
1263	b08335	Sycamore	5 to 10 meters	6 to 9 meters	40 - 50	Middle Aged	Fair	Footpath within falling distance Group effect or touching canopies	Codominant stems Ivy covered stem Dead wood - moderate	Iv due to ivy
1264	b08337	Sycamore	5 to 10 meters	3 to 6 meters	20 - 30	Semi-mature	Fair	Footpath within falling distance Group effect or touching canopies Road within canopy	None recorded..	Iv due to ivy
1265	b08338	Sycamore	5 to 10 meters	6 to 9 meters	30 - 40	Middle Aged	Fair	Footpath within falling distance Group effect or touching canopies Road within canopy	Codominant stems Dead wood <30mm - minor	Iv due to ivy
1266	b08370	Norway Mapl	5 to 10 meters	6 to 9 meters	20 - 30	Middle Aged	Poor	Property within falling distance Wall or fence within canopy spread	Hanging broken branch Included Bark	
1267	b08369	Norway Mapl	5 to 10 meters	3 to 6 meters	10 - 20	Semi-mature	Fair	Group effect or touching canopies Public access: high Wall/fence within falling distance	Included Bark	Iv due to ivy. playpark within falling distance.
1268	b08339	Sycamore	5 to 10 meters	6 to 9 meters	20 - 30	Semi-mature	Poor	Footpath under canopy Group effect or touching canopies Road within canopy	Dead wood <30mm - minor Decay - Stem Multi-stemmed Limbs previous failures	
1269	b08340	Sycamore	5 to 10 meters	3 to 6 meters	20 - 30	Semi-mature	Fair	Footpath under canopy Group effect or touching canopies	Dead wood <30mm - minor Stem sweep/bend	

## Inverleith ...(contd)..

## King George V Eyre Place ...(contd)..

Tree Number	Location	Common na	Height	Spread	Trunk	Age	Condition	Site features	Condition	Comments
1270	b08341	Sycamore	5 to 10 meters	Up to 3 meters	10 - 20	Semi-mature	Fair	Footpath under canopy Group effect or touching canopies	Dead wood <30mm - minor	
1271	b08342	Sycamore	5 to 10 meters	Up to 3 meters	10 - 20	Semi-mature	Fair	Footpath under canopy Group effect or touching canopies	Dead wood <30mm - minor	
1272	b08343	Sycamore	5 to 10 meters	3 to 6 meters	20 - 30	Semi-mature	Fair	Footpath under canopy Group effect or touching canopies	Dead wood <30mm - minor	
1273	b08344	Sycamore	5 to 10 meters	3 to 6 meters	20 - 30	Semi-mature	Fair	Footpath under canopy Group effect or touching canopies	None recorded..	
1274	b08345	Sycamore	5 to 10 meters	3 to 6 meters	20 - 30	Semi-mature	Fair	Footpath under canopy Group effect or touching canopies	Stem sweep/bend	
1275	b08346	Sycamore	5 to 10 meters	3 to 6 meters	10 - 20	Semi-mature	Fair	Footpath under canopy Group effect or touching canopies Road within canopy	Included Bark Multi-stemmed	
1276	b08347	Sycamore	5 to 10 meters	3 to 6 meters	10 - 20	Semi-mature	Fair	Footpath under canopy Group effect or touching canopies Road within falling distance	None recorded..	
1277	b08348	Norway Mapk	5 to 10 meters	3 to 6 meters	20 - 30	Semi-mature	Fair	Footpath under canopy Group effect or touching canopies Road within falling distance	Included Bark	

## Inverleith ...(contd)..

## King George V Eyre Place ...(contd)..

Tree Number	Location	Common na	Height	Spread	Trunk	Age	Condition	Site features	Condition	Comments
1278	b08349	Sycamore	5 to 10 meters	3 to 6 meters	10 - 20	Semi-mature	Fair	Footpath under canopy Group effect or touching canopies Road within falling distance	None recorded..	
1279	b08350	Sycamore	5 to 10 meters	3 to 6 meters	10 - 20	Semi-mature	Fair	Footpath under canopy Group effect or touching canopies Road within canopy	Included Bark Decay - Stem Multi-stemmed	
1280	b08351	Sycamore	5 to 10 meters	3 to 6 meters	20 - 30	Semi-mature	Fair	Footpath under canopy Group effect or touching canopies Road within falling distance	Dead wood <30mm - minor	
1281	b08352	Elm spp	10 to 15 meters	6 to 9 meters	30 - 40	Middle Aged	Fair	Footpath under canopy Group effect or touching canopies Road within falling distance	Dead wood <30mm - minor	
1282	b08353	Elm spp	5 to 10 meters	Up to 3 meters	10 - 20	Juvenile	Fair	Footpath under canopy Group effect or touching canopies Road within canopy	Suppressed	
1283	b08354	Sycamore	5 to 10 meters	6 to 9 meters	30 - 40	Middle Aged	Fair	Footpath under canopy Group effect or touching canopies Road within canopy	Dead wood <30mm - minor Decay - Stem	
1284	b08355	London Plane	15 to 20 meters	Over 12 meters	90 +	Mature	Fair	Footpath under canopy Property within falling distance Road within canopy	Fungal fruiting bodies Dead wood - moderate Limbs previous failures Trunk defect/wound	

## Inverleith ...(contd)..

## King George V Eyre Place ...(contd)..

Tree Number	Location	Common na	Height	Spread	Trunk	Age	Condition	Site features	Condition	Comments
1285	b08356	Common Ash	5 to 10 meters	6 to 9 meters	30 - 40	Semi-mature	Fair	Footpath under canopy Road within canopy	Hanging broken branch Dead wood - moderate Suppressed	
1286	b08357	Sycamore	5 to 10 meters	3 to 6 meters	10 - 20	Semi-mature	Fair	Footpath under canopy Group effect or touching canopies	Suppressed	
1287	b08358	Sycamore	5 to 10 meters	6 to 9 meters	20 - 30	Semi-mature	Fair	Footpath under canopy Group effect or touching canopies	Suppressed	
1288	b08359	Common Ash	10 to 15 meters	6 to 9 meters	30 - 40	Semi-mature	Fair	Footpath under canopy Group effect or touching canopies	Dead wood - moderate	
1289	b08360	Sycamore	5 to 10 meters	3 to 6 meters	30 - 40	Semi-mature	Fair	Footpath under canopy Group effect or touching canopies	None recorded..	
1290	b08361	Common Ash	5 to 10 meters	3 to 6 meters	10 - 20	Semi-mature	Fair	Footpath under canopy Public access: high Road within falling distance	Included Bark Multi-stemmed	
1291	b08362	Norway Mapk	5 to 10 meters	Up to 3 meters	10 - 20	Semi-mature	Fair	Group effect or touching canopies Public access: high	Suppressed	
1292	b08363	Norway Mapk	5 to 10 meters	3 to 6 meters	20 - 30	Semi-mature	Fair	Group effect or touching canopies Public access: high	Included Bark Suppressed	
1293	b08364	Norway Mapk	Up to 5 meters	Up to 3 meters	10 - 20	Semi-mature	Fair	Group effect or touching canopies Public access: high	Suppressed	

## Inverleith ...(contd)..

## King George V Eyre Place ...(contd)..

Tree Number	Location	Common na	Height	Spread	Trunk	Age	Condition	Site features	Condition	Comments
1294	b08365	Sycamore	5 to 10 meters	3 to 6 meters	20 - 30	Semi-mature	Fair	Group effect or touching canopies Public access: high	Codominant stems Suppressed	
1295	b08366	Common Priv	Up to 5 meters	3 to 6 meters	10 - 20	Mature	Fair	Group effect or touching canopies Public access: high	Codominant stems Limbs previous failures Suppressed	
1296	b08367	Birch spp	5 to 10 meters	Up to 3 meters	10 - 20	Semi-mature	Fair	Footpath under canopy Group effect or touching canopies	Dead wood <30mm - minor Stem sweep/bend	
1297	b08368	Norway Mapl	5 to 10 meters	3 to 6 meters	20 - 30	Semi-mature	Fair	Footpath under canopy Group effect or touching canopies	Hanging broken branch Limbs previous failures Trunk defect/wound	
1298	b08372	Cherry spp	Up to 5 meters	3 to 6 meters	10 - 20	Semi-mature	Fair	Ground plants Public access: high Wall or fence within canopy spread	Lean - moderate Dead wood <30mm - minor	playpark within falling distance.
1299	b08371	Cherry spp	5 to 10 meters	3 to 6 meters	10 - 20	Semi-mature	Fair	Public access: high Wall or fence within canopy spread	Pruning wounds - bulges in trunk	playpark within falling distance.
1300	b08373	Goat Willow	5 to 10 meters	3 to 6 meters	10 - 20	Semi-mature	Fair	Public access: high Wall or fence within canopy spread	Multi-stemmed	playpark within falling distance.
1301	b08374	Birch spp	5 to 10 meters	Up to 3 meters	10 - 20	Semi-mature	Good	Public access: high Wall or fence within canopy spread	Dead wood <30mm - minor	playpark within falling distance.
1302	b08375	Alder spp	10 to 15 meters	3 to 6 meters	20 - 30	Middle Aged	Fair	Property within falling distance Public access: high	Moderate bark/trunk wound Included Bark Decay - Stem	

## Inverleith ...(contd)..

## King George V Eyre Place ...(contd)..

Tree Number	Location	Common na	Height	Spread	Trunk	Age	Condition	Site features	Condition	Comments
1303	b08376	Goat Willow	Up to 5 meters	Up to 3 meters	10 - 20	Semi-mature	Poor	Public access: high Wall or fence within canopy spread	Pruning stubs or broken branch Moderate bark/trunk wound Dead wood <30mm - minor Stem sweep/bend	branches encroaching play area. playpark within falling distance.
1304	b08378	Alder spp	10 to 15 meters	3 to 6 meters	30 - 40	Middle Aged	Fair	Property within falling distance Wall or fence within canopy spread	Moderate bark/trunk wound	
1305	b08377	Birch spp	5 to 10 meters	Up to 3 meters	10 - 20	Semi-mature	Fair	Public access: high Wall or fence within canopy spread	Moderate bark/trunk wound Stem sweep/bend Suppressed	playpark within falling distance.
1306	b08379	Birch spp	10 to 15 meters	6 to 9 meters	30 - 40	Middle Aged	Fair	Public access: high Wall or fence within canopy spread	Pruning stubs or broken branch Dead wood <30mm - minor	branches encroaching play area
1307	b08380	Goat Willow	5 to 10 meters	6 to 9 meters	10 - 20	Semi-mature	Fair	Property within falling distance Public access: high Wall or fence within canopy spread	Included Bark Multi-stemmed	branches encroaching play area
1308	b08381	Norway Mapl	5 to 10 meters	3 to 6 meters	20 - 30	Semi-mature	Fair	Public access: high Wall or fence within canopy spread	Included Bark Trunk defect/wound	playpark within falling distance.
1309	b08382	Cherry spp	5 to 10 meters	3 to 6 meters	20 - 30	Middle Aged	Fair	Public access: high Wall or fence within canopy spread	Pruning wounds - bulges in trunk Suppressed	
1310	b08383	Norway Mapl	5 to 10 meters	6 to 9 meters	20 - 30	Semi-mature	Fair	Property within falling distance Public access: high Wall or fence within canopy spread	Included Bark	

## Inverleith ...(contd)..

## King George V Eyre Place ...(contd)..

Tree Number	Location	Common na	Height	Spread	Trunk	Age	Condition	Site features	Condition	Comments
1311	b08384	Norway Mapl	5 to 10 meters	6 to 9 meters	20 - 30	Semi-mature	Fair	Property within falling distance Public access: high Wall or fence within canopy spread	Included Bark	
1312	b08386	Norway Mapl	Up to 5 meters	6 to 9 meters	20 - 30	Semi-mature	Fair	Footpath under canopy Ground plants	Included Bark	
1313	b08385	Norway Mapl	5 to 10 meters	6 to 9 meters	20 - 30	Semi-mature	Fair	Footpath under canopy Property within falling distance	Moderate bark/trunk wound Included Bark	
1314	b08387	Common Ash	5 to 10 meters	3 to 6 meters	10 - 20	Semi-mature	Fair	Footpath within falling distance Group effect or touching canopies	Moderate bark/trunk wound	
1315	b08388	Cherry spp	5 to 10 meters	3 to 6 meters	10 - 20	Semi-mature	Fair	Group effect or touching canopies Ground plants	None recorded..	
1316	b08389	Lime spp	Up to 5 meters	3 to 6 meters	10 - 20	Semi-mature	Fair	Footpath within falling distance Group effect or touching canopies	Included Bark	
1317	b08390	Cherry spp	Up to 5 meters	3 to 6 meters	10 - 20	Semi-mature	Fair	Footpath within falling distance Group effect or touching canopies	None recorded..	
1318	b08391	Lime spp	5 to 10 meters	3 to 6 meters	10 - 20	Semi-mature	Fair	Footpath within falling distance Group effect or touching canopies	Included Bark	
1319	b08392	Norway Mapl	5 to 10 meters	3 to 6 meters	10 - 20	Semi-mature	Fair	Group effect or touching canopies Ground plants	Limbs previous failures	

## Inverleith ...(contd)..

## King George V Eyre Place ...(contd)..

Tree Number	Location	Common na	Height	Spread	Trunk	Age	Condition	Site features	Condition	Comments
1320	b08393	Common Ash	5 to 10 meters	3 to 6 meters	10 - 20	Semi-mature	Poor	Footpath within falling distance Group effect or touching canopies	Codominant stems Hanging broken branch Included Bark	
1321	b08394	Common Ash	5 to 10 meters	3 to 6 meters	20 - 30	Semi-mature	Fair	Footpath within falling distance Group effect or touching canopies	Included Bark	
1322	b08395	Common Ash	5 to 10 meters	3 to 6 meters	10 - 20	Semi-mature	Good	Group effect or touching canopies Ground plants	None recorded..	
1323	b08396	Cherry spp	5 to 10 meters	Up to 3 meters	10 - 20	Semi-mature	Poor	Group effect or touching canopies Ground plants	Codominant stems	
1324	b08397	Common Ash	5 to 10 meters	3 to 6 meters	20 - 30	Semi-mature	Good	Footpath within falling distance Group effect or touching canopies Ground plants	None recorded..	
1325	b08398	Cherry spp	5 to 10 meters	3 to 6 meters	20 - 30	Semi-mature	Good	Group effect or touching canopies Ground plants	Dead wood <30mm - minor	
1326	b08399	Lime spp	5 to 10 meters	3 to 6 meters	10 - 20	Semi-mature	Fair	Footpath within falling distance Group effect or touching canopies Ground plants	None recorded..	
1327	b08400	Cherry spp	5 to 10 meters	3 to 6 meters	20 - 30	Semi-mature	Fair	Group effect or touching canopies Ground plants	Codominant stems Included Bark	
1328	b08401	Cherry spp	5 to 10 meters	Up to 3 meters	10 - 20	Semi-mature	Fair	Group effect or touching canopies Ground plants	Suppressed	



## Inverleith ...(contd)..

## King George V Eyre Place ...(contd)..

Tree Number	Location	Common na	Height	Spread	Trunk	Age	Condition	Site features	Condition	Comments
1329	b08402	Lime spp	5 to 10 meters	3 to 6 meters	20 - 30	Semi-mature	Fair	Footpath within falling distance Group effect or touching canopies Ground plants	None recorded..	
1330	b08403	Lime spp	5 to 10 meters	3 to 6 meters	10 - 20	Semi-mature	Fair	Footpath within falling distance Group effect or touching canopies Ground plants	None recorded..	
1331	b08404	Cherry spp	5 to 10 meters	3 to 6 meters	10 - 20	Middle Aged	Good	Footpath within falling distance Group effect or touching canopies Ground plants	None recorded..	
1332	b08405	Ash spp	5 to 10 meters	3 to 6 meters	20 - 30	Semi-mature	Fair	Footpath within falling distance Group effect or touching canopies Ground plants	None recorded..	
1333	b08406	Cherry spp	5 to 10 meters	3 to 6 meters	20 - 30	Middle Aged	Fair	Footpath within falling distance Group effect or touching canopies Ground plants	Moderate bark/trunk wound	
1334	b08407	Common Ash	5 to 10 meters	Up to 3 meters	10 - 20	Semi-mature	Fair	Footpath within falling distance Group effect or touching canopies Ground plants	None recorded..	
1335	b08408	Common Ash	5 to 10 meters	6 to 9 meters	20 - 30	Semi-mature	Fair	Footpath under canopy Group effect or touching canopies Ground plants	Included Bark Limbs previous failures	

## Inverleith ...(contd)..

## King George V Eyre Place ...(contd)..

Tree Number	Location	Common na	Height	Spread	Trunk	Age	Condition	Site features	Condition	Comments
1336	b08409	Common Ash	5 to 10 meters	6 to 9 meters	20 - 30	Semi-mature	Fair	Footpath under canopy Group effect or touching canopies Ground plants	Dead wood <30mm - minor	
1337	b08410	Common Ash	5 to 10 meters	6 to 9 meters	20 - 30	Semi-mature	Fair	Footpath under canopy Group effect or touching canopies Ground plants	Dead wood <30mm - minor	
1338	b08411	Cherry spp	5 to 10 meters	3 to 6 meters	20 - 30	Middle Aged	Fair	Footpath within falling distance Group effect or touching canopies Ground plants	None recorded..	
1339	b08412	Common Ash	5 to 10 meters	3 to 6 meters	20 - 30	Semi-mature	Fair	Footpath within falling distance Group effect or touching canopies Ground plants	Dead wood <30mm - minor	
1340	b08413	Cherry spp	5 to 10 meters	3 to 6 meters	20 - 30	Middle Aged	Fair	Footpath within falling distance Group effect or touching canopies Ground plants	Dead wood <30mm - minor	
1341	b08414	Common Bee	5 to 10 meters	3 to 6 meters	10 - 20	Juvenile	Fair	Footpath within falling distance Group effect or touching canopies Ground plants	Stem sweep/bend	
1342	b08415	Common Ash	5 to 10 meters	3 to 6 meters	10 - 20	Semi-mature	Fair	Footpath within falling distance Group effect or touching canopies Ground plants	None recorded..	

## Inverleith ...(contd)..

## King George V Eyre Place ...(contd)..

Tree Number	Location	Common na	Height	Spread	Trunk	Age	Condition	Site features	Condition	Comments
1343	b08416	Common Bee	5 to 10 meters	3 to 6 meters	10 - 20	Juvenile	Fair	Footpath within falling distance Group effect or touching canopies Ground plants	Suppressed	
1344	b08417	Common Bee	5 to 10 meters	Up to 3 meters	10 - 20	Juvenile	Fair	Footpath within falling distance Group effect or touching canopies Ground plants	Suppressed	
1345	b08288	Cherry spp	5 to 10 meters	3 to 6 meters	10 - 20	Semi-mature	Fair	Footpath under canopy Group effect or touching canopies Public access: high	Pruning stubs or broken branch	
1346	b08287	Norway Mapl	5 to 10 meters	6 to 9 meters	20 - 30	Semi-mature	Fair	Footpath under canopy Group effect or touching canopies Public access: high	Included Bark	
1347	01 - 550 - 1	Wych Elm	5 to 10 meters	3 to 6 meters	20 - 30	Semi-mature	Dead	None recorded..	Last Year's Aerial Multi-stemmed Tree not marked Potential Breeder	Tree not marked. Possibly a breeder? At least one other tree in front infected. Tree on top of south entrance to tunnel walkway/cycleway, west side of the 'Yard' Adventure Centre. Access through Rodney Place, will have to climb on top of south wall of carpark to get to tree.

**Inverleith ...(contd)..**

**King George V Eyre Place ...(contd)..**

Tree Number	Location	Common na	Height	Spread	Trunk	Age	Condition	Site features	Condition	Comments
1348	02 - 550 - 1	Wych Elm	5 to 10 meters	3 to 6 meters	10 - 20	Semi-mature	Poor	None recorded..	Multi-stemmed Potential Breeder This Year's Root Infection	Tree on top of south entrance to old tunnel walkway/cycleway to the west side of the 'Yard' Adventure Centre. The only access is through Rodney Place, will have to climb on top of south wall of carpark to get to tree.

Sub-total: 299 trees

Total: 299 trees

**Notes:-**

**Overall total: 299 trees -**

Tree Works report -

