



## CONSULTATION INFORMATION BOOKLET

See the proposed master plan for Saughton Park and have your say on the designs by 6 April.



Supported by  
**The National Lottery**<sup>®</sup>  
through the Heritage Lottery Fund



• EDINBURGH •  
YOUR COUNCIL - YOUR ENVIRONMENT

## INTRODUCTION

The City of Edinburgh Council has been working with the Royal Caledonian Horticulture Society, the Friends of Saughton Park and the local community to develop proposals to revitalise Saughton Park.

We have carried out surveys, workshops and meetings to find out how you use the park, what is important to you and what would help you to enjoy your visit even more. This information has been used to develop master plan proposals for the park.

These proposals will be used to support the Council's second and final round Heritage Lottery Fund (HLF) 'Parks for People' bid in August for £3.7million to carry out necessary works to restore and improve the park.

## HAVE YOUR SAY

We would now like to get your views on these proposals. This booklet gives you the information you need before you can complete the consultation questionnaire.

You can find out more and complete a questionnaire in a number of ways, see the back page for details. Make sure you complete your questionnaire in plenty of time to ensure your views are taken on board. This consultation closes on 6 April 2015.

### Vision for Saughton Park

The Saughton Park Restoration Project aims to restore the park to its former glory as a major visitor destination which showcases horticultural excellence and offers exceptional recreational and visitor facilities, opportunities for learning and volunteering and engenders a sense of pride in the neighbouring communities.

## Proposed master plan for Saughton Park

### Management and maintenance

A new fully costed 10 year management and maintenance plan for the park will help ensure that the park is looked after to a high standard once all the works are complete.

### Managing trees

A tree management plan will be put in place to protect important heritage trees and replace damaged, dying or lost trees. It may be that some trees are removed to accommodate improvements to the site or to replace with more suitable trees such as willow.

### Costing the master plan

We will be carrying out cost estimates at various points during the design process and if costs exceed our budget not everything being proposed will be included in the HLF bid application. However any proposals not included could remain part of the master plan and separate funding secured for them at a later stage.

### Developing the proposals

The master plan will be refined further to take into account your feedback, budget constraints and any further survey work felt necessary.

### Activity plan

An activity plan will ensure a diverse range of events and activities for everyone to enjoy. A new community and volunteer development officer, funded by the café income, would help to co-ordinate what happens in the park, recruit and support volunteers and support community activities.







## Old Stable Block and Yard

The feedback you have given us supports the development of a new café, public toilets and a community space that can be used for meetings, lectures, education and other activities as well as being available for hire by the local community. It's proposed to host these facilities in the Old Stable Block and Yard.



## Garden cafe



Demonstration garden looking towards café at dusk.



Inside café with views out to the gardens.



1. Café

---

2. WCs

---

3. Demonstration garden

---

4. Café terrace

---

5. Service yard

---

6. Entrance courtyard

---

7. Stable block restored

---

8. Covered area

---

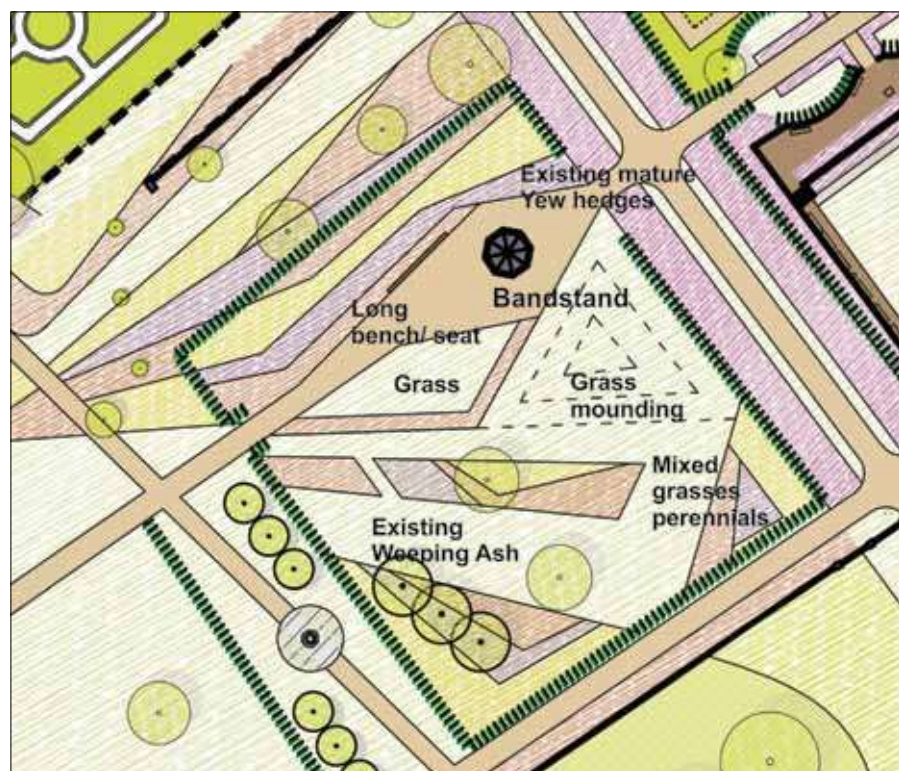
9. Raised beds

---

10. Greenhouse

## The bandstand

Many of you have supported the idea of restoring the historic bandstand and using it for performances throughout the summer.



The refurbished bandstand will be located in the Walled Gardens where the annual beds are currently. New landscaping, improved planting and grassed areas will provide an attractive backdrop where spectators can sit to enjoy performances.

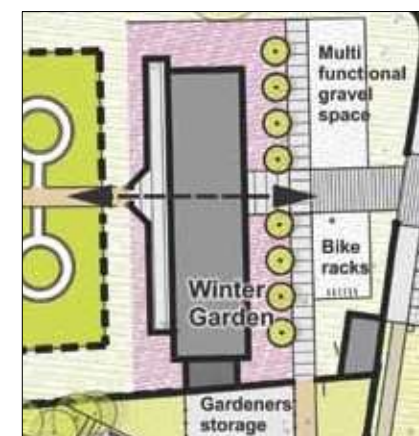
## Winter Garden

Many of you enjoy using the Winter Garden but feel it needs a bit of a facelift. We'll refurbish or replace the existing Winter Gardens using glass panels and an improved internal layout with space in the middle for gatherings and activities.



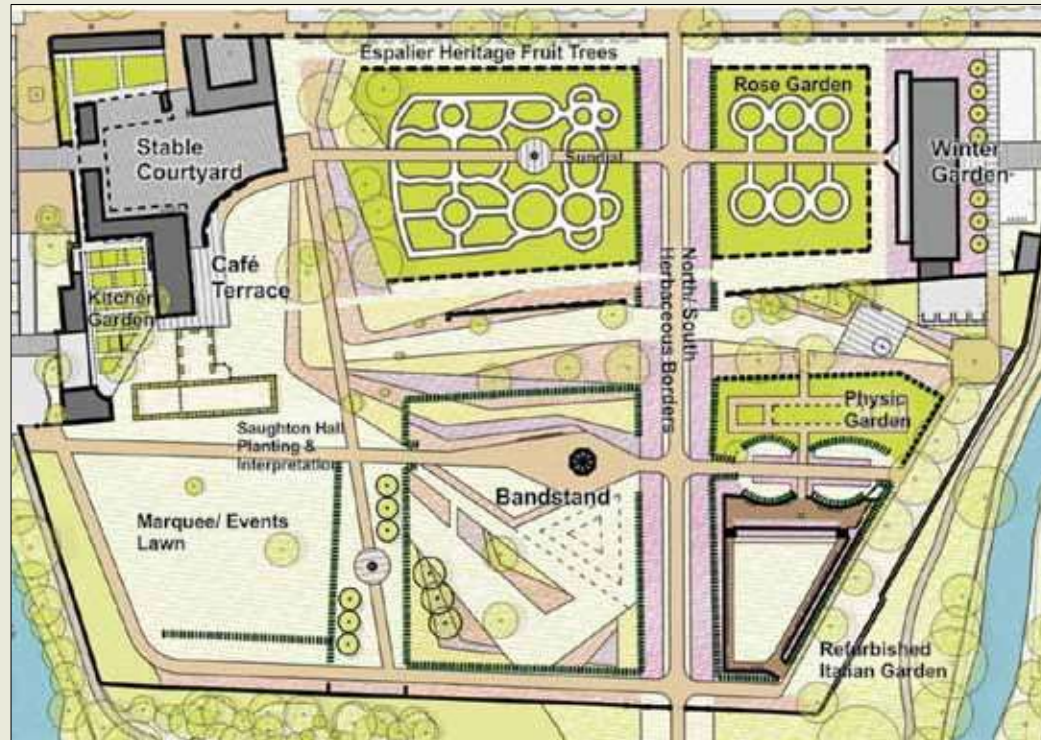
New entrances will be positioned centrally which will provide an attractive entrance to the Winter Gardens.

The older ancillary buildings will be demolished and a new garden store area incorporated. Attractive landscaping will create a sense of arrival through the east gate.





## Walled Gardens



Your feedback has suggested that the rose beds and other planting within the Walled Gardens are important to you but you feel that they could be improved.



The rose beds will be replanted with roses and companionship plants to provide a longer season of colour. Espalier fruit trees will be planted against the south facing walls while climbing roses and other plants will be grown up trellises and the north facing walls.

New perennial floral displays along the north-south axis paths will provide a glory of colour in the summer.



There will be improvements to the Italian Garden and changes to layout just to the north of the Italian Garden will provide new opportunities, maybe as a physic garden, a community garden or a sensory garden with raised beds.



The south west area of the Walled Gardens will have an open lawn which can be used for social gatherings. Electrical power points here and in other parts of the gardens will make it easier for organising community events and activities.



## Main Drive

The Main Drive which runs east to west is in poor repair and improvements will see the creation of a smooth and well lit walking and cycling surface to provide an attractive and safe route into the park.



## Better access and circulation

A new pedestrian and cycle path will provide access to a new entrance at the corner of Stevenson Drive and Balgreen Road. This will provide a stronger link to Balgreen tram stop as well as providing an off-road option for cyclists.

New perimeter paths will improve access around the park and provide stronger links to the Millennium Woodland and the Water of Leith.

## Play and sport

We would like to extend and improve the children's playground to make it more inclusive to children with disabilities and increase natural play opportunities.

The sports pitches will be landscaped to provide natural seating mounds for spectators and a couple of them to the west of the park realigned with improved drainage to make better use of the space.

Outdoor gym equipment and a new circular path system will provide opportunities for outdoor fitness.





## Water of Leith area



We want to retain the charm of the area to the south of the Walled Gardens. A new path and viewpoint will allow people to get closer to the water, and if possible we would like to install a micro-hydro system to generate power for the park.



## Improvements to entrances and boundaries

The galvanised palisade fencing around the north end of the park will be removed and maybe replaced with something more in keeping with the park. The perimeter woodland will be underplanted with flowering bulbs such as bluebells which will benefit wildlife as well as creating an attractive boundary for the park.

## Welcoming entrances

The Balgreen and Ford's Road entrances will be improved to provide safer and more welcoming arrival points for the park. Parking areas will be surfaced and laid out to make best use of the space, with disabled bays and cycle parking provided.



## Other improvements

Old fencing, barbed wire, lighting, broken park furniture and obsolete buildings will be removed and walls and paths repaired. New benches, bins, lighting and information signage will be installed where necessary.

## Events and activities

You have given us lots of ideas for events and activities you wish to see in the park and a flavour of what's proposed is shown below.

### ● Celebrating the heritage of Saughton

A volunteer-led oral history project will record people's memories and stories of Saughton while a heritage exhibition to mark the park's re-opening and other materials will tell the story of the park's rich cultural and natural heritage.

Staff and volunteers will offer guided walks and talks about the park and they be trained to help children and families work towards the John Muir Award.

### ● Promoting horticultural excellence

Various horticulture courses will be on offer for amateur and experienced gardeners and students. Lectures, workshops and masterclasses will be part of this offering as will regular plant sales and seed swaps.

There will be a range of opportunities to get involved with horticultural activities in the gardens as an access to work, as a way for people to integrate with the community or for therapeutic purposes.

### ● Creating a welcoming park for all

Large welcome signs with maps will be located at all entrances. Visitor information will be produced for use on the web, printed material and audio downloads. Posters and leaflets will raise awareness of what the park has to offer.

Construction site tours will allow people to see the transformation first hand and an exciting celebratory opening event will welcome people back into the park after construction works are complete.





- **Putting the community into the centre of park life**

A new Park Community Management Committee made up of residents, staff and partners will take responsibility for decisions on management and maintenance priorities and the events and activity programme.

Volunteers will be able to sign up for the Gardening Gang, to help with events and activities, to carry out visitor, wildlife and plant surveys and to get involved with litter picks and conservation management activities.

The Stables Community Venue will be available for hire for a range of purposes and educational activity boxes will be developed for schools and other groups to run children's activities in the park.

- **Developing a vibrant cultural programme**

A diverse programme of events will be run each year, with larger events limited to two to three times a year to ensure the integrity of the park is not compromised. This will involve a regular market and a mix of events such as art exhibitions, theatre, music and themed festivities to celebrate the seasons.

Regular smaller community and family fun events such as teddy bear hunts, tea dances and summer Bandstand performances will be organised by the Friends of Saughton Park and others. A unique Saughton Park festival will be developed to run each year to celebrate all that the park has to offer.

- **Getting fresh air fit**

New circular routes will provide an excellent opportunity for walking and running, and people can take part in organised health walks or park runs. Geocaching and orienteering will provide fun ways of getting out and about while the community venue and the outdoors could be used for clubs and classes which would offer a range of ways to get or keep fit.



## Completing the questionnaire

To make sure your views on these proposals are taken in account you now need to complete a questionnaire:

- **ONLINE** at [www.edinburgh.gov.uk/saughtonpark](http://www.edinburgh.gov.uk/saughtonpark)

- **AT THESE STAFFED EXHIBITIONS AND EVENTS**

Fri 6 March	12noon to 3pm	Winter Gardens, Saughton Park
Sat 14 March	10am to 3pm	Spring Fever Event, Saughton Park
Thu 19 March	6pm to 9pm	Slateford Green Community Centre
Wed 25 March	1pm to 6pm	Carrickvale Community Centre
Sat 28 March	12noon to 3pm	Winter Gardens, Saughton Park
Sat 4 April	12noon to 3pm	Easter Bear Hunt, Saughton Park



- **AT THESE UNSTAFFED EXHIBITIONS**

Mon 2 March to Mon 6 April	Winter Gardens, Saughton Park
Mon 2 March to Sun 8 March	Fountainbridge Library
Mon 9 March to Sun 15 March	Central Library
Mon 16 March to Sun 22 March	St Brides Community Centre
Mon 23 March to Sun 29 March	Carrickvale Community Centre
Mon 30 March to Wed 1 April	Hermitage of Braid Visitor Centre
Thu 2 April to Mon 6 April	Sainsbury's, Gorgie

### FIND OUT MORE

[www.edinburgh.gov.uk/saughtonpark](http://www.edinburgh.gov.uk/saughtonpark)

[parks@edinburgh.gov.uk](mailto:parks@edinburgh.gov.uk) 0131 608 1100

 Edinburgh-Outdoors  @EdinOutdoors

**This consultation closes on 6 April 2015.**

## What happens next?

### DEVELOPMENT PHASE

April 2015 to June 2015

Finalise proposals and seek approval from Transport and Environment Committee

July 2015 to August 2015

Prepare and submit our HLF second round bid application

December 2015

HLF make a decision and tell us if our bid has been successful

### DELIVERY PHASE (if bid successful)

January 2016 to December 2016

Prepare technical designs and tender documentation

January 2017 to July 2017

Procurement of build contractors

August 2017 to December 2018

Construction phase



You can get this document on tape, in Braille, large print and various computer formats if you ask us. Please contact ITS on 0131 242 8181 and quote reference number 14-1543. ITS can also give information on community language translations.