



THE EDINBURGH PARTNERSHIP

LUNCH PRESENTATION

Thursday 28 September 2017

13.30 to 14.20

Edinburgh Local Development Plan

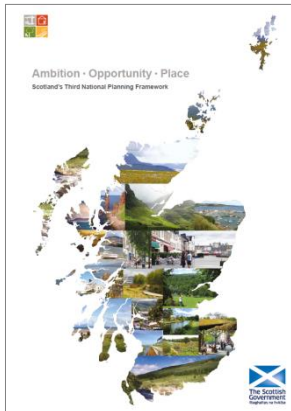
Edinburgh Partnership Board

28 September 2017



Planning Policy Hierarchy

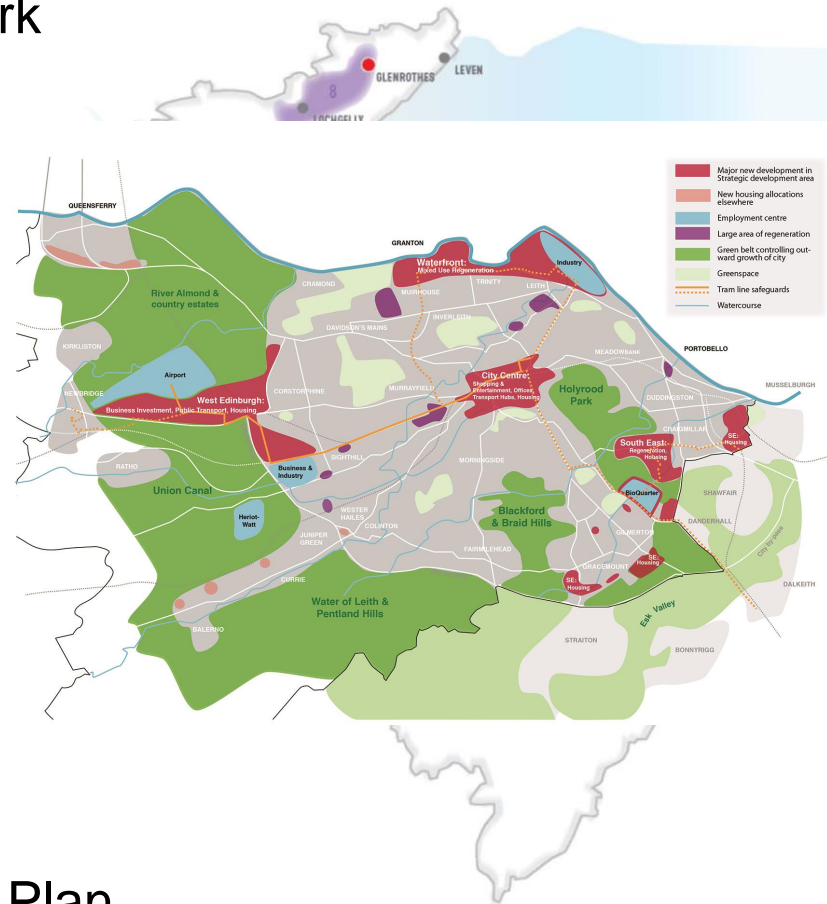
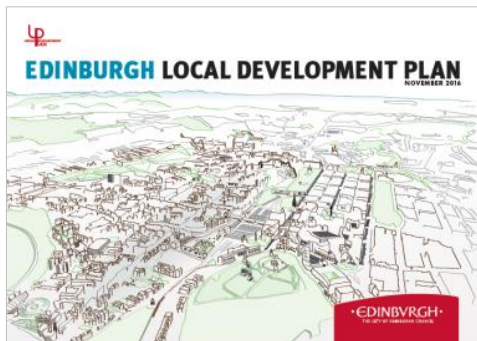
National Planning Framework
(Scottish Government)



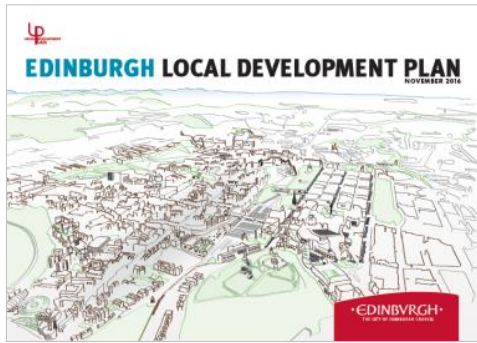
Strategic Development Plan
(SESplan)



Local Development Plan
(City of Edinburgh Council)

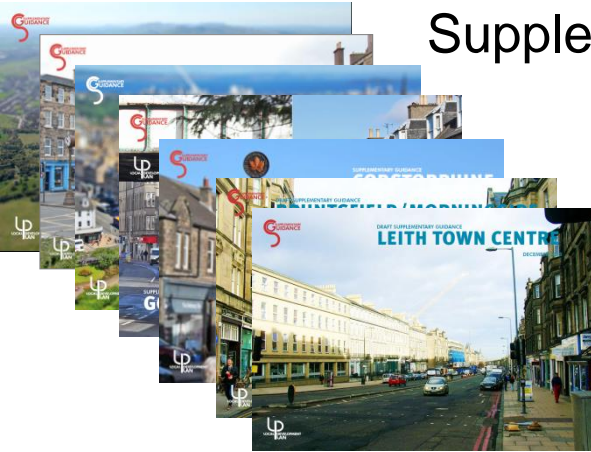


Planning Policy Hierarchy



Local Development Plan

Supplementary Guidance



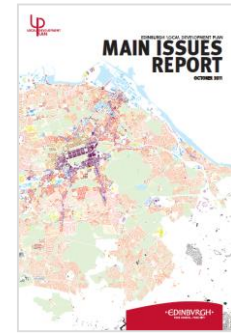
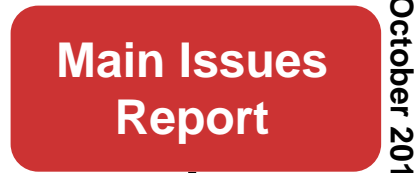
Non-Statutory Guidance



Part of the development plan

LDP

Stage 1



3 months consultation

Stage 2



Representations 6 wks)

Stage 3



Representations 6 wks)

Stage 4

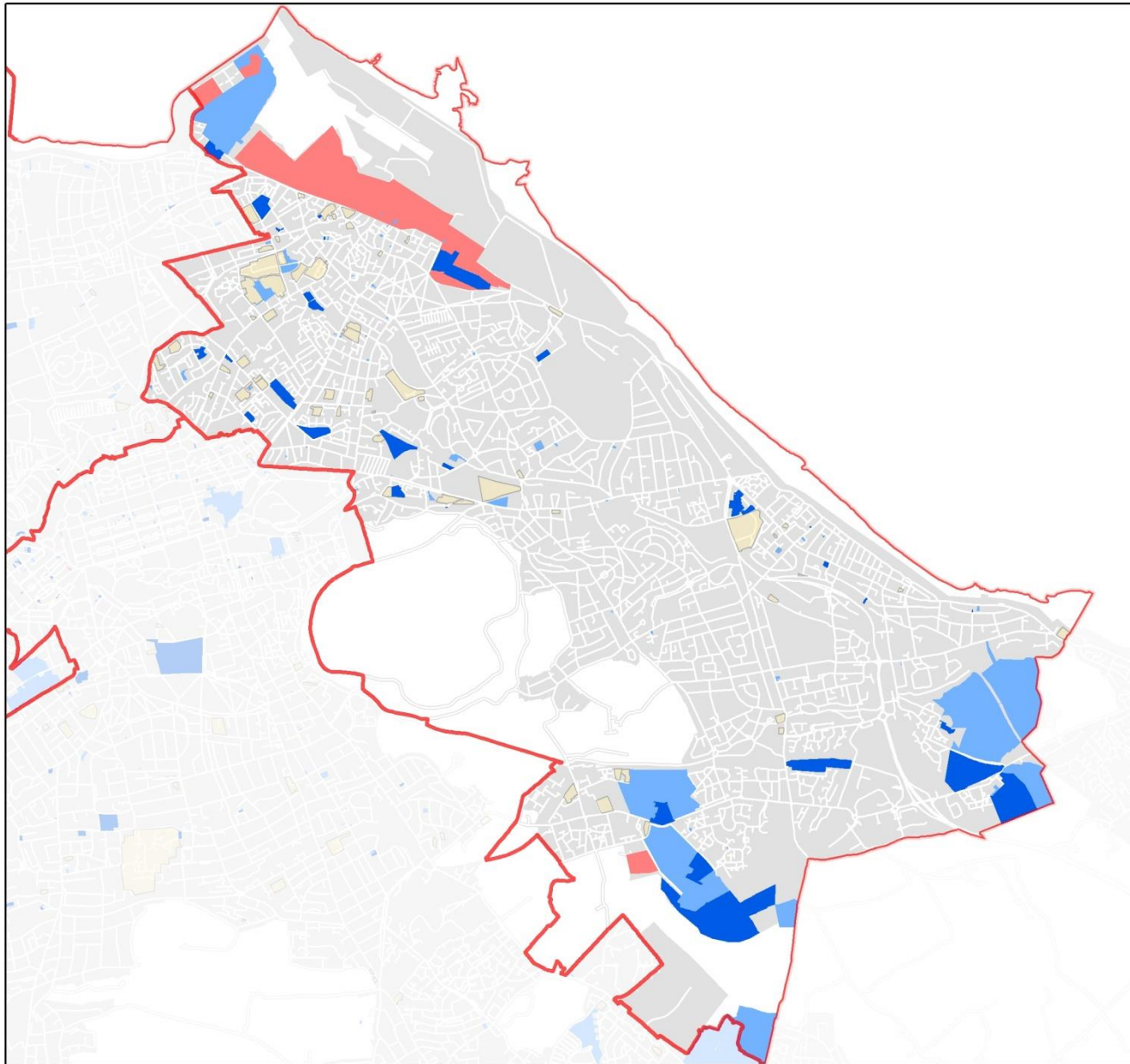
Stage 5



Stage 6



Evaluation




Legend

3,331  Under Construction

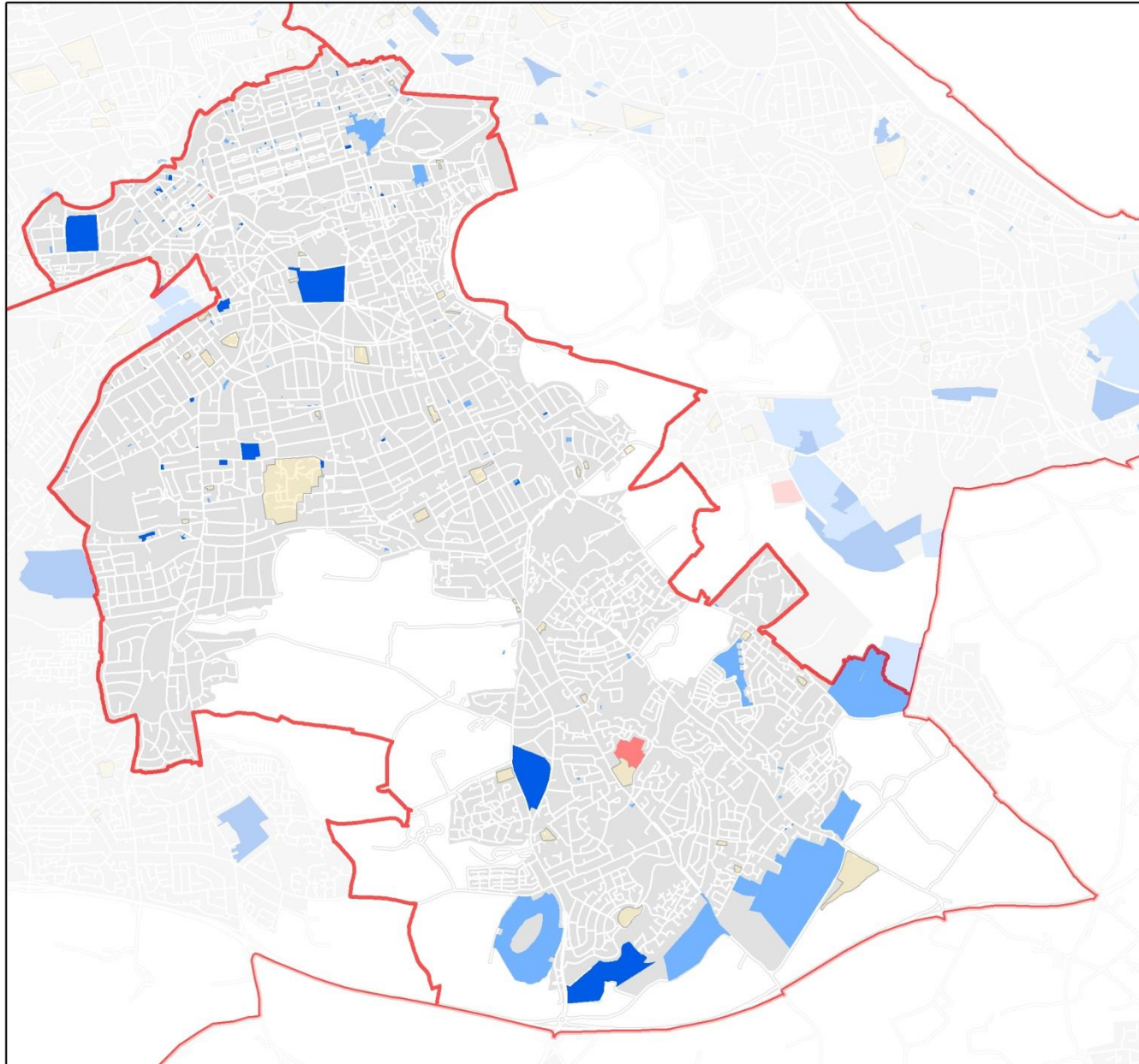
5,128  Other Effective

4,231  Constrained

12,690

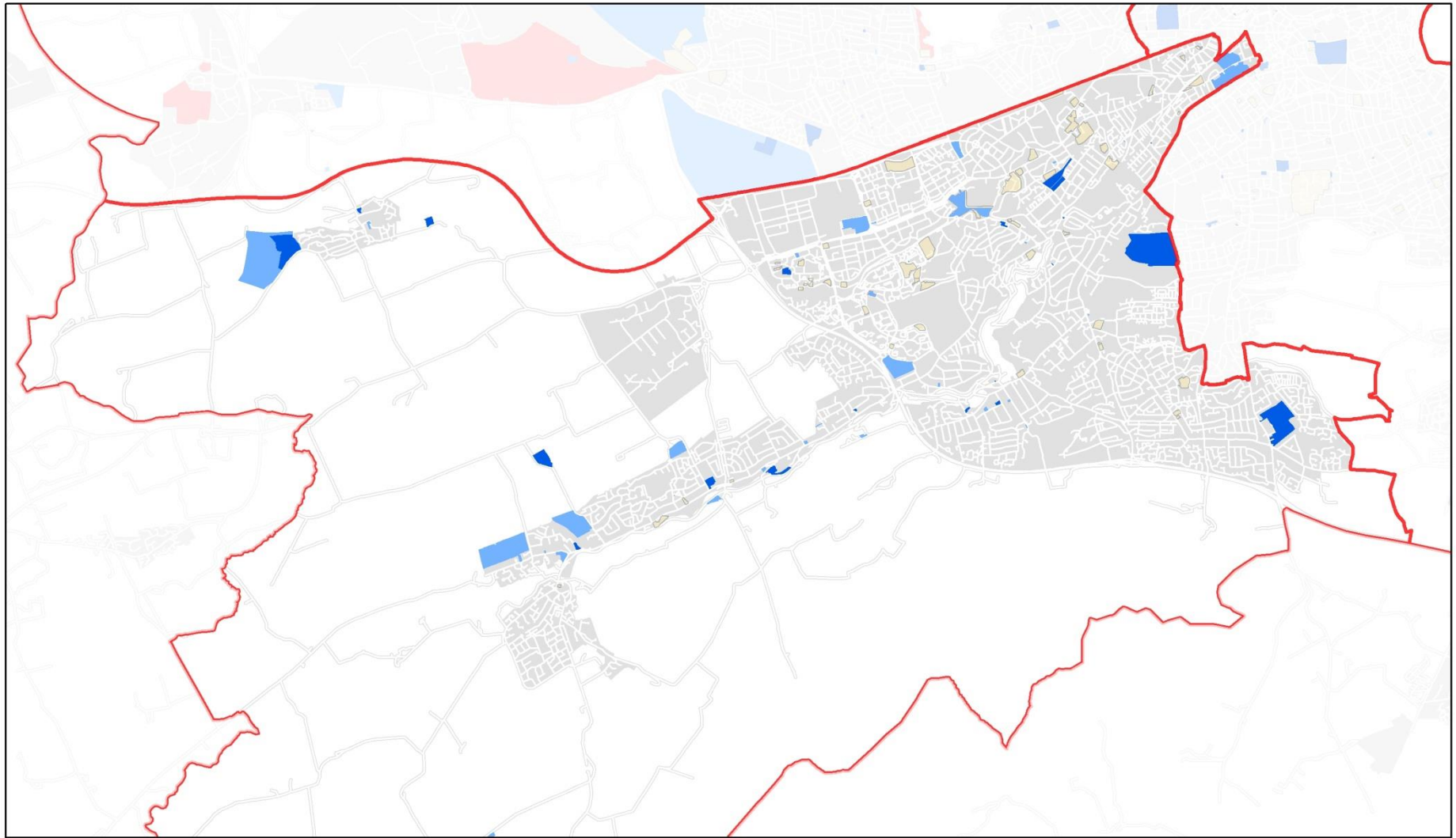
 Other housing potential

North East Locality
Housing Land Supply



Legend	
1,052	Under Construction
2,630	Other Effective
251	Constrained
<hr/>	
3,933	
	Other housing potential

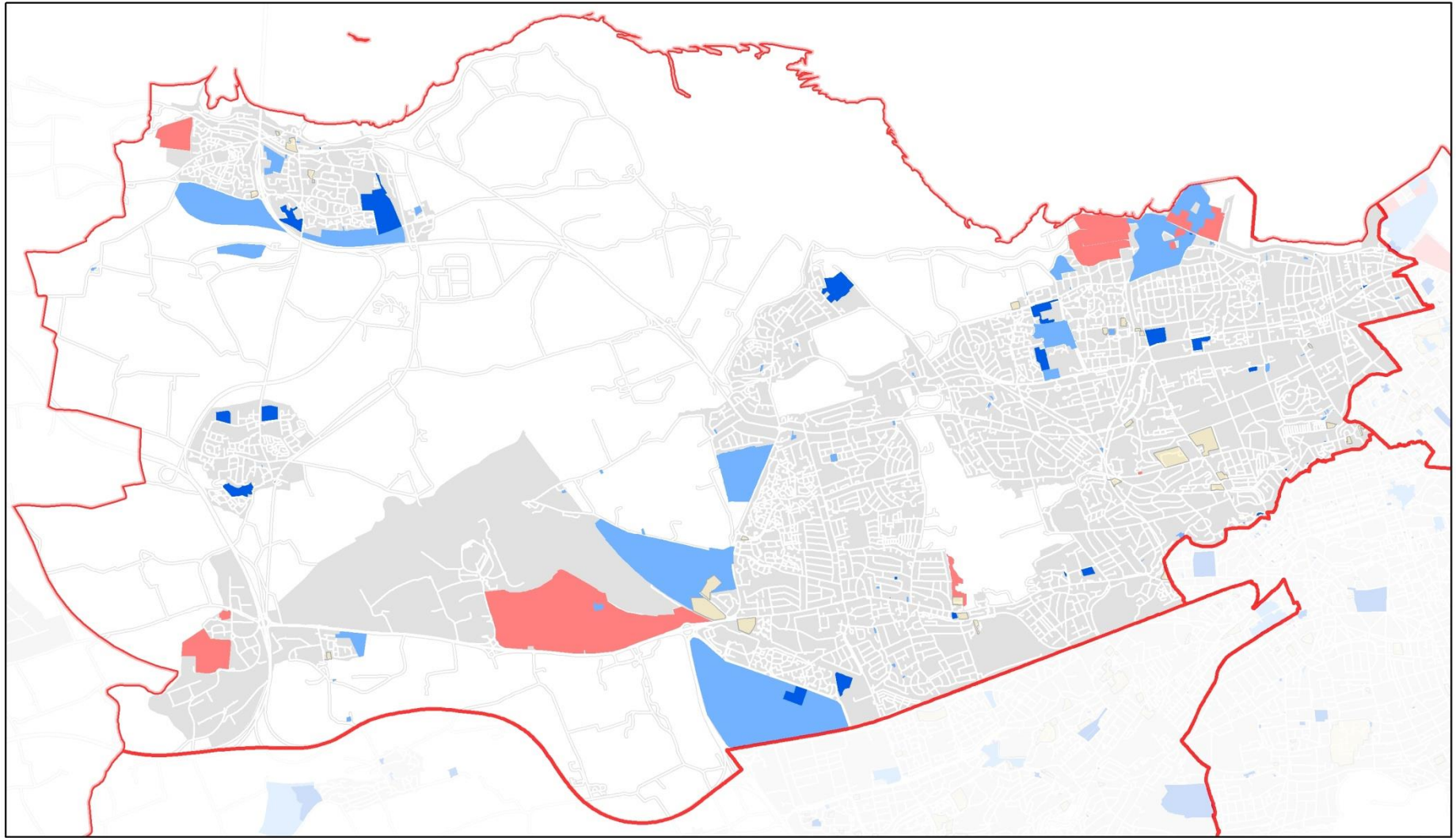
South East Locality
Housing Land Supply



529 Under Construction
1,871 Other Effective
0 Constrained
2,400

Other housing potential

South West Locality Housing Land Supply



1,090 **Under Construction**
7,801 **Other Effective**
3,360 **Constrained**

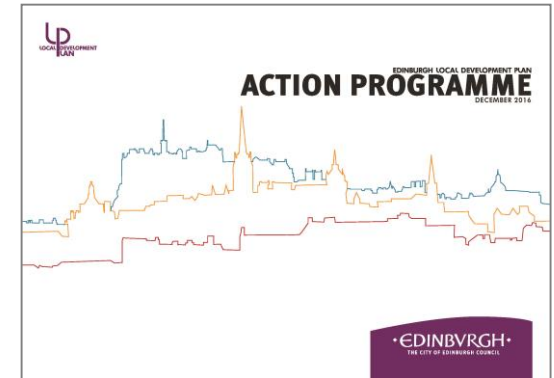
Other housing potential

12,251

North West Locality Housing Land Supply

LDP Action Programme

- Cumulative impacts:
 - transport, education
 - healthcare, greenspace
- Contribution Zones
- Identifies actions & costings
- Links to Supplementary Guidance
- Developer contributions will not cover all costs – funding gaps
- Update annually



Community Planning & Spatial Planning

DELIVERING SERVICES IN A GROWING CITY

OUTCOMES

Community Plan

Local Development Plan

Action Programme

Prepared by
Edinburgh
Partnership

Delivered
through
Localities

Prepared
by Council

Delivered by
Planning &
Building
Standards

Prepared
by Council

Delivered
through
Action
Programme
Governance

Sets strategy for service
delivery in the city

Is the spatial expression
of the community plan

Set out actions required
to deliver the LDP
and spatial aspects of
community plan

- Joined up service delivery and infrastructure investment.
- Full costs of growth estimated and planned for

Partners'
Asset
Strategies

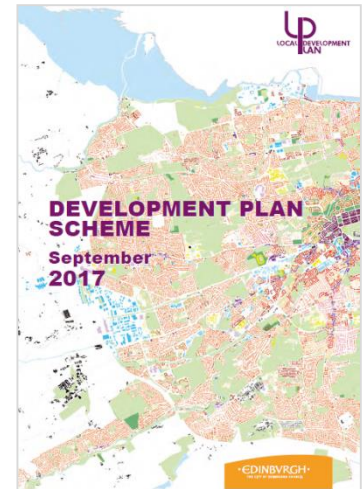
Working arrangements providing feedback & intelligence for future plans

Actions for Partners

- Consider adopted Local Development Plan and its Action Programme
- Implications:
 - Service delivery
 - Infrastructure investment / asset strategies
- Involvement in LDP 2 project:
 - Early work: start 2018
 - Consultation in late 2018
 - Proposed Plan in 2019
 - Adoption by end 2020

Engagement

- Consultation Hub
- Development Plan Scheme
- Stakeholder Feedback on first LDP
- LDP 2 – after SDP 2
- 2050 City Vision
- New Community Plan
- Locality Improvement Plans



Strategic Framework



@planningedin

www.edinburgh.gov.uk/localdevelopmentplan





THE EDINBURGH PARTNERSHIP

LUNCH PRESENTATION

Thursday 28 September 2017

13.30 to 14.20



B O A R D M E E T I N G

Thursday 28 September 2017

14.30-16.30

Item 4



THE EDINBURGH PARTNERSHIP

Edinburgh Partnership Community Plan 2018/23

(Local Outcome Improvement Plan 2018/23)



Brief.....

Co-produce a radical and innovative plan, which reduces poverty and inequality, empowers communities, and creates a sustainable city, through collaborative preventative action....



Agreed Structure

Section

1. Introduction
2. Values and Principles
3. Strategic Needs Assessment
4. Strategic Outcomes and Prevention Objectives
5. Partnership and Governance
6. Community Participation and Empowerment
7. Performance Reporting



1. Introduction

- City + regional + national + European + international context
- Edinburgh City Vision 2050
- Introduction to the Edinburgh Partnership 'family'
- Community Plan Vision 2023
- Summary of the plan outcomes
- Links to the rest of the strategic planning framework
- Christie + public service reform agenda + national drivers
- Importance of community participation and empowerment



2. Values and Principles

The ambitions can only be delivered if we get the culture right....

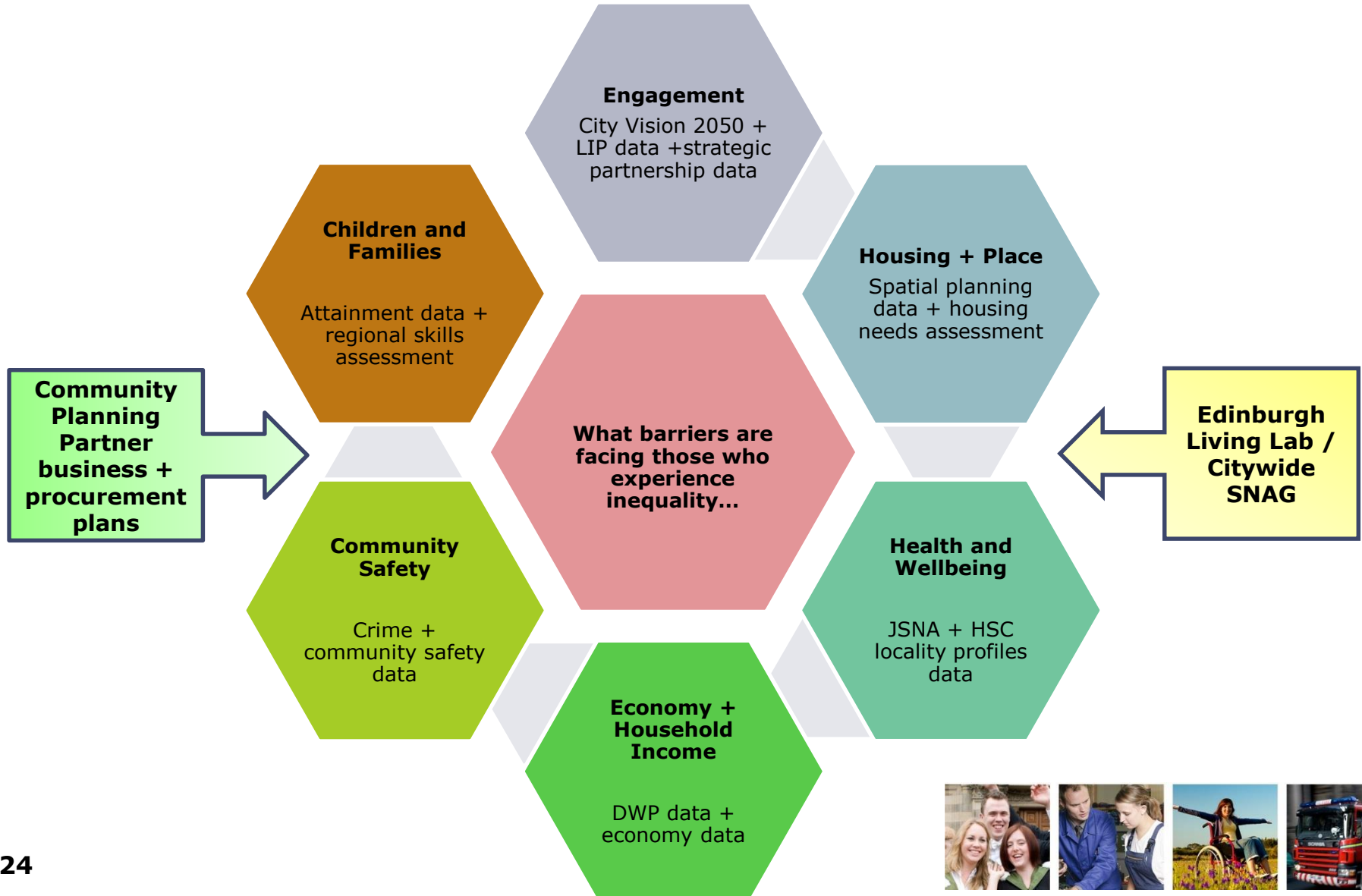
- Fairness and equity
- Sustainability
- Prevention
- Transparency
- Innovation
- Joint resourcing
- Collaboration and co-production
- Accountability



3. Strategic Needs Assessment



THE EDINBURGH PARTNERSHIP



4. Strategic Outcomes and Prevention Objectives



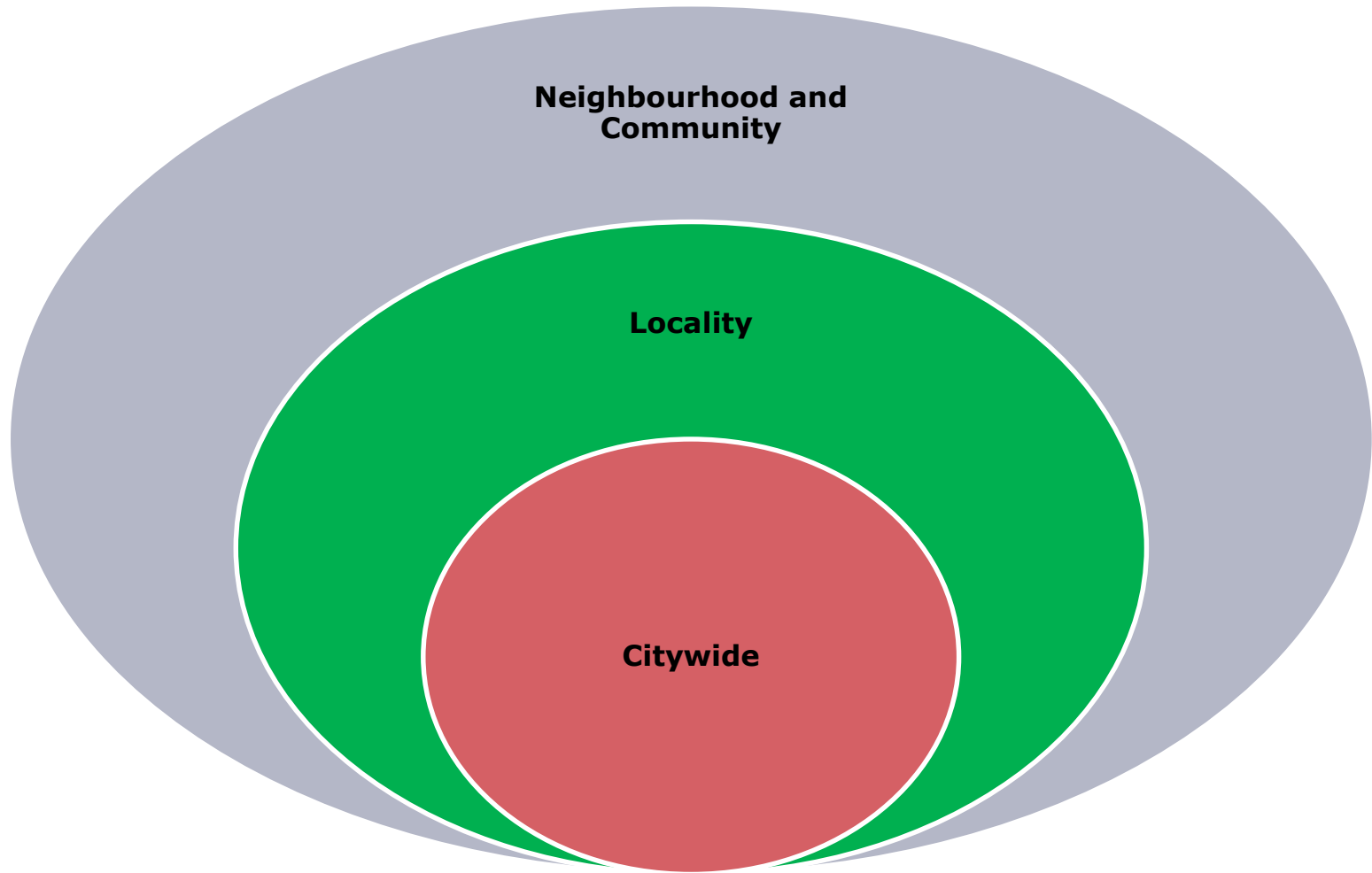
THE EDINBURGH PARTNERSHIP



5. Partnership and Governance

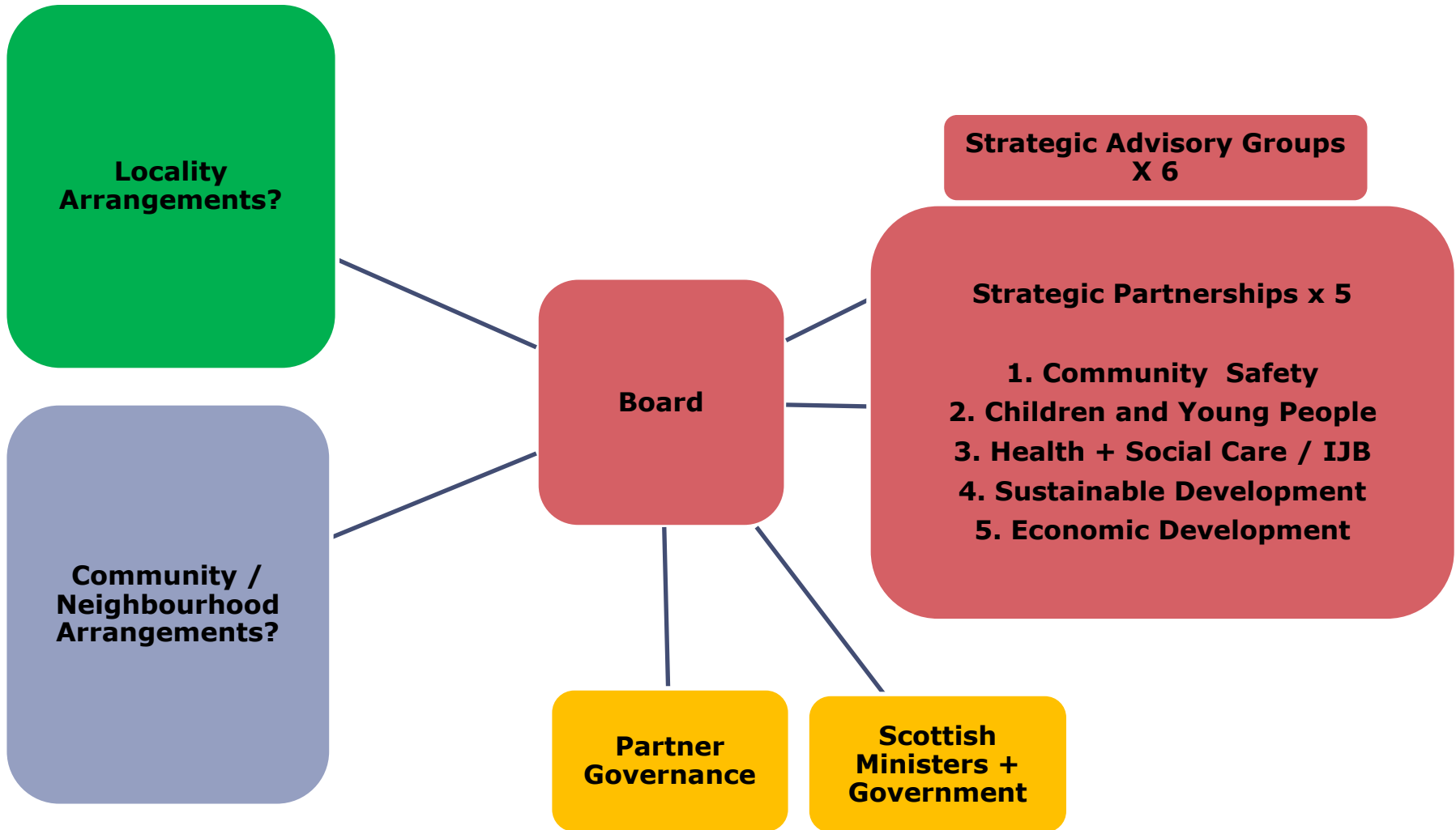


THE EDINBURGH PARTNERSHIP





THE EDINBURGH PARTNERSHIP



6. Community Participation + Empowerment



THE EDINBURGH PARTNERSHIP

For those who face inequality, the Edinburgh Partnership commit's to improving its approach to:

- participation in the Edinburgh Partnership
- national community engagement standards
- participation requests + asset transfer + right to buy
- participatory budgeting + co-production
- community development + capacity building
- access to community assets





7. Performance Reporting and Review

- Board's central role in challenge + scrutiny
- Partnership 'family's' role in delivery + performance
- People / Outcomes / Process – POP measures
- Longitudinal studies
- Compare to previous plan performance
- Annual performance report - June at the 'family gathering'
- Full review October 2022 – March 2023



Further Information:

Edinburgh Partnership Lead Officers Group

nick.croft@edinburgh.gov.uk





B O A R D M E E T I N G

Thursday 28 September 2017

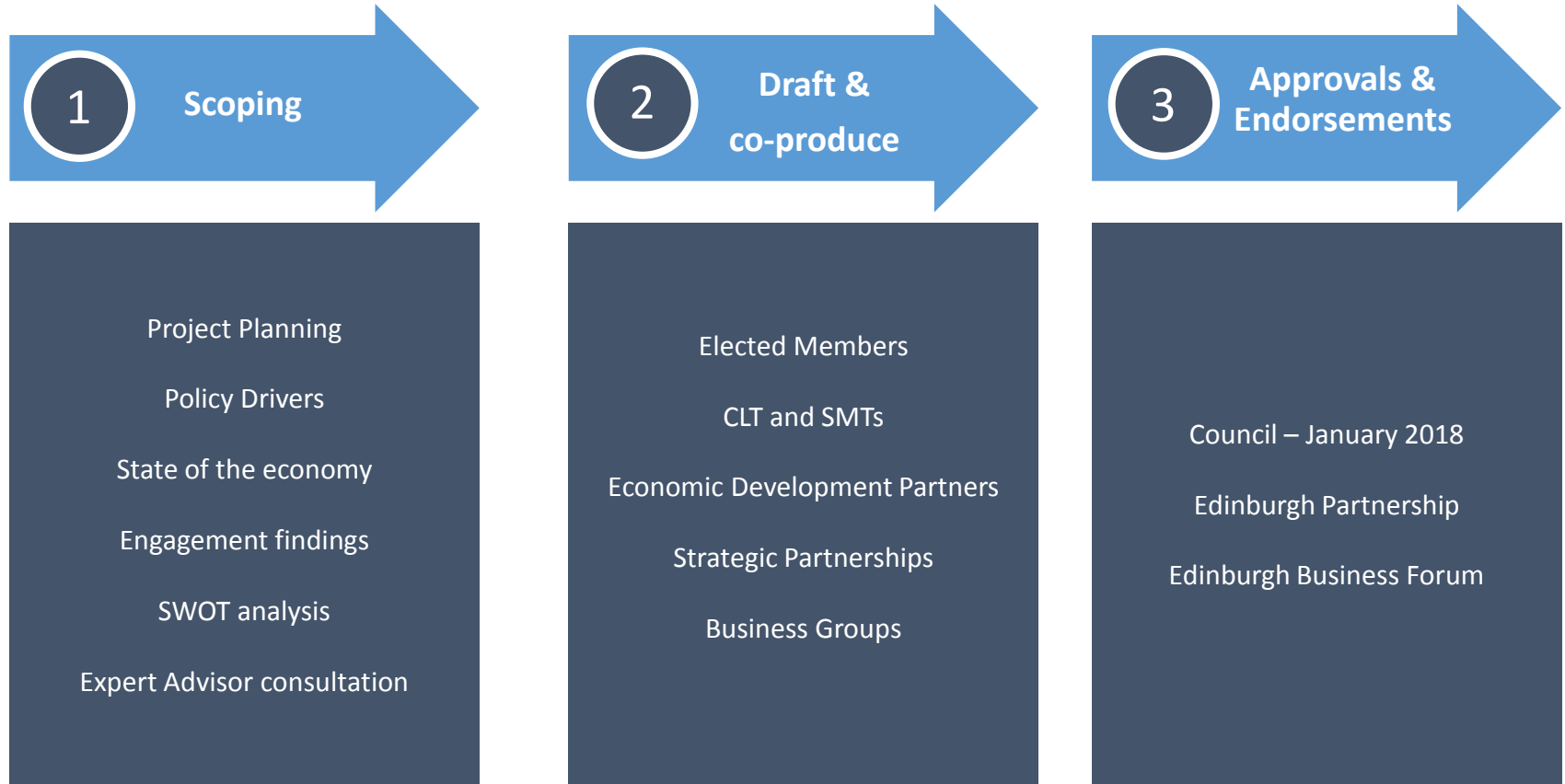
Item 5



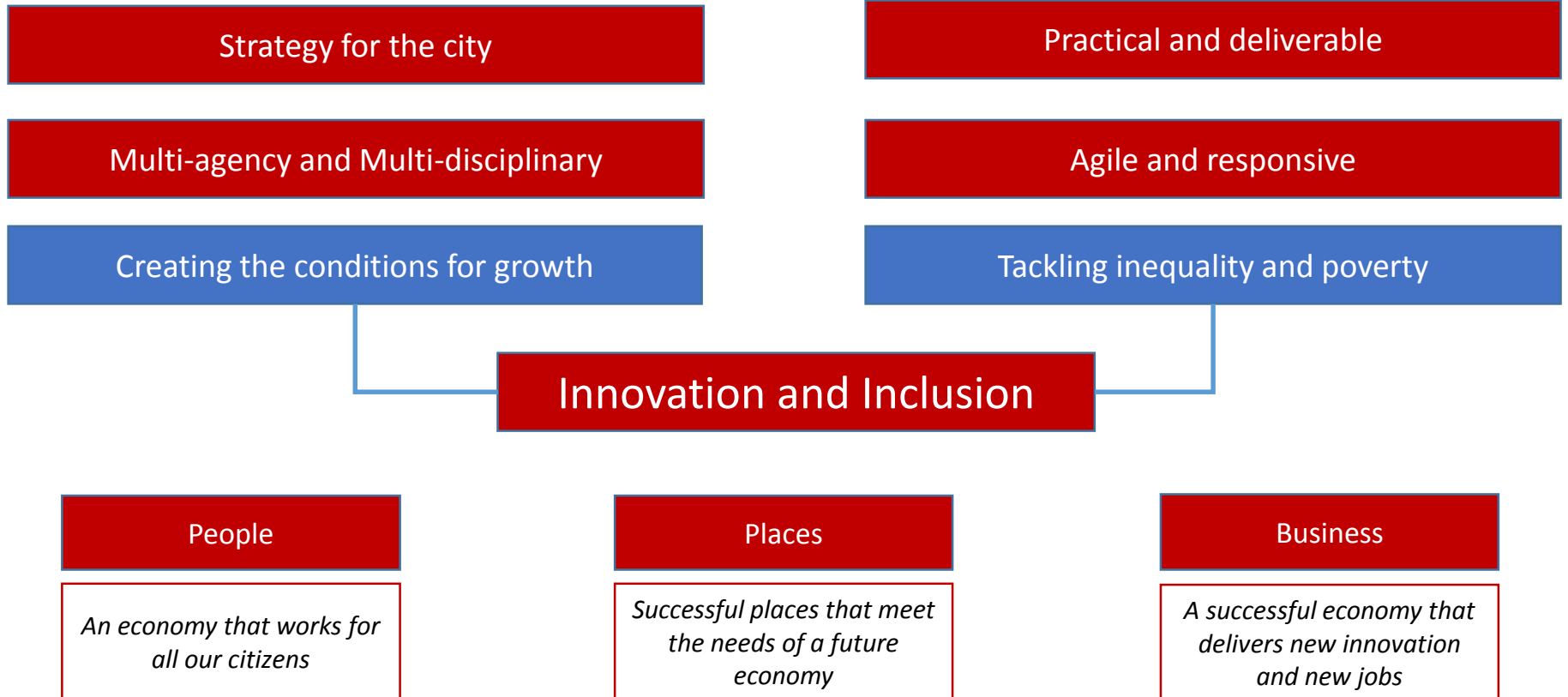
Economy Strategy

September 2017

Process



Starting principles





Contacts

Laurence.Rockey@Edinburgh.gov.uk

Head of Strategy and Insight



B O A R D M E E T I N G

Thursday 28 September 2017