

# Sustainable Edinburgh 2020 Annual Report 2014/15



THE EDINBURGH PARTNERSHIP  
SUSTAINABLE DEVELOPMENT

# Contents

- P3** Introduction
- P4** Achievements 2014-15
- P7** Challenges
- P8** Plan for 2015-16
- P10** Development of SE2020 - Timeline

# Introduction

This is the third Annual Report on the implementation of the Sustainable Edinburgh 2020 framework (SE2020).

Previous reports have reflected the increasing collaborative and cooperative work across sectors, describing the breadth of sustainable development activity across the city. The SE2020 framework, originally a Council document, has now been adopted by the Edinburgh Sustainable Development Partnership (ESDP). This and future SE2020 Annual Reports will be driven by the ESDP. This journey is outlined at the end of this report.

Having a strong and committed partnership means we can focus on major and strategic developments to maximise synergies from previously evidenced activity. This strategic outlook lies at the core of this report, defining the direction of travel over the next year.

The report will look at:

- key achievements in sustainable development over the past year;
- challenges and scope for improvement; and
- the ESDP's plan for the continuing journey in 2015–16.

The Edinburgh Partnership has agreed that by 2018 the city's Community Plan will be founded on the principles of sustainability.

**Sustainable development** is about meeting our needs in a way that doesn't prevent others from meeting their own needs, either now or in the future. This means ensuring that our decisions and actions balance impacts on economic wellbeing, social justice and environmental good stewardship.

**SE2020** is the city's strategic framework for Edinburgh's journey towards becoming a low-carbon, resource-efficient city, delivering a resilient local economy and vibrant flourishing communities in a rich natural setting. SE2020 is based around the ten 'Aalborg Commitments'.

The **ESDP** is part of the Edinburgh Partnership community planning structure which provides the city and its key stakeholders with strategic, cross-sector leadership on the sustainable development of Edinburgh.

# Achievements 2014–15

Edinburgh is becoming a more sustainable city through increased and improved collaborate working with the Edinburgh Partnership, the Edinburgh Sustainable Development Partnership (ESDP), and other partnership and joint working arrangements.

Key achievements over the past year demonstrate the consolidation of this approach.

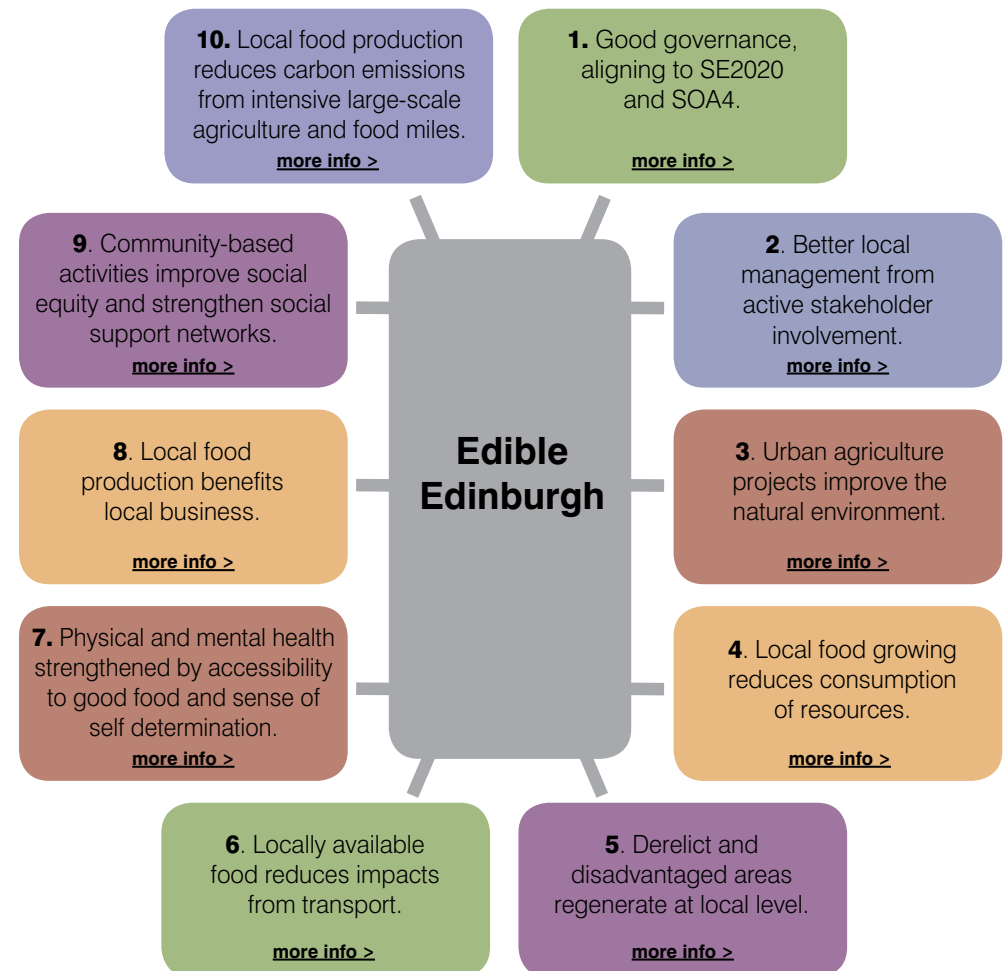
- The ESDP has adopted Resilient Edinburgh, a new climate change adaptation framework for the city.
- The Edinburgh Partnership has agreed that the next community plan will be built on all three pillars of sustainability.
- The Edinburgh Partnership has agreed to incorporate the SE2020 indicator for carbon emissions reduction in its new community plan for 2015–18.

- The Biodiversity Partnership has begun the development of a new Edinburgh biodiversity action plan for 2016. The action plan delivers a range of positive actions for biodiversity across the city.
- The Edinburgh Community Energy Hub meets regularly to share information and raise awareness about community energy projects and other strategic energy developments across the city and to develop expertise around community energy.
- The Edible Edinburgh Partnership has published Edinburgh's first ever **sustainable food city action plan**.

A summary of other major achievements of the year are shown next.

## Case study

**Edible Edinburgh** contributes to the city's sustainability under all 10 of the Aalborg Commitments.



# Achievements 2014–15



## Good governance

Membership of the [Edinburgh Sustainable Development Partnership](#) is expanding. Current priorities include: facilitating partnership work for the Sustainable Energy Action Plan (SEAP) and Resilient Edinburgh.

A Council Corporate Sustainability Group has been established to manage the Council's carbon, climate and sustainability work.

The Council's Member-Officer Group on sustainability oversees implementation of SE2020 in relation to Council Services.

The Leaders of Edinburgh and Glasgow City Councils issue a [joint statement on food poverty](#).

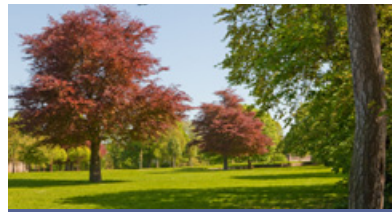


## Good management

SAM (Sustainability Adaptation Mitigation), the Council's new climate change compliance assessment e-tool is being rolled out Council wide.

The potential carbon impacts of budget decisions were taken into account for the first time when deciding the Council's revenue budget for 2015–16. Assessment of sustainability, climate change and carbon will be a standard component of all future budget proposals.

Catering service provision to all Council run city schools and the University of Edinburgh's public catering service are managed to the [Food for Life Bronze catering mark standard](#).



## Protecting and conserving the environment

The Council's [first report](#) on how it is complying with the new statutory biodiversity duty was published in December.

Edinburgh awarded gold in the [Entente Florale 2014](#) Competition.

Launch of Edinburgh's [living landscape programme plan](#). The aim is to create resilient green networks to deliver a healthy, accessible and attractive environment.

A [social return on investment](#) analysis has valued Edinburgh's 140 green spaces at £114m by measuring their social, environmental and economic impacts.



## Responsible consumption and lifestyle choices

The Council approved an [Edinburgh Homes and Energy Strategy](#) in June 2014. Progress will be monitored through a newly established Housing and Energy Forum.

The Council signed up to [RE:FIT](#) energy scheme for Council owned buildings.

An [enhanced kerbside recycling service](#) was rolled out in September 2014 to more than 140,000 homes.



## Planning and design

A City-wide consultation on [street design guidance for Edinburgh](#) has been carried out setting standards for street design supporting environmental good practice.

[Gracemount Housing](#), part of the 21st Century Homes programme, wins Excellence in Regeneration Award.

[Craigmillar Eco Housing Co-operative](#) has submitted plans for the construction of 10 Passivhaus homes.

[Edinburgh Centre for Carbon Innovation](#) wins Edinburgh architectural association building of the year award.

Queen Margaret University launches its [sustainability trail](#).

# Achievements 2014–15



## Sustainable transport

The delivery and monitoring arrangements for the implementation of the local transport strategy 2014–19 were approved.

7% of Council's transport budget spent on cycling in 2014–15.

The Council achieves a best practice award (partnership) for its plugged in places funded 'electric vehicle charging points' project.

Edinburgh is the first Scottish local authority to trial three types of onstreet bicycle storage for tenement residents - CHAMP European project.

Creative Carbon Scotland's [www.claimexpenses.com](http://www.claimexpenses.com) enables cultural agencies to track their travel related carbon emissions.



## Local action on health

Edible Edinburgh's Sustainable Food City Plan was endorsed by the Council in June 2014.

Progress made towards strategic outcomes to tackle poverty and inequality.

Approved consultation draft of Integration Scheme for adult health and social care services in Edinburgh. Revised scheme to be submitted to the Scottish Government by 31 March 2015.

Self-directed support is a new way of delivering social support in Edinburgh, helping people to live independently at home and become more involved in the community.



## Vibrant and sustainable local economy

The Low Carbon Resilience Cities Project was commissioned by the Scottish Cities Alliance and managed by the City of Edinburgh Council.

The Edinburgh Partnership agree to support a 'One City' corporate social responsibility framework.

The Edinburgh Guarantee has contributed £29m to the city's economy since it was launched three years ago.

Scotland's first Social Enterprise Festival was held in Edinburgh in September 2014.



## Inclusive and supportive communities

Edinburgh's Neighbourhood Partnership Local Community Plans for 2014–17 have been published.

Edinburgh Student Housing co operative was set up.

Stockbridge Primary is the first Edinburgh school to receive the 'Schools of Cooperation Award' from the Cooperative Education Trust for Scotland.

The Tenants' Panel was launched in October 2014 as an informal way for Council tenants to get involved in shaping the housing service.



## Local to global

Resilient Edinburgh, the first Climate Change Adaptation Framework for the city was approved by the Council and endorsed by the Edinburgh Sustainable Development Partnership.

Approval of the Sustainable Energy Action Plan (SEAP) in February 2015. The SEAP sets the strategic framework for energy projects in the city.

The University of Edinburgh awarded for its commitment to fair trade in academic work and procurement.

# Challenges

We believe that a sustainable city requires decision-makers in all organisations to take responsibility for prioritising sustainable development in the planning and delivery of all their activities.

The following key challenges have become evident over the past year.

- The importance of active participation in the ESDP of the full range of partners.
- Pursuing the energy and carbon targets in the original Sustainable Edinburgh 2020 Framework via the SEAP e.g. microgeneration.
- The necessity for all relevant partners to ensure that their respective boards, management and governance structures formally adopt sustainable development policies, initiatives etc. agreed by the parent partnership body.
- The need to integrate measures of sustainability with community planning indicators.
- The engagement of all partners in identifying, sourcing and communicating data relevant to the effective planning and monitoring of the city's sustainability.
- The commitment to examining where and how partners can lead constructive cultural change for a sustainable city within their organisation.
- The need to develop a 'shared' approach in order to pool partners' resources, skills and expertise so as to improve efficiency.
- The need to accelerate the pace of change towards sustainable development.

## Case study

### Sustainable Energy Action Plan (SEAP)

- 'wicked issue' that requires multi-agency collaboration.
- requires formal commitment.
- requires cross-sector expertise.
- requires joined up project development and sharing of good practice.
- requires agreed carbon measurement and methodology that is consistently applied, monitored and reported.

# Plan for 2015–16

## COMMUNITY PLAN

Embed SE2020 into Community Plan 2018 – 21 development.

## CARBON METRICS

ESDP to consider and progress options for development of carbon measurement and aligning this to the Sustainable Energy Action Plan.

## ESDP WORK PROGRAMME

ESDP to develop work programme detailing actions for 2015 –16 and outlining key milestones for 2016 – 2018.

## ADAPTATION ACTION PLAN

ESDP will take a coordinating role, with member partners developing actions to populate the plan and ensuring responsibility for taking them forward.

## INTERNAL ENGAGEMENT ON CULTURE CHANGE

All ESDP partners will work with their respective organisational governance structures to achieve internal culture change for sustainability.

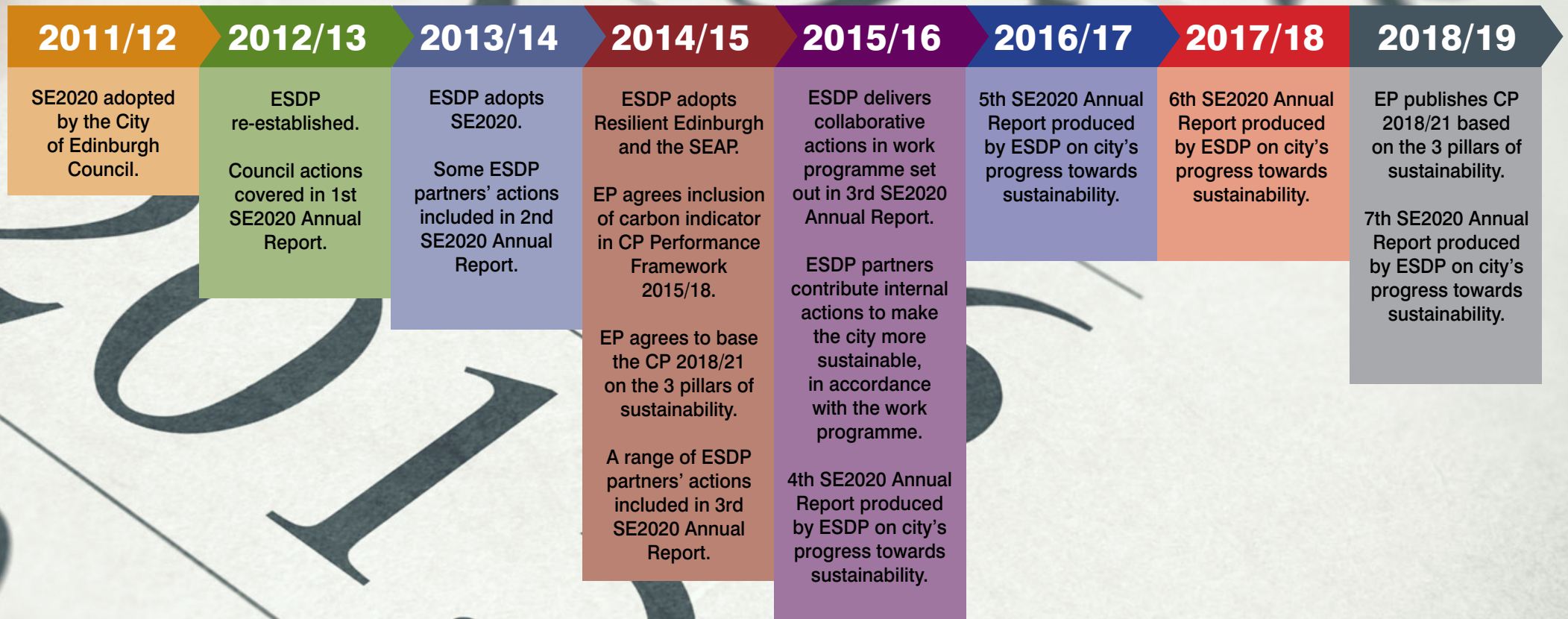
## CITY-WIDE ENGAGEMENT

ESDP will deliver two major events for key city decision-makers on the 'wicked issues' for sustainable development.



SE2020 ACTION	TASK	TIMESCALE	LEAD
<b>ESDP WORK PROGRAMME</b>	Plan and agree programme to deliver SE2020 actions in 2015-16.	25 March 2015	ESDP
	Set up sub-groups as appropriate to deliver on the actions.	As required	
	Evaluate progress and outline actions for 2016 onwards.	By April 2016	
<b>CARBON METRICS</b>	Define specific actions and SMART targets for reducing Edinburgh's greenhouse gas emissions.	By Sept 2015	ESDP sub group
	Resolve challenges such as defining Edinburgh's carbon metrics structure and parameters, sharing workload responsibilities, clarifying data variables, avoiding duplication and ensuring alignment with SEAP, involving stakeholders and agreeing practical arrangements for progressing SE2020.		
	Establish GHG measurement boundaries.	By April 2016	ESDP sub group
	Evaluate progress and outline actions for 2016 onwards.		ESDP
<b>ADAPTATION ACTION PLAN</b>	Coordinate partners' contributions to the plan.	By April 2016	Adaptation task group
	Develop actions to populate the plan.		
	Commit to implementing actions.		
	Ensure delivery of partners actions.		
	Evaluate progress and outline actions for 2016 onwards		
<b>ENGAGEMENT</b>	Organise initial event to share ESDP partners' expertise on behaviour change good practice.	By June 2015	Adaptation task group
	ESDP member partners to work with their respective organisational governance structures to establish mechanisms to support internal culture change for sustainability.	By Dec 2015	
	ESDP member partners to work with their respective communications staff to promote internal culture change for sustainability.	By Dec 2015	
	Share experience, good practice and useful engagement materials.	By April 2016	
	Evaluate progress and outline actions for 2016 onwards.		
	Deliver one major event for key city decision-makers on sustainable development 'wicked issues'.	By Sept 2015	
	Deliver one major event for key city decision-makers on sustainable development 'wicked issues'.		
	Evaluate progress and outline actions for 2016 onwards.		
	Collaborate with Community Plan Secretariat and Edinburgh Partnership Board to embed the principles of sustainability in the 2018-2021 Community Plan.	By April 2016	
	Evaluate progress and outline actions for 2016 onwards.		

# Development of SE2020 – Timeline



If you would like more information, please contact:

Corporate Policy and Strategy Team  
The City of Edinburgh Council  
Waverley Court  
4 East Market Street  
Edinburgh EH8 8BG  
E-mail: [dg.sustainability@edinburgh.gov.uk](mailto:dg.sustainability@edinburgh.gov.uk)



You can get this document on tape, in Braille, large print and various computer formats if you ask us. Please contact the Interpretation and Translation Service (ITS) on 0131 242 8181 and quote reference number 15-0023. The ITS can also give information on community language translations.