

NOTES

All dimensions in millimetres.

Chamber base to be cast insitu in mix ST4 concrete with a smooth finish, to Class U3.

Walls to be HD type Class B clay engineering brick, to BS.EN.771-1:2003, 103mm. thick.

All mortar to be designation (i).

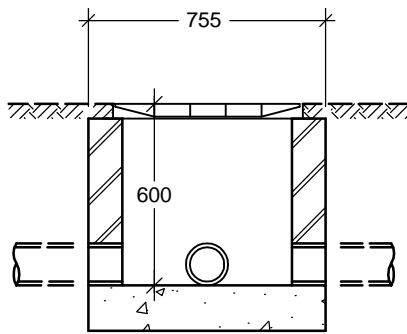
Ducts to be built into the chamber walls.

Duct layout and depths may vary from that shown.

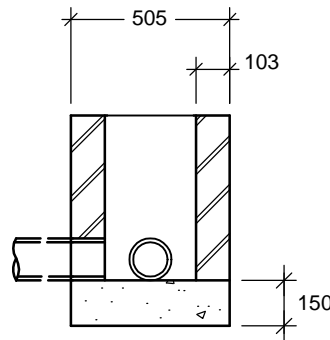
For all pipes, the nearest joint shall form part of an articulated section and be not more than 500mm from the inner face of the wall.

Chamber cover and frame complying with BS.EN.124:1994 to be Class B125, 550 x 325mm clear opening.

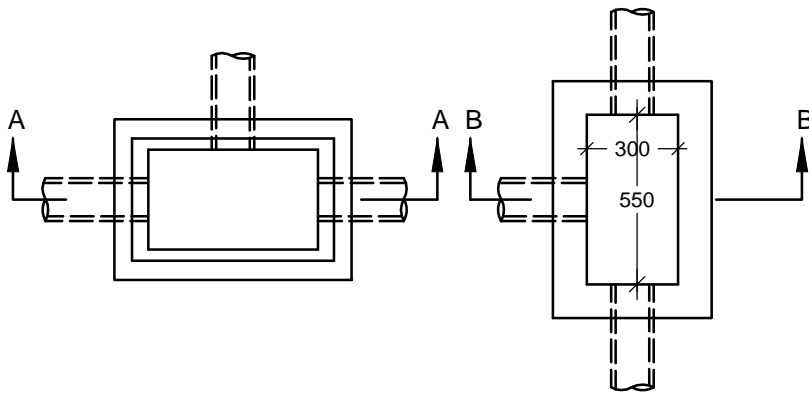
This chamber is to be used only in footpaths, verges, traffic islands or pedestrian refuges. It is not to be used in situations accessible to regular vehicular loadings.



SECTIONAL ELEVATION AA



SECTIONAL ELEVATION BB



PLAN

PLAN