

# NOTES

All dimensions in millimetres.

All pipes shall comply with the relevant British Standard.

75mm depth mix ST1 blinding concrete to be provided under base.

Headwall to be cast insitu in class C30/37 concrete with 20mm aggregate.

All exposed edges shall have a 25mm chamfer.

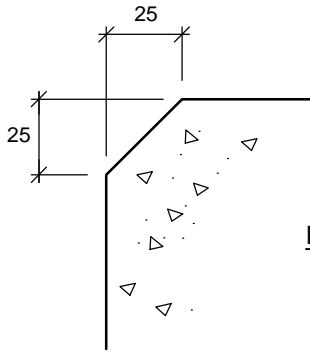
All finishes shall be smooth to class F3 or U3.

Grille to be fabricated of mild steel to BS.EN.10025-3:2004.

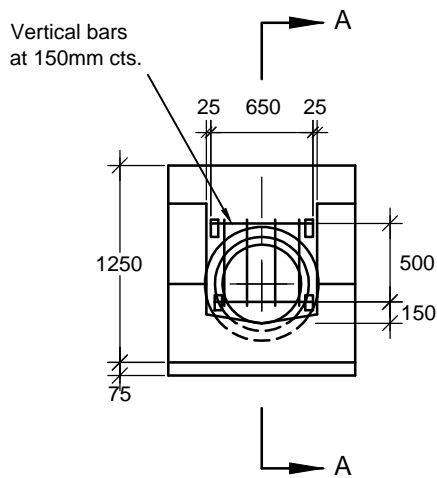
All welds to be 8mm throat thickness.

Grille shall be blast cleaned, then given a protective treatment of a primer, undercoat and finishing coat of black bituminous paint, including the surfaces in contact with concrete.

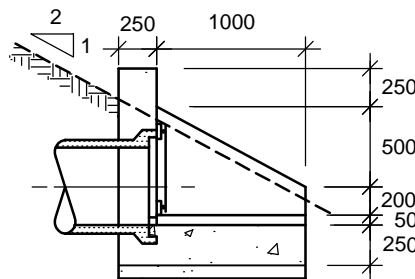
Grille to be mounted on 4 no. 15mm dia. rag bolts, or fixed as approved by the Project Manager.



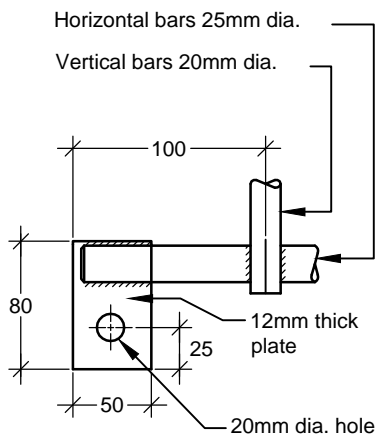
**DETAIL OF  
EDGE CHAMFER**



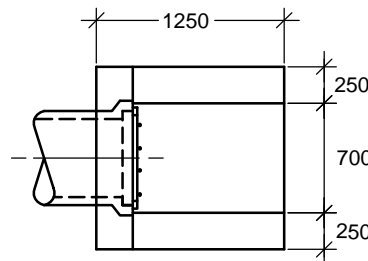
**ELEVATION**



**SECTIONAL ELEVATION AA**



**DETAIL OF GRILLE FIXING**



**PLAN**