



## City of Edinburgh Leisure Development Schedule 2018

# Contents

Graph - leisure developments in Edinburgh 2018

Graph - historic trends

Summary of leisure developments as at 31 December 2018

Table 1 - Schedule of developments completed in 2018

Table 2 - Schedule of developments under construction at year end 2018

Table 3 - Schedule of developments that gained planning consent in 2018

Table 3a - Schedule of other developments with planning consent at year end 2018

Table 4 - Schedule of developments awaiting planning determination at year end 2018

Table 5 - Schedule of closures occurring in 2018

Map of report boundaries

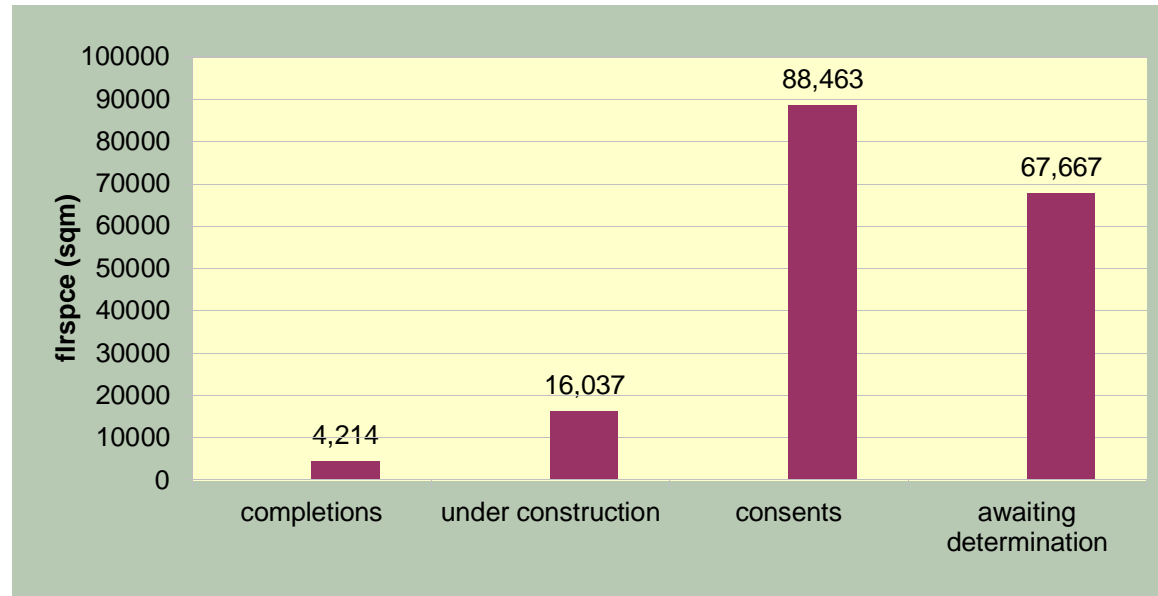
*cover photo: Lift Gym, Gorgie Road*

*Whilst reasonable efforts have been made to verify the information in this report, the City of Edinburgh Council are unable to provide an assurance as to the accuracy, currency or comprehensiveness of tables and commentary. Users should undertake their own checks before using the data in this report as an input to policy or investment decisions.*

*This schedule has been prepared by Planning, City of Edinburgh Council.*

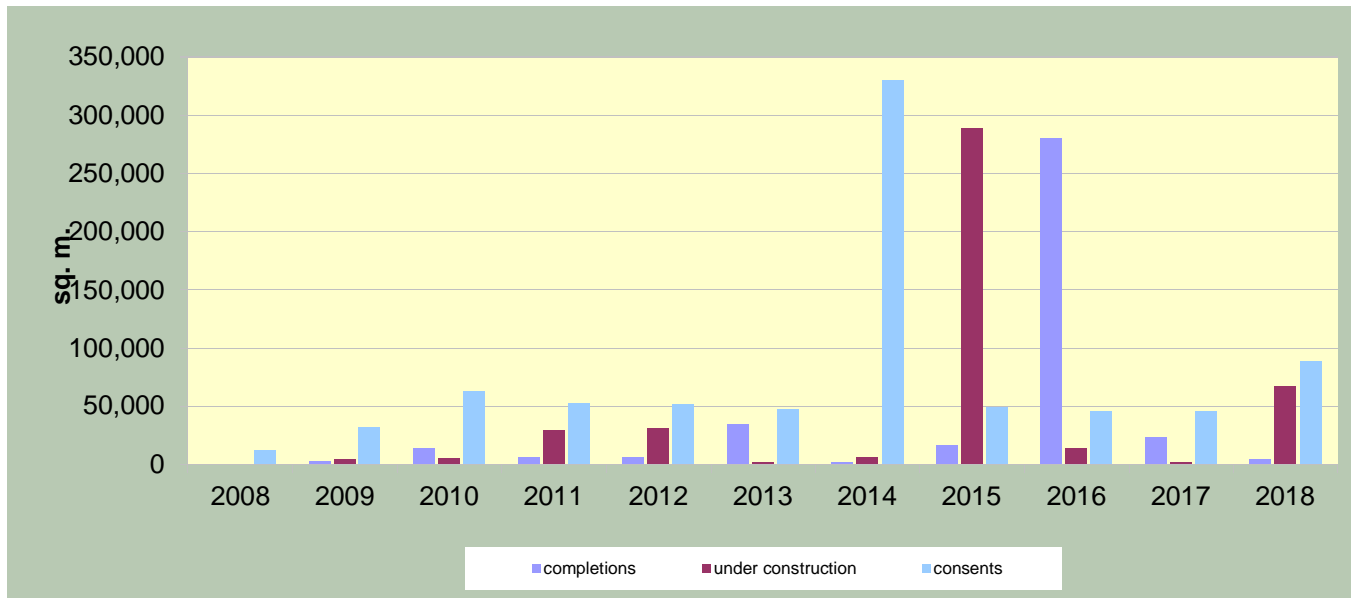
*Contact: Simon Antrobus (simon.antrobus@edinburgh.gov.uk, 0131-469-3597)*

## Leisure developments in Edinburgh 2018



## HISTORIC TRENDS : DEVELOPMENT PIPELINE

	2008	2009	2010	2011	2012	2013	2014	2015	2016	2017	2018
completions	0	3,094	13,490	6,782	6,286	34,599	2,121	16,611	280,632	23,630	4,214
under construction	0	4,050	5,373	29,272	30,800	2,347	5,793	289,185	13,553	2,103	67,667
consents	11,998	31,923	62,926	52,532	51,897	48,036	330,420	48,718	45,719	46,168	88,463



## Summary of leisure developments by area as at 31 December 2018

1) UNDER CONSTRUCTION					2) PLANNING PERMISSION				
Strategic Development Areas	new build	change of use	refurb.	TOTAL	new build	change of use	refurb.	extension	TOTAL
City Centre	5,191	0	0	5,191	n/a	0	0	0	0
South East	0	0	0	0	0	0	0	0	0
Waterfront	0	0	0	0	10,130	0	0	0	10,130
West Edinburgh	0	0	0	0	0	0	0	0	0
<b>Outwith Core Areas</b>	<b>9,615</b>	<b>1,231</b>	<b>0</b>	<b>10,846</b>	<b>61,818</b>	<b>3,515</b>	<b>0</b>	<b>13,000</b>	<b>78,333</b>
<b>TOTAL</b>	<b>14,806</b>	<b>1,231</b>	<b>0</b>	<b>16,037</b>	<b>71,948</b>	<b>3,515</b>	<b>0</b>	<b>13,000</b>	<b>88,463</b>

3) COMPLETED FLOORSPACE					4) AWAITING DETERMINATION			
Strategic Development Areas	new build	change of use	refurb.	TOTAL	new build	change of use	refurb.	TOTAL
City Centre	0	0	0	0	11,347	0	0	11,347
South East	0	0	0	0	0	0	0	0
Waterfront	0	2,800	0	2,800	9,320	0	0	9,320
West Edinburgh	0	0	0	0	0	0	0	0
<b>Outwith Core Areas</b>	<b>666</b>	<b>748</b>	<b>0</b>	<b>1,414</b>	<b>47,000</b>	<b>0</b>	<b>0</b>	<b>47,000</b>
<b>TOTAL</b>	<b>666</b>	<b>3,548</b>	<b>0</b>	<b>4,214</b>	<b>67,667</b>	<b>0</b>	<b>0</b>	<b>67,667</b>

*all floorspaces are square metres gross*

**Table 1: Leisure developments completed between 1 January 2018 and 31 December 2018**

APPLIC. NO	ADDRESS	APPLICANT	DATE OF CONSENT	DEVELOPMENT TYPE	WARD	FLOOR SPACE (SQM)	NOTES
<b>CITY CENTRE TOTAL</b>						0	
<b>SOUTH EAST TOTAL</b>						0	
<a href="#">17/01081/FUL</a>	Ocean Drive, 98, Unit 2 [Ocean Terminal]	Ocean Terminal Ltd.	May-17	c/u	13	2,800	wheeled indoor sports facility
<b>WATERFRONT TOTAL</b>						2800	
<b>WEST TOTAL</b>						0	
<a href="#">17/01399/FUL</a>	Barnbogle Castle, Dalmeny Estate	Rosebery Estates Partnership	Jun-17	c/u	1	n/a	c/u residential>events
<a href="#">17/00637/FUL</a>	Gorgie Road, 545-551	Lift Gyms Ltd.	Apr-17	c/u	7	748	c/u to gym
18/00656/FUL	Peffermill Road, 40 (Peffermill Playing Fields)	The University Of Edinburgh	Apr-18	new build	15	666	5-a-side 3G synthetic pitch
<b>OTHER TOTAL</b>						1,414	
<b>Total floor space</b>						<b>4,214</b>	
<b>No. of sites</b>						<b>4</b>	

**Table 2: Leisure developments under construction between 1 January 2017 and 31 December 2018**

APPLIC. NO	ADDRESS	APPLICANT	DATE OF CONSENT	DEVELOPMENT TYPE	WARD	FLOOR SPACE (SQM)	NOTES
<a href="#">10/02373/FUL</a>	Morrison Street, 189	Tiger Haymarket Developments Ltd	Mar-11	new	11	1,453	part of larger development
<a href="#">13/03407/FUL</a>	New Street, 2, 4, 5, Canongate, 221, 223, 227, 231	Artisan REI	Mar-14	new	11	n/a	5,623 sqm class 1, 2, 3, 4, 7, 8, 10 & 11 - part of larger development
<a href="#">13/03406/FUL</a>	New Street [land adjacent to]	Artisan REI	Mar-14	new	11	n/a	2,049 sqm class 1, 2, 3, 4, 7, 8, 10 & 11 - part of larger development
16/02791/AMC	St. James Centre	Henderson Global Investors	Sep-16	new	11	3,738	cinema
<b>CITY CENTRE TOTAL</b>						<b>5,191</b>	
<b>SOUTH EAST TOTAL</b>						<b>0</b>	
<b>WATERFRONT TOTAL</b>						<b>0</b>	
<b>WEST TOTAL</b>						<b>0</b>	
<a href="#">17/00422/FUL</a>	Gorgie Road, 500	Spindlehawk Ltd.	Aug-17	c/u	7	581	mixed use resid. & comm.
<a href="#">16/02242/FUL</a>	Shrub Place, 7	Places for People (Shrubhill) Ltd.	Jul-16	c/u	12	650	c/u retail to gym
<a href="#">12/03567/FUL</a>	Portgower Place, 11a	Raeburn Place Development Ltd.	Jul-14	new	5	7,893	Stadium, hospitality, office, museum, retail
<a href="#">17/04606/FUL</a>	Swanston Road, 111 [Swanston Golf Club]	Swanston Golf Ltd.	Nov-17	new	1	1,722	driving bays and golf academy
<b>OTHER TOTAL</b>						<b>10,846</b>	
<b>Total floor space</b>						<b>16,037</b>	
<b>No. of sites</b>						<b>8</b>	

\*1 Proposed commercial floorspace for the two applications includes various uses as stipulated on the associated use class plans. Depending on the unit these could include class 1: retail; class 2: financial / professional services; class 3: food and drink; class 4: office; class 7: hotel; class 8: residential institutions; class 10: non-residential institutions; and class 11: assembly and leisure

**Table 3a: Leisure developments with planning consent as at 31 December 2018 - Consent gained during 2018**

APPLIC. NO	ADDRESS	APPLICANT	DATE OF CONSENT	CONSENT EXPIRES	DEVELOPMENT TYPE	WARD	FLOOR SPACE (SQM)	NOTES
<b>CITY CENTRE TOTAL</b>							0	
<b>SOUTH EAST TOTAL</b>							0	
<b>WATERFRONT TOTAL</b>							0	
18/02395/FUL	Ingliston Road (MacRobert Pavillion)	Royal H'land & Agri Society Of Scotland	Sep-18	Sep-21	new build	1	1,180	multi use event building
<b>WEST TOTAL</b>							1,180	
18/01813/FUL	Clifton Road, Newbridge (Linwater Caravan Park)	Linwater Caravan Park	Nov-18	Nov-21	extension	2	13,000	additional 33 static pitches
<a href="#">17/04223/FUL</a>	Foxhall, Kirkliston	Conifox Nurseries	Jun-18	Jun-21	new	1	n/a	Extend existing adventure park
<a href="#">16/03107/FUL</a>	Jack Kane Community Centre	Reiach & Hall Architects	Oct-18	n/a	new & refurb.	17	18,000	bike tracks, 3g pitches, centre refurb.
18/00181/FUL	London Road, 139 (Meadowbank Sports Centre)	City Of Edinburgh Council	Dec-18	Dec-21	redevelopment	14	16,527	new build sports centre
18/04172/FUL	Nicolson Street, 50	JD Wetherspoon PLC	Nov-18	Nov-21	change of use	15	496	former bingo hall --> public house
18/02489/FUL	Roseburn Street, 102A (Murrayfield Stadium)	Scottish Rugby Union Ltd	Sep-18	Sep-21	redevelopment	6	19,495	stands and 3G synthetic pitch
<a href="#">17/05010/FUL</a>	Swanston Road, 106 [Swanston Farm]	Mr. A. McClung	Apr-18	Apr-21	change of use	1	540	indoor golf and sports facility
18/02387/FUL	Westfield Road, 24	MGA Academy	Oct-18	Oct-21	change of use	7	1,370	dance academy
<b>OTHER TOTAL</b>							69,428	
<b>Total floor space</b>							<b>70,608</b>	
<b>No. of sites</b>							<b>9</b>	



**Table 3b: Leisure developments with planning consent as at 31 December 2018 - Consent gained prior to 2018**

APPLIC. NO	ADDRESS	APPLICANT	DATE OF CONSENT		DEVELOPMENT TYPE	WARD	FLOOR SPACE (SQM)	NOTES
			CONSENT	EXPIRES				
<a href="#">10/02955/PPP</a>	Gilmore Park, Fountain Brewery	LTSB (Fountainbridge1) Ltd	Sep-11	never	new	7	n/a	9,290 sqm class 1, 2, 3 & 11 - part of larger development
<b>CITY CENTRE TOTAL</b>							0	
<b>SOUTH EAST TOTAL</b>							0	
<a href="#">14/05305/AMC</a>	West Harbour Road, 65	Granton Central Developments Ltd.	Aug-16	Aug-19	new	4	4,225	
<a href="#">16/01273/AMC</a>	West Harbour Road, 62	Granton Central Developments Ltd.	Aug-16	Aug-19	new	4	4,725	
<b>WATERFRONT TOTAL</b>							8,950	
<b>WEST TOTAL</b>							0	
<a href="#">17/01657/FUL</a>	Carlownie Castle, Boathouse Bridge Road	Mr. A. Marshall	Nov-17	Nov-20	new	1	n/a	15 timber cabins
<a href="#">11/01492/PPP</a>	Cramond Road North [land adjacent to 34]	AMA (New Town) Ltd	* legal	n/a	new	1	3,040‡	sports facilities - cricket & football
<a href="#">11/01493/PPP</a>	Cramond Road North [land adjacent to 34]	AMA (New Town) Ltd	* legal	n/a	new	1	6,911‡	sports facilities - tennis & football
<a href="#">11/01494/PPP</a>	Cramond Road North [land adjacent to 34]	AMA (New Town) Ltd	* legal	n/a	new	1	7,796	sports facilities - tennis & cricket
<a href="#">17/04669/FUL</a>	Gorgie Road, 454, Unit 2	The Hutts	Dec-17	Dec-20	change of use	7	1,109	gymnastics centre
<b>OTHER TOTAL</b>							8,905	
					<b>Total floor space</b>		<b>17,855</b>	
					<b>No. of sites</b>		<b>8</b>	

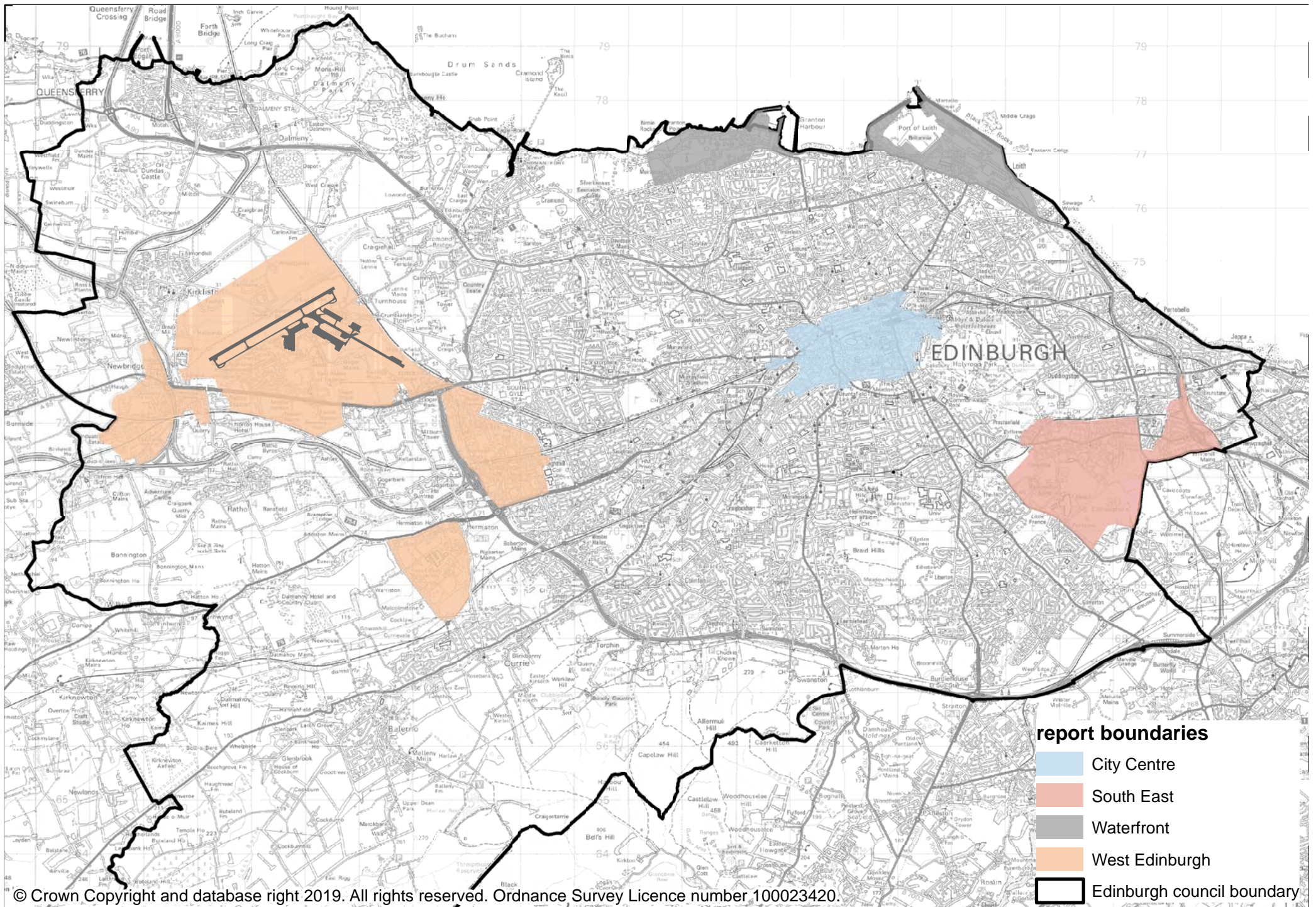
\* consent subject to legal agreement  
‡ duplicate applications - not included in total

**Table 4: Leisure developments awaiting determination between 1 January 2018 and 31 December 2018**

APPLIC. NO	ADDRESS	APPLICANT	DATE OF APPLICATION	DEVELOPMENT TYPE	WARD	FLOOR SPACE (SQM)	NOTES
18/04657/FUL	St Andrew Square, 35-36	IMPACT Scotland	Aug-18	new build	11	11,347	music and performing arts venue
<b>CITY CENTRE TOTAL</b>						11347	
<b>SOUTH EAST TOTAL</b>						0	
18/02833/AMC	West Harbour Road (Granton Harbour)	Granton Development Ltd	Jun-18	redevelopment	4	9,320	343 berth marina, boat yard, café
<b>WATERFRONT TOTAL</b>						9,320	
<b>WEST TOTAL</b>						0	
17/02471/FUL	Craigpark, 1, Ratho	Tartan Leisure Ltd.	May-17	new	1	47,000	Lesiure complex incl. watersports
<b>OTHER TOTAL</b>						47,000	
						<b>Total floor space</b>	<b>67,667</b>
						<b>No. of sites</b>	<b>3</b>

**Table 5: Leisure closures between 1 January 2018 and 31 December 2018**

APPLIC. NO	ADDRESS	APPLICANT	DATE OF CONSENT	DEVELOPMENT TYPE	NEW USE	WARD	FLOOR SPACE (SQM)	NOTES
<b>CITY CENTRE TOTAL</b>							0	
<b>SOUTH EAST TOTAL</b>							0	
<b>WATERFRONT TOTAL</b>							0	
<b>WEST TOTAL</b>							0	
<b>OTHER TOTAL</b>							0	
							<b>Total floor space</b>	<b>0</b>
							<b>No. of sites</b>	<b>0</b>



- report boundaries**
- City Centre
  - South East
  - Waterfront
  - West Edinburgh
  - Edinburgh council boundary