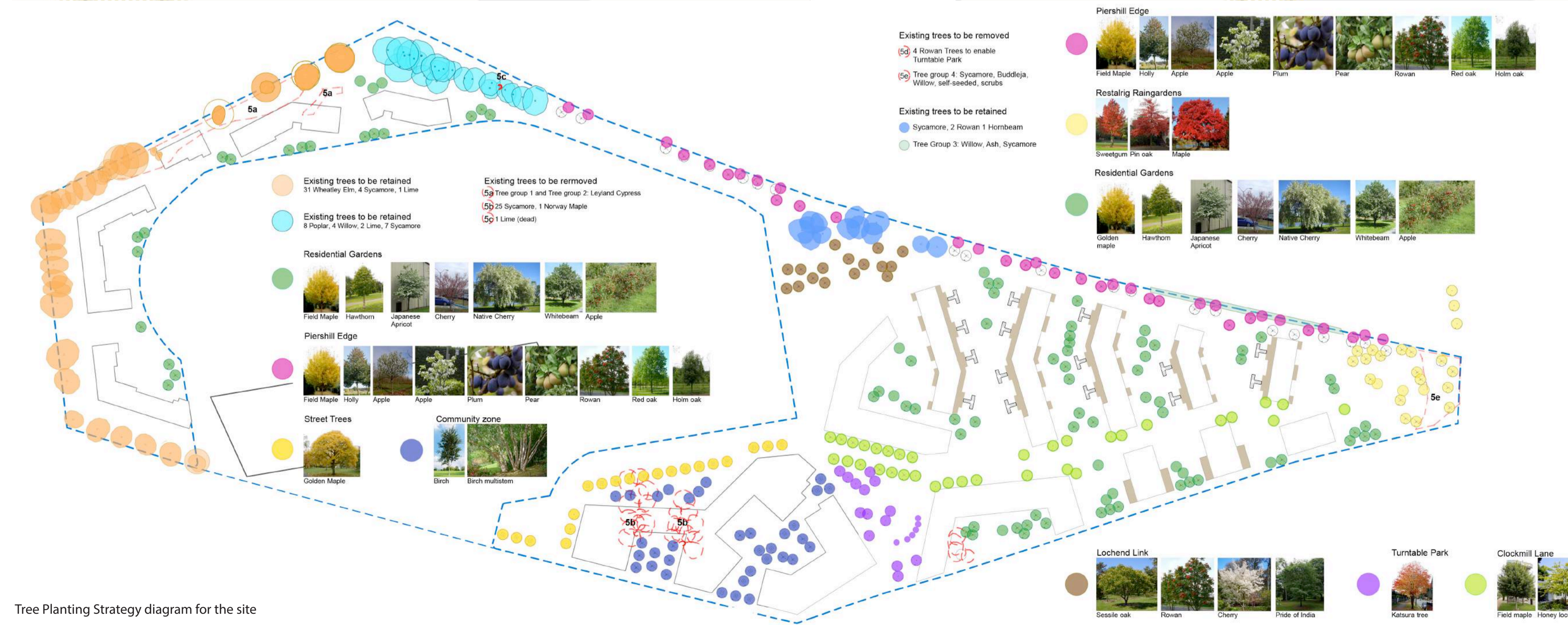
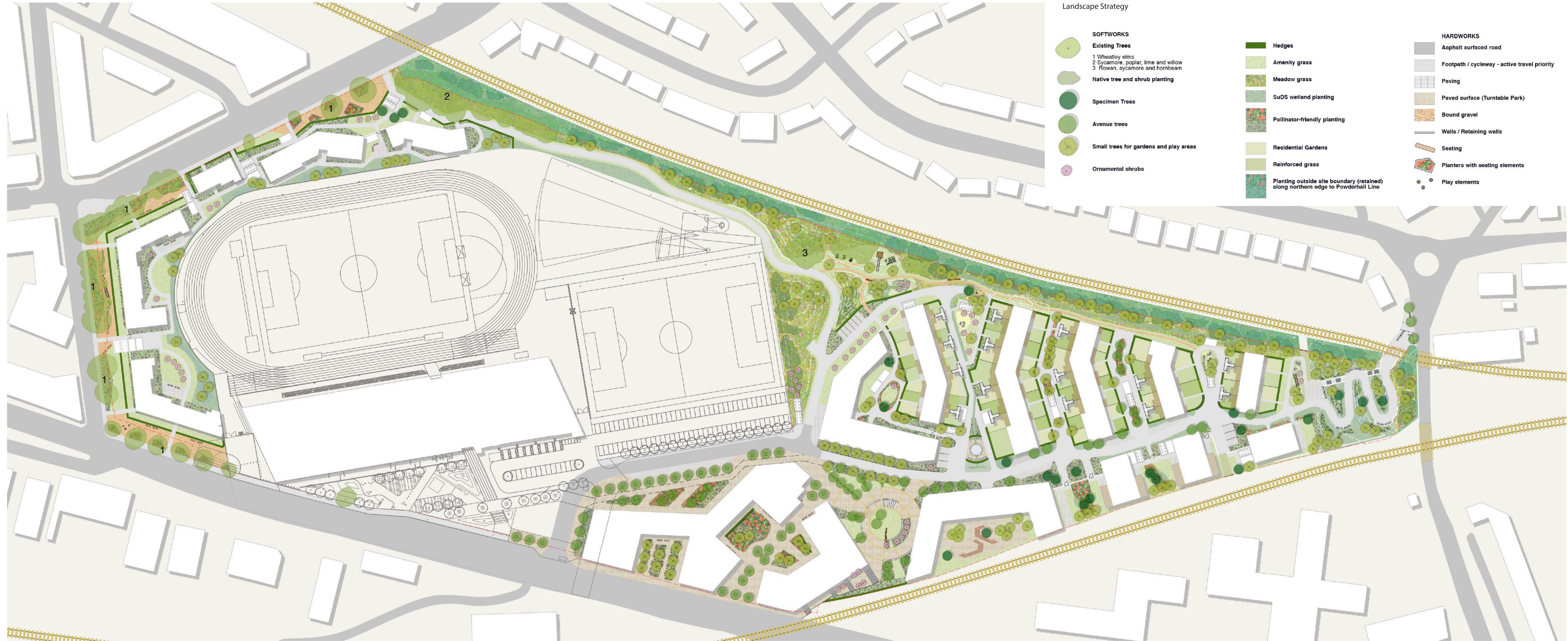


02 MEADOWBANK Landscape Proposals

The Next Steps



Tree Planting Strategy diagram for the site

Landscape strategy

As a first principle we are looking to retain as much of the existing trees and vegetation around the site.

Key landscape elements:

- Urban Parklet around and beneath the Wheatley Elms
- Retention & enhancement of planting along Piershill railway edge as a wildlife corridor
- Active travel links to Lochend Park, Holyrood Park and Restalrig
- People friendly streets with lush planting, informal play, edible plants & rain gardens
- Turntable park & London street frontage more formal landscape character

Planting Strategy

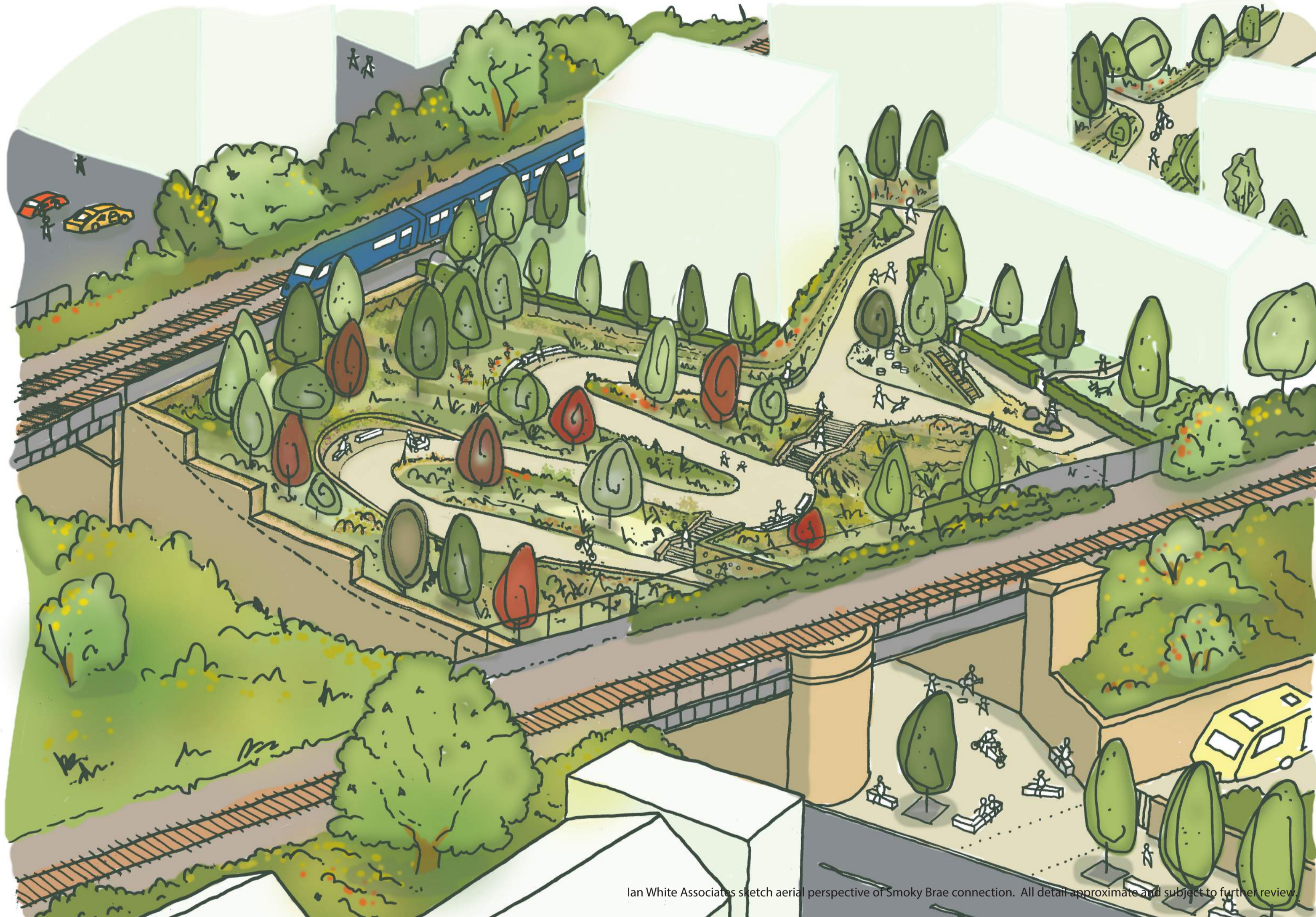
A rich palette of planting will emphasise the character of the spaces within different areas of the site.

Native and non-native species will provide ecological diversity and structural diversity through trees, shrubs, herbaceous and ground flora.

A strong theme developing for pollinator-friendly planting to support bees, rare butterfly populations and to positively contribute to the city's urban ecology network.

03 MEADOWBANK Restalrig/Green Infrastructure

The Next Steps



Ian White Associates sketch aerial perspective of Smoky Brae connection. All detail approximate and subject to further review.

Green Infrastructure (aspiration for Building with Nature accreditation)

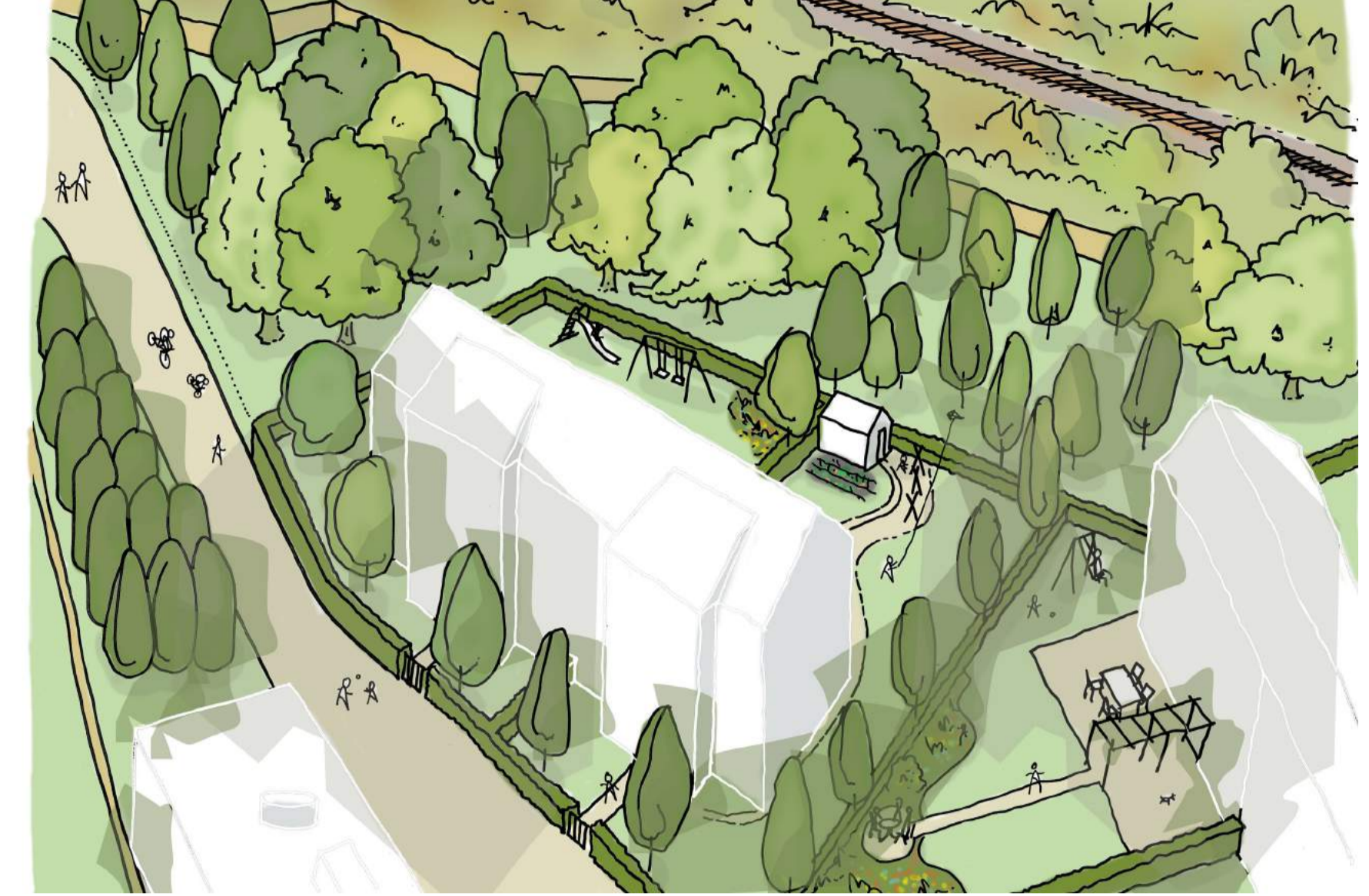


The team is in touch with the Scottish Government's Green Infrastructure team to discuss ecology and biodiversity opportunities within the site. As part of this, the possibility of Building for Nature accreditation is being explored.

Building with Nature is a new benchmark accreditation for the highest quality of design and maintenance of green infrastructure in housing and commercial development. Core standards focus on Wildlife, Water and Wellbeing. There are two stages of accreditation: design stage and completion. The two levels of award are 'Good' or 'Excellent'. The accreditation could be a really positive achievement for Meadowbank.

Play Strategy

Play areas are dispersed through the site and focus on integrating natural play elements into landscape spaces, including the Wheatley elm parklet. Equipment will be designed for multi-generational use, and to fit seamlessly with topography and planting proposals.

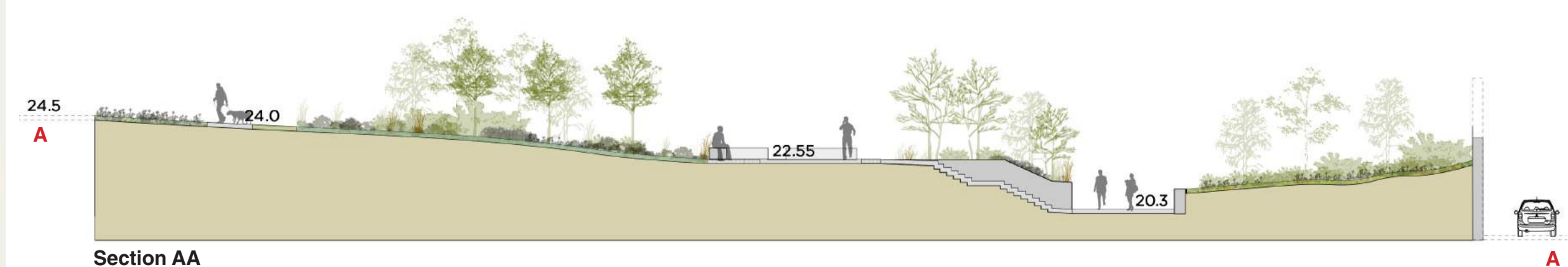
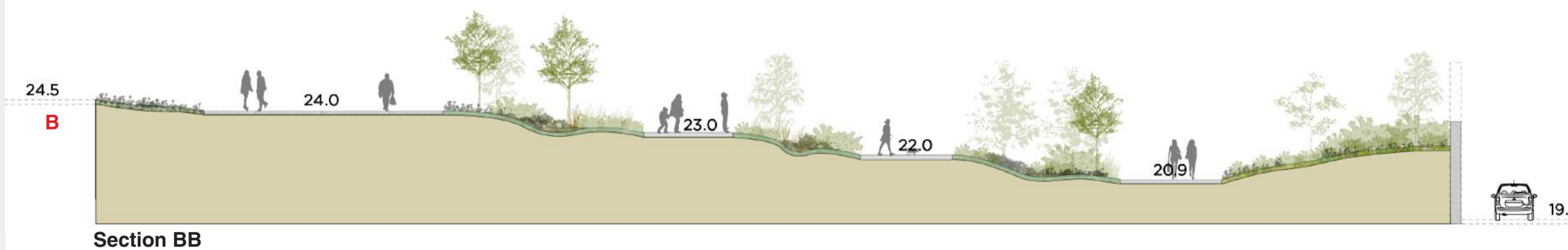
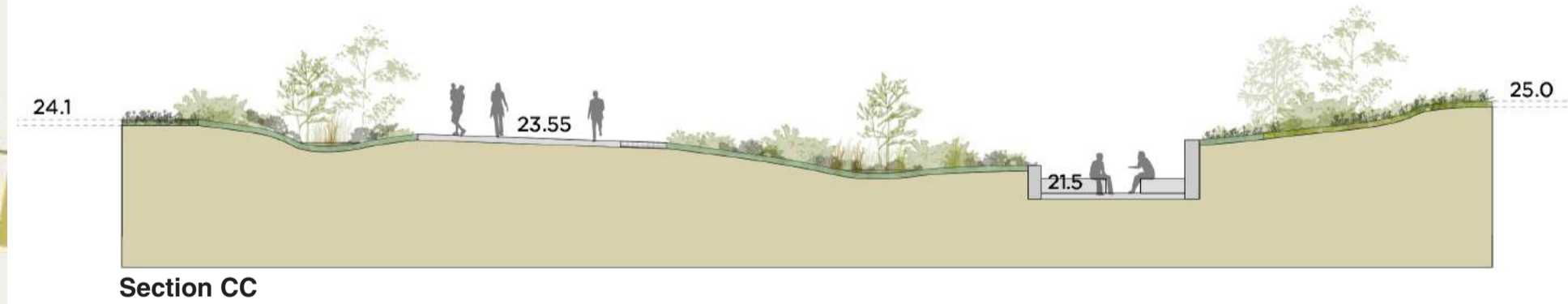


Rain Gardens

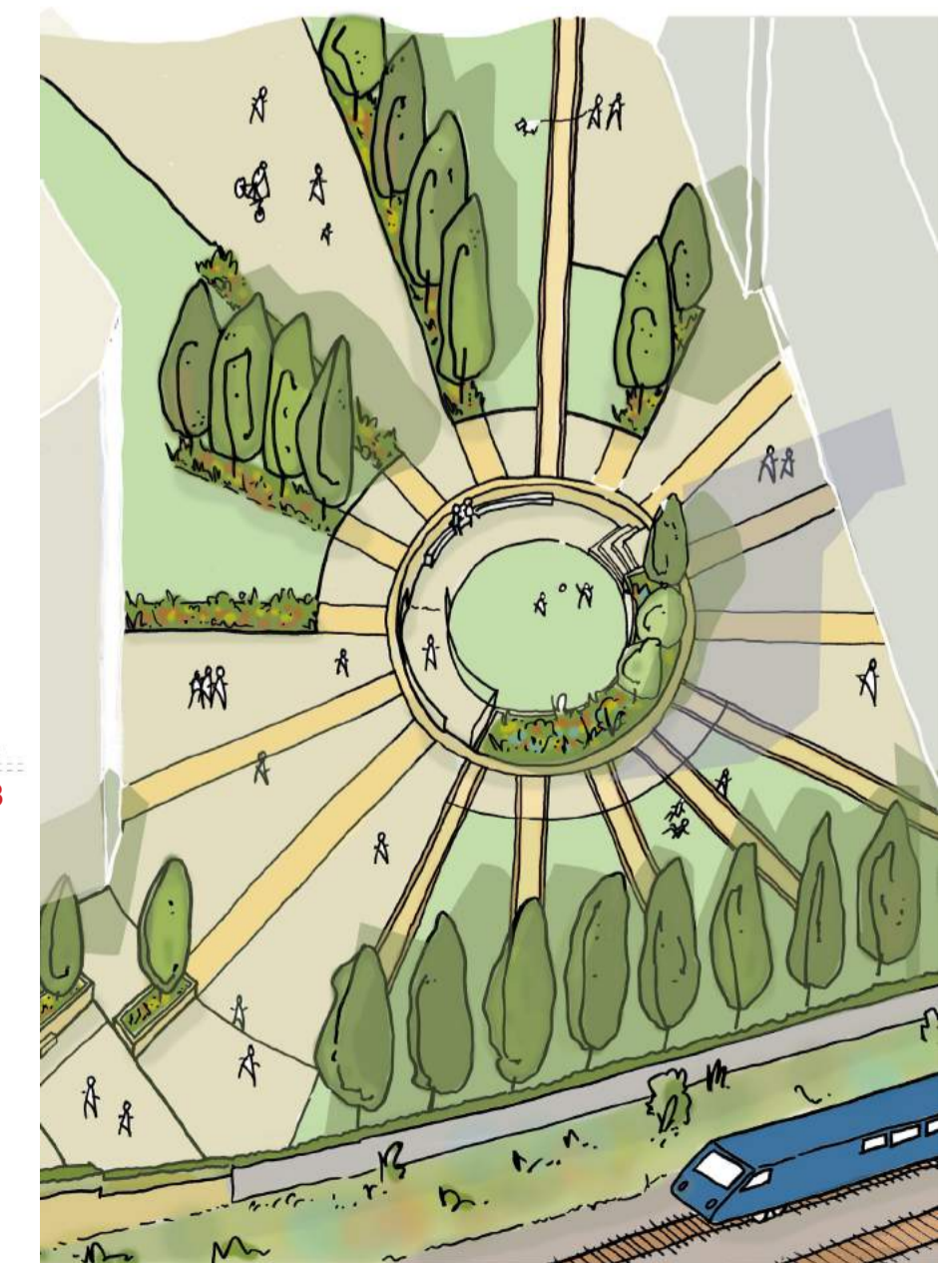
It is important that green, blue and grey infrastructure work in parallel across the site, to provide a joined-up approach to water management. Swales and rain gardens focus on bioretention, which will provide water treatment at source. These integrated landscape features capture and slow down water run-off in shallow depressions, letting it soak into the ground. This results in a more natural approach to water management, and relieves pressure on the existing sewer network.



Plan of the Clockmill Lane and Restalrig Connection



Sections AA-FF through the ramped connection from Clockmill Lane to the Restalrig



04 MEADOWSBANK Active Travel

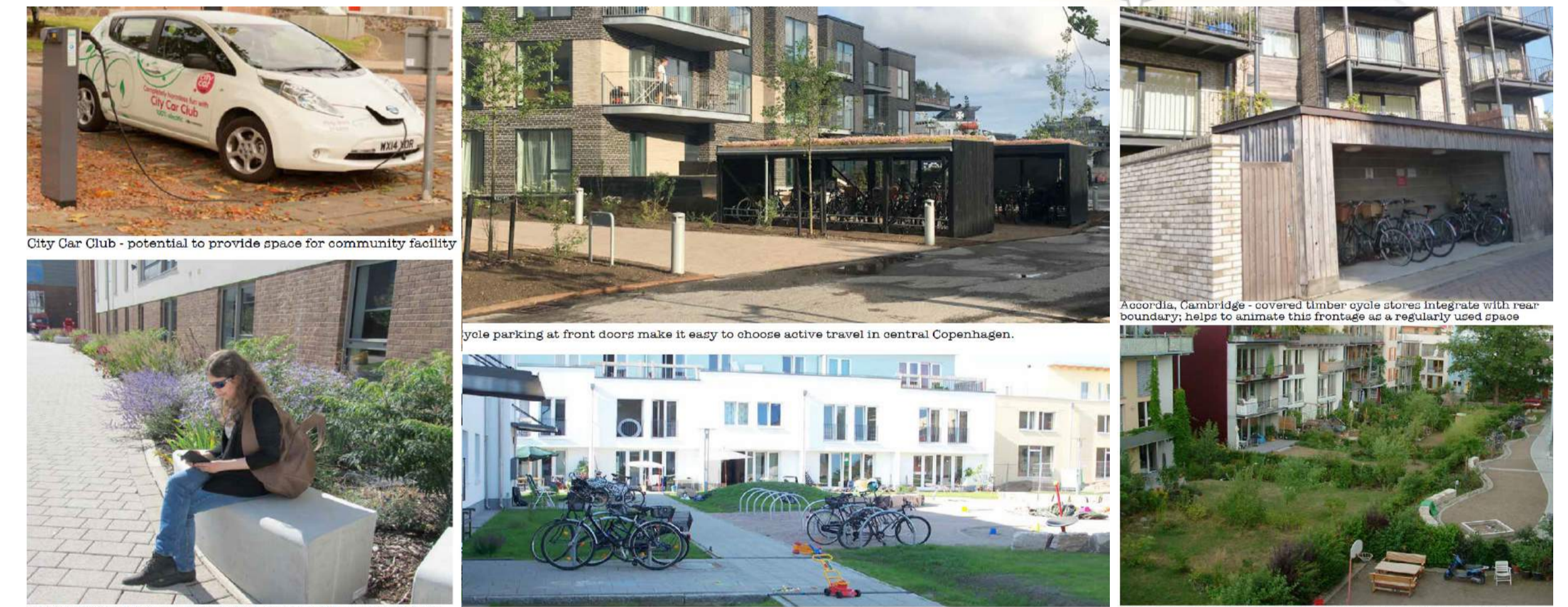
The Next Steps

Active Travel Village

The masterplan site, with its central location, presents the perfect opportunity for an active travel village. It is close to Holyrood Park and is a short distance from the centre of Edinburgh. Holyrood park has established cycle routes that are popular and well used so this site presents an ideal opportunity to create connections and further reduce the traffic on the roads.



Sketch of the Turntable Park and Cloackmill lane in use by pedestrians and cyclists



The new development seeks to embed cycling and pedestrians at the heart of its culture, making it as easy as possible to own and use a bike. All generations and abilities would be considered by providing access for a range of bikes including cargo bikes, electric bikes, assisted bikes, bike share schemes and other types. Journeys would be carefully analysed: from the daily commute, travelling to school, the trip to the shops or cycling for health and leisure. The design of homes would also consider cycle use: making sure there's ample and convenient storage for all items including cycle helmets and carriers.

Within the development, support could also be provided with bike service stations: communal bike pumps and allowing access to specialist equipment. The aim is to make cycling as attractive as possible and a viable alternative to other methods of transport. This is a significant move for a city in achieving carbon neutral targets and also a meaningful step forward in promoting the health benefits of active travel, all of which are well documented. The site is also well served with a range of local amenities, all within walking distance, and excellent public transport with fast and frequent connections into the city centre.



Various alternative means of moving through the city to address the well-being and help to improve health

