



# HEART OF NEWHAVEN

## Supplementary Background Reports



# Contents

<b>Primary Schools Workshop Report</b>	<b>p.3</b>
<b>Secondary School Workshop Report</b>	<b>p.9</b>
<b>Stakeholder Workshop Report</b>	<b>p.18</b>
<b>Drop-In Report</b>	<b>p.28</b>
<b>Survey Report</b>	<b>p.37</b>
<b>Presentation Boards from Drop-In Event</b>	<b>p.45</b>

# Heart of Newhaven – Primary Schools Workshop (18/6/19)

## 1 Overview

On 18 June 2019 a half-day workshop was hosted at Victoria Primary School, with pupils joining from Holy Cross Primary School, Trinity Primary School and Victoria Primary School. 27 pupils in total attended and were encouraged to mix and work collaboratively throughout the day. A variety of activities were carried out to encourage the young people to consider what they would like to see as part of a multigenerational centre within the Victoria Primary School building. A summary of the key activities is below.

## 2 Mapping Exercise

Pupils were given a map of Newhaven. They were asked to locate their home and school on the map, and then mark the route they took to school. The pupils were then given time to reflect upon their journey to school and the things they see in the community.

The pupils then continued to mark on the map areas they liked the most and what they liked the least. It was noted that having a variety of options available to them in Ocean Terminal, visiting Victoria Park and making use of the space there and the sporting and gym facilities were commonly mentioned as something that the pupils liked the most.

Pupils reported that areas being fenced off, littering within the wider areas such as Granton and Leith Park and the design of certain building frontages are widely disliked. The full list of responses can be found listed in the table below.

Like		Dislike	
Ocean Terminal (lots of things to do) x6	My house x5	Holiday Inn (it's ugly) x4	Fences to keep us out x2
Victoria Park x4	David Lloyd Gym x3	Victoria Park x2	Asda x2
The sea x2	The Edinburgh Sculpture Workshop x2	Litter in Leith Park x2	Mean people
Park Road park	Newhaven Lighthouse	Granton Park (because of littering)	The Dudleys (streets in the area)
Leith Citadel	Holy Cross Primary	Granton Park (because of littering)	Litter in the sea (because it kills animals)
Vue Cinema	The ice cream shop	The fishmonger (because they eat fish there)	Waterfront Apartments
Asda	Spider Park		

In the final part of this exercise, pupils were asked to think about what activities they do that they travel out of Newhaven for. The responses included travelling out of Newhaven to visit the theme park in Glasgow, swimming at the Commonwealth Pool, skiing, visiting the theatre and art galleries, going to the trampoline centre and football pitches, visiting Fountain Park entertainment centre and travelling to visit family and go on holiday.

## 3 Victoria Primary School as a Multi-Generational Centre

Pupils were familiarised with Victoria Primary School and that there is potential for a community group called The Heart of Newhaven to put forward a proposal to turn the building in to a multi-generational

centre for the community. The pupils were asked to consider what they would like to see happen, and encouraged to capture their thoughts and ideas on post-it notes.

The most popular suggestions from pupils on what they would like to see were a library which is accessible for everyone, sporting facilities such as a place to play football and go to the gym, a café, eateries and places where they could visit different kinds of animals.

The pupils were then asked to consider other people within the community of Newhaven, and what they may like to see. The PAS team explained that a multi-generational centre would work best when it connects people of all different backgrounds and is inclusive of all varieties of people for example age, disability, ethnic/cultural background, faith, interests and hobbies.

The most highly ranked suggestions from the pupils on what they felt other people might like to see were a place where people could go if they have any concerns or wish to talk to someone, a hub for arts and crafts such as knitting and cookery and a space that offers different facilities such as shops, cinema and a gym.

Looking at the responses from the students on both topics, it would appear that the key ideas are a space where everyone could go to read books such as a library, sporting centre that could allow people to participate in team sports and space that is open to anyone to meet up over coffee to socialise or participate in clubs. A full list of responses from the pupils can be found in the table below.

“What we would like”	Votes	“What we would like”	Votes
Aquarium – replace the bad fishmonger	3	The main building it could be a museum of the school because it’s old and a mini park for little ones	
Pizza Restaurant x3	3	Sports centre x5	
Library x5	4	Play centre x2	
Football pitch x6	2	Arcade x2	2
Café x8	5	Park	
Theatre		Homeless shelter x2	
Coding class		Things like the gala but it wold be people can choose who is the gala queen and gala king	
Museum x4		Hockey club	
Gym x5	1	A place where anybody can perform	
Mini golf		Nandos/restaurant	
Rugby		Sculpture/art gallery x4	
Care home x3		Trampoline park x3	
Fish shop		Apple store x2	3
Jewellery shop x2		Water park	
Park		Rise	
Sweets shop		Gravity	
Anchor building. It could be a café and in the playground it could be grass and picnic tables		Animal petting zoo x6	2
Skate Park		Technology club	
Operation theatre	1	Shops x2	2
School’s history x4	1	Aquarium x3	3
Cinema x5	2	Animal rescue centre x3	
Gaming studio		Pet training centre	
Swimming pool x6	1	Hair and beauty	
Dancing		Recycling centre	

“What we would like”	Votes	“What we would like”	Votes
Minecraft		Vets	2
Music lessons		Cooking centre	3
Fire station		Toy/joke shop	
Hospital		Nursery	
Restaurant x3	1	Mental health hospital	
For people who are sad and have problems they can come and calm down		Houses	
Police station		Cultural space	
Clares shop		Seafood restaurant	1
Baking club		Cooling centre	
Music studio		Support centre for special needs	
Art club		Ice cream parlour	5
Spa x3		Hotel	

“What others would like”	Votes	“What others would like”	Votes
Pet friendly x2	2	Yoga x2	1
Cinema x3		A centre to play games with the elderly	
Baking x3	3	Calm dancing centre for elderly and you to come too	
Board games x3		Care home for people with dementia	
Sewing/knitting clubs x5	2	Calm dancing place	
Book binding		Meeting up place for old people x2	1
Library x4	1	Swimming pool x2	
Quizzes x2		Hot tub	
Restaurant x2	2	Singing show	
Old folks home x2		Watch MasterChef on tv	
Sailing		Play centre	
Indoor golf x2		Shops	
Art room or clay	1	Sleeping x2	
Drawing		Trampolines	
Nursery x2		Rise	1
Gym x4	3	Music x2	
Preparations for Brexit/emotional talks	6	Spa x2	
Gardening x4		Dance centre x3	
Bowling		Somewhere for all ages	
Cards for old people x2		Eat pizza	

#### 4 Skills Learnt and Shared

Following the previous exercise where pupils were asked to consider other people’s needs and wants, they were encouraged to think about what they could learn from other people who may have different backgrounds, and what they could possibly teach them in return. Their thoughts were captured on post-it notes and are listed below.

- Music
- Animal care
- Knitting class









# Heart of Newhaven – Trinity Academy Workshop (21/6/19)

## 1 Overview

On 21 June 2019 a half-day workshop was hosted at Trinity Academy. Eighteen pupils in total attended and were encouraged to mix and work collaboratively throughout the day. A variety of activities were carried out to encourage the young people to consider what they would like to see as part of a multigenerational centre within the Victoria Primary School building. A summary of the key activities is below.

## 2 Google Cardboard

Pupils were presented with images of Victoria Primary School through Google Cardboard to familiarise themselves with the location and existing space at the school. The pictures were taken at the end of the first workshop, hosted at Victoria Primary School.



Victoria Primary School courtyard



Victoria Primary School library

## 3 Mapping exercise

Pupils were given a map of Newhaven. They were asked to locate their home and school on the map, and then mark the route they took to school. The pupils were then given time to reflect upon their journey to school and the things they see in the community.

The pupils then continued to mark on the map areas they liked the most and what they liked the least. It was noted that the network of quiet and green cycle paths, Western and Newhaven Harbours, Ocean Terminal and David Lloyd Gym were commonly mentioned as something that the pupils liked the most.

Pupils decisively expressed their dislike of wastelands, referring to the unbuilt area at Western Harbour. They also reported that Trinity Academy, self-built skate park, litter and lack of clean green streets are some of the features in the area they dislike. The full list of responses can be found in the table below.

Like		Dislike	
Cycle paths x6	Harbour x4	Wasteland (brownfield, part of Western harbour) x10	Trinity Academy x2 (decrepit school)
Ocean Terminal x3	David Lloyd Gym x3	Litter and lack of clean green streets	Self-built skate park
Porto & Fi Deli (it has a nice view) x2	Newhaven Lighthouse x2	The abandoned areas	Victoria Park
Coastline	Heritage of Newhaven	Citadel	Britannia (because it's really posh)
Self-built skate park	ASDA	New builds	Takeaways
Vue Cinema	Victoria Park		
Brownfields	Buses		
Bangholm (a lot of sports clubs)			

In the final part of this exercise, pupils were asked to think about what activities they do that they travel out of Newhaven for. The most frequent responses included sports facilities, such as swimming pool and ski resort, shops that cannot be found at Ocean Terminal, museums and art galleries, medical facilities, nice and clean beaches, drama and dancing classes, the airport and big green spaces.

#### 4 Victoria Primary School as a Multigenerational Centre

Pupils were familiarised with Victoria Primary School and that there is potential for a community group called The Heart of Newhaven to put forward a proposal to turn the building in to a multigenerational centre for the community. The pupils were asked to consider what they would like to see happen, and encouraged to capture their thoughts and ideas on post-it notes. They were then asked to vote with sticky dots (three dots per person, all or some per idea, not voting for one's own suggestions) on the ideas they think should be introduced first and would be the most beneficial for those using the centre. The results of this activity are documented in the tables below (numbers in red represent the number of times this idea/response was recorded across the group of participants).

The most popular suggestions from pupils on what they would like to see were activity rooms to rent out (possibly free of charge or without membership), sports and multipurpose hall, theatre group, place to read and study, with homework or study support available. The activity also revealed strong support for environmental consciousness and learning about climate change within the community – an apt suggestion given the coastal location of Newhaven. Other popular suggestions include a café, space for playing music and spaces for fundraising/charity activities.

The PAS team explained that a multigenerational centre would work best when it connects people of all different backgrounds and is inclusive of all varieties of people for example age, disability, ethnic/cultural background, faith, interests and hobbies.

The pupils were then asked to consider what are the skills they could share with other people and what skills could others teach them. The most highly ranked suggestions from the pupils on what they felt they can share with the community were education about the climate crisis, playing drums and music in general, activism and support with school lessons. On the other hand, they suggested that others can teach them skills in knitting, singing, art and maths.

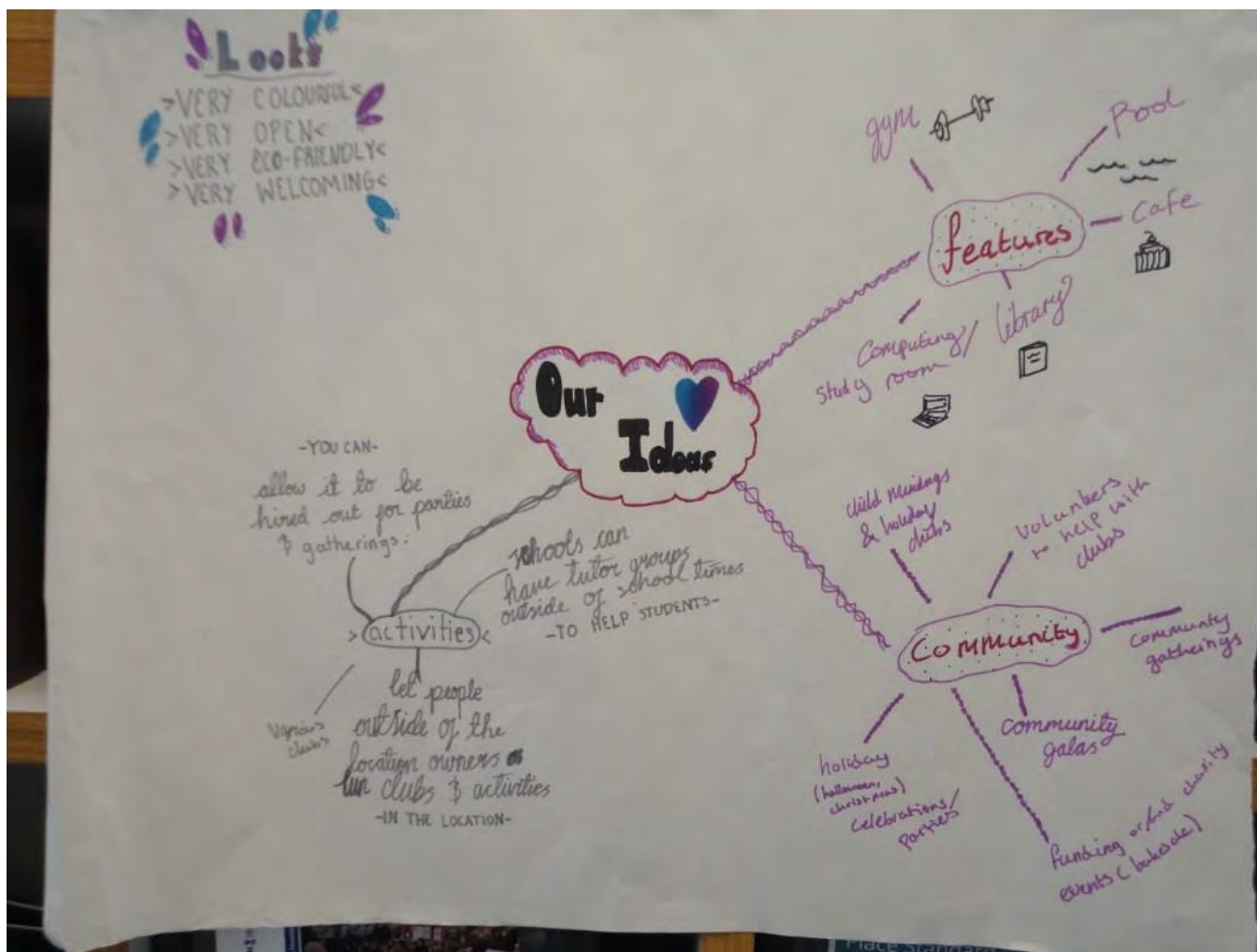
What I can teach others?	Votes
The climate crisis	3
Activism	1
Music	1
Playing drums	2
School lesson support	1
Sea cadets (national youth charity)	
Knitting and sewing	
Outdoor skills	

What others can teach me?	Votes
Knitting	1
Singing	
Art	1
Maths	
Others hobbies and skills	
Career mornings to help younger generations	

What we would like to see in Victoria Primary School	Votes	What we would like to see in Victoria Primary School	
Rooms to rent out (for free) x3	6	Free workshops and events	
Theatre group x2	6	Concerts	
Homework/study support for children x2	5	Chess club	1
A place to read or study x3	4	Youth groups	
Sports/multipurpose hall x5	5	Book club for older kids to read to younger kids	1
Music space x3	3	Crèche/nursery x2	
Place for fundraisers/charities	4	Language courses	
Environmentally conscious (building? activities?)	3	Craft groups	
Climate change (education) within the community	3	Sports clubs	
A place for children to hangout x2	2	Scout groups	
Music rooms	2	Garden	
A place with free internet access with computers x2	1	Lectures	1
Café x4	1	Gym x2	
Place to rent for dance lessons, rehearsals or school work x2		Swimming pool	
Charity coffee mornings x3	1	Art gallery	1
Library x3	1	Museum	
Music lessons/activities x3		Games hub	
Family area- place to meet/chat		Mental health support x2	
Cooking activities for all ages x2	1	Movement classes	
Space open to everyone x2	1		
Food bank			
Job fairs			
Clubs (book, film, baking clubs)			

## 5 Proposals

Finally, the pupils were asked to consider everything they had discussed so far, and use those ideas and information to produce a poster on their proposal for the building. Pupils were working in pairs and groups of threes and produced total of six posters. Below are pictures of the posters produced during the workshop, with the key ideas summarised below each picture.



### Key Ideas

#### Looks

Very colourful, open, eco-friendly, welcoming

#### Activities

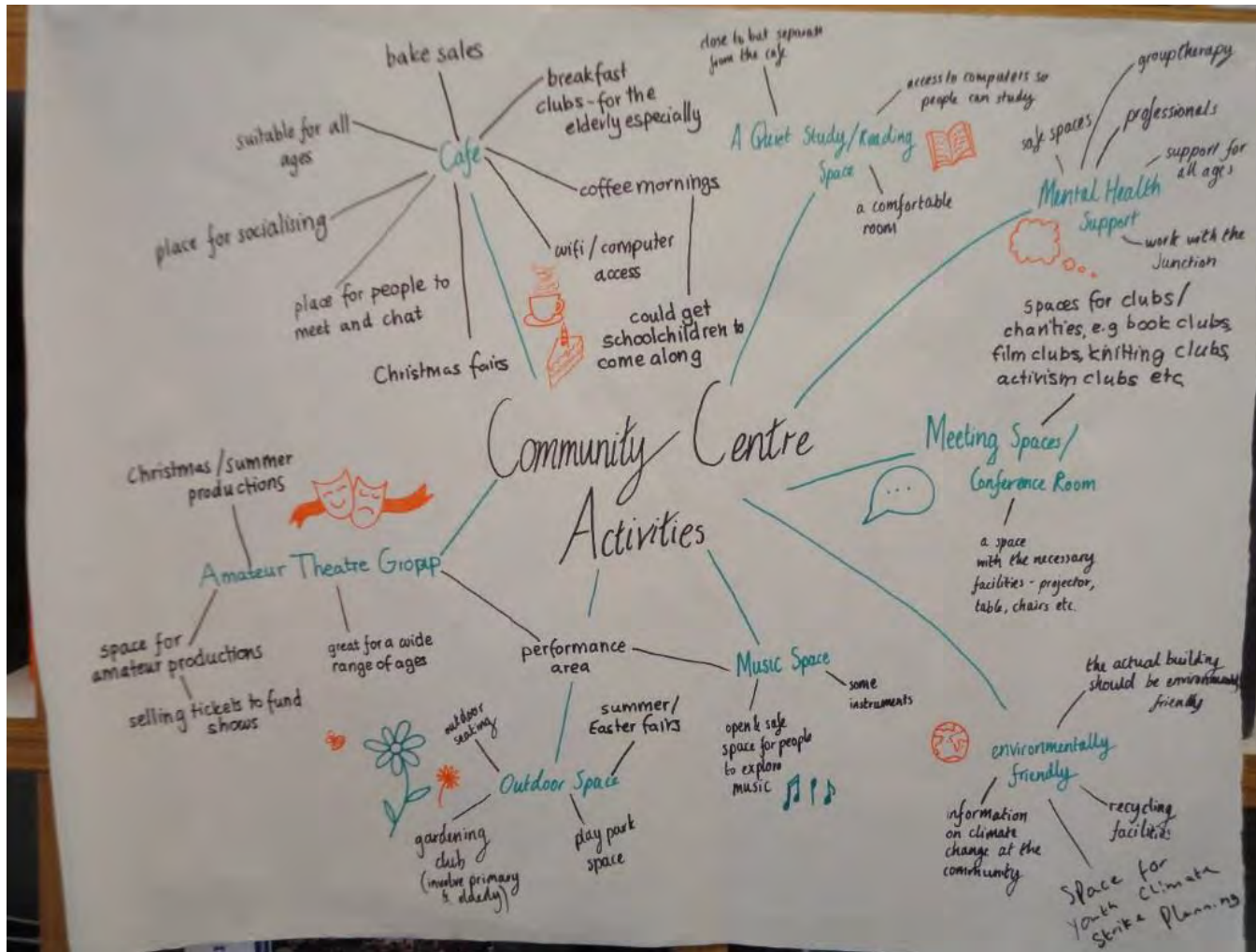
Possibility to hire out for parties and gatherings, tutor groups outside of school time, clubs and activities

#### Features

Gym, swimming pool, café, library, computing/study room

#### Community

Events, volunteering and charity events



## Key Ideas

### A quiet study/reading space

Comfortable room, separated but close to café, access to computers.

### Mental health support

Support for all ages, group therapy, safe space, connect and work with The Junction.

### Meeting spaces/conference room

Space with projector, space for charities and different clubs.

### Music space

Instruments, performance area

### Outdoor space

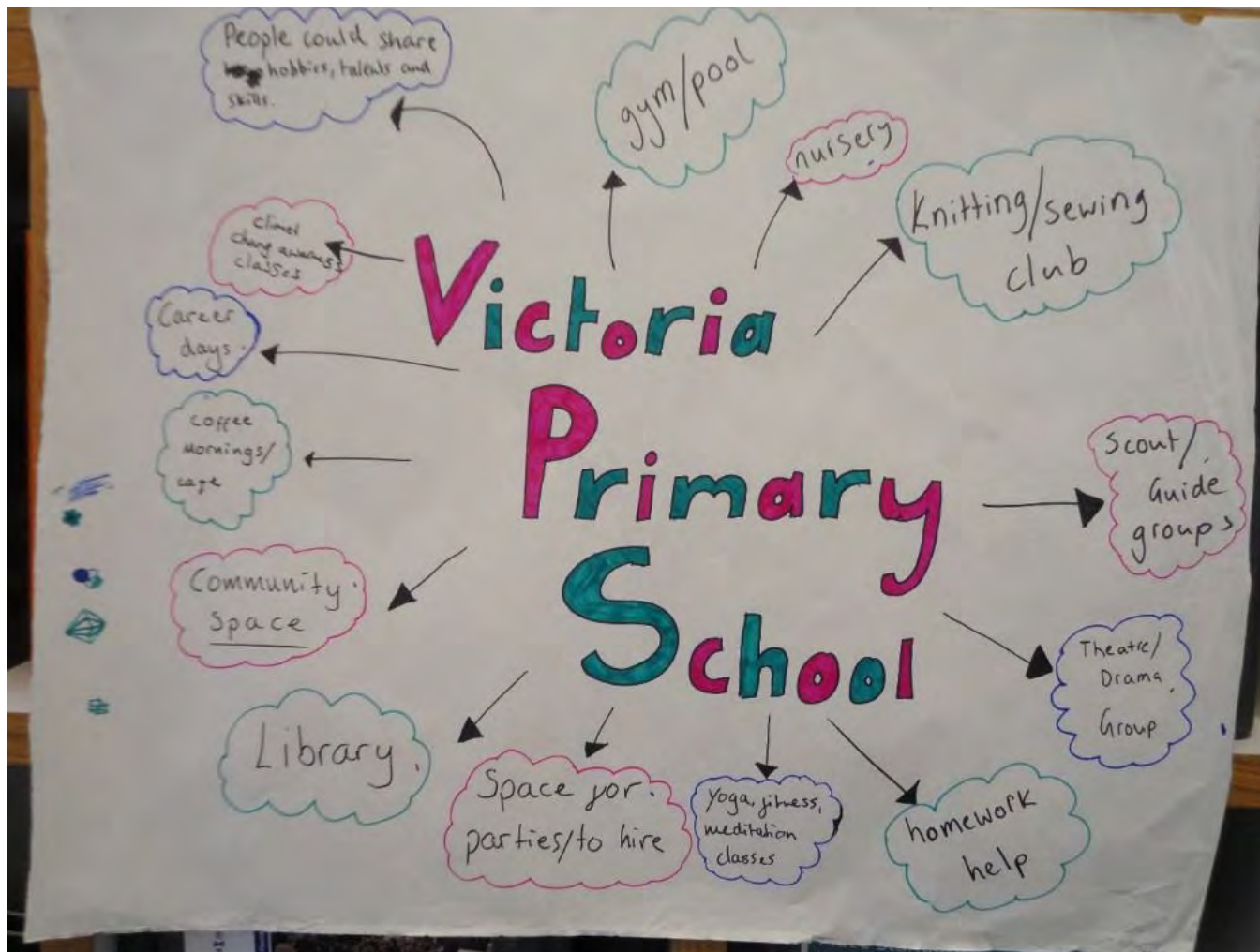
Summer fairs, park, gardening club, outdoor seating

### Amateur theatre group

Space for amateur productions, great for wide range of ages

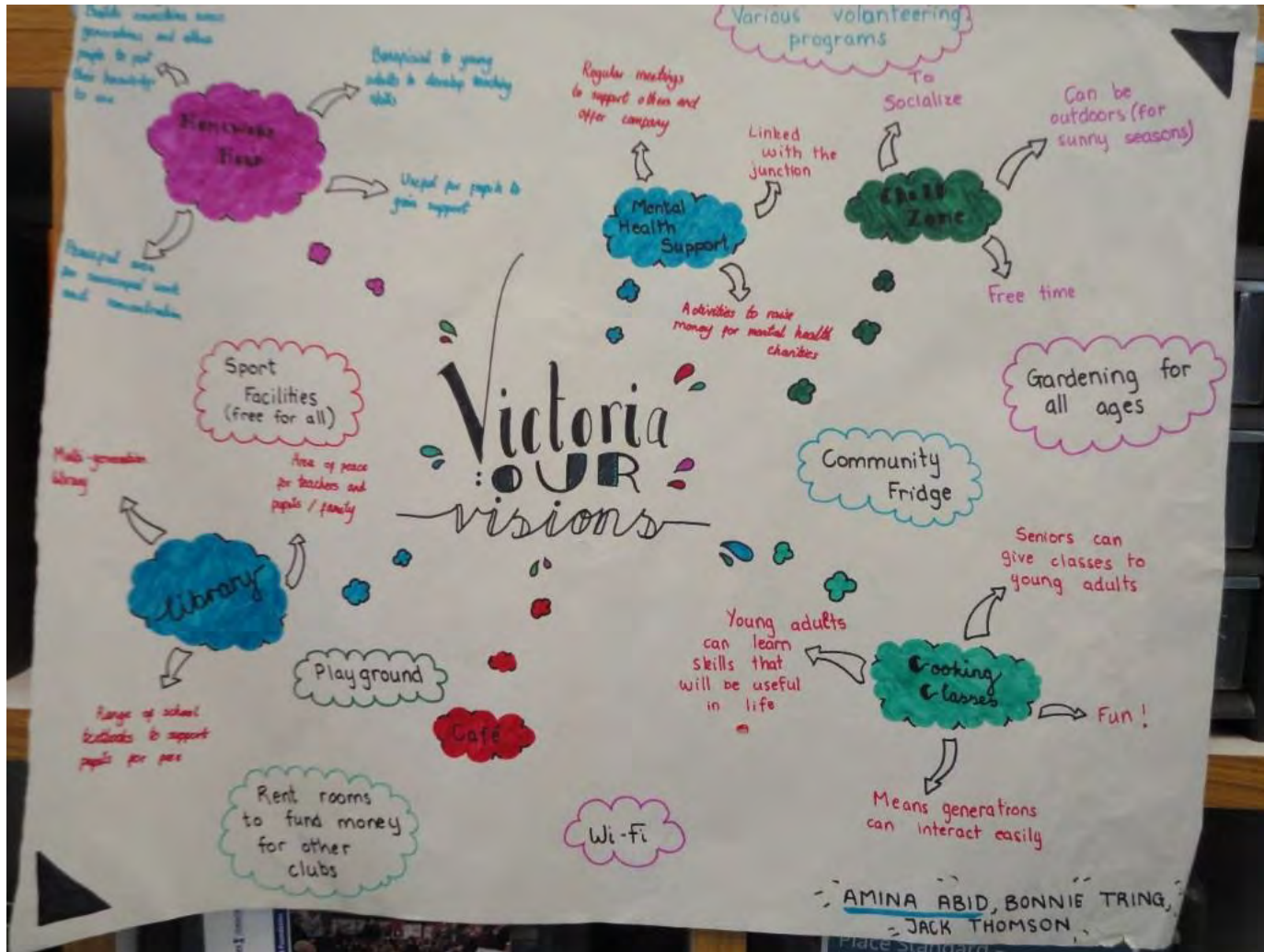
### Café

Coffee mornings, Christmas fairs, computer access, breakfast clubs- especially for elderly, place for socialising.



### Key Ideas:

- sharing hobbies, talents and skills
- gym, swimming pool, yoga, meditation classes
- nursery
- knitting/sewing club
- scout groups
- climate change awareness classes
- theatre/drama group
- homework support
- space for parties
- library
- coffee mornings
- career days



## Key Ideas

### Homework help

Pupils getting support, develop teaching skills, peaceful area for work and concentration

### Mental health support

Regular meetings, linked with The Junction, raise money for mental health charities

### Chill zone

Socialising, outdoor space

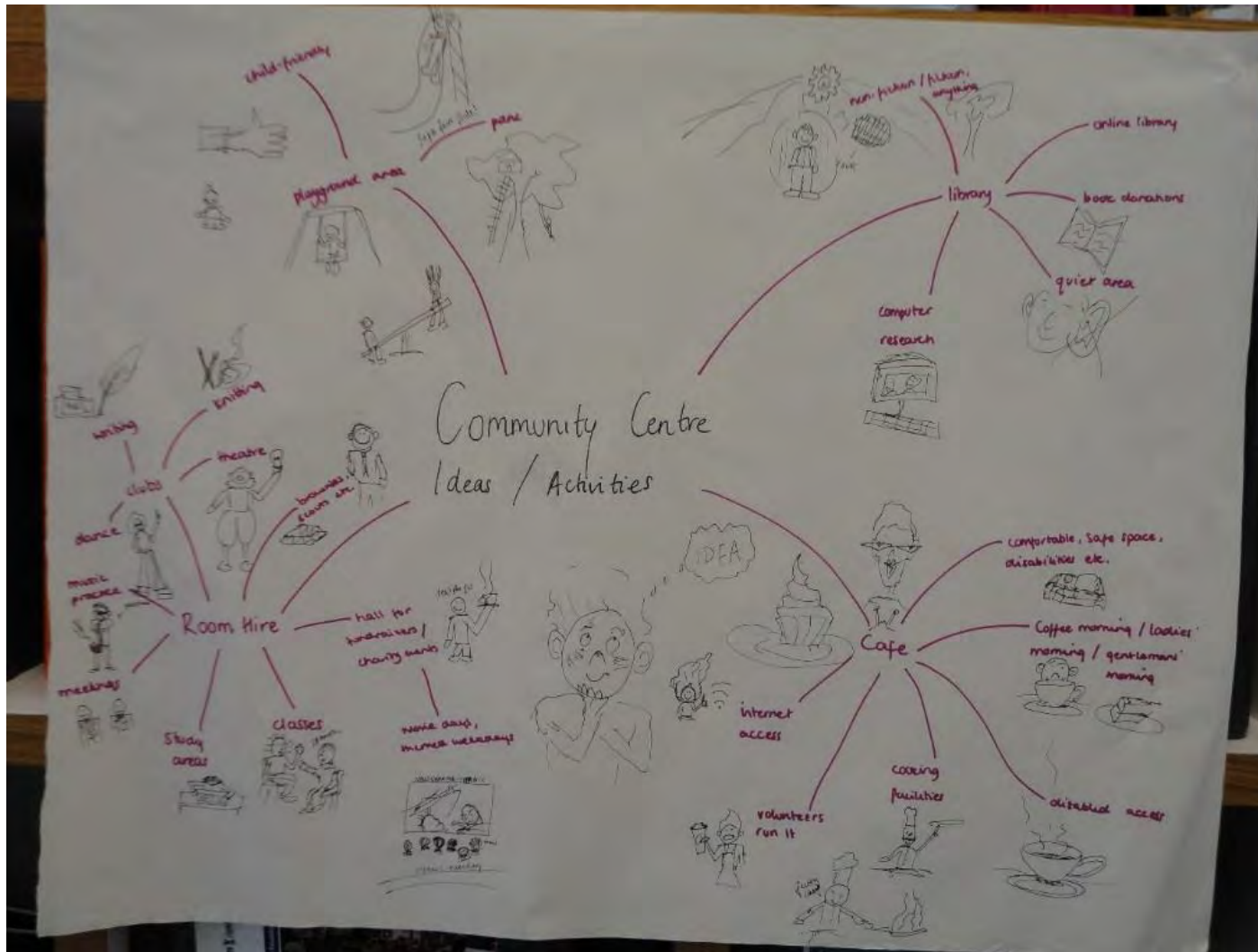
### Cooking classes

Seniors giving classes to youth, learning useful skills, interaction of generations

### Library

Quiet space, teachers to support pupils, multi-generational library

**Sport facilities, café, playground, community fridge, wi-fi, gardening, rooms to rent**



## Key Ideas

### Room hire

Different clubs, music practice, meetings, study area, classes, fundraising

### Child friendly playground area Library

Online library, book donations, quiet area, computer research

### Café

Internet access, ran by volunteers, coffee morning, cooking practice, comfortable space, access for disabled





## Key Ideas

- community fridge
- cooking classes
- café
- internet access
- connection with The Junction
- multipurpose space for hire
- garden space
- community events
- educational groups
- stay environmentally conscious
- mental health support

## Summary

Findings from the posters show that pupils were strongly in favour of different activities taking place at Victoria Primary School. Some of the regularly proposed activities were study support groups, cooking classes and fundraising/charity activities. Pupils also expressed their affection for different spaces, such as café, library, sports facilities and playgrounds. Access to the internet, co-operation with The Junction and climate change education were also highly prioritised.

# Stakeholder Engagement Workshop (25/6/2019)

## 1 Overview

On Tuesday 25 June PAS facilitated a half day workshop (2pm – 4pm) on behalf of the community group The Heart of Newhaven. Held at Newhaven Church, the purpose of this workshop was to invite various stakeholders from, or working in, the Newhaven/Leith/Trinity area to identify what intergenerational activities could occur in the Multigenerational Centre proposed by the HofN for Victoria Primary School (Newhaven). The following groups attended the event:

- Men of Leith Men’s Shed
- Pilmeny Development Project
- City of Edinburgh Council (Planning)
- Newhaven Church
- History of Education Centre
- Port O’Leith Motor Boat Club
- CEC (NW Lifelong Learning)
- Forth Neighbourhood Partnership
- Newhaven Heritage Centre
- SNP Councillor (Forth Ward)
- Pilton Equalities Project
- Victoria Primary School
- NHS Lothian
- Forth Children’s Theatre
- Coastal Rowers
- North Edinburgh Childcare
- Trinity Community Council
- Edinburgh Sculpture Workshop

## 2 What is a Multigenerational Centre?

The initial session of the workshop asked the participants to consider what they felt defined a “multigenerational centre”.

It is clear from the responses from participants that they feel a multigenerational centre needs to be a safe space that allows people of all ages and backgrounds to come together and interact with each other. The participants also feel it is important that the centre must offer a space whereby all age groups can share knowledge and learn from one another, participate in events and socialise together. A full list of responses can be found below:

- A place where the whole community can come together for events and classes – big and small
- A place where all ages, ethnic groups and abilities can find a common space
- A space which is suitable for use by people of all ages (x3)
- A multi-use, welcoming community centre for all
- A centre where different generations interact.
- An opportunity for all ages to engage and benefit from each other
- A place to share knowledge / skills / enthusiasm
- A nursery and café
- Accessible for all age groups, welcoming, friendly place for people to feel safe
- Place where different generations can mix and share ideas and activities
- A place where groups representing different interests and age groups share resources
- Something there for everyone, no matter what age!
- Facility for all generations to meet and socialise.
- An inclusive and welcoming space to share experiences and ideas
- What we learn from each other across the 0 – 80 + years we live
- Community involvement in place covering as many facets as possible

### What is a Multigenerational Centre? (cont)

- Multigenerational centre – where all ages meet, some together eg café, some separate eg businesses...
- Shared learning wisdom across generations
- A place to socialise, share heritage and build up resources for community and creative arts
- Use by a variety of organisations of different ages
- Where different age groups have the opportunity to participate in activities and socialise
- A hub for multi-functional social, civic and educational purposes across the age spectrum
- A place where there is something for everyone, no matter their age or stage in life
- A space that is used across ages and stages. Ideally a place where generations interact in their learning and doing
- A safe space for young and old to engage and learn and have fun
- A venue that links the present generations with the past generations back into time!

### 3 Likes and Dislikes in the Area

Participants were then encouraged think about one thing they really liked about Newhaven and the surrounding areas, and one thing they think needs improved. Participants were asked to note their thoughts on a post-it note, which were captured and can be found in the table below.

It is noted from the participants' responses that the history and heritage of the area is something that they are really positive about. Participants also liked the setting of the village beside the harbour, its strong identity and the great sense of community within the area.

When asked what they felt needs improved, the participants seemed keen to improve facilities for young people – including a crèche and a space for teenagers. They also felt that more sport facilities could improve their experience of the area. Furthermore, participants felt that further promotion of the area to boost the local economy and community spirit would be beneficial.

Like	Needs Improved
Its history and heritage	Museum x2
Sea – open air. Some green areas	A need for community
There is a sense of community here – like living in Newhaven	Space and facilities for teenagers and young people
Nothing	Affordable crèche service in the area – affordable childcare
Heritage and sense of belonging	Better information and discussion and debating facilities – topics popular and relevant
Picturesque area around harbour	Breaking down divisions that isolate
The harbour, retain village	Practical day to day support based on community spirit
Sense of dynamic history and ongoing development	Create its own (Newhaven) Community Council!
Its culture and heritage	Cleanliness

Like	Needs Improved
Being by the sea	Publicity about the area
Strong sense of ownership and care for the community – people know one another	Move the cruise line boats to elsewhere
The school	Marina centre to attract all other ventures
Newhaven is a distinct community	Continuation and extension of the community feel
Link to city, cycle paths, near water, waterfront development	A caring community empowered and confident
The sea and harbour	More arts reflecting the history and heritage
Victoria Park and Starbank Park	Older people have a presence in the community and a real “voice” – not an add-on/afterthought
The old railway	Facilities to engage young people to have constructive use of their time
A sense of history and connection to the sea is clearly highly valued	That Newhaven continues to grow and that strong sense of community grows with it
Good export links, fairly central	Investment in the local economy – cruise ships not whisked away!
Seems to have a good community spirit	Tennis courts, football pitches in areas not built on as yet
Sense of community, history, beside the river Forth	Full time nursery, childcare (anchor building) and after school. Youth group. Full time youth worker for the area
Character and distinctive coastal identity	Gym hall to have table tennis and football
Strong identity	
Retention of old character as historic buildings but has also moved with the times	
Youth groups recreational facilities, use for after school club – café	
Shape of the village – the café and restaurants and the water and harbour	

#### 4 Developing Ideas

The Heart of Newhaven community group had gathered a number of ideas and proposals at engagement events held in late 2018 and early 2019, which are shown in the table below. Participants were then asked to review these ideas and contribute new ideas where they were missing. These new ideas are shown in **bold red**.

<b>Community &amp; Wellbeing</b> - Socialising, mental & physical health and wellbeing, loneliness, befriending	<b>Culture &amp; Heritage</b> - Belonging, community, Newhaven village, song / work, fishing, history, connection with the sea	<b>Learning &amp; Enterprise</b> – Affordable informal activity and learning opportunities for all ages and experiences
Uniformed youth groups – Scouts, cubs, brownies, guides, cadets, etc.	Permanent Museum	Early Years Provision - Affordable childcare and soft play facilities
Community Resource and Advice centre – for newcomers, health & wellbeing, homeless etc.	Victorian School Classroom	After School Club
Exercise and fitness centre	Forth Children’s Theatre	Further Education courses – Short courses, night courses, advocacy training, languages, environment and ecology, seafaring / navigation, etc.
Public Health Hub: Provision and Support – drug treatment, support groups, mental health, family etc.	Artist Studios	Life Skills Courses – health & wellbeing, personal finance, employment, animal training/welfare, digital access, parents and tots, etc.
Film club / <b>Community Cinema</b>	Community Choir	Cooking class facilities and food preparation
Jazz club	Gallery/presentation space - Christmas windows, etc.	Jobs Fair
Community Café / Community Meals (healthy eating)	Library	Co-working spaces - workshops and studios, start up business units, etc.
Men’s Shed: space for men to connect, converse and create – workshop, etc.	<b>Community Mural</b>	Creative Space with learning provision – dancing, music, art, salsa, Bollywood, belly dancing, ‘The welcoming’, music gathering, photography, etc.
External Climbing Wall	<b>Graffiti Wall / Street Art</b>	Boat building space with learning provision.
Gardening Club & Greenspace	<b>Artist in residence programme to connect with studies and groups</b>	Furniture / Carpentry Space with learning provision

<b>Community &amp; Wellbeing</b> - Socialising, mental & physical health and wellbeing, loneliness, befriending	<b>Culture &amp; Heritage</b> - Belonging, community, Newhaven village, song / work, fishing, history, connection with the sea	<b>Learning &amp; Enterprise</b> – Affordable informal activity and learning opportunities for all ages and experiences
Storytelling Group	<b>A base for tours for those on cruise ships and hotel to explore local heritage, including the school and local businesses</b>	Sewing / knitting space with learning provision
Social Activity for older groups - tea & scone gathering and whist drives, etc.	<b>Ancestry / Genealogy research – Family tree searching</b>	Digital Access Space with learning provision
Literary Society		Retail/Market Space – Farmers’ market, car boot sales, etc.
Foodbank		Employment Forum – e.g. skills exchange, odd jobs exchange, promotion of employment of opportunities for disadvantaged people.
Knit and Natter Group		Light Industry Space - Microbrewery / Gin Distillery, etc.
Tool Library		Meeting venue and bookable space, large and small – weddings, local groups
Photography Group		<b>New marina</b>
Live entertainment space – Ceilidh, weddings, etc.		
Youth Club / Teenage Space – Informal space		
<b>Disability Group</b>		
<b>Debating Group / Place for debating on different topics</b>		
<b>All weather multi-sports pitch in the playground</b>		
<b>Permanent quiet/reflective space</b>		
<b>Family support drop in with people like pastor, safe families, home for good, kinship carers etc.</b>		
<b>Multicultural sharing – cooking, language, heritage</b>		

#### 4.1 Testing and Development

Each facilitated table was then asked to choose 3-4 ideas which they thought were important and develop these in more detail. The groups appeared to show a preference for:

- a multi-use skills sharing hub/workshop
- a performance venue for theatre and entertainment
- a permanent museum and Victorian school
- a community advice centre/and sign posting resource
- an adult and child day care facility
- music (local band) and storytelling groups, linked to disability support (eg dementia)

More detail on each idea can be found below.

<b>Idea</b>	<b>Skills sharing hub</b>
<b>Is this new to the area?</b>	No
<b>Who would use this?</b>	Intergenerational learning; individuals and groups; those interested in an ethos of reusing and recycling; arts and entertainment skills (prop making, stage craft)
<b>Who would take the lead?</b>	Newhaven Church Children and Youthworkers; Men's Shed; Changeworks
<b>How could it be funded?</b>	Grant funding; sales of made goods; crowd-source funding by project.
<b>What are the physical/space requirements?</b>	Safe storage for tools & equipment (bike repair; sewing; power tools); work benches; classroom (large); cooking space.
<b>What outside help would be needed?</b>	Mentors/Individual community members to commit to sessions.
<b>How will this activity be intergenerational?</b>	Naturally-shared learning. Actively engage with younger generation by offering thing related to their desired learning.

<b>Idea</b>	<b>Performing Space (&amp; Bar)</b>
<b>Is this new to the area?</b>	Yes (Leith theatre is too big)
<b>Who would use this?</b>	Forth Children's Theatre – as a rehearsal space; music groups; bands; ceilidhs; the schools; Forth Children's Theatre (FCT); Debating society; Book readings
<b>Who would take the lead?</b>	Forth Children's Theatre; Newhaven Choir; Theatrical expert; the colleges / student networks.
<b>How could it be funded?</b>	Creative Scotland; ticket sales; advertising; bar; hire; sponsorship; flexible space; link to other city theatre groups and festivals; commercial enterprise.
<b>What are the physical/space requirements?</b>	The gymnasium
<b>What outside help would be needed?</b>	Volunteers, experts; those with theatre experience; 'Pie-Pint-Play' idea (Traverse Edinburgh, Oran Mor Glasgow)
<b>How will this activity be intergenerational?</b>	All ages to take part in FCT

<b>Idea</b>	Permanent Museum (PM) & Victorian Schoolroom (VS)
<b>Is this new to the area?</b>	No
<b>Who would use this?</b>	PM - All ages; school trips; visitors; researchers; tourists Scottish heritage interest & genealogy; other heritage interest groups. VS - All generations from Primary School children to Alzheimers groups, mixing and talking about their experiences.
<b>Who would take the lead?</b>	PM - Newhaven Heritage & Newhaven History Group VS - History of Education Centre
<b>How could it be funded?</b>	Donation; ticket sales; sales of merchandise; grant funding (would need to get collection accredited for some funding)
<b>What are the physical/space requirements?</b>	PM - 2 classrooms (46 & 49); larger classroom for museum (ground floor) – anchor building?; space for display cases; require independent control of heating for exhibit climate. VS - Two larger classrooms setup permanently as classrooms and museum.
<b>What outside help would be needed?</b>	General volunteers – setup & day to day (2-3 for Museum. Victorian school room (has staff, charge); partnership with Newhaven Heritage; involvement of the children to guide.
<b>How will this activity be intergenerational?</b>	Access for all ages; older generations teaching younger generations and helping them research community history, as well as young people to inform curating, presentation, and marketing alongside. They will mix to discuss and learn.

<b>Ide</b>	Create a Community Map / Community Resource & Advice Centre - newcomers, health & wellbeing, homeless.
<b>Is this new to the area?</b>	Yes
<b>Who would use this?</b>	New people coming in, a 'welcome club', AirBnB as well; recycling days / 'Bucket Days'; where to get certain facilities; link to citizens advice / information centre; where are the toilets / ATMs / shops internet café; links to health & wellbeing / walkable routes / cup of tea at the end; cruise traffic just to sit / facilities.
<b>Who would take the lead?</b>	Part of management structure of centre; tourist info centre; Grant (money); NHS health & wellbeing group could support; young people as 'guides'; council lifelong learning; link to Heritage Trail.
<b>How could it be funded?</b>	Scottish Tourist Board; Council – community grant money; Leith Community Council.
<b>What are the physical/space requirements?</b>	Front door / shop front for info hub – Lindsey Road access, small office.
<b>What outside help would be needed?</b>	Permanent map outside; other websites and links.
<b>How will this activity be intergenerational?</b>	Volunteer assistance from pupils eg Duke of Edinburgh Awards; Family Quiz day; Family sports day; Advice is provided by all generations.



<b>Idea</b>	Dementia Group / Music Teaching / Band Orchestra
<b>Is this new to the area?</b>	No (however linking music to dementia group is)
<b>Who would use this?</b>	Link to dementia groups – the last thing they love/remember is music/hearing; Local Choir; People who want to learn how to play
<b>Who would take the lead?</b>	Set up a new focus group; John Williams (Men's shed) – plays instruments.
<b>How could it be funded?</b>	Improvements at low cost / donated e.g. tamborines, mouth organs; making music with vegetables.
<b>What are the physical/space requirements?</b>	A room on a regular basis; sound proofing.
<b>What outside help would be needed?</b>	Learn from 'The Big Noise' at Raploch; Volunteers (to teach); Sistema Scotland.
<b>How will this activity be intergenerational?</b>	Choir Groups – more 'we' than 'me'; link to gala days/shows, etc; Dementia group; link with school teaching; young and old raking and learning together; link to drama groups and singing groups.

<b>Idea</b>	Conversare Events
<b>Is this new to the area?</b>	Yes
<b>Who would use this?</b>	All users. It would form part of the care ethics of the project.
<b>Who would take the lead?</b>	Could be groups of children who take the lead.
<b>How could it be funded?</b>	Doesn't need funding, simply needs to be an identified space.
<b>What are the physical/space requirements?</b>	Could be a window on outdoor; small space but obvious and defined wherever it is that anyone can chat there; could recreate the old 'street scene' / doorstep.
<b>What outside help would be needed?</b>	None
<b>How will this activity be intergenerational?</b>	In its very setup. It will be obvious could easily grow into more formal groups.

<b>Idea</b>	Adult Day Care working alongside Early Years Provision
<b>Is this new to the area?</b>	Yes
<b>Who would use this?</b>	Under 5s and parent / carers; older generation; teenagers (perhaps evening times)
<b>Who would take the lead?</b>	Partnership of people / organisations who have expertise in both areas.
<b>How could it be funded?</b>	Major trusts may be interested; Enough research to verify benefits to both groups; developers contributions for any new building in the area.
<b>What are the physical/space requirements?</b>	The current anchor building is fully accessible; shared space in the garden.
<b>What outside help would be needed?</b>	Independent childcare providers and/or Council.
<b>How will this activity be intergenerational?</b>	In its setup and daily activities, and the core of the project.

<b>Idea</b>	Storytelling Group
<b>Is this new to the area?</b>	Yes
<b>Who would use this?</b>	Locals and displaced Newhaveners.
<b>Who would take the lead?</b>	Theatre and local history groups.
<b>How could it be funded?</b>	Just needs a space.
<b>What are the physical/space requirements?</b>	Meeting room.
<b>What outside help would be needed?</b>	Mobile Library residence.
<b>How will this activity be intergenerational?</b>	By its nature.

<b>Idea</b>	Improve Local Signposting to link to Culture & Heritage
<b>Is this new to the area?</b>	Yes – if it is sculpture or street art.
<b>Who would use this?</b>	N/A
<b>Who would take the lead?</b>	-
<b>How could it be funded?</b>	-
<b>What are the physical/space requirements?</b>	Conceptual
<b>What outside help would be needed?</b>	-
<b>How will this activity be intergenerational?</b>	-

# Heart of Newhaven – Drop In (17/8/2019)

## 1 Overview

On 17 August 2019 the Heart of Newhaven (HofN) Community Group conducted a Taster Event in Victoria Primary School. In total approximately 180 people attended the event over a period from 10am to 3pm. As part of this PAS ran a Drop In presentation, showing nine A1 sized boards which summarised the proposal for a multigenerational centre, the types of engagement which had occurred since October 2018, and how activities may be arranged into similarly functional themes. The themed groupings also had detail on how activities and initiatives could be delivered (who could deliver, space requirements, how they could be made intergenerational, etc). Participants were asked to note the ideas they liked with a sticky dot, and make comments on any aspect of the detail provided. The following report summarises the feedback gathered from participants.

## 2 How We Engaged

Participants were asked to review the list of those that had been consulted and suggest the names of any further groups or organisations. Five organisations were suggested, ASDA, St Columba's Hospice, Starbank PH, The Lodge, Old Chain Pier and Madelvic. These were then listed by PAS as organisations that HofN may wish to contact in future discussions.

## 3 Bringing Things Together

Participants were asked to note activities or details that they liked with a sticky dot. They were also asked to make comments on post-it notes. Sticky dot support is listed in the tables below with comments shown underneath. Detail is broken down by overarching themes of Community Wellbeing, Learning & Enterprise, Culture & Heritage.

### 3.1 Community Wellbeing

#### 3.11 Informal Space / Shared Space / Reflective Space

Idea / Activity	Indication of Support
Informal Space (General Idea)	5
Library	4
Digital Access Space	3
Youth Club – Informal Space	11
Board Games Club	1
Older people teaching younger organisation and admin skills	1

### 3.12 Food and Garden/Greenspace

Idea / Activity	Indication of Support
Food and Garden (General Idea)	2
Community Café	4
Community Meals & Healthy eating	2
Community Fridge	4
Gardening Club	4
Sensory Garden	5
Foodbank	4
All initiatives: Food budgeting, cooking classes, social activity, multicultural sharing, pot luck, breakfast club, food festival, sign post to private gardens	8
Connecting to Health and Wellbeing activity.	3
Connecting to Family, Young People and Early Years.	2

- Multigenerational growing food and cooking on a budget classes. Sharing knowledge / cultural heritage.
- ASDA's Fighting Hunger Creating Change programme – Usable waste produce provided to community groups

### 3.13 Health & Wellbeing

Idea / Activity	Indication of Support
Exercise and fitness centre	11
Dementia Groups as Users	1
Counselling/Surgery/Therapy rooms	2
Encourage service provision for all ages	1
Older generation teaching younger generation facilitation skills: leading activities, etc	3
Linking to Identity and Heritage activity (reminiscence, etc)	1

- Exercise classes only, not a gym. (x1 support noted)
- Exercise classes for all ages
- Exercise classes with mothers and young children concurrently
- Support groups for local people (+families) with palliative/life limiting conditions. St Columba's Hospice happy to help where possible (x2 support noted)
- The building is very close to the North Edinburgh Path Network (access at Lindsay Rd). There should be facilities to support and encourage cycling – cycle racks, possibly a workshop, led rides from centre, learn-to-ride in the playground, café advertised to cyclists, etc. (x1 support noted)

### 3.14 Advice and Community Awareness

Idea / Activity	Indication of Support
Community Resource / Advice	9

- The location of the centre would be perfect for Police to provide advice through any potential advice centre. It is located in the centre of the Leith Police service 'beat' area. (Author: PC Chris Smith)

### 3.2 Learning and Enterprise

#### 3.21 Enterprise & Other

Idea / Activity	Indication of Support
Enterprise (General Idea)	1
Co-working spaces	2
Women's Group	1
Recycling Centre	1
Retail / Market space (Famers Market, etc)	2
Meeting Venue and Bookable spaces	4

- Co-working spaces are great but with childcare and accessible for low incomes and with social side. Impact Hub in Birmingham is good.
- St Columba's shop for donations, with a space for volunteers to come together.

#### 3.22 Education/Life Skills

Idea / Activity	Indication of Support
Learning & Enterprise	3
Further Education Courses	10
Cooking Classes	1
Food prep	1
Employment – Skills exchange	1
Employment – Odd jobs exchange	1
Language Café	2
Environmental Awareness training	1
Marine based education programme	1

- Needs to be affordable
- Example: Acorn Exchange (Skills Midlothian)
- There are trained "money coaches" who can deliver free money management courses (<https://www.capmoney.org/>)

### 3.23 Family, Young People & Early Years

Idea / Activity	Indication of Support
Early Years Provision – Affordable childcare/crèche and soft play facilities	6
Afterschool	2
Uniformed Youth Groups	6
Child and Youth Therapy/Counselling	2
Homework Support	2

- Drop-In space for families, etc (St Columba’s Hospice)
- Under 12s Club: video games, books, quiet corner, arts and crafts (x2 support noted)

### 3.24 Craft and Makery

Idea / Activity	Indication of Support
Carpentry	3
Boat Building	3
Sewing & Knitting	3
Bike Repair	7
Co-Working Spaces	3
Initiative: Building sets and sewing costumes for the proposed performance theatre space	3

- Craft and art groups would be great (x1 support noted)

## 3.3 Culture & Heritage

### 3.31 Arts

Idea / Activity	Indication of Support
Arts	5
Artist Studios	5
Gallery space	1
Digital Arts Room	3
Artist in Residence	2
Art therapy	2

- Centre for craft focused arts, on the upper less accessible floors.
- Who would use this: Add “Professional Artists”.
- Writers Workshop Day/Retreat
- A Writer’s Space, writer in residence
- Supporting agencies for Writing initiative: Conan Doyle Society, Association of Walter Scott.

### 3.32 Performance & Social

Idea / Activity	Indication of Support
Theatre	26
Live Music, Singing, Dance	10
Venue hire	1
Community Cinema	6
The Welcoming type music gathering	2
Who Could Lead: Newhaven Choir	2

- Would love to see more opportunities for staging performances for the community
- Affordable rehearsal space for local musicians and bands
- Art/Music Studios/Rooms for hire would be great!
- Social Activities: I'd like there to be an opportunity to discuss climate change – in the café. Once per week, there positive ideas and worries.
- Singing group for people with dementia (x1 support noted)
- Social Activities: Community Action on dealing with Climate Change

### 3.33 Identity & Heritage

Idea / Activity	Indication of Support
Identity & Heritage	7
Newhaven Museum	6
Victorian Classroom	6
Ancestry/Genealogy research facilities	1
Artefact/Archive Handling	1
Sharing of History from Migrant Communities	1
Tourist Experiences	1
Living History Areas – recent history and stories	3
Young people to inform curating, presentation, and marketing alongside and thus gain work experience	1

- Would be great to see the museum find a new home
- How about history tours along the waterfront in conjunction with Leith and its history – Contact Leith Trust.

## 4 Summary

The results appear to show an indicative preference for:

- a youth club
- cooking related initiatives
- an exercise and fitness centre
- further education courses
- a community advice centre
- meeting rooms and bookable spaces
- early years provision
- uniformed groups
- bike repair
- theatre
- singing, music and dance
- community cinema
- museum
- Victorian classroom

Comments ranged across all groupings of activities. Within Health & Wellbeing it was suggested that only exercise be promoted not the provision of gym equipment, that classes with mothers and young children should run concurrently, that palliative support could be provided by St Columba's Hospice, and that cycling related exercise should be encouraged through courses, given the school's close proximity to the North Edinburgh Path Network.

Two police constables who attended commented that the centrality of the school in the Newhaven community would be an asset for agencies working in the area, and that services could be provided within the proposed advice centre. The need for affordable education, and spaces for hire was reiterated, alongside affordable rehearsal spaces. Support was given to the focus on arts and heritage, a dementia singing group, and it was suggested that creative writing be promoted, with a potential 'writer in residence'. Someone suggested contacting Leith Trust to establish waterfront tours, and lastly, there was support for a community forum/discussion group on climate change.



# 1.0 Appendix 1 - Board Feedback Images

**BRINGING THINGS TOGETHER**

### Culture & Heritage

- Arts**
  - Artist Studios
  - Art Room / Large Studio
  - Local arts and crafts shop
  - Gallery/Presentation space (Christmas windows, etc.)
  - Digital Arts Room
  - Initiatives: Artist in residence programme to connect with heritage studies and groups; Sculpture Workshop programme - with primary school pupils; Community Mural; Graffiti Wall / Street Art; Photography Interest Group; Art therapy.

*Handwritten note: Culture & Heritage*

### Performance & Social

- Theatre
- Live Music, Singing, Dance
- Venue Hire (Weddings, Fringe, meeting space, etc.)
- Community Cinema
- Initiatives: Community Quiz; Readings; Debating Group/Society; Conversare - Conversation led social events; Disability Group; Newhaven and Leith Community Council Venue; The Welcoming 'type music gathering; Bingo; Pie-Pint-Play.

### Identity & Heritage

- Newhaven Museum
- Victorian Classroom
- Ancestry / Genealogy research facilities
- Learning (e.g. Artefact/Archive Handling & Storage, etc.)
- Initiatives: Sharing of History from Migrant Communities, Storytelling, Reminiscence Activities, Tourist Experiences, Tour Guide apprenticeships (young adults); Living History Areas - recent history and stories.

**Who would use this?**

**Who could take the lead?**

**Potential Partners**

**How could it be funded?**

**What are the physical/space requirements?**

**How will this activity be intergenerational?**

**Relationship to Other Activities**

**Who would use this?**

**Who could take the lead?**

**Potential Partners**

**How could it be funded?**

**What are the physical/space requirements?**

**How will this activity be intergenerational?**

**Relationship to Other Activities**

**Who would use this?**

**Who could take the lead?**

**Potential Partners**

**How could it be funded?**

**What are the physical/space requirements?**

**How will this activity be intergenerational?**

**Relationship to Other Activities**

### What do you think?

*Handwritten notes:*

- Would love to see more apps for artists performing for the community
- Would be great to see the museum find a new home.
- Writers workshop day/retreat
- How about having a workshop along the waterfront in conjunction with Leith & its history @Content Leith Trust
- Art / Music Studios / Rooms for hire would be great!
- Community Action on dealing with climate change.
- Writing: Conan Doyle Society (Edinburgh based) Allocation of water dist
- A writers space - with an audience?

*Handwritten note: Consider for craft focused arts, upper, less accessibility plans*

*Handwritten note: ST COLMAN'S HOUSE*

the heart of new haven

New To St  
Columba's

## Learning and Enterprise

### Education/Life Skills

- Further Education courses - Short courses, night courses, advocacy training, languages, environment and ecology, seafaring / navigation, book binding, animal training and welfare, Cooking class families and food preparation, etc.
- Employment Forum - e.g. skills exchange, odd jobs exchange, promotion of employment opportunities for disadvantaged people, Jobs Fair, etc.
- Initiatives: Language Café - an informal setting where native speakers may share knowledge; Environmental Awareness with focus on coastal communities; maritime/marine based education program.

## BRINGING THINGS TOGETHER

### Family, Young People & Early Years

- Early Years Provision - Affordable childcare/creche and soft play facilities
- Afterschool club
- Uniformed youth groups - Scouts, cubs, brownies, guides, cadets, etc
- Family support drop in with people like pastoral care, safe families, home for good, kinship carers, young mum's training, etc
- Child and Youth Therapy / Counselling
- Homework Support

### Craft and Makery

- Carpentry
- Boat Building
- Sewing & Knitting
- Bike Repair
- Co-Working Spaces
- Initiatives: Building sets and sewing costumes for the proposed Performance Theatre space.

**Who would use this?**

Local residents; Older generations; Newcomers; Job seekers; Employers and Local Businesses.

**Who could take the lead?**

University of Edinburgh; Ed Council (Lifelong Learning); Lead Volunteers

**Potential Partners**

Local Businesses; Colleges; Schools, Universities; Sikh Sanjog

**How could it be funded?**

Grant Funding; Self-funded

**What are the physical/space requirements?**

- Small rooms
- Large rooms
- Accessibility for wheelchair users and disabled

**How will this activity be intergenerational?**

- Older generation passing knowledge to younger generation (life skills, languages, subject specific knowledge, etc).
- Younger generation passing knowledge to older generation (digital skills, climate change awareness, etc).
- All generations learning communication and interpersonal skills.

**Relationship to Other Activities**

- Identity & Heritage - Link to language and culture.
- Arts - Overlap between learning occurring in art practices.
- Health & Wellbeing - Supporting activity for mental wellbeing.

**Who would use this?**

Local residents; Families; School pupils;

**Who could take the lead?**

Ed Council (Lifelong Learning); Daddy Daycare; Lead Volunteers; After School Clubs; Citadel Centre; Multi Cultural Family Base; North Edinburgh Child Care

**Potential Partners**

Local Schools; Local Care Homes; Quay Housing Assoc; Goosander Res Assoc; Rock Trust; Blackthorn Trust; Sikh Sanjog.

**How could it be funded?**

Self-funded; Grant Funded (Robertson Trust, etc)

**What are the physical/space requirements?**

- Large Rooms
- Small Rooms (with water provision)
- Toilet & Kitchen Facilities
- Adjoining Outdoor Area

**How will this activity be intergenerational?**

- Older generation participating/volunteering as overseers (play activities, etc).
- Older generation acting as mentors to young people (homework, etc.).

**Relationship to Other Activities**

- Health & Wellbeing - Supporting activity/service for mental wellbeing.

**Who would use this?**

Individuals and residents, community groups; those interested in an ethos of reusing and recycling, start-up companies.

**Who could take the lead?**

Newhaven Church Children; Youthworkers; Men's Shed; Changeworks; Mentors; Volunteers; Coastal Rowers; Edinburgh Sculpture Workshop

**Potential Partners**

Schools, Care Homes, Resident Groups, Communities of Interest.

**How could it be funded?**

Grant funding; sales of made goods; crowd-source funding by project.

**What are the physical/space requirements?**

- Large workshop space
- Safe storage for tools & equipment (repair tools; sewing machines; power tools)
- Small Room (knitting, etc.)
- Work benches
- Potential cooking space
- Accessible for participants

**How will this activity be intergenerational?**

- Share skills between young and old, specifically in the production and repair of items and things.
- Naturally-shared learning. Actively engage with younger generation by offering skill related to their desired learning.

**Relationship to Other Activities**

- Performance - Costume & Set Production.
- Museum - Heritage Craft.
- Art Studios - Teaching Space.
- Health & Wellbeing - Supporting activity for mental wellbeing.

Acorn Exchange  
(skills - limitation?)  
you think?

Craft & Art  
groups would  
be great.  
- 1.1.15.15.15.15



haven

happy to  
- 1.1.15.15.15.15

COLUMBA'S HOSPICE

## BRINGING THINGS TOGETHER

### Community Wellbeing

- Advice & Community Awareness**
- Community Resource and Advice
  - Citizens Advice Bureau
  - Initiatives: Tourist and Newcomer Advice (Where to get certain facilities - where are the toilets / ATMs / shops internet cafe; links to health & wellbeing / walkable routes; cruise traffic just to sit / facilities); Recycling days / 'Bucket Days'; A 'welcome club'; development of a digital app for tourists.

### Enterprise & Other

- Co-working spaces - workshops and studios, start up business units, etc
- Women's Group
- Credit Union Bank
- Light Industry Space - Microbrewery / Gin Distillery, etc
- Retail - Various
- Recycling Centre
- Retail/Market Space - Farmers' market, car boot sales, etc
- Accommodation - Houses or a Hotel
- Meeting venue and bookable spaces
- Old Folks home
- New marina

### Informal Space / Shared Space / Reflective Space

- Library (free web access/PCs, toy library, jigsaw exchange)
- Place to study, online resource, etc.
- Digital Access Space with learning provision
- Permanent quiet/reflective space
- Youth Club / Teenage Space - Informal space (e.g. place to chat, video games, etc)
- Initiatives: Board Games Club - Chess, etc; Literary Society

### What do you think?

There are trained "money coaches" who can deliver free money management courses. See www.CAP.org.uk

Great idea! This would also be a good base for other things like...  
R. Amy Smith  
Leah Alice Smith

CO WORKING SPACES ARE GREAT - BUT WITH CHILD CARE + ACCESSIBLE FOR LOW INCOMES + WITH SOCIAL SIDE IMPACT THIS IN BIRMINGHAM IS GOOD

Why provide... in the...  
M. Smith

**Who would use this?** Newcomers to the area; cruise ship passengers; local residents, general tourists.

**Who could take the lead?** Paid staff member; Volunteers (Young & Old); Edinburgh Council (Lifelong Learning);

**Potential Partners** NHS; Edinburgh Council; Citizens Advice Bureau; Schools; CruiseForth; St Columba's Hospice; Visit Edinburgh; Porto and Fi; Milk @ ESW

**How could it be funded?** Grant (money); Visit Scotland; Edinburgh Council - grant money; Leith Community Council.

**What are the physical/space requirements?** Front door / shop front for info hub  
Lindsay Road access, small office.

**How will this activity be intergenerational?** Older generation teaching younger generation (Apprenticeship, Duke of Ed Award, etc)  
Advice from all generations.  
Younger generation helping with marketing, social media, etc.

**Relationship to Other Activities** Performance - Signpost to performance activities.  
Food & Food Production - Link tourists and others to cafe for use.  
Health & Wellbeing - Direct to service provision.  
Identity & Heritage - Link to culture and heritage activities (trail, etc.).  
Utilise young tour guides initiative.

**Who would use this?** Local residents; Customers;

**Who could take the lead?** Local volunteers, Entrepreneurs

**Potential Partners** Local Businesses; Generations Together

**How could it be funded?** Self-Funded; Grant Funding (LEADER, etc)

**What are the physical/space requirements?** Small Rooms  
Large Rooms  
Outdoor area

**How will this activity be intergenerational?** Older and younger generations working together.  
Apprenticeships for younger generations

**Relationship to Other Activities** Education & Life skills - Employment opportunities  
Health & Wellbeing - Potential referral partner  
Food & Garden/Greenspace - Link to sale of produce. Share ingredients if food related.

**Who would use this?** Local residents; Young People; Older Generation; Care Homes; Community groups; Families

**Who could take the lead?** Local volunteers

**Potential Partners** City Library  
Grant Funding

**How could it be funded?** Small Room  
Large Room

**What are the physical/space requirements?** Young people could teach older generation digital access skills.  
Older people could teach younger generation organisation and administration skills.

**How will this activity be intergenerational?** Younger generation could learn communication skills through book reading to all generations.

**Relationship to Other Activities** Health & Wellbeing - Supporting activity/space for mental wellbeing.  
Heritage & Identity - Act as a resource for written material. Could also become a quiet space for studying history of area.



Support groups for local people (tourists) with disabilities / life limiting conditions  
St Columba's Hospice happy to help where possible

Right on the middle of police but Leith makes it difficult for advice centre - police

The building is very close to the North Edinburgh Police Station (Area 2, Leith W) - would be a good location to support and encourage people to cycle / walk / use public transport, led ride - for long term trials in the playground, also adjacent to gardens etc.

ST COLUMBA'S HOSPICE

## Community Wellbeing



### Food and Garden/Greenspace

- Community Café / Community Meals (healthy eating)
- Community Fridge
- Gardening Club & Greenspace / Sensory Garden
- Foodbank
- Initiatives: Food Budgeting; Cooking Classes; Nutritional Courses; Social Activity for older groups (tea & scones gathering and whist drives, etc); Multicultural sharing (cooking, etc); Breakfast club (for pupils); Pot Luck dinners; Newhaven Food Festival; signpost to private gardens to share.

## BRINGING THINGS TOGETHER



### Health & Wellbeing

- Exercise and fitness centre - gym equipment, spa, trampoline, sports pitch, pool, external climbing wall, outdoor table tennis, trampoline, all weather pitch, yoga, pilates, Zumba, traditional movement skills, indoor golf, etc
- Public Health Hub: Provision and Support - drug treatment, support groups, mental health, family, domestic abuse, art therapy, campaigns - smoking, etc
- Temporary Accommodation for Homeless
- Animal Therapy / Petting Zoo
- Sensory Facilities
- Prayer Facilities

## What do you think?

**Who would use this?** Local residents; Older Generation; Care home residents; Families; Tourists; School pupils

**Who could take the lead?** Local volunteers

**Potential Partners** Multicultural Family Base; Edinburgh Council (Lifelong Learning); Royal Botanic Garden; Pilmey Development Project

**How could it be funded?** Grant Funding (Trussell Trust, etc); Self-funded (sale of food, etc).

**What are the physical/space requirements?**

- Kitchen Facilities
- Large room with seating
- Garden, storage cupboard & water source (Tools, etc)
- Greenspace

**How will this activity be intergenerational?**

- Older generation teaching different generations gardening or cooking skills.
- Younger generation helping different generations with preparation of food, or garden.

**Relationship to Other Activities**

- Health & Wellbeing - Supporting activity for mental wellbeing.
- Performance - Café could support events.
- Family, Young People and Early Years - Activities for family and young people.

**Who would use this?** Local residents; Specific needs individuals; Dementia Groups; Care Home residents.

**Who could take the lead?** Edinburgh Leisure; Local Volunteers; NHS; City of Edinburgh Council (Lifelong Learning); Multi-Cultural Family Base; Pilmey Development Project; Local Care Homes

**Potential Partners** Schools; NHS (Referrals - GP Surgery, etc); Blackthorn Trust.

**How could it be funded?** NHS; Grant Funding;

**What are the physical/space requirements?**

- Outdoor equipment
- Large room for exercise/movement classes
- Counselling/Surgery/Therapy rooms
- Small Room
- Small rooms/accommodation for homeless in the area

**How will this activity be intergenerational?**

- Encourage service provision for all ages
- Older generation teaching younger generation facilitation skills; leading activities, etc.

**Relationship to Other Activities**

- Advice - Provide services.
- Family, Youth & Early Years - Provide services.
- Craft & Makery - Signpost/refer to activity.
- Arts - Signpost/refer to activity.
- Identity & Heritage - Link with activities such as reminiscence, etc.

Exercise classes only, not a sign!

Lighting Hanger, creating change Programme. Use of waste public provided to Community groups

It would be great to have operational skills of cooking skills!

My school name is victor Palmsey School Thankyou

SPACE for ST COLUMBA'S HOSPICE RES - 100 SQM FOR 2 MONTHS - A SPACE FOR VOLUNTEERS TO HOLD THEIR MEETINGS - 100 SQM FOR 2 MONTHS

EXERCISE CLASSES FOR ALL AGES!

Exercise classes with mothers and young children concurrently

Multi generational young food & cooking on a budget classes sharing knowledge/cultural heritage

the heart of new haven

Libfarr

# Heart of Newhaven – Survey (15/7/19 - 29/7/19)

## 1 Overview

An online survey was conducted by PAS on behalf of the Heart of Newhaven (HofN) between 15 and 29 July 2019. The purpose of this survey was to determine what a Multigenerational Centre could provide for the community of Newhaven, giving respondents an opportunity to provide detail on who would be involved in activities, what physical requirements may be needed, and how they could be delivered. The survey also asked individuals if they would be willing to give their own time to support the delivery of the proposal or activities run within it.

## 2 Methodology and Demographics

This online survey was distributed to a list of interested parties held by the HofN community group, promoted on the HofN Website, Facebook and through their Twitter account, and was shared with individuals being surveyed by PAS. Respondents were also encouraged to send the link to other interested parties, encouraging snowball sampling.

In total the survey was completed 249 times. Of those that responded 93% were individuals and 7% were representatives of organisations. The response rate across different age groups suggested a fairly consistent rate of response from those aged 35+ - see Fig. 1. The geographical representation suggested that most respondents lived in either EH5 (22%) or EH6 (67%) – see Fig 2.

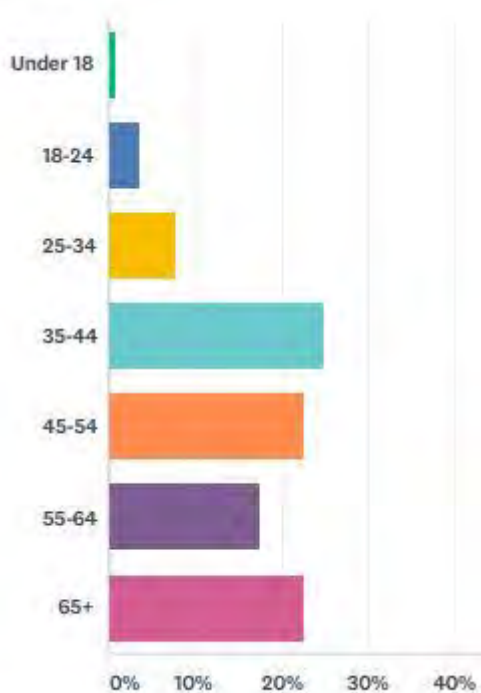


Fig 1. Heart of Newhaven - Age Group Representation

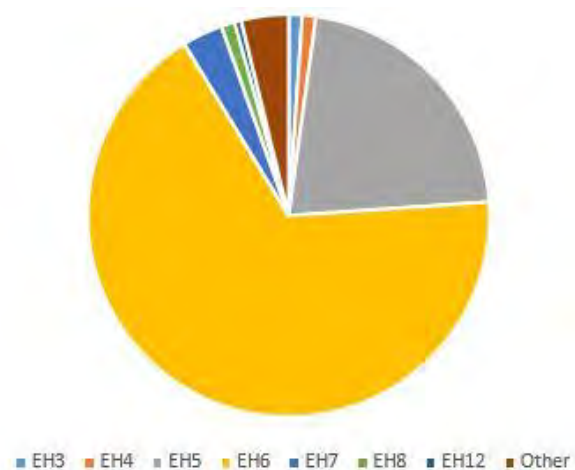


Fig 2. Heart of Newhaven – Area Representation

## 3 Key Findings

The survey was broken down into four main sections. Firstly respondents were asked the general question as to what a multigenerational centre could provide for Newhaven, then

they were asked to provide more detail about one or more ideas that they or others had suggested. A list of existing ideas was provided in the survey. Lastly, they were asked if they knew of any potential funders for the proposal, and if they would be willing to volunteer time or resources to the proposal.

### **3.1 What could a Multigenerational Centre provide for Newhaven?**

There appeared to be consensus on what a Multigenerational Centre could provide across a number of key areas:

- The new centre should be a hub/focal point for the community where everyone is welcome - the term 'family' was used by some respondents. The focus was not only on bringing together all age groups but also on being diverse and inclusive regarding different ethnic and cultural backgrounds. Three people highlighted the need to be generally accessible to everyone, mentioning disabled people, the LGBT+ community, and individuals with substance misuse issues. The need to accommodate families was also raised, alongside the centre being dog friendly.
- Educational and learning activities were suggested, where skills and experiences can be shared, alongside exercise and art activities of different forms.
- The centre needed to promote health and wellbeing and function as a safe place, where people can come together and support each other by offering a large variety of activities. Addressing wellbeing, some suggested a focus on combating the observed isolation and loneliness in the area, helping the elderly, whilst others wished for a child friendly hub. Many argued that getting together younger and older people would be mutually beneficial and directly supported the idea of intergenerational activity.
- In support of heritage and culture, creating a sense of belonging and enhancing the community spirit was also mentioned, often alongside the opportunity to conserve the history of the Newhaven area.

Lastly, several issues were raised in response to this first question, namely volunteer capacity in the community, the potential for activities to conflict with each other, where some may be quieter or louder in nature, and whether the large size of the building would affect the community centre's effectiveness.

## **3.2 Activities and Proposals**

### **3.21 Proposals**

Respondents were asked to provide more detail on a new or existing proposed activity for the centre. These are listed below.

#### **Heritage**

Establishing a museum and a Victorian style classroom were mentioned regularly, eleven times and seven times respectively, due to Newhaven's historical past. Some respondents envisaged them both working together, as well as introducing tours conducted by all ages, where young adults could do internships. Some suggested attracting tourists coming from the visiting cruise ships. Other ideas in relation to heritage were:

- A local art and merchandise shop could be attached to the museum.

- Introduce 'living history' areas which would include recent history and stories.
- Teaching and learning activities, where the older generation could teach the new generation.
- Ancestry research.
- Reminiscence activities, particularly with the older generation.

Respondents suggested that this proposal would require one classroom, one museum room, a corridor for hanging coats and some storage space. It was proposed that key partners could include the History of Education Centre and Newhaven Heritage Centre, and that it could be volunteer led. In terms of funding the museum proposal, it was suggested that a small fee could be charged to each visitor. The benefit to the community was indicated by a number of respondents, that it would allow new residents to understand the area's past, improve the wellbeing of the elderly, and that it would assist young adults in gaining work experience. One person also explained why a Victorian style classroom could benefit all ages:

*'This idea is intergenerational in that it allows children (and others) to engage meaningfully with the experiences of the past. Some of the educational methods and tools will be similar to those used with their grandparents or in some cases parents. Furthermore, the classroom could be used for nostalgia visits by older people, or for interested adults.'*

### **Community Choir & Music**

A community choir and a music group were mentioned, and it was suggested that they were good for mental health and suitable for different age groups and abilities. Both of these could be made accessible for those with dementia or stroke difficulties. In terms of requirements, it would require a rehearsal room and some trained singers and conductors. One respondent explained that the current choir is funded by members and that the choir could attract more people if located in a larger community centre rather than being isolated in a different building.

### **Performance and Moving Arts**

An entertainment room, open mic night, cinema club and a theatre for children were suggested. These would require a semi-large room, along with storage spaces for costumes and props. It was suggested that the Forth Children's Theatre could be a key partner in the theatre initiative, and that they would run activities with all generations. Lastly it was suggested that entertainment events could be used to fundraise for this community project, and that they could involve all generations.

### **Library**

Five respondents liked the idea of a library, as an outpost of the City Library, with one person highlighting the need for internet access and volunteers to assist people accessing services. One respondent suggested this could be in the form of boxes of books, which could be maintained by charging a modest membership fee. Associated with this was the proposal for a toy library, which could run on a membership basis with low or no fees depending on income, and a jigsaw exchange which could have a £5 joining fee along with the requirement to donate a jigsaw. After that a jigsaw could be borrowed for £1 and returned when completed.

## **Visual Arts and Craft**

Some respondents argued that affordable work and meeting spaces, particularly for artists and start-ups, are in short supply in the Leith and Newhaven area and they would welcome a space to work and share ideas. This would require art desks and large shared tables, natural light, a sink and wall space. One respondent suggested that a key partner could be Edinburgh Sculpture Workshop (ESW). In terms of implementing such an idea, it could be based on yearly rental agreements, asking for £100-145 a month. It was also suggested that artists could lead workshops for the public. Lastly, it was suggested that an artist in residence programme could be introduced, with a community engagement remit, to coordinate activities with community groups.

Related to the above, 11 people asked for art and craft workshops of all kinds, such as knitting, poetry, music and dance. One person explained an all age knitting workshop would require a kettle and a simple room set up. The hiring of the room could again be funded by members. If other crafts also occur weekly in this room then an end of year crafts sale could be organised. According to the respondent such workshops would be fun and could run any time of the day. Lastly, a concern was raised about one particular existing idea for an outdoor mural, that activities might encourage further graffiti in public.

It was suggested that an area be set aside to sell local arts and crafts, which would be linked to the area of heritage, and the idea of attracting tourists from the visiting cruise ships. Furthermore this could be used as a source of revenue, with a small amount of the takings being set aside, to help fund further intergenerational activities at the centre.

## **Light Industry & Offices/Business/Venue Hire**

Venue hire was suggested by a number of individuals (ten times) in various forms such as small and large rooms (e.g. the hall), to generate income and revenue for HofN. Co-working was suggested, where residents may be given practical experiences leading to employment opportunities. Whilst some people supported venue hire for voluntary groups, local services such as counselling, birthdays and private parties, one person was concerned about private venue hires and the potential impact on neighbouring residents.

In terms of commercial or light industry enterprise, a distillery or microbrewery was suggested given it would encourage visitors and benefit other local business, and potentially be a revenue stream for the centre. A farmers market was also suggested, being run in the outdoor space surrounding the school. Lastly, a Credit Union bank was suggested to encourage saving and low-cost loans to assist those in the community with limited access to credit.

## **Food and Food Production**

A community café was mentioned often (nine times). Similar ideas such as food socials, pot-luck dinners, and a community kitchen were also mentioned alongside cooking classes (six times). Food socials were often interlinked with board game socials. A community fridge was also suggested, along with a food bank, where food could be donated and taken by people in need, mention was made of the Trussell Trust as a point of guidance. This would require someone to check the food regularly. One respondent added that food waste from local supermarkets could be collected which could be used to run the cooking classes. One



person suggested organising a Newhaven Food Festival where local restaurants get together to attract visitors to the area, getting the local Hospice involved.

Benefits and principles highlighted for the café, food socials and cooking classes were:

- Improved budgeting and cooking skills for individuals
- Improved healthy eating in the community
- Accessible for all ages
- Fight loneliness
- Cooked meals can be given away for free to people in need and/or suggest donations

A community garden and/or green space was mentioned by five people, which would benefit those who do not have access to a garden. This would be beneficial to different generations, overall mental health and would be an opportunity to share gardening knowledge. It would further promote biodiversity within the area. One respondent argued that the current playground could be transformed into a garden. Furthermore it was suggested that the produce could be used in the community café. Another respondent added that the centre could signpost or coordinate people to share their private gardens with others who do not own gardens.

### **Childcare and Youth Activities**

Childcare and crèche provision was mentioned by a number of respondents (eight times), highlighting the shortage in the area and the general need for it to be affordable. Youth clubs, particularly Scouts, were regularly mentioned, with it being argued that other than sports clubs there were limited activities for young people. It was suggested that youth clubs could fight boredom, social isolation and crime. The Robertson Trust and Rock Trust could be considered for assistance.

It was suggested that childcare could involve the elderly to tackle loneliness and anxiety, with the exchange of education and life skills being mentioned fairly often. The older generation could teach the younger generation regarding relationships advice, domestic abuse, mental and physical health and coping mechanisms. The Blackthorn Trust was mentioned as an example where different exercises are offered to improve mental health.

### **Exercise and Physical Activity**

A number of people mentioned exercise classes such as Yoga, Pilates, Badminton and Zumba. One individual suggested that classes can be organised to cater for all abilities and would need space to fit approximately 20 people, charging £6 per person. Similarly others argued that most exercises can be adapted to different abilities and that a small fee could be charged. The Keep Moving Masham initiative in Yorkshire was suggested as an example of intergenerational exercise.

Another respondent went into detail regarding traditional movement skills which can help to increase confidence and self-esteem in children but also allow parents to gain skills they may have missed out on and keep traditions alive. This respondent was open to volunteer and listed the following requirements for such classes:

*'a clear space with a wall that balls can be thrown against, chairs, a balance beam and simple equipment like cat's cradle strings, tennis balls etc. A minimal fee could be charged for the use of the equipment'.*

### **Education, Language and Inclusion**

Four respondents mentioned language lessons as an activity which could be attractive to people of different age groups, with one suggesting the idea of a 'Language Café', which would be social in nature. Others suggested that promoting the learning of languages could help those new to the community if English is not their first language.

Education, and the potential for evening classes, was also mentioned by respondents as a way to 'encourage all ages to come out and tackle a new hobby or skill'. It was suggested that this could be funded by the council and would require a classroom. Subject areas were also suggested, these included:

- the promotion of seaside activities, and Maritime and Marine based education, potentially looking at coastal community resilience
- Carbon footprint awareness raising
- Life Skills training

### **Workshop & Tool Library**

Three respondents highlighted men's mental health issues and the idea of creating a Men's Shed facility to support this. A similar social group existed in the 1960s and 70s, operating out of Starbank Park. An active tool library was also mentioned with experienced DIY-ers helping others.

### **Additional Ideas**

Other ideas suggested were:

- Women's Group
- Support for those affected by domestic abuse
- Sensory Room for those with disabilities
- Citizens Advice Bureau
- Information on what's on in the area
- Family support drop in, with sensitive pastoral care
- Debate forum
- Quiet reflective space and a conversation space

### **3.22 Broader Considerations**

Within this section, some considerations were highlighted when planning for the centre:

- The need to promote widely, particularly to audiences who have limited social contact.
- A room rota would be a useful way to coordinate the many activities proposed for the centre.
- Need to ensure that leadership and the focus of the proposal involves carers/parents, the disabled/less mobile, BME backgrounds, young mums, people who identify as LGBT+, those with poor mental health.
- Need to make sure that some of the space is informal, to allow members of the community to drop in and socialise.

- Need to consider running education and classes in the evening and on the weekend so they are accessible, and need to keep the centre open at all times of the day.
- Need to ensure activities were secular where possible, particularly if young children were involved.
- Need to ensure families are accommodated in the centre.
- The potential impact on neighbouring residents if activities are run in the evening.
- Perceived lack of funding for existing activities.
- Need to ensure that the space is accessible to the disabled and wheelchair users.
- Need to consider alcohol provision at the centre, particularly if it may impact on the perception of it being a safe space.
- Ongoing maintenance of the building should be considered.
- Need to be aware of participants having to personally invest money.
- The potential for a 3<sup>rd</sup> sector consortium or stakeholder partnerships to help develop intergenerational social activities.
- The need for the centre to promote multicultural learning, particularly given the increasing diversity of the area.
- A general need to ensure that the centre's ambitions meet health and wellbeing priorities from the NE Locality Improvement Plan, i.e. social isolation and loneliness, increasing access to free/low cost activities, and improving access to health and wellbeing support, services, activities and opportunities.

### 3.3 Potential Funders

Sixteen people responded to this question with six people mentioning the National Lottery Heritage Fund as a potential funder. Other funding opportunities mentioned were:

- Big Lottery
- Creative Scotland
- Hope Scott
- Russell Trust
- Leith Chooses, Leith Decides
- Leith Rotary
- NHS Lothian
- The City of Edinburgh Council
- Art Auction/exhibition to raise money
- Set up charity with Amazon Smile
- Crowd funding and private donations
- Selling community garden produce
- Local advertisement

In addition to the ideas listed above, one individual donated several paintings directly to help fund the proposal. Lastly, in terms of things to consider when approaching funders, one person suggested the need to check potential funder requirements carefully, to avoid potential conflict with the aim or vision of the proposed centre. It was also suggested that any funding and promotion should try to remain as local as possible, to keep it relevant.

### 3.4 Volunteering

In total 64 individuals suggested that they would be willing to volunteer time or resources to make any of the ideas or proposals happen. These details have been recorded by the Heart of Newhaven team.

## 1.0 Appendix

The following table summarises the number of times specific activities or proposals were suggested in the 'Ideas' section of the survey. This should be seen as indicative of preference and should be used in combination with other engagement responses. The completion of the survey was undertaken with an element of trust (that respondents will only complete it once).

Activities	Frequency
Art and Craft Workshops	11
Museum	11
Venue to Hire and Share	9
Community Café	9
Childcare & Creche	8
Victorian Class Room	7
Cooking	6
Library	5
Scouts and Youth Groups	5
Education	5
Exercise Classes	5
Community Choir	5
Community Garden / Green Space	5
Yoga	4
Language Lessons	4
Men's Shed	3
Film Club and Cinema	3
Food funded via donations	3
Children's Theatre	3
Badminton	2
Co-Working Spaces	2
Zumba	1
Games Afternoon	1
Selling Local Arts and Crafts	1
Book Club	1
Family Support	1
Advice Service	1
Debate Forum	1
Citizens Advice Bureau	1
Credit Union Bank	1
Graffiti	1
Quiet Reflective Space	1
Seaside Activities	1
Women's Group	1
Entertainment space	1
Local Arts Shop	1
Jigsaw Exchange	1
Board games with food./drink	1
Car Boot Sale	1
Toy Library	1
Open Mic Night	1



Welcome to this exhibition presented by the Heart of Newhaven. The next nine boards provide an update on how we are exploring your ideas for a centre for all generations in Victoria Primary School, after the school is relocated to Western Harbour. The boards set out the steps that have already been taken to engage with the local community and key stakeholders, indicating how the results of this engagement have led to the idea of a possible multigenerational centre. In doing so it highlights how community ideas for future activities in the building could be realised through the establishment of activity hubs that bring all generations together.

## The story so far

In June 2017 City of Edinburgh Council's (CEC) proposal that Victoria Primary School in Newhaven (VPS) vacate its existing site, and relocate to a new building in Western Harbour, a newly developed part of Newhaven, was agreed by CEC following consultation with parents and the local community.

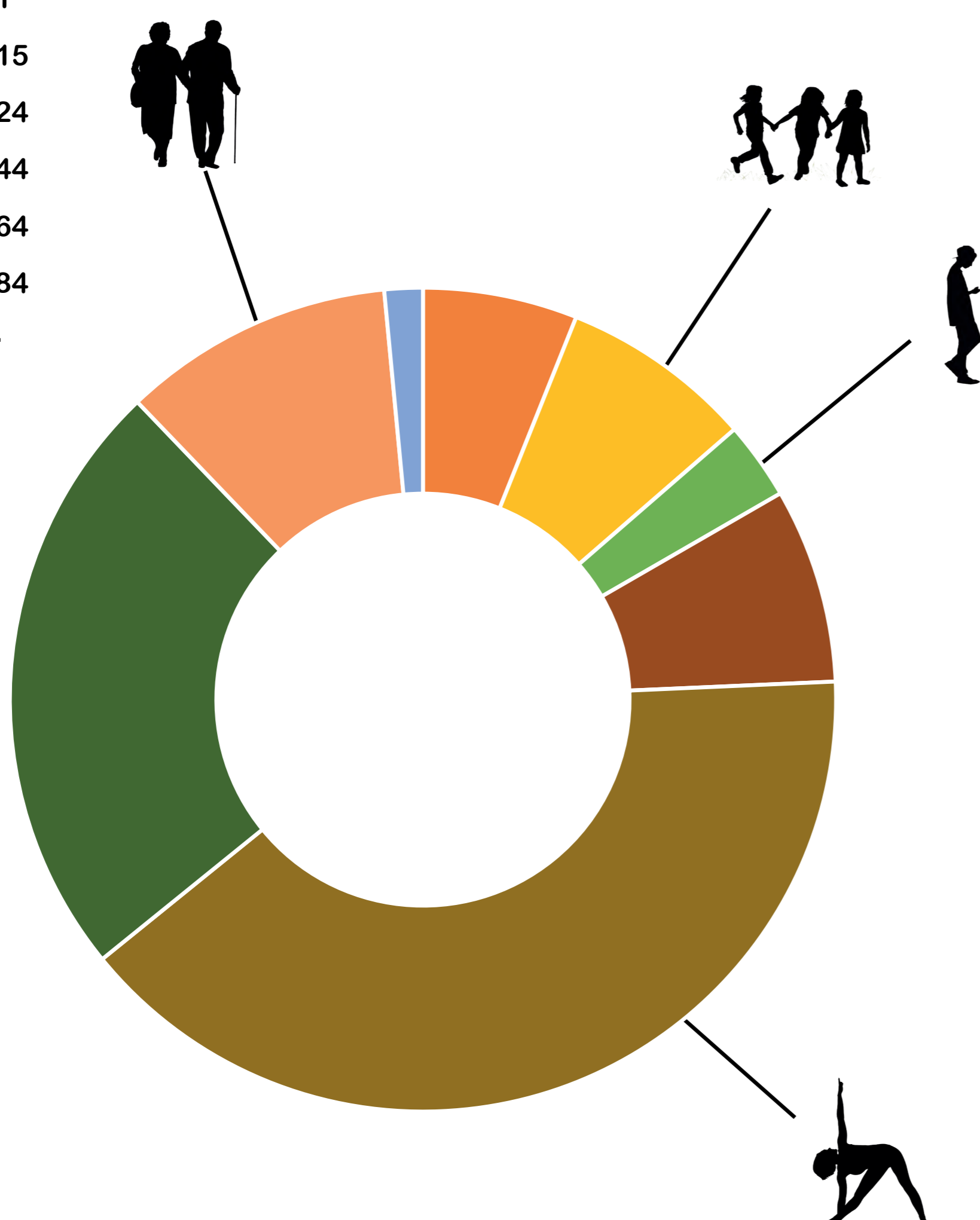
The outcomes of the consultation report noted that council officers will continue to provide support to community groups wishing to consider community ownership of the existing Victoria Primary School building through the Community Asset Transfer process.

## Who we are

The Heart of Newhaven Community (HoNC) was constituted in January 2019 as an unincorporated association. We have an Executive Group of three people and a wider Steering Group. We have a growing membership of around 400, representing a wide range of interested parties within the Newhaven community.

### Leith and Forth: Population Age\*

- Age: 0-4
- Age: 5-11
- Age: 12-15
- Age: 16-24
- Age: 25-44
- Age: 45-64
- Age: 65-84
- Age: 85+



The objects of the association are to work with all interested groups to develop a vision for the promotion of the community with a view to acquiring VPS as a vital community asset which will belong to the Newhaven community and to set in place the appropriate legal entity for that purpose.

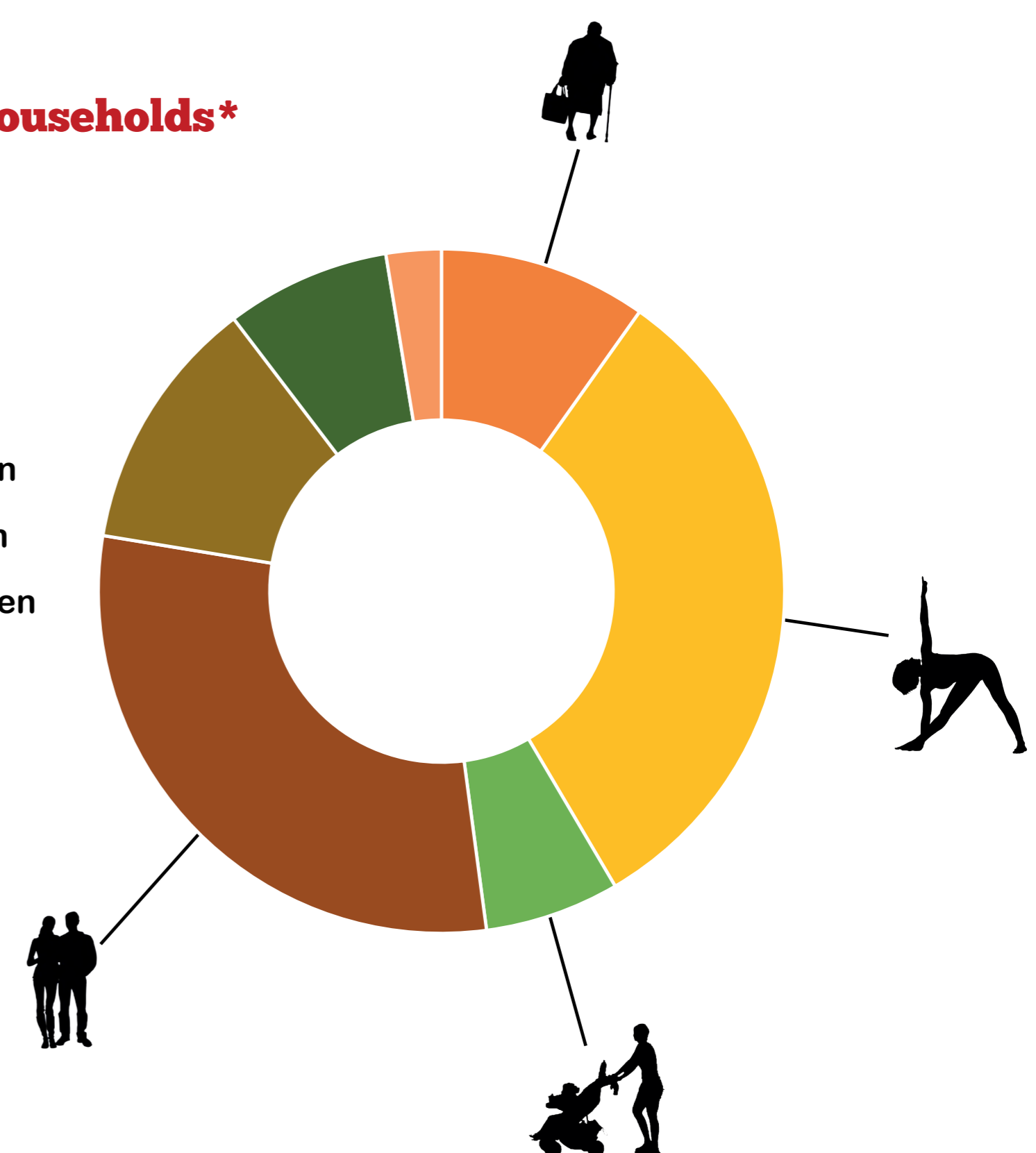
## How do we know there is a need for the community to acquire the building

Two open meetings were held in October 2018 and January 2019, both attended by over 100 people. In October 2018 those attending were asked to provide ideas on the types of activities that could occur in the building if acquired by the community. At the January meeting this 'blue sky thinking' which had been analysed was fed back as three themes with a common thread of older and younger people coming together in a variety of activities.

The Steering Group agreed that this idea should be part of a more detailed community consultation with the support of an organisation experienced in intergenerational practice and in helping individuals and community organisations to get involved in decision-making in the planning system in an impartial, open and inclusive way. Funding from the Big Lottery and the Neighbourhood Partnership enabled us to contract PAS (Planning Aid Scotland) to support us in this consultation.

### Leith and Forth: Households\*

- 1 Person: Pensioner
- 1 Person: Other
- 1 Adult, plus children
- 2 Adults, no children
- 2 Adults, plus children
- 3+ Adults, no children
- 3+ Adults, plus children



\* Data from National Records for Scotland 2017 mid year estimates

# HOW WE'VE ENGAGED SO FAR

Public workshops were held in October 2018 and January 2019. These were well attended and at each of these events participants were asked to provide ideas on what could happen at Victoria Primary School once the children moved to their new school.

The first meeting was an opportunity for 'blue sky thinking' which appeared to show a common thread of older and younger people coming together in a variety of activities, the second meeting was used to identify the sort of activities that may occur in a new centre.

Workshops were held with the pupils from all the main schools in the area. The first workshop was held with the students from Victoria, Holy Cross and Trinity Primaries on the 18 June 2019. A second workshop was held with the pupils of Trinity Academy on 21 June 2019.

An online public survey was conducted over the period of 15 August to 29 August 2019. It was completed 249 times, with 89% of respondents being residents or representatives of organisations within the EH5 and EH6 postcode areas of Edinburgh.



HoNC has been working with PAS, the Newhaven community and stakeholders to understand how a centre focused on people of different ages and backgrounds coming together to share experiences, knowledge and skills could become a reality. Looking at the list of those we have spoken with... **Is there anyone else we should speak to?**

The following organisations have been contacted for their views on the re-use of Victoria Primary School:

1. Men of Leith Men's Shed
2. Living Memories Project
3. Pilmeny Development Project
4. Pilton Equalities Project
5. City of Edinburgh Council (Planning)
6. Victoria Primary School
7. Newhaven Church
8. NHS Lothian
9. History of Education Centre
10. Forth Children's Theatre
11. Port O'Leith Motor Boat Club
12. Coastal Rowers
13. Lifelong Learning North West (City of Edinburgh Council)
14. North Edinburgh Childcare
15. Forth Neighbourhood Partnership
16. Trinity Community Council
17. Newhaven Heritage Centre
18. Edinburgh Sculpture Workshop
19. Trinity Academy
20. After School Club (Victoria Primary)
21. Citizen Curator / Leith Creative
22. Tenants Group (Goosander Residents)
23. Cruise Forth Leith
24. Trinity House Care Home
25. Ferrylee Care Home
26. Edinburgh Leisure
27. Museums & Galleries Team (City of Edinburgh Council)
28. Multi-Cultural Family Base
29. Coburg House
30. Edinburgh Archives Team (City of Edinburgh Council)
31. Letham Park Care Home
32. Port of Leith Housing
33. NHS (North West Team)
34. Victoria Primary Parent Council & PTA
35. Newhaven Community Choir
36. Sikh Sanjog
37. Museums Galleries Scotland
38. Leith Rotary
39. Leith History Society
40. St Margaret's House - Edinburgh Palette
41. Out of the Blue
42. Contact the Elderly
43. Edinburgh College
44. University of Edinburgh
45. Visit Edinburgh
46. North Edinburgh Child Care
47. Porto and Fi
48. Milk at ESW
49. Citadel Youth Club
50. Generations Working Together
51. Royal Botanics
52. Daddy Daycare
53. Edinburgh Health and Social Care Partnership
54. St Columba's Hospice
55. Leader of City of Edinburgh Council
56. Deputy Leader of City of Edinburgh Council
57. City of Edinburgh Councillors (Forth Ward)
58. Ben MacPherson (MSP)
59. Deidre Brock (MP)
60. Newhaven and Leith Harbour Community Council
61. Community Ownership Support Service
62. Scottish Land Fund
63. Scottish Historic Buildings Trust
64. Trinity Primary
65. Holy Cross Primary



# WHAT YOU SAID YOU WANTED FROM A COMMUNITY SPACE



## COULD WE CREATE A MULTIGENERATIONAL CENTRE?

### What is a Multigenerational Centre?

Multigenerational Centres are places that promote a sense of community by offering room for everyone to come together, from young to elderly. Through opportunities for joint activities, multigenerations can help each other, learn from each other and spend time together. The interaction between generations promotes the development of everyday skills and knowledge, improves social integration and strengthens social cohesion – outside the family setting.

### What are the benefits of intergenerational activities?



# TYPE OF ACTIVITIES YOU HAVE SUGGESTED



## Performance & Social

- Forth Children's Theatre
- Creative Space with learning provision – dancing, music, art, salsa, Bollywood, belly dancing, 'The Welcoming', music gathering, photography, calm dancing, etc.
- Bookable live entertainment space (Fringe, weddings, ceilidh, etc)
  - Community Choir
- Film club / Community cinema
  - Jazz club
- Conversare – Conversation led social events
- Bookable venue space for groups

## Advice & Community Awareness

- Community Resource and Advice Centre – Information on what is on in the area, newcomers, "Community Map". education, etc.
- Citizens Advice Bureau
- Health & Wellbeing services signposting

## Health & Wellbeing

- Exercise and fitness centre – gym equipment, spa, trampoline, sports pitch, pool, external climbing wall, outdoor table tennis, trampoline, all weather pitch, yoga, pilates, Zumba, traditional movement skills, indoor golf, etc.
- Public health campaigns – smoking, etc.
  - Community support meetings.
- Public Health Hub: Provision and Support – drug treatment, support groups, mental health, family, domestic abuse, art therapy, etc.
- Temporary accommodation for homeless
  - Animal Therapy / Petting Zoo

## Informal Space / Shared Space / Reflective Space

- Library – free web access/PCs, place to study, online resource, etc.
  - Toy Library
  - Jigsaw Exchange
  - Literary Society
- Youth Club / Teenage Space – Informal space
  - Permanent quiet/reflective space
  - Board Games Club – Chess, etc. Disability Group
- Debating Group / Place for debating on different topics.
- Digital Access Space with learning provision
  - Community Quiz Events
  - Prayer facilities
  - Sensory room

## Arts

- Artist Studios
- Art Room / Large Studio
  - Community Mural
  - Graffiti Wall / Street Art
- Local arts and crafts shop
- Gallery/presentation space - Christmas windows, etc.
- Photography Interest Group
  - Digital Arts Room
- Artist in residence programme to connect with heritage studies and groups
- Sculpture Workshop programme – with primary school pupils, etc

## Culture & Heritage

Belonging, community, Newhaven village, song / work, fishing, history, connection with the sea

## Identity & Heritage

- Newhaven Museum
- Victorian Classroom
- Tour Guide Apprenticeships – School pupils, etc
- Reminiscence Activities
  - Storytelling
  - Migrant heritage (Sikh, etc)
- Ancestry / Genealogy research – Family tree searching, etc
- Artefact/Archive Handling & Storage Education
  - A base for tours for those on cruise ships and hotel to explore local heritage, including the school and local businesses

## Community Wellbeing

Socialising, mental & physical health and wellbeing, loneliness, befriending

## Food & Garden/Greenspace

- Community Café / Community Meals (healthy eating)
  - Community fridge
- Hub to signpost to private gardens to share
- Gardening Club & Greenspace / Sensory Garden
  - Foodbank
- Social Activity for older groups - tea & scones gathering and whist drives, etc.
- Multicultural sharing – cooking

## Learning and Enterprise

Affordable informal activity and learning opportunities for all ages and experiences

## Enterprise & Other

- Co-working Offices - start up business units, etc
  - Credit union bank
- Light Industry Space - Microbrewery / Gin Distillery, etc
- Retail/Market Space – Farmers' market, car boot sales, etc
- Meeting venue and bookable space, large and small – weddings, local groups
  - Old Folks home
  - New marina

## Family, Young People & Early Years

- Early Years Provision - Affordable childcare and soft play facilities
  - Breakfast club
  - Afterschool club
- Uniformed youth groups – Scouts, cubs, brownies, guides, cadets, etc.
- Family support drop in with people like pastoral care, safe families, home for good, kinship carers, young mum's training, etc.
  - Child and Youth Therapy / Counselling
  - Homework Support

## Further Education / Life Skills

- Further Education courses – Short courses, night courses, advocacy training, languages, environment and ecology, seafaring / navigation, book binding, animal training and welfare, Cooking class facilities and food preparation, etc
- Language Café – an informal setting where native speakers may share knowledge.
- Employment Forum – e.g. skills exchange, odd jobs exchange, promotion of employment opportunities for disadvantaged people, Jobs Fair, etc.

## Craft & Makery

- Boat building space with learning provision
- Furniture / Carpentry Space with learning provision
- Sewing / knitting space with learning provision
- Men's Shed: space for men to connect, converse and create – workshop, etc.
  - Knit and Natter Group
  - Tool Library
- Co-Working Studios/Workshops

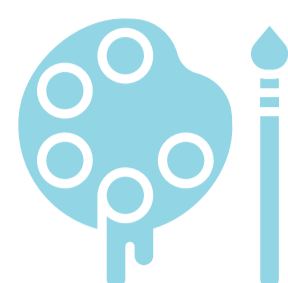




# BRINGING THINGS TOGETHER

## Culture & Heritage

### Arts



- Artist Studios
- Art Room / Large Studio
- Local arts and crafts shop
- Gallery/Presentation space (Christmas windows, etc.)
- Digital Arts Room
- Initiatives: Artist in residence programme to connect with heritage studies and groups; Sculpture Workshop programme – with primary school pupils; Community Mural; Graffiti Wall / Street Art; Photography Interest Group; Art therapy.

**Who would use this?** Local residents; Specific needs individuals; Dementia Groups; Care Home residents.

**Who could take the lead?** Coburg House; Edinburgh Sculpture Workshop; Volunteers.

**Potential Partners** Schools; Community Groups; Citizen Curator; Local Carehomes

**How could it be funded?** Self-funded through studio lease arrangements; Grant Funding (Creative Scotland)

**What are the physical/space requirements?**

- Small studios (with natural light and water supply)
- Large Central Area with Tables
- Space to sell and exhibit art works

**How will this activity be intergenerational?**

- Learning between practitioners/artists and community both young and old.
- Older generation could use space to teach younger generation how to paint, etc.
- Older generation learning communication and interpersonal skills.

**Relationship to Other Activities**

- Heritage – Informed by local heritage and culture.
- Health & Wellbeing – Supporting activity for mental wellbeing.

### Performance & Social



- Theatre
- Live Music, Singing, Dance
- Venue Hire (Weddings, Fringe, meeting space, etc)
- Community Cinema
- Initiatives: Community Quiz; Readings; Debating Group/Society; Conversare – Conversation led social events; Disability Group; Newhaven and Leith Community Council Venue; 'The Welcoming' type music gathering; Bingo; Pie-Pint-Play.

**Who would use this?** Individuals and residents, community groups (Dementia, elderly, school pupils, etc), audiences from outside the area

**Who could take the lead?** Forth Children's Theatre; Newhaven Choir

**Potential Partners** Schools, Colleges / Student networks, Communities of Interest (e.g. Choir or Folk Clubs), Volunteers, experts; Trinity & Leith CCs; Goosander Res Assoc; Pilmeny Development Project; Cruise Forth; Sikh Sanjog

**How could it be funded?** Creative Scotland; ticket sales; advertising; bar; hire; sponsorship; flexible space; link to other city theatre groups and festivals; commercial enterprise.

**What are the physical/space requirements?**

- Large Hall / Gymnasium
- Storage Areas
- Accessible for both participants and audiences

**How will this activity be intergenerational?**

- All ages to take part in theatre and performance.
- Intergenerational learning.

**Relationship to Other Activities**

- Craft & Technology Hub – Costume & Set Production
- Museum – Heritage and Culture influenced production

### Identity & Heritage



- Newhaven Museum
- Victorian Classroom
- Ancestry / Genealogy research facilities
- Learning (e.g., Artefact/Archive Handling & Storage, etc)
- Initiatives: Sharing of History from Migrant Communities, Storytelling, Reminiscence Activities, Tourist Experiences, Tour Guide apprenticeships (young adults); Living History Areas – recent history and stories.

**Who would use this?** All ages; school trips; visitors; researchers; tourists; Scottish heritage interest & genealogy; other heritage interest groups, community groups.

**Who could take the lead?** Newhaven Heritage & Newhaven History Group; History of Education Centre

**Potential Partners** General volunteers; Edinburgh Council (Museums & Galleries); Edinburgh Council (Archives Team); Women's Institute; Rotary; University of Edinburgh; Story Telling Centre; Sikh Sanjog

**How could it be funded?** Donation; ticket sales; sales of merchandise; grant funding (would need to get collection accredited for some funding) – Heritage Lottery Fund, Creative Scotland, Edinburgh Council; sponsorship.

**What are the physical/space requirements?**

- Larger classroom for museum (ground floor)
- Smaller classroom (s)
- Corridor (hanging coats, etc)
- Space for display cases
- Require independent control of heating for exhibition climate.
- Accessible, potentially ground level

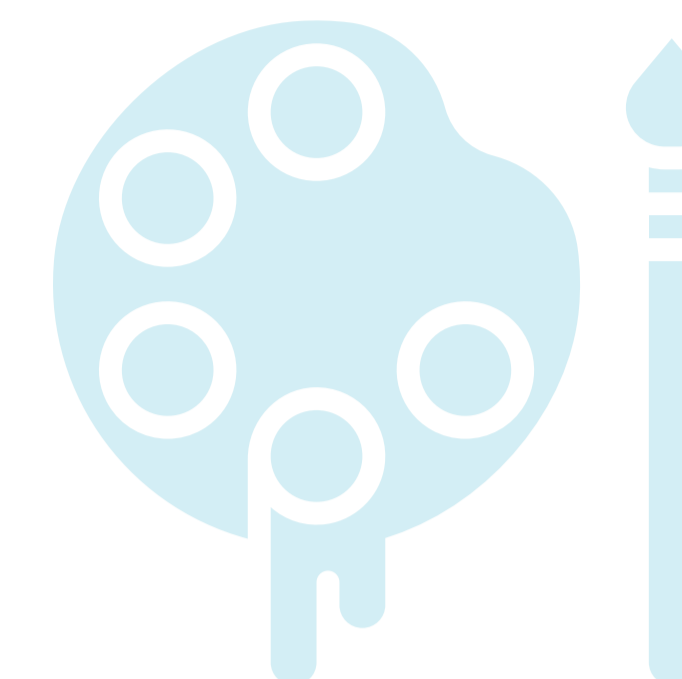
**How will this activity be intergenerational?**

- Older generations teaching younger generations and helping them research community history
- Young people to inform curating, presentation, and marketing alongside, and thus gain work experience.
- Tour Guide Apprenticeships – School pupils

**Relationship to Other Activities**

- Craft & Makery – Inform practices and projects.
- Performance – Inform types of production, songs, films, etc. Potential place to view historical films. Venue for events such as Story Telling.
- Health & Wellbeing – Supporting activity for mental wellbeing.
- Arts – Inform practices and projects, link to potential shop/gallery.

## What do you think?



# BRINGING THINGS TOGETHER

## Learning and Enterprise



### Education/Life Skills

- Further Education courses – Short courses, night courses, advocacy training, languages, environment and ecology, seafaring / navigation, book binding, animal training and welfare, Cooking class facilities and food preparation, etc.
- Employment Forum – e.g. skills exchange, odd jobs exchange, promotion of employment of opportunities for disadvantaged people, Jobs Fair, etc.
- Initiatives: Language Café – an informal setting where native speakers may share knowledge; Environmental Awareness with focus on coastal communities; maritime/marine based education program.

**Who would use this?** Local residents; Older generations; Newcomers; Job seekers; Employers and Local Businesses.

**Who could take the lead?** University of Edinburgh; Ed Council (Lifelong Learning); Lead Volunteers

**Potential Partners** Local Businesses; Colleges; Schools, Universities; Sikh Sanjog

**How could it be funded?** Grant Funding; Self-funded

**What are the physical/space requirements?**

- Small rooms
- Large rooms
- Accessibility for wheelchair users and disabled

**How will this activity be intergenerational?**

- Older generation passing knowledge to younger generation (life skills, languages, subject specific knowledge, etc).
- Younger generation passing knowledge to older generation (digital skills, climate change awareness, etc).
- All generations learning communication and interpersonal skills.

**Relationship to Other Activities**

- Identity & Heritage – Link to language and culture.
- Arts – Overlap between learning occurring in art practices.
- Health & Wellbeing – Supporting activity for mental wellbeing.



### Family, Young People & Early Years

- Early Years Provision - Affordable childcare/creche and soft play facilities
- Afterschool club
- Uniformed youth groups – Scouts, cubs, brownies, guides, cadets, etc
- Family support drop in with people like pastoral care, safe families, home for good, kinship carers, young mum's training, etc
- Child and Youth Therapy / Counselling
- Homework Support

**Who would use this?** Local residents; Families; School pupils;

**Who could take the lead?** Ed Council (Lifelong Learning); Daddy Daycare; Lead Volunteers; After School Clubs; Citadel Centre; Multi Cultural Family Base; North Edinburgh Child Care

**Potential Partners** Local Schools; Local Care Homes; Quay Housing Assoc; Goosander Res Assoc; Rock Trust; Blackthorn Trust; Sikh Sanjog.

**How could it be funded?** Self-funded; Grant Funded (Robertson Trust, etc)

**What are the physical/space requirements?**

- Large Rooms
- Small Rooms (with water provision)
- Toilet & Kitchen Facilities
- Adjoining Outdoor Area

**How will this activity be intergenerational?**

- Older generation participating/ volunteering as overseers (play activities, etc).
- Older generation acting as mentors to young people (homework, etc.).

**Relationship to Other Activities**

- Health & Wellbeing – Supporting activity/service for mental wellbeing.



### Craft and Makery

- Carpentry
- Boat Building
- Sewing & Knitting
- Bike Repair
- Co-Working Spaces
- Initiatives: Building sets and sewing costumes for the proposed Performance Theatre space.

**Who would use this?** Individuals and residents, community groups; those interested in an ethos of reusing and recycling, start-up companies.

**Who could take the lead?** Newhaven Church Children; Youthworkers; Men's Shed; Changeworks. Mentors, Volunteers; Coastal Rowers; Edinburgh Sculpture Workshop.

**Potential Partners** Schools, Care Homes, Resident Groups, Communities of Interest.

**How could it be funded?** Grant funding; sales of made goods; crowd-source funding by project.

**What are the physical/space requirements?**

- Large workshop space
- Safe storage for tools & equipment (repair tools; sewing machines; power tools)
- Small Room (knitting, etc.)
- Work benches
- Potential cooking space
- Accessible for participants

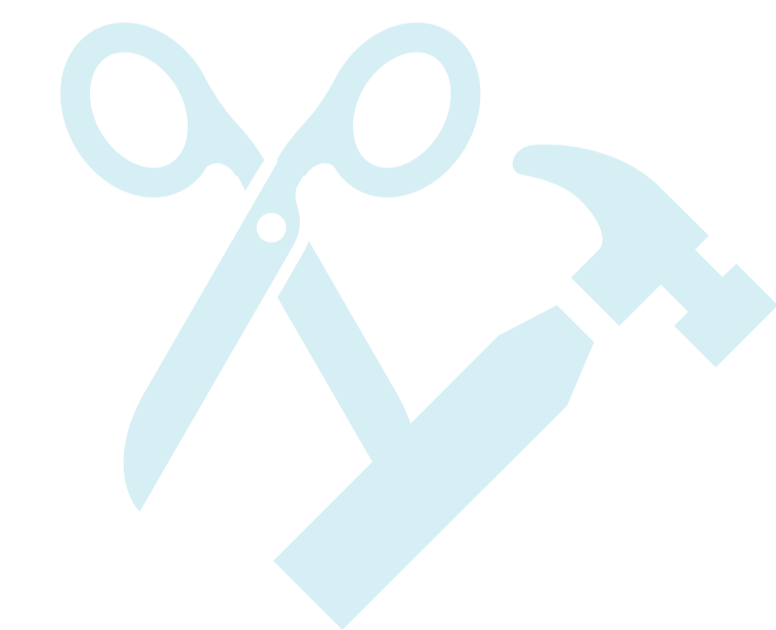
**How will this activity be intergenerational?**

- Share skills between young and old, specifically in the production and repair of items and things.
- Naturally-shared learning. Actively engage with younger generation by offering skill related to their desired learning.

**Relationship to Other Activities**

- Performance – Costume & Set Production.
- Museum – Heritage Craft.
- Art Studios – Teaching Space.
- Health & Wellbeing – Supporting activity for mental wellbeing.

## What do you think?



# BRINGING THINGS TOGETHER

## Learning and Enterprise



### Enterprise & Other

- Co-working spaces - workshops and studios, start up business units, etc
- Women's Group
- Credit Union Bank
- Light Industry Space - Microbrewery / Gin Distillery, etc
- Retail – Various
- Recycling Centre
- Retail/Market Space – Farmers' market, car boot sales, etc
- Accommodation – Houses or a Hotel
- Meeting venue and bookable spaces
- Old Folks home
- New marina

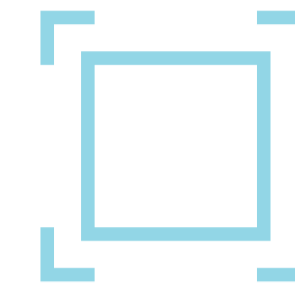
## Community Wellbeing



### Advice & Community Awareness

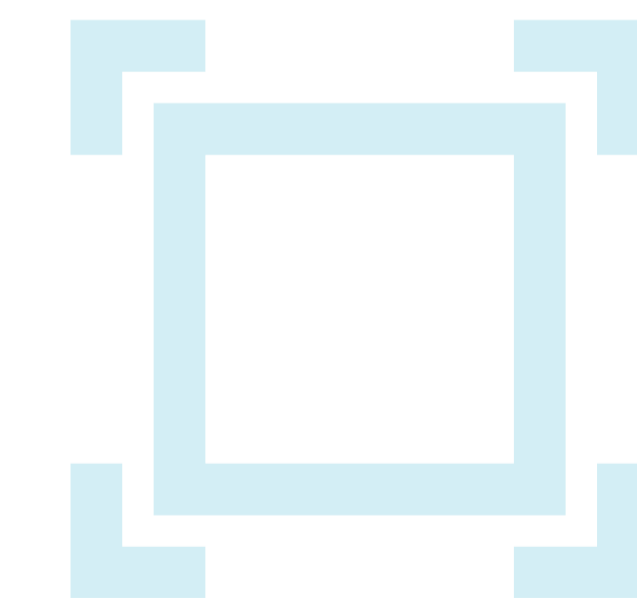
- Community Resource and Advice
- Citizens Advice Bureau
- Initiatives: Tourist and Newcomer Advice (Where to get certain facilities - where are the toilets / ATMs / shops internet café; links to health & wellbeing / walkable routes; cruise traffic just to sit / facilities); Recycling days / 'Bucket Days'; A 'welcome club'; development of a digital app for tourists.

### Informal Space / Shared Space / Reflective Space



- Library (free web access/PCs, toy library, jigsaw exchange)
- Place to study, online resource, etc.
- Digital Access Space with learning provision
- Permanent quiet/reflective space
- Youth Club / Teenage Space – Informal space (e.g. place to chat, video games, etc)
- Initiatives: Board Games Club – Chess, etc; Literary Society

## What do you think?



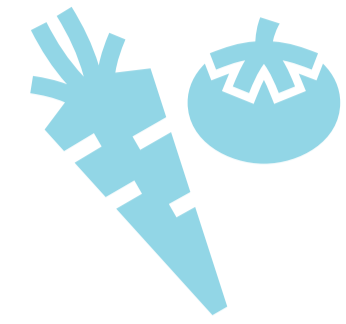
<b>Who would use this?</b>	Local residents; Customers;
<b>Who could take the lead?</b>	Local volunteers, Entrepreneurs
<b>Potential Partners</b>	Local Businesses; Generations Together
<b>How could it be funded?</b>	Self-Funded; Grant Funding (LEADER, etc)
<b>What are the physical/space requirements?</b>	<ul style="list-style-type: none"> <li>• Small Rooms</li> <li>• Large Rooms</li> <li>• Outdoor area</li> </ul>
<b>How will this activity be intergenerational?</b>	<ul style="list-style-type: none"> <li>• Older and younger generations working together. Apprenticeships for younger generations</li> </ul>
<b>Relationship to Other Activities</b>	<ul style="list-style-type: none"> <li>• Education &amp; Life skills – Employment opportunities</li> <li>• Health &amp; Wellbeing – Potential referral partner</li> <li>• Food &amp; Garden/Greenspace – Link to sale of produce. Share ingredients if food related.</li> </ul>

<b>Who would use this?</b>	Newcomers to the area; cruise ship passengers; local residents, general tourists.
<b>Who could take the lead?</b>	Paid staff member; Volunteers (Young & Old); Edinburgh Council (Lifelong Learning);
<b>Potential Partners</b>	NHS; Edinburgh Council; Citizens Advice Bureau; Schools; CruiseForth; St Columba's Hospice; Visit Edinburgh; Porto and Fi; Milk @ ESW.
<b>How could it be funded?</b>	Grant (money); Visit Scotland; Edinburgh Council – grant money; Leith Community Council.
<b>What are the physical/space requirements?</b>	<ul style="list-style-type: none"> <li>• Front door / shop front for info hub</li> <li>• Lindsay Road access, small office.</li> </ul>
<b>How will this activity be intergenerational?</b>	<ul style="list-style-type: none"> <li>• Older generation teaching younger generation (Apprenticeship, Duke of Ed Award, etc)</li> <li>• Advice from all generations.</li> <li>• Younger generation helping with marketing, social media, etc.</li> </ul>
<b>Relationship to Other Activities</b>	<ul style="list-style-type: none"> <li>• Performance – Signpost to performance activities.</li> <li>• Food &amp; Food Production – Link tourists and others to café for use.</li> <li>• Health &amp; Wellbeing – Direct to service provision.</li> <li>• Identity &amp; Heritage – Link to culture and heritage activities (trail, etc.). Utilise young tour guides initiative.</li> </ul>

<b>Who would use this?</b>	Local residents; Young People; Older Generation; Care Homes; Community groups; Families
<b>Who could take the lead?</b>	Local volunteers
<b>Potential Partners</b>	City Library
<b>How could it be funded?</b>	Grant Funding
<b>What are the physical/space requirements?</b>	<ul style="list-style-type: none"> <li>• Small Room</li> <li>• Large Room</li> </ul>
<b>How will this activity be intergenerational?</b>	<ul style="list-style-type: none"> <li>• Young people could teach older generation digital access skills.</li> <li>• Older people could teach younger generation organisation and administration skills.</li> <li>• Younger generation could learn communication skills through book reading to all generations.</li> </ul>
<b>Relationship to Other Activities</b>	<ul style="list-style-type: none"> <li>• Health &amp; Wellbeing – Supporting activity/space for mental wellbeing.</li> <li>• Heritage &amp; Identity – Act as a resource for written material. Could also become a quiet space for studying history of area.</li> </ul>

# BRINGING THINGS TOGETHER

## Community Wellbeing



### Food and Garden/Greenspace

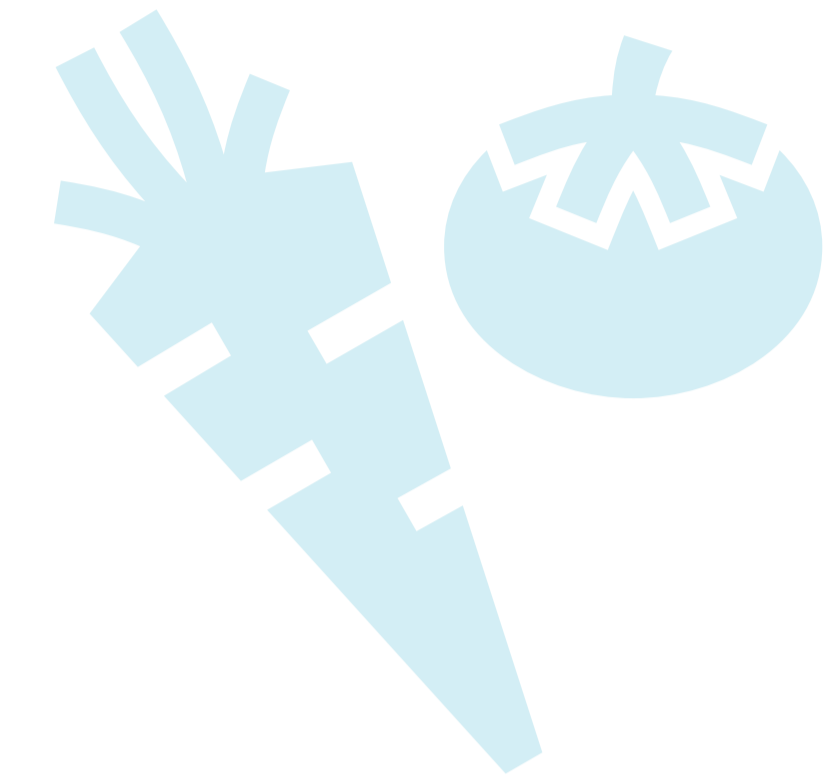
- Community Café / Community Meals (healthy eating)
- Community Fridge
- Gardening Club & Greenspace / Sensory Garden
- Foodbank
- Initiatives: Food Budgeting; Cooking Classes; Nutritional Courses; Social Activity for older groups (tea & scone gathering and whist drives, etc); Multicultural sharing (cooking, etc); Breakfast club (for pupils), Pot Luck dinners; Newhaven Food Festival; signpost to private gardens to share.



### Health & Wellbeing

- Exercise and fitness centre – gym equipment, spa, trampoline, sports pitch, pool, external climbing wall, outdoor table tennis, trampoline, all weather pitch, yoga, pilates, Zumba, traditional movement skills, indoor golf, etc
- Public Health Hub: Provision and Support – drug treatment, support groups, mental health, family, domestic abuse, art therapy, campaigns – smoking, etc
- Temporary Accommodation for Homeless
- Animal Therapy / Petting Zoo
- Sensory Facilities
- Prayer Facilities

## What do you think?



<b>Who would use this?</b>	Local residents; Older Generation; Care home residents; Families; Tourists; School pupils
<b>Who could take the lead?</b>	Local volunteers
<b>Potential Partners</b>	Multicultural Family Base; Edinburgh Council (Lifelong Learning); Royal Botanic Garden; Pilmeny Development Project
<b>How could it be funded?</b>	Grant Funding (Trussell Trust, etc); Self-funded (sale of food, etc).
<b>What are the physical/space requirements?</b>	<ul style="list-style-type: none"> <li>• Kitchen Facilities</li> <li>• Large room with seating</li> <li>• Garden, storage cupboard &amp; water source (Tools, etc)</li> <li>• Greenspace</li> </ul>
<b>How will this activity be intergenerational?</b>	<ul style="list-style-type: none"> <li>• Older generation teaching different generations gardening or cooking skills.</li> <li>• Younger generation helping different generations with preparation of food, or garden.</li> </ul>
<b>Relationship to Other Activities</b>	<ul style="list-style-type: none"> <li>• Health &amp; Wellbeing – Supporting activity for mental wellbeing.</li> <li>• Performance – Café could support events.</li> <li>• Family, Young People and Early Years – Activities for family and young people.</li> </ul>

<b>Who would use this?</b>	Local residents; Specific needs individuals; Dementia Groups; Care Home residents.
<b>Who could take the lead?</b>	Edinburgh Leisure; Local Volunteers; NHS; City of Edinburgh Council (Lifelong Learning); Multi-Cultural Family Base; Pilmeny Development Project; Local Care Homes
<b>Potential Partners</b>	Schools; NHS (Referrals - GP Surgery, etc); Blackthorn Trust.
<b>How could it be funded?</b>	NHS; Grant Funding;
<b>What are the physical/space requirements?</b>	<ul style="list-style-type: none"> <li>• Outdoor equipment</li> <li>• Large room for exercise/movement classes</li> <li>• Counselling/Surgery/Therapy rooms</li> <li>• Small Room</li> <li>• Small rooms/accommodation for homeless in the area</li> </ul>
<b>How will this activity be intergenerational?</b>	<ul style="list-style-type: none"> <li>• Encourage service provision for all ages</li> <li>• Older generation teaching younger generation facilitation skills: leading activities, etc.</li> </ul>
<b>Relationship to Other Activities</b>	<ul style="list-style-type: none"> <li>• Advice – Provide services.</li> <li>• Family, Youth &amp; Early Years - Provide services.</li> <li>• Craft &amp; Makery – Signpost/refer to activity.</li> <li>• Arts – Signpost/refer to activity.</li> <li>• Identity &amp; Heritage - Link with activities such as reminiscence, etc.</li> </ul>



# NEXT STEPS



© Crown Copyright: HES

## Where we are and what happens next

### September 2019

Apply for Scottish Land Fund Stage 1 funding which can support the costs of feasibility work to prepare an application towards the costs of purchase.

### October 2019

Scottish Land Fund decision on Stage 1 application.

### Jan 2020

Asset Transfer application, including the business case for a purchase price based on the feasibility study and community consultation, made by HoN to CEC.

### Oct 2019 - Jan 2020

Feasibility work undertaken including evidence of strong community support for our proposals for the use of the building and any related impacts taken into account, an analysis of the market for the proposed uses within the local area and across the City, a thorough examination of the financial aspects of acquiring and using the building ensuring any risk is minimised and that the prospect of returning to the Council for assistance or for requests for funding is minimal.

### July 2020

Decision by CEC

### Sept 2020

Application to Scottish Land Fund for the purchase price of the building as agreed with CEC

### Nov 2020

Scottish Land Fund decision

### Jan 2021

Purchase

## How does this fit with the Community Asset Transfer process

Our Expression of Interest was accepted by CEC in March 2019. We needed to provide initial proposals for the use of the building, evidence early community support and how our use of the building would contribute to key city and community plans.

A timetable for the Community Asset Transfer process has been agreed with CEC and The Scottish Land Fund. The Fund is a partnership between Highlands and Islands Enterprise (HIE) and the Big Lottery Fund and will support projects that involve land and property ownership that are community-led, community controlled and deliver socio-economic impacts.

