

Currie Community High School

Presentation to Key Stakeholders
for Currie CHS redevelopment

29 January 2021



Presentation summary



Concept and brief

Introduction to Passivhaus

Site layout and building massing

Internal spatial configuration

- Entrance hub

- Teaching block

- Sports & wellness centre

Phasing of construction works

Externals and landscape (by Wardell Armstrong)

Questions and Answers

Currie Community High School

Concept and brief



Current design brief

New secondary school facilities for 1000 pupils

Learning Resource Centre

Community café

Shared school & community sports facilities including new external 3G pitch

4 lane swimming pool

Total project GIFA allocation: 12,749 m²

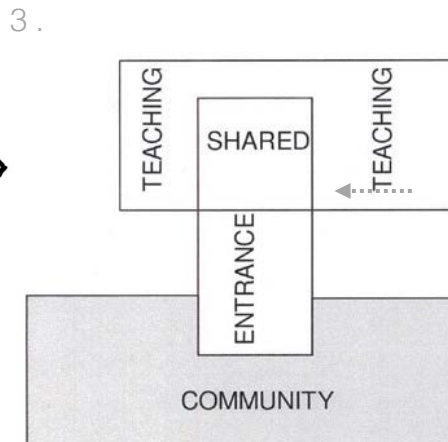
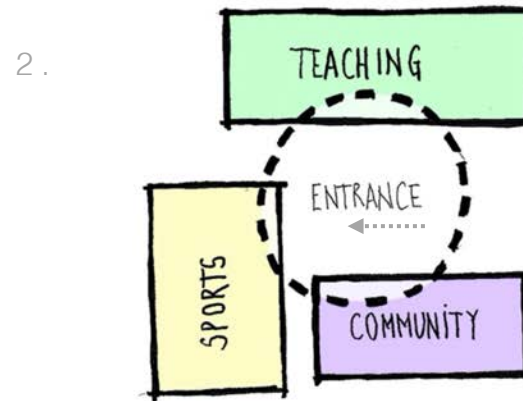


“With the aim of creating an inclusive zero-carbon city, The City of Edinburgh Council vision is for a place-based approach to learning and community infrastructure investment. The drive is for community lifelong learning and sports hubs, where public services can be co-located with links to travel networks, green infrastructure and strategic public transport networks.”

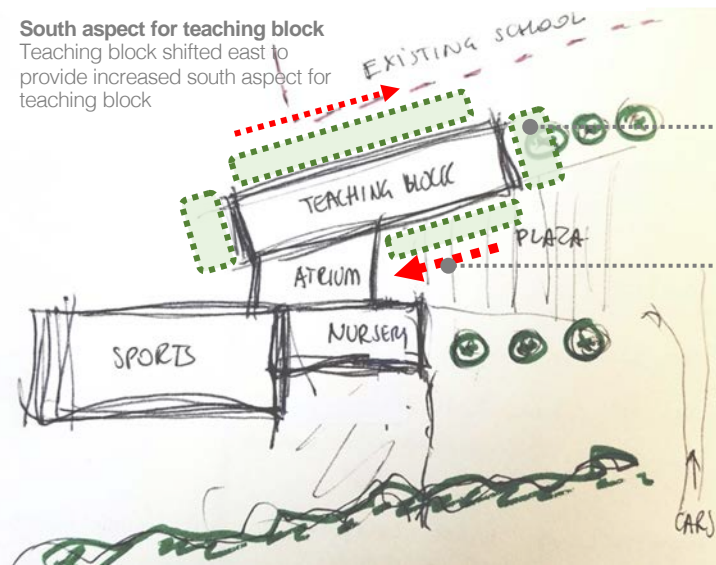
Vision for the New Currie Community Learning & Community Campus

Strategic layout

Concept development



4. **South aspect for teaching block**
Teaching block shifted east to provide increased south aspect for teaching block



Outdoor learning
Opportunity for direct outdoor access to teaching spaces

Key entrance and approach
Teaching block also rotated to provide a more open entrance for all with improved approach from parking areas

Currie Community High School

Introduction to Passivhaus



What is Passivhaus ?



- a technical standard
- ensures buildings perform correctly

What is Passivhaus ?

ARCHITYPE



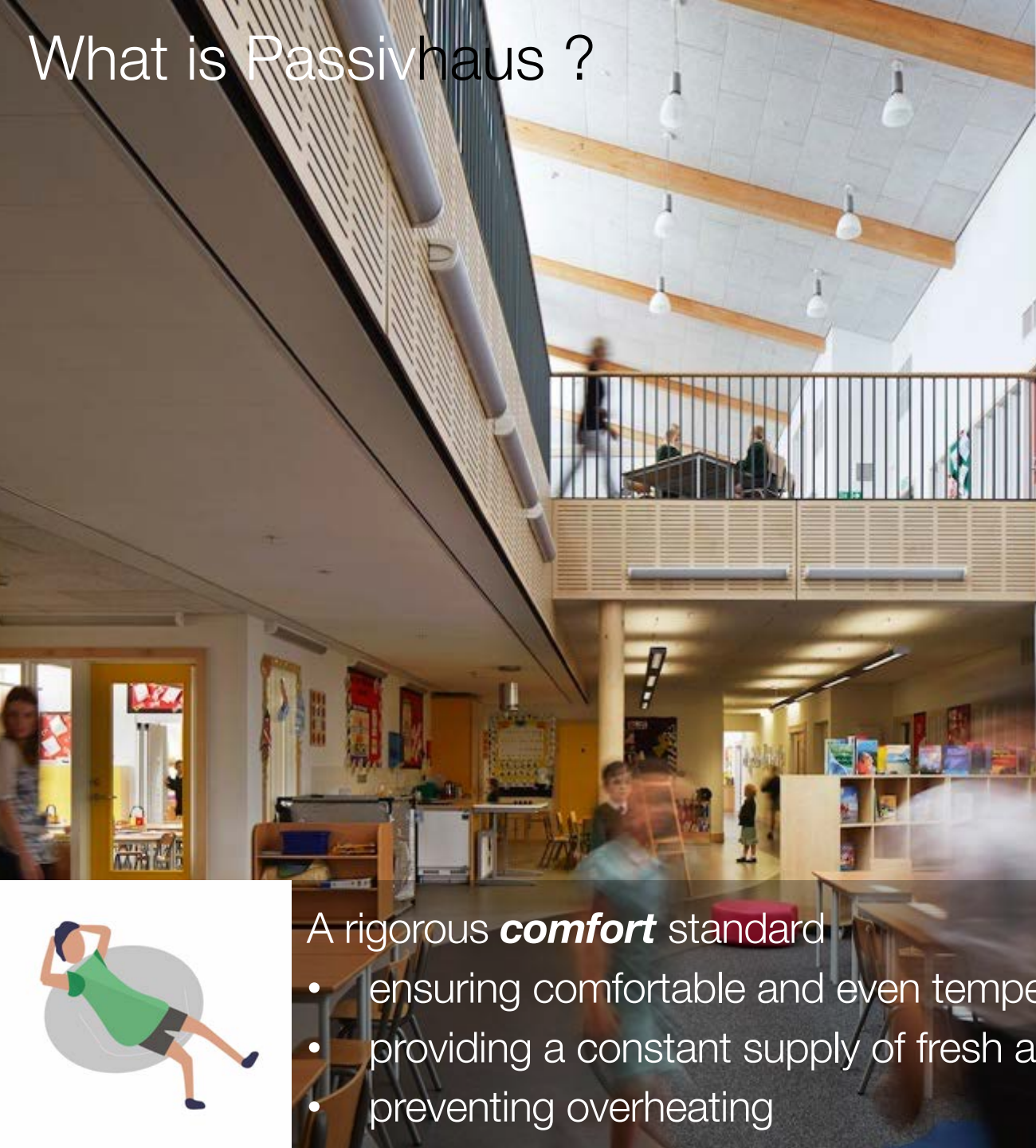
A rigorous **energy** standard

- reducing energy consumption needing for heating by up to 90%
- reducing total energy by around 70%
- minimising carbon emissions



What is Passivhaus ?

ARCHITECTURE



A rigorous **comfort** standard

- ensuring comfortable and even temperatures
- providing a constant supply of fresh air and extract of stale air
- preventing overheating

What is Passivhaus ?



A rigorous **quality assurance** standard

- checks that design complies with standard
- requires evidence that construction complies with standard
- backed by external independent checking and certification

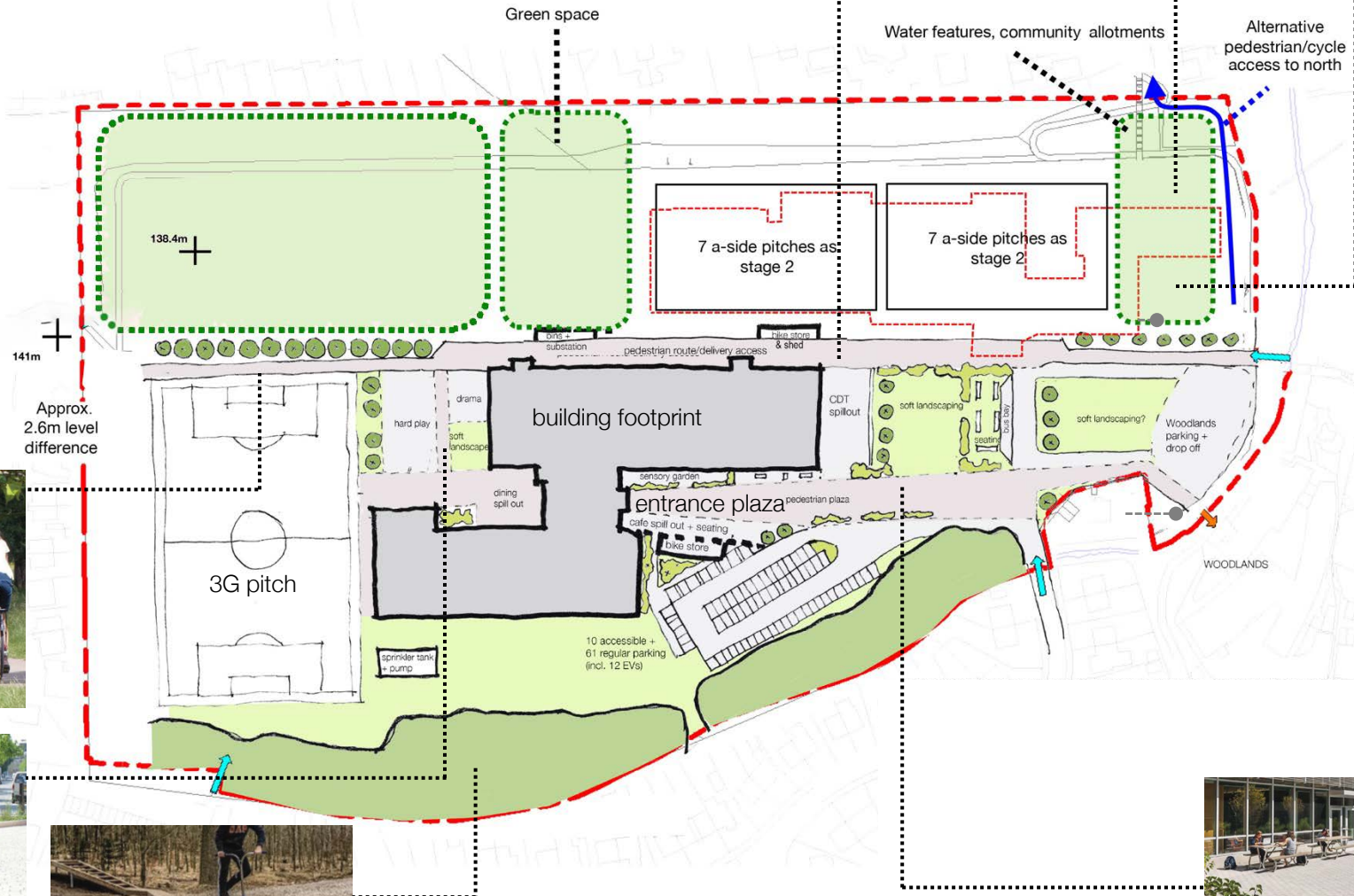
Currie Community High School

Site layout and building massing



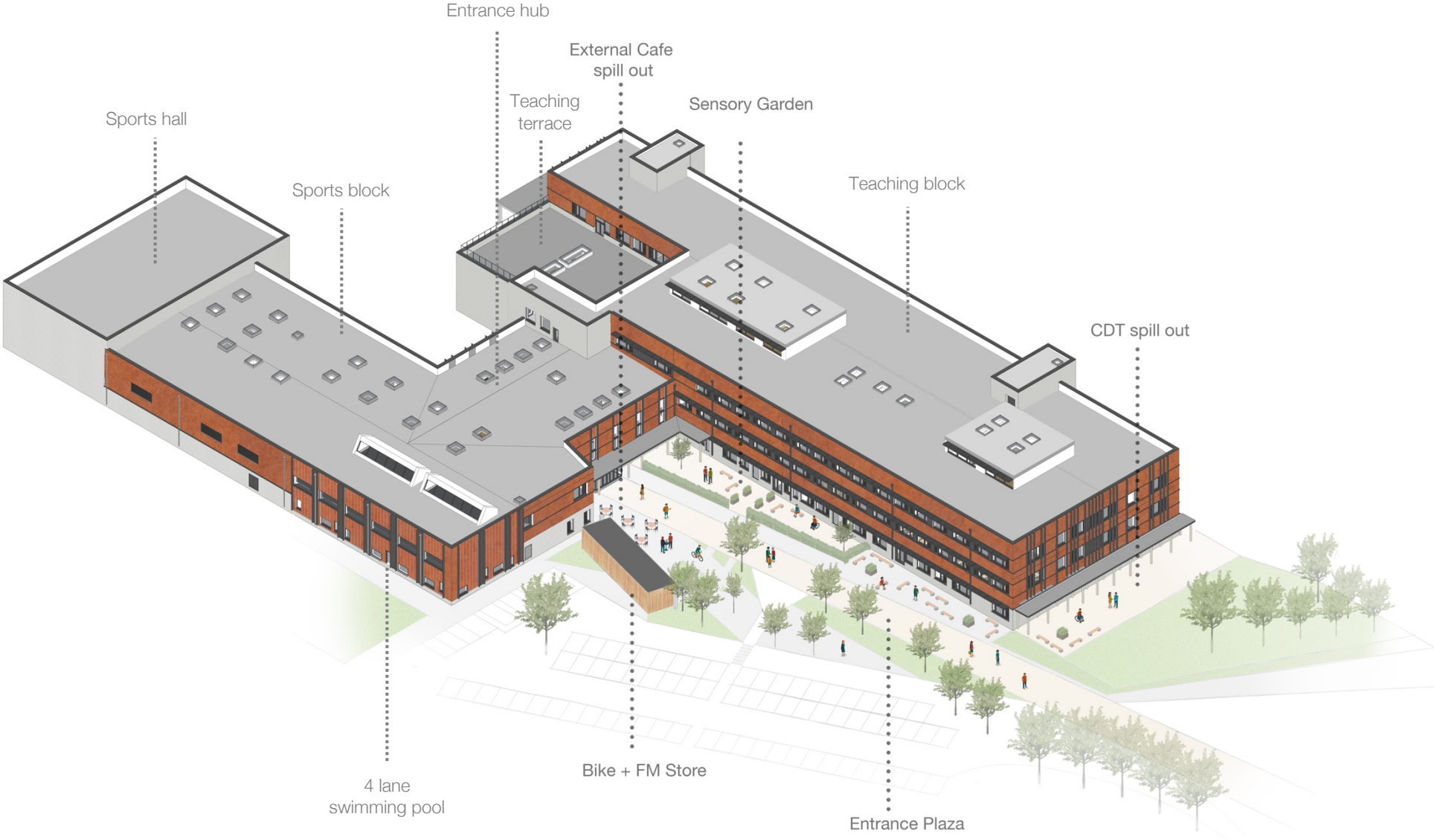
Landscape Strategy

Site layout



Revised building

Overview of massing and configuration



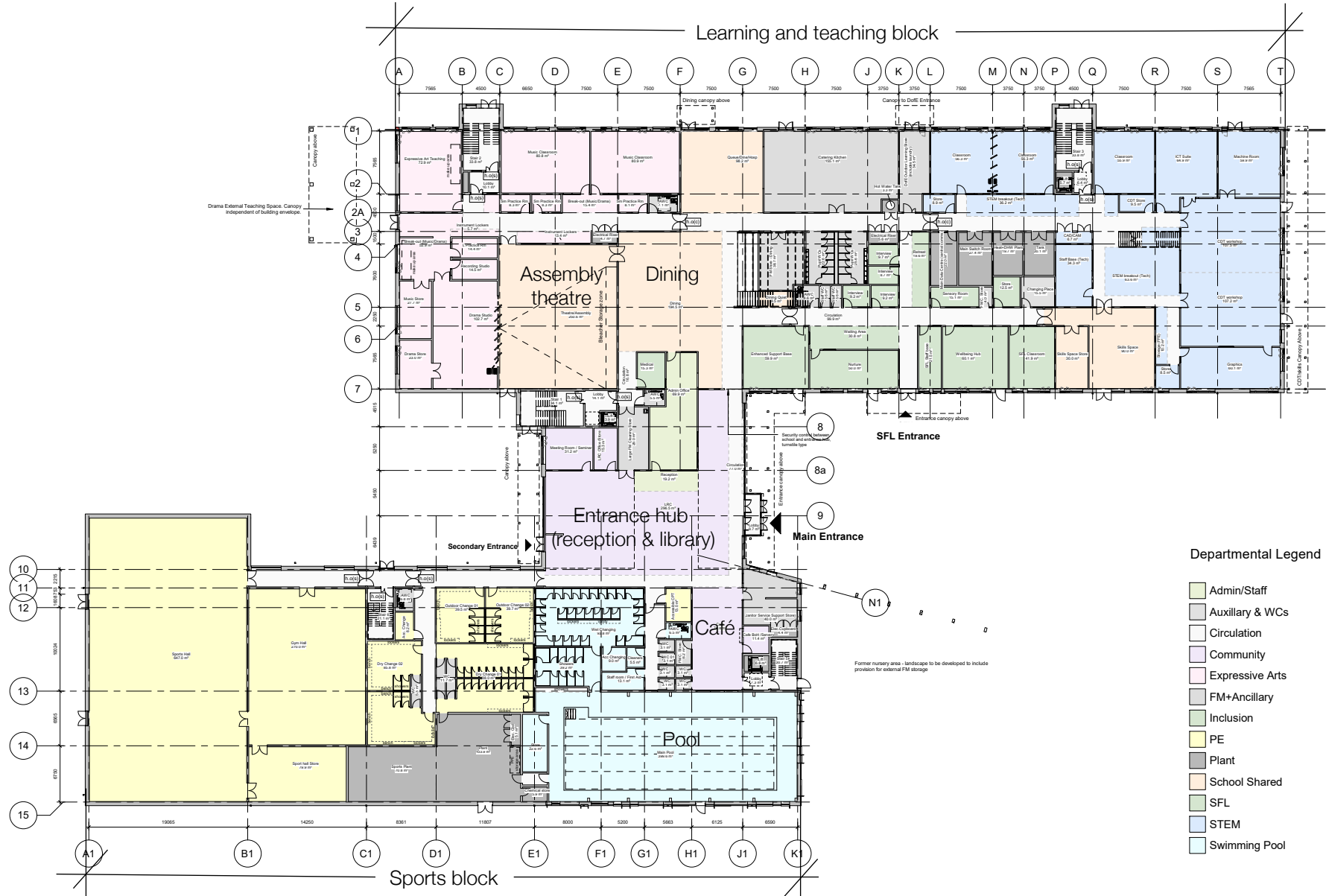
Currie Community High School

Internal spatial configuration



Internal Adjacencies

Current Ground Floor Layout

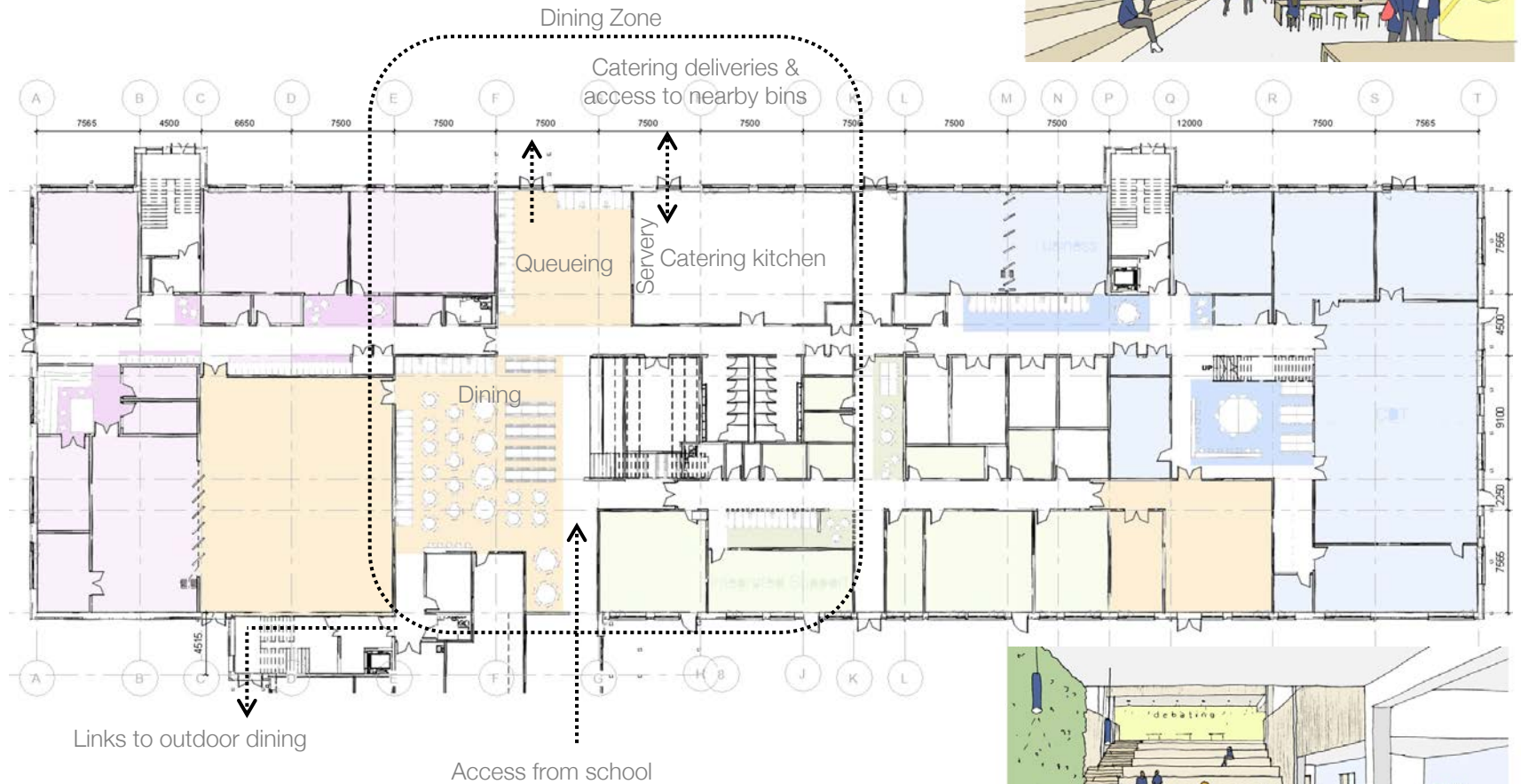


Departmental Legend

- Admin/Staff
- Auxiliary & WCs
- Circulation
- Community
- Expressive Arts
- FM+Ancillary
- Inclusion
- PE
- Plant
- School Shared
- SFL
- STEM
- Swimming Pool

Teaching Block

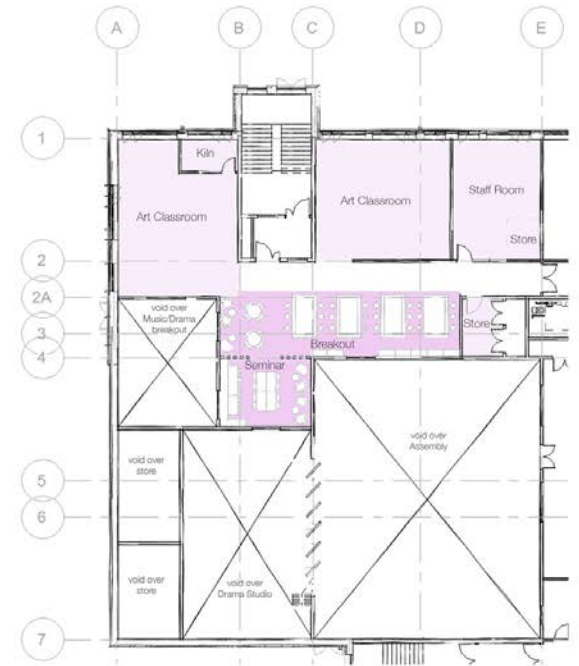
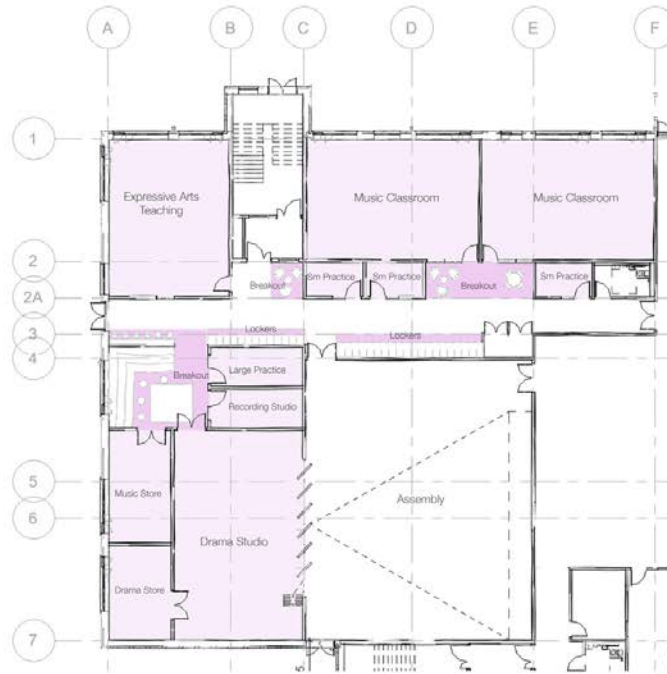
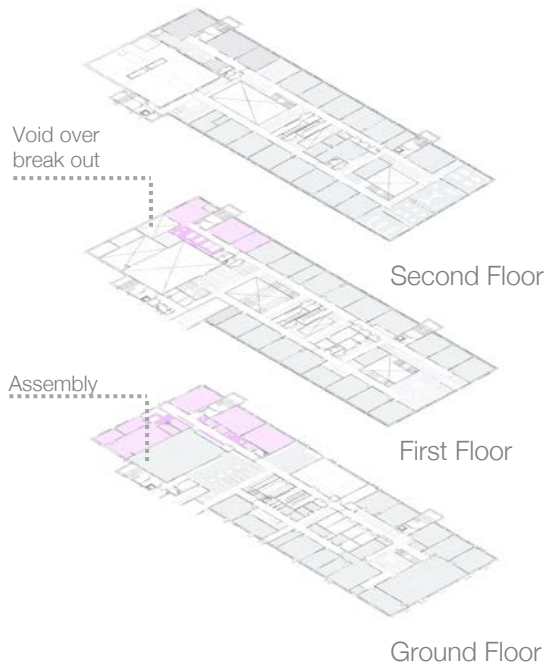
Dining facilities



Concept sketches of dining & Hellerup stair

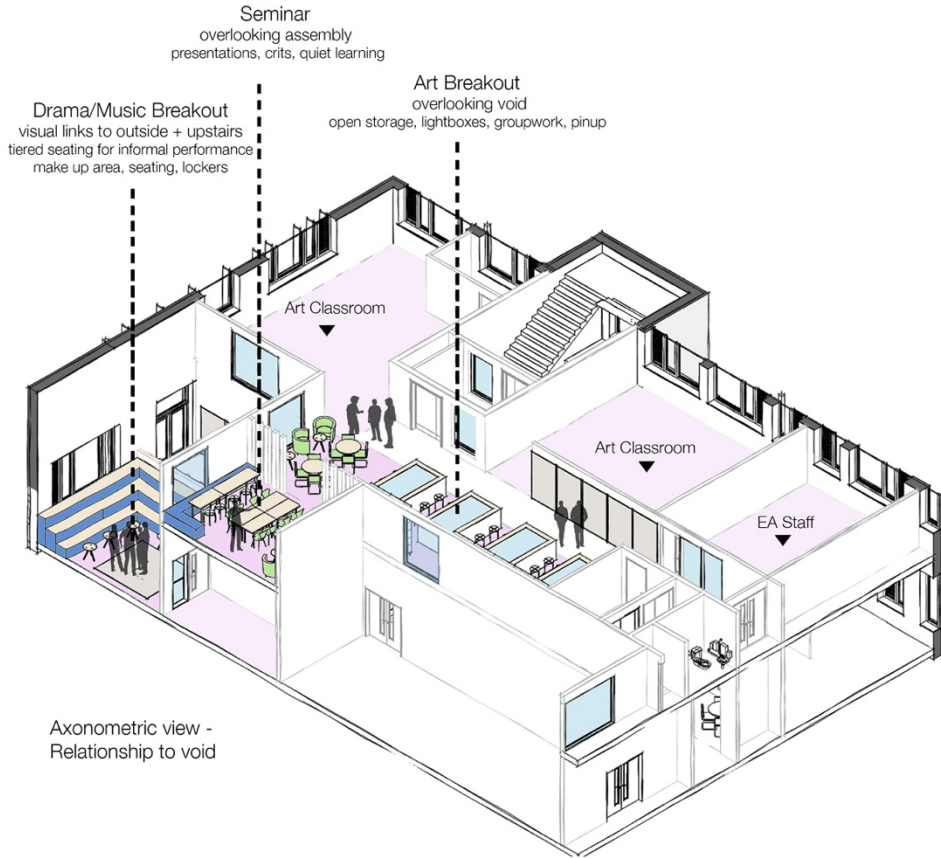
Expressive Arts and Assembly

Spatial configuration - layouts

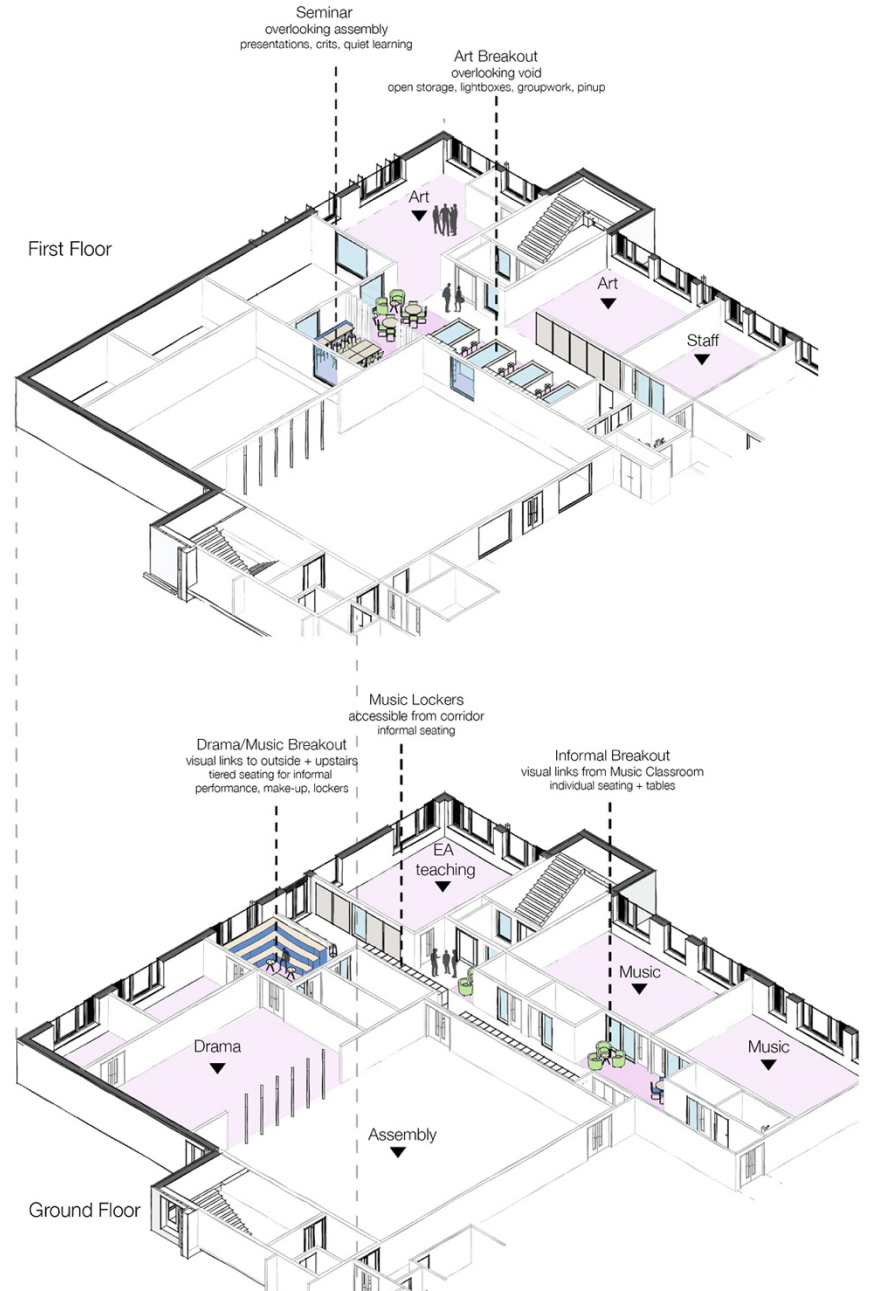


Expressive Arts & Assembly

Spatial configuration - 3D Views

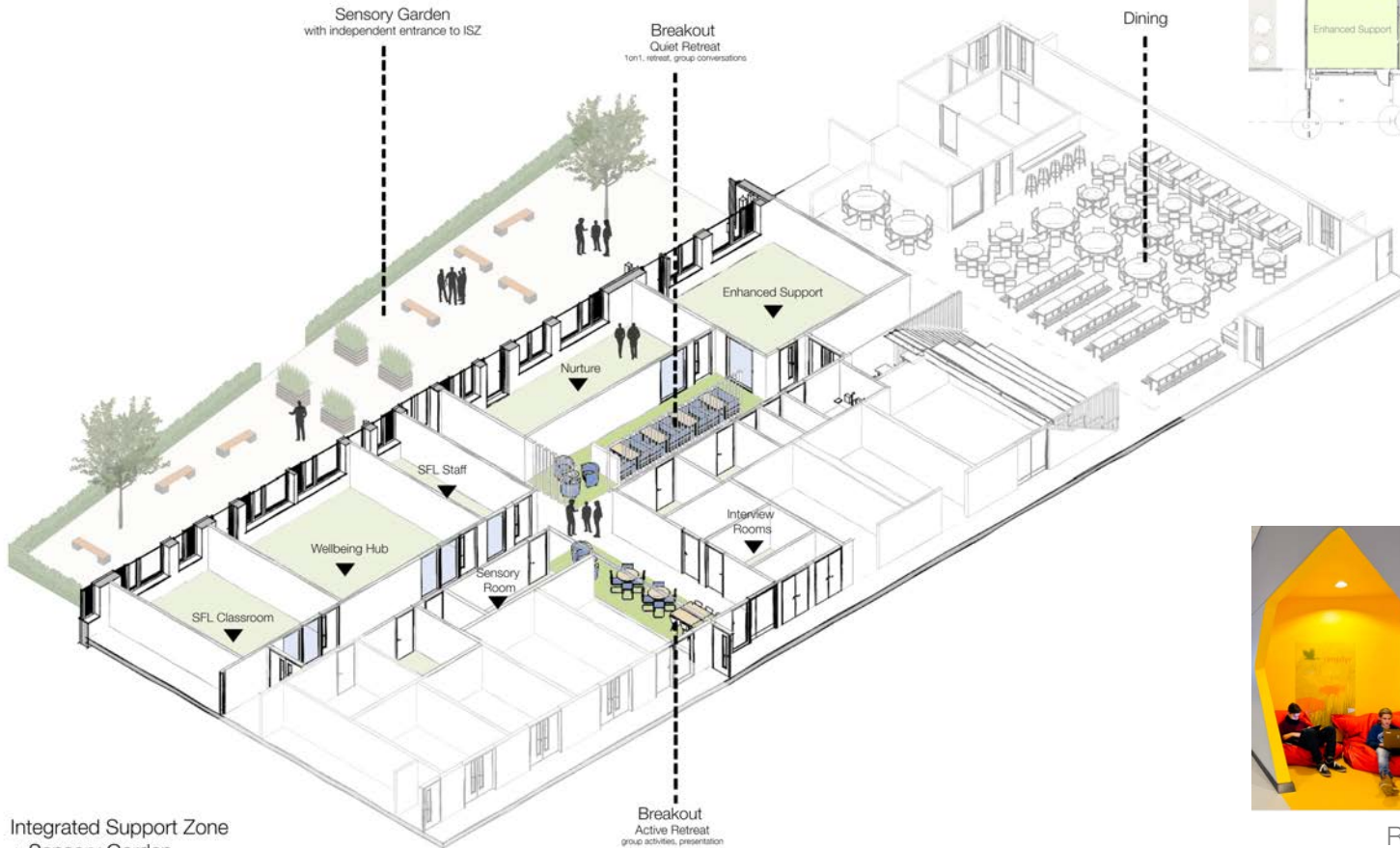
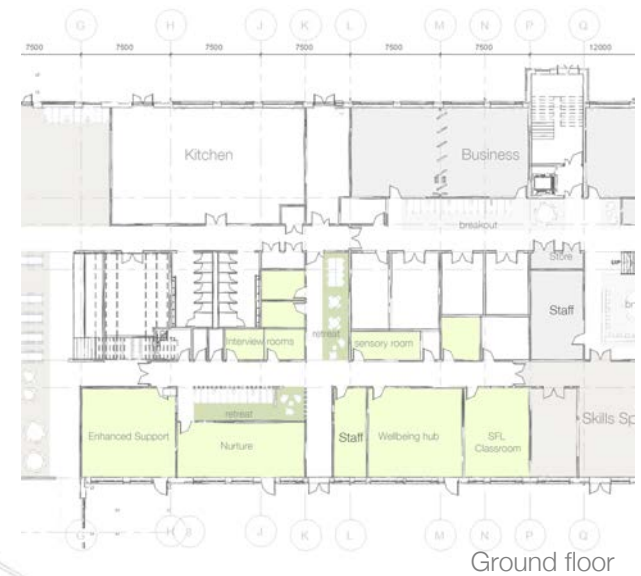


Axonometric view - Relationship to void

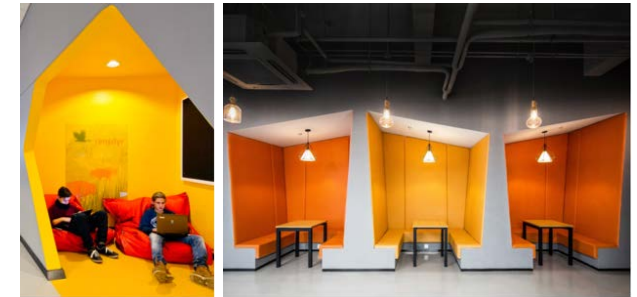


Integrated Support Zone – Ground floor

Inclusive support hub for pupils with additional needs



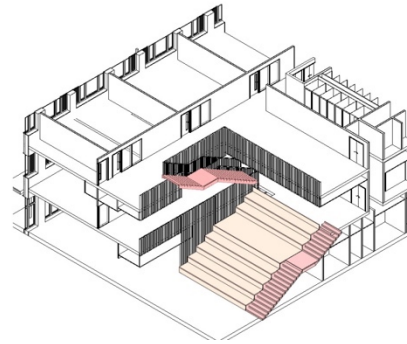
Integrated Support Zone
+ Sensory Garden



Retreat and breakout spaces within ISZ

Languages & Humanities – First Floor

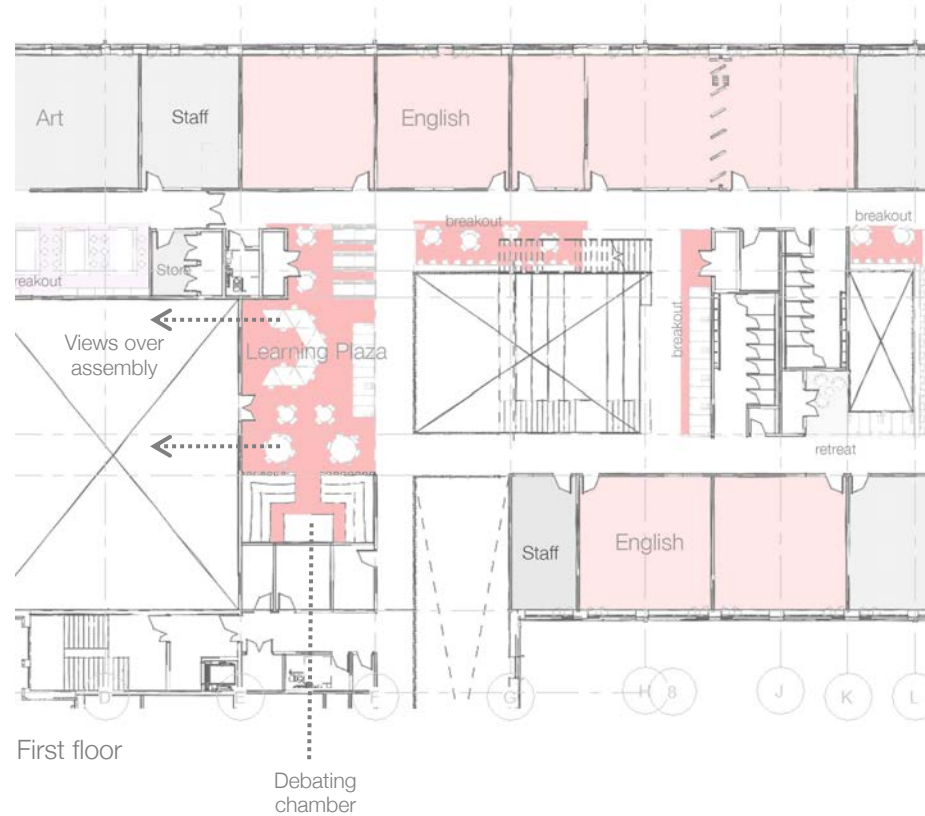
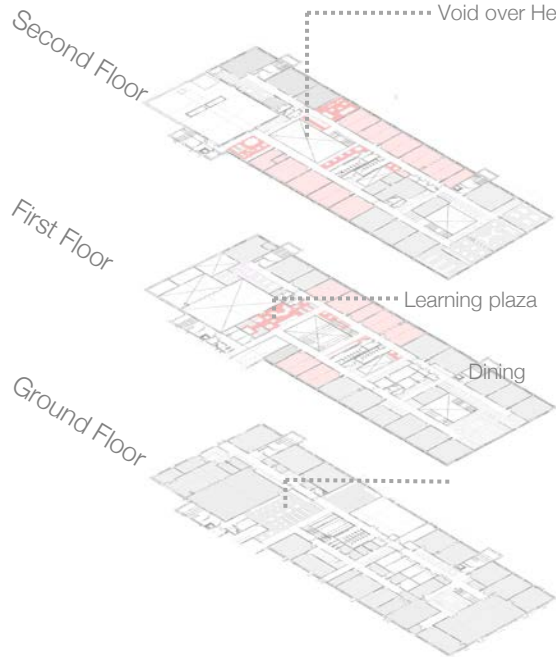
English and learning plaza



Use of feature stairs to connect L&H areas



View towards learning plaza

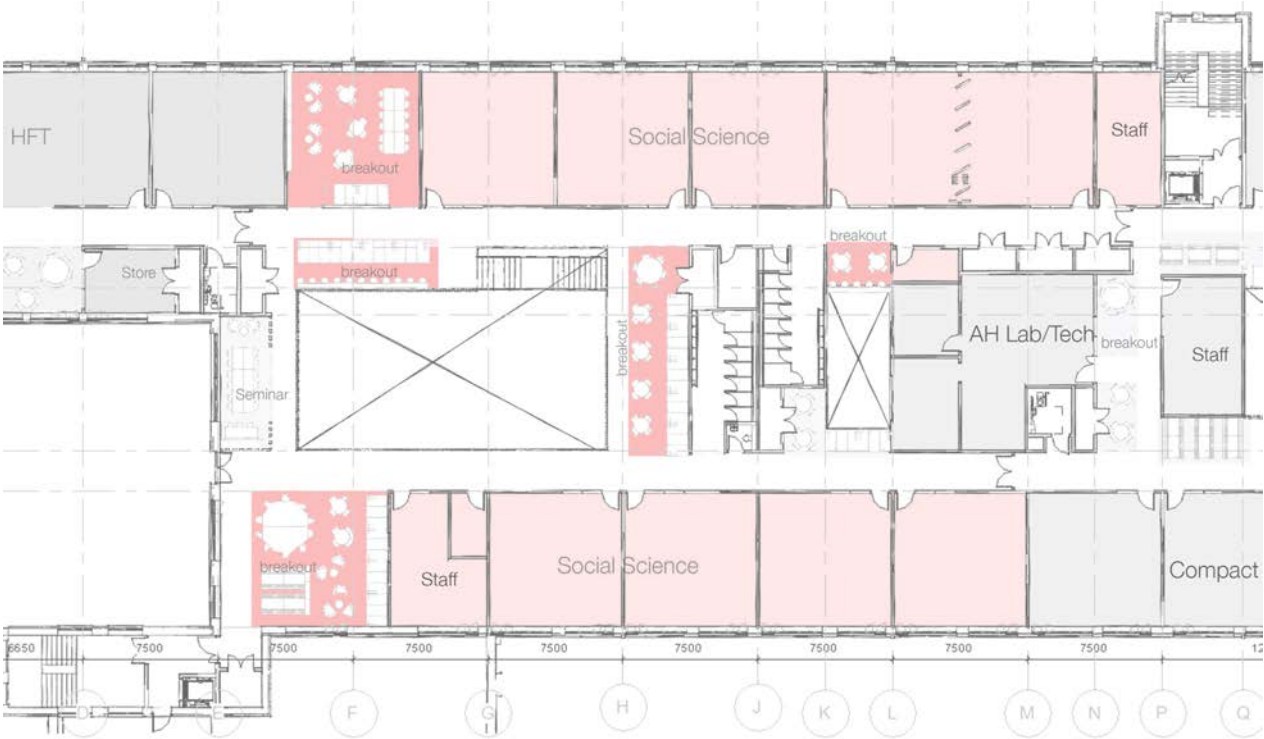


First floor

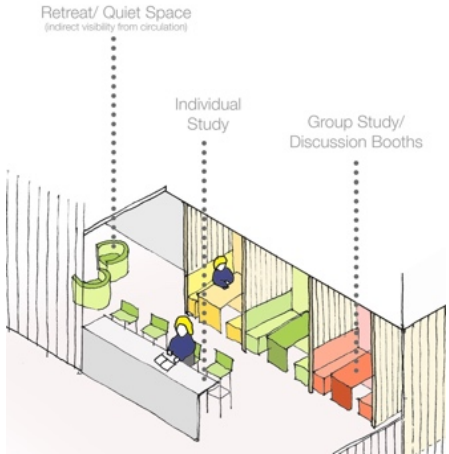
Debate chamber

Languages & Humanities – Second Floor

Social Sciences & Modern Languages



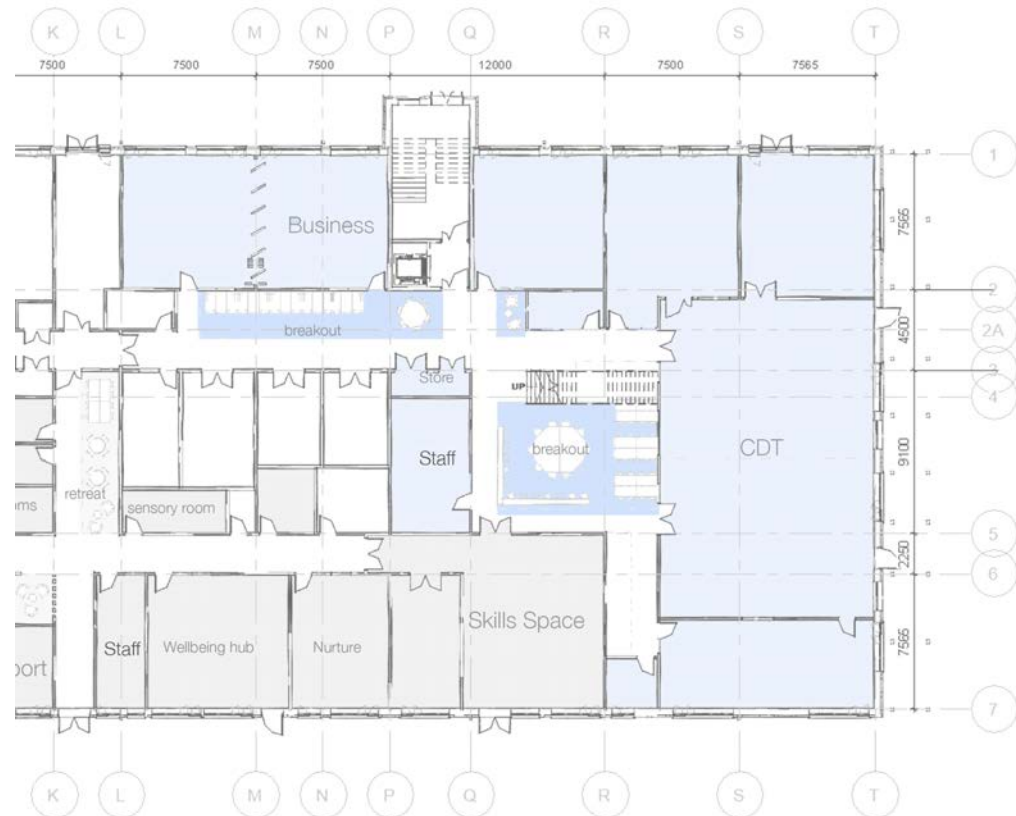
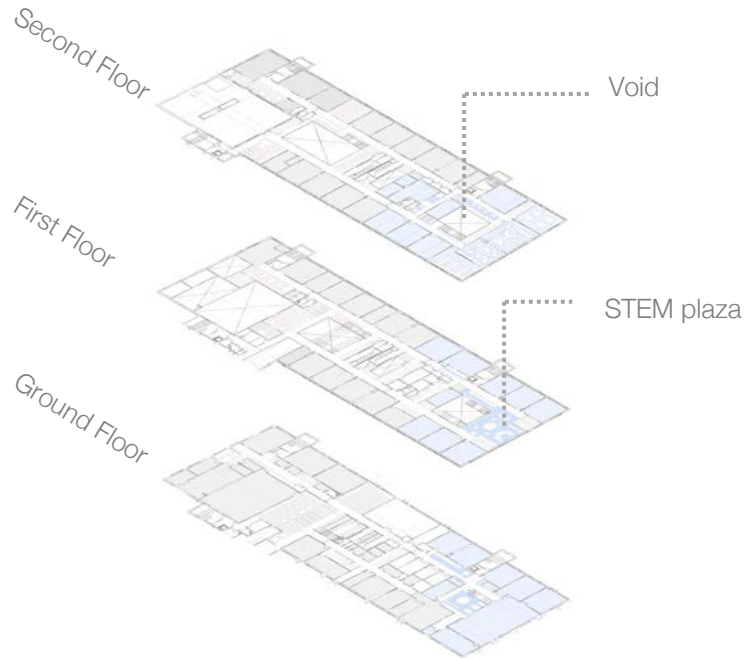
Second floor



Sketch of break out area uses

STEM (science, technologies, engineering & maths) – Ground floor

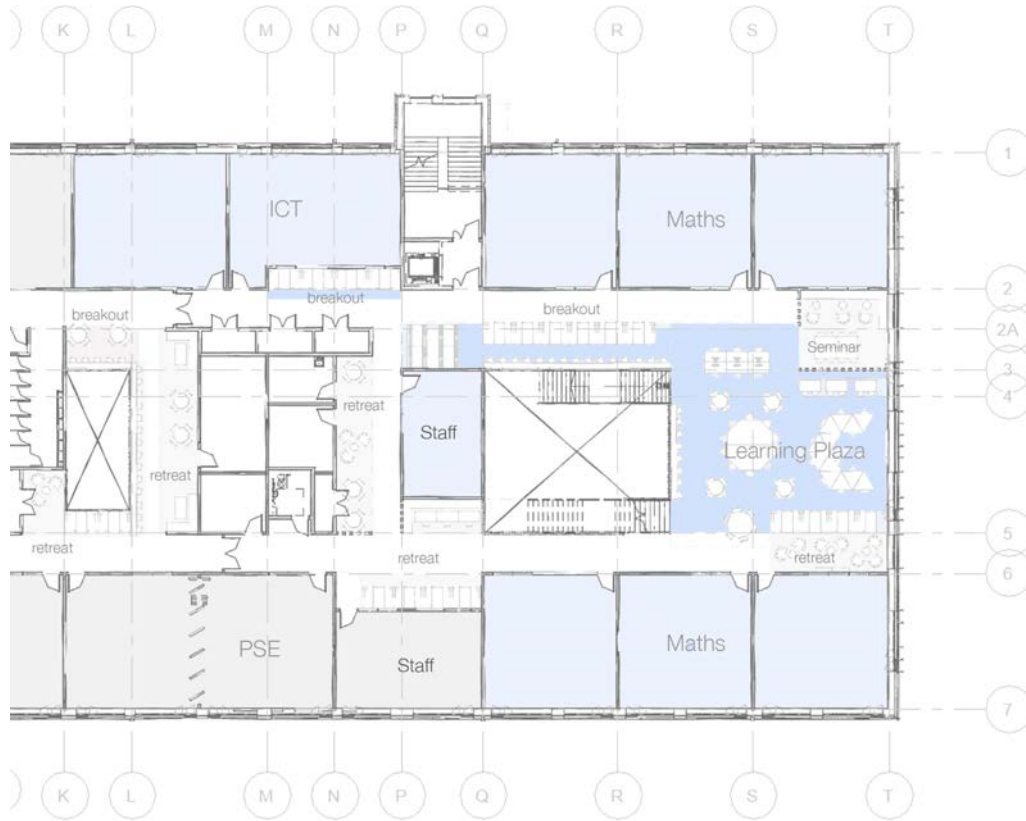
Business, CDT and Skills Space



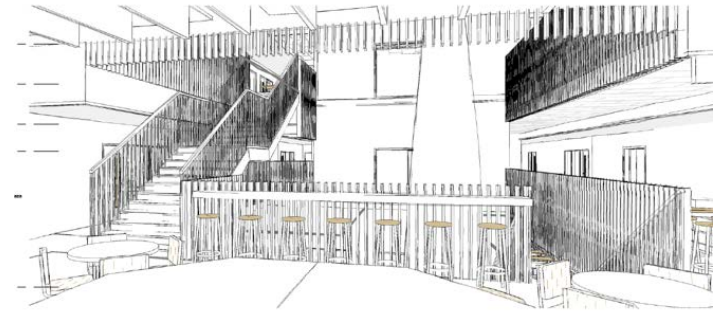
Ground floor plan

STEM – First Floor

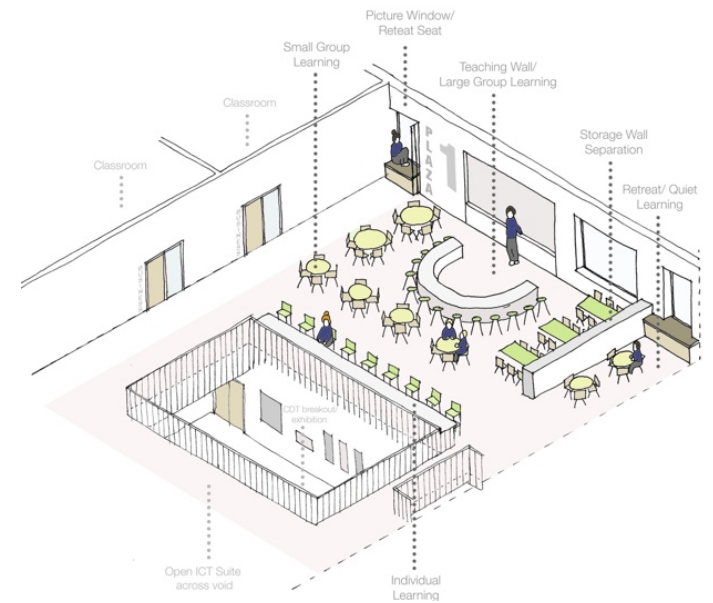
ICT and Maths



First floor plan



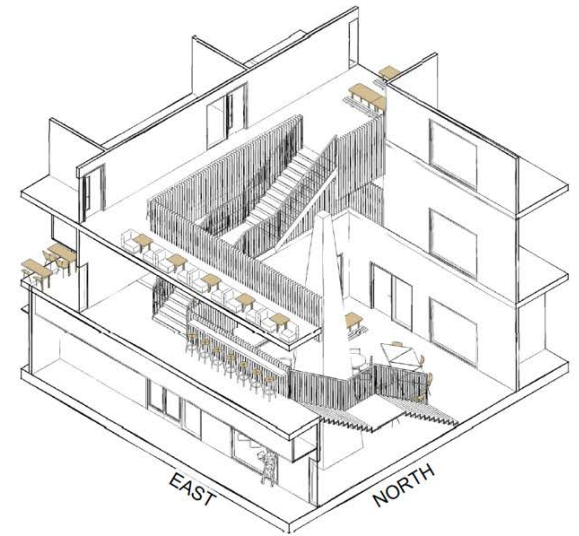
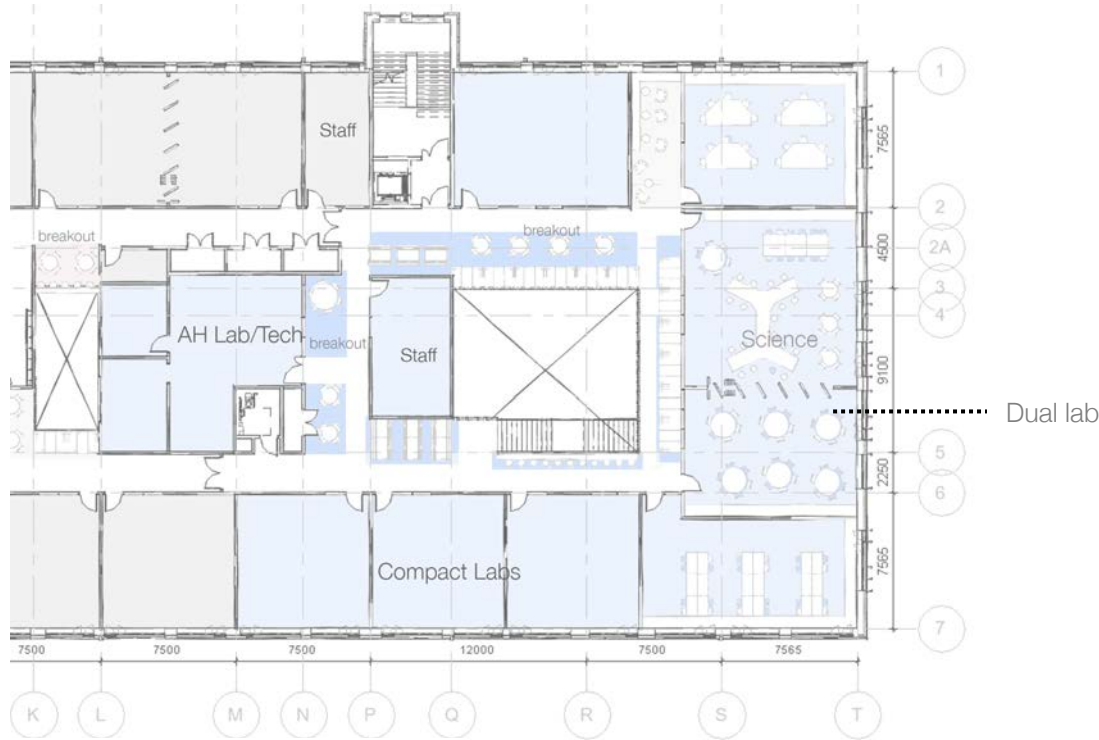
View from STEM plaza towards void



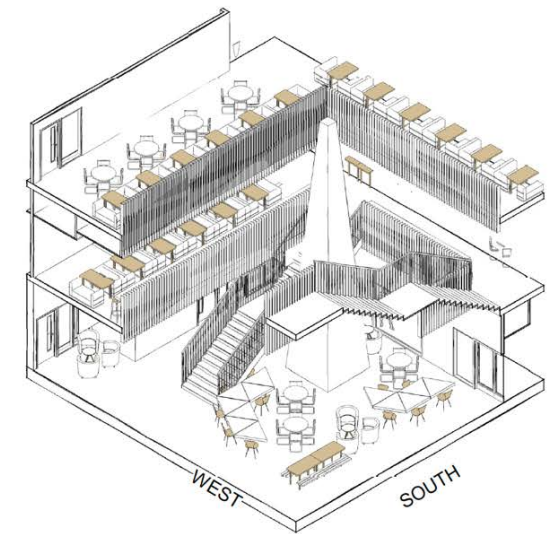
Sketch of indicative learning plaza spaces

STEM – First Floor

Science



3D view of the STEM void 1



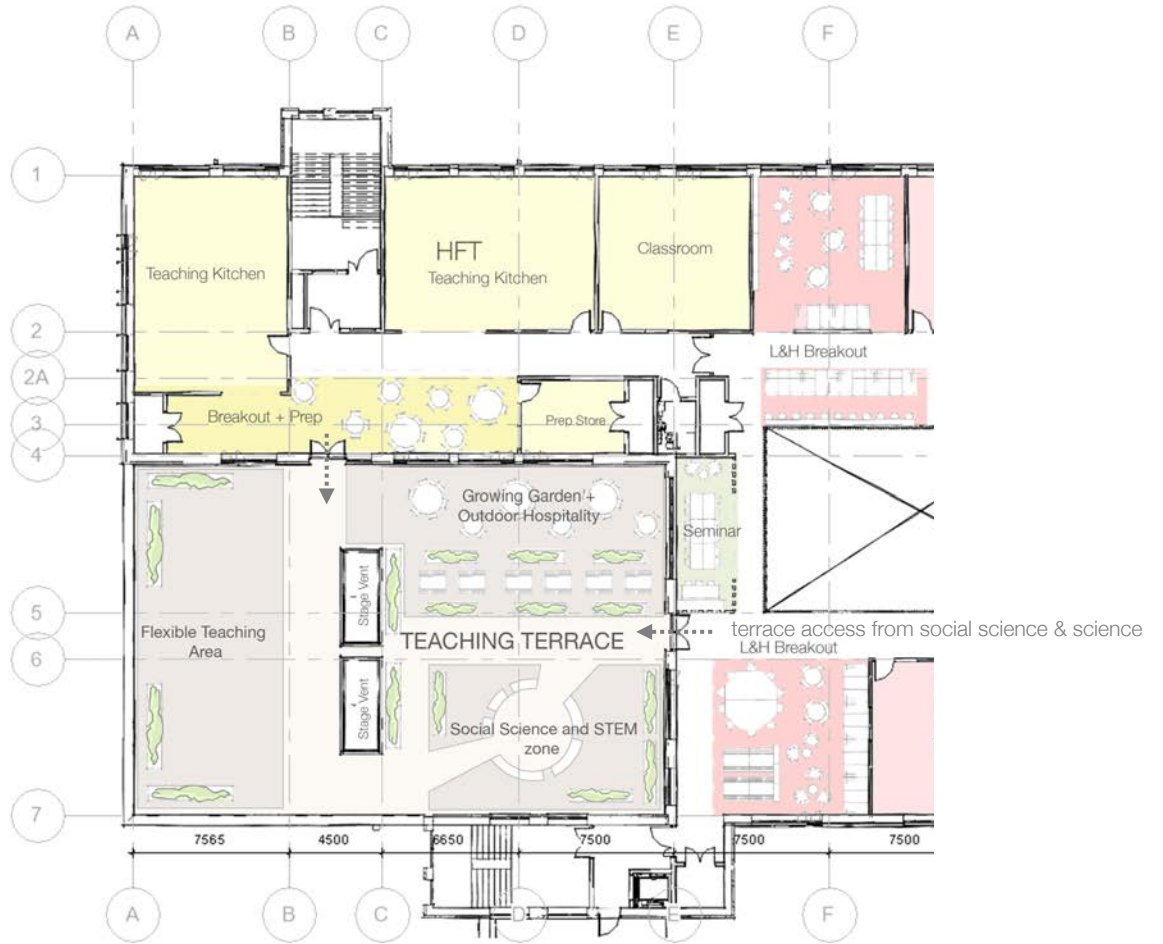
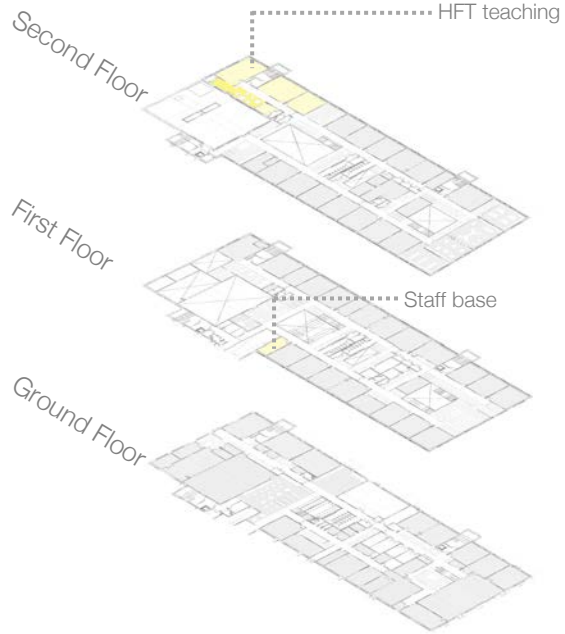
3D view of the STEM void 2



Examples of flexible learning spaces

Health & Wellbeing

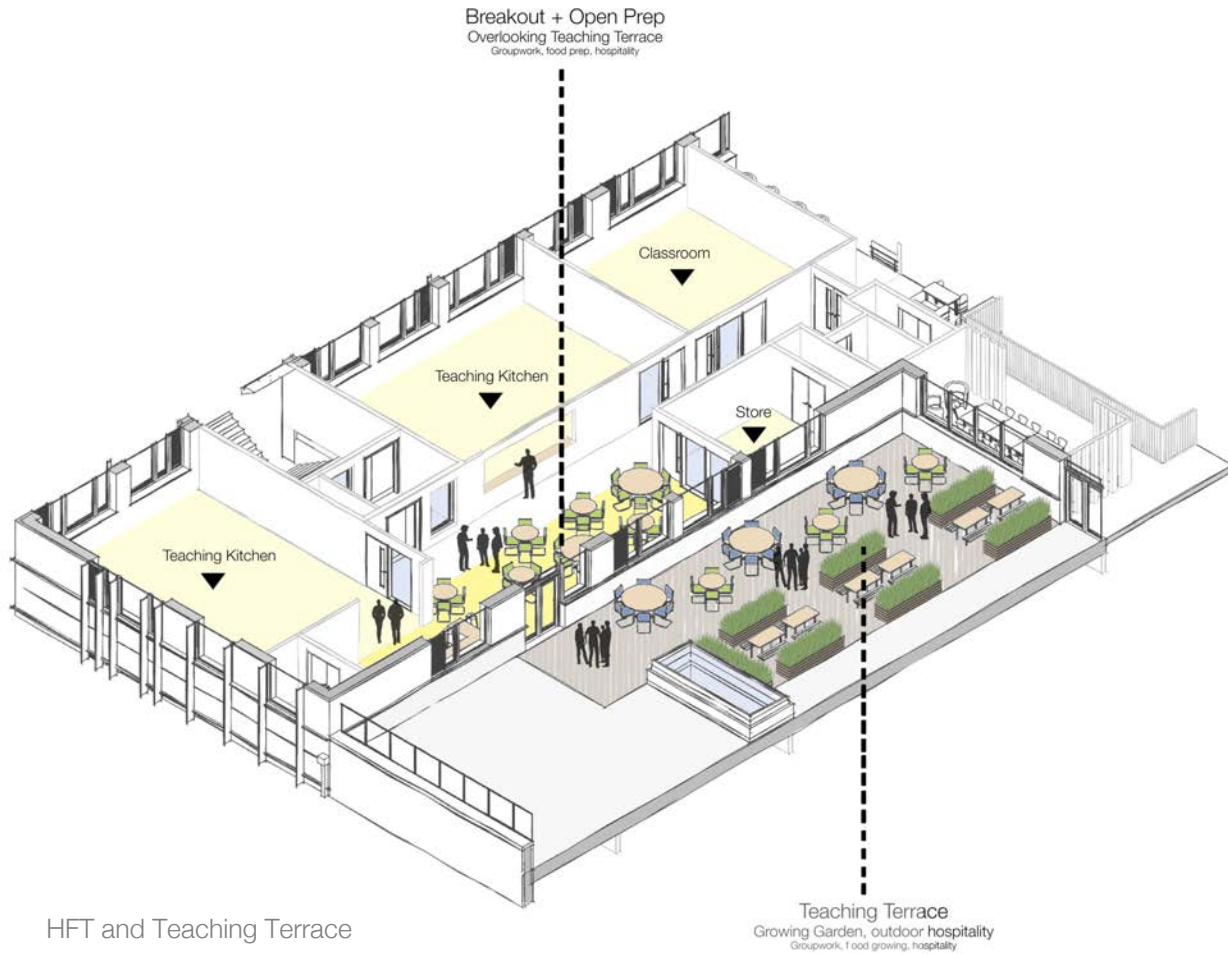
Food Technology – Second Floor



Second floor plan

Health & Wellbeing

Food Technology – Second Floor



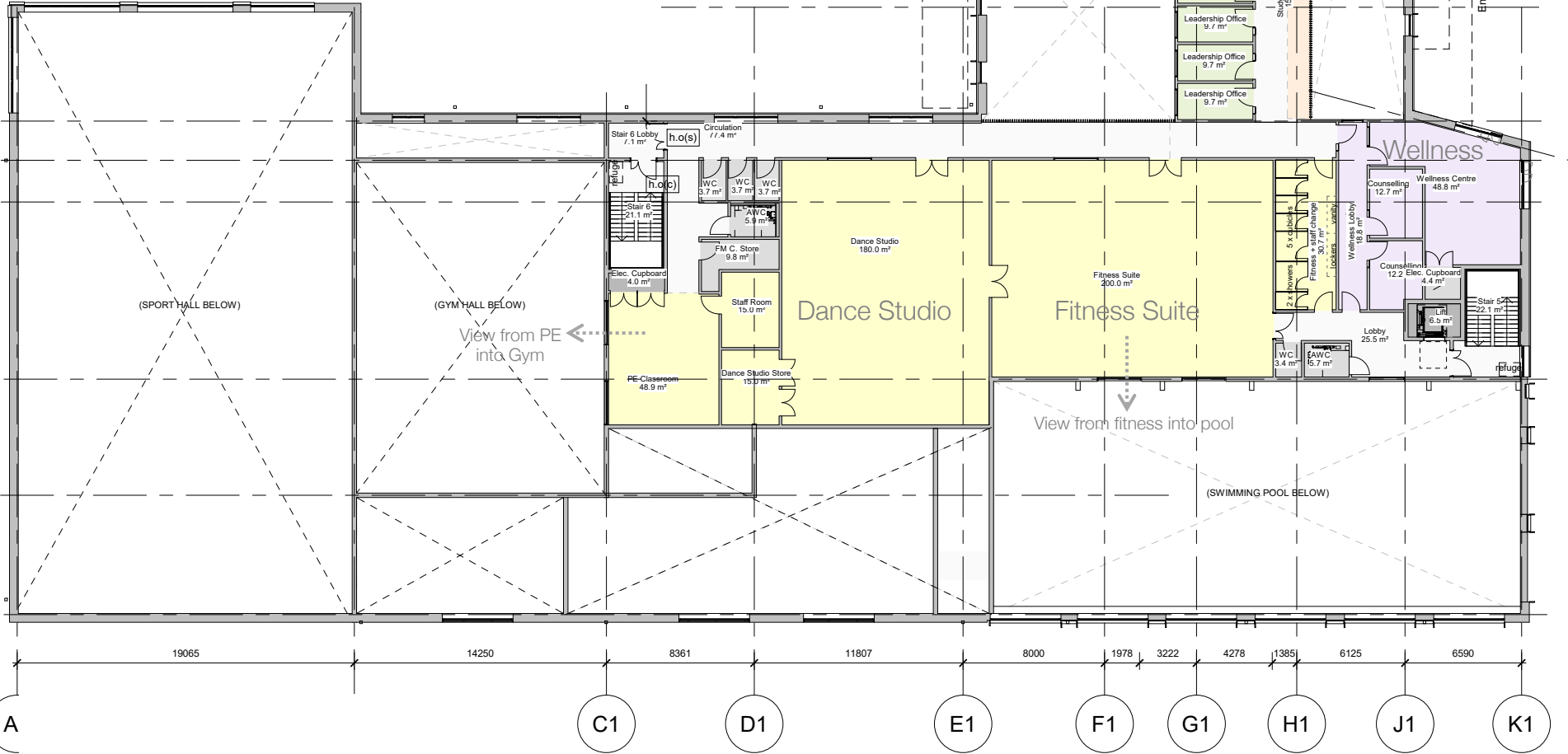
View 2 - from second floor department entrance



View 1 - towards breakout and terrace from North Teaching Kitchen

Health & Wellbeing

Sports Block – First Floor



(SPORT HALL BELOW)

(GYM HALL BELOW)

View from PE into Gym

Dance Studio

Fitness Suite

View from fitness into pool

(SWIMMING POOL BELOW)

Wellness

Entrance canopy below

Revised building

Updated visuals



Front Approach



Rear Approach

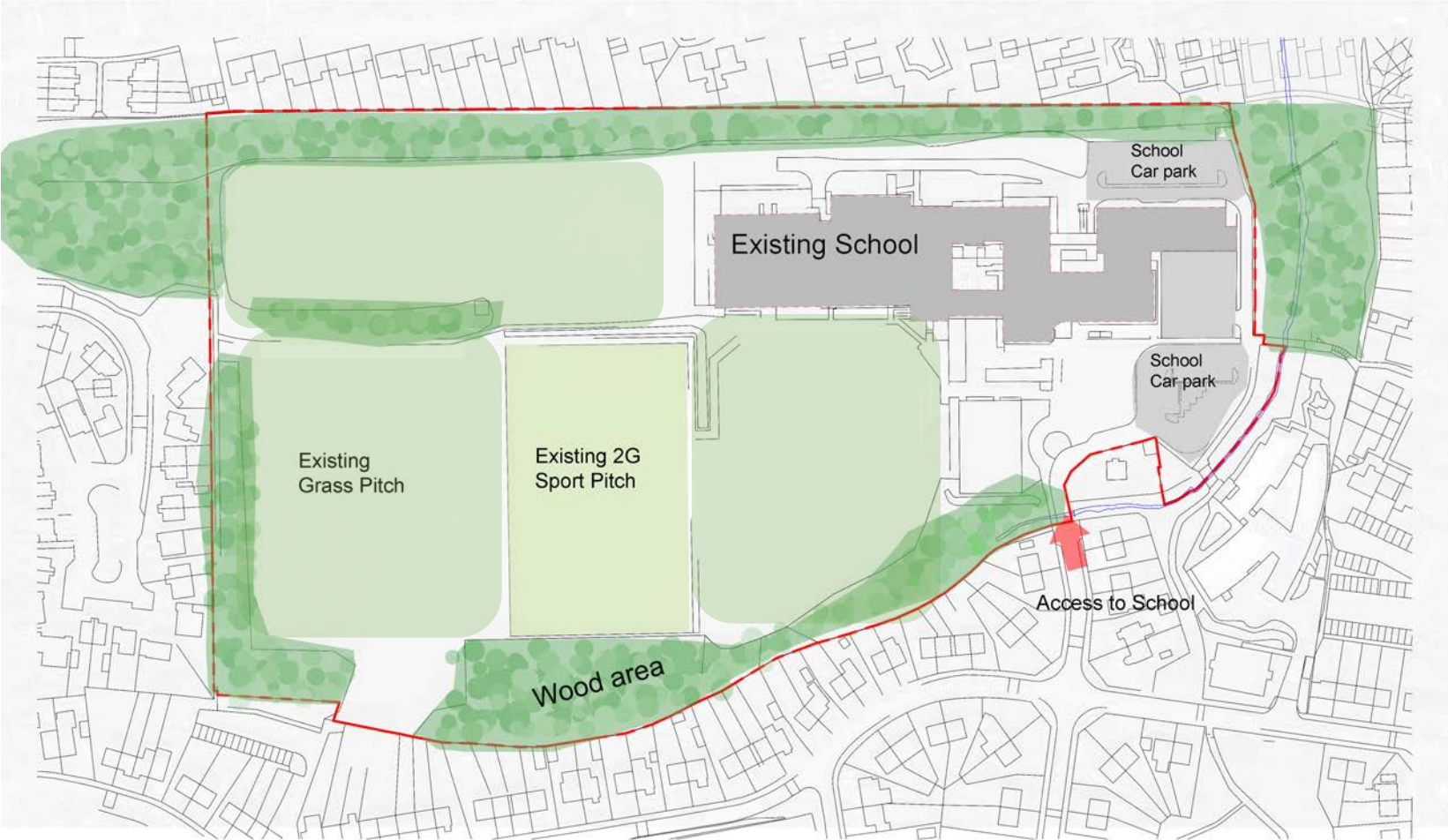
Currie Community High School

Phasing Strategy



Phasing Strategy

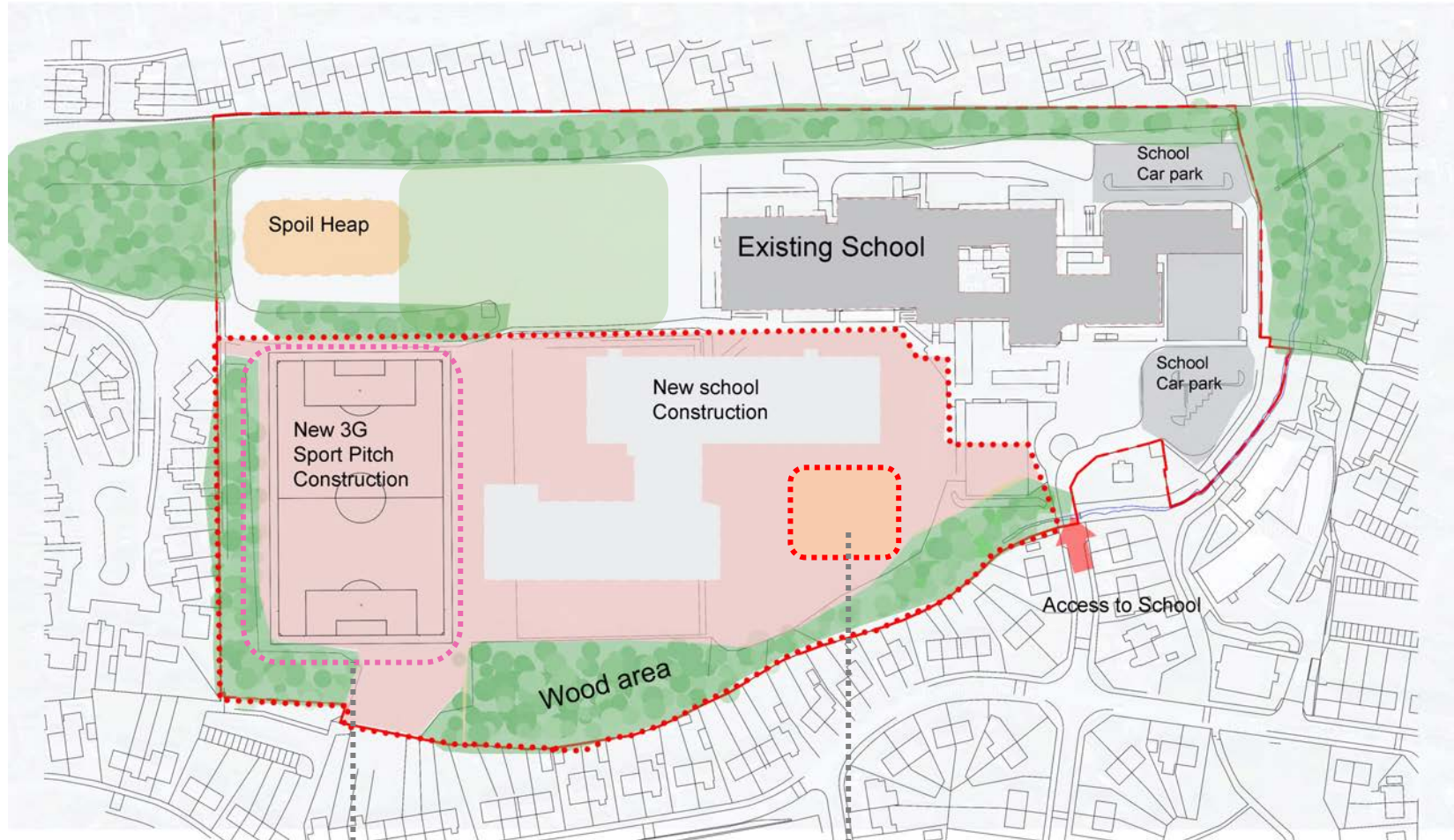
Existing Site



Phasing Strategy

Phase 1– New School Construction (2022 – 2024)

Existing School in operation during construction of new building



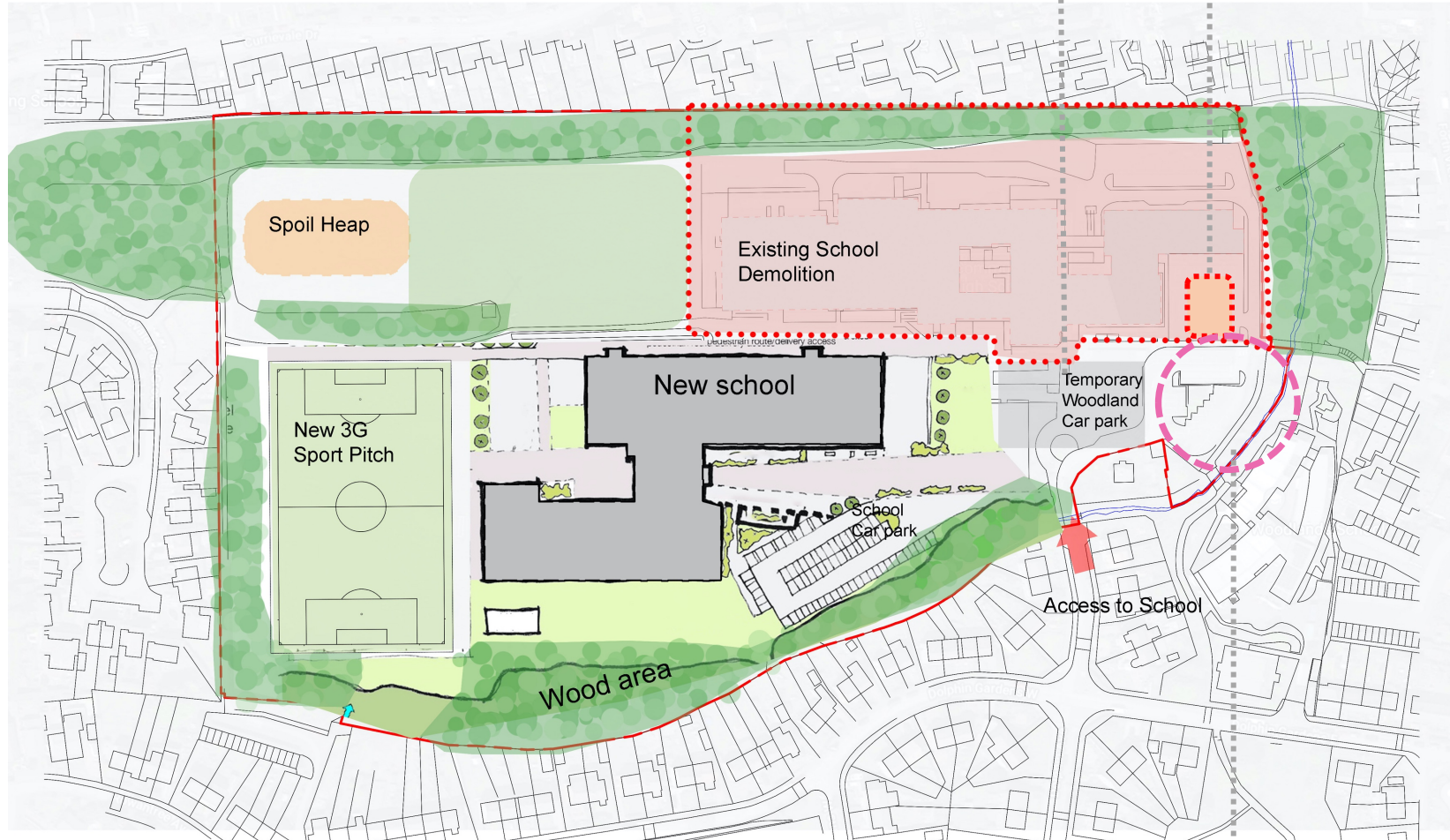
Proposed early provision of 3G pitch ahead of new school construction
subject to feasibility to allow for use during construction works

Site compound

Phasing Strategy

Phases 2A and 2B – Demolition of the existing school building (2024 – 2025)

New School in operation during demolition works



Temporary Woodland car park

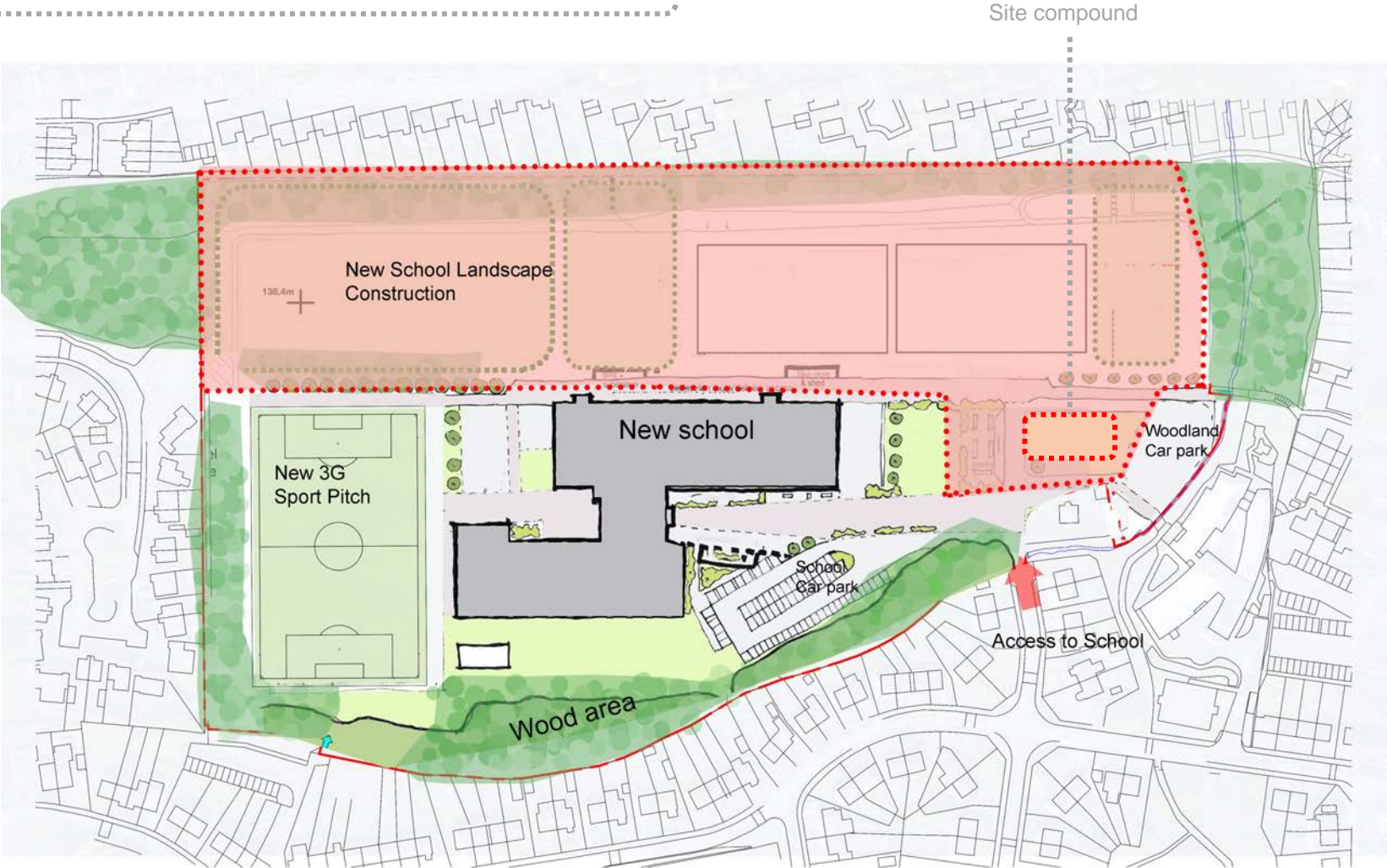
Site compound

Upgrade works to Woodlands carpark

Phasing Strategy

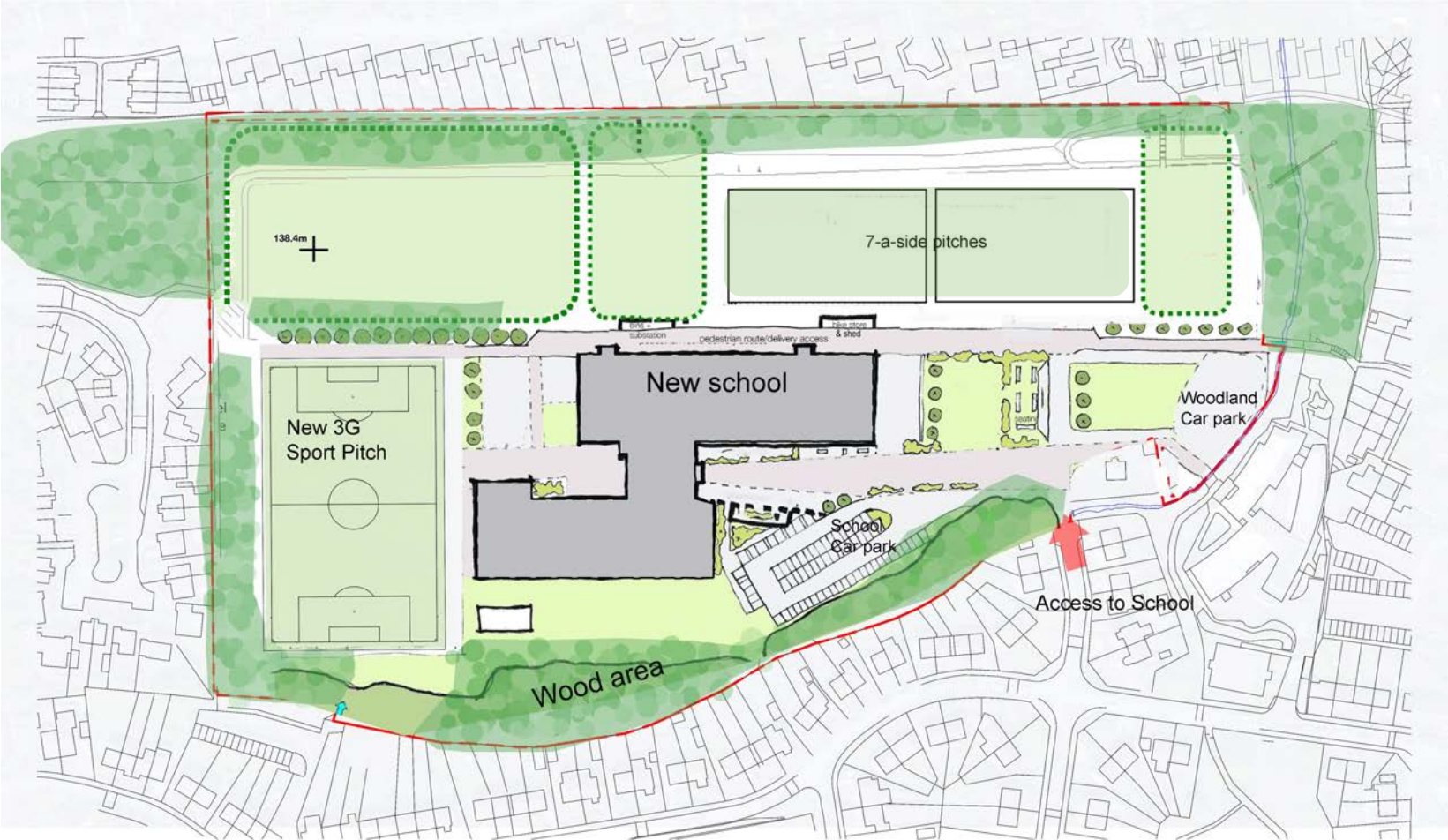
Phase 2C and 2D – New Landscape (2024 – 2025)

New School in operation while remaining landscape works are undertaken



Phasing Strategy

Project Complete – school building, demolition and landscaping complete (2025)



Currie Community High School

Landscape Presentation
(Wardell Armstrong)
+
Questions and Answers

