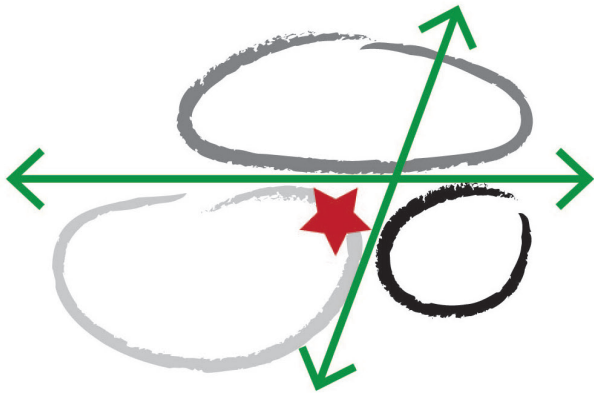


Currie High School
Landscape Layouts
January 2021



Currie High School

Design Principles



**CLEAR HIERARCHY
BETWEEN PUBLIC,
COMMUNITY AND SECURE
SCHOOL GROUNDS WITH
THE SCHOOL AT THE NODE**



**PERMEABLE WOODLAND
BOUNDARY TO CREATE
A CENTRAL COMMUNITY
PLACE WITHIN CURRIE**

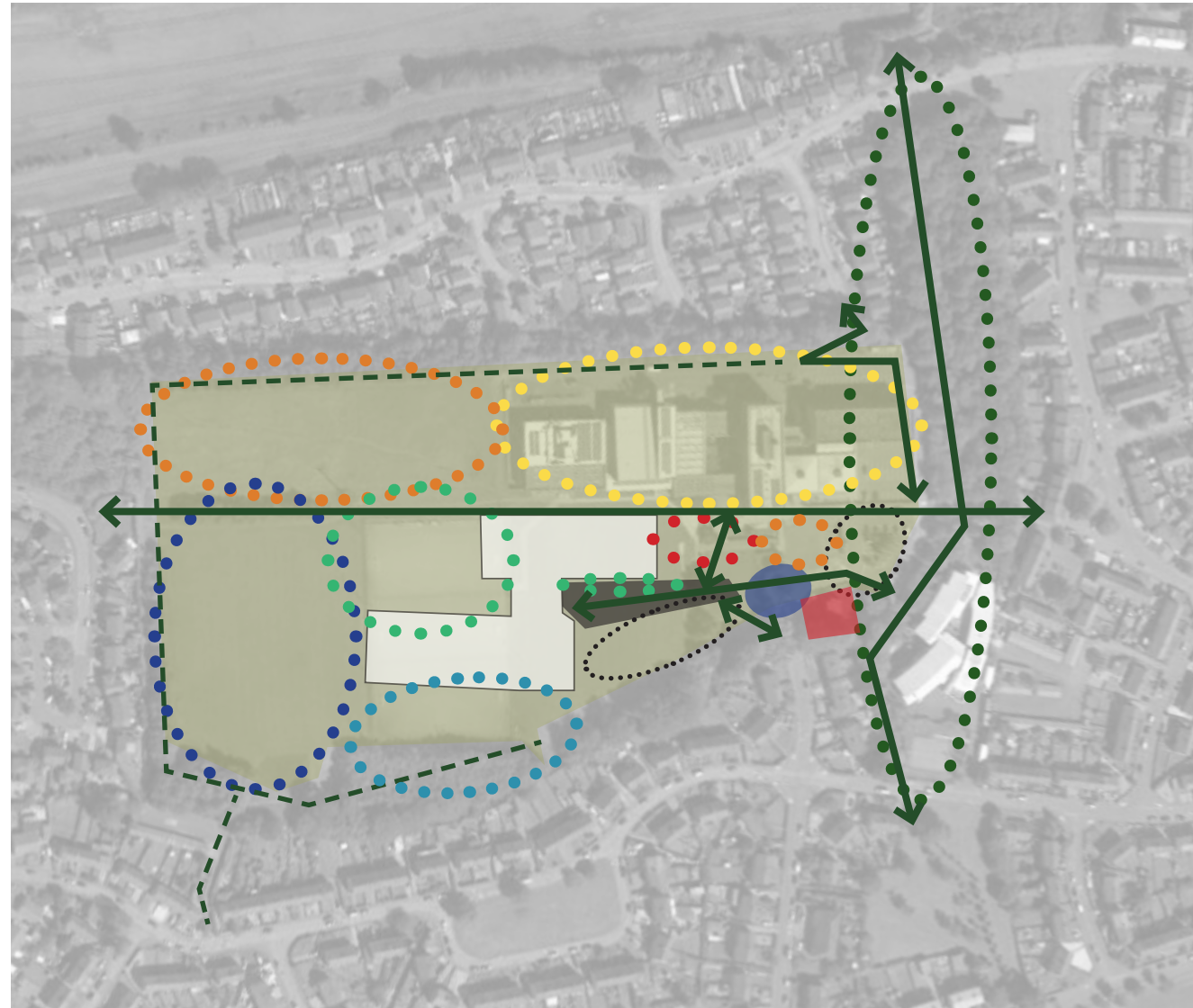


**SCHOOL AND
EDUCATION WEAVES
THROUGH THE
LANDSCAPE**

Currie High School

Proposed zoning

-  Primary pedestrian / cycle route
 - School and Community use
-  Secondary pedestrian route
 - School sensory woodland walk
-  Vehicular access route improved
-  Council House - formalised frontage,
 access and improved boundaries
-  Parking and drop off zone
-  Formal High School Frontage, cafe
 seating, cycle storage, seating
-  Shared crossing plaza - clear
 pedestrian and cycle priority - design
 to enhance visual connection to
 school entrance - opportunity to
 prioritise East/ West connection
 between school frontages
-  Free natural play zone / outdoor
 learning - connection to the woodland
 boundary
-  Sports
-  Main spill out space, outdoor eating,
 outdoor classroom, informal fitness
-  Practical workshop space, growing
 space, eco-exploration, sensory, Health
 & Wellbeing habitat
-  Shared sports facilities - school
 and community, space for a future
 Community Allotment
-  Field / open space
-  Enhanced green corridor - shared
 school and community space, nature
 based outdoor learning



Currie High School

Final Concept Design

Grass pitches, athletics and seating terraces

East-West Avenue widens to accommodate classroom spill out, cycle shelters and maintenance access

Field

East-West Avenue connects key site entrances with the school

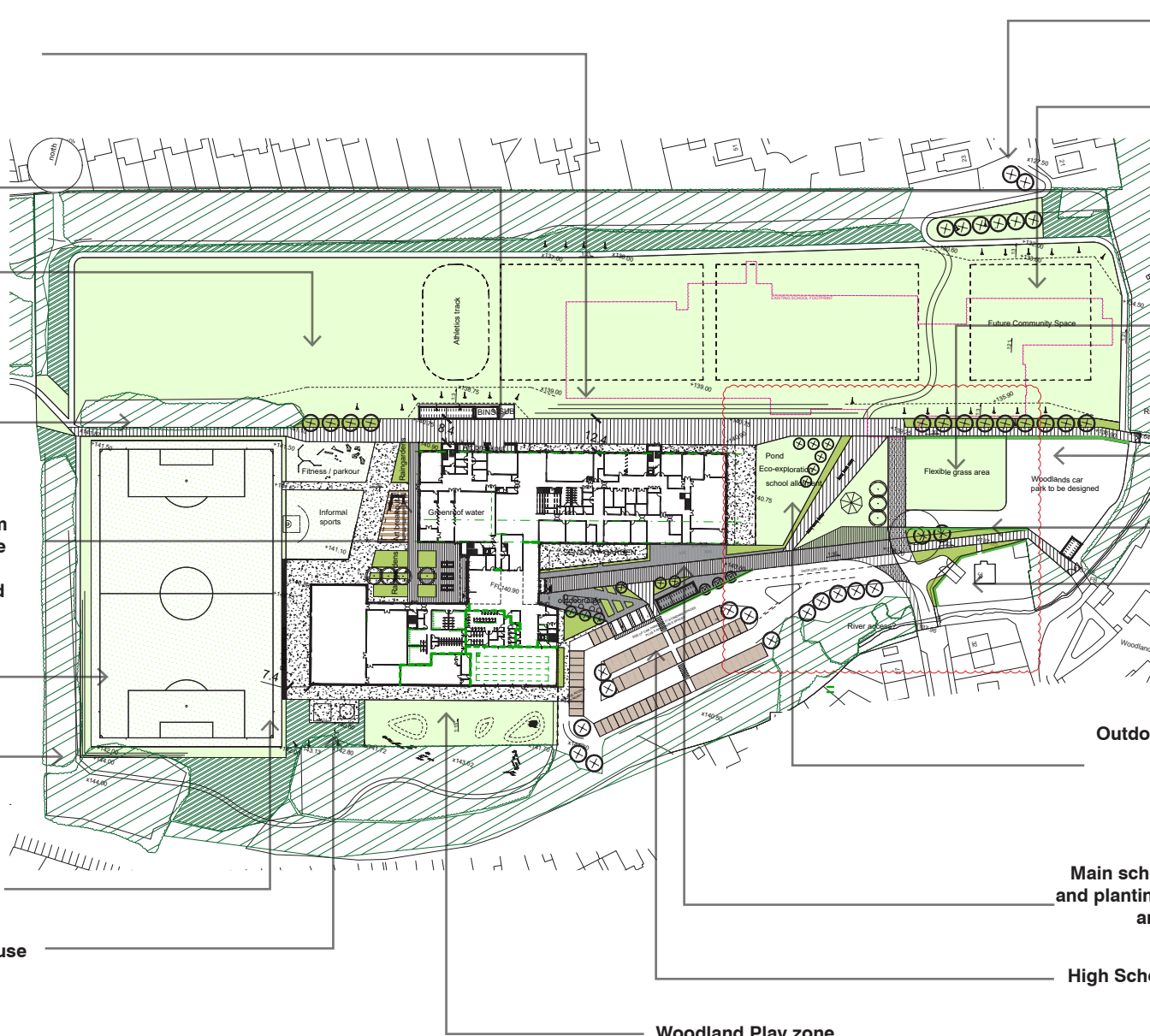
Main school playground including Outdoor classroom / amphitheatre, shelter, stage space for drama spill out, informal sports & fitness and spill out seating from the cafeteria

3G pitch with spectator terracing

Existing woodland boundary enhanced and retained around the site

Seating / rain terraces

Sprinkler tank and pump house



Accessible route leading from the train station

Space safeguarded for a future Community Garden and Allotment

Temporary space for school events

Car parking to Woodland retained

Key avenue connecting the two schools

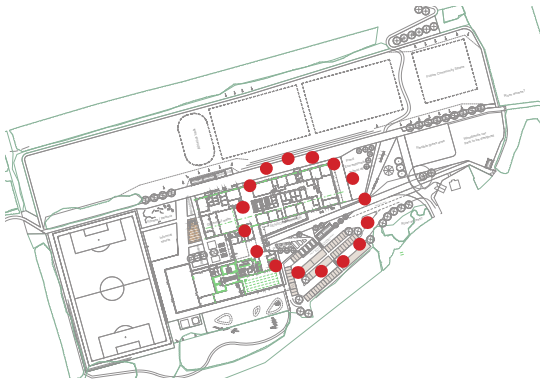
Council House land retained with minor adjustments. Driveway relocated directly onto the road with pedestrian access to pedestrian only route

Outdoor Learning Hub - space for growing, eco-exploration, fruit trees, outdoor classrooms, sensory planting

Main school frontage including feature paving and planting, cafe space, seating, cycle parking and a direct access to the ASN garden

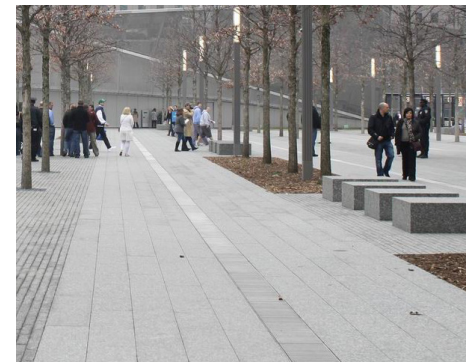
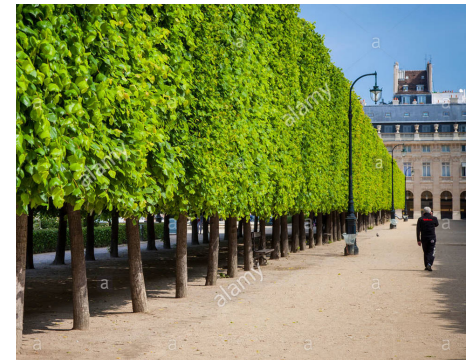
High School car park

Woodland Play zone



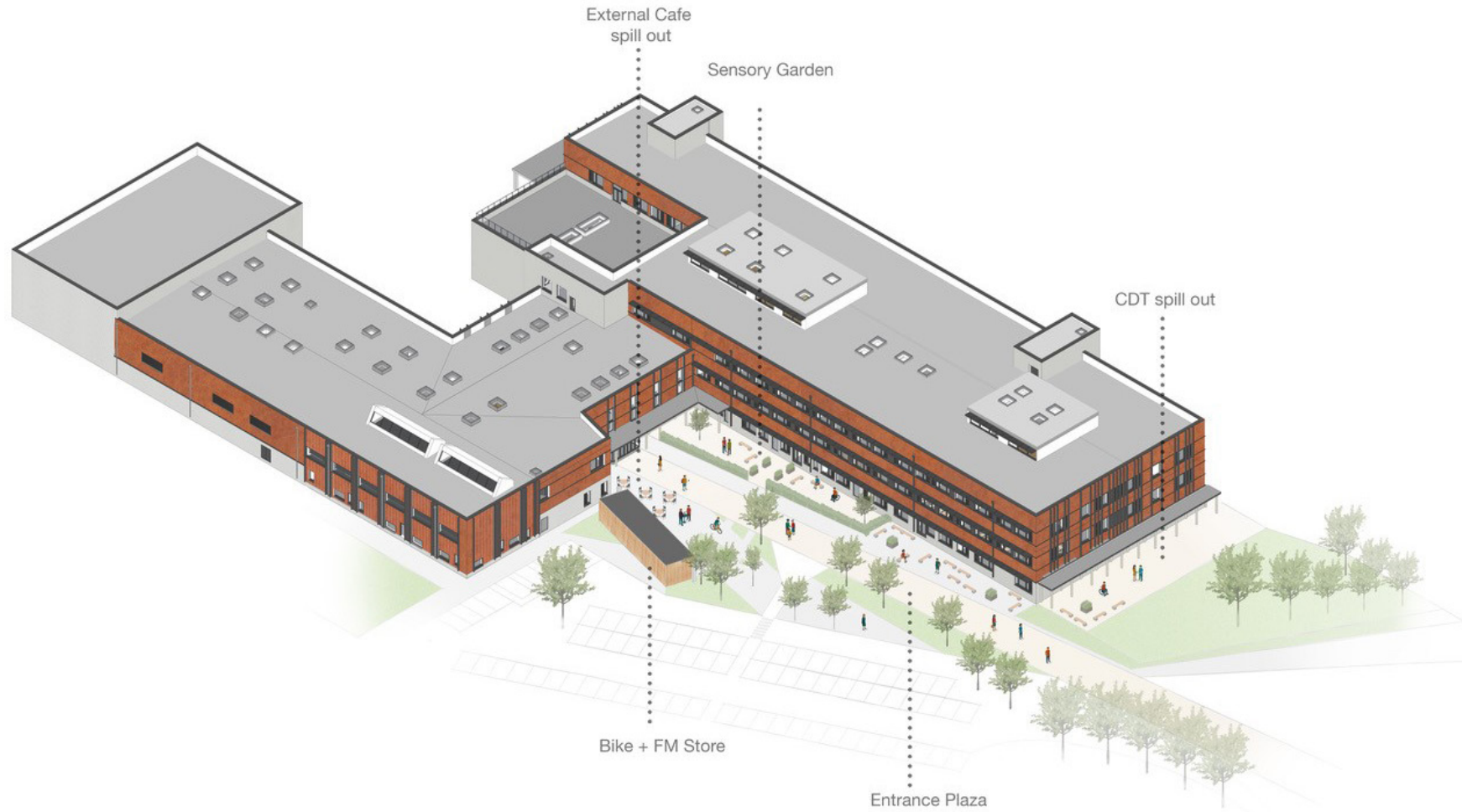
School Frontage

- **High quality materials palette, complementing the architecture**
- **Clear wayfinding and access routes**
- **Spaces to sit, wait and meet friends, as well as learning opportunities**
- **Attractive and welcoming**
- **Cafe outdoor seating**
- **Direct access to car park and bike store**



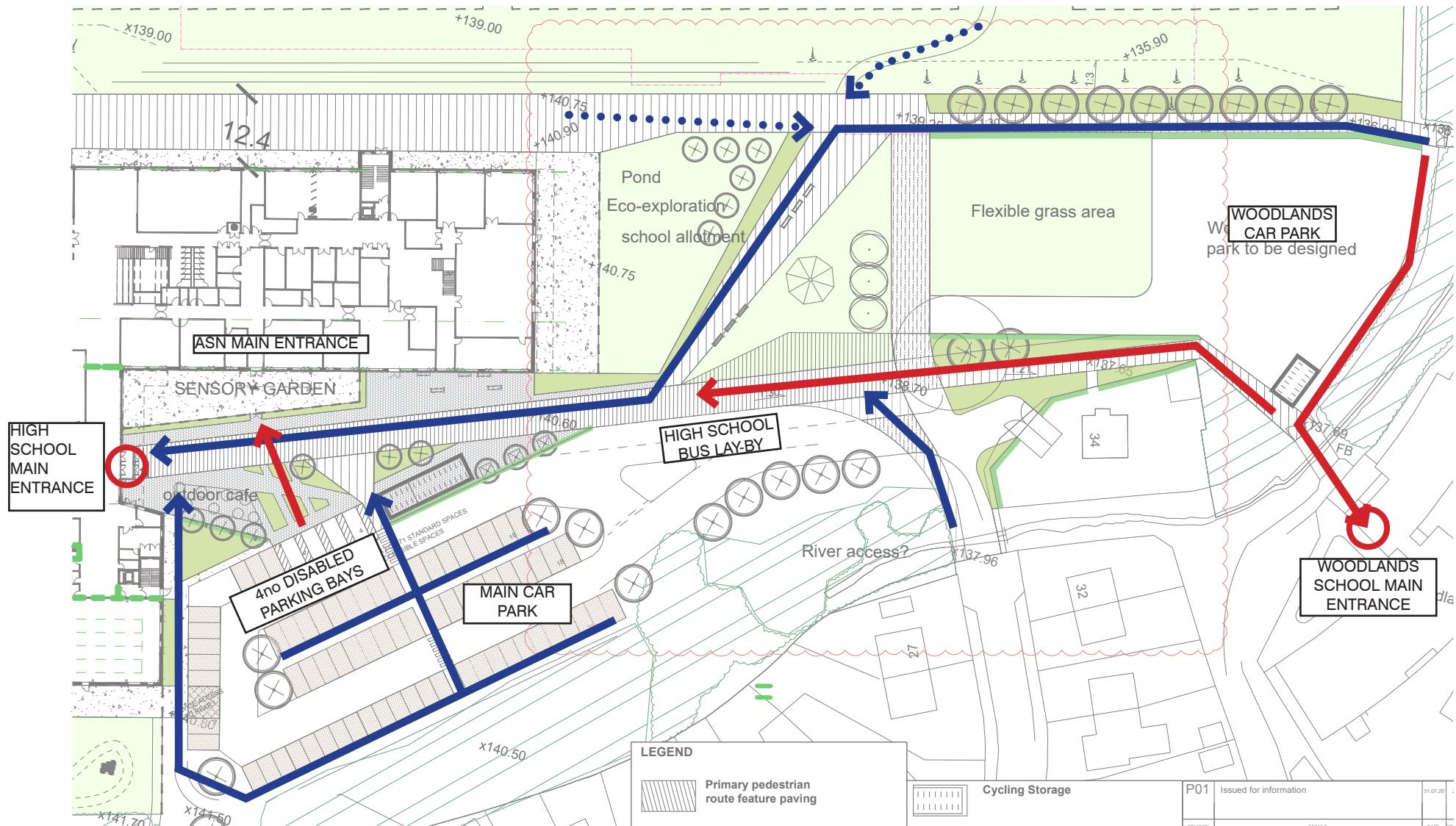
Currie High School

Active Frontage



Currie High School

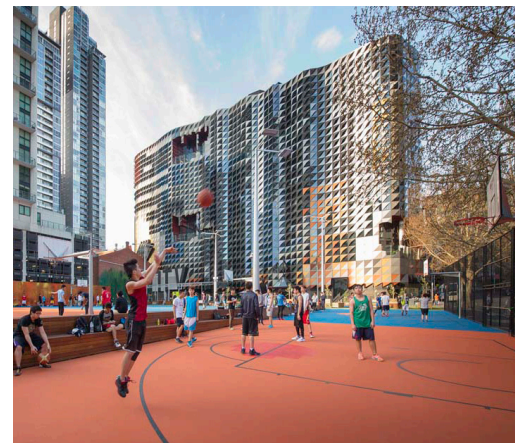
Parking and Access

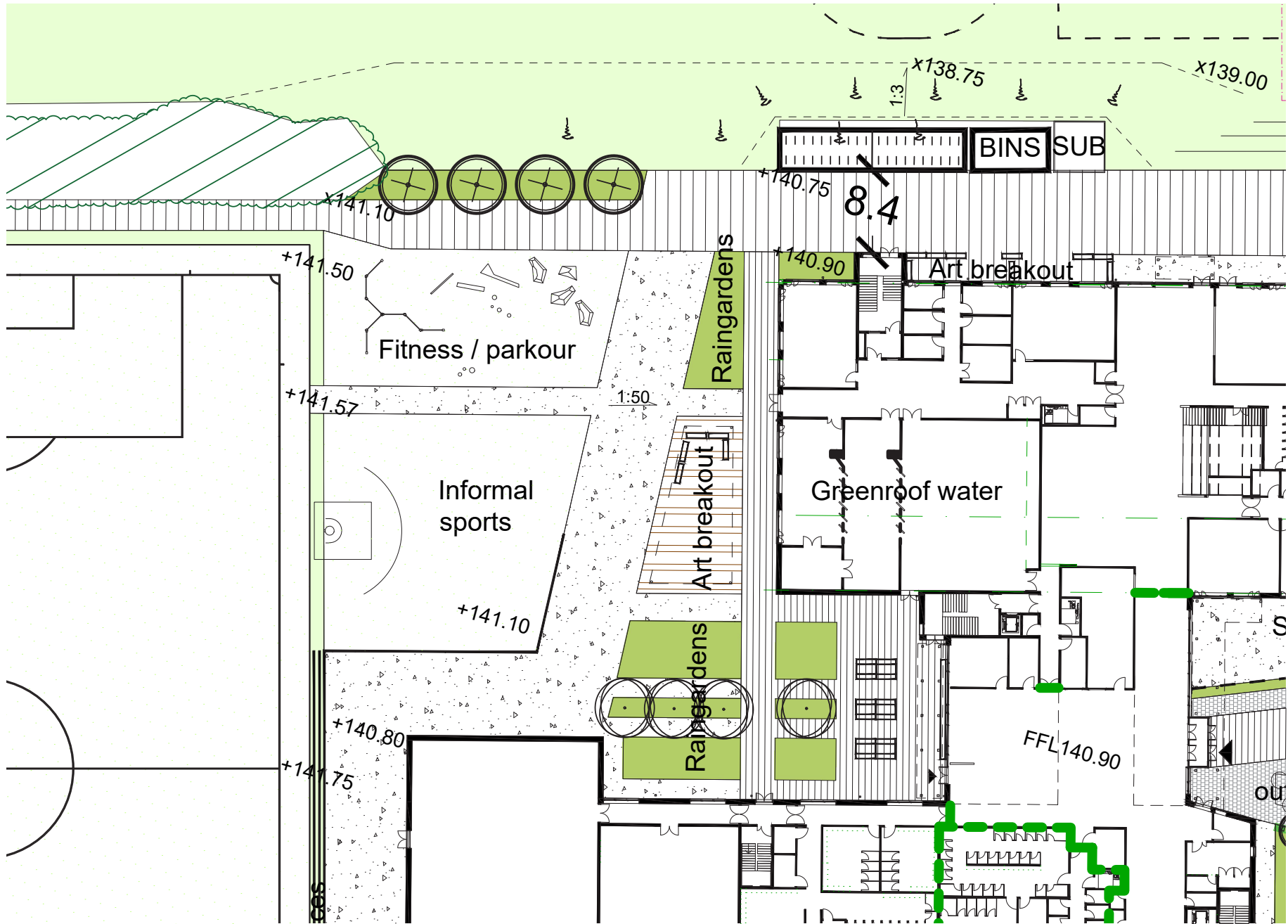


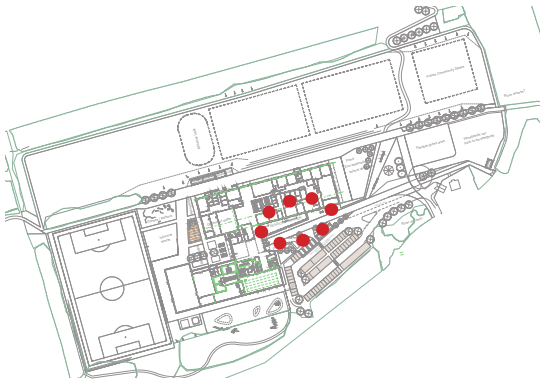


Main School Playground

- *Variety of scale and space to cater to a range of groups and users*
- *Shelter to encourage use in all weather*
- *Raingardens*
- *Spaces for outdoor teaching such as amphitheatres, seating or a stage for drama spill out*
- *Vehicular / fire tender access disguised within the landscape*
- *Height, colour and planting to encourage year round interest and interactive engagement with the landscape*

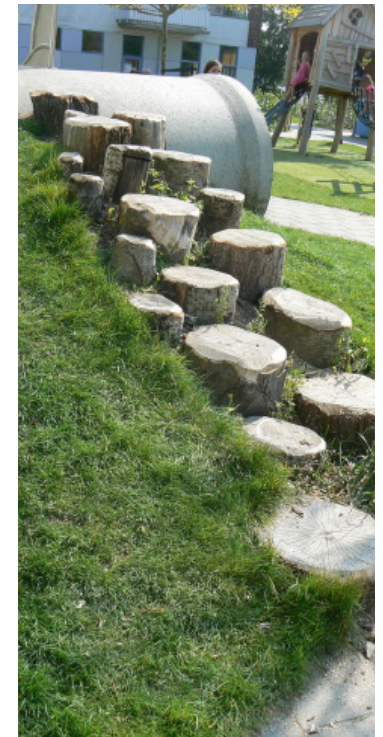
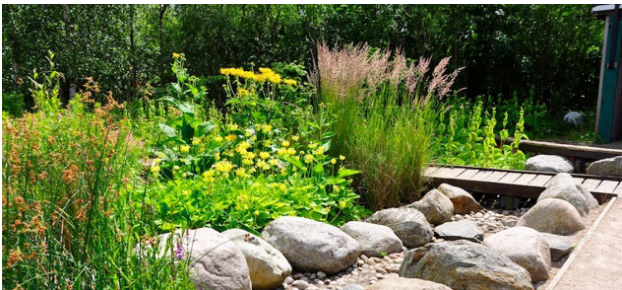


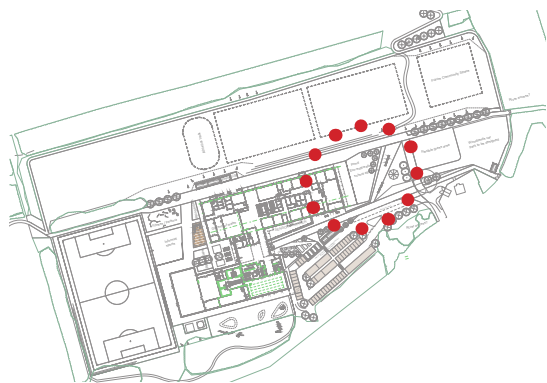




ASN Garden

- *Fully accessible landscape, suited to all users*
- *Muted materials palette and carefully selected sensory planting*
- *Sheltered opportunities for outdoor learning and safe classroom spill out*
- *Range of textures and challenges to support a variety of needs and abilities*
- *Spaces for the users to plant and develop their garden*
- *Secure timber fencing, softened by planting*

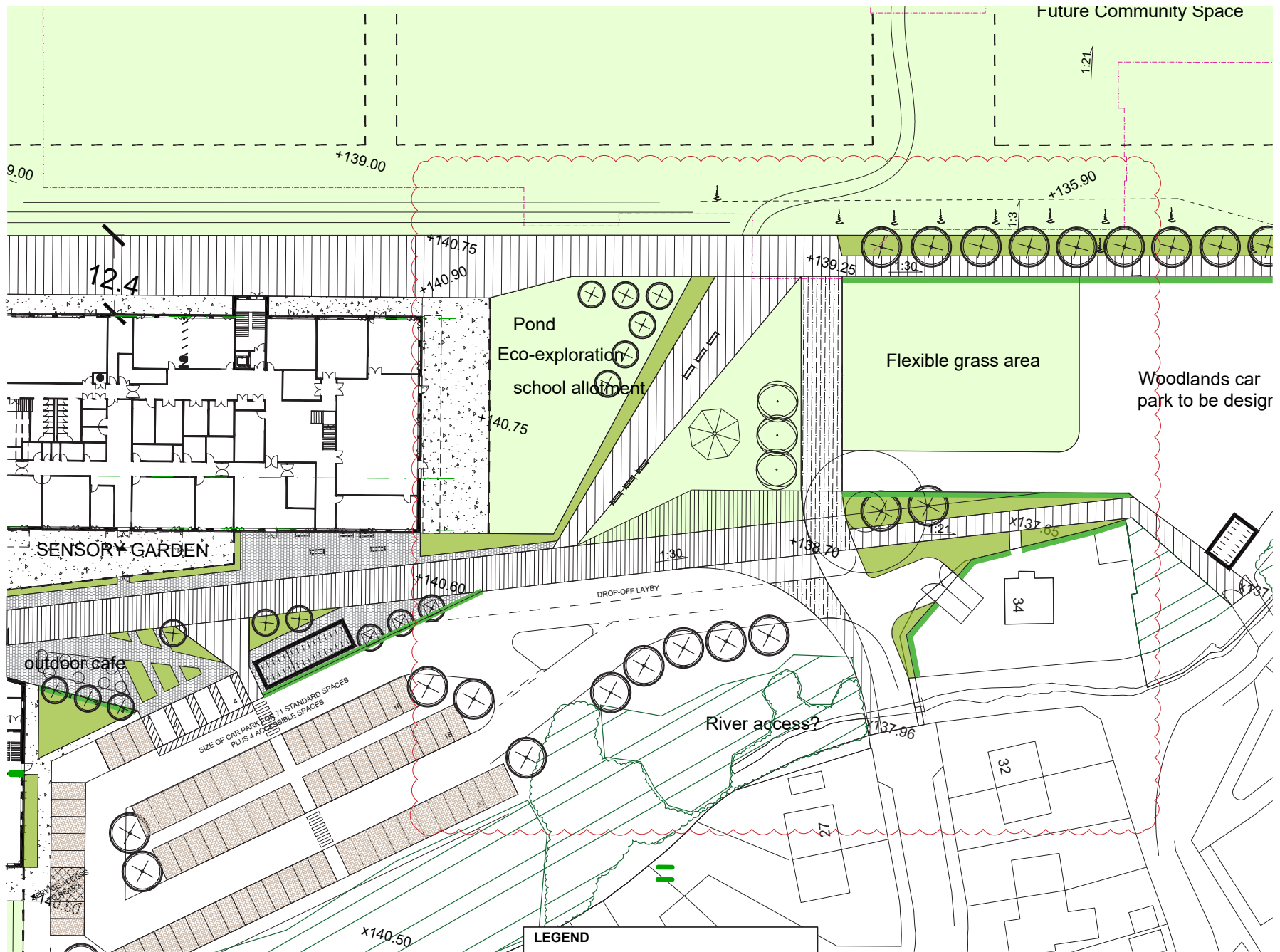




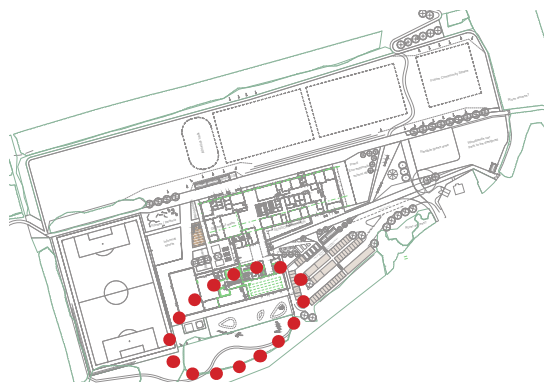
School Outdoor Hub

- *Space for growing, eco-exploration, outdoor lessons, habitat creating, fruit trees and a future pond*
- *Connection to Skills Yard*
- *Spaces for student and community well being*
- *Semi-private space can act as a learning space and a space to hang out in and out of hours*



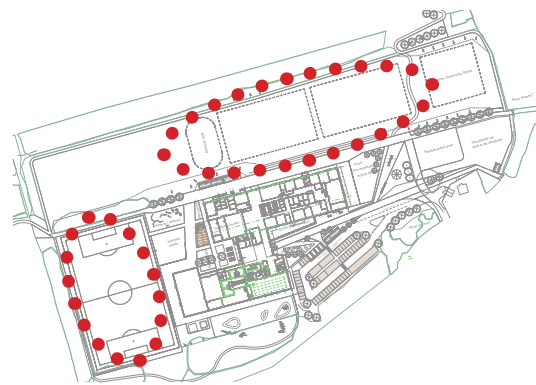


LEGEND



Woodland Play Zone

- Quieter zone with direct access into the surrounding woodland resource
- Opportunity for structured outdoor learning
- Active, informal, natural play features



Sports & Amenity Space

- Formal, fenced full size 3G football pitch
- Informal grass pitches within the open community space
- Informal path runs through and around the surrounding woodland edge
- Space for further school / community amenity assets such as mounding,

