

Currie Community High School

Site Overview



1 Existing School Building



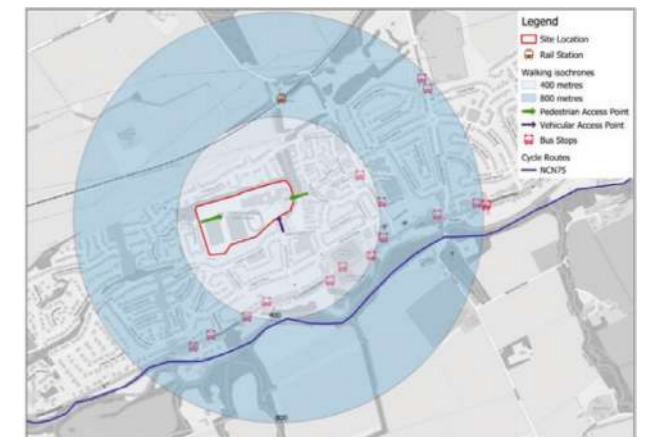
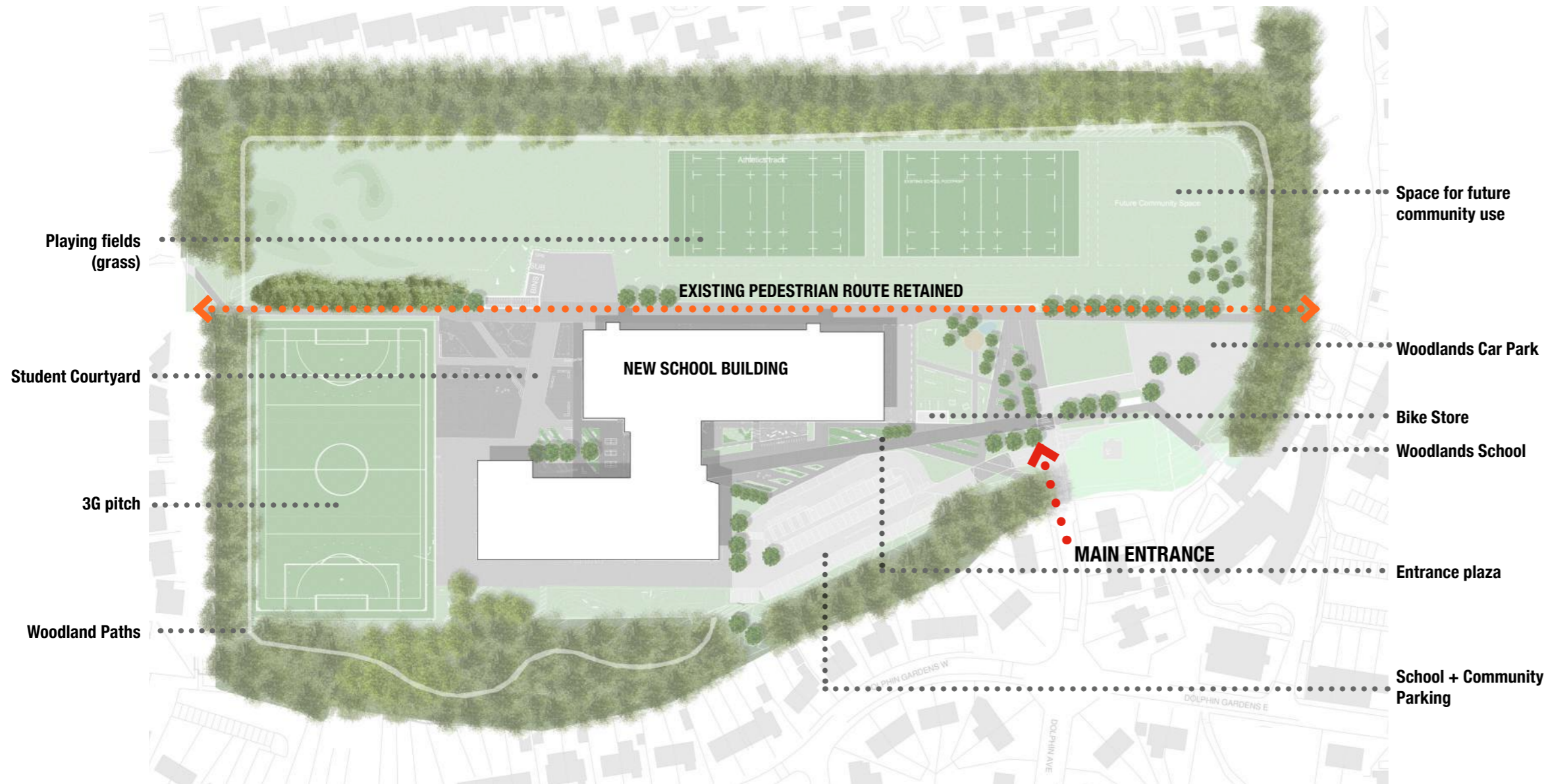
2 Woodlands School



3 View from the west site entrance

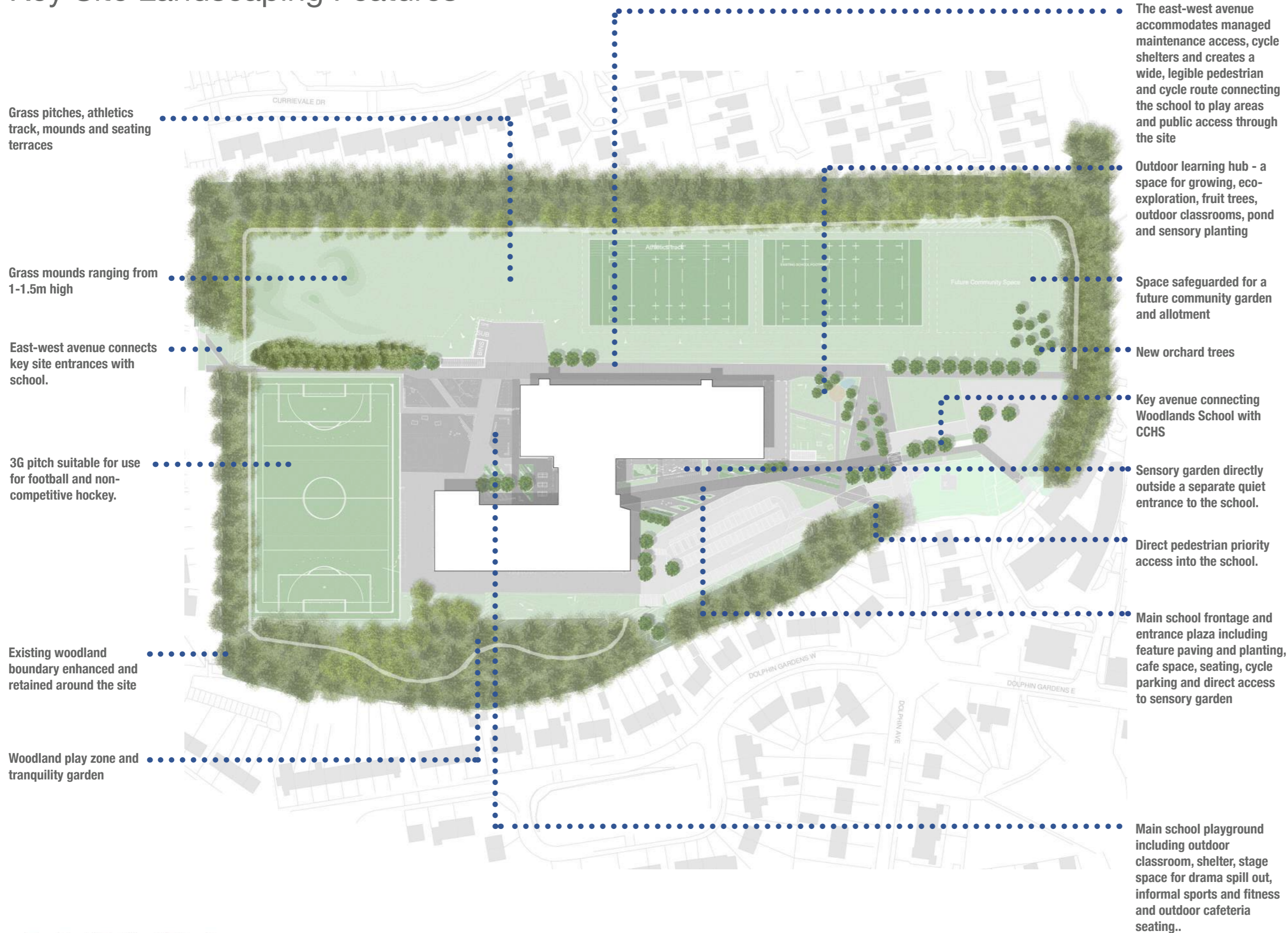


Existing Site



Currie Community High School

Key Site Landscaping Features



Precedent image: east-west avenue character



Outdoor learning hub



Precedent image: example of sensory garden space



Precedent image: example of character of main entrance plaza



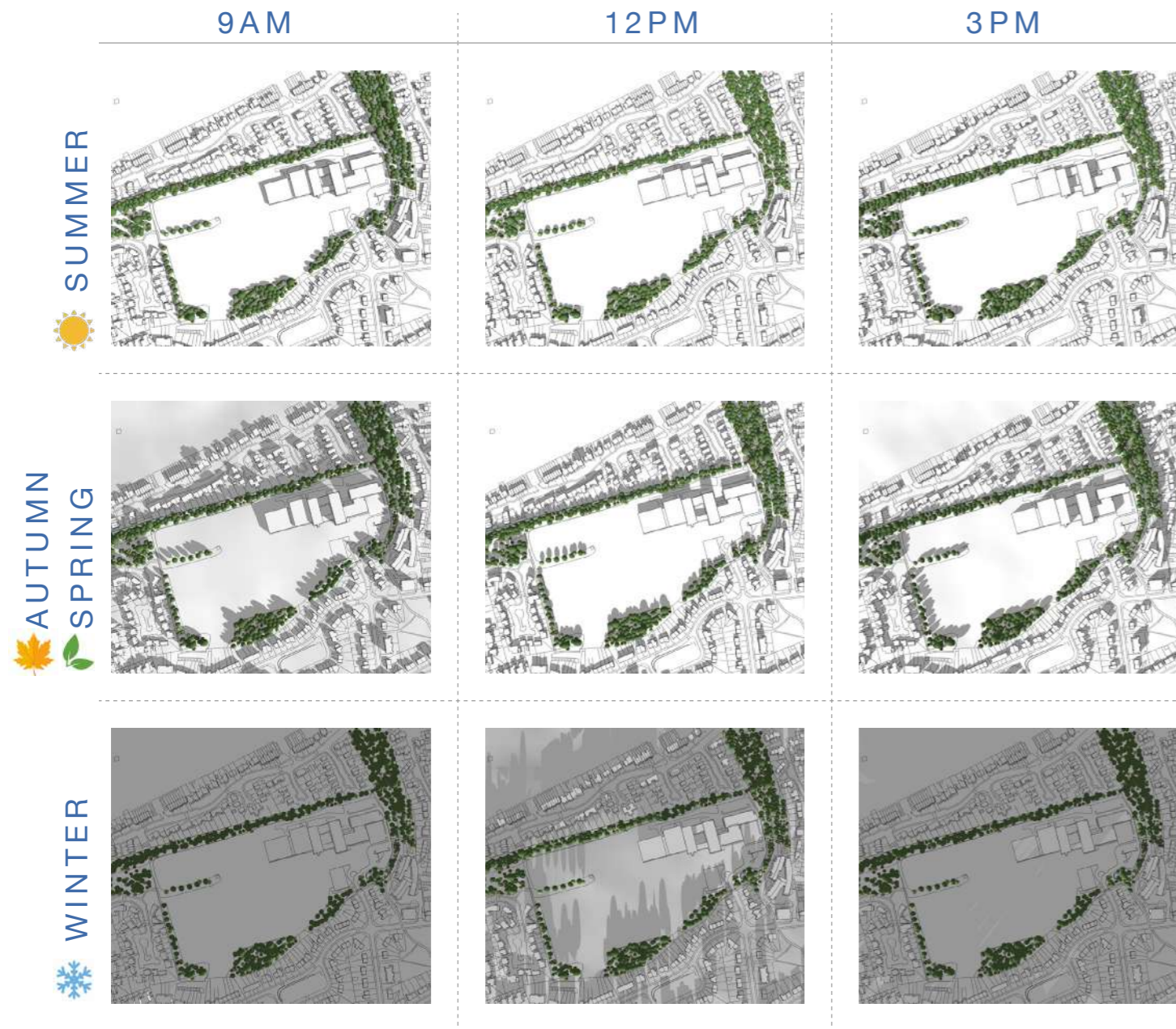
School playground

All photograph images shown above are example images illustrating the proposed character of the various spaces.

Currie Community High School

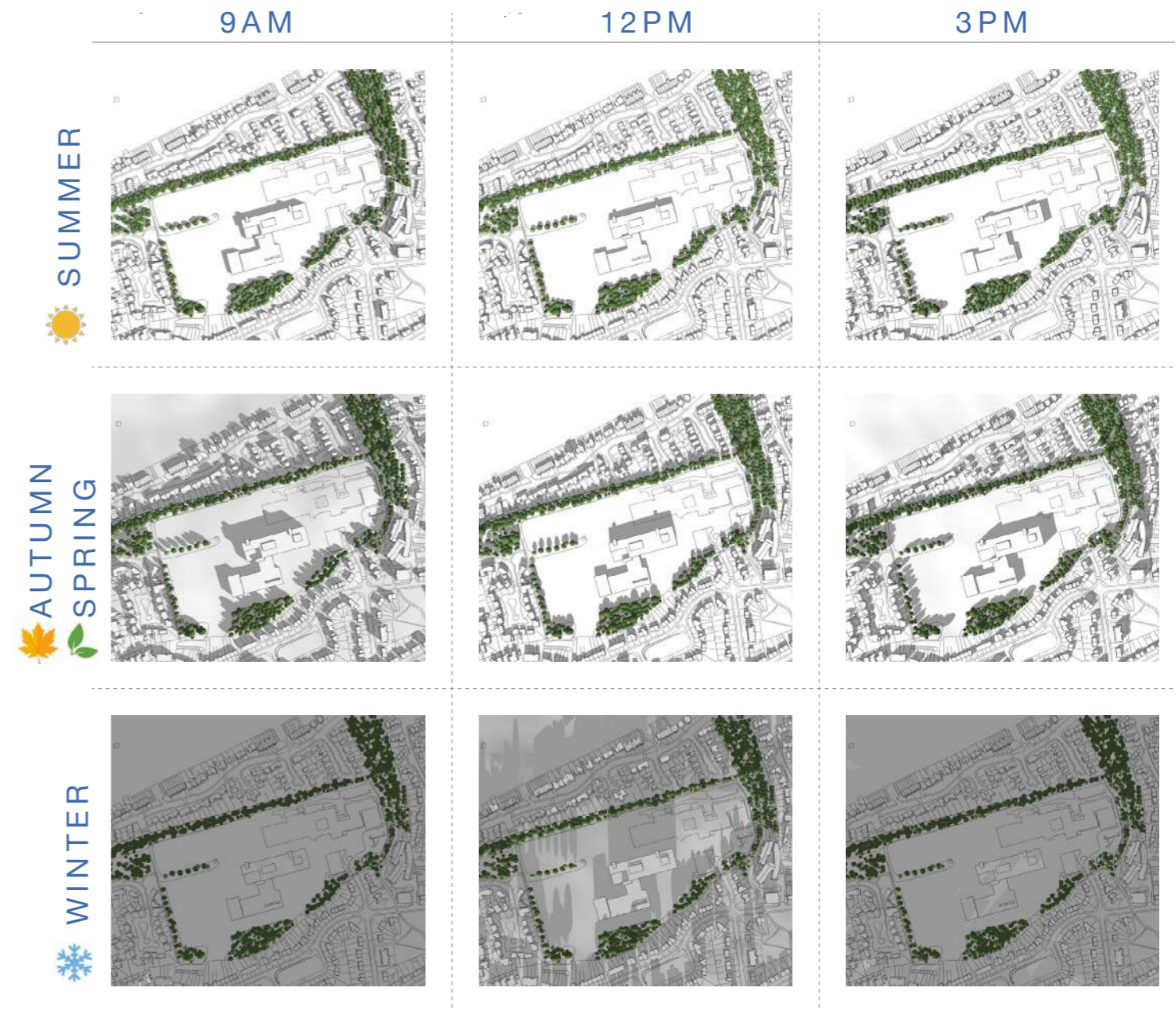
Sun Studies - Proposed vs. Existing

EXISTING SCHOOL STUDY



The images above illustrate indicatively the shading at different times of day and year as a result of the existing school building.

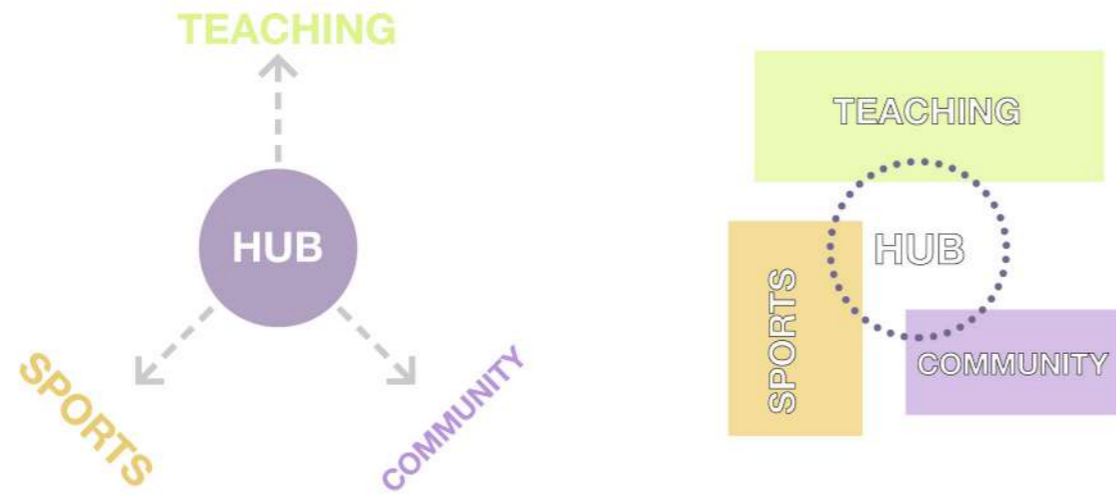
PROPOSED BUILDING STUDY



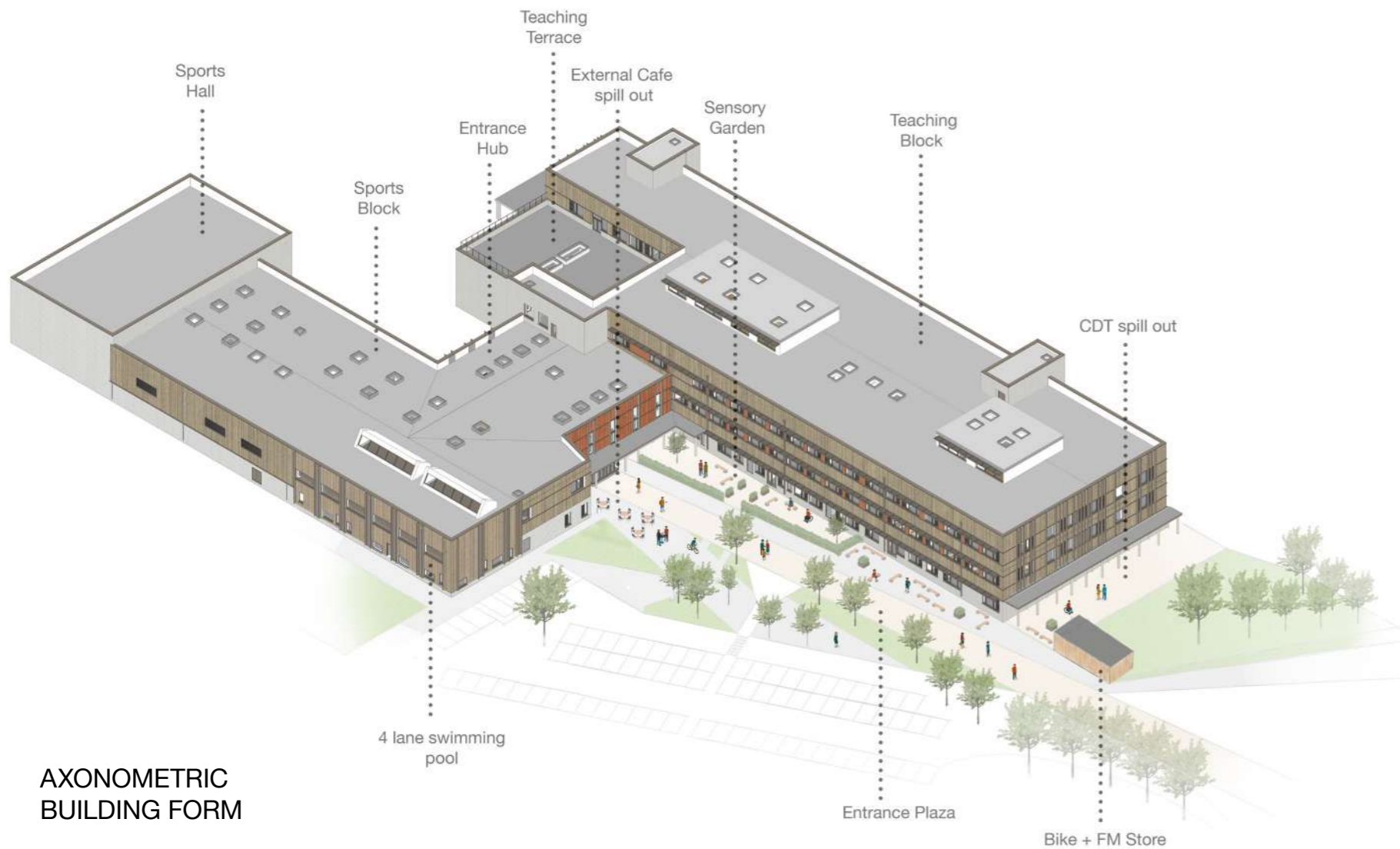
The images above illustrate indicatively the shading at different times of day and year as a result of the proposed new school building.

Currie Community High School

Concept + Massing



CONCEPT



AXONOMETRIC
BUILDING FORM



APPROACH FROM EAST - MAIN ENTRANCE



APPROACH FROM WEST - STUDENT COURTYARD

Currie Community High School

Accommodation Overview

- Community access
- Admin
- FM/Plant
- Dining + Catering Kitchen
- Expressive Arts
- Integrated Support Zone
- STEM
- Language + Humanities
- Health + Wellbeing

