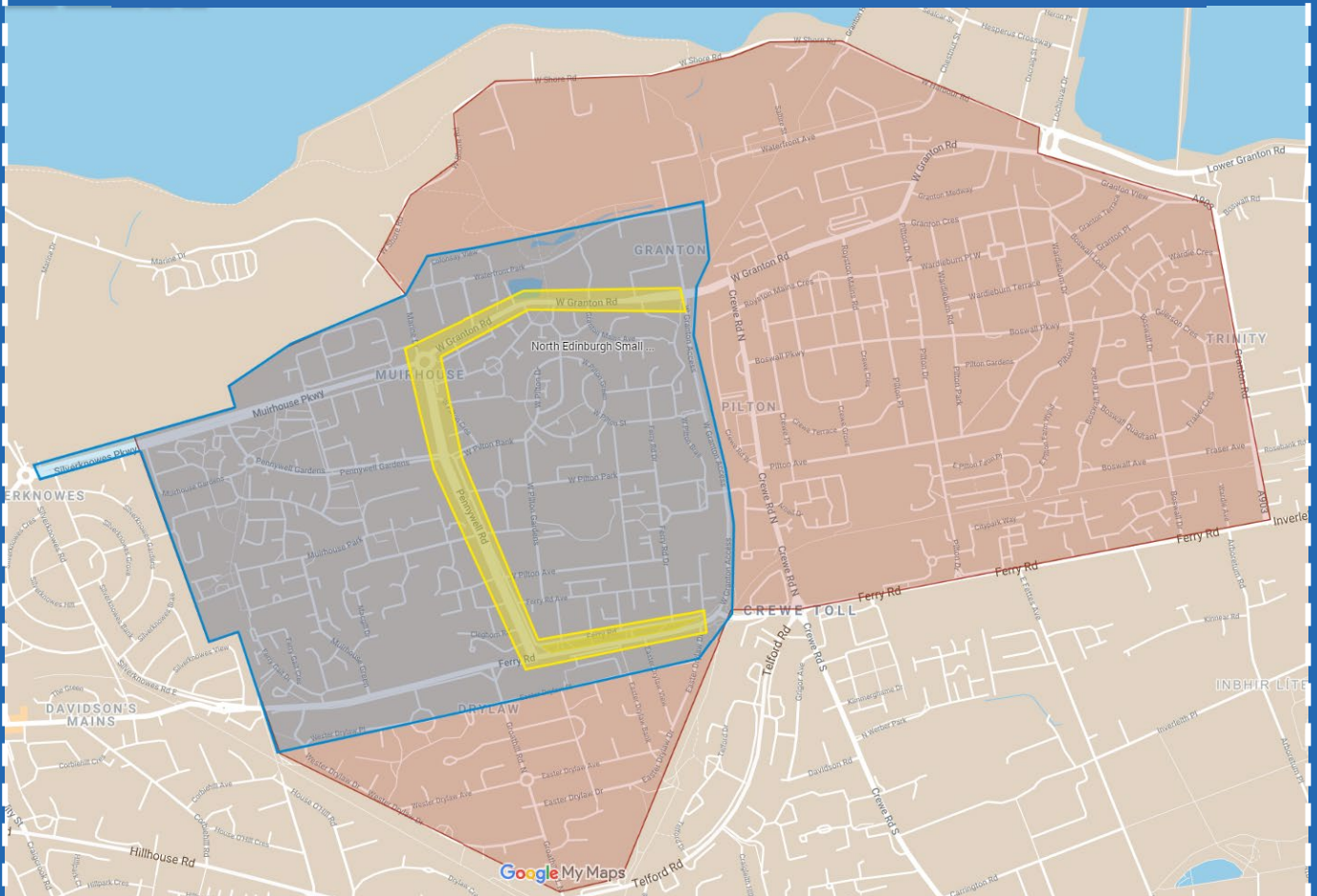


NEAT

North · Edinburgh · Active · Travel

CONNECTIONS

Community Action plan



Developed in Partnership with community groups and organisations from across North Edinburgh Small Area.

May 2021

Background:

This action plan has been developed with local community groups and organisations in the North Edinburgh Small Area as part of NEAT Connections. NEAT Connections is a project being led by City of Edinburgh Council to make it easier to walk, wheel and cycle in the North Edinburgh area – the roads that might change are:

- Ferry Road from Crewe Toll to Pennywell Road,
- Pennywell road from Ferry Road to West Granton Road, and
- West Granton Road from Pennywell Road to West Granton Access Road.

And some of the surrounding area. This project is supported by the Places for Everyone programme, administered by Sustrans on behalf of Transport Scotland.

A full report detailing the area covered by the plan, engagement undertaken and development of the action plan with representatives and members of the North Edinburgh community is also available.

Aims of the action plan:

- Speak to people who live, work and socialise in north Edinburgh to find out what would help them to walk, wheel & cycle.
- Get walking, wheeling and cycling to be part of everyday life for everyone who lives, works and socialises in north Edinburgh.
- Work with the mix of people of all types and backgrounds in north Edinburgh to have a mix of activities and support they need.
- Do work that makes people feel proud of the area and helps communities to connect across north Edinburgh..

Get involved in delivering the action plan and shaping future activities:

As a local organisation:

- Join the NEAT Community Steering Group to represent a local organisation
- Tell the NEAT Community Steering Group of events/activities you are organising
- Share events and activities happening across North Edinburgh

As someone who lives in north Edinburgh:

- Join the NEAT Community Steering Group to represent your community
- Volunteer to lead walks or rides, or to support other activities
- Organise a local event
- Tell us what activities would support you to walk, wheel or cycle

Email: NorthEdActiveTravel@gmail.com

- to contact NEAT Community Steering Group
- or to ask for a list of organisations that the Steering Group works with.

Format of the NEAT action plan

The plan is split into two themes – Community and Environment. Each theme contains:

- What we want to see in North Edinburgh
 - How we will know if this has worked
 - Actions that can be done in and by the community,
 - Actions we are asking the Council or other public bodies to do – things that the community would like to see happen that they cannot do themselves or that are the responsibility of the council or another public body.
 - Specific Activities that could take place if the plan receives funding.
-

What do we need to be able to deliver the action plan?

Funding:

- to employ an active travel coordinator to lead on the plan and support local organisations to deliver activities.
- hold regular meetings of the NEAT Community Steering Group.
- for a small grants budget to pay for activities.

We estimate the cost for this to be approximately £50k per year.

We are asking City of Edinburgh Council to

- include this funding in their NEAT Connections budget.
- work with us to develop a sustainable plan to support active travel related activity within the community after the NEAT Connections project ends.

Community Theme

What we want	How we will know this has worked
It is normal to see people of all types and backgrounds walking, wheeling, and cycling	Seeing people who are like you (not just commuters)
	Accessible places - walking/wheeling/cycling opportunities exist for all ages and abilities
	Bikes and tools for maintenance are available locally, and people know how to use them.
Streets and Public spaces feel welcoming and safe, and are pleasant and well used	People of all ages, abilities and diversities feel comfortable using public places
	There is space for pedestrians, cyclists and cars and it is clear what space is provided for which type of user.
	A variety of community events take place across the area on a regular basis.
	There is a visible police presence on path networks
	Living conditions are improved for all - especially young people.
	There is less noise from vehicles
	Bike theft is reduced
	Antisocial behaviour is no longer an issue, especially inappropriate motorbike use
	Local organisations work together to provide a varied programme of events, information on events is easily available in a variety of formats.
	There are pleasant places to stop and rest/socialise throughout the area, with water, seating and toilets always available within a short distance
Access to nature and quality greenspace is plentiful	It feels Fun!
	There is a variety of greenspace available to enjoy - Wildflower meadows, more trees and wildlife.
	Landscaping near (and on top of!) bus stops/other waiting areas, seating, water stations, shelter and play opportunities are included.
	Area feels green instead of grey
	Cleaner air, area smells clean and fresh - flowers
Most is made of local views - sea and green/blue spaces	

Things that can be done in the community	Potential Delivery Partners
Work with younger people and schools to promote positive behaviours that benefit the community through activities that encourage walking, wheeling and cycling.	Community Renewal North Edinburgh Youth Work Consortium
Work with the North Edinburgh Community Market to have an active strand alongside market activities - bike repair/buddy schemes/cycle training/walking groups etc, and have a regular information stand with opportunities to sign up to other events/activities from organisations across the North Edinburgh Area.	SHED - NEA Community Renewal North Edinburgh Community Market ECSA
Share information across all the community hubs where people can get information on travelling actively, routes, amenities, and related events, creating a network of activity.	NEA Community Renewal Fresh Start PCHP Granton Goes Greener
Programme a series of local walking, wheeling/cycle tours exploring different routes - both for leisure and functional journeys - Tie these in with other activities - food, health, photography, history etc.	Community Renewal PCHP ELREC ECSA Cycling Scotland Paths for All
Hold 'Come and try' events so people can just have a go and experience different types of bicycles.	Community Renewal ELREC MYDG PYCP Cycling UK Fabb Scotland
Set up bike lending/sharing libraries for local use - ensure these are linked to cycle training opportunities.	ELREC

Things we want the council or other public body to do.	Potential Community Partners
Edinburgh Council and Police Scotland - Work with the community to provide an appropriate location for motorcycle users to go, and to reduce inappropriate motorcycle use.	North Edinburgh Youth work Consortium
Lothian Buses - Explore possibility of local shuttle bus service possibly on a demand responsive basis to provide access to local amenities not easily reachable by those with mobility issues.	PEP
Police Scotland - Regular police bike registration pop-ups, and safety advice sessions when out walking, wheeling and cycling around the area.	Shed – NEA Granton Goes Greener ECSA

Examples of possible community activity

Organiser	Activity	Resources/Cost
Sustrans and Craigroyston High School	Sustrans I Bike Officer working with Craigroyston High school on SQA bike maintenance qualification. Volunteer team can provide training for teachers & volunteers to be able to support/deliver the SQA.	Tools Staff time Training
Police	Carry out regular talks in local schools to discourage young people from becoming involved in motorcycle related ASB. A film 'Mummy's Boy' has been produced by local young people and is shown as part of this education.	Part of ongoing work
Police	Police have officers based at Drylaw who have an overview of motorbike calls and carry out longer term enquiries to identify and charge those involved. These are often time consuming enquiries involving tracing additional witnesses and viewing CCTV.	Part of ongoing work
Police	As well as regularly patrolling the walkways on foot and pedal cycle Police also have officers on off road motorbikes who can be deployed to give the walkways and parks attention when a particular issue is identified.	Part of ongoing work
Police	Police can hold events to provide Bike Register bike security marking, these are advertised on Police social media	Availability of Police Funds Capacity of Officers
Granton Goes Greener	Working with Granton Primary and local Scouts group to increase litter picking.	TBC
PCHP	Support people to make active travel trips.	N/A (funded by SCSP fund)
PCHP	Individuals or families take part in local walking events. Deliver 5 walking events that tie in with other activities - food, health, photography and history.	N/A (funded by SCSP fund)
PCHP	Deliver activities that use the arts, storytelling and food to ensure walks are fun, engaging and enjoyable for local people.	N/A (funded by SCSP fund)
PCHP	Families receive additional support to ensure any barriers faced in accessing walks are overcome.	N/A (funded by SCSP fund)
Spartans CFA	Weekly Walking Football	N/A Part of regular activity
SHED	Monthly Dr Bike Sessions at the Shed from	£3600 12 X 3 hour sessions with 2 mechanics. Based on £100/hour for two mechanics per 3 hour session.
NEA, SHED, Social History Group	Convert Tuk Tuk from motor power to ebike or electric – potential first vehicle in a community transport company to include various types of transport from Bikes/Ebikes/Cargo bikes/trailers through to small electric vans for community use.	Approx £6000 Includes new Batteries, and labour to convert the power.
Grass Roots Remedies	Seasonal Foraging walks with Grass Roots Remedies	£540 Based on 4 seasonal walks
ELREC	Regular Led Ride from NEA	£450 Based on £150 per ride x 3 rides
	Total Cost:	£10590

Environment Theme

What we want	How we will know this has worked
Streets and Public Spaces are kept clean, and well maintained	Sufficient bins are placed in required locations, and are emptied regularly
	Council and community work together to keep areas clean of litter
	Uplifts of large items are regular and free to those who cannot afford to pay
	Paths are cleaned and gritted when needed, and vegetation is cut back regularly
	Air Quality is improved
There are good links to wider transport network	People are aware of how far they can go without a car, and it is safe and convenient to walk, wheel and cycle.
	There are bicycle racks/car club/disabled parking & bus stops in close proximity to each other.
	Bus stops are accessible, and pleasant to get to and wait in.
	Regular shuttle service to access local amenities or transfer points to onward destinations.
	There are clear offroad/quiet links between areas of segregated paths (e.g. Crammond and Granton)
	Print information on local bus stops and timetables is available and can be sent directly to peoples homes.
	Public transport is sustainable, quiet and regular.
People in the area can easily and confidently report problems.	Everyone is aware of their local representatives and how to contact them (from local community councillors to MP's)
	People know where to find information on how to report issues of different kinds and who can help with this.
	Information on how to report issues is widely available in an easily understandable format.
	There is a network of people and groups within the community who can help with this.
Information on local routes, amenities and places of interest is available and accessible	Signage in and around the area is clear and accessible
	Route mapping and information is available in a variety of formats
	It is clear what type of transport is allowed/suitable for the infrastructure (e.g. cycle lanes are segregated from footways and roads, signage makes it clear when space is shared)
	Bus timetables are kept up to date
	Bus stops have digital displays showing bus times

Things that can be done in the community	Potential Delivery Partners
<p>Campaign to encourage a sense of pride in keeping the area clean and litter free. Organise local street clean-ups, regular litter picks and awareness raising activities across the community.</p>	<p>Community Renewal Granton Goes Greener Social Bite Village Scouts ECSA</p>
<p>Raise awareness of reporting mechanisms - Provide community with information on how to report issues such as flytipping, broken lights, damaged pavements etc., which departments deal with what, and who can help them to do this, Work with community organisations so that staff/volunteers are confident in supporting service users/residents to report issues.</p>	<p>SHED - NEA Community Renewal MHA MSCC Social Bite Village</p>
<p>Create local maps showing routes to amenities and places of interest - with public toilets, water refill points etc. marked. Make sure maps are accessible to all, available on and offline and include Wheelchair accessible routes.</p>	<p>NEA Community Renewal PCHP</p>

Things we want the council or other public body to do	Potential Community Partners
Project Team and Edinburgh Council - Ensure pavements are wide enough, and wheelchair accessible for all users, especially around bus stops.	
Project Team - Work with community groups to gather input from residents on identifying locations for: Seating, Bins, Shelter, Green Space, water refill stations; signage/information boards (including what they want signage/info boards to look like).	SHED Planning Aid Scotland
Edinburgh Council - Explore possibility for maintenance work in the area to be given to local social enterprises/community organisations – This would create jobs, maintain local areas and increase sense of pride.	Granton Community Gardeners
Edinburgh Council - Support community groups to make existing green spaces more attractive and to develop more community greenspaces across North Edinburgh - perhaps with a small grants scheme.	Granton Community Gardeners Granton Walled Gardens NEA
Edinburgh Council - Work with community to identify locations where more bins/rubbish collection might be required. Explore possibility of regular day for uplift of large items with the council (e.g. last Thursday of the Month), only charge for any additional items outwith this.	Community Renewal TRIM Zero Waste Scotland

Examples of possible community activity

Organiser	Activity	Resources/Cost
Granton Goes Greener Social Bite Village	12 litter picks in the north Edinburgh area, monthly.	Total: £1400 Promotion - £200 Equipment - £600 Refreshments – (£50/pick) £600
Granton Goes Greener Fetlor	Hold supply of maps to give out to community	Total: £1500 Designer £1000 Printing £300 Distribution £200 (on and offline)
Granton Goes Greener	Carry out engagement for project team/council to identify locations where more bins/rubbish collection might be required. conduct surveys etc. with residents as well promoting placement of skips for large items if this should be taken forward.	Approx £500 To go towards staff time on conducting surveys, and printing of materials.
	Total for Environment Theme	£3400

Total Cost to deliver year one of the action plan:

Total for Operational Activity:	£24000
Total for Community Theme Activities:	£10590
Total for Environment Them Activities:	£3400
Small grant pot for additional actions that may arise from the community:	£10000
Grand Total for one year:	£47990