

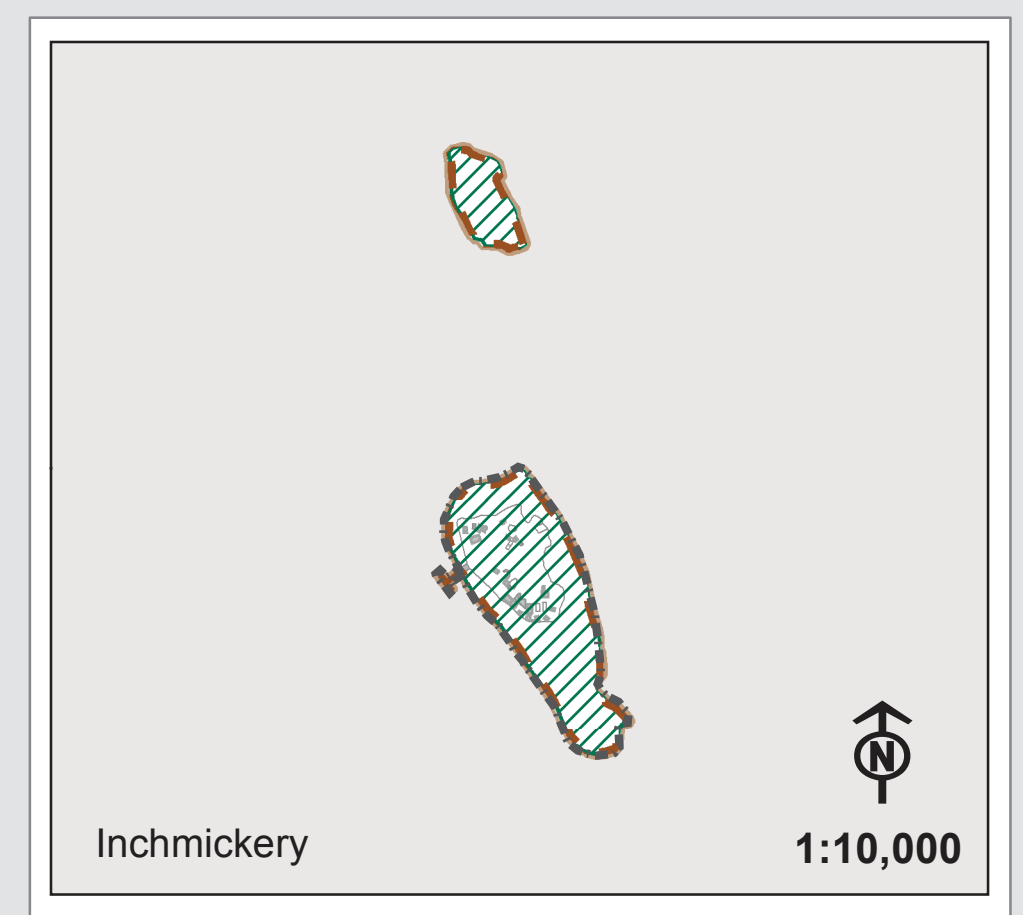


North East

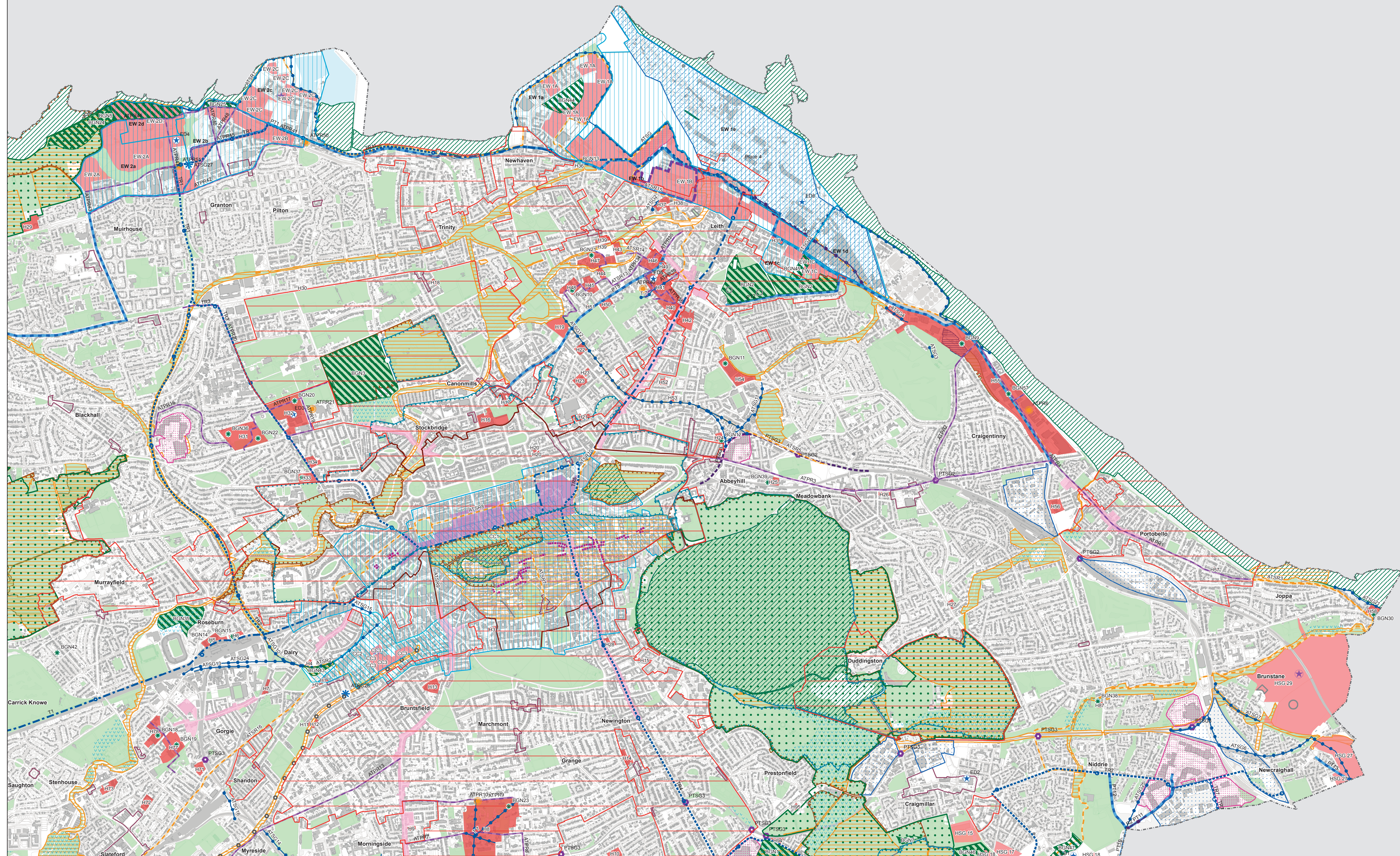


1:15,000

© Crown copyright (Land database rights) [year of supply] OS [licence number].
The use permitted to use this data is only for the purposes of the contract with the organisation that provided you with the data.
You are not permitted to copy, sub-license, distribute or sell any of this data to third parties in any form. City of Edinburgh Council 2021.



Inchmickery 1:10,000



Proposals Map

- The City of Edinburgh Council Boundary
 - General plan - wide policies
 - Env 1-12, Env 14-17, Env 19-21, Env 23-38, Inf 1-8, Inf 10, Inf 12, Inf 14, Inf 16, Inf 18-19, Inf 21-22, Re 1, Re 7-8, Re 11, Hou 2-9, Econ 1, 3, 7
 - Econ 2, 5, Hou 1, Re 7-8, Re 10
 - Place 1, Econ 3, Inf 9, Re 9
 - Place 1, Hou 1, Housing Proposal CC3, (Table 2), Inf 9
 - Place 2, Hou 1, Re 9, Econ 4
 - Env 9
 - Env 13, Env 14
 - Env 16
 - Env 15
 - Env 18
 - Env 18
 - Env 19
 - Env 21
 - Env 21
 - Env 21
 - Env 35
 - Env 23 - 24
 - Table 1
 - Env 22
 - Hou 1, Table 2
 - Hou 1, Table 2
 - Hou 1, Table 2
 - Inf 1, Inf 3, Table 11
 - Econ 3
 - Econ 4
 - Places nos. 31, 20, 17, 21, 16, 18
 - Place 20
 - Re 5, 9; Econ 3, Table 14
 - Re 3-4, 9; Econ 3, Table 14
 - Re 2, 4, Table 14
 - Re 6; Econ 3, Table 14
 - Re 8
 - Re 5, Table 14
 - Inf 3-4, Inf 11, Table 7
 - Inf 11, Table 7
 - Inf 3, Inf 4, Inf 11, Table 10
 - Inf 3, Inf 4, Inf 11, Table 3
 - Inf 6 - 8, Inf 12, Tables 4, 8
 - Inf 3, Inf 4, Inf 11, Table 4
 - Inf 3, Inf 4, Table 9, Tra 9
 - Inf 3, Inf 4, Inf 11, Table 6
 - Inf 3, Inf 4, Inf 10, Table 5
 - Inf 3, Inf 4, Inf 11, Inf 13, Table 6
 - Place 17
 - Inf 15
 - Inf 17-19
 - Inf 20, Inf 18
- Proposals Map designations and relevant policies and proposals in the Written Statement**
- Urban Area - refers to all LDP area outwith the Green Belt and Countryside Policy Area
 - City Centre
 - City Centre Proposal
 - Edinburgh Waterfront
 - World Heritage Site
 - Designated Conservation Area
 - Scheduled Ancient Monument (including Union Canal)
 - Historic Garden / Designed Landscape - Inventory Site
 - Green Belt
 - Countryside Policy Area
 - Special Landscape Area
 - International and National Natural Heritage Designation (Natura 2000 Site and/or SSSI)
 - Local Nature Conservation Site
 - Local Nature Reserve
 - Area of Importance for Flood Management
 - Open Space
 - Green/Blue Network Proposal (BGN 1 - 57)
 - Pentland Hills Regional Park
 - Housing Proposal (H1 - H95)
 - LDP Legacy Sites
 - Education Infrastructure (ED 1-17)
 - Strategic Business Centre
 - Business and Industry Area
 - Area of Economic Importance
 - Safeguard for Potential Relocation of Royal Highland Centre
 - Local Centre
 - Town Centre
 - City Centre Retail Core
 - Commercial Centre
 - Speciality Shopping Street
 - Proposed New Centres
 - Existing Tram Route
 - Tram route safeguard proposal and option safeguards (TR1-11)
 - Public Transport Other Safeguards (PTSG 1-3)
 - Strategic Active Travel Project and Safeguards (ATSR 1-16)
 - Active Travel Mobility Hub
 - Active Travel Proposals relating to Development sites
 - Road Improvements (R 1-10)
 - Orbital Bus routes and improved connections (PT 1-17)
 - Active Travel Safeguards - local connections/Entry points (ATSG 1-27)
 - West Edin Transport Improvements (WEI1-40)
 - Safeguard for Potential Additional Runway
 - Airport Public Safety Zone
 - Safeguarded Waste Management Facility
 - Minerals Site

Please note Local Biodiversity and Local Geology Sites are not shown on printed and PDF formats of this map. These can be viewed using the online map available at edinburgh.gov.uk/cityplan2030.