



City Plan 2030 Proposed plan

Proposals Map

The City of Edinburgh Council Boundary

General plan - wide policies

Env 1-12, Env 14-17, Env 19-21, Env 23-26, Inf 1-8, Inf 10, Inf 12, Inf 14, Inf 16, Inf 18-19, Inf 21-22, Re 1, Re 7-8, Re 11, Hou 2-5, Econ 1, 3, 4

Econ 2, 5, Hou 1, Re 7-8, Re 10

Place 1, Econ 3, Inf 9, Re 9

Place 1, Hou 1, Housing Proposal CC3, (Table 2), Inf 9

Place 2, Hou 1, Re 9, Econ 4

Env 9

Env 13, Env 14

Env 16

Env 15

Env 18

Env 18

Env 19

Env 21

Env 21

Env 21

Env 35

Env 23 - 24

Table 1

Env 22

Hou 1, Table 2

Hou 1, Table 2

Inf 1, Inf 3, Table 11

Econ 3

Econ 4

Places nos. 31, 20, 17, 21, 16, 18

Place 20

Re 5, 9; Econ 3, Table 14

Re 3-4, 9; Econ 3, Table 14

Re 2, 4, Table 14

Re 6; Econ 3, Table 14

Re 8

Re 5, Table 14

Inf 3-4, Inf 11, Table 7

Inf 11, Table 7

Inf 3, Inf 4, Inf 11, Table 10

Inf 3, Inf 4, Inf 11, Table 3

Inf 6-8, Inf 12, Tables 4, 8

Inf 3, Inf 4, Inf 11, Table 4

Inf 3, Inf 4, Table 9, Tra 9

Inf 3, Inf 4, Inf 11, Table 6

Inf 3, Inf 4, Inf 10, Table 5

Inf 3, Inf 4, Inf 11, Inf 13, Table 8

Place 17

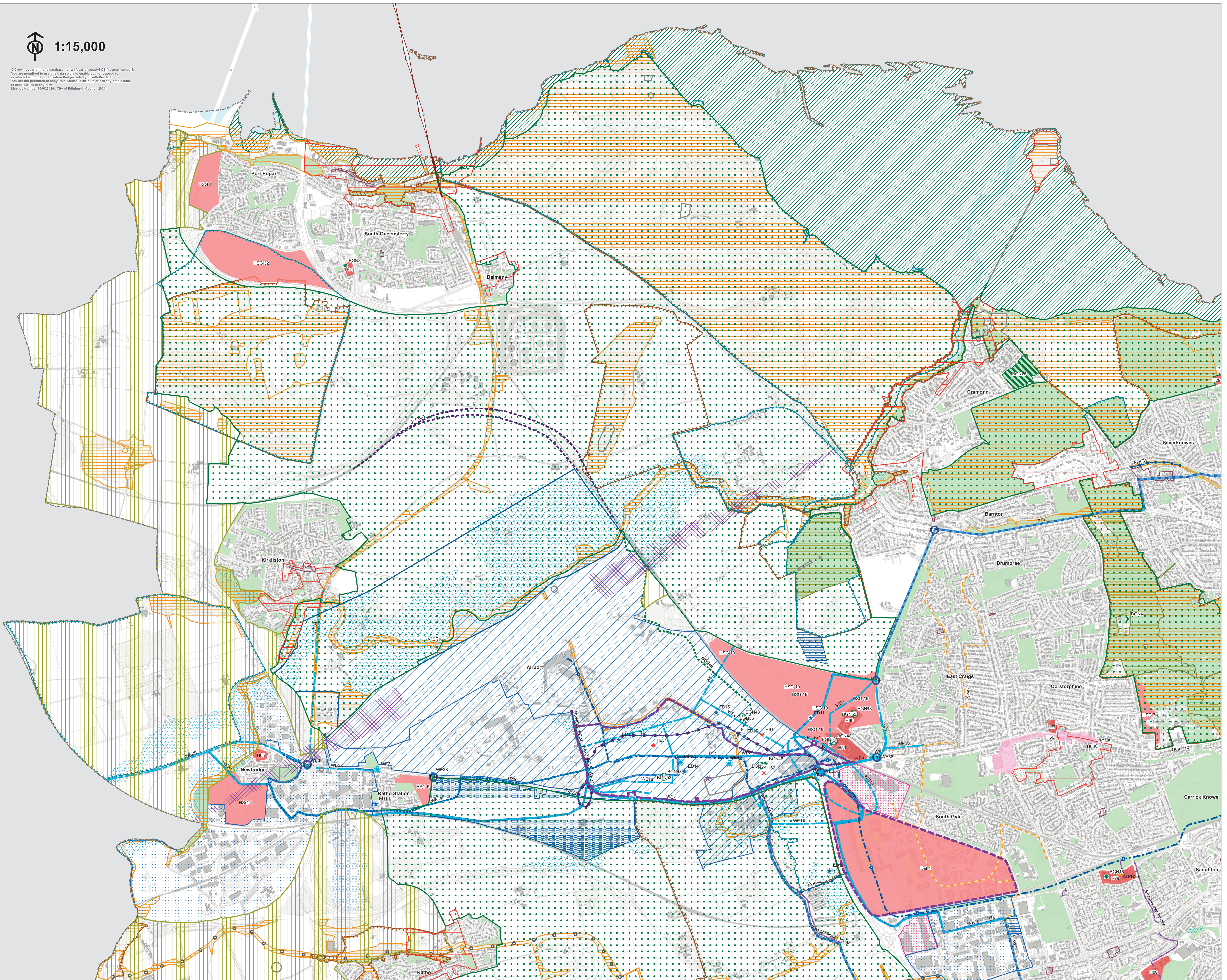
Inf 15

Inf 17-19

Inf 20, Inf 18

Proposals Map designations and relevant policies and proposals in the Written Statement

- Urban Area - refers to all LDP area outwith the Green Belt and Countryside Policy Area
- City Centre
- City Centre Proposal
- Edinburgh Waterfront
- World Heritage Site
- Designated Conservation Area
- Scheduled Ancient Monument (including Union Canal)
- Historic Garden / Designed Landscape - Inventory Site
- Green Belt
- Countryside Policy Area
- Special Landscape Area
- International and National Natural Heritage Designation (Natura 2000 Site and/or SSSI)
- Local Nature Conservation Site
- Local Nature Reserve
- Area of Importance for Flood Management
- Open Space
- Green/Blue Network Proposal (BGN 1 - 57)
- Pentland Hills Regional Park
- Housing Proposal (H1 - H95)
- LDP Legacy Sites
- Education Infrastructure (ED 1-17)
- Strategic Business Centre
- Business and Industry Area
- Area of Economic Importance
- Safeguard for Potential Relocation of Royal Highland Centre
- Local Centre
- Town Centre
- City Centre Retail Core
- Commercial Centre
- Speciality Shopping Street
- Proposed New Centres
- Existing Tram Route
- Tram route safeguard proposal and option safeguards (TR1-11)
- Public Transport Other Safeguards (PTSG 1-3)
- Strategic Active Travel Project and Safeguards (ATSR 1-16)
- Active Travel Mobility Hub
- Active Travel Proposals relating to Development sites
- Road Improvements (R 1-10)
- Orbital Bus routes and improved connections (PT 1-17)
- Active Travel Safeguards - local connections/Entry points (ATSG 1-27)
- West Edin Transport Improvements (WE1-40)
- Safeguard for Potential Additional Runway
- Airport Public Safety Zone
- Safeguarded Waste Management Facility
- Minerals Site



1:15,000

© Crown copyright (and database rights) [year of supply] OS [licence number]. You are permitted to use this data solely to enable you to respond to, or interact with, the organisation that provided you with the data. You are not permitted to copy, distribute, disseminate or sell any of this data in three parties in any form. Licence number: 10002426 - City of Edinburgh Council 2021.

Please note Local Biodiversity and Local Geology Sites are not shown on printed and PDF formats of this map. These can be viewed using the online map available at edinburgh.gov.uk/cityplan2030.