
Visiting Housing Support Edinburgh






Your Guide to Essential
Housing Services



Edinburgh Housing Support Services

Edinburgh Housing Support Services are dedicated to assisting individuals in finding, setting up, and maintaining suitable accommodation. Our mission is to prevent eviction and support clients in their journey towards independent living. We offer tailored, confidential, and person-centred support, ensuring that each client receives guidance that meets their unique needs. Our services include helping clients set up their accommodation, providing ongoing support for maintenance and stability and delivering preventative support to avoid eviction. Rest assured, all interactions with our services are strictly confidential.

Organizations Featured:

-  Turning Point Scotland - General Support - North East, South East Edinburgh
-  Right There - General Support - North West Edinburgh
-  Four Square - General Support - South West Edinburgh
-  Streetwork at Simon Community Scotland - Complex Needs, Citywide
-  LinkLiving - Young People - 16–25-year-old, Citywide

Making a Referral

If you need Visiting Housing Support (VHS), you can refer yourself. You don't need to know which organisation would suit your needs if you're unsure. Please fill in

[One way in VHS referral form](#)

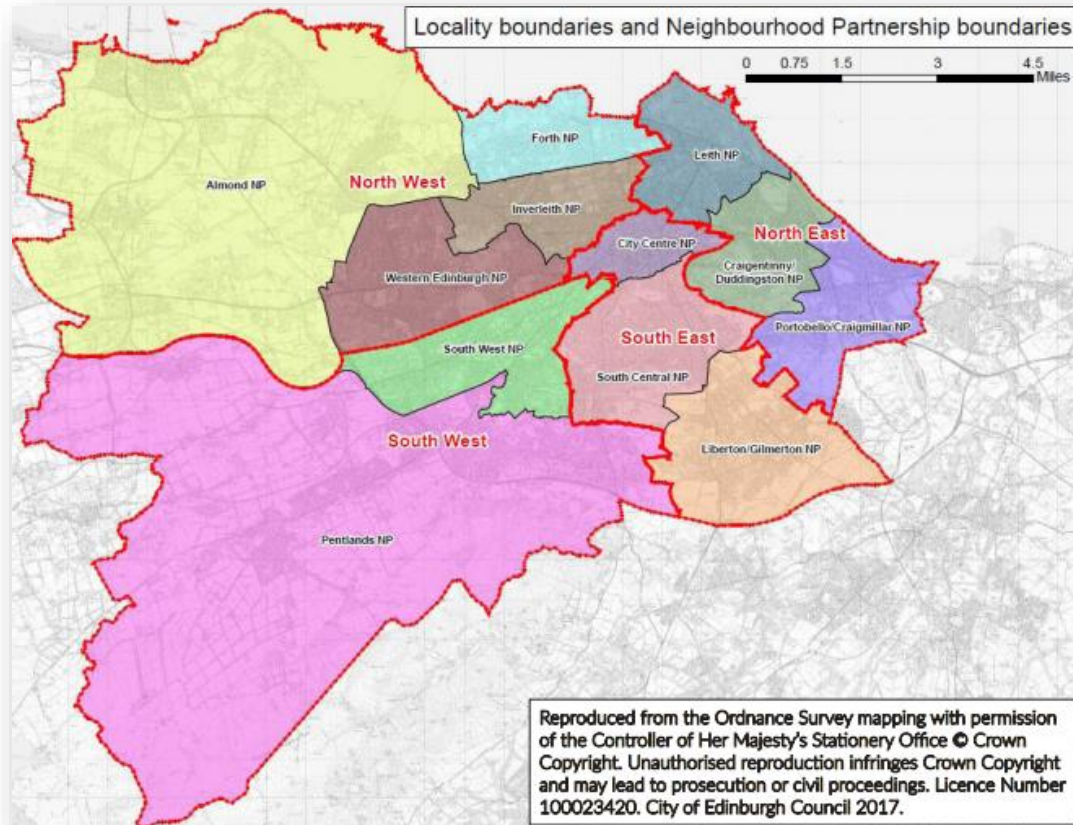
on your phone or a computer and we'll be in touch to assess the person's needs.

If you have any questions about Visiting Housing Support from any of the above providers, you can contact us on **0131 6030400** during working week.

Together, we can help you find a safe and secure place to call home



Areas We Serve



North East, and South East: City Centre, Meadows/Morningside, Southside/Newington,

Craigenfinny/Duddingston, Leith/Leith Walk, Portobello/Craigmillar, Liberton/Gilmerton

North West: Almond, Drumbrae/Gyle, Corstorphine/Murrayfield, Inverleith/Forth

South West: Colinton/Fairmilehead, Fountainbridge/Craiglockhart, Pentland Hills, Sighthill/Gorgie

Contact Us

Edinburgh Housing Support Helpline 0131 603 0400

Find Out More

[Edinburgh | Turning Point Scotland](#)

[Homeless & Social Support Charity Scotland \(rightthere.org\)](#)

[Visiting Support - Four Square](#)

[Simon Community Scotland - Home - Support for people experiencing homelessness in Scotland \(simonscotland.org\)](#)

[Home | LinkLiving](#)