

Statutory Consultation Proposing a new Kirkliston High School on the Kirkliston Leisure Centre site aligned to Kirkliston Primary School

Summary Consultation Paper

GIVE US YOUR VIEWS:

www.edinburgh.gov.uk/kirklistonhs



What is being proposed?

- The proposal is that Kirkliston Primary School will be the sole feeder primary school to a new secondary school located on the existing Kirkliston Leisure Centre site. The catchment area of the new secondary school will be the same as that of the existing Kirkliston Primary School.
- Maps showing the existing and proposed catchment areas have been included within this summary paper.
- The new school could open in August 2028 at the earliest.
- The new school would be built over 4 storeys adjacent to the new Early years and Primary 1 annexe currently under construction. It would include publicly accessible sports provision including an all-weather pitch.
- The design of the school teaching facilities will be capable of expansion to a 1200 pupil capacity if deemed necessary in the future.
- Design development for the school would include a full traffic impact assessment which would set out the measures that may need to be put in place to limit congestion or parking issues in surrounding areas.

Who will the changes affect?

- The proposed changes will affect families and residents in the Kirkliston and Queensferry areas.
- From the November prior to the new school opening, P7 pupils from Kirkliston Primary School will attend the new secondary school when they reach S1.
- Kirkliston pupils already attending Queensferry High School or any other school will not be expected to change schools.
- It is proposed that a sibling guarantee be offered to children who have an older sibling at Queensferry High School. The details of the guarantee can be found in the full consultation paper.
- When would the changes come into effect?

- The new school could open in August 2028 at the earliest. The new school's catchment area would come into effect in the November prior to the new school opening.

Why are these proposals being considered?

- It is anticipated that Queensferry High School's current 1,200 pupil capacity will be exceeded in 2025 due to housing growth in the area.
- Previous engagement suggested that the Queensferry and Kirkliston communities thought there should be a new secondary school built in Kirkliston to provide the additional spaces required. Lots of people suggested different sites for a new school. Some people suggested the Kirkliston Leisure Centre site.
- While further engagement has shown that many people do not think the Leisure Centre is the right site for a new school, it is the only site that is within Council control and is likely to obtain planning permission for a new high school development.
- Alternative sites identified are either located within Greenbelt or Countryside policy areas; or have been identified as areas at risk of flooding; or are safeguarded for a second runway at Edinburgh airport. Therefore, it is unlikely that a proposal for a new high school on any of these locations would be supported by Planning.

Why are we consulting?

- Previous informal engagement has helped shape these proposals which now forms the basis for this formal statutory consultation. To establish a new school the Council has a legal obligation to carry out a statutory consultation under the Schools (Consultation) (Scotland) Act 2010 as amended by the Children and Young people (Scotland) Act 2014.

How will I know if my views have been considered?

- All comments received during the statutory consultation period will be recorded and represented in a final 'Outcomes of the Consultation' report that we expect to be considered by Council in January 2024. The report will be published three weeks in advance of the Council meeting and parents of pupils attending affected schools and anyone who has responded to the consultation will be notified of its publication.

How can I find out more about the proposals or make my views heard?

If you want more information, you can find the full consultation paper and other supporting information at www.edinburgh.gov.uk/kirklistonhs

We have also organised a public meeting which anyone can attend, as below:

Venue	Date	Time
Kirkliston Primary School	Tuesday, 10 October 2023	18:30 – 20:30

The meeting will open with a short presentation followed by a question-and-answer session. We will take a note of the meeting and all the points made will be captured in the final 'Outcomes of the Consultation Report'.

Please email kirklistonhs@edinburgh.gov.uk by 3 October 2023 if you need translation services at the meeting.

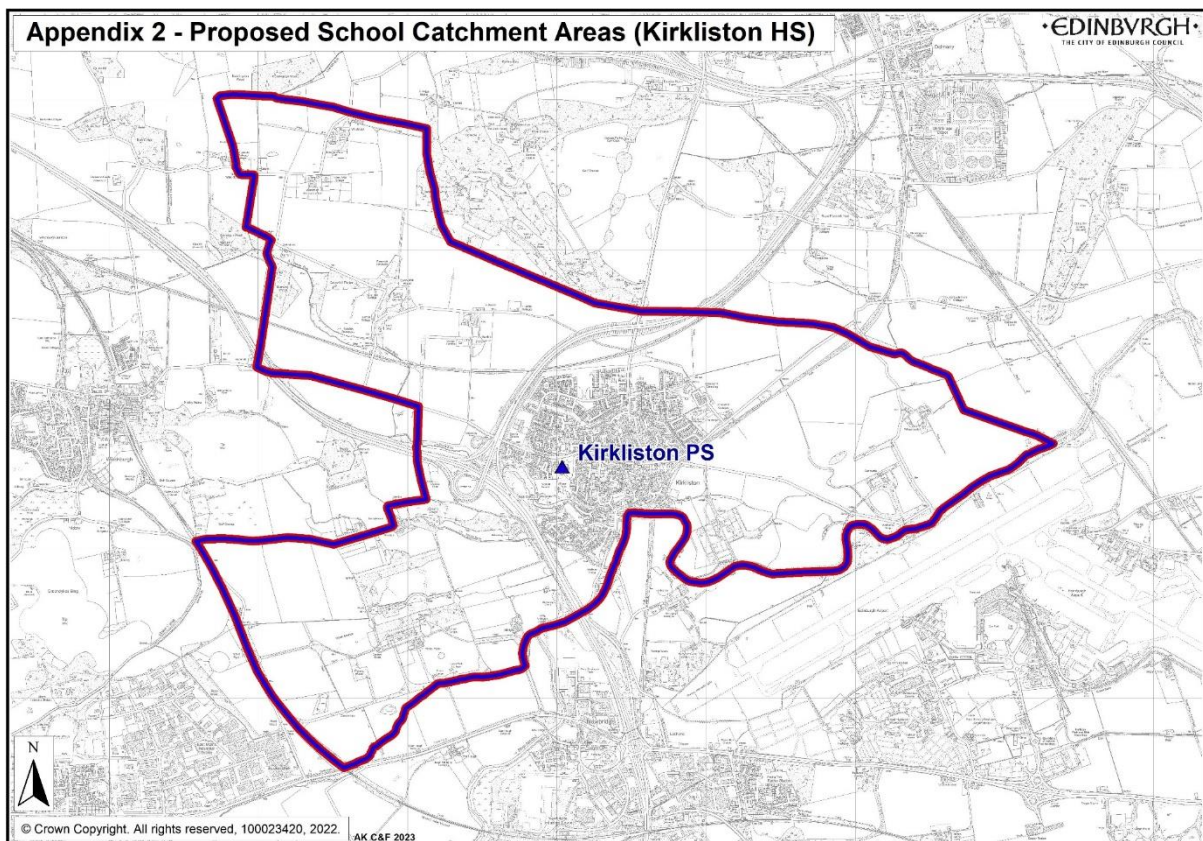
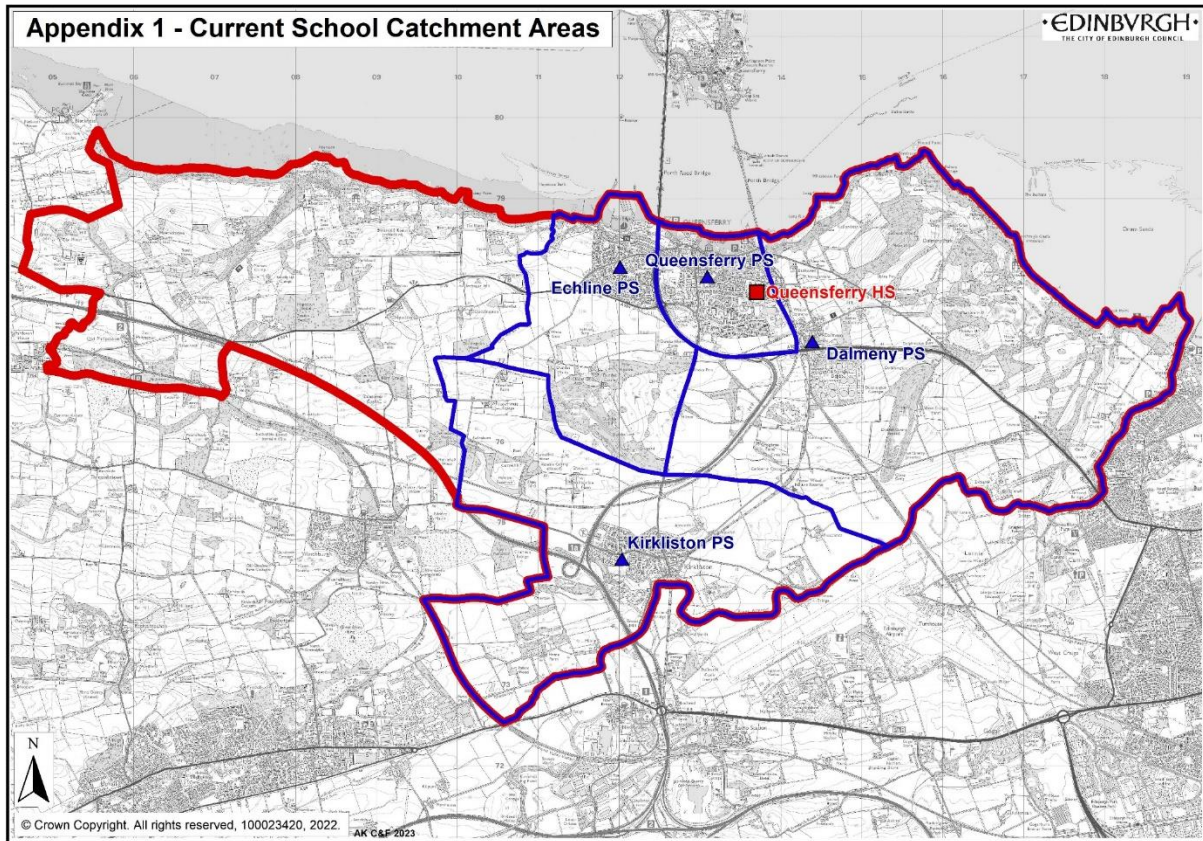
It would be helpful if you could take time to complete our short survey – you can find it online at www.edinburgh.gov.uk/kirklistonhs. If you don't have internet access, then you can view the full consultation paper at Kirkliston Primary School, Kirkliston Library or Queensferry High School.

You can also email comments to us directly at kirklistonhs@edinburgh.gov.uk or if you prefer, they can be posted to:

FAO: Robbie Crockatt
Strategic Asset Planning
City of Edinburgh Council
Waverley Court
4 East Market Street
Edinburgh, EH8 8BG

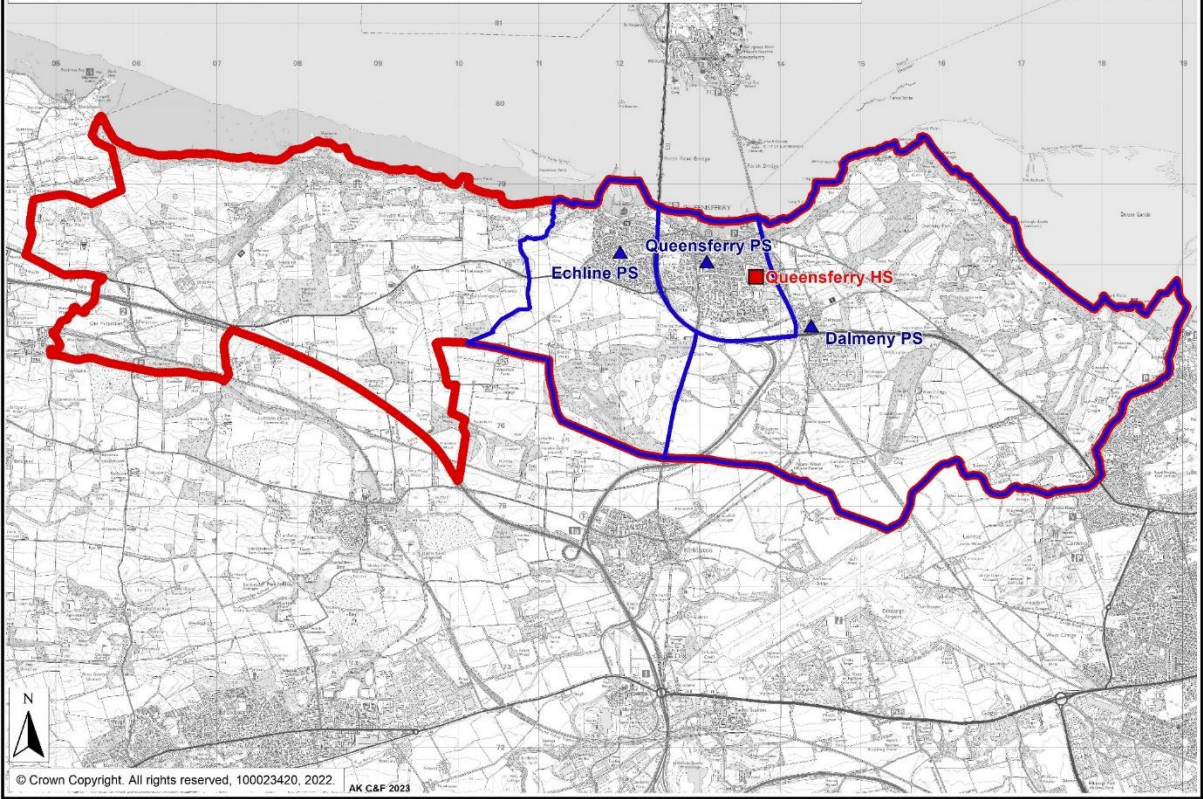
All comments should arrive by 5pm on Tuesday, 31 October 2023.

Existing & Proposed School Catchment Areas



Appendix 2 - Proposed School Catchment Areas (Queensferry HS)

•EDINBURGH•
THE CITY OF EDINBURGH COUNCIL



HAPPY TO TRANSLATE

ترجمہ کے لئے حاضر آناںہدےر سہجے انہواد کرہب

بسعڈنا توفیر الترجمة MOZEMY PRZETŁUMACZYĆ 很樂意翻譯

You can get this document on tape, in Braille, large print and various computer formats if you ask us. We can also give information on community language translations. Please contact the Interpretation and Translation Service at its@edinburgh.gov.uk quoting the unique reference: **23-9044A.**