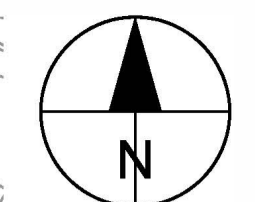
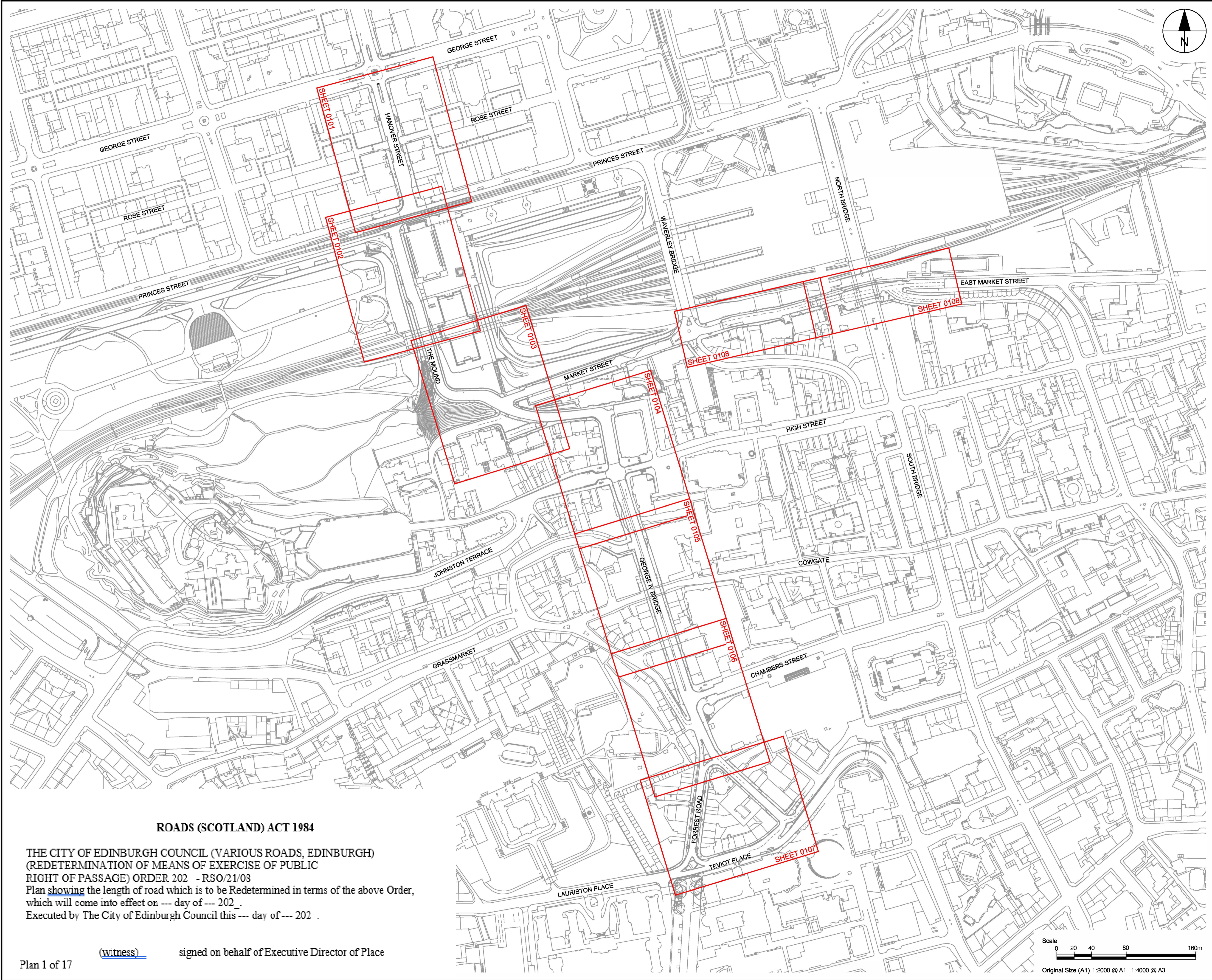


File name: L:\LEGACY\UKED4\F002\VT\PROJECTS\TRAFFIC - CL+ MEADOWS TO GEORGE ST1900_CAD_GIS DEVELOPED DESIGN\910_CAD20-SHEETS\RSO DRAWINGS - 2024\60579473-RSO-C-0200\02016.DWG
 Last saved by: SWANSONAJ Last Printed: 2024-04-09
 Project Management Initials: Designer: MR Checked: PM Approved: PM ISO A1 594mm x 841mm



AECOM

PROJECT
MEADOWS TO GEORGE STREET

CLIENT

EDINBURGH
THE CITY OF EDINBURGH COUNCIL

CONSULTANT
AECOM
1 Tanfield
EDINBURGH, EH3 5DA
+44 (0) 131 301 8600 tel
+44 (0) 131 301 8699 fax
www.aecom.com

NOTES

ISSUE/REVISION

I/R	DATE	DESCRIPTION
A	14/03/2024	RSO Updates
-	13/02/2024	FIRST ISSUE

KEY PLAN

FOR INTERNAL CEC USE ONLY

PROJECT NUMBER
60579473

SHEET TITLE
MEADOWS TO GEORGE STREET
REDETERMINATION ORDERS
OVERVIEW

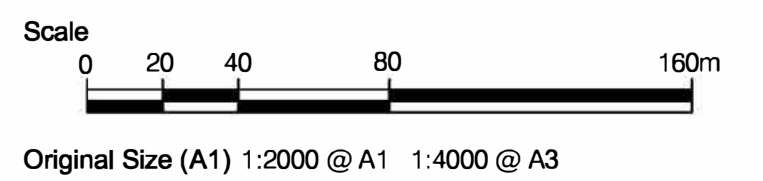
SHEET NUMBER
60579473-RSO-C-0200

ROADS (SCOTLAND) ACT 1984

THE CITY OF EDINBURGH COUNCIL (VARIOUS ROADS, EDINBURGH)
 (REDETERMINATION OF MEANS OF EXERCISE OF PUBLIC
 RIGHT OF PASSAGE) ORDER 202 - RSO/21/08
 Plan showing the length of road which is to be Redetermined in terms of the above Order,
 which will come into effect on --- day of --- 202_ .
 Executed by The City of Edinburgh Council this --- day of --- 202 .

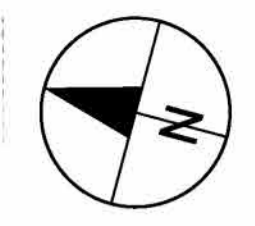
(witness) signed on behalf of Executive Director of Place

Plan 1 of 17



This drawing has been prepared for the use of AECOM's client. It may not be used, modified, reproduced or relied upon by third parties, except as agreed by AECOM or as required by law. AECOM accepts no responsibility, and denies any liability, whatsoever, to any party that uses or relies on this drawing without AECOM's express written consent. Do not scale this document. All measurements must be obtained from the stated dimensions.

File name: L:\LEGACY\UKED\4P02\1\TP\PROJECTS\TRAFFIC - CL+ MEADOWS TO GEORGE ST1900_CAD_GIS DEVELOPED DESIGN\910_CAD20-SHEETS\RSO DRAWINGS - 2024\60579473-RSO-C-020\0216.DWG
 Last saved by: SWANSONAJ Last Plotted: 2024-04-09
 Project Management Initials: Designer: MR Checked: PM Approved: PM ISO A1 594mm x 841mm



PROJECT
MEADOWS TO GEORGE STREET

CLIENT



CONSULTANT

AECOM
 1 Tanfield
 EDINBURGH, EH3 5DA
 +44 (0) 131 301 8600 tel
 +44 (0) 131 301 8699 fax
 www.aecom.com

NOTES

- KEY**
- Existing carriageway redetermined as footway (1BA, 1BB, 1BC, 1BD, 1BE)
 - Existing footway redetermined as carriageway (2AA)
 - Existing carriageway redetermined as cycletrack (3AA, 3AB, 3AC, 3AD)
 - Existing footway redetermined as cycletrack (4AA, 4AB, 4AC, 4AD)

ISSUE/REVISION

I/R	DATE	DESCRIPTION
A	14/03/2024	RSO Updates
-	12/02/2024	FIRST ISSUE

KEY PLAN

FOR INTERNAL CEC USE ONLY

PROJECT NUMBER

60579473

SHEET TITLE

MEADOWS TO GEORGE STREET
 REDETERMINATION ORDERS
 RSO DIMENSIONS - SHEET 2 OF 17

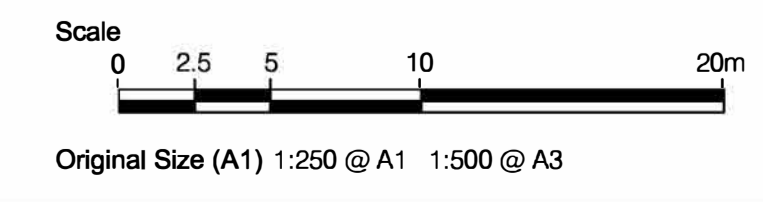
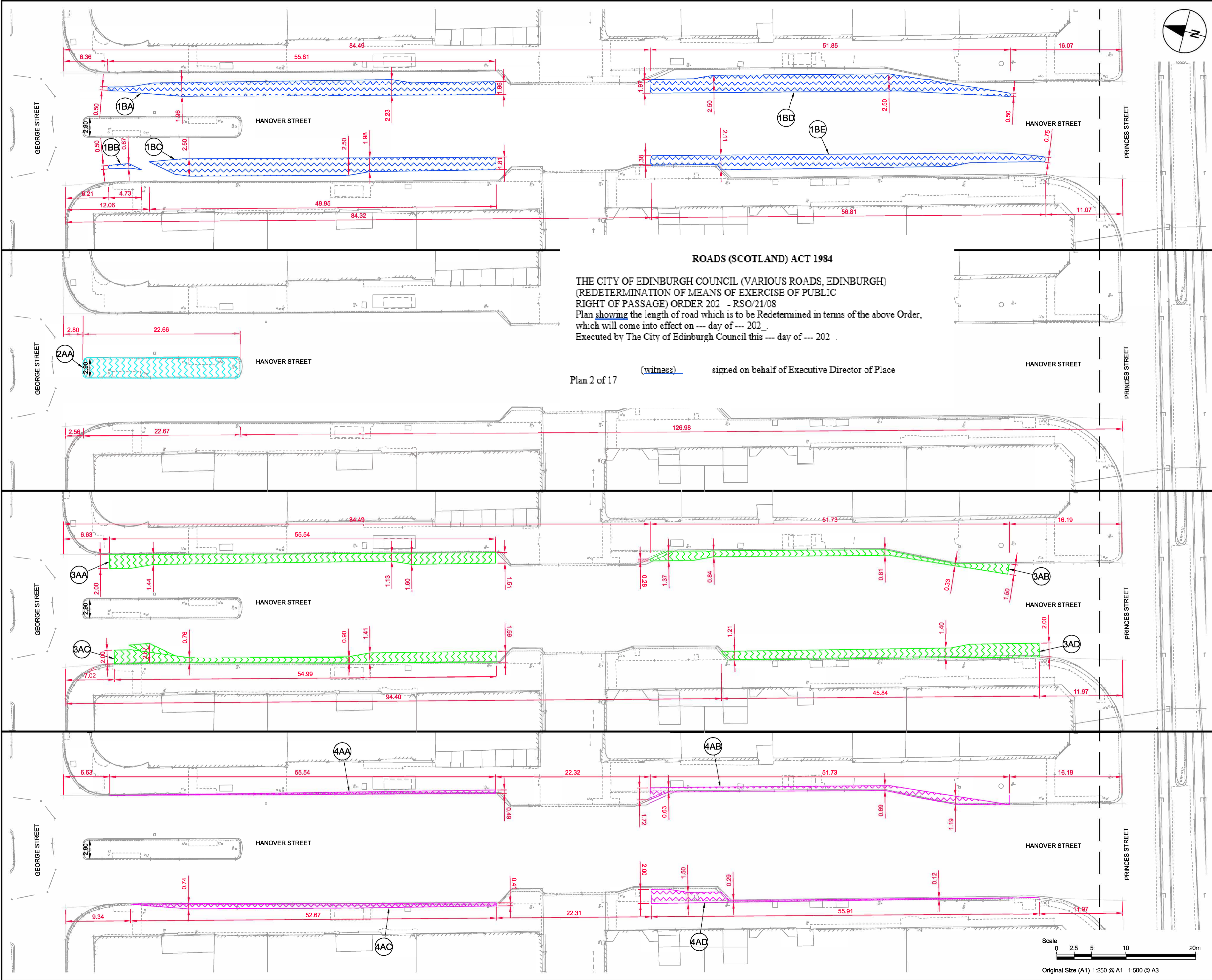
SHEET NUMBER

60579473-RSO-C-0201

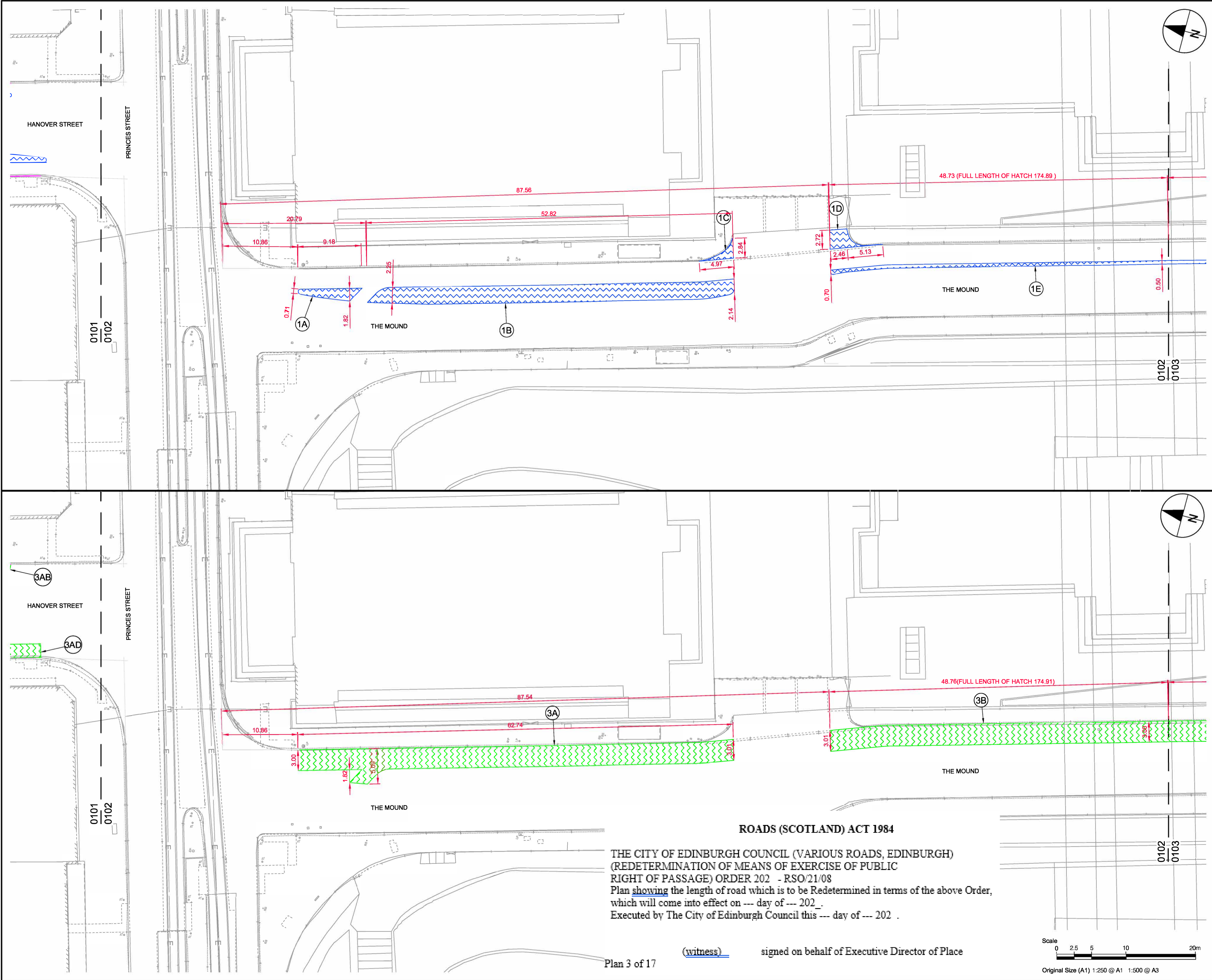
ROADS (SCOTLAND) ACT 1984
THE CITY OF EDINBURGH COUNCIL (VARIOUS ROADS, EDINBURGH)
(REDETERMINATION OF MEANS OF EXERCISE OF PUBLIC RIGHT OF PASSAGE) ORDER 202 - RSO/21/08
 Plan showing the length of road which is to be Redetermined in terms of the above Order,
 which will come into effect on --- day of --- 202_ .
 Executed by The City of Edinburgh Council this --- day of --- 202_ .

(witness) signed on behalf of Executive Director of Place

Plan 2 of 17



ISO A1 594mm x 841mm
 Approved: PM
 Checked: PM
 Designer: MR
 Project Management Initials:
 File name: L:\LEGACY\UKED\H02021\TP\PROJECTS\TRAFFIC - CL+ MEADOWS TO GEORGE ST1900_CAD_GIS DEVELOPED DESIGN\910_CAD20-SHEETS\RSO DRAWINGS - 2024\057473-RSO-C-0200\02016.DWG
 Last saved by: SWANSONAJ Last Plotted: 2024-04-09



AECOM

PROJECT
MEADOWS TO GEORGE STREET

CLIENT
EDINBURGH
 THE CITY OF EDINBURGH COUNCIL

CONSULTANT
 AECOM
 1 Tanfield
 EDINBURGH, EH3 5DA
 +44 (0) 131 301 8600 tel
 +44 (0) 131 301 8699 fax
 www.aecom.com

- NOTES
- KEY
- Existing carriageway redetermined as footway (1A, 1B, 1C, 1D, 1E)
 - Existing carriageway redetermined as cycletrack (3A, 3B, 3AD, 3AE)

ISSUE/REVISION

NO	DATE	DESCRIPTION
A	14/03/2024	RSO Updates
-	13/02/2024	FIRST ISSUE
V/R	DATE	DESCRIPTION

KEY PLAN

FOR INTERNAL CEC USE ONLY

PROJECT NUMBER
 60579473

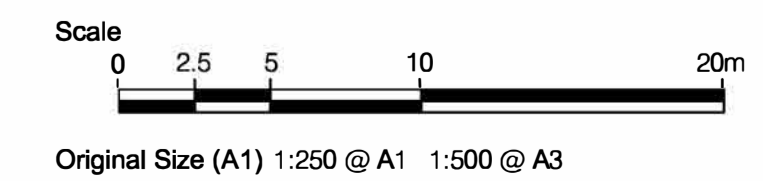
SHEET TITLE
 MEADOWS TO GEORGE STREET
 REDETERMINATION ORDERS
 RSO DIMENSIONS - SHEET 3 OF 17

SHEET NUMBER
 60579473-RSO-C-0202

ROADS (SCOTLAND) ACT 1984

THE CITY OF EDINBURGH COUNCIL (VARIOUS ROADS, EDINBURGH)
 (REDETERMINATION OF MEANS OF EXERCISE OF PUBLIC
 RIGHT OF PASSAGE) ORDER 202 - RSO/21/08
 Plan showing the length of road which is to be Redetermined in terms of the above Order,
 which will come into effect on --- day of --- 202_ .
 Executed by The City of Edinburgh Council this --- day of --- 202 .

(witness) signed on behalf of Executive Director of Place

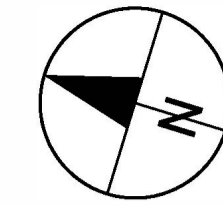


This drawing has been prepared for the use of AECOM's client. It may not be used, modified, reproduced or relied upon by third parties, except as agreed by AECOM or as required by law. AECOM accepts no responsibility, and denies any liability, whatsoever, to any party that uses or relies on this drawing without AECOM's express written consent. Do not scale this document. All measurements must be obtained from the stated dimensions.

ROADS (SCOTLAND) ACT 1984

THE CITY OF EDINBURGH COUNCIL (VARIOUS ROADS, EDINBURGH)
 (REDETERMINATION OF MEANS OF EXERCISE OF PUBLIC
 RIGHT OF PASSAGE) ORDER 202 - RSO/21/08
 Plan showing the length of road which is to be Redetermined in terms of the above Order,
 which will come into effect on --- day of --- 202 .
 Executed by The City of Edinburgh Council this --- day of --- 202 .

Plan 4 of 17 (witness) signed on behalf of Executive Director of Place



AECOM

PROJECT
MEADOWS TO GEORGE STREET

CLIENT

EDINBURGH
 THE CITY OF EDINBURGH COUNCIL

CONSULTANT

AECOM
 1 Tanfield
 EDINBURGH, EH3 5DA
 +44 (0) 131 301 8600 tel
 +44 (0) 131 301 8699 fax
 www.aecom.com

NOTES

KEY
 Existing carriageway redetermined as footway (1E, 1F, 1G, 1H, 1I)

ISSUE/REVISION

NO	DATE	DESCRIPTION
A	14/03/2024	RSO Updates
-	13/02/2024	FIRST ISSUE
I/R	DATE	DESCRIPTION

KEY PLAN

FOR INTERNAL CEC USE ONLY

PROJECT NUMBER

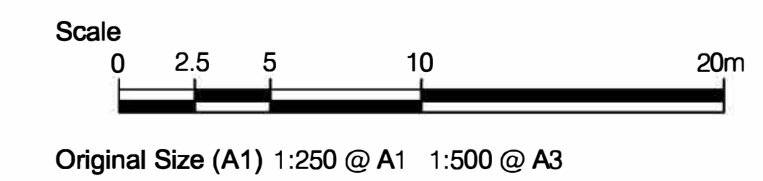
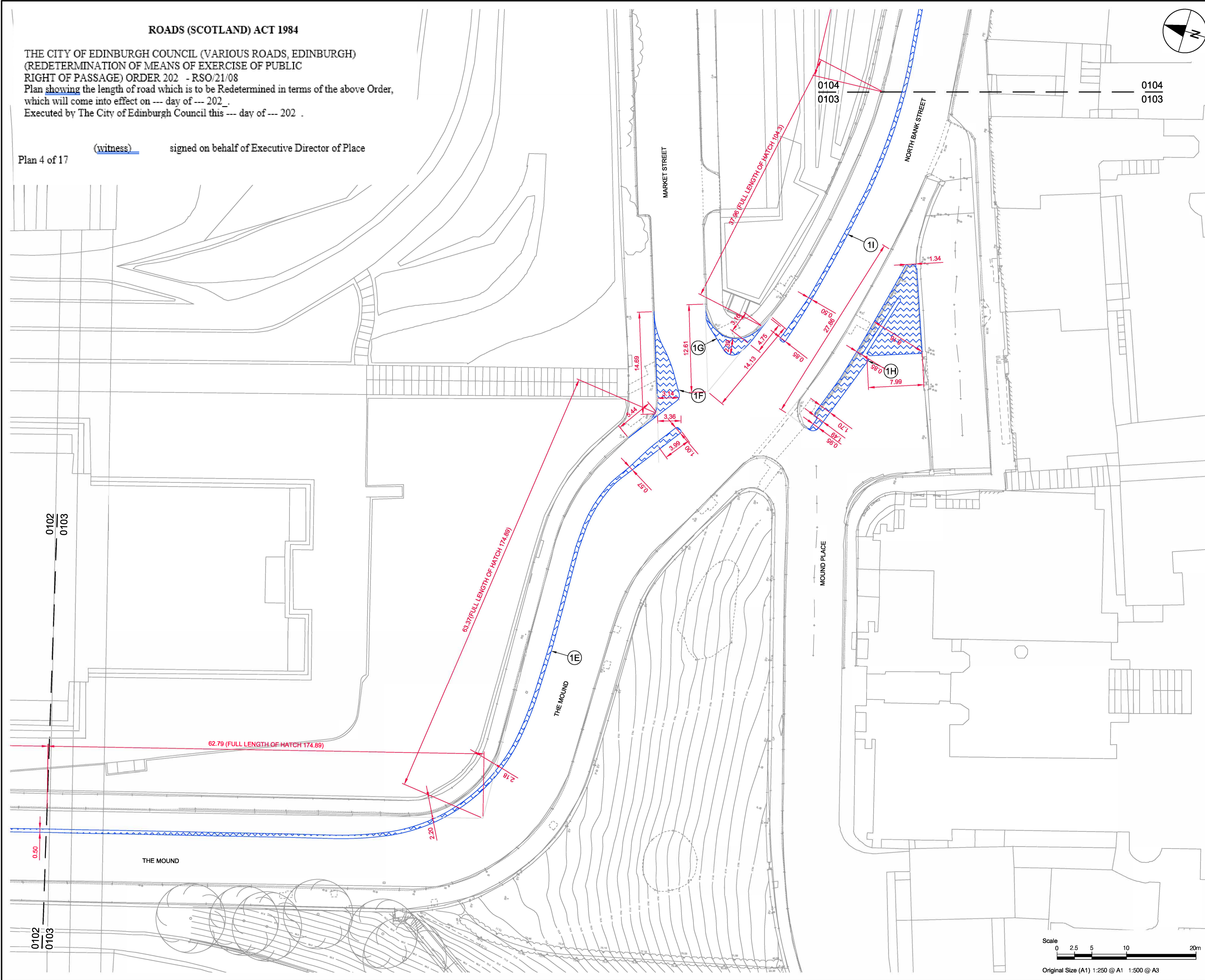
60579473

SHEET TITLE

MEADOWS TO GEORGE STREET
 REDETERMINATION ORDERS
 RSO DIMENSIONS - SHEET 4 OF 17

SHEET NUMBER

60579473-RSO-C-0203



Filename: L:\LEGACY\UKED\402021\TP\PROJECTS\TRAFFIC - CL+ MEADOWS TO GEORGE ST1900_CAD_GIS DEVELOPED DESIGN\910_CAD\20-SHEETS\RSO DRAWINGS - 2024\60579473-RSO-C-0203\020316.DWG
 Last saved by: SWANSONAJ Last Plotted: 2024-04-09

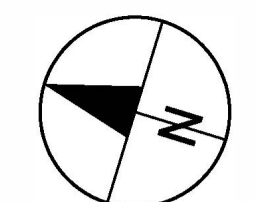
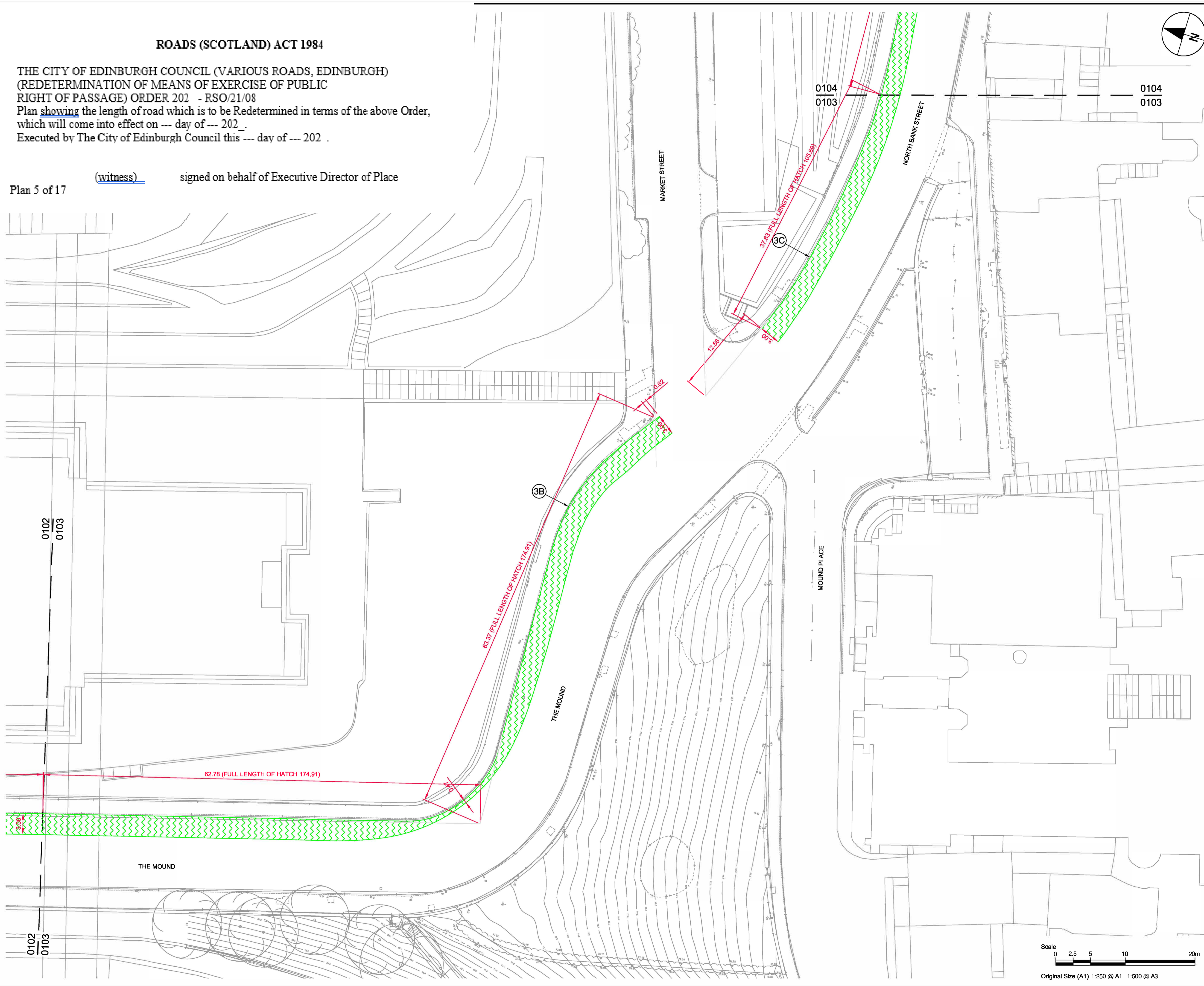
This drawing has been prepared for the use of AECOM's client. It may not be used, modified, reproduced or relied upon by third parties, except as agreed by AECOM or as required by law. AECOM accepts no responsibility, and denies any liability whatsoever, to any party that uses or relies on this drawing without AECOM's express written consent. Do not scale this document. All measurements must be obtained from the stated dimensions.

ROADS (SCOTLAND) ACT 1984

THE CITY OF EDINBURGH COUNCIL (VARIOUS ROADS, EDINBURGH)
 (REDETERMINATION OF MEANS OF EXERCISE OF PUBLIC
 RIGHT OF PASSAGE) ORDER 202 - RSO/21/08
 Plan showing the length of road which is to be Redetermined in terms of the above Order,
 which will come into effect on --- day of --- 202_ .
 Executed by The City of Edinburgh Council this --- day of --- 202_ .

(witness) signed on behalf of Executive Director of Place
 Plan 5 of 17

Project Management Initials: Designer: MR Checked: PM Approved: PM ISO A1 594mm x 841mm



PROJECT
 MEADOWS TO GEORGE STREET

CLIENT



CONSULTANT
 AECOM
 1 Tanfield
 EDINBURGH, EH3 5DA
 +44 (0) 131 301 8600 tel
 +44 (0) 131 301 8699 fax
 www.aecom.com

NOTES

KEY
 Existing carriageway redetermined as cycletrack (3B, 3C)

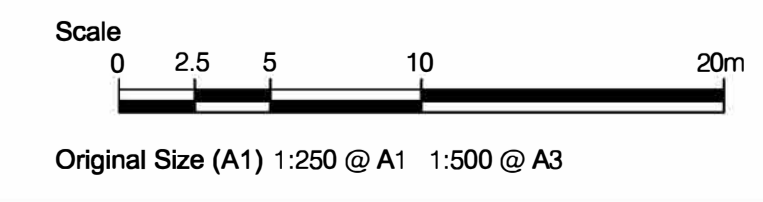
ISSUE/REVISION

I/R	DATE	DESCRIPTION
A	14/03/2024	RSO Updates
-	13/02/2024	FIRST ISSUE

KEY PLAN

FOR INTERNAL CEC USE ONLY

PROJECT NUMBER
 60579473
SHEET TITLE
 MEADOWS TO GEORGE STREET
 REDETERMINATION ORDERS
 RSO DIMENSIONS - SHEET 5 OF 17
SHEET NUMBER
 60579473-RSO-C-0204



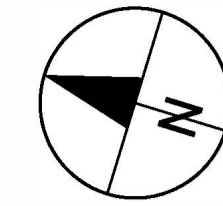
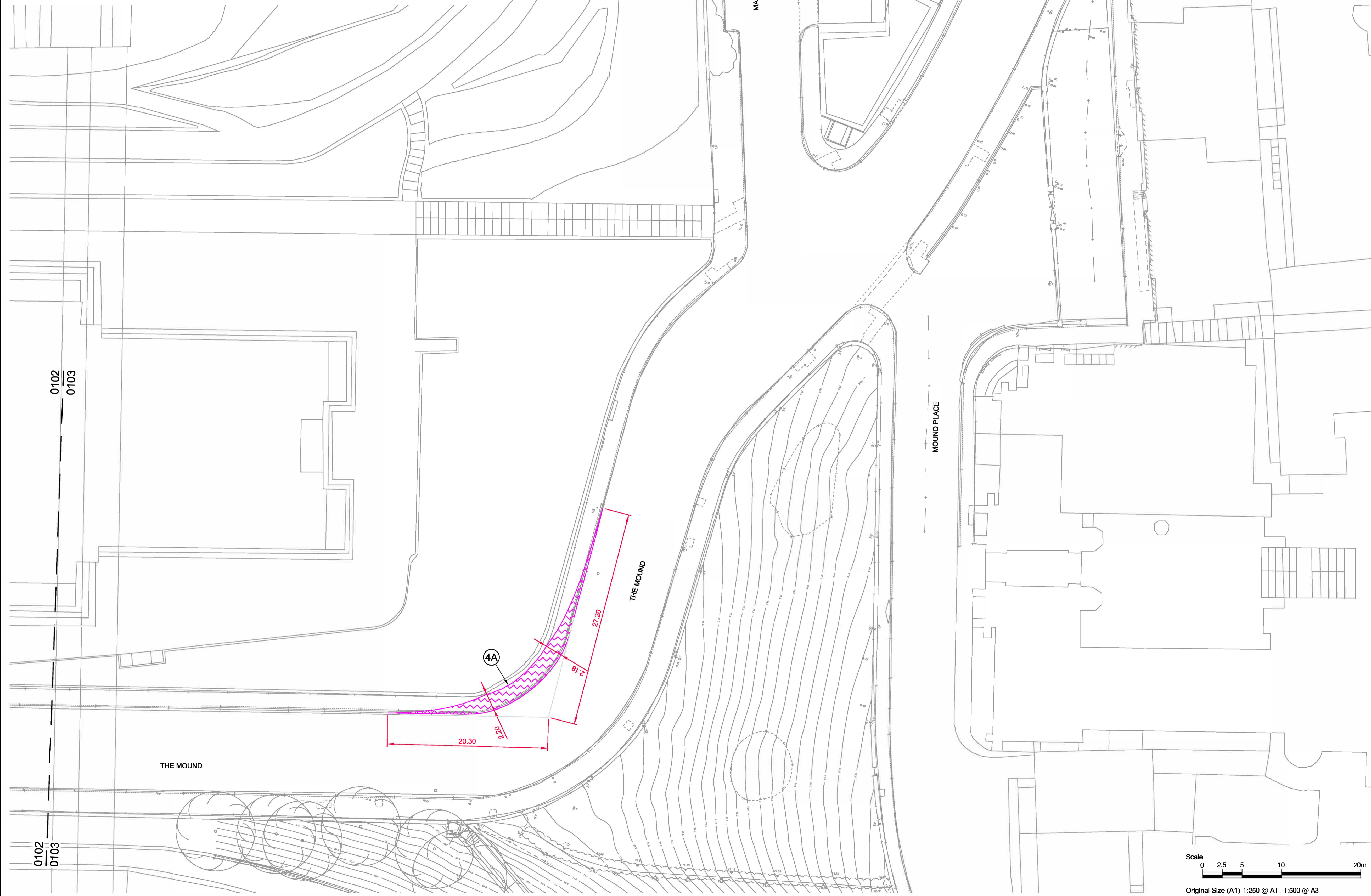
Filename: L:\LEGACY\UKED\4P02\1\TP\PROJECTS\TRAFFIC - CL+ MEADOWS TO GEORGE ST1900_CAD_GIS DEVELOPED DESIGN\910_CAD\20-SHEETS\RSO DRAWINGS - 2024\60579473-RSO-C-0204\020416.DWG
 Last saved by: SWANSONAJ Last Plotted: 2024-04-09

This drawing has been prepared for the use of AECOM's client. It may not be used, modified, reproduced or relied upon by third parties, except as agreed by AECOM or as required by law. AECOM accepts no responsibility, and denies any liability whatsoever, to any party that uses or relies on this drawing without AECOM's express written consent. Do not scale this document. All measurements must be obtained from the stated dimensions.

ROADS (SCOTLAND) ACT 1984

THE CITY OF EDINBURGH COUNCIL (VARIOUS ROADS, EDINBURGH)
 (REDETERMINATION OF MEANS OF EXERCISE OF PUBLIC
 RIGHT OF PASSAGE) ORDER 202 - RSO/21/08
 Plan showing the length of road which is to be Redetermined in terms of the above Order,
 which will come into effect on --- day of --- 202_ .
 Executed by The City of Edinburgh Council this --- day of --- 202 .

Plan 6 of 17 (witness) signed on behalf of Executive Director of Place



PROJECT
 MEADOWS TO GEORGE STREET

CLIENT



CONSULTANT
 AECOM
 1 Tanfield
 EDINBURGH, EH3 5DA
 +44 (0) 131 301 8600 tel
 +44 (0) 131 301 8699 fax
 www.aecom.com

NOTES

KEY
 Existing footway redetermined as cycletrack (4A)

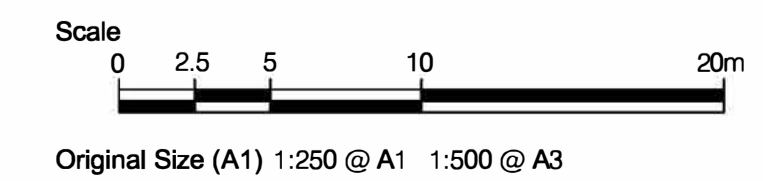
ISSUE/REVISION

I/R	DATE	DESCRIPTION
A	14/03/2024	RSO Updates
-	13/02/2024	FIRST ISSUE

KEY PLAN

FOR INTERNAL CEC USE ONLY

PROJECT NUMBER
 60579473
 SHEET TITLE
 MEADOWS TO GEORGE STREET
 REDETERMINATION ORDERS
 RSO DIMENSIONS - SHEET 6 OF 17
 SHEET NUMBER
 60579473-RSO-C-0205



Filename: L:\LEGACY\UKED\4P02\1\TP\PROJECTS\TRAFFIC - CL+ MEADOWS TO GEORGE ST1900_CAD_GIS DEVELOPED DESIGN\910_CAD\20-SHEETS\RSO DRAWINGS - 2024\60579473-RSO-C-0205\020516.DWG
 Last saved by: SWANSONAJ Last Plotted: 2024-04-09

Project Management Initials: Designer: MR Checked: PM Approved: PM ISO A1 594mm x 841mm

This drawing has been prepared for the use of AECOM's client. It may not be used, modified, reproduced or relied upon by third parties, except as agreed by AECOM or as required by law. AECOM accepts no responsibility, and denies any liability whatsoever, to any party that uses or relies on this drawing without AECOM's express written consent. Do not scale this document. All measurements must be obtained from the stated dimensions.

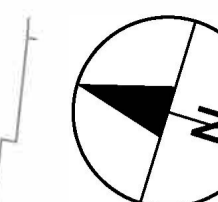
ROADS (SCOTLAND) ACT 1984

THE CITY OF EDINBURGH COUNCIL (VARIOUS ROADS, EDINBURGH)
 (REDETERMINATION OF MEANS OF EXERCISE OF PUBLIC
 RIGHT OF PASSAGE) ORDER 202 - RSO/21/08

Plan showing the length of road which is to be Redetermined in terms of the above Order,
 which will come into effect on --- day of --- 202 .
 Executed by The City of Edinburgh Council this --- day of --- 202 .

(witness) signed on behalf of Executive Director of Place

Plan 7 of 17



AECOM

PROJECT
MEADOWS TO GEORGE STREET

CLIENT

EDINBURGH
 THE CITY OF EDINBURGH COUNCIL

CONSULTANT

AECOM
 1 Tanfield
 EDINBURGH, EH3 5DA
 +44 (0) 131 301 8600 tel
 +44 (0) 131 301 8699 fax
 www.aecom.com

NOTES

KEY

Existing carriageway redetermined as footway (1J, 1K, 1L, 1M, 1N, 1O, 1P, 1Q)

ISSUE/REVISION

I/R	DATE	DESCRIPTION
A	14/03/2024	RSO Updates
-	13/02/2024	FRST ISSUE

KEY PLAN

**FOR INTERNAL CEC
 USE ONLY**

PROJECT NUMBER

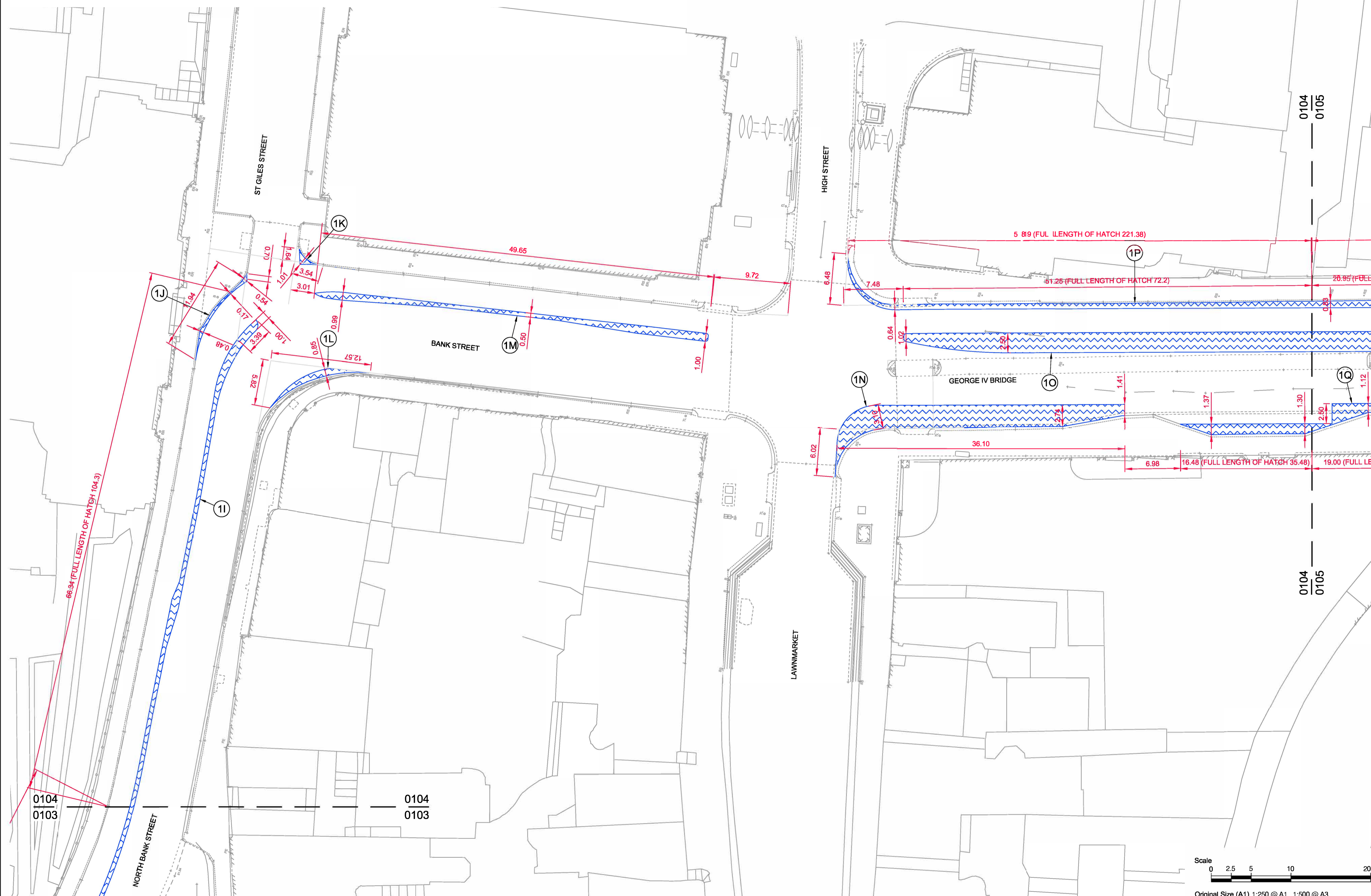
60579473

SHEET TITLE

MEADOWS TO GEORGE STREET
 REDETERMINATION ORDERS
 RSO DIMENSIONS - SHEET 7 OF 17

SHEET NUMBER

60579473-RSO-C-0206



This drawing has been prepared for the use of AECOM's client. It may not be used, modified, reproduced or relied upon by third parties, except as agreed by AECOM or as required by law. AECOM accepts no responsibility, and denies any liability whatsoever, to any party that uses or relies on this drawing without AECOM's express written consent. Do not scale this document. All measurements must be obtained from the stated dimensions.

Filename: L:\LEGACY\UKED\#P02\VT\PROJECTS\TRAFFIC - CL+ MEADOWS TO GEORGE ST1900_CAD_GIS DEVELOPED DESIGN\910_CAD20-SHEETS\RSO DRAWINGS - 2024\05\9473-RSO-C-0206\0216.DWG
 Last saved by: SWANSONAJ Last Plotted: 2024-04-09

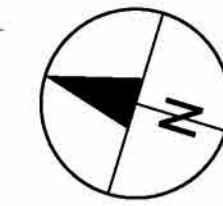
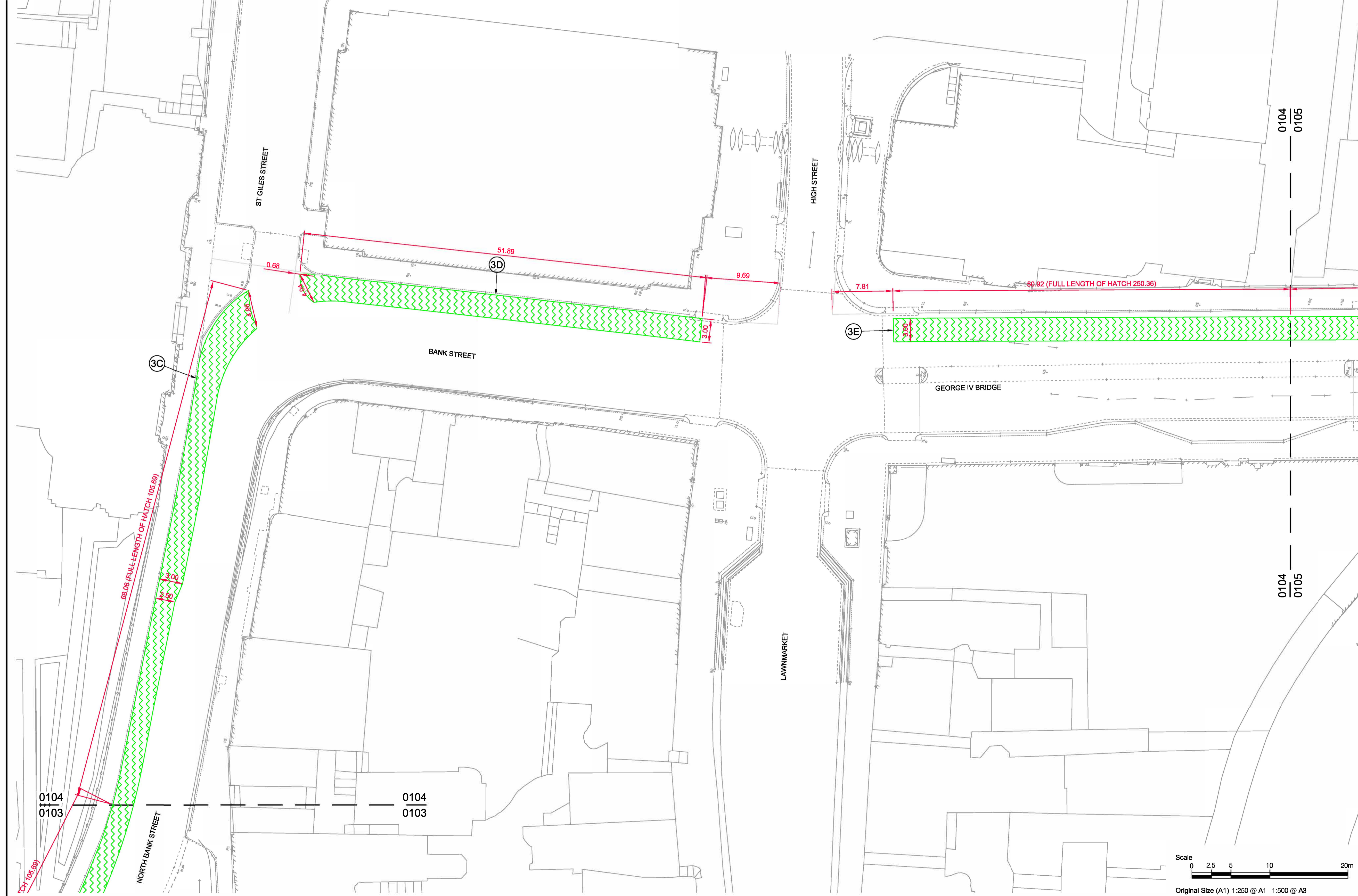
ISO A1 594mm x 841mm
 Approved: PM
 Checked: PM
 Designer: MR
 Project Management Initials:

ROADS (SCOTLAND) ACT 1984

THE CITY OF EDINBURGH COUNCIL (VARIOUS ROADS, EDINBURGH)
 (REDETERMINATION OF MEANS OF EXERCISE OF PUBLIC
 RIGHT OF PASSAGE) ORDER 202 - RSO/21/08
 Plan showing the length of road which is to be Redetermined in terms of the above Order,
 which will come into effect on --- day of --- 202 .
 Executed by The City of Edinburgh Council this --- day of --- 202 .

ISO A1 594mm x 841mm
 Approved: PM
 Checked: PM
 Designer: MR
 Project Management Initials:

(witness) signed on behalf of Executive Director of Place
 Plan 8 of 17



PROJECT
 MEADOWS TO GEORGE STREET

CLIENT



CONSULTANT
 AECOM
 1 Tanfield
 EDINBURGH, EH3 5DA
 +44 (0) 131 301 8600 tel
 +44 (0) 131 301 8699 fax
 www.aecom.com

NOTES

KEY
 Existing carriageway redetermined as cycletrack (3C, 3D, 3E)

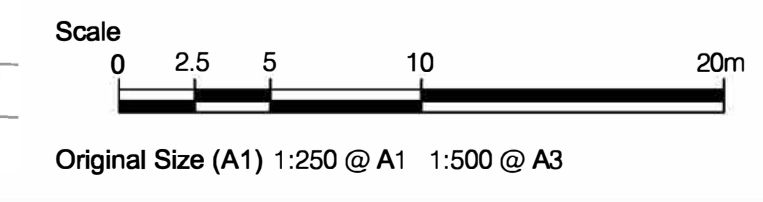
ISSUE/REVISION

I/R	DATE	DESCRIPTION
A	14/03/2024	RSO Updates
-	13/02/2024	FIRST ISSUE

KEY PLAN

FOR INTERNAL CEC USE ONLY

PROJECT NUMBER
 60579473
 SHEET TITLE
 MEADOWS TO GEORGE STREET
 REDETERMINATION ORDERS
 RSO DIMENSIONS - SHEET 8 OF 17
 SHEET NUMBER
 60579473-RSO-C-0208



Filename: L:\LEGACY\UKED\#P02021\TP\PROJECTS\TRAFFIC - CL+ MEADOWS TO GEORGE ST1900_CAD_GIS DEVELOPED DESIGN\910_CAD\20-SHEETS\RSO DRAWINGS - 2024\60579473-RSO-C-0208\02016.DWG
 Last saved by: SWANSONAJ Last Plotted: 2024-04-09

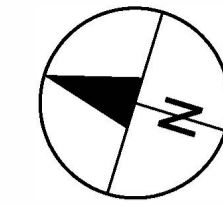
This drawing has been prepared for the use of AECOM's client. It may not be used, modified, reproduced or relied upon by third parties, except as agreed by AECOM or as required by law. AECOM accepts no responsibility, and denies any liability whatsoever, to any party that uses or relies on this drawing without AECOM's express written consent. Do not scale this document. All measurements must be obtained from the stated dimensions.

ROADS (SCOTLAND) ACT 1984

THE CITY OF EDINBURGH COUNCIL (VARIOUS ROADS, EDINBURGH)
(REDETERMINATION OF MEANS OF EXERCISE OF PUBLIC
RIGHT OF PASSAGE) ORDER 202 - RSO/21/08

Plan showing the length of road which is to be Redetermined in terms of the above Order,
which will come into effect on --- day of --- 202_.
Executed by The City of Edinburgh Council this --- day of --- 202_.

(witness) signed on behalf of Executive Director of Place
Plan 9 of 17



AECOM

PROJECT
MEADOWS TO GEORGE STREET

CLIENT

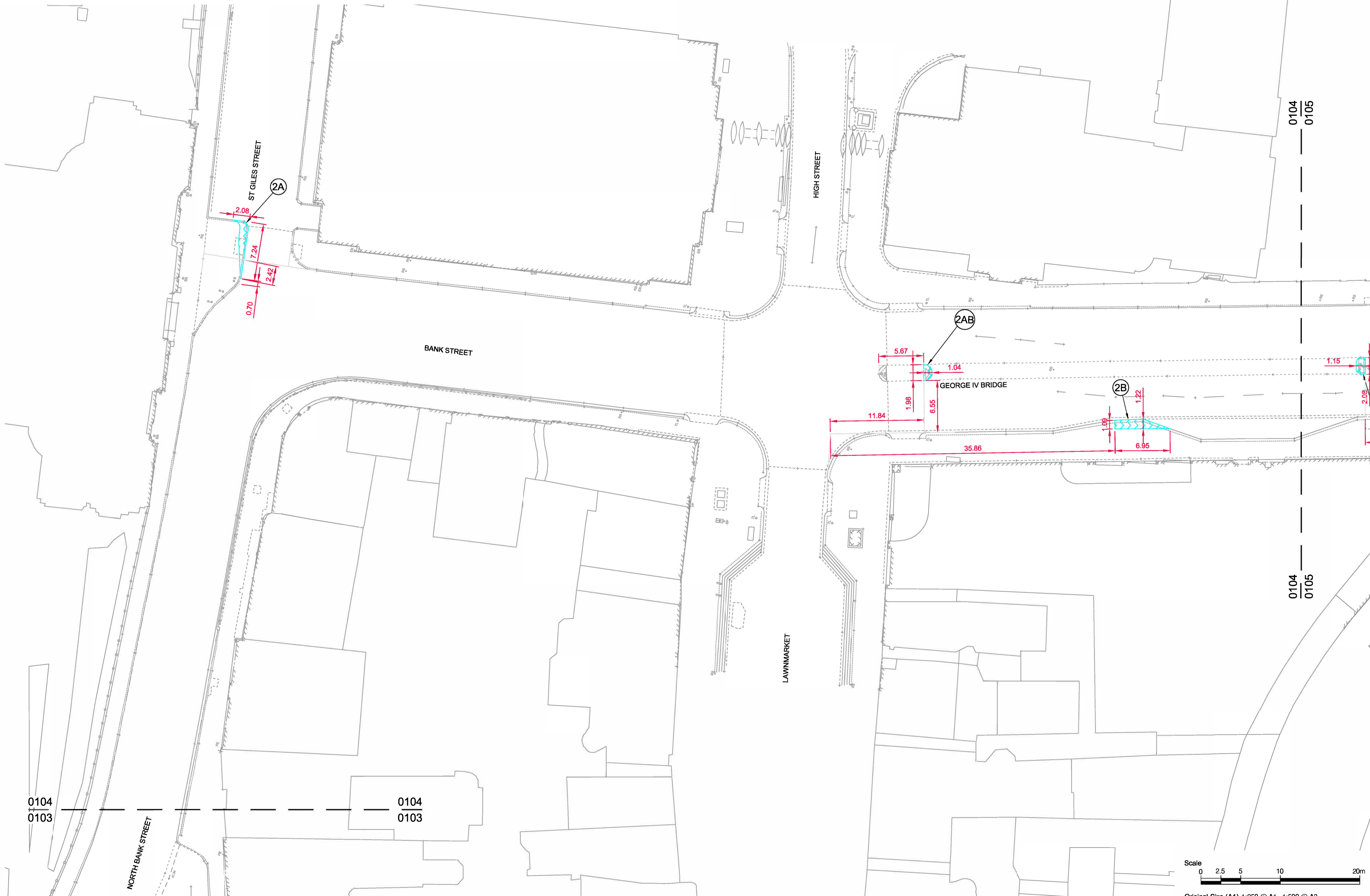
EDINBURGH
THE CITY OF EDINBURGH COUNCIL

CONSULTANT

AECOM
1 Tanfield
EDINBURGH, EH3 5DA
+44 (0) 131 301 8600 tel
+44 (0) 131 301 8699 fax
www.aecom.com

NOTES

KEY
 Existing footway redetermined as carriageway (2A, 2B, 2AB)



ISSUE/REVISION

I/R	DATE	DESCRIPTION
A	14/03/2024	RSO Updates
-	13/02/2024	FIRST ISSUE

KEY PLAN

**FOR INTERNAL CEC
USE ONLY**

PROJECT NUMBER

60579473

SHEET TITLE

MEADOWS TO GEORGE STREET
REDETERMINATION ORDERS
RSO DIMENSIONS - SHEET 9 OF 17

SHEET NUMBER

60579473-RSO-C-0208

Filename: L:\LEGACY\UKED\#P02\VT\PROJECTS\TRAFFIC - CL+ MEADOWS TO GEORGE ST1900_CAD_GIS DEVELOPED DESIGN\910_CAD\20-SHEETS\RSO DRAWINGS - 2024\60579473-RSO-C-0208\02016.DWG
 Last saved by: SWANSONAJ Last Plotted: 2024-04-09

Project Management Initials: Designer: MR Checked: PM Approved: PM ISO A1 594mm x 841mm

This drawing has been prepared for the use of AECOM's client. It may not be used, modified, reproduced or relied upon by third parties, except as agreed by AECOM or as required by law. AECOM accepts no responsibility, and denies any liability whatsoever, to any party that uses or relies on this drawing without AECOM's express written consent. Do not scale this document. All measurements must be obtained from the stated dimensions.