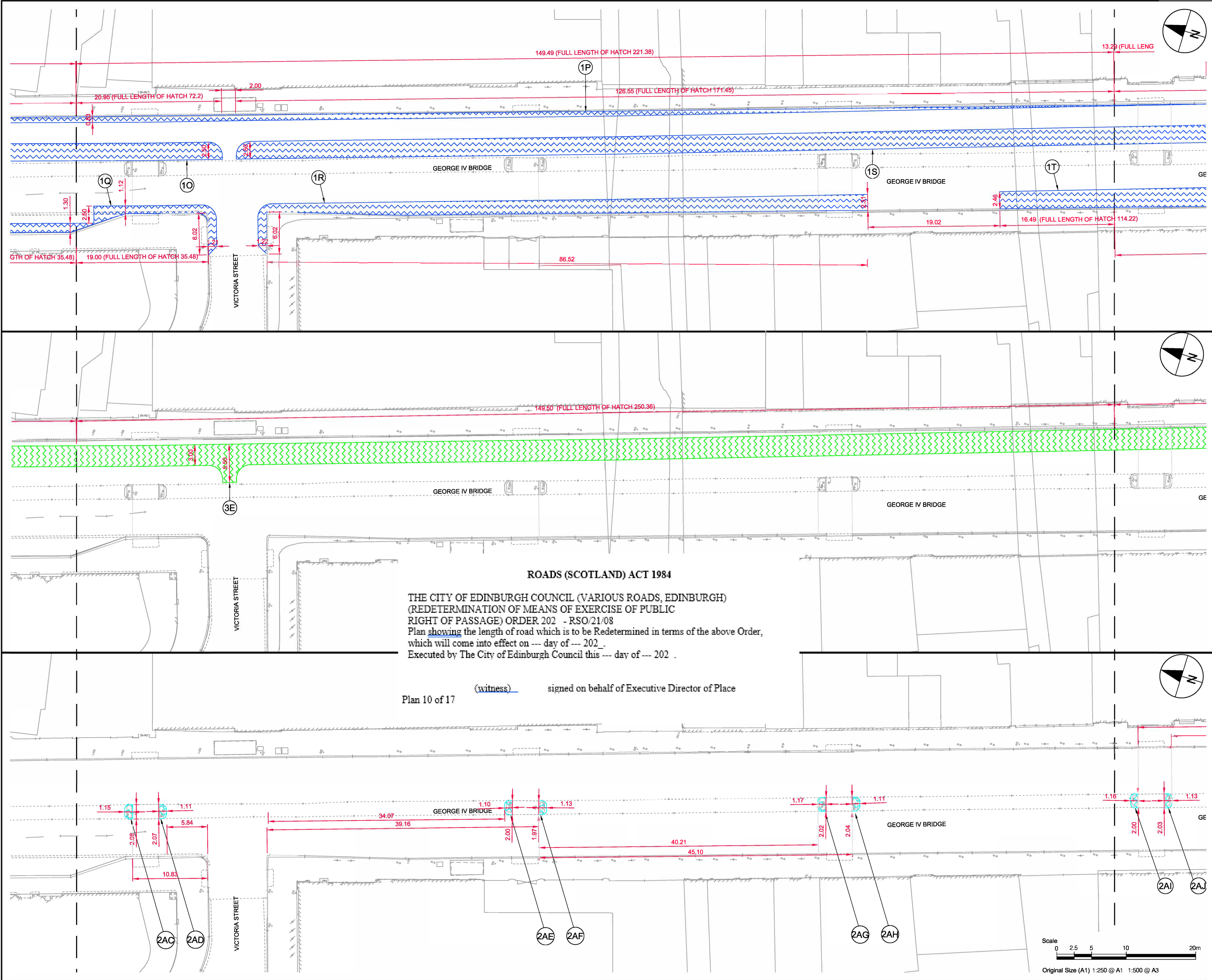


File name: L:\LEGACY\UKED\4#P02\1\TP\PROJECTS\TRAFFIC - CL+ MEADOWS TO GEORGE ST1900\_CAD\_GIS DEVELOPED DESIGN\1910\_CAD20-SHEETS\RSO DRAWINGS - 2024\60579473-RSO-C-0200\02016.DWG  
 Last saved by: SWANSONAJ Last Plotted: 2024-04-09  
 Project Management Initials: Designer: MR Checked: PM Approved: PM ISO A1 594mm x 841mm



**PROJECT**  
 MEADOWS TO GEORGE STREET

**CLIENT**



**CONSULTANT**  
 AECOM  
 1 Tanfield  
 EDINBURGH, EH3 5DA  
 +44 (0) 131 301 8600 tel  
 +44 (0) 131 301 8699 fax  
 www.aecom.com

**NOTES**

- KEY**
- Existing carriageway redetermined as footway (1P, 1Q, 1R, 1S, 1T)
  - Existing carriageway redetermined as cycletrack (3E)
  - Existing footway redetermined as carriageway (2AC, 2AD, 2AE, 2AF, 2AG, 2AH)

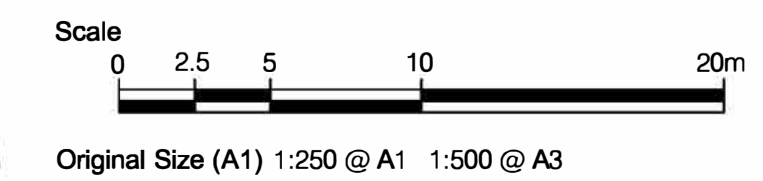
**ISSUE/REVISION**

NO	DATE	DESCRIPTION
A	14/03/2024	RSO Updates
-	13/02/2024	FIRST ISSUE
V/R	DATE	DESCRIPTION

**KEY PLAN**

**FOR INTERNAL CEC USE ONLY**

**PROJECT NUMBER**  
 60579473  
**SHEET TITLE**  
 MEADOWS TO GEORGE STREET  
 REDETERMINATION ORDERS  
 RSO DIMENSIONS - SHEET 10 OF 17  
**SHEET NUMBER**  
 60579473-RSO-C-0209



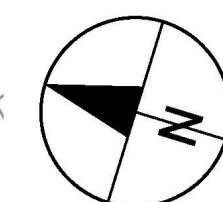
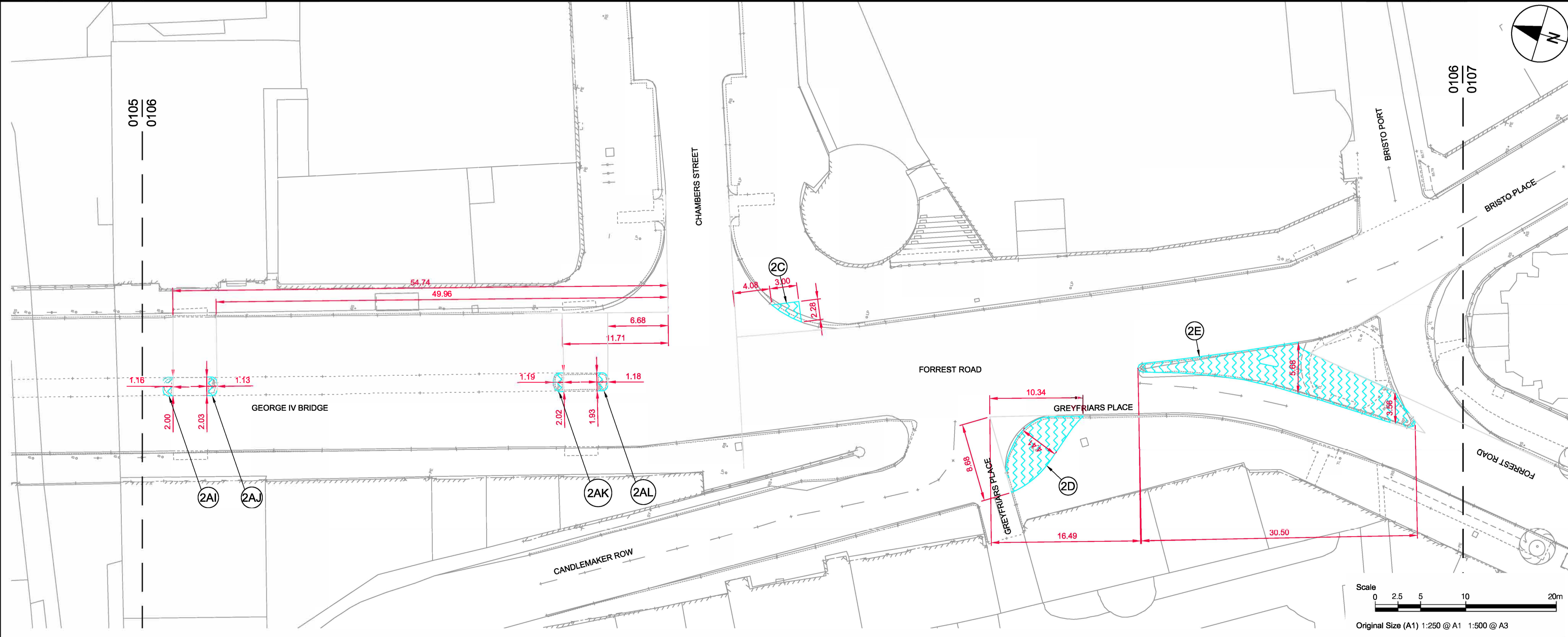
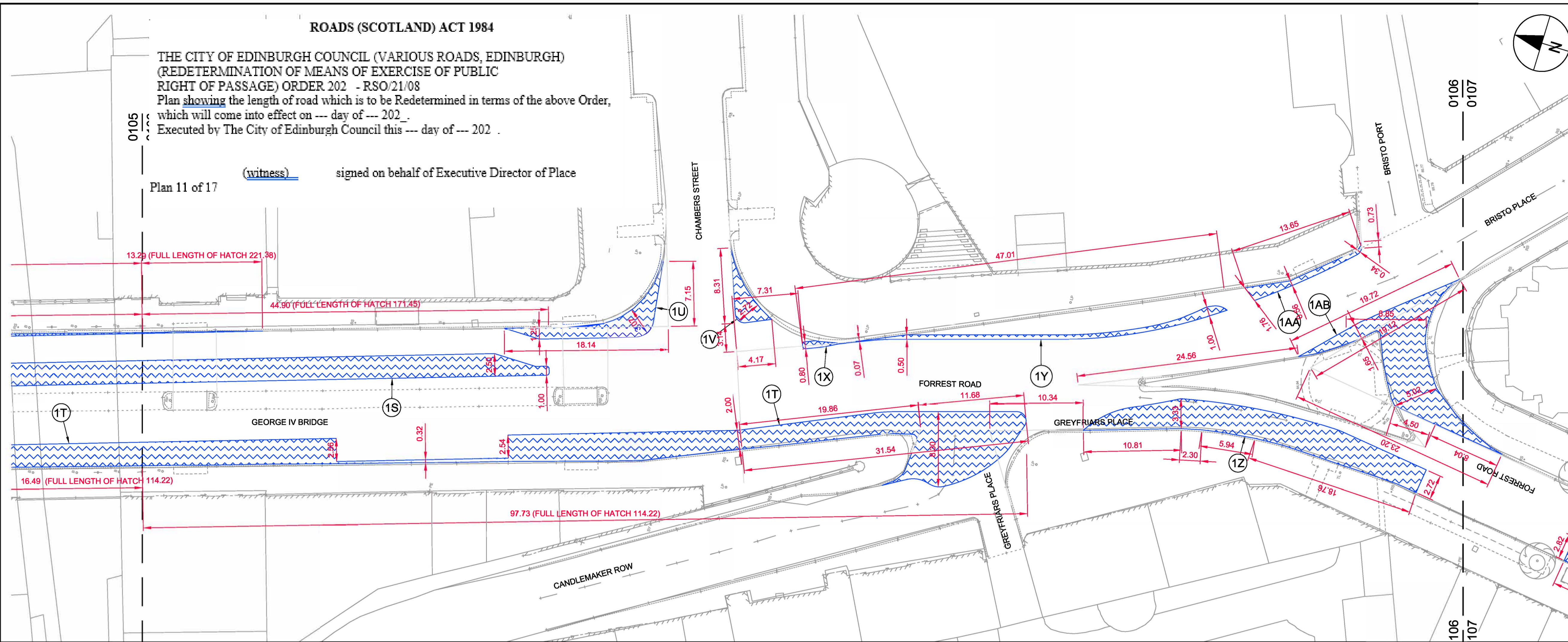
This drawing has been prepared for the use of AECOM's client. It may not be used, modified, reproduced or relied upon by third parties, except as agreed by AECOM or as required by law. AECOM accepts no responsibility, and denies any liability whatsoever, to any party that uses or relies on this drawing without AECOM's express written consent. All measurements must be obtained from the stated dimensions.



ROADS (SCOTLAND) ACT 1984

THE CITY OF EDINBURGH COUNCIL (VARIOUS ROADS, EDINBURGH)  
(REDETERMINATION OF MEANS OF EXERCISE OF PUBLIC  
RIGHT OF PASSAGE) ORDER 202 - RSO/21/08  
Plan showing the length of road which is to be Redetermined in terms of the above Order,  
which will come into effect on --- day of --- 202 .  
Executed by The City of Edinburgh Council this --- day of --- 202 .

(witness) signed on behalf of Executive Director of Place  
Plan 11 of 17



PROJECT  
MEADOWS TO GEORGE STREET

CLIENT  
EDINBURGH  
THE CITY OF EDINBURGH COUNCIL

CONSULTANT  
AECOM  
1 Tanfield  
EDINBURGH, EH3 5DA  
+44 (0) 131 301 8600 tel  
+44 (0) 131 301 8699 fax  
www.aecom.com

- NOTES
- KEY
- Existing carriageway redetermined as footway (1S, 1T, 1U, 1V, 1X, 1Y, 1Z, 1AA, 1AB)
  - Existing footway redetermined as carriageway (2A, 2AJ, 2AK, 2AL, 2C, 2D, 2E)

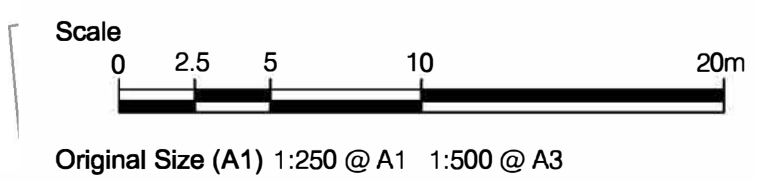
ISSUE/REVISION

NO	DATE	DESCRIPTION
B	08/04/2024	RSO Updates
A	14/03/2024	RSO Updates
-	13/02/2024	FIRST ISSUE
I/R	DATE	DESCRIPTION

KEY PLAN

FOR INTERNAL CEC USE ONLY

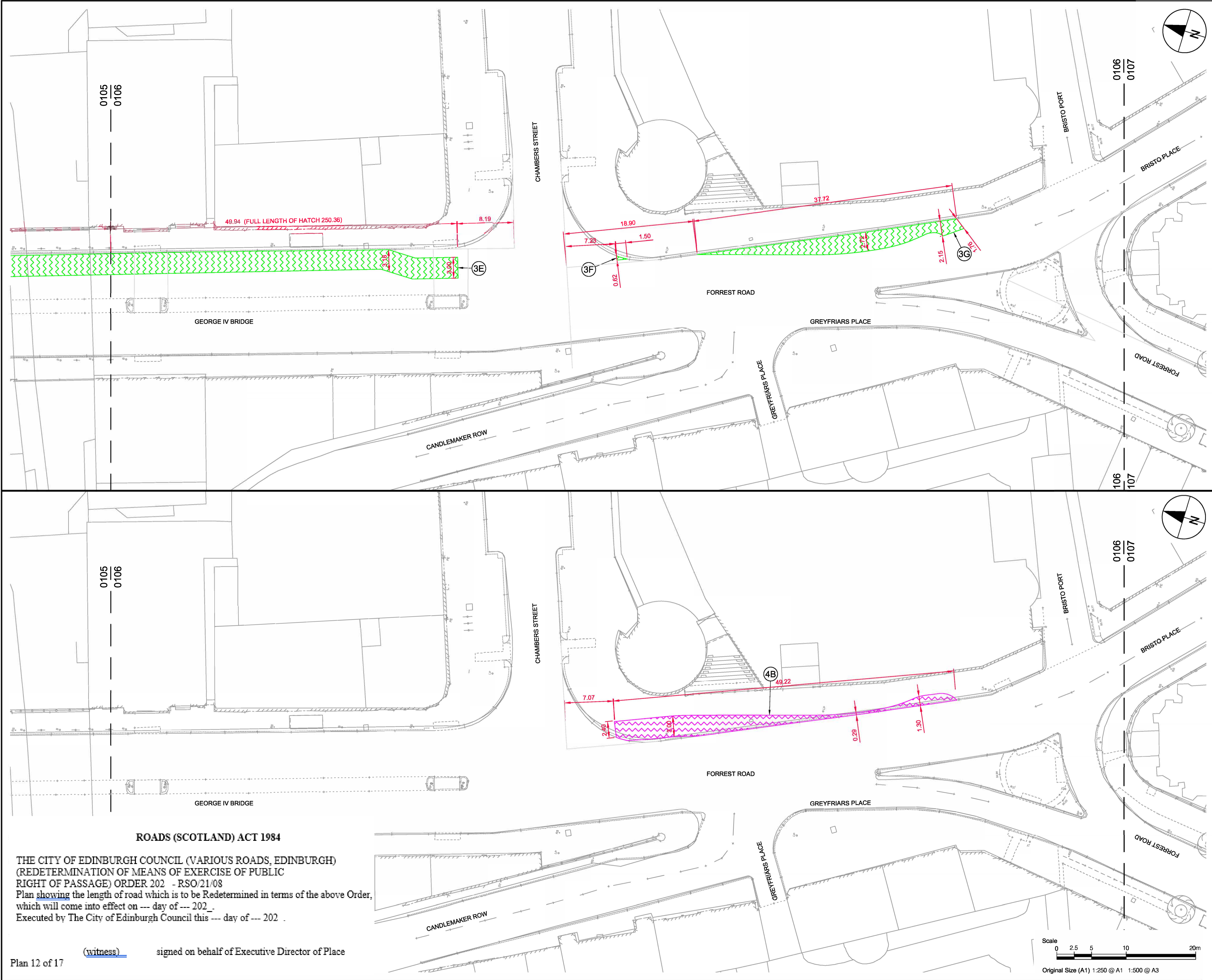
PROJECT NUMBER  
60579473  
SHEET TITLE  
MEADOWS TO GEORGE STREET  
REDETERMINATION ORDERS  
RSO DIMENSIONS - SHEET 11 OF 17  
SHEET NUMBER  
60579473-RSO-C-0210



This drawing has been prepared for the use of AECOM's client. It may not be used, modified, reproduced or relied upon by third parties, except as agreed by AECOM or as required by law. AECOM accepts no responsibility, and denies any liability whatsoever, to any party that uses or relies on this drawing without AECOM's express written consent. Do not scale this document. All measurements must be obtained from the stated dimensions.



File name: L:\LEGACY\UKED\402021\PROJECTS\TRAFFIC - CL+ MEADOWS TO GEORGE STREET\1900\_CAD\_GIS DEVELOPED DESIGN\910\_CAD\20-SHEETS\RSO DRAWINGS - 2024\60579473-RSO-C-0201\0216.DWG  
 Last saved by: SWANSONAJ Last Printed: 2024-04-09  
 Project Management Initials: Designer: MR Checked: PM Approved: PM ISO A1 594mm x 841mm



**PROJECT**  
MEADOWS TO GEORGE STREET

**CLIENT**



**CONSULTANT**  
 AECOM  
 1 Tanfield  
 EDINBURGH, EH3 5DA  
 +44 (0) 131 301 8600 tel  
 +44 (0) 131 301 8699 fax  
 www.aecom.com

**NOTES**

- KEY**
- Existing carriageway re-determined as cycletrack (3E, 3F, 3G)
  - Existing footway re-determined as cycletrack (4B)

**ISSUE/REVISION**

I/R	DATE	DESCRIPTION
A	14/03/2024	RSO Updates
-	13/02/2024	FIRST ISSUE

**KEY PLAN**

**FOR INTERNAL CEC USE ONLY**

**PROJECT NUMBER**  
60579473

**SHEET TITLE**  
MEADOWS TO GEORGE STREET  
REDETERMINATION ORDERS  
RSO DIMENSIONS - SHEET 12 OF 17

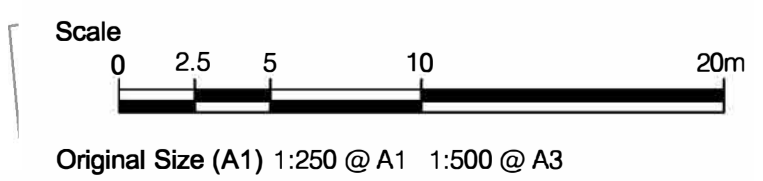
**SHEET NUMBER**  
60579473-RSO-C-0211

**ROADS (SCOTLAND) ACT 1984**

THE CITY OF EDINBURGH COUNCIL (VARIOUS ROADS, EDINBURGH)  
 (REDETERMINATION OF MEANS OF EXERCISE OF PUBLIC  
 RIGHT OF PASSAGE) ORDER 202 - RSO/21/08  
 Plan showing the length of road which is to be Redetermined in terms of the above Order,  
 which will come into effect on --- day of --- 202 .  
 Executed by The City of Edinburgh Council this --- day of --- 202 .

(witness) signed on behalf of Executive Director of Place

Plan 12 of 17

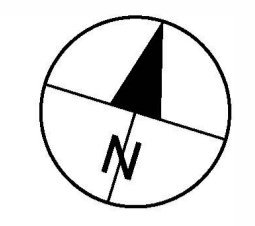
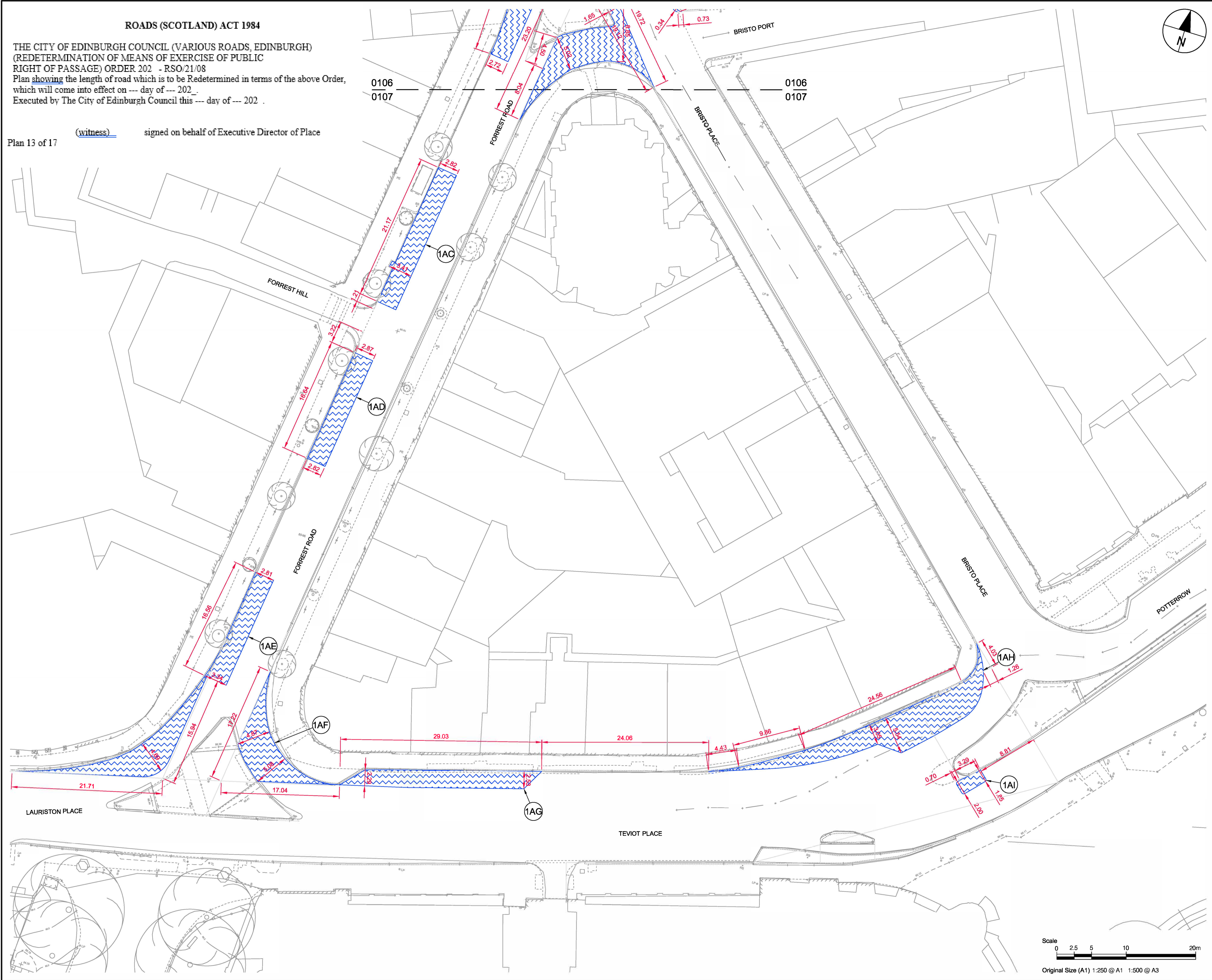




ROADS (SCOTLAND) ACT 1984

THE CITY OF EDINBURGH COUNCIL (VARIOUS ROADS, EDINBURGH)  
 (REDETERMINATION OF MEANS OF EXERCISE OF PUBLIC  
 RIGHT OF PASSAGE) ORDER 202 - RSO/21/08  
 Plan showing the length of road which is to be Redetermined in terms of the above Order,  
 which will come into effect on --- day of --- 202 .  
 Executed by The City of Edinburgh Council this --- day of --- 202 .

Plan 13 of 17 (witness) signed on behalf of Executive Director of Place



PROJECT  
**MEADOWS TO GEORGE STREET**

CLIENT



CONSULTANT  
 AECOM  
 1 Tanfield  
 EDINBURGH, EH3 5DA  
 +44 (0) 131 301 8600 tel  
 +44 (0) 131 301 8699 fax  
 www.aecom.com

NOTES

KEY  
 Existing carriageway redetermined as footway (1AC, 1AD, 1AE, 1AF, 1AG, 1AH, 1AI)

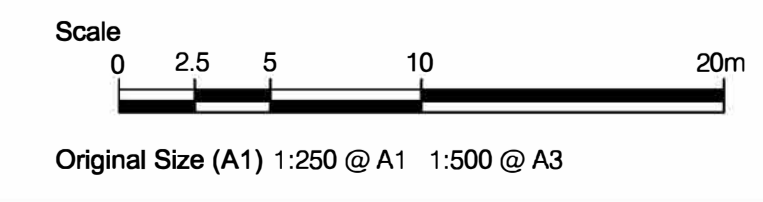
ISSUE/REVISION

NO	DATE	DESCRIPTION
A	14/03/2024	RSO Updates
-	13/02/2024	FIRST ISSUE
I/R	DATE	DESCRIPTION

KEY PLAN

FOR INTERNAL CEC USE ONLY

PROJECT NUMBER  
 60579473  
 SHEET TITLE  
 MEADOWS TO GEORGE STREET  
 REDETERMINATION ORDERS  
 RSO DIMENSIONS - SHEET 13 OF 17  
 SHEET NUMBER  
 60579473-RSO-C-0212



Filename: L:\LEGACY\UKED\4P02\17\PROJECTS\TRAFFIC - CL+ MEADOWS TO GEORGE ST1900\_CAD\_GIS DEVELOPED DESIGN\910\_CAD\20-SHEETS\RSO DRAWINGS - 2024\60579473-RSO-C-0212\021716.DWG  
 Last saved by: SWANSONAJ Last Plotted: 2024-04-09

This drawing has been prepared for the use of AECOM's client. It may not be used, modified, reproduced or relied upon by third parties, except as agreed by AECOM or as required by law. AECOM accepts no responsibility, and denies any liability whatsoever, to any party that uses or relies on this drawing without AECOM's express written consent. Do not scale this document. All measurements must be obtained from the stated dimensions.

ISO A1 594mm x 841mm  
 Approved: PM  
 Checked: PM  
 Designer: MR  
 Project Management Initials:

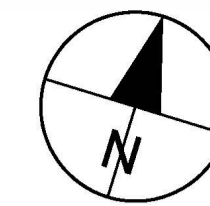


ROADS (SCOTLAND) ACT 1984

THE CITY OF EDINBURGH COUNCIL (VARIOUS ROADS, EDINBURGH)  
(REDETERMINATION OF MEANS OF EXERCISE OF PUBLIC  
RIGHT OF PASSAGE) ORDER 202 - RSO/21/08

Plan showing the length of road which is to be Redetermined in terms of the above Order,  
which will come into effect on --- day of --- 202 .  
Executed by The City of Edinburgh Council this --- day of --- 202 .

Plan 14 of 17 (witness) signed on behalf of Executive Director of Place



**AECOM**

PROJECT  
MEADOWS TO GEORGE STREET


CLIENT

**EDINBURGH**  
THE CITY OF EDINBURGH COUNCIL

CONSULTANT

AECOM  
1 Tanfield  
EDINBURGH, EH3 5DA  
+44 (0) 131 301 8600 tel  
+44 (0) 131 301 8699 fax  
www.aecom.com

NOTES

KEY  
 Existing footway redetermined as carriageway (2F, 2G, 2H, 2I)

ISSUE/REVISION

I/R	DATE	DESCRIPTION
A	14/03/2024	RSO Updates
-	13/02/2024	FIRST ISSUE

KEY PLAN

**FOR INTERNAL CEC  
USE ONLY**

PROJECT NUMBER

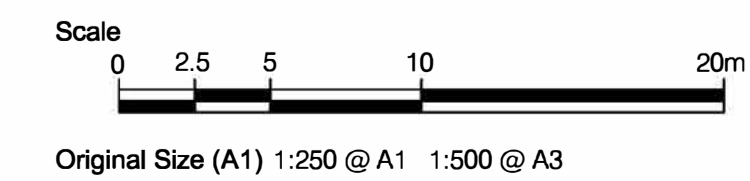
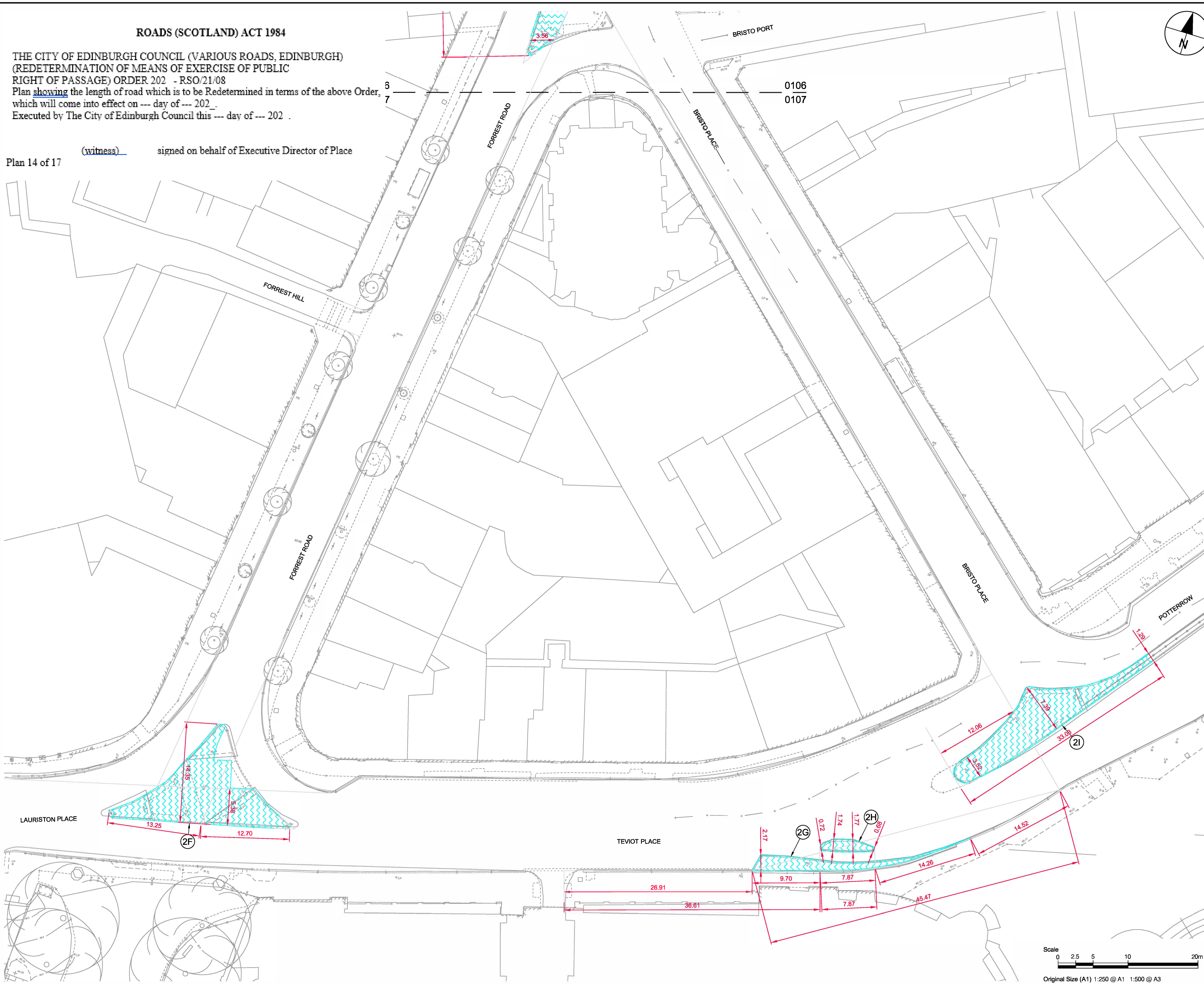
60579473

SHEET TITLE

MEADOWS TO GEORGE STREET  
REDETERMINATION ORDERS  
RSO DIMENSIONS - SHEET 14 OF 17

SHEET NUMBER

60579473-RSO-C-0213



File name: L:\LEGACY\UED\H02021\TP\PROJECTS\TRAFFIC - CL+ MEADOWS TO GEORGE STREET\1900\_CAD\_GIS DEVELOPED DESIGN\1910\_CAD\20-SHEETS\RSO DRAWINGS - 2024\60579473-RSO-C-0200\02016.DWG  
 Last saved by: SWANSONAJ Last Plotted: 2024-04-09

This drawing has been prepared for the use of AECOM's client. It may not be used, modified, reproduced or relied upon by third parties, except as agreed by AECOM or as required by law. AECOM accepts no responsibility, and denies any liability whatsoever, to any party that uses or relies on this drawing without AECOM's express written consent. Do not scale this document. All measurements must be obtained from the stated dimensions.



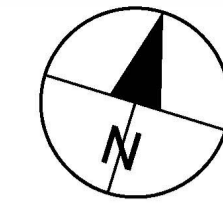
ROADS (SCOTLAND) ACT 1984

THE CITY OF EDINBURGH COUNCIL (VARIOUS ROADS, EDINBURGH)  
(REDETERMINATION OF MEANS OF EXERCISE OF PUBLIC  
RIGHT OF PASSAGE) ORDER 202 - RSO/21/08

Plan showing the length of road which is to be Redetermined in terms of the above Order,  
which will come into effect on --- day of --- 202\_.

(witness) signed on behalf of Executive Director of Place

Plan 15 of 17



**AECOM**

PROJECT  
MEADOWS TO GEORGE STREET

CLIENT

**EDINBURGH**  
THE CITY OF EDINBURGH COUNCIL

CONSULTANT

AECOM  
1 Tanfield  
EDINBURGH, EH3 5DA  
+44 (0) 131 301 8600 tel  
+44 (0) 131 301 8699 fax  
www.aecom.com

NOTES

KEY  
Existing carriageway  
redetermined as cycletrack  
(3J)

ISSUE/REVISION

I/R	DATE	DESCRIPTION
A	14/03/2024	RSO Updates
-	13/02/2024	FIRST ISSUE

KEY PLAN

**FOR INTERNAL CEC  
USE ONLY**

PROJECT NUMBER

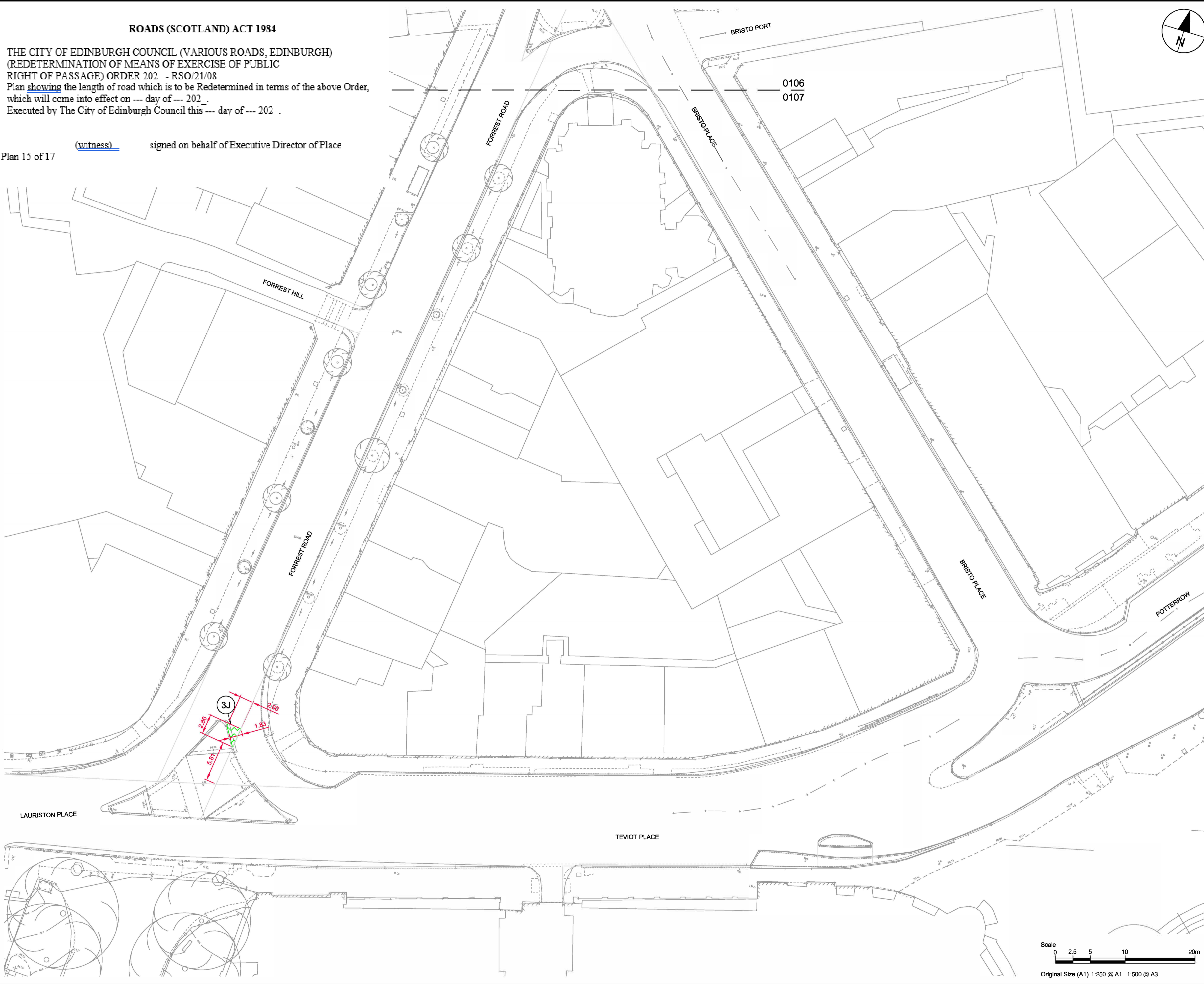
60579473

SHEET TITLE

MEADOWS TO GEORGE STREET  
REDETERMINATION ORDERS  
RSO DIMENSIONS - SHEET 15 OF 17

SHEET NUMBER

60579473-RSO-C-0214



Filename: L:\LEGACY\KED\H02\VT\PROJECTS\TRAFFIC - CL+ MEADOWS TO GEORGE ST1900\_CAD\_GIS DEVELOPED DESIGN\910\_CAD\20-SHEETS\RSO DRAWINGS -  
 20240509\73-RSO-C-0200\0214.DWG  
 Last saved by: SWANSONAJ Last Plotted: 2024-04-09

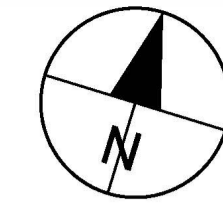
Project Management Initials: Designer: MR Checked: PM Approved: PM ISO A1 594mm x 841mm

This drawing has been prepared for the use of AECOM's client. It may not be used, modified, reproduced or relied upon by third parties, except as agreed by AECOM or as required by law. AECOM accepts no responsibility, and denies any liability whatsoever, to any party that uses or relies on this drawing without AECOM's express written consent. Do not scale this document. All measurements must be obtained from the stated dimensions.



ROADS (SCOTLAND) ACT 1984

THE CITY OF EDINBURGH COUNCIL (VARIOUS ROADS, EDINBURGH)  
 (REDETERMINATION OF MEANS OF EXERCISE OF PUBLIC  
 RIGHT OF PASSAGE) ORDER 202 - RSO/21/08  
 Plan showing the length of road which is to be Redetermined in terms of the above Order,  
 which will come into effect on --- day of --- 202 .  
 Executed by The City of Edinburgh Council this --- day of --- 202 .



**AECOM**

PROJECT  
**MEADOWS TO GEORGE STREET**

CLIENT

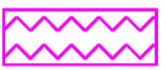
**EDINBURGH**  
 THE CITY OF EDINBURGH COUNCIL

CONSULTANT

AECOM  
 1 Tanfield  
 EDINBURGH, EH3 5DA  
 +44 (0) 131 301 8600 tel  
 +44 (0) 131 301 8699 fax  
 www.aecom.com

NOTES

KEY

 Existing footway  
 redetermined as cycletrack  
 (4C)

ISSUE/REVISION

I/R	DATE	DESCRIPTION
A	14/03/2024	RSO Updates
-	13/02/2024	FIRST ISSUE

KEY PLAN

**FOR INTERNAL GEC  
 USE ONLY**

PROJECT NUMBER

60579473

SHEET TITLE

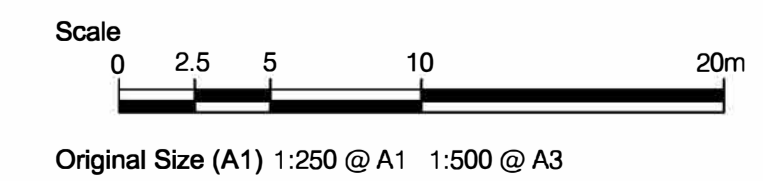
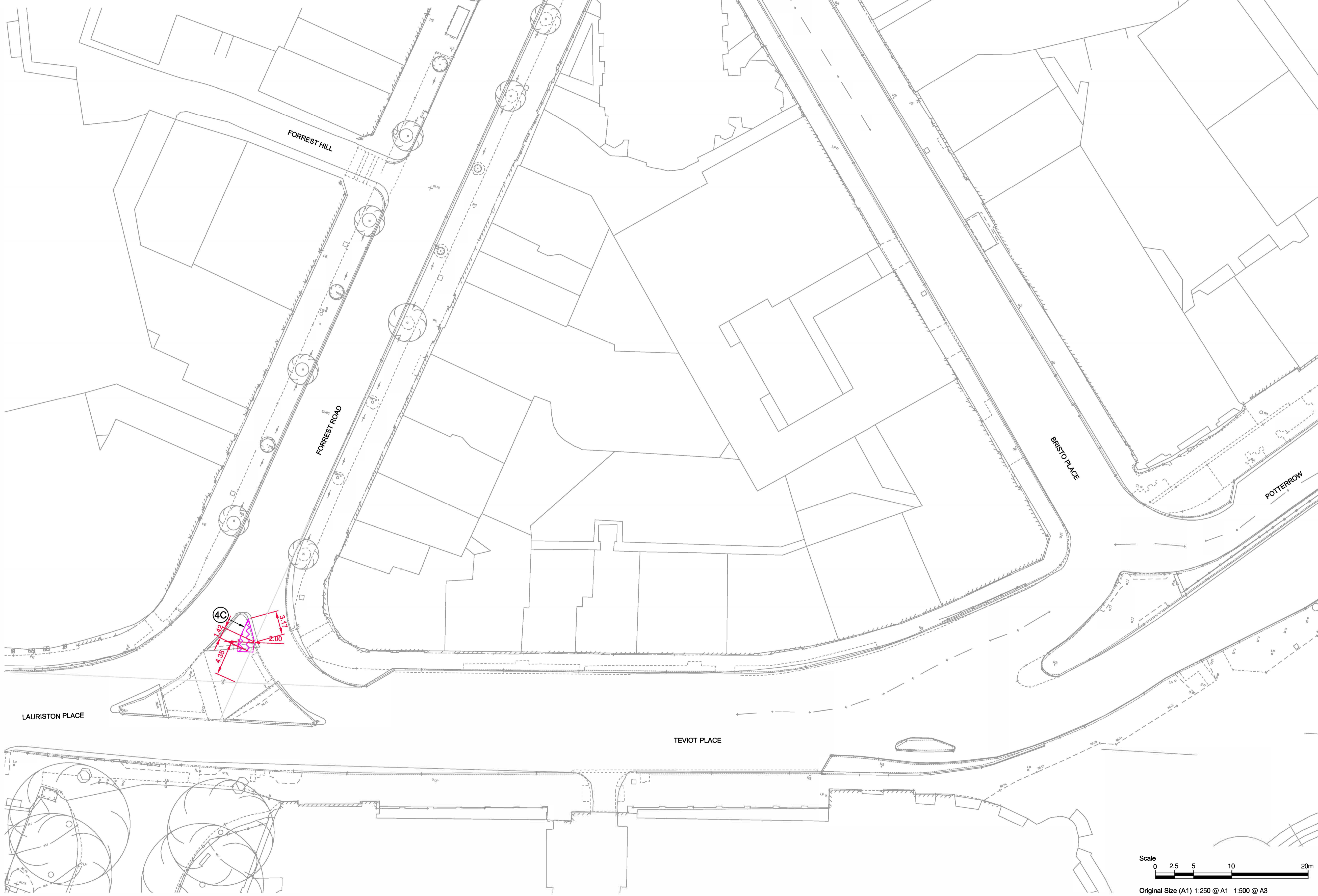
MEADOWS TO GEORGE STREET  
 REDETERMINATION ORDERS  
 RSO DIMENSIONS - SHEET 16 OF 17

SHEET NUMBER

60579473-RSO-C-0215

Plan 16 of 17

(witness) signed on behalf of Executive Director of Place

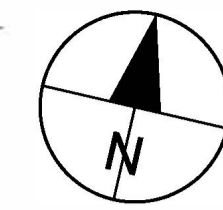


This drawing has been prepared for the use of AECOM's client. It may not be used, modified, reproduced or relied upon by third parties, except as agreed by AECOM or as required by law. AECOM accepts no responsibility, and denies any liability whatsoever, to any party that uses or relies on this drawing without AECOM's express written consent. Do not scale this document. All measurements must be obtained from the stated dimensions.

Filename: L:\LEGACY\UK\EDINBURGH\PROJECTS\TRAFFIC - CL+ MEADOWS TO GEORGE STREET\1900\_CAD\_GIS DEVELOPED DESIGN\1910\_CAD\20-SHEETS\RSO DRAWINGS - 2024\60579473-RSO-C-0200\0216.DWG  
 Last saved by: SWANSONAJ Last Plotted: 2024-04-09

Project Management Initials: Designer: MR Checked: PM Approved: PM ISO A1 594mm x 841mm





- Existing carriageway redetermined as footway (1BF, 1BG, 1BH)
- Existing footway redetermined as carriageway (2AM)

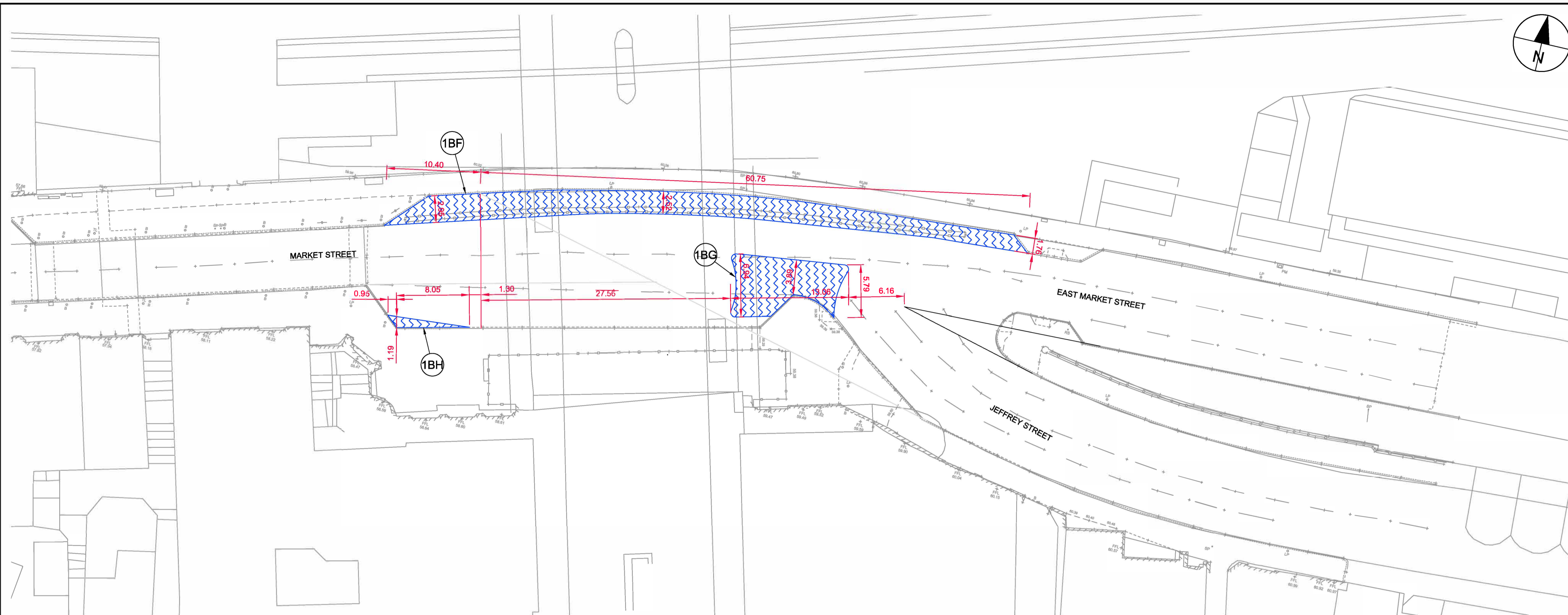
I/R	DATE	DESCRIPTION
B	08/04/2024	RSO Updates
A	14/03/2024	RSO Updates
-	13/02/2024	FIRST ISSUE

FOR INTERNAL CEC  
USE ONLY

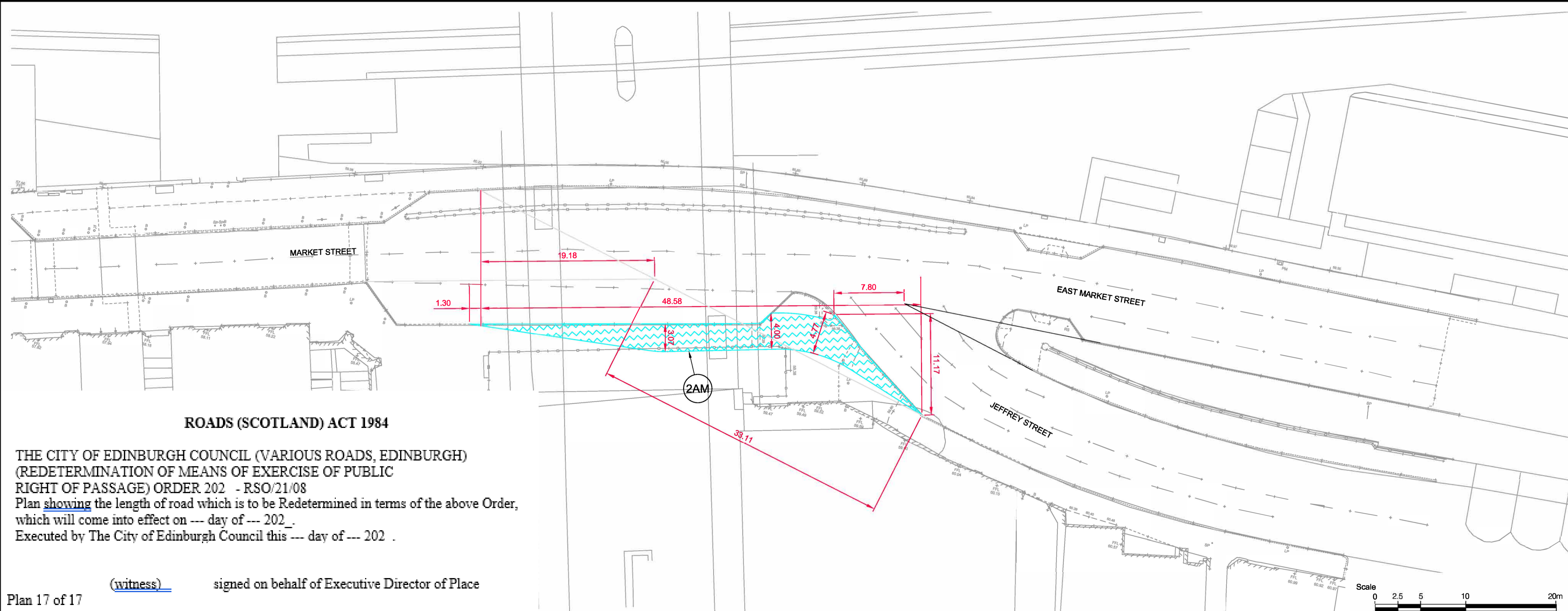
60579473

MEADOWS TO GEORGE STREET  
 REDETERMINATION ORDERS  
 RSO DIMENSIONS - SHEET 17 OF 17

60579473-RSO-C-0216



**VIEWPORT 1**

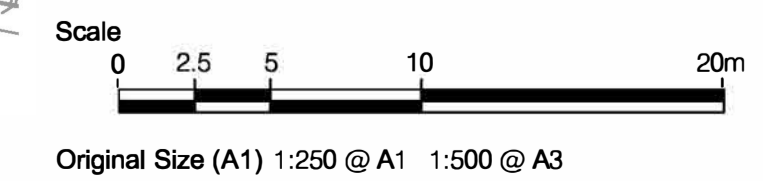


**VIEWPORT 2**

**ROADS (SCOTLAND) ACT 1984**

THE CITY OF EDINBURGH COUNCIL (VARIOUS ROADS, EDINBURGH)  
 (REDETERMINATION OF MEANS OF EXERCISE OF PUBLIC  
 RIGHT OF PASSAGE) ORDER 202 - RSO/21/08  
 Plan showing the length of road which is to be Redetermined in terms of the above Order,  
 which will come into effect on --- day of --- 202 .  
 Executed by The City of Edinburgh Council this --- day of --- 202 .

Plan 17 of 17 (witness) signed on behalf of Executive Director of Place



This drawing has been prepared for the use of AECOM's client. It may not be used, modified, reproduced or relied upon by third parties, except as agreed by AECOM or as required by law. AECOM accepts no responsibility, and denies any liability whatsoever, to any party that uses or relies on this drawing without AECOM's express written consent. Do not scale this document. All measurements must be obtained from the stated dimensions.