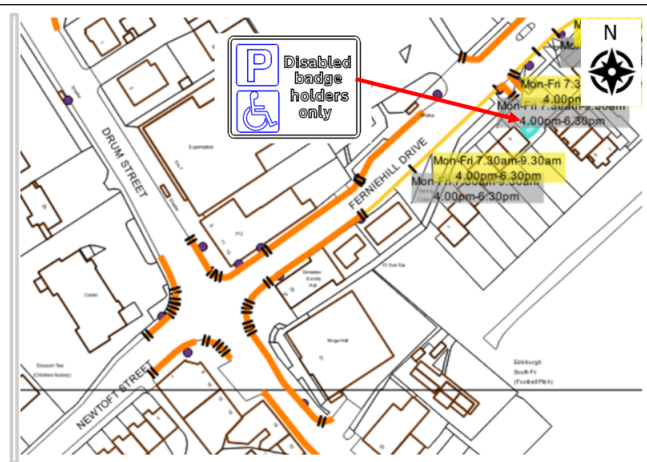


Appendix 3 – Amendments to existing DPPPs and redefining parking bays

Location 1- Ferniehill Drive



Location of amended bay : parking area next to 10 Ferniehill Drive

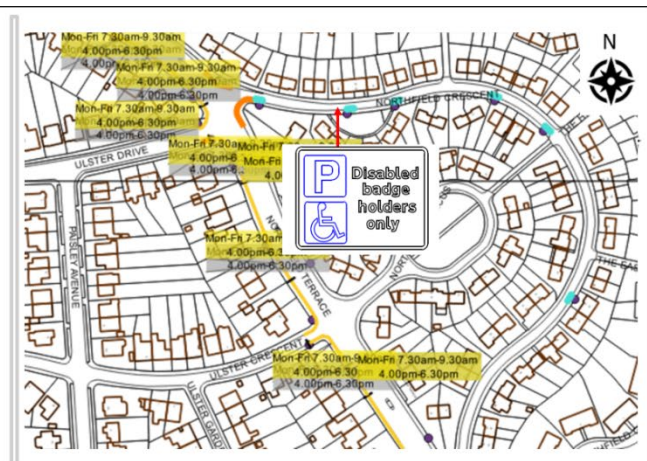
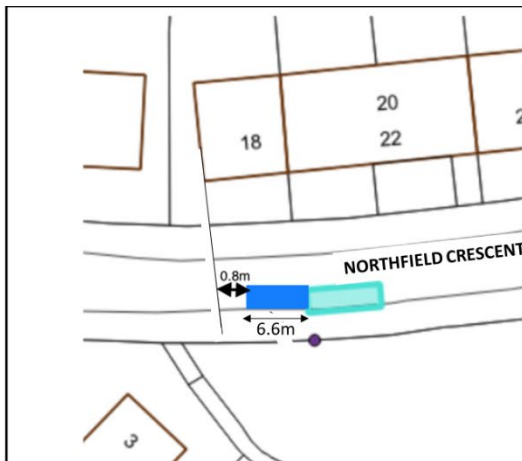
TRO Location Plan: Ferniehill Drive

(Currently there are one legal disabled parking and two advisory disabled parking places next to 10 Ferniehill Drive, all them are end-on bays)
To legalise the two-advisory disabled parking places, extend the legal disabled parking bay to a length of 11.0m and to a width throughout of 5.0m.

The DPPP was approved by CEC Housing team as the bay is proposed in Housing land.

EDINBURGH THE CITY OF EDINBURGH COUNCIL	
AMEND EXISTING DISABLED BAY LOCATION: Ferniehill Drive	
Drawing:	Appendix 3-loc 34005975
Date:	Sep 2023

Location 2 – Northfield Crescent



Location of amended bay : opposite 20 Northfield Crescent
(**DPPP marked at a non-standard size)

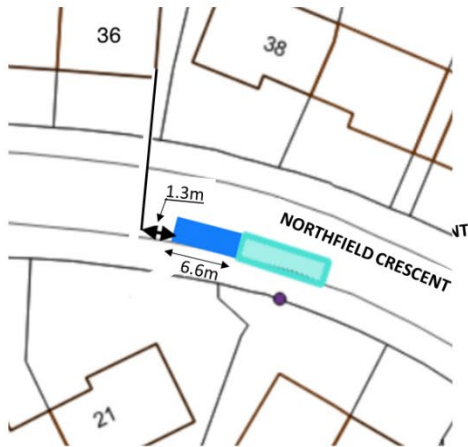
TRO Location Plan: Northfield Crescent

Make 2 parallel disabled parking bays at 20 Northfield Crescent.
Start at the west end of the existing DPPP and extend 6.6m westwards keeping a width throughout of 2.5m.

**width of road not sufficient for minimum standard width of disabled parking bay (2.7m).

EDINBURGH THE CITY OF EDINBURGH COUNCIL	
AMEND EXISTING DISABLED BAY LOCATION: Northfield Crescent	
Drawing:	Appendix 3-loc ERS- GR
Date:	Sep 2023

Location 3 – Northfield Crescent



Location of amended bay : opposite 40 Northfield Crescent (**DPPP marked at a non-standard size)

Make 2 parallel disabled parking bays at opposite number 40 Northfield Crescent. Start at the west end of the existing DPPP and extend 6.6m westwards keeping a width throughout of 2.4m.

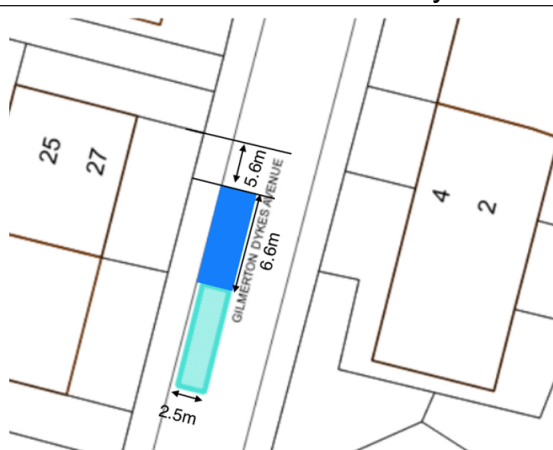
**width of road not sufficient for minimum standard width of disabled parking bay (2.7m).



TRO Location Plan: Northfield Crescent

EDINBURGH THE CITY OF EDINBURGH COUNCIL	
AMEND EXISTING DISABLED BAY LOCATION: Northfield Crescent	
Drawing:	Appendix 3-loc ERS -GR
Date:	Sep 2023

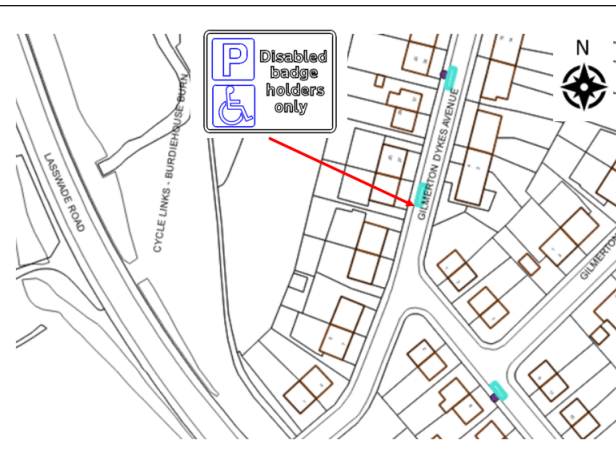
Location 4 – Gilmerton Dykes Avenue



Location of amended bay : opposite 2 Gilmerton Dykes Avenue (**DPPP marked at a non-standard size)

Make 2 parallel disabled parking bays at 2 Gilmerton Dykes Avenue. Start at the north-east end of the existing DPPP and extend 6.6m north eastwards keeping a width throughout of 2.5m.

**width of road not sufficient for minimum standard width of disabled parking bay (2.7m).



TRO Location Plan: Gilmerton Dykes Avenue

EDINBURGH THE CITY OF EDINBURGH COUNCIL	
AMEND EXISTING DISABLED BAY LOCATION: Gilmerton Dykes Avenue	
Drawing:	Appendix 3-loc 34006249
Date:	Sep 2023

Location 5 – Junction Place

