








PROPOSALS MAP

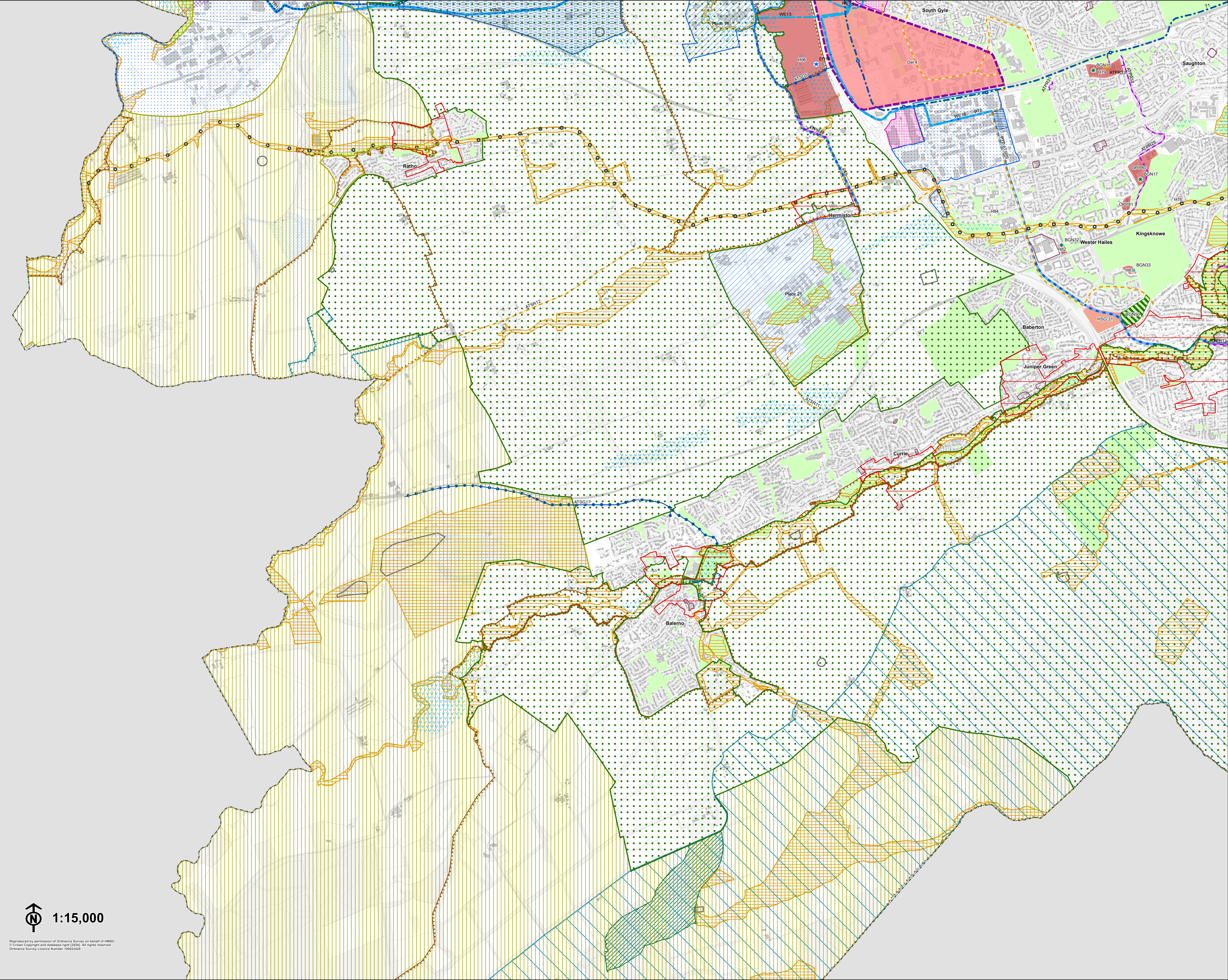
City Plan 2030
November 2024

The City of Edinburgh Council Boundary
General plan - wide policies

Proposals Map designations and relevant policies and proposals in the Written Statement

-  Urban Area - refers to all LDP area outwith the Green Belt and Countryside Policy Area
-  City Centre
-  City Centre Proposal
-  Edinburgh Waterfront
-  World Heritage Site
-  Designated Conservation Area
-  Scheduled Ancient Monument (including Union Canal)
-  Historic Garden / Designed Landscape - Inventory Site
-  Green Belt
-  Countryside Policy Area
-  Special Landscape Area
-  International and National Natural Heritage Designation (Natura 2000 Site and/or SSSI)
-  Local Nature Conservation Site
-  Local Nature Reserve
-  Area of Importance for Flood Management
-  Open Space
-  Green/Blue Network Proposal (BGN 1 - 57)
-  Pentland Hills Regional Park
-  Housing Proposal (H/OPP 1 - 96)
-  LDP Legacy Sites
-  Education Infrastructure (ED 1-16)
-  Strategic Business Centre
-  Business and Industry Area
-  Area of Economic Importance
-  Safeguard for Potential Relocation of Royal Highland Centre
-  Local Centre
-  Town Centre
-  City Centre Retail Core
-  Commercial Centre
-  Speciality Shopping Street
-  Proposed New Centres
-  Existing Tram Route
-  Tram Route Safeguard Proposal and Option Safeguards (TR1-11)
-  Public Transport Other Safeguards (PTSG 1-3)
-  Strategic Active Travel Project and Safeguards (ATSR 1-16)
-  Active Travel Mobility Hub
-  Active Travel Proposals relating to Development sites
-  Road Improvements (R 1-10)
-  Orbital Bus routes and improved connections (PT 1-17)
-  Active Travel Safeguards - local connections/Entry points (ATSG 1-27)
-  West Edin Transport Improvements (WE1-40)
-  Safeguard for Potential Additional Runway
-  Airport Public Safety Zone
-  Safeguarded Waste Management Facility
-  Minerals Site

Env 1-12, Env 14-17, Env 19-21, Env 23-38, Inf 1-8, Inf 10, Inf 12, Inf 14, Inf 16, Inf 18-19, Inf 21-22, Re 1, Re 7-8, Re 11, Hou 2-7, Econ 1, 3, 7
Econ 2, 5, Hou 1, Re 7-8, Re 10
Place 1, Econ 3, Inf 9, Re 9
Place 1, Hou 1, Housing Proposal CC3, (Table 2), Inf 9
Place 2, Hou 1, Re 9, Econ 4
Env 9
Env 13, Env 14
Env 16
Env 15
Env 18
Env 18
Env 19
Env 21
Env 21
Env 21
Env 35
Env 23 - 24
Table 1
Env 22
Hou 1, Table 2, Table 15
Hou 1, Table 2
Inf 1, Inf 3, Table 11
Econ 3
Econ 4
Places nos. 31, 20, 17, 21, 16, 18
Place 20
Re 5, 9; Econ 3, Table 14
Re 3-4, 9; Econ 3, Table 14
Re 2, 4, Table 14
Re 6; Econ 3, Table 14
Re 8
Re 5, Table 14
Inf 3-4, Inf 11, Table 7
Inf 11, Table 7
Inf 3, Inf 4, Inf 11, Table 10
Inf 3, Inf 4, Inf 11, Table 3
Inf 6 - 8, Inf 12, Tables 4, 8
Inf 3, Inf 4, Inf 11, Table 4
Inf 3, Inf 4, Table 9, Tra 9
Inf 3, Inf 4, Inf 11, Table 6
Inf 3, Inf 4, Inf 10, Table 5
Inf 3, Inf 4, Inf 11, Inf 13, Table 8
Place 17
Inf 15
Inf 17-19
Inf 20, Inf 18



1:15,000

Reproduced by permission of Ordnance Survey on behalf of HMGO. © Crown Copyright and database right (2024). All rights reserved. Ordnance Survey Licence Number: 100023420.

Please note Local Biodiversity and Local Geology Sites are not shown on printed and PDF formats of this map. These can be viewed using the online map available at edinburgh.gov.uk/cityplan2030.