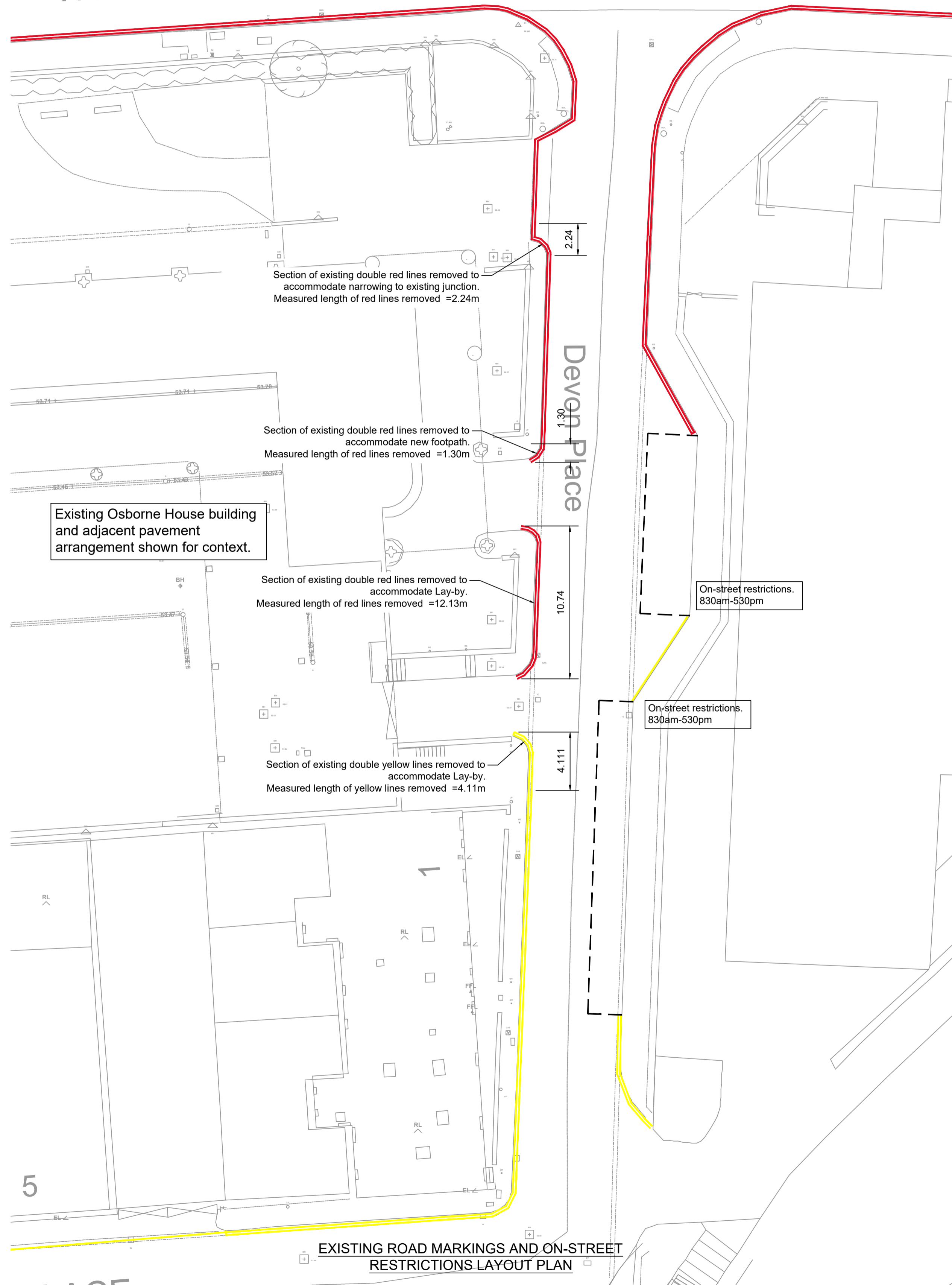


On-street restrictions.
830am-530pm

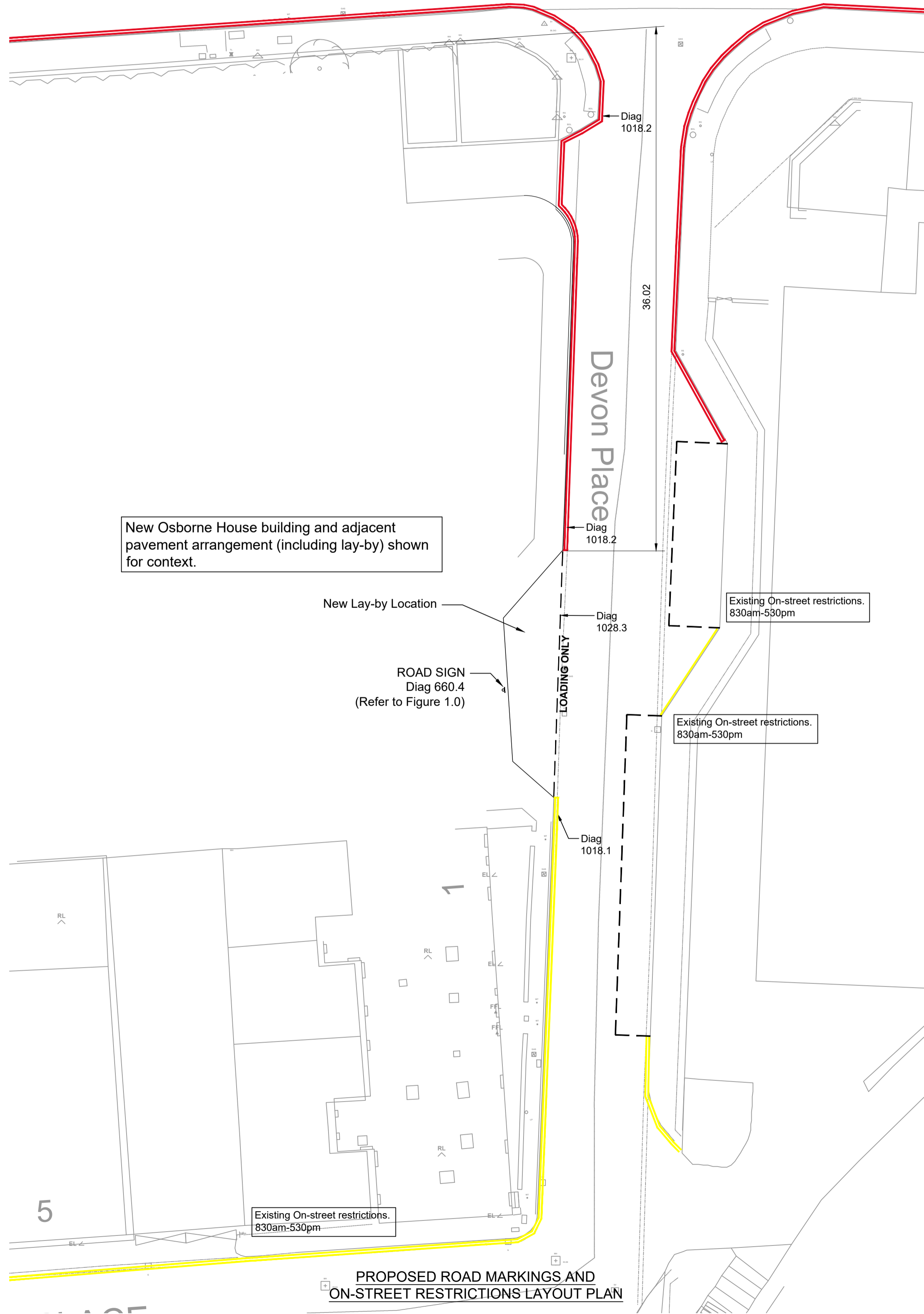
West Coates



EXISTING ROAD MARKINGS AND ON-STREET RESTRICTIONS LAYOUT PLAN

Existing On-street restrictions.
830am-530pm

West Coates



PROPOSED ROAD MARKINGS AND ON-STREET RESTRICTIONS LAYOUT PLAN

Note:
Diagram references given on this drawing relate to those given in the traffic signs regulation and general directions 2022 publications and traffic signs manual - Chapter 5 road markings 2003.

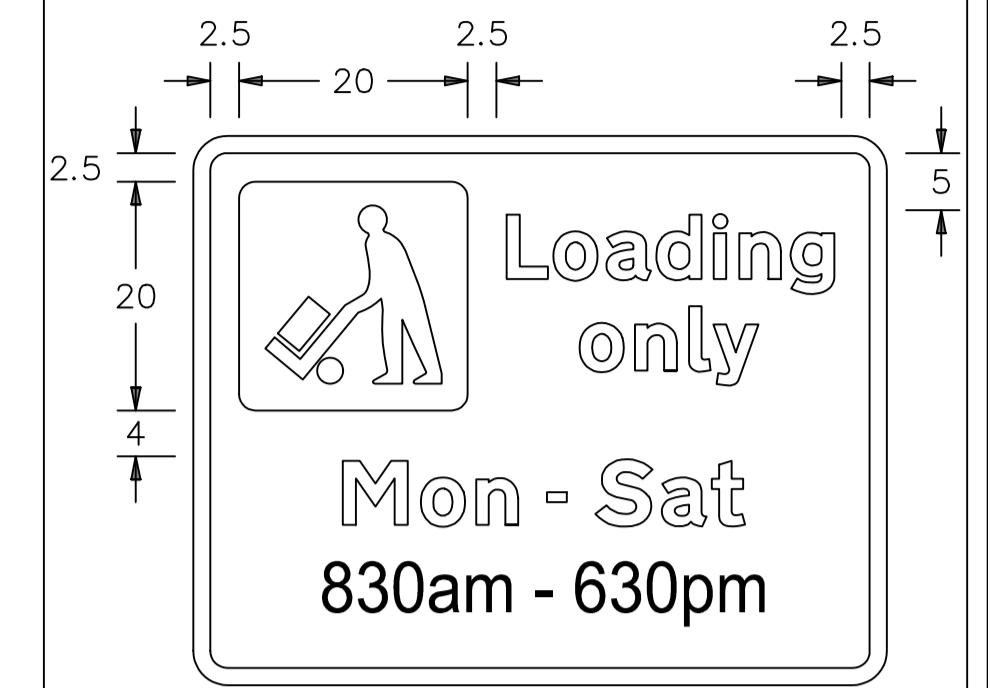


FIGURE 1.0
Diag 660.4 (proposed variation)



APPROVAL

| Rev | Description | Date | By | Checked |
|-----|--|----------|----|---------|
| P01 | Dimension from West Coates to new lay-by added, update following council comments and drawing split to show existing and proposed arrangement. | 30/01/24 | JC | JC |
| P02 | Dimensions updated following council comments. | 26/03/24 | JC | JC |

Client
S Harrison Developments Ltd

Project
Osborne House, Edinburgh

Title
Traffic Regulation Order (TRO)

| Scale | Date | Drawn | Checked |
|----------|----------|-------|---------|
| 1:100@A1 | 21.09.22 | LM | JPC |

ETIVE
CONSULTING ENGINEERS

Etive Consulting Engineers Ltd
22 Rutland Street
Edinburgh
EH1 2AN

Internal Project Reference Number
22052

Drawing Number
22052-ETV-95-XX-DR-C-007 P02