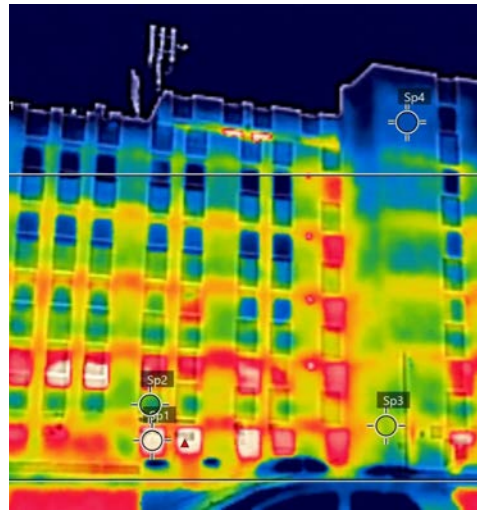


### BUILDING SURVEYS - DRONE THERMAL IMAGING AND DRONE PHOTOGRAPHY

As part of the information gathering for each building the project team have commissioned photography and thermal imaging surveys which, due to the height and scale of the buildings, can only be carried out by aerial drones.

Flying the drones is dependant on weather, and we've outlined dates when the surveys are likely to take place. Closer to the date and once the weather forecast will be more accurate, posters will be placed in the main lobbies of each block confirming the days when the surveys will take place. Please note, the drones will be flown by certified drone pilots in accordance with all relevant guidance and regulations.



Example of thermal image survey

#### Thermal Imaging - between 10<sup>th</sup> and 15<sup>th</sup> May

This will identify external areas of heat loss from the building, allowing the project team to understand how the building performs and which areas or elements lose the most energy. This survey will be carried out by IRT Surveys during the hours of darkness - please see the accompanying slip for further information.

#### Drone Photography - between 15<sup>th</sup> and 19<sup>th</sup> May

This will capture high-resolution photos of the external walls, cladding panels, and roof of each block. This will help the team to identify areas for repair and will provide an accurate record of the building's facade prior to any works taking place. Only external areas will be included in the survey drone photography, which will be carried out by Collective Architecture.

Our drone pilot and assistant will be on site between 10am and 5pm on days with suitable cloud cover to avoid high-contrast shadows on the external walls from direct sunlight. They will operate the drone externally (from the surrounding streets and areas adjacent to each building). Please note, the pilot and assistant will not need access inside of your property.

### HISTORIC PHOTOS - EXTERNAL AND INTERNAL

#### Can you help?

We're looking to gather historic photos of both Cables Wynd House and Linksvie House to help with understanding the history of each building and the lives of the people who have lived in them over the decades. These could be of family gatherings, birthday parties or just photos of a flat.

If you can share any photos please email them to [engage@collectivearchitecture.co.uk](mailto:engage@collectivearchitecture.co.uk)

# CABLES WYND HOUSE AND LINKSVIEW HOUSE

## RETROFIT AND PLACEMAKING RESIDENT UPDATE



working with

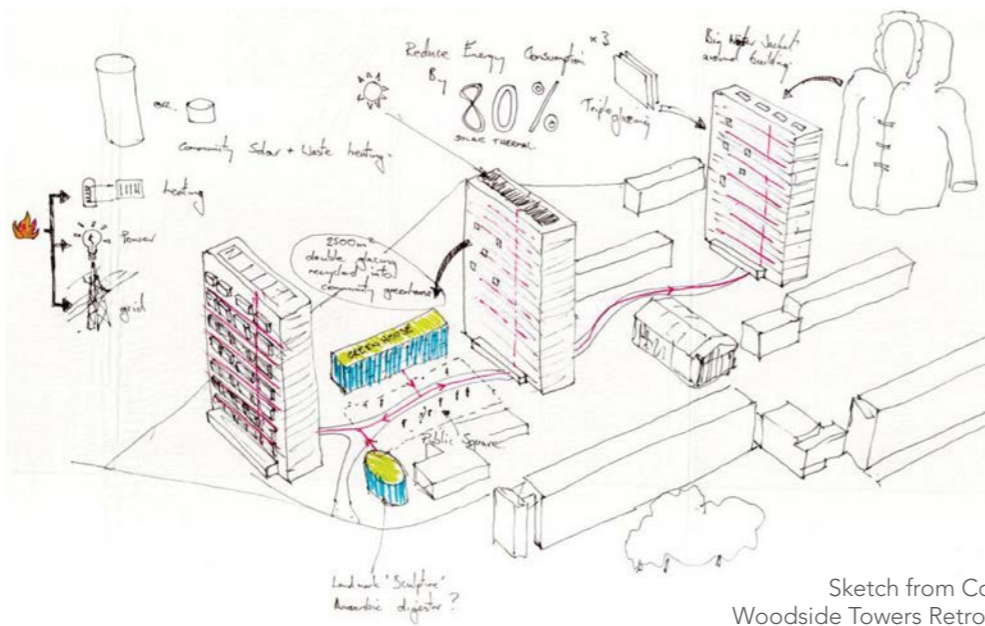


Call ITS on 0131 242 8181 and quote reference 23-8665 - Cables Wynd & Linksvie

## PROJECT AIMS

The City of Edinburgh Council is proposing upgrades to both Cables Wynd House and Linksvie House through a full energy retrofit, as well as improvements to common areas, foyer entrances and stairwells etc, to a new-build standard as well as upgrades to other common parts such as communal fire doors and screens. Alongside works to each block it is also proposed to improve the surrounding areas through a place-making approach.

Rather than tackle these items individually it is proposed to look at each block as a whole through a combined approach to energy, comfort, health and safety, and place-making.



Sketch from Collective Architecture's Woodside Towers Retrofit project in Glasgow.

### Energy

Cables Wynd House and Linksvie House were both built in the 1960s and compared to modern standards are inefficient and require a lot of energy to run. The Council is proposing to upgrade the energy performance of both blocks through a whole block retrofit approach.

### Comfort

By upgrading the energy performance of each building the internal comfort for residents will be improved, providing homes which are warm and require less energy to heat, as well as having better ventilation to improve the indoor air-quality.

### Health & Safety

Warmer homes which have good levels of ventilation have positive effects on those living within them. A whole block approach and improvements to the public realm will also create spaces which people want to be in and feel safe moving around.

### Place-making

This provides opportunities to improve the experience of everyone moving through or around the blocks. As well as contributing to the feeling of safety it could also provide spaces for gathering, growing and enjoying.

## RESIDENT ENGAGEMENT

The project team in collaboration with the Cables Wynd Resident's Group have hosted two drop-in project introductions for residents to meet the team and learn about the project aims and approach. These were held on Thursday 9th February and Wednesday 26th April.

### Share (Y)our Story – Tell us About Cables Wynd House / Linksvie House

Following the project introduction sessions, we'd like to invite you to tell us about living in Cables Wynd House and Linksvie House. We'd like to understand your experiences and your views on the local area, the building you live in, and your individual home. Please come along to one of the following events to join the discussion, meet the project team and share (y)our story.

We will bring a large-scale model of the area, display boards, tea and biscuits, and some feedback forms to record your thoughts. We look forward to seeing you at one of the following events.

### RESIDENT AND STAKEHOLDER EVENTS

St. Mary's Star of the Sea Church Hall	Thursday 18 <sup>th</sup> May	3pm - 7pm
Leith Community Centre Cafe Space	Thursday 25 <sup>th</sup> May	3pm - 7pm
Cables Wynd House - main entrance	Wednesday 24 <sup>th</sup> May	2pm - 4pm
Linksvie House - main entrance	Friday 26 <sup>th</sup> May	2pm - 4pm

Your participation and feedback will help the project team to understand the challenges these two buildings present, and identify opportunities for improvement. Following these initial events, the team will develop a number of proposals which we'll share with you and ask you to share your thoughts on. This engagement and consultation will take place throughout the Summer.