



Project Newsletter



Construction Update

Newhaven to Melrose Drive including Lindsay Road
Drainage and ducting works are continuing along this section with both contractors operational in this area. Our contractor Morrisons Utility Services (MUS) continues with diverting utilities. Our main infrastructure & systems contractor, SFN's, site clearance works up to the existing wall at Lindsay Road is now complete. This allows the process of lowering Lindsay Road so that the new tram route and road interface can be linked including the new link road down to Melrose Drive. This phase will also see the completion of the retaining wall, an infill section towards the flats and an extension of the wall to the east.

Ocean Terminal

We are progressing with both inbound and outbound track installation in this area.

Constitution Place to Baltic Street

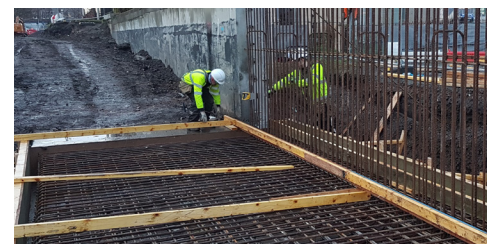
The main infrastructure works are progressing well in this area. Works to date include drainage, ducting and track laying. The first track slab installation has taken place over the past two weeks and following the completion of these track works, Tower Street to Constitution Place is scheduled to re-open for traffic in January 2021 which will allow the project to begin construction on sections of Ocean Drive.

Baltic Street to Queen Charlotte Street

SFN continue with the installation of drainage and ducting in preparation for track work.

Coatfield Lane to Laurie Street

We have finished the excavation of the graveyard remains in front of the wall at South Leith Parish Church with a total of 359 human remains found in this area. This is only the end of the first phase with work now moving onto analysis and better understanding of the findings.



Newhaven to Melrose Drive



Constitution Place to Baltic Street



Dalmeny Street to Pilrig Street



Delivery of rail to Leith Walk

Archaeology Vlog

It is vlog number 20! This week, John and Amanda look at an unusual burial that may be our last at the South Leith Parish Church graveyard.



Christmas Break

We are currently preparing to close all of our work sites for the Christmas break. More information on this closure will be available soon, make sure to check our social media for updates.

Next Work Sections

We will begin works on Ocean Drive in the New Year. Further details on this will be available in due course.

More Updates



Laurie Street to FOTW

Works are progressing well in this section with investigation and clearance work ongoing, in preparation for the installation of drainage and duct banks.

To accommodate these works we have made some temporary changes to footpaths in this area. Pedestrian access to businesses will be maintained at all times.

Leith Walk

Both our contractors, SFN and MUS are working on Leith Walk. MUS are undertaking excavations and diverting utility services. SFN are undertaking the infrastructure works which currently consists of drainage, ducting and trackslab.

Crown Street to Dalmeny Street

We are undertaking a diversion of a 500mm diameter gas main at Jane Street. This a complex diversion due to the constrained space and working carefully around a number of other utilities. The fence lines have been altered at Jane Street to accommodate the works.

Dalmeny to Pilrig Street

Main infrastructure works are progressing well with the installation of drainage and ducting. In order to facilitate the above works, there will be times when adjustments need to be made to the fence lines, reducing the space available to pedestrian and cyclists. We hope to progress these works as quickly as possible to minimise disruption. Signage will be installed locally to advise pedestrians and cyclists of a temporary route.

Track laying is also progressing well in this area, with the first of the rails being delivered to site this week Our aim is for the first tracks to be laid in this area before the end of the year.

Pilrig to McDonald Road

Excavation works and trial holes are continuing in this section. This section requires extra attention as we cross the historic Network Rail bridge and remove old tram infrastructure at Shrubhill.

McDonald Road to Annandale Street

Installation of drainage and ducting works are continuing with track preparation works to commence prior to the Christmas break.

Annandale Street to London Road

Excavation of the tram clearance zone has been ongoing between Annandale and London Road following the utility diversions in preparation for the commencement of main tram infrastructure works. Backfilling works are also taking place in this area.

Community Benefits



The Trams to Newhaven project is committed to maximising the social, economic and environmental benefits through the delivery of the project.

We are keen to work in partnership with local schools in the area and this #Christmas we invited local school pupils to help us spread some festive cheer! We challenged Leith school children to make festive posters themed around trams or construction, that we will then display in an area's onsite in close proximity to each of the schools that took part. We are overwhelmed with what we have received to date!

Thank you to all schools who got involved – we can't wait to display their artwork and showcase their amazing work over the Christmas period.

Walking & Cycling Spaces

As our works progress, on occasion we will be required to temporarily adjust sections of our site perimeter which will reduce the available space for pedestrians and cyclists. Signage will be installed in the local area to inform pedestrians and cyclists about diversions and the recommended route and we will aim to progress works in these areas as quickly as possible to ensure that minimal disruption is caused. Notification of these works will be communicated via the project's communication channels as far in advance as possible.

Additional Traffic & Pedestrian Updates

Jane Street Industrial Estate Temporary Road Closure

We are carrying out utility diversion works on Jane Street in the industrial estate. These works started on Monday 23 November and will take approximately 6 weeks. Localised diversion and parking restrictions are in place with access to businesses being maintained at all times. An update on these works will be provided prior to the Christmas break.

Jane Street

Fence Line Adjustments on Footpath and Cycle Way

There have been minor adjustments to the fence line on Leith Walk at Jane Street from Monday 16 November for 6 weeks. This is to accommodate utility works within the footpath.

Itison Vouchers Return for Christmas



Our popular itison £10 for £5 voucher scheme returns this Christmas.

These half price vouchers allow purchasers to spend in a range of participating venues in Leith Walk and Constitution Street as part of our support for business package.

With over 80 small businesses taking part in the scheme, it is a great way to support local retailers this Christmas. Vouchers are available to buy on the Itison website now.

In addition, any vouchers purchased for the Constitution Street scheme which were due to expire 30 November 2020 have now been extended to 31 March 2021.

Contact Us

 newhaven.tram@edinburgh.gov.uk

 0131 322 1122

 @tramstonewhaven

 @TramstoNewhaven



Small Business Spotlight

Find out more about **Cafe Bellina**.

Tell us a bit about your business
Cafe Bellina was set up by three friends with a passion for cooking and baking. The inspiration behind the name comes from a beautiful dog of ours called 'Bella' and sometimes 'Bellina'. It means 'little beautiful' in Italian.

We believe in serving good quality Italian produce without the massive price tag. We use only the freshest ingredients for a combination of the best Scottish and Italian products. A combination of tradition and cultures for breakfast, brunch and lunch. Our coffee (Cafe Kimbo) is one of the best coffee brands in Italy and we are sure you will love it! We are constantly adding new specialities to our menu as we want people to try something different.

Our mission is to make people feel at home when they enter Cafe Bellina as it's like home for us.

Read the whole article on our website.