



Trams to Newhaven

Project Newsletter



Christmas Shut Down

The Trams to Newhaven project construction will shut down from 5pm on 18 December 2020 until 7am on Monday 4 January 2021. Both contractors will return to work on Monday 4 to review all safety measures ahead of recommencing construction activities on Tuesday 5 January 2021.

All open excavations will be backfilled for health and safety purposes and to protect assets. During the period of site shutdown, the entry and exit gates will be secured using a coded padlock. All emergency services have been given the code should they need to gain access.

Traffic management maintenance crews will be operational 24/7 over the Christmas period. The site will be inspected twice a day.

Over the festive period our contact centre hours will be as follows:

- 19, 20, 21, 22, 23 December 8am - 8pm
- 24 December 8am - 6pm
- 27, 28, 29, 30 December 8am - 8pm
- 25 and 26 December closed
- 31 December 8am - 6pm
- 1 and 2 January closed
- 3 and 4 January 8am - 8pm

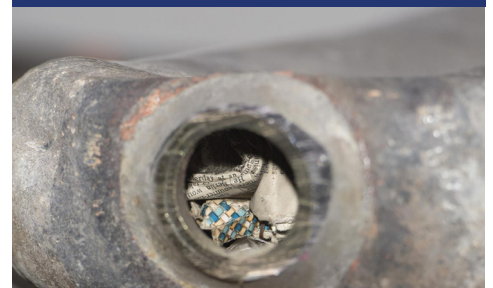
In the event of an emergency out with our operational hours please call our number on 0131 322 1122 where your call will be diverted to our out of hours contact.

The operating times for the Logistics Hubs over the period are:

- 21, 22, 23 December 8am - 6pm
- 24 December 8am - 3pm
- 25, 26 and 27 December closed
- 28, 29, 30 December 8am - 6pm
- 31 December 8am - 3pm
- 1, 2 and 3 January closed
- 4 January 8am - 3pm



Track installed at Ocean Terminal



Time capsule found early this year



Logistic Hubs festive hours

Christmas Donations

Our contractors SFN and sub-contractor Siemens have worked closely with the City of Edinburgh Council's Housing team to donate £3,000 worth of food boxes to Leith Gives which is helping tackle food poverty, social isolation and digital exclusion for vulnerable families in the area.

Project partners also made food and toy donations to Shore Avocado, who are collecting food-bank donations in support of the wonderful community work that Hibernian Football Club Girls Academy are doing to help Leith Food Bank.

The project has also given £5,000 to Leith Chooses.

Our final donations went to Streetwork at Simon Community Scotland. Our project team donated items such as toiletries, essential pieces of warm clothing and food donations in support of the work that this organisation does to support some of the most vulnerable in our communities.

Contact Centre 2021

From Monday 11 January the new opening hours for the contact centre will be Monday to Friday 8am to 7pm and Saturday 8am to 2pm. Our email, Twitter and Instagram accounts will be monitored Monday to Friday 9am to 5pm.

Progress Over 2020



Looking back on 2020, life has been very challenging for everyone with the project suffered a three month shutdown in March 2020. However, on recommencing the team got straight to it with continued progress made across all sites.

Milestone Achieved at Ocean Terminal

In November we reached an exciting milestone at Ocean Terminal with the first tram track on the route being installed.

Newhaven to Melrose Drive

Works commenced on this section in March. Since then the section has been handed over from our Swept Path Contractor, MUS, who completed excavation and utility clearance to our Infrastructure & Systems Contractor, SFN, who will undertake the main tram infrastructure works including Lindsay Road retaining wall and the lowering of Lindsay Road.

Constitution Street

The Robert Burns Statue at the Baltic Street Junction was removed ahead of construction starting. The removal unearthed a 122 year-old time capsule including newspapers, coins of all denominations from the time, a pamphlet including information on crimes investigated in Leith in 1897, and a small leaflet containing rules and the constitution of the Edinburgh Burns Group. The statue is currently undergoing careful restoration ahead of reinstatement next year.

The South Leith Parish Church wall and memorials were removed to allow essential groundworks to take place. Specialist members of the project team used the same kind of tools and working practices to separate the individual stones as those the original masons would have used to build the wall. The excavations next to South Leith Parish Church graveyard have now been completed. The new total for the human remains uncovered is 359. This will provide a key insight into the past lives of Leith once they are taken for forensic analysis.

The most complex utility diversions on the route were completed at the Baltic Street Junction. Inbound and outbound rail has been installed between Constitution Place and Baltic Street

Leith Walk

Enabling works were completed in the early part of the year with the creation of the city-bound running lane ahead of the main construction. Main construction works began on 22 June. This saw the establishment of the construction site from London Road to Crown Place. To date 60% of Leith Walk has been handed over from MUS, who completed excavation and utility clearance to SFN who will undertake the main tram infrastructure works and public realm. The first installation of rail on Leith Walk has taken place within the Pilrig Street to Dalmeny Street section

Community Benefits



We were delighted to run our #FestiveCheer campaign with help from Pilrig Park, St Mary's R.C. Primary School, Leith Primary School, Victoria Primary School and Broughton Primary School. We wanted to say a special thank you to all the teachers, support staff and pupils for getting involved and organised a surprise for each of the schools that registered with our community benefit initiative.

SFN went to work to create a spectacular mobile sleigh that would be fit to lift everyone's spirits as we come to a close on 2020!

On Thursday 10 and Friday 11 December, our teams set off with our spectacular sleigh and went dashing through the streets of Leith parking up in each of the school's playgrounds. Over 1500 selection boxes were distributed between the schools involved, all donated from the project's partners SFN, Turner & Townsend and MUS. Also contributing to our Christmas schools' campaign were subcontractors, Siemens, Class One, Beatties FRC Ltd and supplier Jarvie Plant.

Small Business Spotlight

Find out more about **Harburn Hobbies**.

Tell us a bit about your business

Harburn Hobbies was started just before WW2 and was at 122/4 Leith Walk with a 'boys' toyshop and a separate 'girls' toyshop. Harburns is a family business and in the same family since 1966. In 1978 Harburn's moved to 67 Elm Row at the top of the walk.

Harburn's evolved over the years to being a specialist model shop, mainly catering for men of a certain age, older men who were looking for an all engrossing hobby (like model railways) to keep them occupied during retirement.

Read the whole article on our website.

Additional Traffic & Pedestrian Updates

Jane Street Industrial Estate - Temporary Road Closure
Jane Street will remain closed over the Christmas period and all excavations will be backfilled.

Jane Street and Arthur Street - Fence Line Adjustments on Footpath and Cycle Way

The minor adjustments to the fence line on Leith Walk at Jane Street will be temporary reinstated for the Christmas period and will be adjusted again in January to accommodate utility works on the footpath.

Tower Street

Tower Street to Constitution Place will re-open for traffic in January 2021. However, all works will not be completed in this area and the project will return to complete footpath overhead line equipment, street lighting and landscaping. Please note there will be a requirement to close Tower Street again in 2021 to complete utility diversion works.

Next Phase of Works



The next phase of construction works will commence on Ocean Drive (Rennie's Isle to Ocean Terminal). Site set up will begin on the weekend of 2 January 2021 with traffic management arrangements in place from Monday 4 January 2021. Construction works are scheduled to be completed by Autumn 2021.

The project will also begin works on the area outside Stevedore Place on 18 January 2021. This work will include clearance of utilities and the laying of track, ducting and drainage. Thereafter, works will continue in the remaining sections. The programme is as follows:

January 2021 - Summer 2021

Area outside Stevedore Place - clearance of utilities and laying of track, ducting and drainage.

Summer 2021 - Autumn 2021

Existing roadway - clearance of utilities and laying of track, ducting and drainage.

Autumn 2021 - Winter 2021/22

Roadway from the roundabout to the casino and port area - completion of new roadway

Discussions around the trees on Stevedore Place will continue with representatives from the local community ahead of construction starting in Summer 2021.

Merry Christmas!



On behalf of the Trams to Newhaven team we thank you for your patience over the past year and we wish you all a Merry Christmas and a Happy New Year!

Contact Us

 newhaven.tram@edinburgh.gov.uk

 0131 322 1122

 @tramstonewhaven

 @TramstoNewhaven

Continuing Works

When we return in 2021 we will be continuing with our works at:

Newhaven to Melrose Drive including Lindsay Road

Infrastructure works will continue including Lindsay Road Retaining Wall and the lowering of Lindsay Road so that the new tram route and road interface can be linked including the new link road down to Melrose Drive.

Ocean Terminal

Track installation will continue followed by the commencement of the tram stop construction and public realm works.

Queen Charlotte Street to Constitution Place

Track installation will commence between Queen Charlotte Street and Baltic Street. This section is scheduled to be completed in Spring 2021 with the exception of the Robert Burns statue reinstatement and utility works at the Baltic Street junction.

Foot of the Walk to Coatfield Lane

The South Leith Parish Wall will be reconstructed in early 2021. SFN will commence the main tram infrastructure works.

Leith Walk

Work will continue on Leith Walk to install drainage and ducting followed by starting the main tram infrastructure. The public realm works will commence which will see the reinstatement of the London Road roundabout clock and bronze pigeons at Elm Row.