

BBA APPROVED INSTALLER 8594
High Friction Surface Installer

LANTRA AWARDS!
APPROVED

UAVB Verified
ngs ISO 9001 Registered Quality Management

TMCA
TRAFFIC MANAGEMENT CONTRACTORS ASSOCIATION

ALL CLASS ONE OPERATIVES ENGAGED IN TEMPORARY TRAFFIC MANAGEMENT OPERATIONS ARE LANTRA APPROVED AND ACCREDITED TO SECTOR SCHEME 12

CHAPTER 8 T.S.M DETAILS

DETAIL A
Pedestrian crossing with signalised crossing
Note: 1. Signalised crossing with signalised crossing
2. Pedestrian crossing with signalised crossing
3. Pedestrian crossing with signalised crossing
4. Pedestrian crossing with signalised crossing
5. Pedestrian crossing with signalised crossing
6. Pedestrian crossing with signalised crossing
7. Pedestrian crossing with signalised crossing
8. Pedestrian crossing with signalised crossing
9. Pedestrian crossing with signalised crossing
10. Pedestrian crossing with signalised crossing
11. Pedestrian crossing with signalised crossing
12. Pedestrian crossing with signalised crossing
13. Pedestrian crossing with signalised crossing
14. Pedestrian crossing with signalised crossing
15. Pedestrian crossing with signalised crossing
16. Pedestrian crossing with signalised crossing
17. Pedestrian crossing with signalised crossing
18. Pedestrian crossing with signalised crossing
19. Pedestrian crossing with signalised crossing
20. Pedestrian crossing with signalised crossing
21. Pedestrian crossing with signalised crossing
22. Pedestrian crossing with signalised crossing
23. Pedestrian crossing with signalised crossing
24. Pedestrian crossing with signalised crossing
25. Pedestrian crossing with signalised crossing
26. Pedestrian crossing with signalised crossing
27. Pedestrian crossing with signalised crossing
28. Pedestrian crossing with signalised crossing
29. Pedestrian crossing with signalised crossing
30. Pedestrian crossing with signalised crossing
31. Pedestrian crossing with signalised crossing
32. Pedestrian crossing with signalised crossing
33. Pedestrian crossing with signalised crossing
34. Pedestrian crossing with signalised crossing
35. Pedestrian crossing with signalised crossing
36. Pedestrian crossing with signalised crossing
37. Pedestrian crossing with signalised crossing
38. Pedestrian crossing with signalised crossing
39. Pedestrian crossing with signalised crossing
40. Pedestrian crossing with signalised crossing
41. Pedestrian crossing with signalised crossing
42. Pedestrian crossing with signalised crossing
43. Pedestrian crossing with signalised crossing
44. Pedestrian crossing with signalised crossing
45. Pedestrian crossing with signalised crossing
46. Pedestrian crossing with signalised crossing
47. Pedestrian crossing with signalised crossing
48. Pedestrian crossing with signalised crossing
49. Pedestrian crossing with signalised crossing
50. Pedestrian crossing with signalised crossing
51. Pedestrian crossing with signalised crossing
52. Pedestrian crossing with signalised crossing
53. Pedestrian crossing with signalised crossing
54. Pedestrian crossing with signalised crossing
55. Pedestrian crossing with signalised crossing
56. Pedestrian crossing with signalised crossing
57. Pedestrian crossing with signalised crossing
58. Pedestrian crossing with signalised crossing
59. Pedestrian crossing with signalised crossing
60. Pedestrian crossing with signalised crossing
61. Pedestrian crossing with signalised crossing
62. Pedestrian crossing with signalised crossing
63. Pedestrian crossing with signalised crossing
64. Pedestrian crossing with signalised crossing
65. Pedestrian crossing with signalised crossing
66. Pedestrian crossing with signalised crossing
67. Pedestrian crossing with signalised crossing
68. Pedestrian crossing with signalised crossing
69. Pedestrian crossing with signalised crossing
70. Pedestrian crossing with signalised crossing
71. Pedestrian crossing with signalised crossing
72. Pedestrian crossing with signalised crossing
73. Pedestrian crossing with signalised crossing
74. Pedestrian crossing with signalised crossing
75. Pedestrian crossing with signalised crossing
76. Pedestrian crossing with signalised crossing
77. Pedestrian crossing with signalised crossing
78. Pedestrian crossing with signalised crossing
79. Pedestrian crossing with signalised crossing
80. Pedestrian crossing with signalised crossing
81. Pedestrian crossing with signalised crossing
82. Pedestrian crossing with signalised crossing
83. Pedestrian crossing with signalised crossing
84. Pedestrian crossing with signalised crossing
85. Pedestrian crossing with signalised crossing
86. Pedestrian crossing with signalised crossing
87. Pedestrian crossing with signalised crossing
88. Pedestrian crossing with signalised crossing
89. Pedestrian crossing with signalised crossing
90. Pedestrian crossing with signalised crossing
91. Pedestrian crossing with signalised crossing
92. Pedestrian crossing with signalised crossing
93. Pedestrian crossing with signalised crossing
94. Pedestrian crossing with signalised crossing
95. Pedestrian crossing with signalised crossing
96. Pedestrian crossing with signalised crossing
97. Pedestrian crossing with signalised crossing
98. Pedestrian crossing with signalised crossing
99. Pedestrian crossing with signalised crossing
100. Pedestrian crossing with signalised crossing

DRAWING DETAILS

- SIGN
- CONES OR MASS BARRIER
- DIRECTION OF TRAFFIC
- PEDESTRIAN SIGNALISED CROSSING
- UNCONTROLLED PEDESTRIAN CROSSING
- TRAFFIC LIGHT HEAD
- PEDESTRIAN LIGHT HEAD
- TRAFFIC LIGHT HEAD BASE AND DIRECTION
- PEDESTRIAN LIGHT HEAD BASE AND DIRECTION
- A1
- A2
- A3

NOTES :

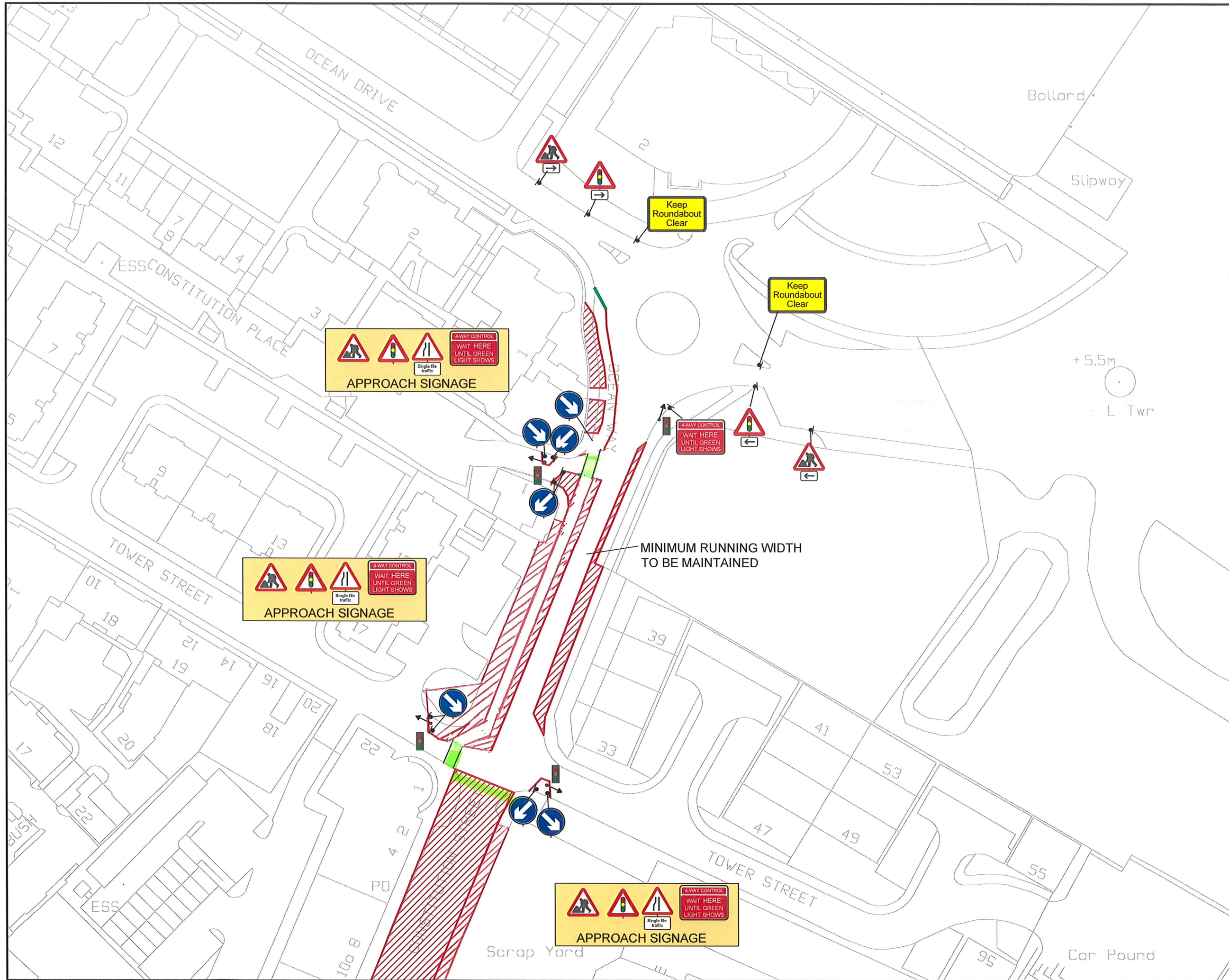
DRAWING STATUS : FOR REVIEW

Rev	Date	Revision	Rev By	App By
0	26-08-19	ORIGINAL SKETCH	JW	SP
A	18-02-21	Alteration to worksite - Shuttle Working	SP	SP
B	19-02-21	Alteration to worksite - SFN comments	SP	SP

SFN
Sacyr · Ferraris · Neopol

www.classone.org
mail@classone.org

Drawn By : JW Checked By : SP
Scale : N.T.S Date : 26/08/19
Main Contractor : SFN
Location : CH + 15764.35 After Duke Street - CH + 16605.35 Constitution Street
Traffic Management Arrangement : FOW to Constitution Place Phase 1 Works Area with Temporary Traffic Signage
Drawing No : EYTN-CL1-6XX-07-SK-X-0003
Revision : A B C D E F G H I J K L M N O P Q R S T U V W X Y Z AA AB AC AD AE AF AG AH AI AJ AK AL AM AN AO



ALL CLASS ONE OPERATIVES ENGAGED IN TEMPORARY TRAFFIC MANAGEMENT OPERATIONS ARE LANTRA APPROVED AND ACCREDITED TO SECTOR SCHEME 12

ALL TRAFFIC MANAGEMENT TO COMPLY WITH CHAPTER 8 OF THE T.S.M. ALL SIGNS TO COMPLY WITH THE DETAILS OF THE T.S.R.G.D. 2016

KEY

- Traffic Cones
- Pedestrian barrier
- Access Gate
- Mass Barrier
- Area of work
- Direction of Traffic Sign
- Traffic light Head
- Traffic signal head
- Pedestrian head
- Traffic signal head base for pedestrian crossing
- Pedestrian head base



Rev	Date	Revision	Rev by	Chkd by

Class One Traffic Management Ltd.
 Class One House
 Seabegs Road,
 Bonnybridge,
 FK4 2AQ
 Tel: 01324 810222
 Fax: 01324 810444
 www.classone.org
 mail@classone.org

Drawn By : CC	Checked By : SS
Scale : N.T.S	Date : 14/04/2021
MAIN CONTRACTOR: MUS	LOCATION: TOWER STREET, EDINBURGH
TRAFFIC MANAGEMENT: 4 WAY SIGNALS	
Drawing No : 18139 TM003	
Revision : F	Original Drawing Size 841x594 (A1)