



# Trams to Newhaven

## Project Newsletter



## Construction Updates

### Newhaven to Melrose Drive including Lindsay Road

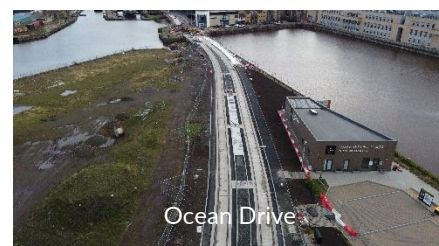
Drainage and ducting works have started with track works continuing within this section. Works have commenced to upgrade the Cruise Terminal area which allows tie into the new tram infrastructure in the area. Pedestrian access is maintained.



Newhaven to Melrose Drive

### Ocean Terminal

Hard landscaping, surfacing, public realm works, including the construction of the Ocean Terminal tram stop continue. Traffic has moved to the west carriageway at Ocean Terminal with a footway closure on the east side of Ocean Drive. Pedestrian and cyclist access is maintained to Ocean Terminal, with wayfinding signage in place throughout the area. Vehicle access is managed and maintained to CALA Developments, Ocean Terminal Blue Car Park and the Ocean Point One building via a 3-way temporary traffic management arrangement.



Ocean Drive

Reinstatement works to the existing footways on the west side of Ocean Terminal are progressing well. This involves pedestrian footways moving away from the building line of Ocean Terminal. Access for pedestrians and cyclists remain in place with wayfinding installed. Cycle racks remain in place.

Further hard landscaping has commenced on the existing footways along the building line of the red car park entrance area. This includes realignment works to the entrance of the red car park.

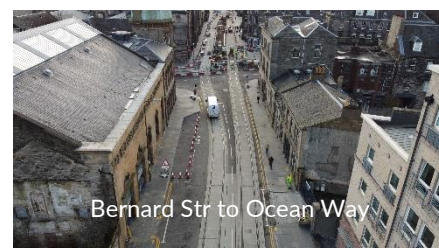


McDonald Rd to Annandale Str

### Ocean Terminal to Rennie's Isle

Works are progressing well heading east bound on Ocean Drive with track installation nearing completion on the Victoria Bridge with the approach footpaths under construction. This includes landscaping works in the area which are continuing towards Cala.

The Victoria Bridge remains closed and is expected to re-open week commencing 13 December 2021.



Bernard Str to Ocean Way

# More Construction Updates



## **Ocean Way to Stevedore Place**

Phase two of construction works are progressing on the south side of Ocean Way. The main infrastructure contractor, SFN, are continuing with drainage and ducting on the east side. On completion of these works, track works will commence.

Overhead line equipment (OLE) works to the southwest side on the footway have commenced and are ongoing. The footway will remain closed to facilitate these works.

## **Constitution Place to Baltic Street**

Landscaping works continue on the east from Genting Casino corner to Tower Street and are scheduled to be completed in early February 2022.

Tower Street attenuation pipe enabling works have commenced which will support surface water drainage in the area. The site was extended further west on the south side of the carriageway. Following the enabling works, the installation of the attenuation pipes will commence which will see the site extended further to include the north side of the carriageway. Updates on these works will be forthcoming in the following weeks.

Please note parking remains suspended on Tower Street to accommodate these works

## **Baltic Street to Queen Charlotte Street**

We have commenced works on Bernard Street for the installation of the attenuation pipes for approximately 16 weeks. The work site has extended west on Bernard Street which required the closure of Maritime Street at the junction of Bernard Street including parking restrictions on Maritime Street at this location, movement of the pedestrian crossing on the west side and slight adjustments to the traffic flow around the area.

There have been changes to the working method due to underground conditions. The temporary works to protect utility assets with temporary supports by the use of sheet piles will now be completed in sections with the first section now expected to take place from 15<sup>th</sup> December for approximately 2 days. This will then follow with the installation of the pipes within the section and once installed the sheet piles will be removed and the process will commence again for the next section. Noise and vibration will be monitored to ensure that the works are within the limits stipulate within the Code of Construction Practice.

Track laying across the Bernard / Baltic Street junction is complete with landscaping works ongoing. Work for the construction of the tram stop is ongoing between Bernard / Baltic Street and Maritime Lane. The footway works off the Baltic Street junction on the east side of Constitution Street are ongoing and are expected to be complete January 2022.

On Tuesday 7 December footway works will take place outside Bishops Newsagents towards the temporary pedestrian crossing on Bernard Street junction. Pedestrian access to businesses will be maintained with localised diversions.

From Friday 10 December specialist concrete works will be undertaken between Maritime Lane and Queen Charlotte Street during the project's standard working hours. These works are expected to be noisy as we will be using specialist equipment. All efforts will be made to minimise disruption and inconvenience to residents and businesses. These will include debris, noise and vibration mitigation measures such as acoustic shielding, and a working tent to enclose and isolate the work zone. Pedestrian access will be maintained in the area for the duration of these works. These works are expected to take approximately 7 to 10 working days. On completion, fence lines are expected to be removed, opening up the area to pedestrians only.

The loading area on Mitchell Street remains for local businesses and residents to facilitate any delivery requirements. Our Logistic Officers at the Foot of the Walk Logistic Hub will be able to help

### **Queen Charlotte Street / Coatfield Lane to Foot of the Walk (FoTW)**

Works continue from Coatfield Lane to FoTW with excavation works underway to progress outbound track installation and complete the drainage and ducting. Localised pedestrian access will be maintained.

The final section of the South Leith Parish wall has commenced which will complete the structure at the graveyard. Track works continue to progress between Coatfield Lane and the Foot of the Walk with the completion of wall works at the new Kirkgate.

From Monday 6 December the site boundaries and access road at Laurie Street will move south to progress tram infrastructure works. These works will take approximately three weeks to complete. Parking restrictions associated with the project's TTRO will be implemented. The pedestrian walkway at FoTW has been relocated approximately 20 metres north bound to accommodate further track works.

External building surveys for OLE fixings will commence from week commencing 6 December 2021. In order to conduct these surveys, there is a requirement to operate on footways across the route with the use of working at height access equipment. Pedestrian diversions will be in place.

### **Leith Walk**

Works are continuing on the west side of Leith Walk and a programme for the commencement of the footway works on the east side is being further developed. This will be communicated via the project's communication channels.

### **FoTW to Crown Street**

From Monday 8 November there has been an extension to our site lines from Jane Street to Kirk Street. This was to accommodate utility clearance and tram infrastructure works and utility works.

To accommodate this new section of works the logistics hub at FoTW has been relocated to the west side of Leith Walk between Jane Street and Steads Place. Our Logistic Officers at the hub are available to assist businesses in the area. Additionally, the waiting area will also be relocated between Jane Street and Steads Place to accommodate the works.



### **Crown Street to Jane Street**

Track works on both inbound and outbound are now complete. Drainage and landscaping works in the area are progressing on the west side of Leith Walk.

### **Jane Street to Balfour Street**

Main infrastructure and landscaping works are progressing well throughout this section. The fence line will extend west on Arthur Street to accommodate hard landscaping works in the coming week. Works are expected to be complete prior to the project's Christmas shutdown period. Pedestrian access to businesses will be maintained. The hard landscaping works at Balfour Street have commenced and are progressing well.

### **Dalmeny Street to Pilrig Street including Pilrig Street Junction**

Main infrastructure and landscaping works are progressing. Track works are progressing across the junction following completion of ducting and drainage installations. Works on the new footpath on the north side of Pilrig junction have commenced to accommodate landscaping works.

### **Pilrig Street to McDonald Road**

On Wednesday 8 December fence lines are expected to be extended for hard landscaping works on the west side of Leith Walk between Pilrig Street and Middlefield. These arrangements are expected to be in place until February 22. Pedestrian access will be maintained. Works are progressing either side of the historic rail bridge. Track works have now commenced in this area.

### **McDonald Road to Annandale Street**

Traffic has now flipped over to the west side of Leith Walk in this section with works on the footways on the east side ongoing.

### **Elm Row**


The installation of the attenuation drainage system is now complete as part of the first phase of works at Elm Row. Further drainage works will commence at Montgomery Street.

### **London Road to York Place**

Morrison Utility Services (MUS) continue ground excavation works with the clearance of any utility services and archaeological works. A temporary pedestrian crossing has been installed through the site across from the Playhouse Theatre. This may have to move at times whilst works progress.

## Contact Us

 [newhaven.tram@edinburgh.gov.uk](mailto:newhaven.tram@edinburgh.gov.uk)

 0131 322 1122

 @tramstonewhaven

 @TramstoNewhaven

Download our more detailed newsletter:

