



Trams to Newhaven

Project Newsletter



Construction Updates

We would like to wish everyone a very Happy New Year.

Works restarted after the Christmas shutdown period on 10 January 2022 on all live sections across the route and over the course of the next 4 – 6 weeks work in other sections will begin. Further details of the full programme are available on the project website.

The project remains on schedule to be operational by Spring 2023, with all construction completed by the end of 2022 followed by a period of testing and commissioning.

Newhaven to Melrose Drive

Main Infrastructure works are ongoing and progressing well within this area.

Parking restrictions are in place on Lindsay Road to enable north lane carriageway and associated tram works to commence. A notification was distributed in the area prior to the project's Christmas shutdown period and these works are expected to last 4 to 6 weeks.

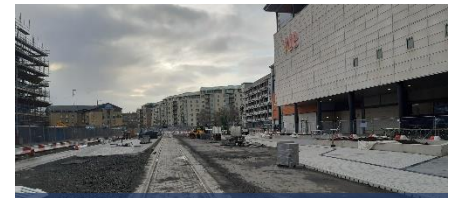
Track installation is continuing and progressing well within the Melrose Drive section of works.

Works have started on the upgrading of the Cruise Terminal area. Pedestrian access is maintained at this location.

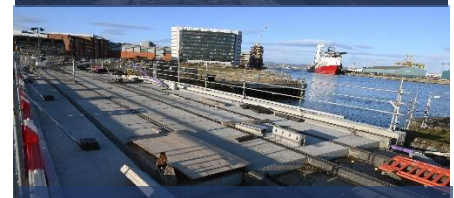
In the coming weeks construction will commence from the south roundabout on Ocean Drive to Melrose Drive. Further updates will follow with direct notifications being distributed to local affected parties and details updated on the project's digital platforms.

Ocean Terminal

Works are progressing well within the area, with the majority of the new foot ways now complete on the west. The works on the eastern carriage way will continue to move southwards towards the Holiday Inn. These works are scheduled to be completed by Spring 2022.



Ocean Terminal



Rennie's Isle



Constitution Street



Leith Walk

Ocean Terminal to Rennie's Isle

Victoria Bridge is open to pedestrians and this section is due to be complete in February 2022.

Rennie's Isle to Tower Place

Construction works will start from Rennie's Isle to Tower Place at the end of February 2022 with notification to local residents taking place ahead of the site establishment. On the commencement of these works, Tower Bridge will be closed to pedestrians to allow structural works to be undertaken. These works are scheduled to be complete in Summer 2022.

Ahead of this section of works starting, Overhead Line Equipment (OLE) foundation works are expected to commence in the coming weeks on the north side of Ocean Drive.

Stevedore Place

Drainage and ducting are nearing completion towards the Constitution Place end of the street with track installation commencing from the west side. On completion of these works, there will be a third phase required to allow track construction, tram stop works, landscaping, and reinstating the west entrance to Stevedore Place. Detail of these works will be communicated in due course.

Constitution Place to Baltic Street

Landscaping works on the east from Genting Casino corner to Tower Street are scheduled to be completed in Spring 2022.

Leith Dock pillars will be reinstated at Constitution Place from January 2022.

Enabling works for the attenuation pipes on Tower Street were completed in December and works have commenced on the pipe installation. The site was extended early January to complete these works with local access arrangements in place.

Baltic Street to Queen Charlotte Street

Tram stop works will continue and are scheduled to be completed by the start of February 2022. Attenuation works are continuing at Bernard Street. Temporary works to support and protect utility assets using sheet piles are expected to recommence early next week. On completion of attenuation works, further public realm works will be completed at the Baltic / Bernard Street junction.

Hydro demolition works were completed between Queen Charlotte Street and Mitchell Street before the Christmas break. We would like to thank residents and businesses for their patience during these works.

Queen Charlotte Street to Coatfield Lane

We will be starting works from Coatfield Lane to Queen Charlotte Street on 24 January 2022. Site establishment will take place on the weekend of 22 and 23 January 2022.

This section will be closed both northbound and southbound between Coatfield Lane and Queen Charlotte Street. No access will be provided at these closure points for any vehicular traffic including bicycles.

Queen Charlotte Street will remain open under 2-way temporary traffic light control for east and westbound traffic for four weeks. Thereafter a full closure at the junction will be implemented.

This is required to allow the diversion of a large number of complex utilities in the vicinity. To maintain traffic flow in the area, the junction of Maritime Street at Bernard Street (by Café Marmalade) will open one way heading south once the Queen Charlotte Street junction closes. Access to and from Coatfield Lane for local access only will be via Laurie Street and Constitution Street on a 2 way temporary traffic light control for north and south bound traffic. Loading bays will be available on Queen Charlotte Street. The City of Edinburgh Council Lighting Team will be undertaking repairs on Constitution Street from Monday 17 January 2022. Temporary lighting provision has been put in place between Foot of the Walk to Coatfield Lane for this weekend.

Coatfield Lane to Foot of The Walk (FoTW)

Landscaping works on the existing footpaths on the east side of Constitution Street will also commence.

Leith Walk

In the coming weeks traffic management arrangements will flip to the west side of Leith Walk between Jane Street and Annandale Street with a new running lane created for city bound traffic. This will allow further landscaping works to take place on the east side of Leith Walk. Pedestrian access will be maintained on both the east and west side of Leith Walk.

FoTW to Crown Street

Drainage and ducting will commence from 17 January 2022 and on completion of these works, track laying will commence.

Crown Street to Jane Street

Main infrastructure works are progressing with hard landscaping works ongoing in the area.

Jane Street to Balfour Street

Main infrastructure and hard landscaping works are ongoing in the area. From w/c Monday 17 January 2022 site fence lines within this section of works will extend west at several locations from Stead's Place to Balfour Street. Pedestrian access to businesses will be maintained. Further information can be found on the Trams to Newhaven website.

Dalmeny Street to Pilrig Street

Main infrastructure and hard landscaping works are ongoing in the area.

Pilrig Street Junction

Main infrastructure and hard landscaping works are ongoing in the area.

Pilrig Street to McDonald Road

Track works are ongoing and nearing completion which will enable the commencement of hard landscaping works.

McDonald Road to Annandale Street

Hard landscaping works are ongoing on the east side of Leith Walk. ScottishPower has recently had to undertake emergency utility works in this area which resulted in a small section of the new cycleway being excavated. Re-instatement of this section by ScottishPower is ongoing.

Annandale Street to London Road

Over Saturday 15 and Sunday 16 January 2022 traffic management arrangements will be established to allow the start of works on the east side of the citybound running lane on Leith Walk from Annandale Street to London Road. Works are scheduled to start from Monday 17 January 2022 and are expected to be completed in Summer 2022.

These works will require traffic to be diverted onto the newly installed western carriageway and will include the establishment of a temporary bus stop. This change is to accommodate further landscaping works at Elm Row and associated tram infrastructure and surfacing works on the existing running lane to be undertaken. Further information and to view the new arrangements in this section can be found online.



London Road to York Place

From week commencing Monday 17 January 2022 the site will be extended from Picardy Place to York Place. This will enable the commencement of drainage and ducting followed by track works to connect up with the existing tram line. MUS will begin ground excavation with the clearance of any utility services and archaeological works. SFN will then continue with full tram infrastructure works which are scheduled to be completed by Spring 2022.

Please note the exit from Broughton Street to Picardy Place remains open. Access from Picardy Place to Broughton Street will not be allowed. This is scheduled to last 16 weeks (c. May 2022).

Diversion routes are in place for traffic levelling from London Road to Picardy Place.



Tell us a bit about your business.

Qupi café is "a little bit of Greece in Leith". We offer breakfast, brunch and lunch & you can either sit in or take away. Our café has a variety of amazing homemade pies, Greek and Mediterranean plates including a good variety of vegan and vegetarian dishes and our cakes are unique and tasty!

What makes your business unique?

Qupi is one of the oldest coffee shops on Leith walk. It was founded 18 years ago and was the first place to offer Greek food in Leith. We are also the first to offer unique homemade Greek specialities. This is a vibrant café with a warm atmosphere created by friendly staff and our lovely customers!

Describe your typical working day.

Preparing fresh food and cakes early in the morning as Qupi opens at 9 am. Serving amazing people during the day, working hard to manage the business and trying to keep Qupi a happy and nice place where people can enjoy great food and coffee with a warm atmosphere!

Why Leith?

First and foremost, we love Leith and are passionate about the place and its people. We are also proud to be part of the multicultural community of Leith.

Name three fellow Leith businesses you love to visit.

Crepissimo, Inner(city) sanctum, Edinburgh Remakery.

Contact Us

 newhaven.tram@edinburgh.gov.uk

 0131 322 1122

 @tramstonewhaven

 @TramstoNewhaven

Download our more detailed newsletter:

