



Trams to Newhaven

Project Newsletter



Construction Updates

Trams are scheduled to be operational in Leith and Newhaven by Spring 2023. To date 100% of track slab has been laid, and over 9,000 metres of communication and utility ducting has been installed. Main construction works are complete on 7 new tram stops. We've also installed 215 OLE poles, 100% of the total along the route, and have strung 2,723m of overhead cabling, 60% of the total. Over 4,300m of drainage infrastructure has also been installed.

Leith Walk and Constitution Street Itison vouchers need to be redeemed by 31 December 2022, when the promotion expires. New vouchers are still available for Constitution Street businesses. Shop local and redeem your Itison vouchers to support businesses in Leith this Christmas!

Highlights from 2022

As we approach the end of 2022, we would like to thank businesses and residents across the route for their continued patience during the construction of the Trams to Newhaven Project.

Specific highlights from 2022 include:

Newhaven to Melrose Drive

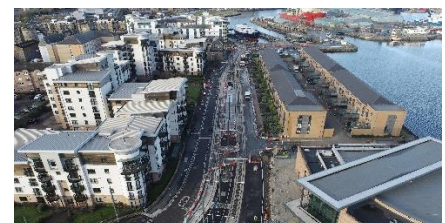
- Last track cross over installed
- Completion of welfare building
- Melrose Drive substation energised

Ocean Terminal to Rennie's Isle

- Completion of works on Victoria Bridge

Rennie's Isle to Tower Place

- In July SFN completed the largest concrete pour to date on the project, which was on the deck of Tower Bridge. This was a dual pour of 82 metres, with two concrete pumps which equates to 164 linear metres of single-track slab having been. [Read more about this concrete pour milestone.](#)



Melrose Drive



Ocean Drive



Constitution Street



Leith Walk

- In October SFN exceeded this with a concrete pour totalling 170m, this is the longest track pour the project undertook and meant that there was track installed from Picardy Place to Newhaven.

Constitution place to Baltic Street

- For Robert Burns day in January, Leith’s iconic Burns statue was returned to its home on Bernard Street. [Read more about the unveiling of the restored Robert Burns statue.](#)
- In February the Leith Dock pillars were reinstated

Leith Walk

- In July two way running traffic introduced between London Road and Pilrig Street. [Read more about the reopening of this key section of the route.](#)
- The new substation at the bottom of Leith Walk was energised.

London Road to Picardy

- In February the decommissioning and removal of the temporary tram stop at York Place began. This enabled the track to be extended along to Picardy Place where the new tram stop has been constructed.
- The historic London Road clock returned home after 15 years in storage following its full restoration. [Read more about the reinstatement of the London Road clock.](#)

The Trams to Newhaven project remains on schedule to be operational by Spring 2023.



Trams to Newhaven by Numbers
December 2021 - December 2022

1 year construction progress



Tram track laid
2,841m to 4,631m
+1790m



Main construction on
tram stops completed
0 to 7
+7



OLE poles installed
0 to 215
+215



OLE wire strung installed
0m to 2,723m
+2,723m



Power ducting installed
3,447m to 4,579 m
+1,132m



Communication ducting
3,571m to 4,579 m
+1,008m



Drainage ducting installed
2,855m to 4,369m
+1,514m



Christmas Shutdown Plan

The project will shut down from 5pm on 23 December 2022 and return on Monday 9 January 2023 to review all safety measures ahead of recommencing main construction activities on Wednesday 11 January 2022. However system infrastructure works will commence from Wednesday 4 January 2022.

All main works will finish on the evening of the Wednesday 21 December 2022 to allow two full days on Thursday 22 and Friday 23 December 2022 for general housekeeping and security. However, there will be out of hours works on Wednesday 21 December 2022 from 7pm to 7am from Constitution Place to Rennie's Isle and on Thursday 22 December 2022 from 7pm to 7am at the following locations:

- Jane Street to Casino Roundabout
- Rennie's Isle to Ocean Terminal
- Ocean Terminal (red car park) to Newhaven

Traffic management maintenance crews will be operational 24/7 over the Christmas period.

Over the festive period our contact centre hours will be as follows:

- Email and Twitter will not be monitored from Saturday 24 December 2022 to Sunday 8 January 2023. All queries will be responded to from Monday 9 January 2022. If you have an emergency during this period, please contact us on 0131 322 1122.

- Calls will be monitored 24/7 throughout the Christmas shutdown period.

The operating times for the logistics hubs at Montgomery Street and Foot of the Walks hubs are:

- Friday 23 December – Open
- Saturday 24 December – Limited opening am
- Sunday 25 to Tuesday 27 December – Closed
- Wednesday 28 to Friday 30 December – Open
- Saturday 31 December – Limited opening am
- Sunday 1 January to Friday 6 January - Closed

Temporary loading / unloading provision is located on the central reservation on the east side of Leith Walk for businesses between Balfour Street and Pilrig Street.

Community Benefits Christmas Campaign

The Spirit of Christmas

This Christmas, and throughout the winter months, the Trams to Newhaven project has been working on a number of initiatives to support those in need. Examples include:

1. Our team recently took part in Edinburgh's Business Fives Football Tournament, where we were delighted to have collected £2,050.00 for charity [Dad's Rock](#) who are supporting dads/families to improve outcomes for children across Edinburgh and Scotland.

Lisa Morrison, Fundraising Manager, Dads Rock said:

"We've been absolutely blown away by the generosity of the team and all of your supporters, so a massive thank you from everyone at Dads Rock."

2. As part of Christmas Jumper Day 2022, our project team donned their festive knitwear in aid of [Save the Children UK](#). We were delighted to raise an amazing £400.00 for this great cause.

Constitution Place to Baltic Street

Attenuation pipe works at Tower Street are complete. Reinstatement of cobblestones is due to start w/c 5 December 2022.

3. Homelessness is one of the most common social problems in the UK and [Steps to Hope](#) is a local charity that is dedicated to fighting this through charity, support groups and awareness problems. We supported this local charity by providing essential items of food and toiletries.

4. Our contractors SFN, their subcontractors and supply chain have been collecting food and toy donations for local charities. The total contribution from our contractors was £1,600.00 and will aid local organisations to support some of the most vulnerable in the community of Leith. Final collections will be distributed to the following organisations in the coming week: - [Edinburgh North East Foodbank](#) and [Mission Christmas](#). Surfacing work between the casino building and the entrance to Tower Street Industrial Estate are scheduled to start w/c 5 December 2022.

Laura Sutherland, SFN Community Benefits Lead for the project said:

“The Trams to Newhaven Project is committed to maximising the social, economic and environmental benefits through the delivery of the project. As part of our works, we have an opportunity to enrich and enhance local community provision in the area that we work. Supporting those who are most vulnerable during the ongoing economic crisis has remained a key focus during our engagements.

I would like to thank our subcontractors and supply chain for their continued efforts in supporting all things community engagement on the Tram to Newhaven project.”

School Engagements

In the lead-up to Christmas Jumper Day 2022, we challenged local school children to get creative and design some winter jumpers by creating a Christmas jumper poster with a construction or Health & Safety theme. We had a fantastic response with over 200 children taking part from Victoria Primary School, St Mary’s RC, and Pilrig Park School. We have loved all the amazing entries by the wonderful children, they have certainly raised our Christmas spirit on the project this past week.

As a thank you to the children and teachers for taking part we will be visiting the schools with some Christmas surprises.

You can visit the amazing children’s work on project boards at our main project offices based at 165 Leith Walk to see some of the amazing entries.

Project Updates

Current cold weather

The current snap of extremely cold weather has had an impact on construction across the route. It has led to an interruption in the supply of concrete and our ability to carry out surfacing and paving works.

Leith Walk

Two-way traffic will be reintroduced at the Foot of the Walk junction between Great Junction Street and Duke Street during w/c 19 December 2022.

The project had planned to reintroduce two-way traffic the length of Leith Walk at the same time. However, the cold weather has meant we have been unable to place concrete and lay road surfacing materials. Two-way traffic the length of Leith Walk is now planned for January 2023.

The project will be temporarily backfilling excavations around recently removed lampposts on the footways and cycleway ahead of the Christmas shut down. Permanent reinstatement which will involve laying slabs will take place early 2023. The newly constructed north and south bound cycle lane remains closed.

Heras fencing on the west side of Leith Walk between Jameson Place and Smith's Place has been removed ahead of the Christmas shutdown.

Traffic management arrangements at Brunswick Road changed on Friday 16 December 2022. Temporary lights have been removed from the junction and one way traffic is now travelling from Easter Road toward Leith Walk. Vehicles on Leith Walk wishing to head east can use Manderston Street, Dalmeny Street or go round Picardy Place and turning right onto London Road. Brunswick Street remains closed.

The project is aware of the issue of some drivers failing to observe the ban on the left hand turn from Leith Walk onto London Road. Further measures have been taken to highlight this and improve traffic movement in the area, [details of which can be found on the project website](#).

Christmas Message

The Trams to Newhaven project would like to wish everyone a Merry Christmas and a Happy New Year.

Our next newsletter will be issued on Friday 20 January 2022.